



Summary of Monthly Operations – September 2009

General

In September 2009 the 95 Express Lanes:

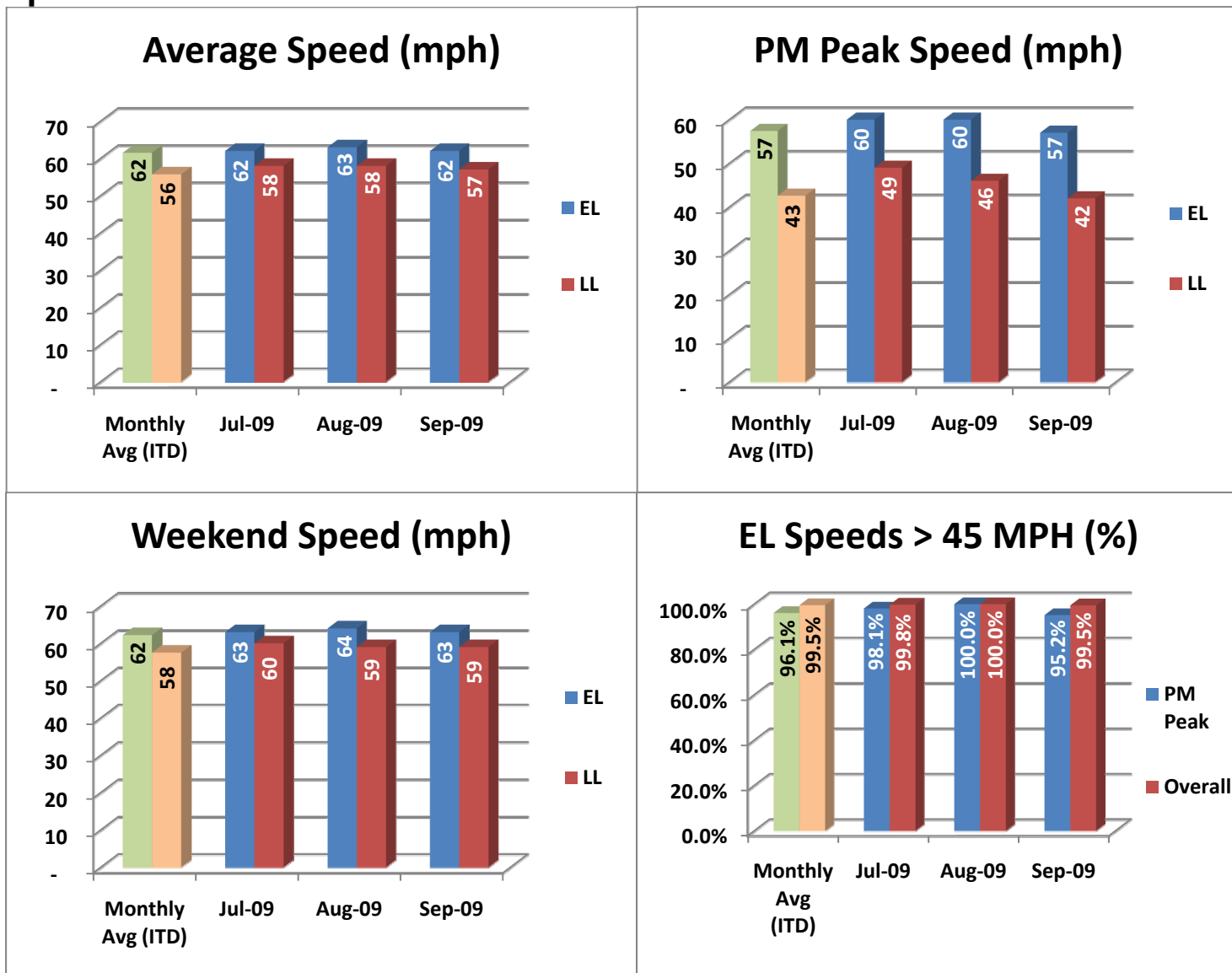
- ✓ Serviced 597,155 vehicle trips bringing the total since opening (December 5, 2008) to 6,005,676.
- ✓ Had estimated monthly toll revenue of \$396,468 bringing the total revenue to date to approximately \$3.94 million.
- ✓ Tolls ranged from \$0.25 to the highest toll for the month of \$5.00.
 - Average weekday toll - \$0.80
 - Average PM peak period (4pm to 7pm) toll - \$1.65
 - Average weekend toll - \$0.24
 - Average off-peak weekday toll - \$0.42
 - Approximately 85% of the customers were charged \$1.50 or less.
- ✓ Average weekday traffic volume was 22,839, a 0.6% decrease over August.
- ✓ Average PM Peak Period (4pm to 7pm) traffic volume was 7,062, a 1.2% decrease over August.
- ✓ Operated 15 mph above the local lanes (LL) during the PM peak period (4pm to 7pm) and 5 mph greater overall.
- ✓ Operated above 45 mph 99.5% of the time.
- ✓ Remained open to motorist 96.8% of the time, while closed 2.4% due to planned construction and 0.7% due to non-recurring events.
- ✓ Reached a total of 7,248 registered vehicles.

September 2009 Statistics	Speed (mph)			Volume (vpd)	
	EL	LL	Δ	EL	LL
Average Weekday	-	-	-	22,839	98,397
Average PM Peak Period	57	42	15	7,062	17,640
Average Weekend Day	63	59	4	11,837	87,544



Operations/Traffic Statistics

Speed Data

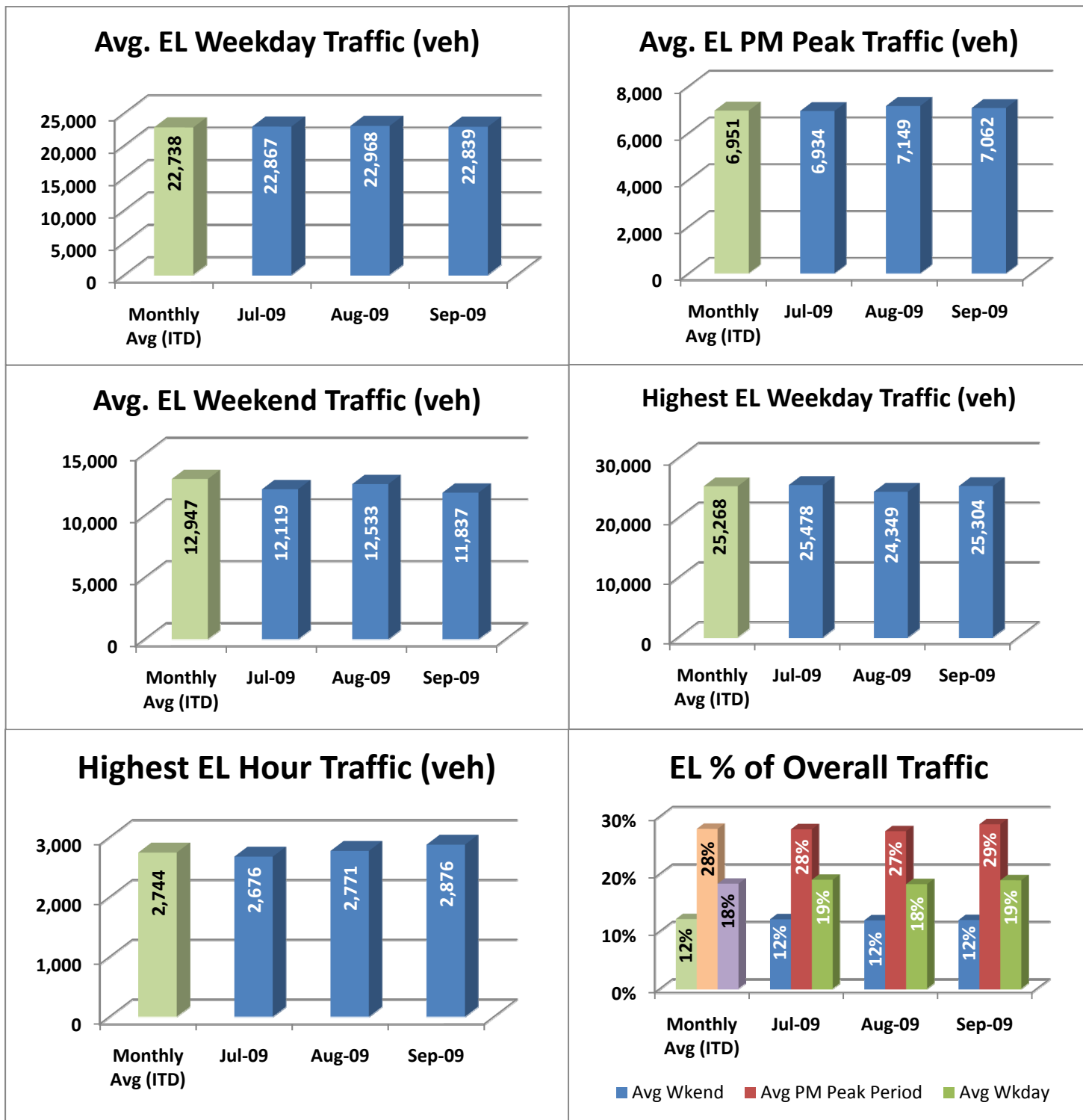


NOTE: ITD = Inception to Date



Operations/Traffic Statistics

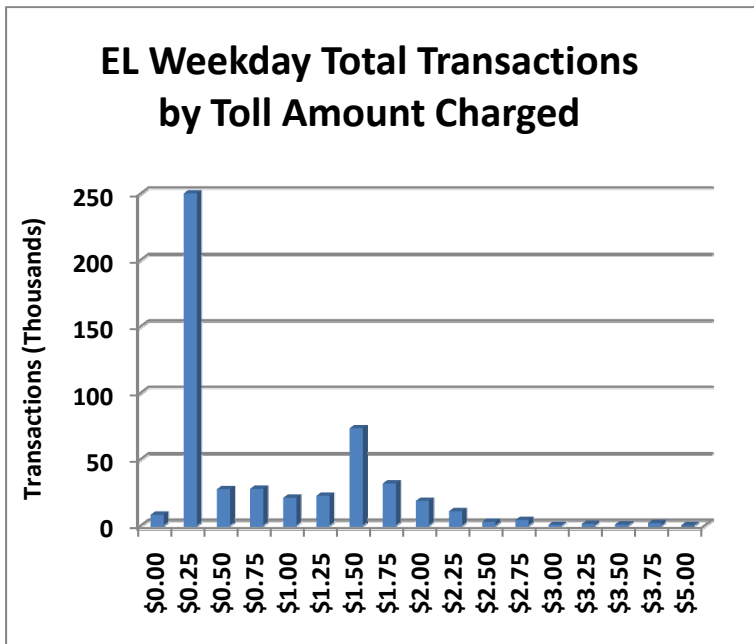
Volume Data



NOTE: ITD = Inception to Date



Revenue/Tolls Statistics



Toll ranges \$0.25 to \$5.00

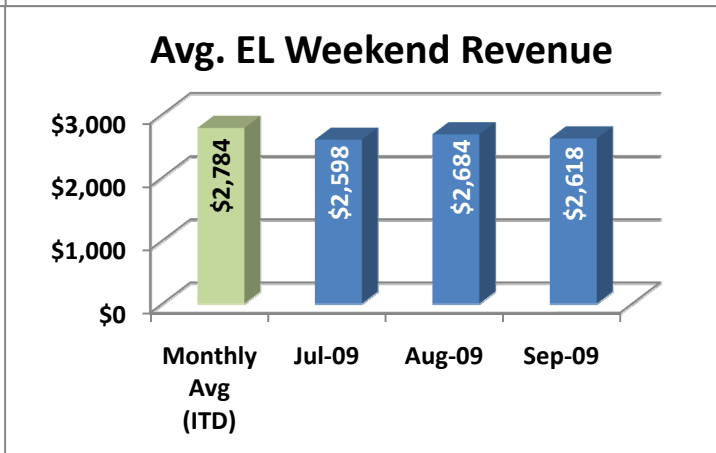
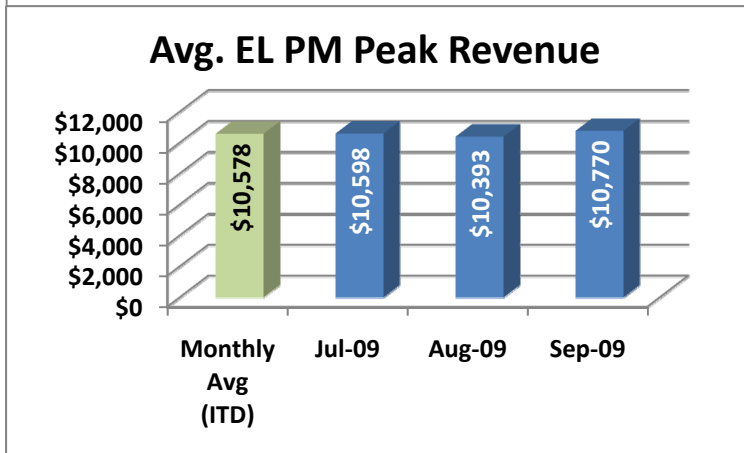
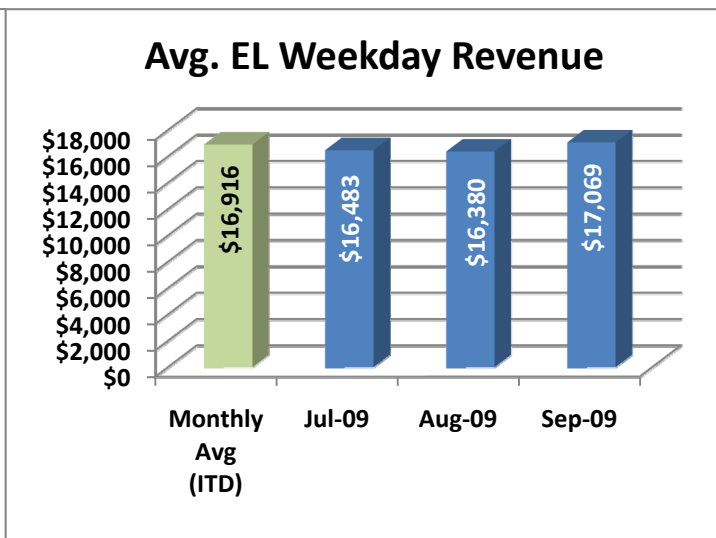
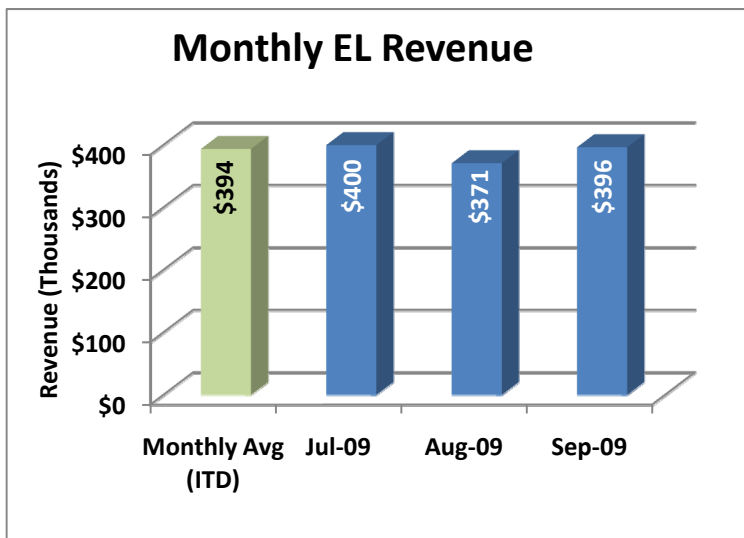
Average weekday toll charged was \$0.80

Average weekday PM peak period (4-7) toll charged was \$1.65

Average weekend toll charged was \$0.24

Average weekday off-peak hours (all hours except for 4-7) toll charged was \$0.42

Most frequently charged weekday PM peak period (4-7) toll rate was \$1.50

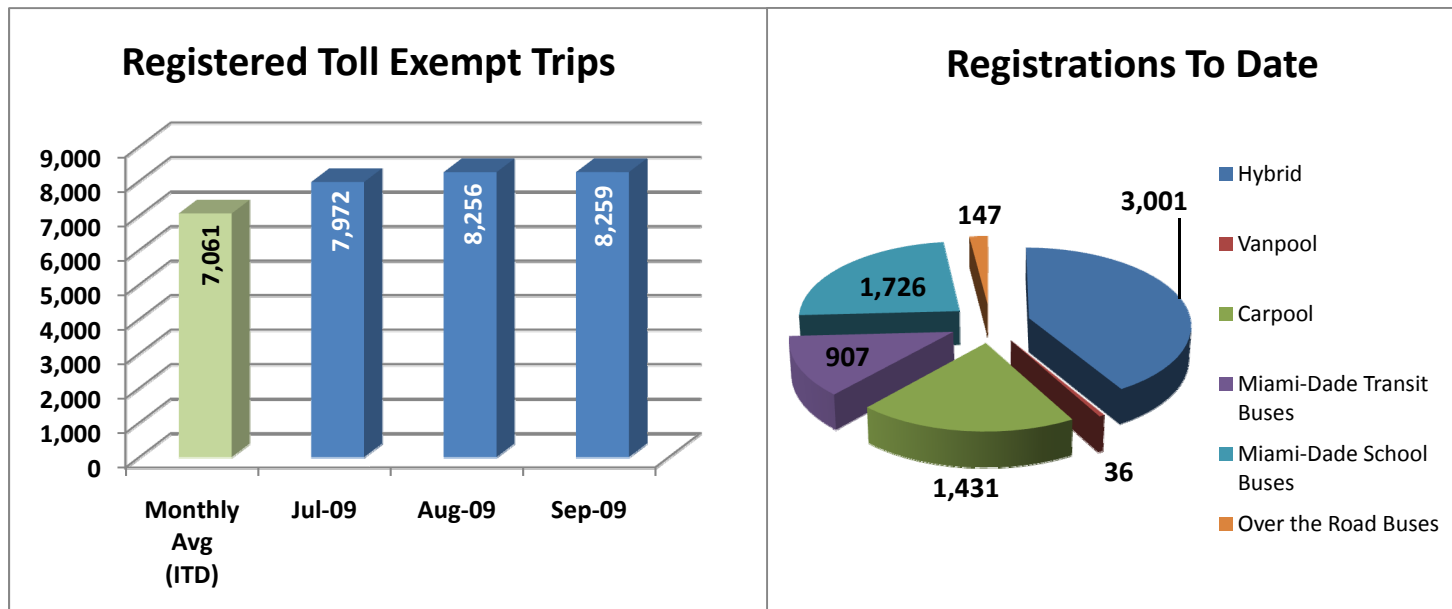


NOTE: ITD = Inception to Date



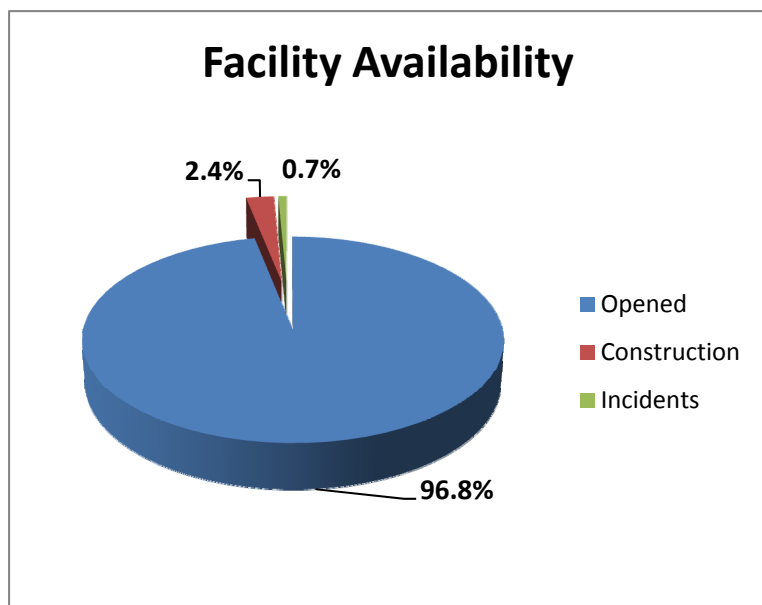
Registrations—Toll Exempt Trips

The total registrations through September 2009 was 7,248. There were 8,259 registered toll exempt vehicle trips for the month of September.



NOTE: ITD = Inception to Date

Facility Availability

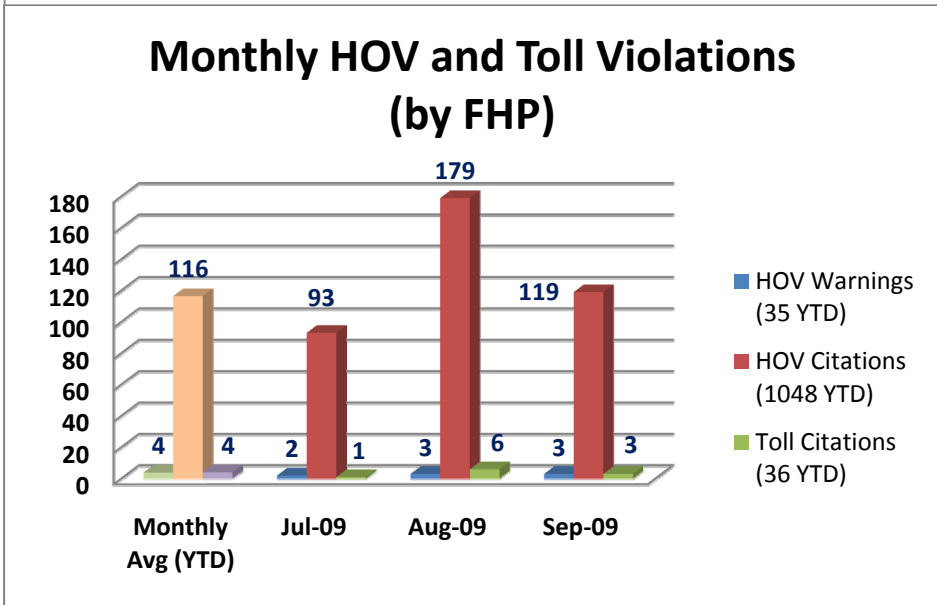
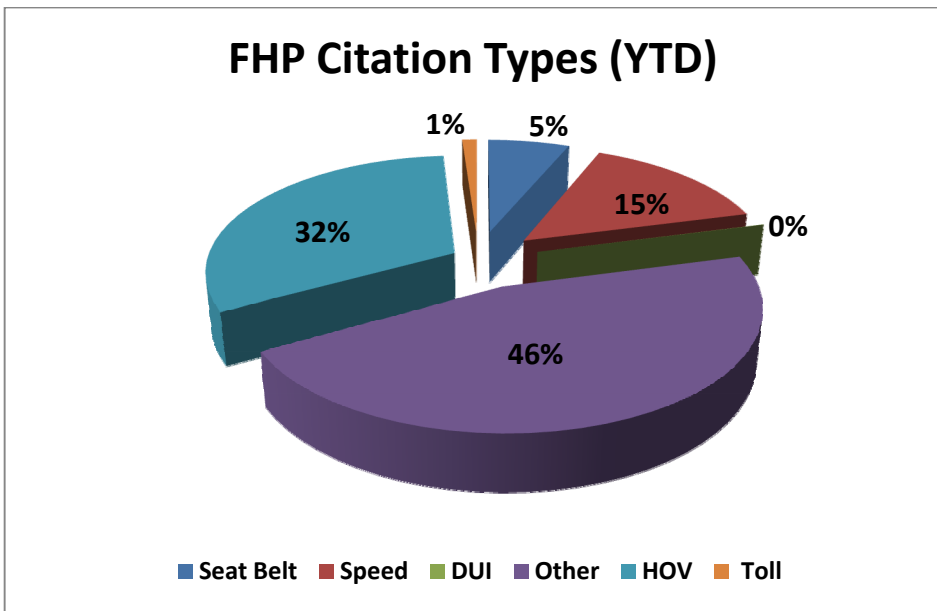


The 95 Express Lanes were open to motorist 96.8% of the time, while closed 2.4% due to planned construction and 0.7% due to non-recurring events.



Enforcement

The Florida Highway Patrol (FHP) conducts visual enforcement with the 95 Express Lanes. The first graph represents the total percentage breakdown of all citation categories for calendar year 2009. The second graph represents monthly High Occupancy Vehicle (HOV) and Toll violations.



NOTE: YTD = Year to Date