



Summary of Monthly Operations – October 2009

General

In October 2009 the 95 Express Lanes:

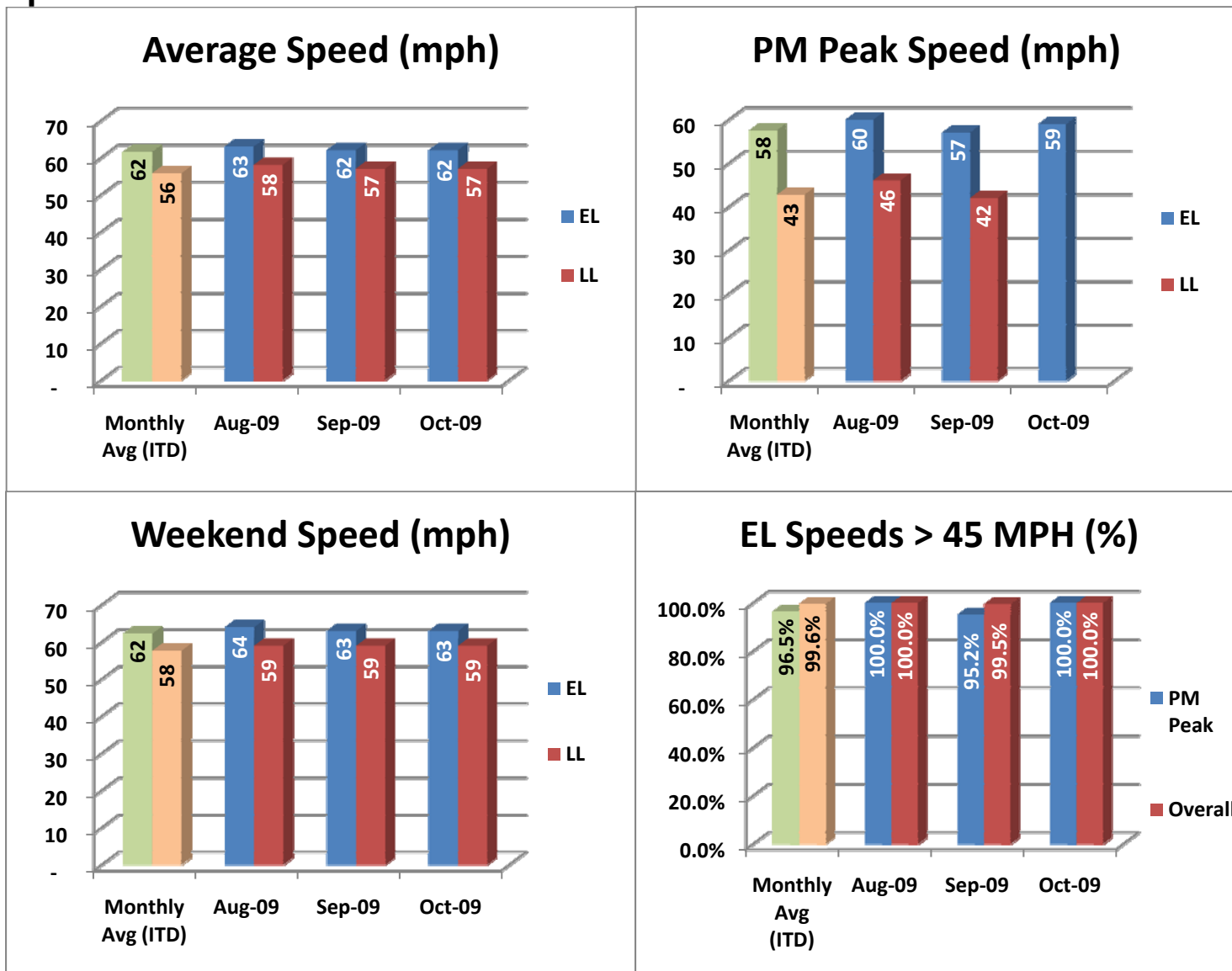
- ✓ Serviced 641,266 vehicle trips bringing the total since opening (December 5, 2008) to 6,646,942.
- ✓ Had estimated monthly toll revenue of \$420,210 bringing the total revenue to date to approximately \$4.36 million.
- ✓ Tolls ranged from \$0.25 to the highest toll for the month of \$2.50.
 - Average weekday toll - \$0.80
 - Average PM peak period (4pm to 7pm) toll - \$1.65
 - Average weekend toll - \$0.25
 - Average off-peak weekday toll - \$0.42
 - Approximately 85% of the customers were charged \$1.50 or less.
- ✓ Average weekday traffic volume was 23,736, a 3.9% increase over September.
- ✓ Average PM Peak Period (4pm to 7pm) traffic volume was 7,314, a 3.6% increase over September.
- ✓ Operated 15 mph above the local lanes (LL) during the PM peak period (4pm to 7pm) and 5 mph greater overall.
- ✓ Operated above 45 mph 100.0% of the time. (Rounded to the nearest 10th of a %)
- ✓ Remained open to motorist 95% of the time, while closed 4.1% due to planned construction and 1% due to non-recurring events.
- ✓ Reached a total of 7,431 registered vehicles.

October 2009 Statistics	Speed (mph)			Volume (vpd)	
	EL	LL	Δ	EL	LL
Average Weekday	-	-	-	23,736	99,508
Average PM Peak Period	59	44	15	7,314	18,028
Average Weekend Day	63	59	4	13,231	90,706



Operations/Traffic Statistics

Speed Data

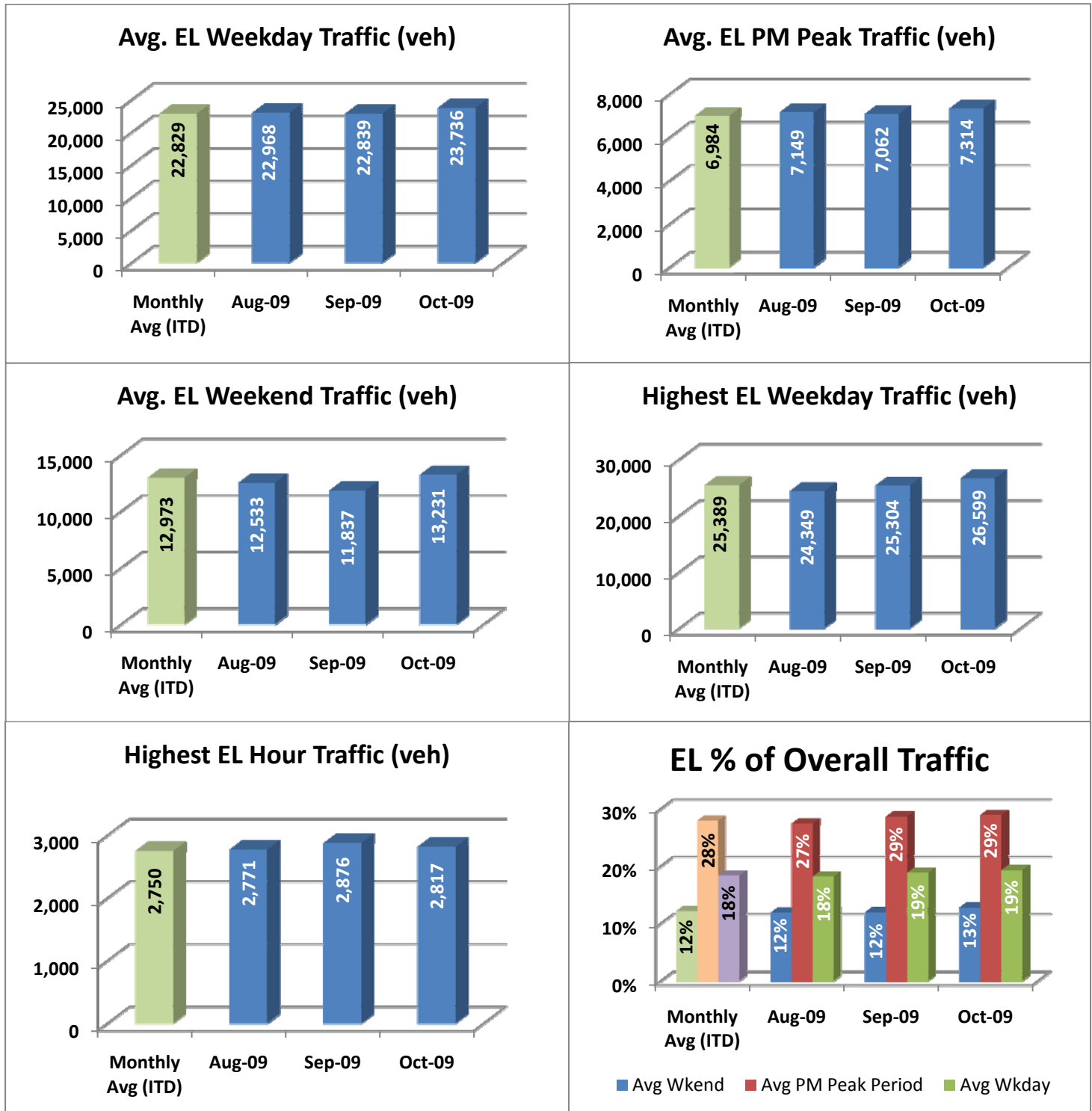


NOTE: ITD = Inception to Date



Operations/Traffic Statistics

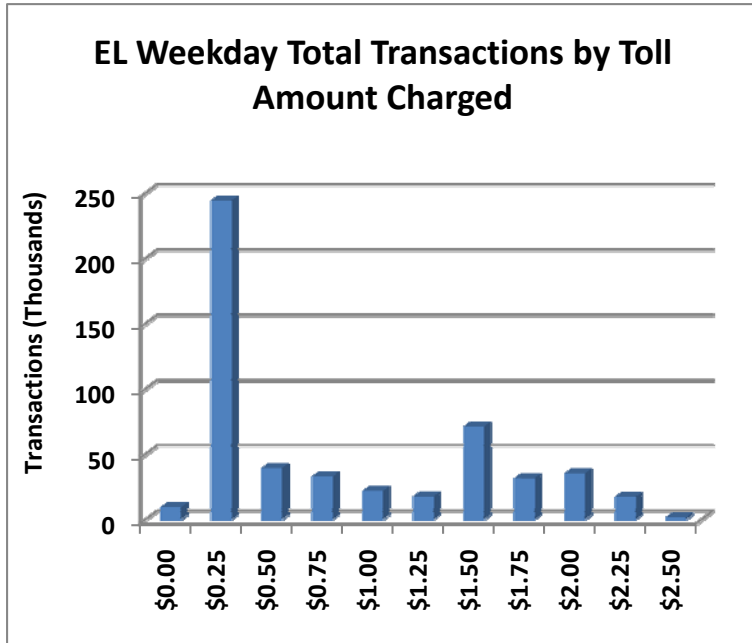
Volume Data



NOTE: ITD = Inception to Date



Revenue/Tolls Statistics



Toll ranges \$0.25 to \$2.50

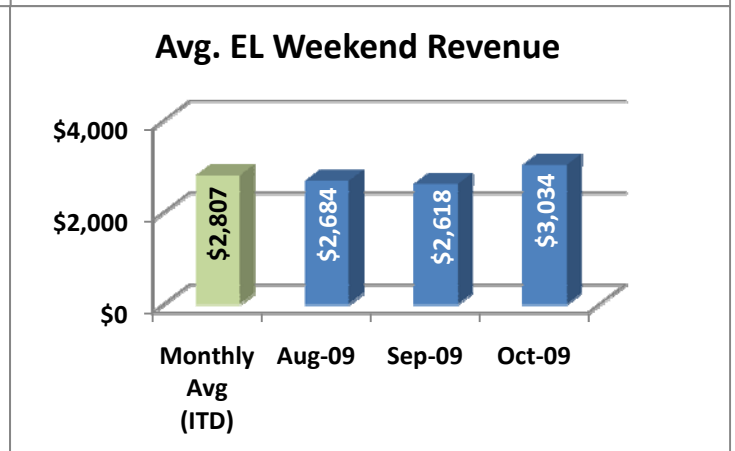
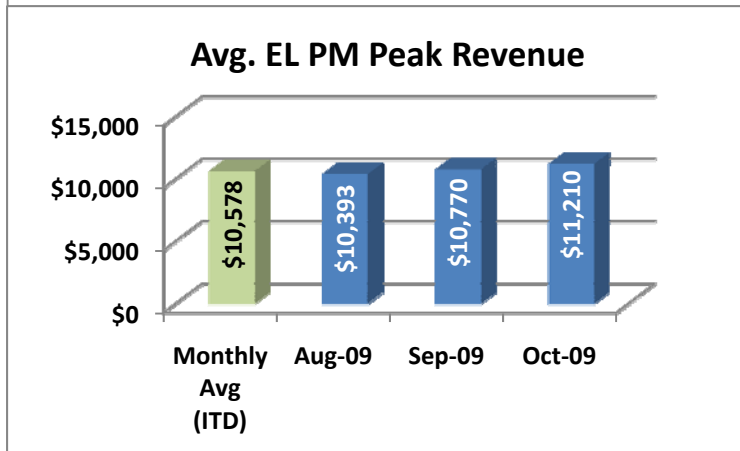
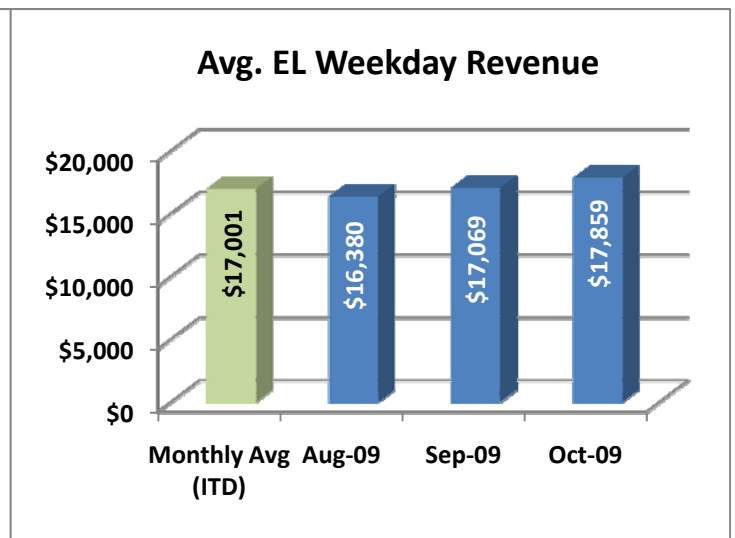
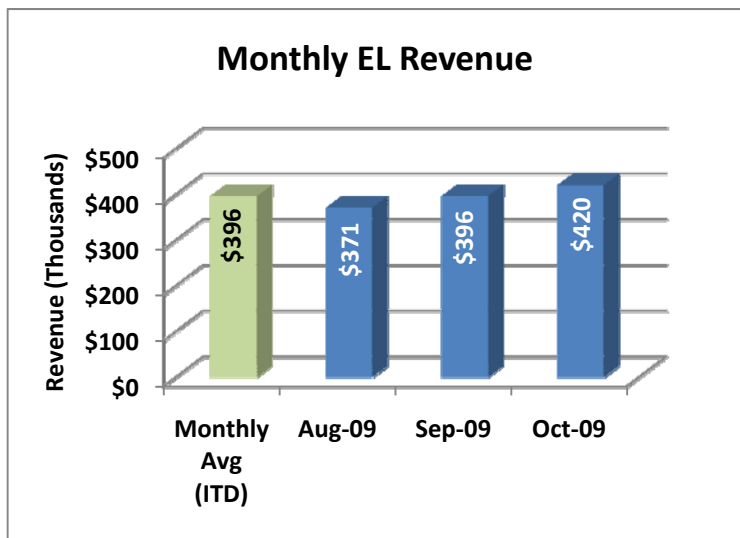
Average weekday toll charged was \$0.80

Average weekday PM peak period (4-7) toll charged was \$1.65

Average weekend toll charged was \$0.25

Average weekday off-peak hours (all hours except for 4-7) toll charged was \$0.42

Most frequently charged weekday PM peak period (4-7) toll rate was \$1.50

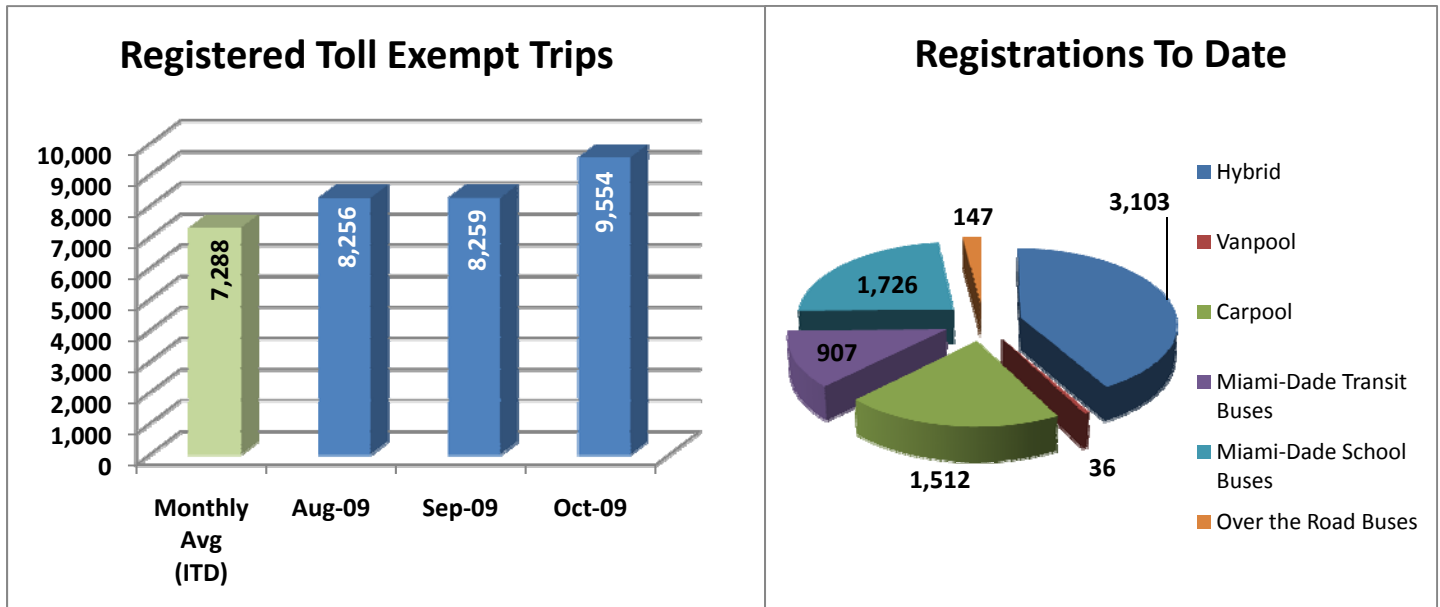


NOTE: ITD = Inception to Date



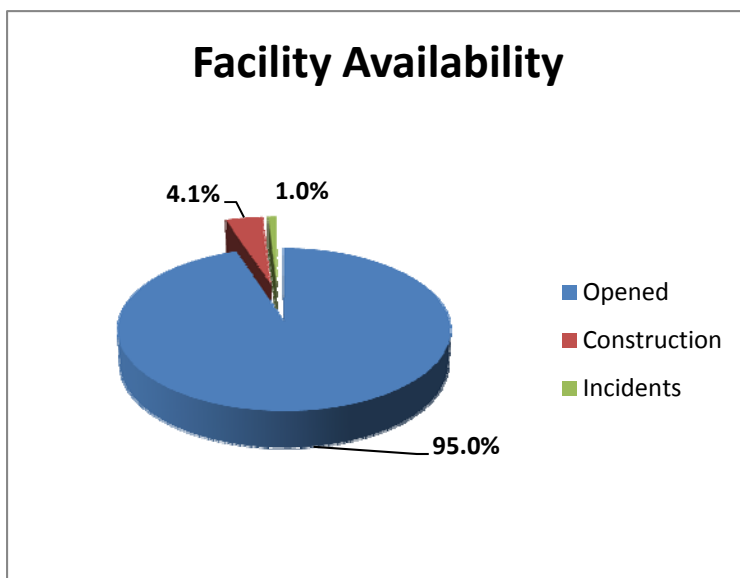
Registrations—Toll Exempt Trips

The total registrations through October 2009 was 7,431. There were 9,554 registered toll exempt vehicle trips for the month of October.



NOTE: ITD = Inception to Date

Facility Availability

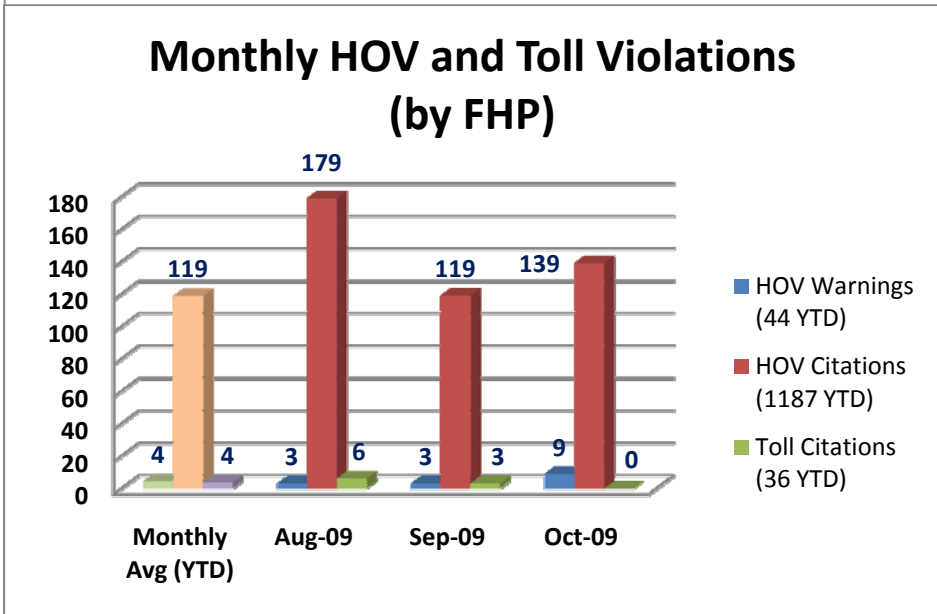
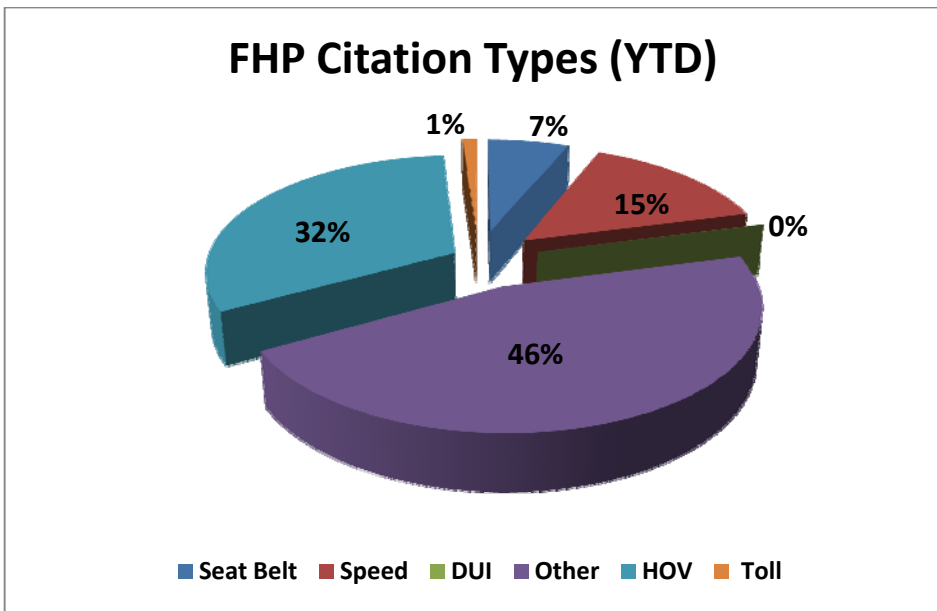


The 95 Express Lanes were open to motorists 95% of the time, while closed 4.1% due to planned construction and 1% due to non-recurring events.



Enforcement

The Florida Highway Patrol (FHP) conducts visual enforcement with the 95 Express Lanes. The first graph represents the total percentage breakdown of all citation categories for calendar year 2009. The second graph represents monthly High Occupancy Vehicle (HOV) and Toll violations.



NOTE: YTD = Year to Date