



Summary of Monthly Operations – February 2010

General

On January 15, 2010 the 95 Express Lanes began its southbound operations. This monthly report has been modified to reflect both directions of traffic with all corresponding performance measures. In total, the 95 Express Lanes:

- ✓ Serviced 1,365,166 vehicle trips in February (2.38 million in 2010 to date), bringing the total since opening (December 5, 2008) to approximately 10.3 million trips.
- ✓ Had estimated monthly toll revenue of \$1,109,150 in February (\$1.85 million in 2010 to date) bringing the total revenue to date to approximately \$7.10 million.
- ✓ Reduced to a total of 7,946 registered vehicles.

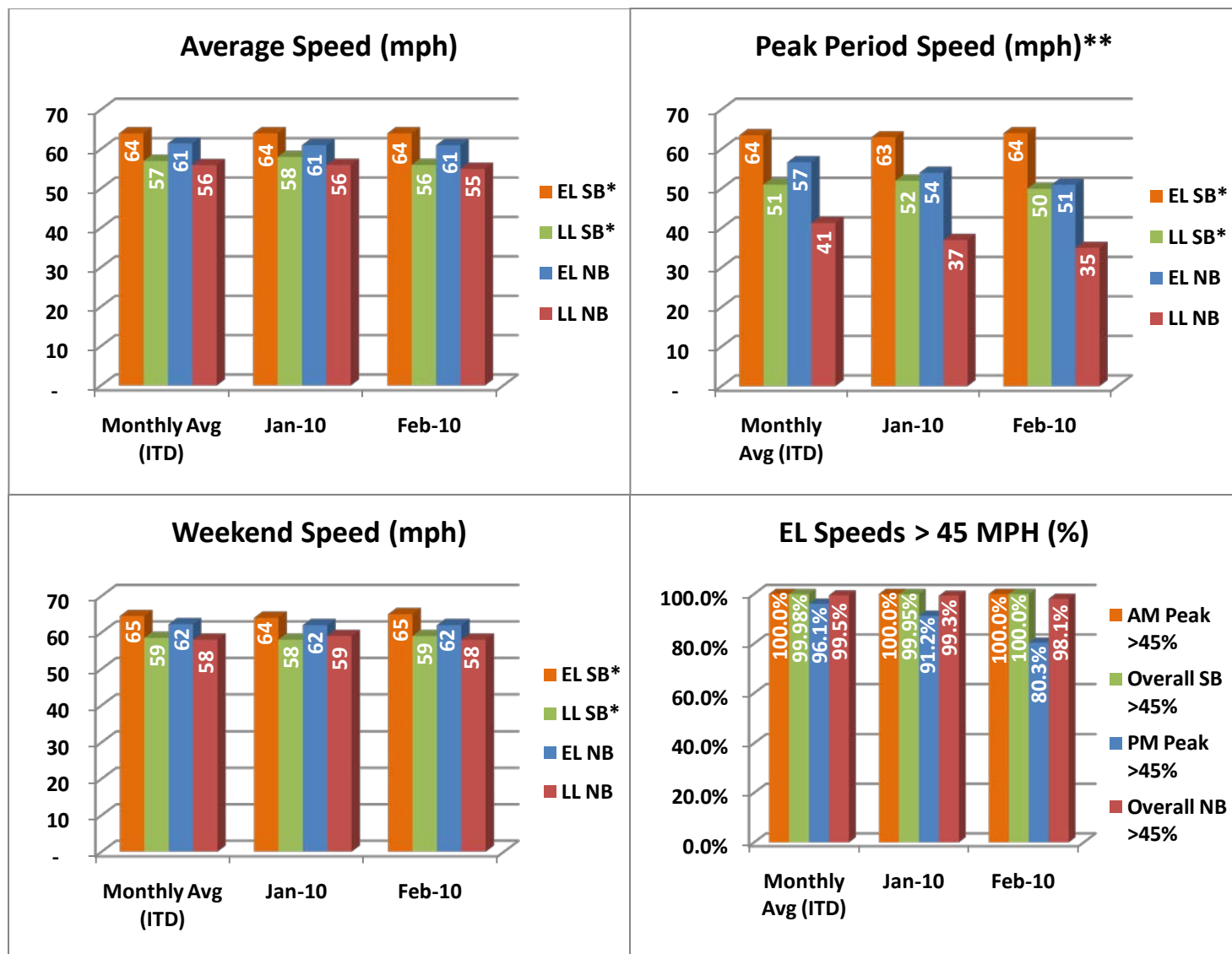
<u>February 2010 Statistics</u>	<u>Southbound</u>		<u>Northbound</u>			
Trips	666,254		698,912			
Revenue	\$489,933		\$619,217			
Tolls	\$0.00 - \$3.75		\$0.00 - \$5.00			
- Range	\$0.93		\$1.12			
- Avg. Weekday	\$1.54		\$2.41			
- Avg. Peak Period**	\$0.28		\$0.29			
- Avg. Weekend	\$0.51		\$1.08			
- Avg. Off Peak	\$1.75		\$2.25			
- 85 th Percentile (or less)						
Volume	EL	LL	EL	LL		
- Avg. Weekday	26,300	114,747	27,648	101,418		
- Avg. Peak Period**	7,510	20,182	8,075	17,301		
Speed (MPH)	EL	LL	Δ	EL	LL	Δ
- Avg. Overall	64	56	8	61	55	6
- Avg. Peak Period**	64	50	14	51	35	16
Operated Above 45 MPH	100.0%		98.1%			
Remained Open to Motorists	84.4%		92.7%			
Closed due to Planned Construction	15.5%		6.6%			
Closed due to Non-recurring Events	0.1%		0.7%			
<i>EL (Express Lanes); LL (Local Lanes)</i>						
<i>**Peak Period is defined as 6-9 AM (southbound) and 4-7 PM (northbound).</i>						



Operations/Traffic Statistics - Speed Data

*All southbound data reflects activity beginning January 15, 2010.

** Peak Period is defined as 6-9 AM (southbound) and 4-7 PM (northbound).



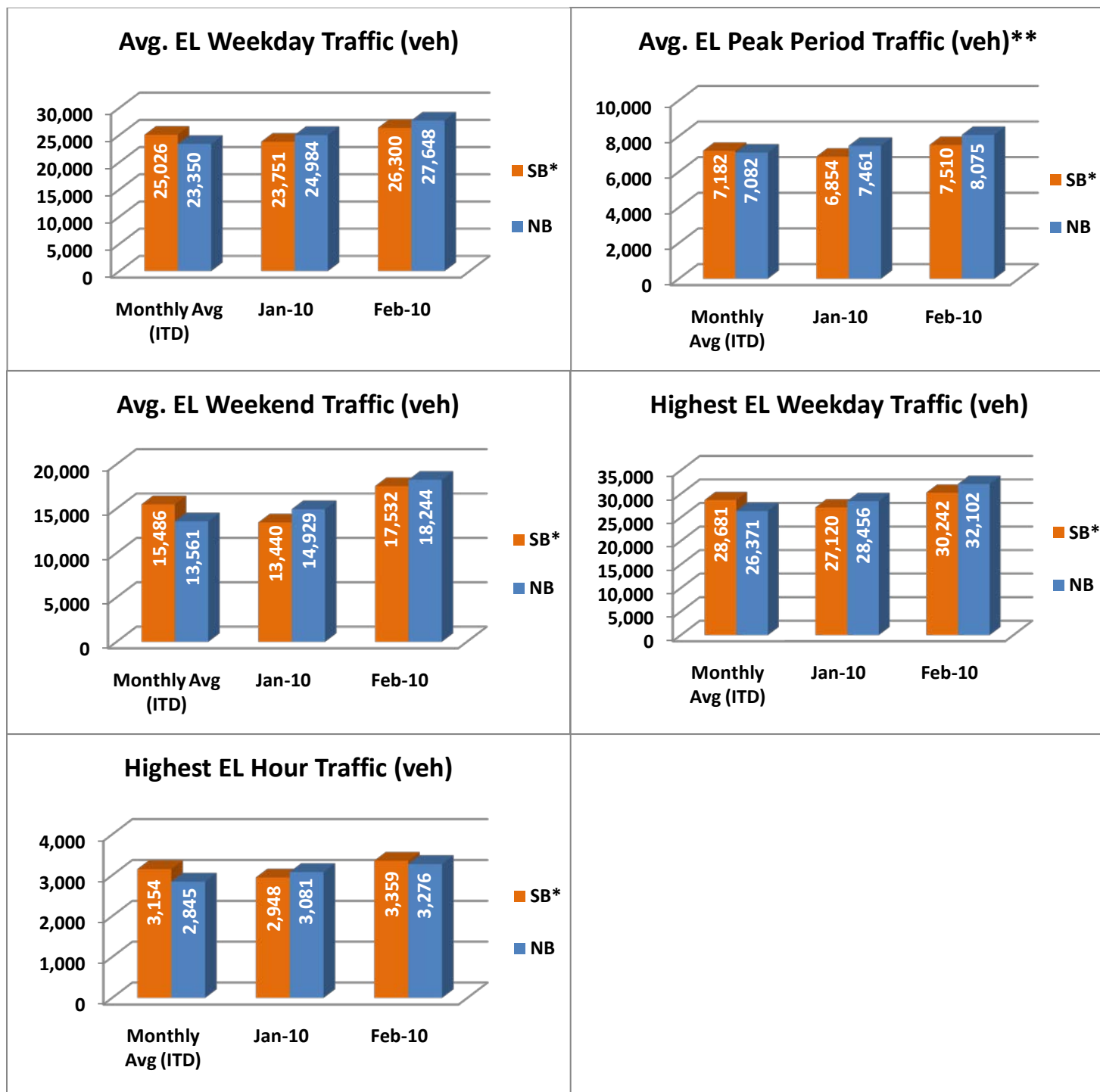
NOTE: ITD = Inception to Date



Operations/Traffic Statistics - Volume Data

*All southbound data reflects activity beginning January 15, 2010.

** Peak Period is defined as 6-9 AM (southbound) and 4-7 PM (northbound).



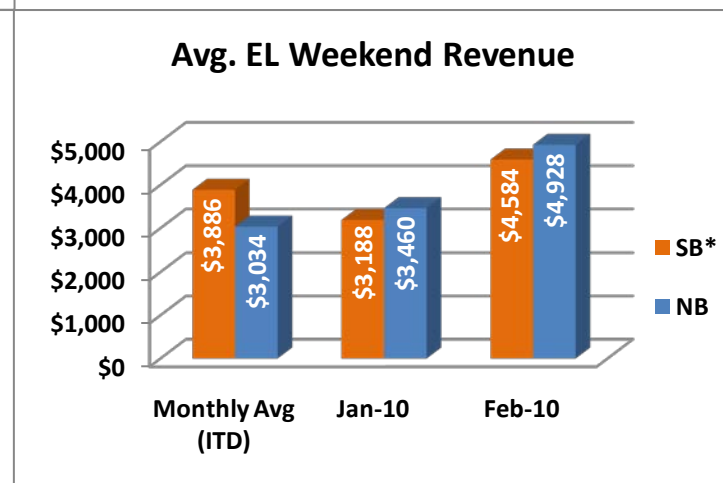
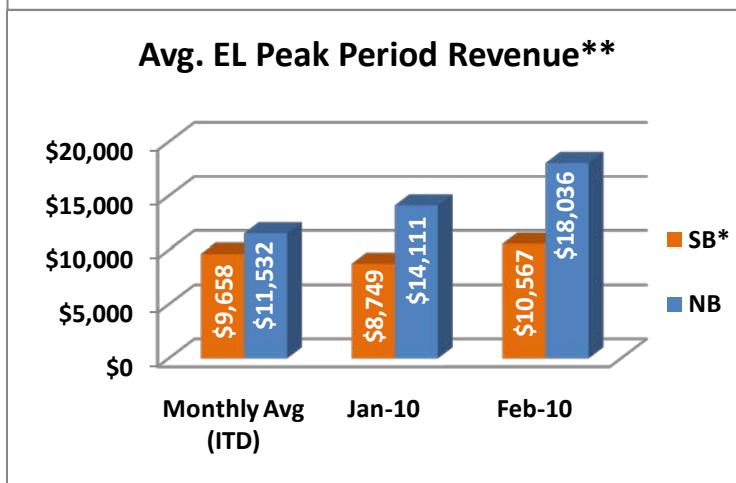
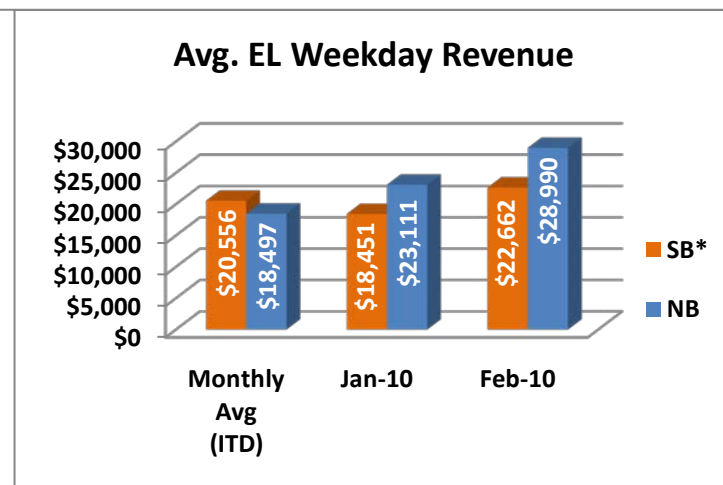
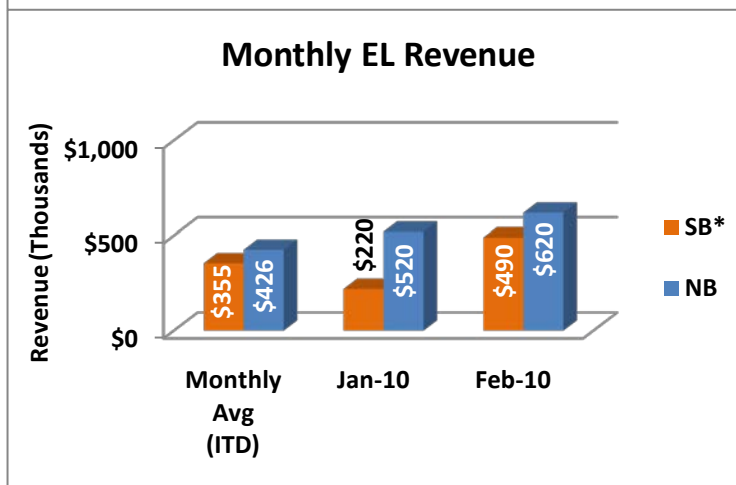
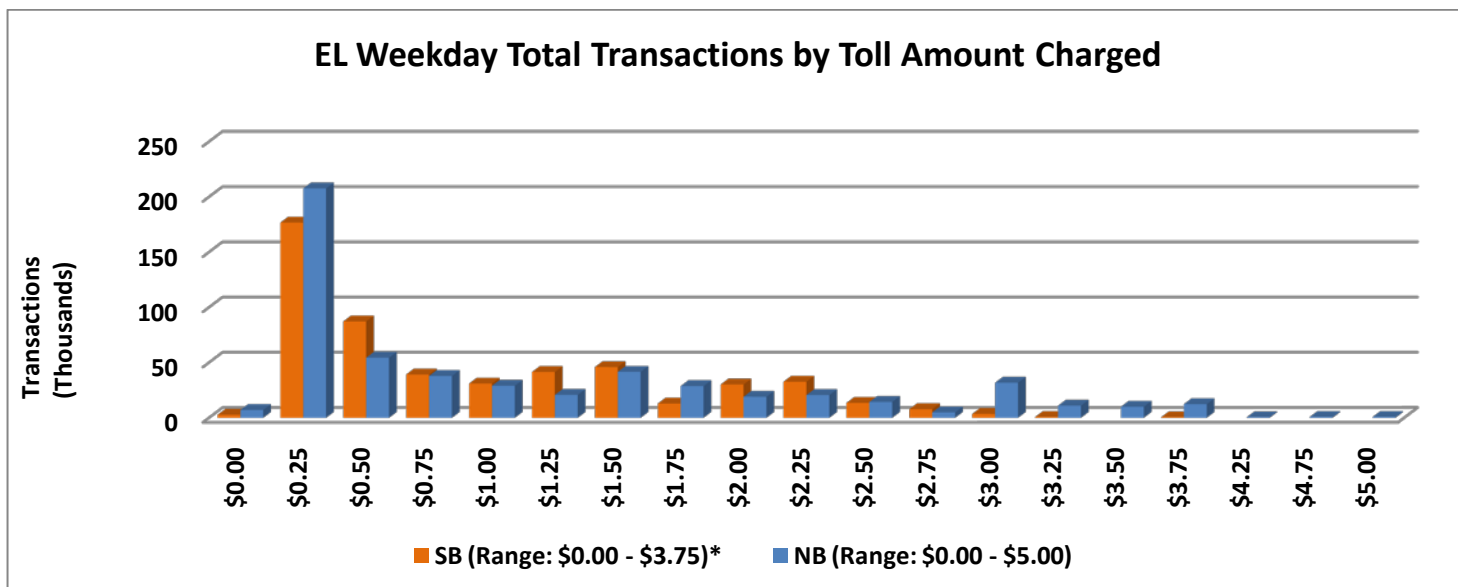
NOTE: ITD = Inception to Date



Revenue/Tolls Statistics

*All southbound data reflects activity beginning January 15, 2010.

** Peak Period is defined as 6-9 AM (southbound) and 4-7 PM (northbound).



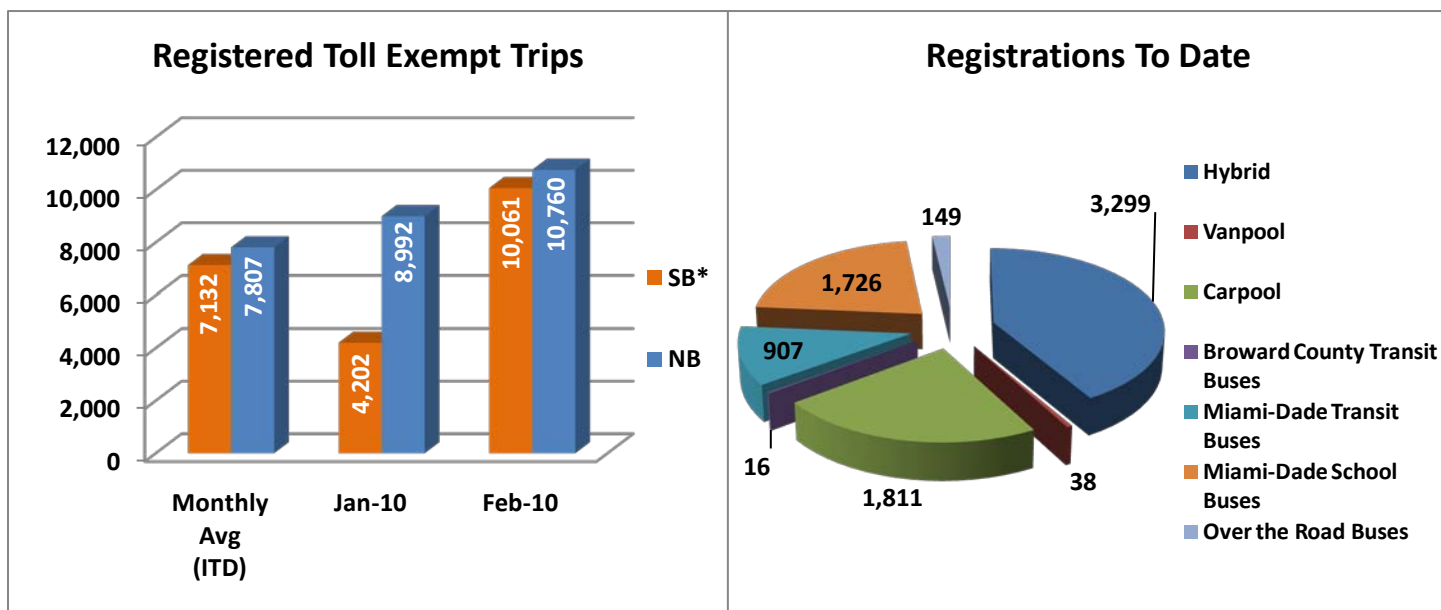
NOTE: ITD = Inception to Date



Registrations—Toll Exempt Trips

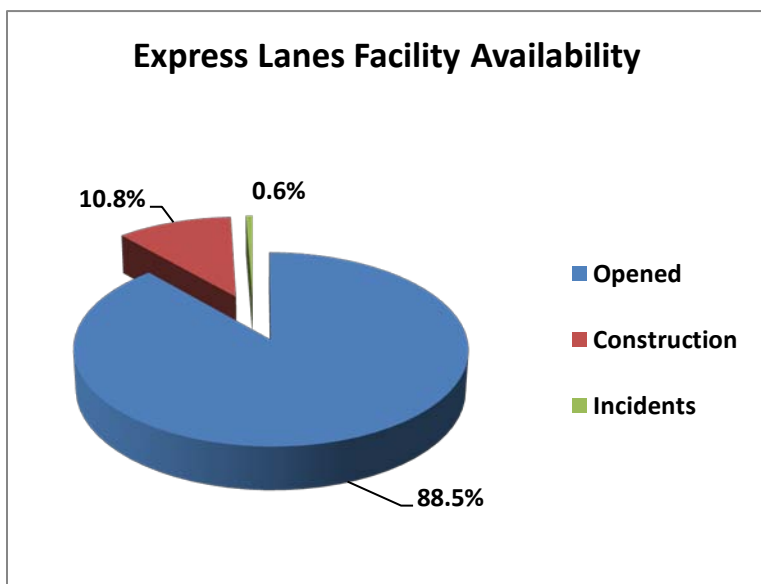
The total registrations through February 2010 was 7,946. There were 20,821 total registered toll exempt vehicle trips for the month of February.

*All southbound data reflects activity beginning January 15, 2010.



NOTE: ITD = Inception to Date

Facility Availability



The entire 95 Express Lanes (both directions) were open to motorists 88.5%* of the time, while closed 10.8%* due to planned construction and 0.6%* due to non-recurring events.

*Please note that this includes southbound data, which reflects activity beginning January 15, 2010.



Enforcement

This section is being revised. An updated report will be posted at such time that this section is complete.