



Summary of Monthly Operations – March 2011

General

In total, the 95 Express Lanes:

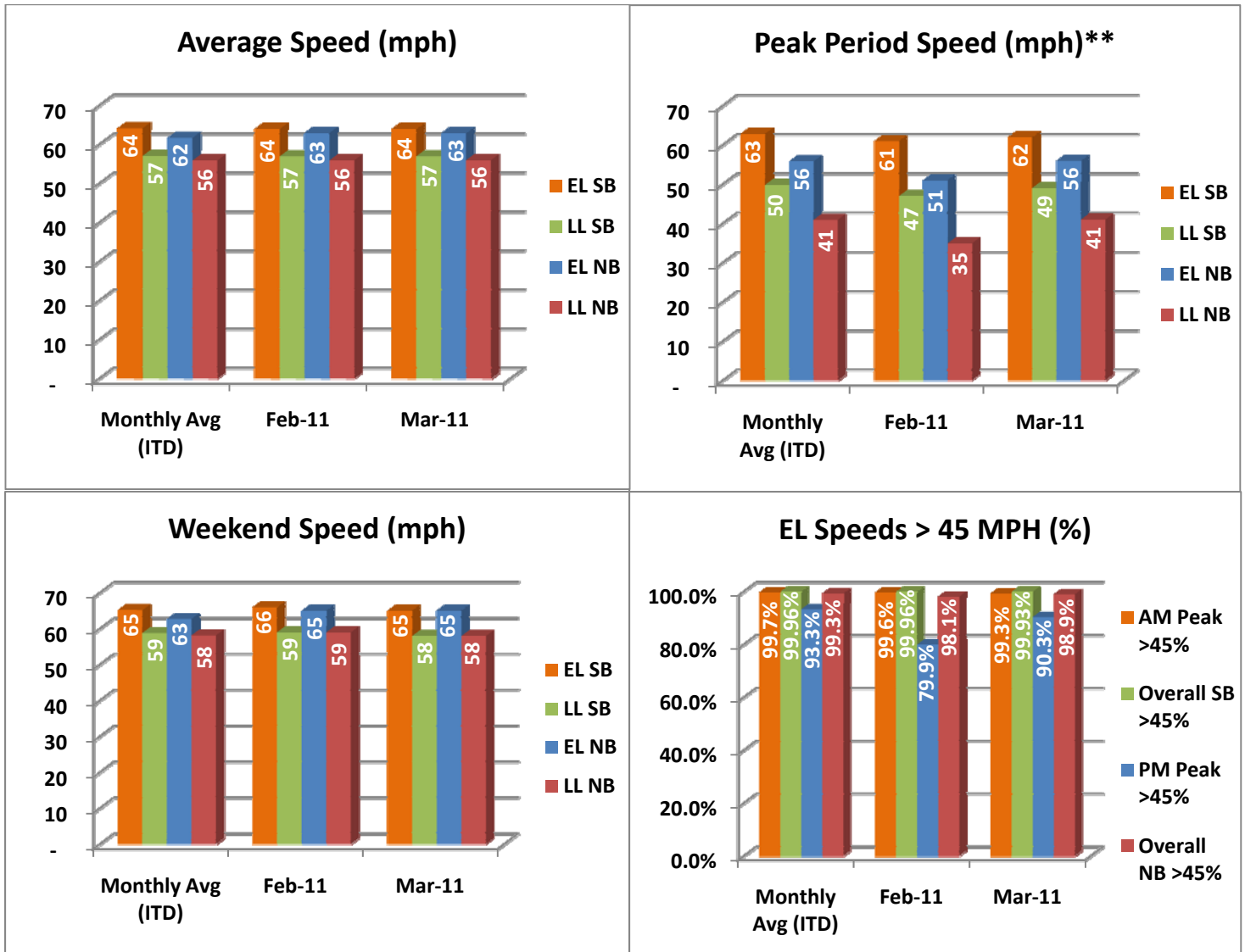
- ✓ Serviced 1,857,797 vehicle trips in March 2011 (5.10 million trips in 2011 to date), bringing the total since opening (December 5, 2008) to approximately 30.2 million trips.
- ✓ Had estimated monthly toll revenue of \$1.61 million in March 2011 (\$4.24 million in revenue in 2011 to date), bringing the total revenue to date to approximately \$23.0 million.
- ✓ Increased to a total of 8,549 registered vehicles.

<u>March 2011 Statistics</u>	<u>Southbound</u>			<u>Northbound</u>		
Trips	938,094			919,703		
Revenue	\$790,910			\$815,891		
Tolls						
- Range	\$0.00 - \$5.00			\$0.00 - \$7.00		
- Avg. Weekday	\$1.07			\$1.16		
- Avg. Peak Period**	\$1.87			\$2.49		
- Avg. Weekend	\$0.40			\$0.30		
- Avg. Off Peak	\$0.70			\$0.64		
- 85 th Percentile Weekday	\$2.00			\$2.25		
Volume (veh)	EL	LL		EL	LL	
- Avg. Weekday	33,382	110,019		32,667	103,777	
- Avg. Peak Period**	9,107	19,050		8,843	18,070	
Speed (mph)	EL	LL	Δ	EL	LL	Δ
- Avg. Overall	64	57	7	63	56	7
- Avg. Peak Period**	62	49	13	56	41	15
Operated Above 45 MPH	99.9%			98.9%		
Remained Open to Motorists	92.1%			93.9%		
Closed due to Planned Construction	4.8%			3.3%		
Closed due to Non-recurring Events	3.1%			2.8%		
<i>EL (Express Lanes); LL (Local Lanes)</i>						
<i>**Peak Period is defined as 6-9 AM (southbound) and 4-7 PM (northbound).</i>						



Operations/Traffic Statistics - Speed Data

** Peak Period is defined as 6-9 AM (southbound) and 4-7 PM (northbound).

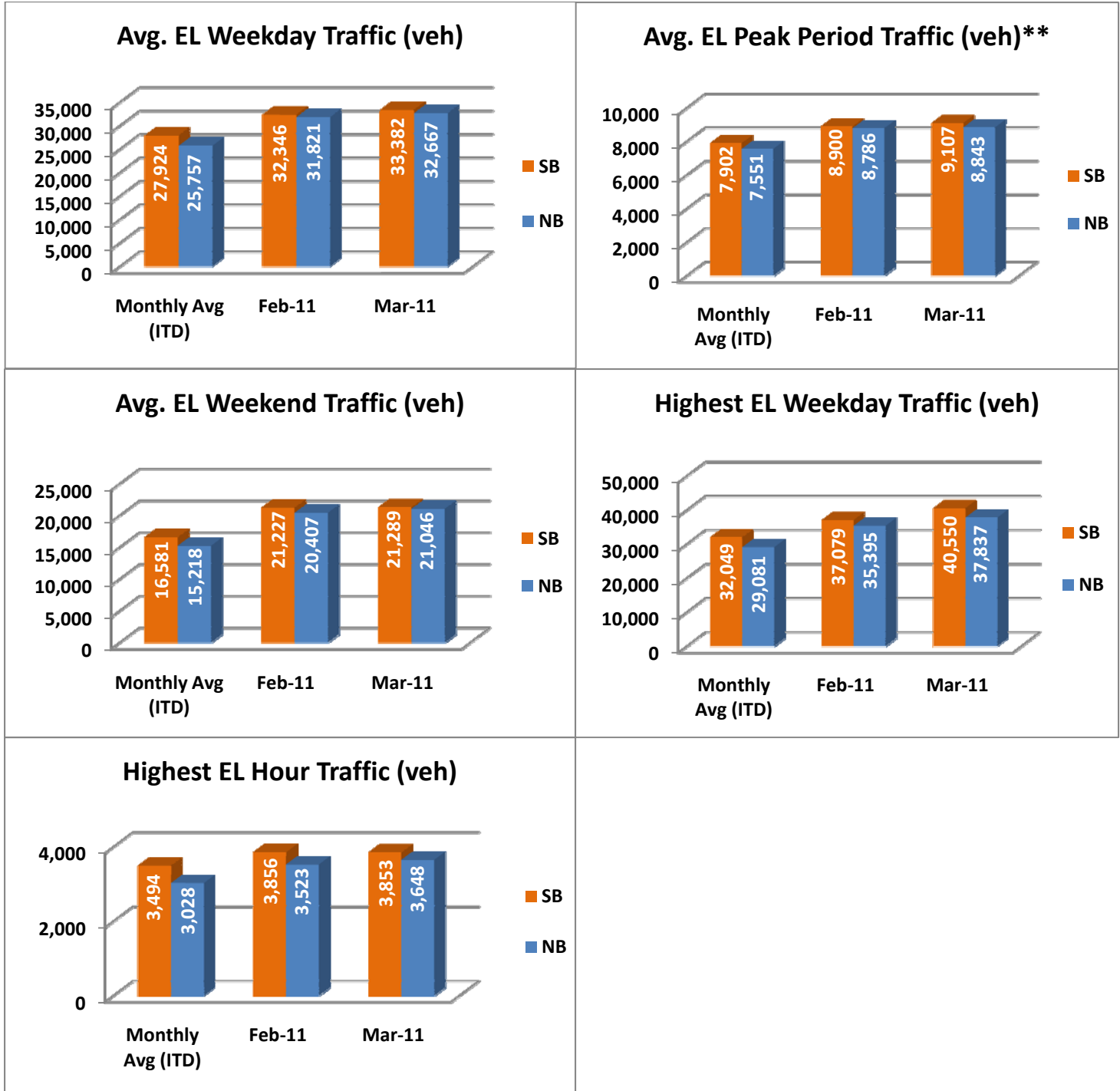


NOTE: ITD = Inception to Date



Operations/Traffic Statistics - Volume Data

** Peak Period is defined as 6-9 AM (southbound) and 4-7 PM (northbound).

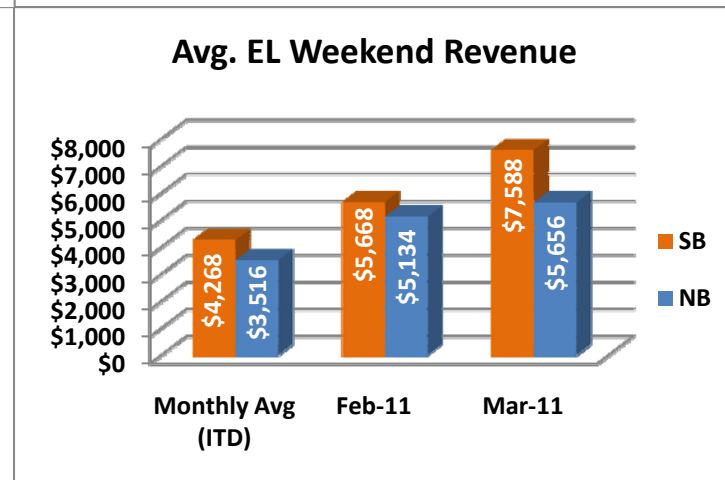
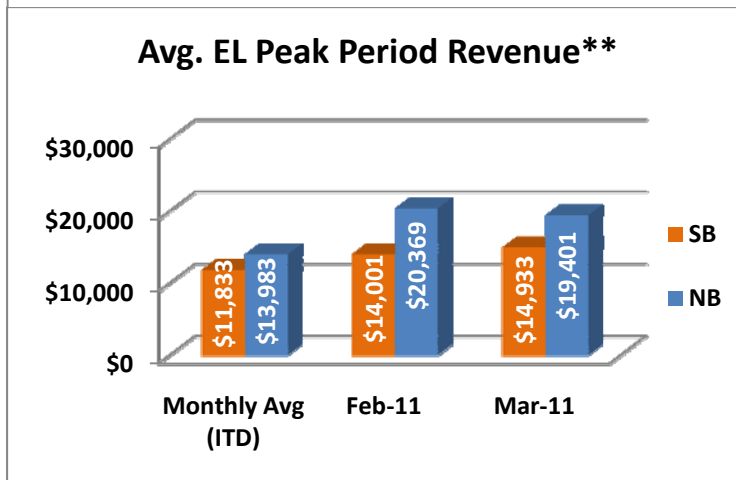
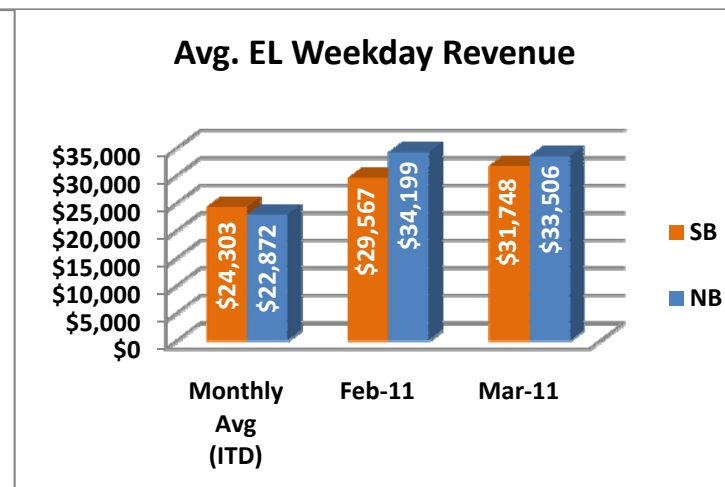
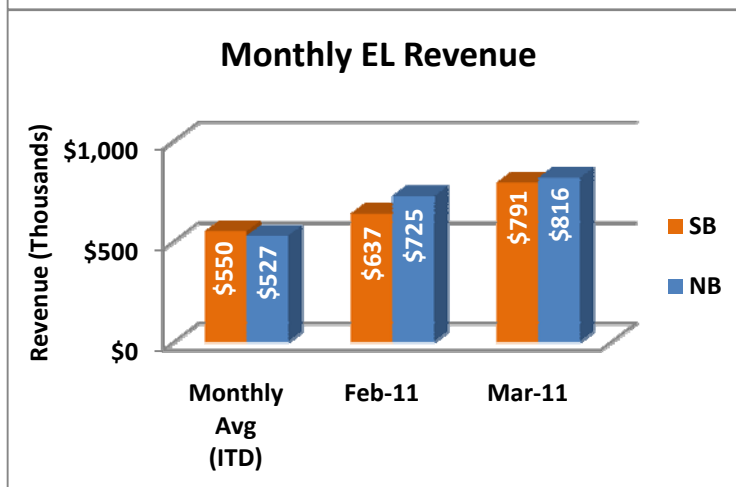
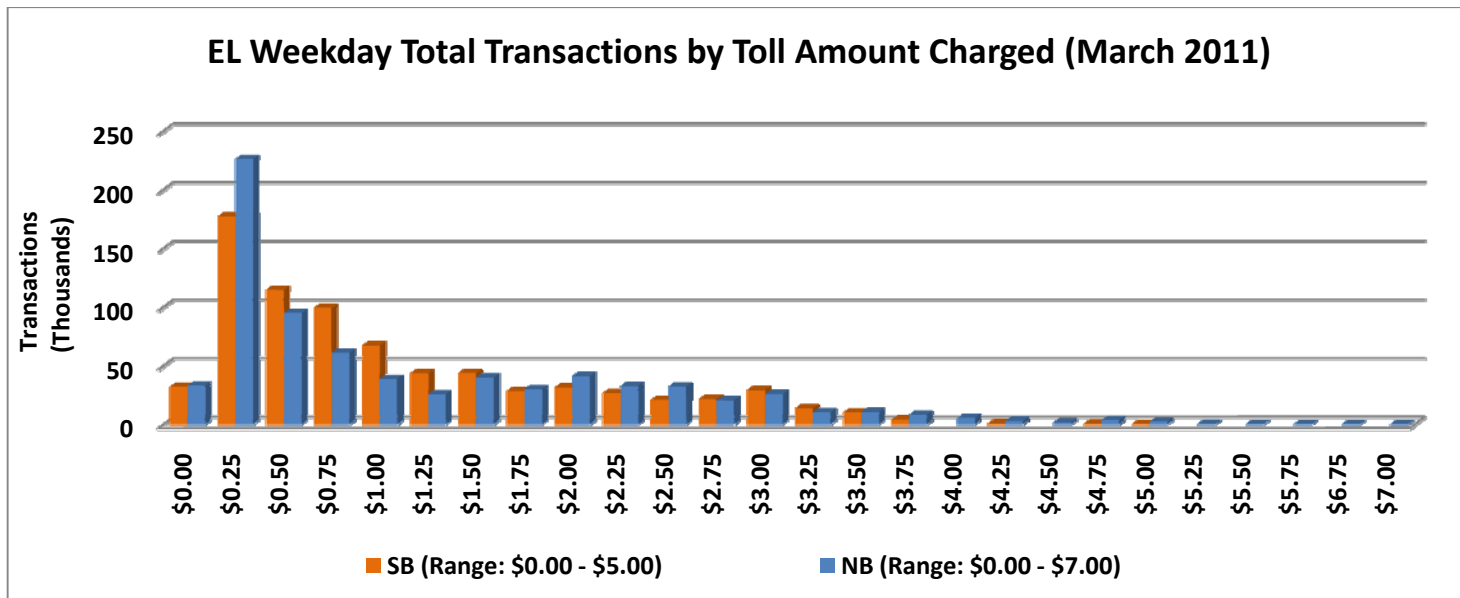


NOTE: ITD = Inception to Date



Revenue/Tolls Statistics

** Peak Period is defined as 6-9 AM (southbound) and 4-7 PM (northbound).

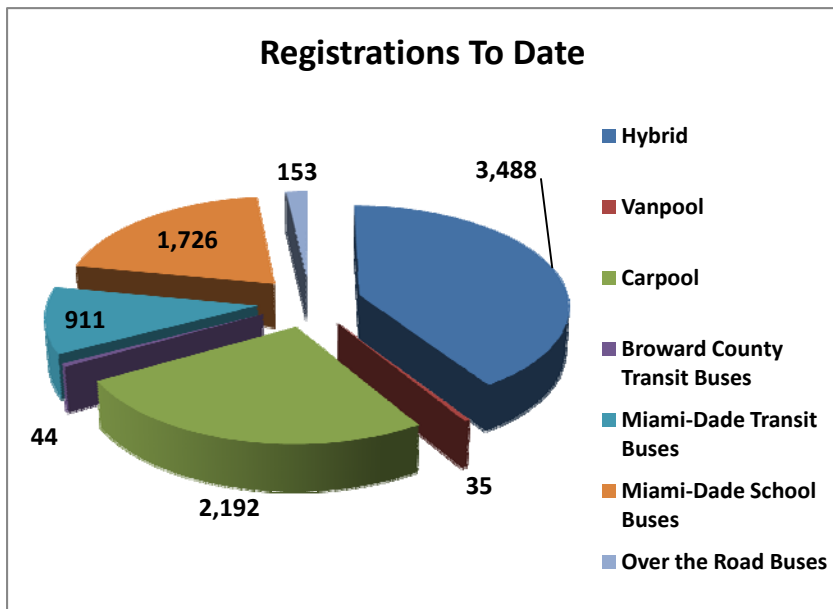


NOTE: ITD = Inception to Date

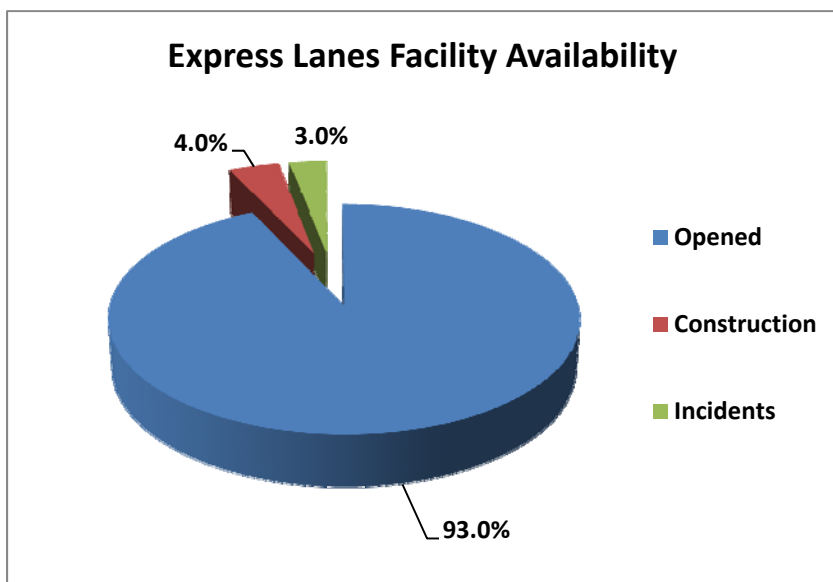


Registrations—Toll Exempt Trips

The total registrations through March 2011 increased to 8,549. *Toll Exempt Trips is not being reported this month due to uncertainties with the transit data. This is currently being investigated and will be reinserted upon confirmation.*



Facility Availability



The entire 95 Express Lanes (both directions) were open to motorists 93.0% of the time, while closed 4.0% due to planned construction and 3.0% due to non-recurring events.