



Summary of Monthly Operations – April 2011

General

January 2011 marked the one year anniversary for full operations of Phase 1 of 95 Express. The format of this report will remain as modified a year ago. In total, the 95 Express Lanes:

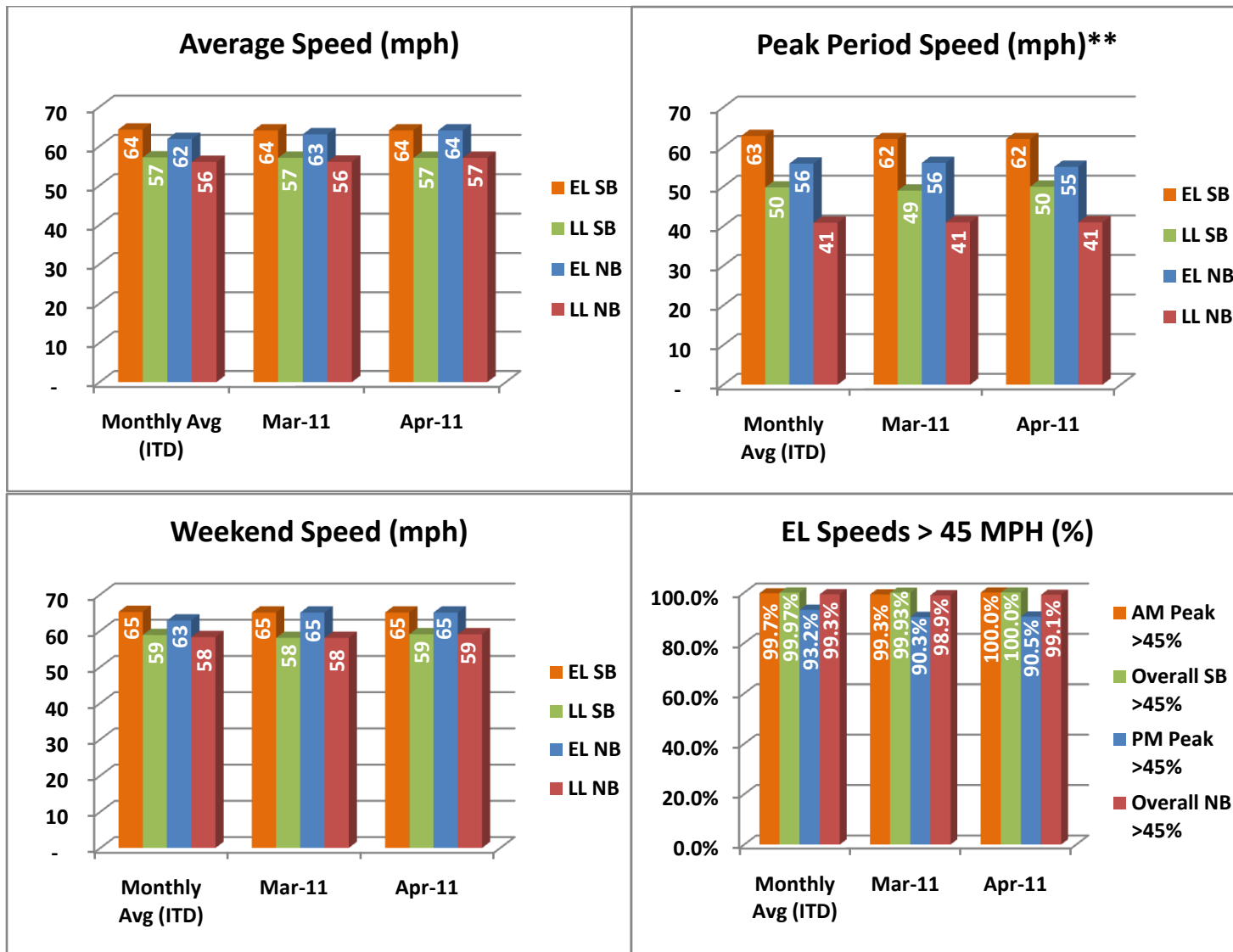
- ✓ Serviced 1,707,726 vehicle trips in April 2011 (6.81 million trips in 2011 to date), bringing the total since opening (December 5, 2008) to approximately 32.0 million trips.
- ✓ Had estimated monthly toll revenue of \$1.41 million in April 2011 (\$5.65 million in revenue in 2011 to date), bringing the total revenue to date to approximately \$24.4 million.
- ✓ Increased to a total of 8,614 registered vehicles.

<u>April 2011 Statistics</u>	<u>Southbound</u>			<u>Northbound</u>		
Trips	855,817			851,909		
Revenue	\$707,887			\$697,444		
Tolls						
- Range	\$0.00 - \$4.00			\$0.00 - \$6.25		
- Avg. Weekday	\$1.08			\$1.09		
- Avg. Peak Period**	\$1.80			\$2.38		
- Avg. Weekend	\$0.31			\$0.26		
- Avg. Off Peak	\$0.69			\$0.59		
- 85 th Percentile Weekday	\$2.25			\$2.25		
Volume (veh)	EL	LL		EL	LL	
- Avg. Weekday	31,901	111,077		31,742	101,916	
- Avg. Peak Period**	8,926	19,897		8,515	18,028	
Speed (mph)	EL	LL	Δ	EL	LL	Δ
- Avg. Overall	64	57	7	64	57	7
- Avg. Peak Period**	62	50	12	55	41	14
Operated Above 45 MPH	100.0%			99.1%		
Remained Open to Motorists	95.0%			94.5%		
Closed due to Planned Construction	3.6%			4.1%		
Closed due to Non-recurring Events	1.4%			1.4%		
<i>EL (Express Lanes); LL (Local Lanes)</i>						
<i>**Peak Period is defined as 6-9 AM (southbound) and 4-7 PM (northbound).</i>						



Operations/Traffic Statistics - Speed Data

** Peak Period is defined as 6-9 AM (southbound) and 4-7 PM (northbound).

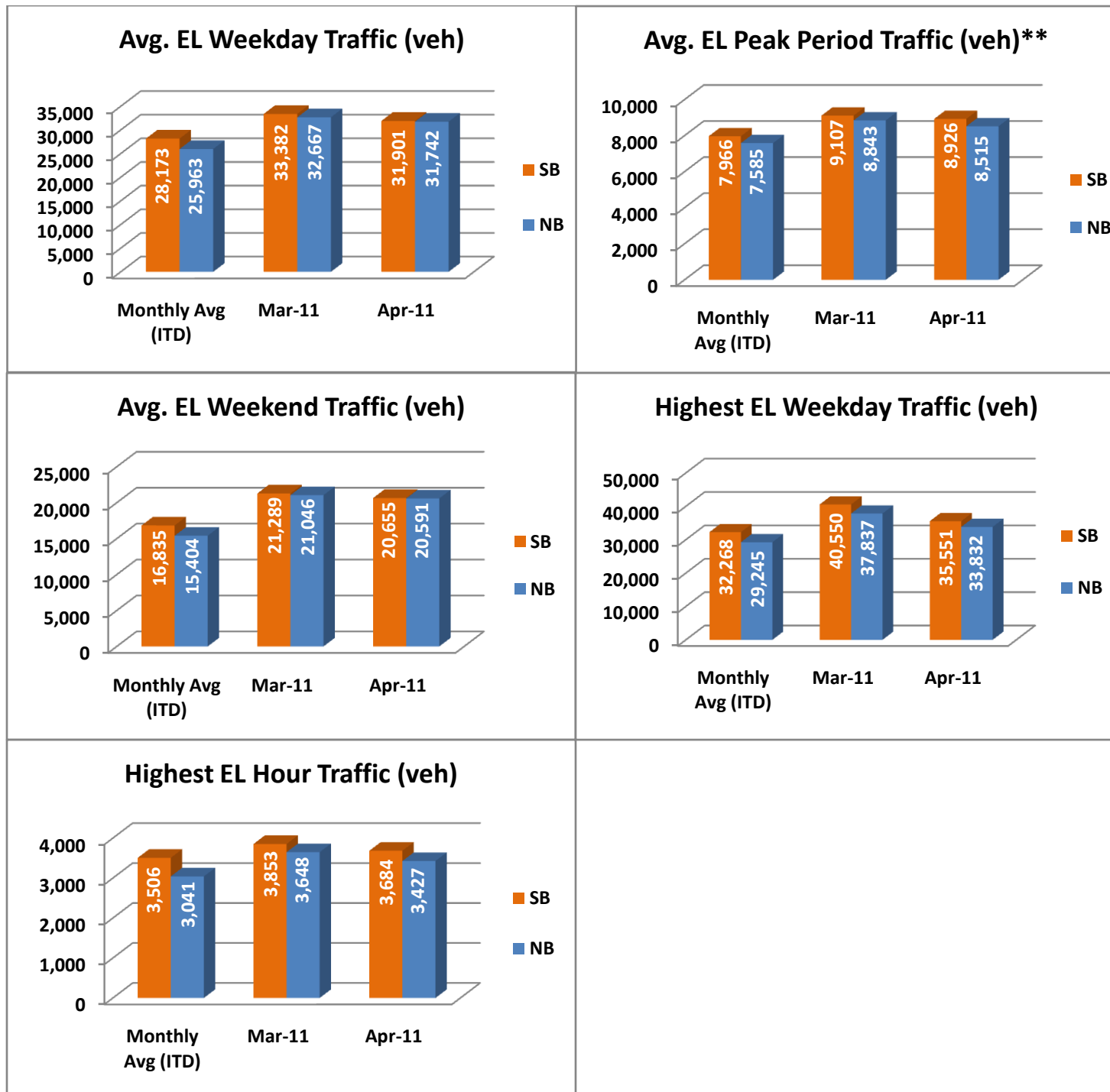


NOTE: ITD = Inception to Date



Operations/Traffic Statistics - Volume Data

** Peak Period is defined as 6-9 AM (southbound) and 4-7 PM (northbound).

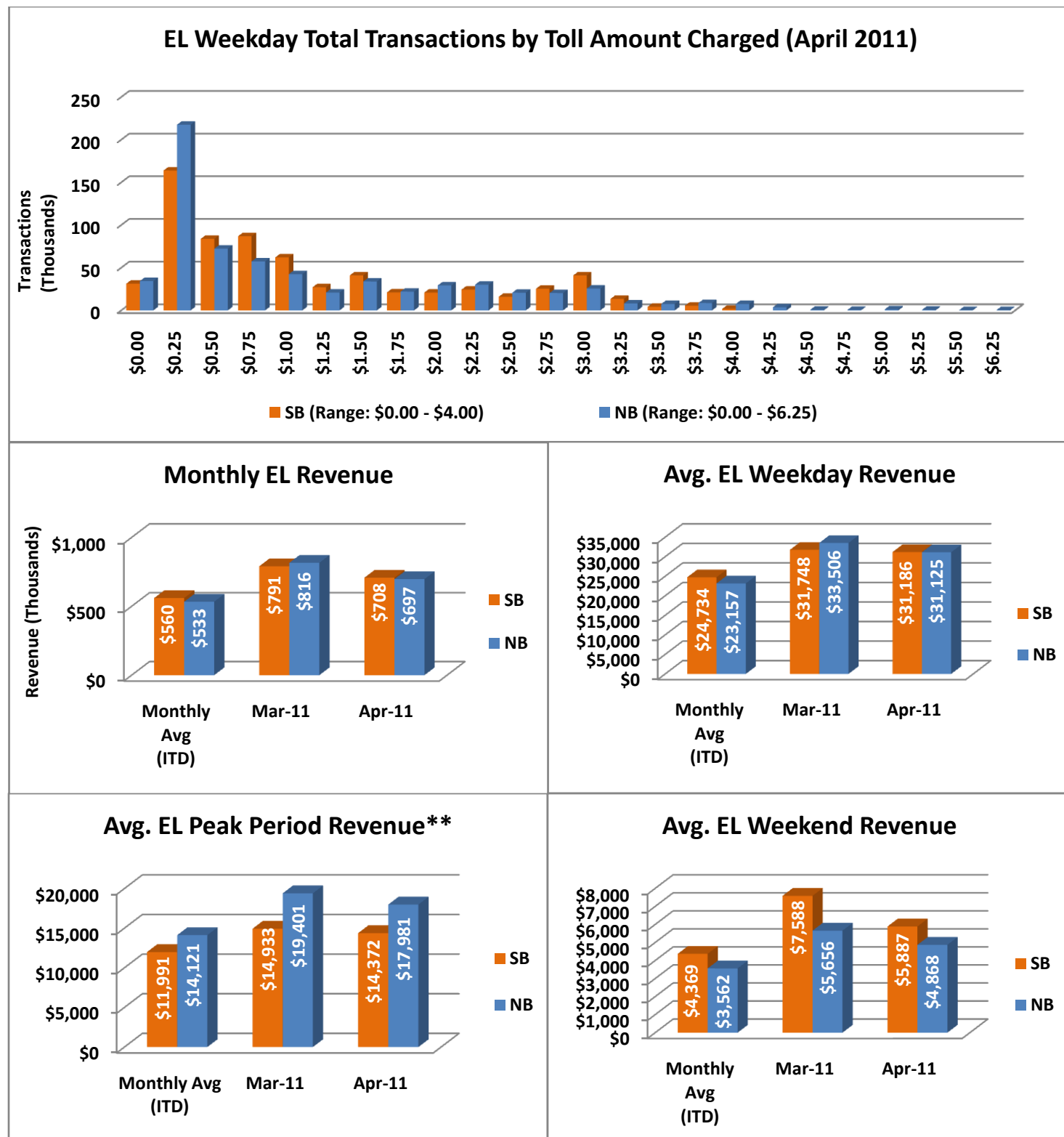


NOTE: ITD = Inception to Date



Revenue/Tolls Statistics

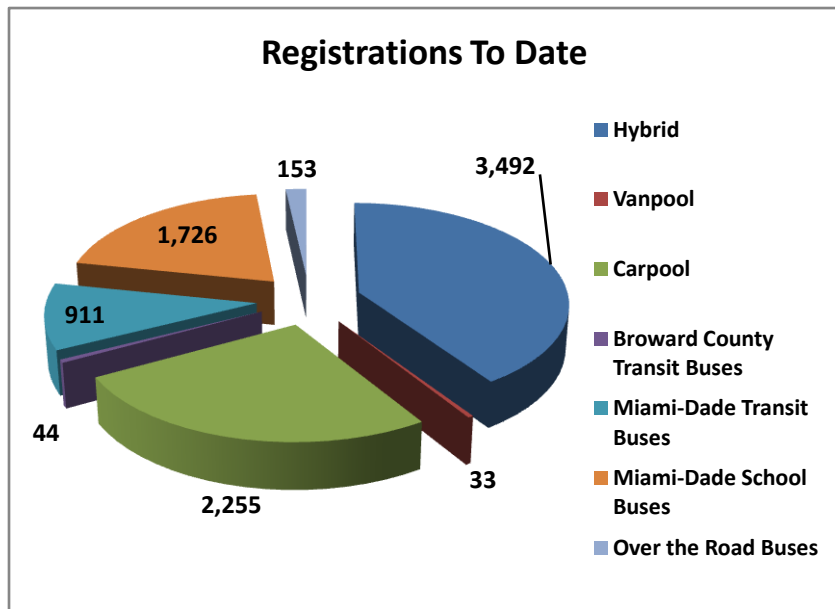
** Peak Period is defined as 6-9 AM (southbound) and 4-7 PM (northbound).



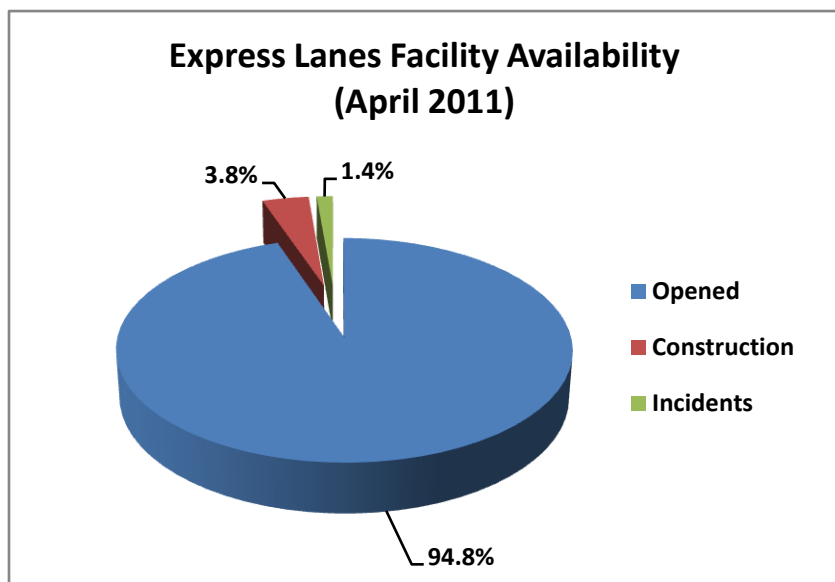
NOTE: ITD = Inception to Date

Registrations—Toll Exempt Trips

The total registrations through April 2011 increased to 8,614. *Toll Exempt Trips is not being reported this month due to uncertainties with the transit data. This is currently being investigated and will be reinserted upon confirmation.*



Facility Availability



The entire 95 Express Lanes (both directions) were open to motorists 94.8% of the time, while closed 3.8% due to planned construction and 1.4% due to non-recurring events.