



Summary of Monthly Operations – August 2011

General

In total, the 95 Express Lanes:

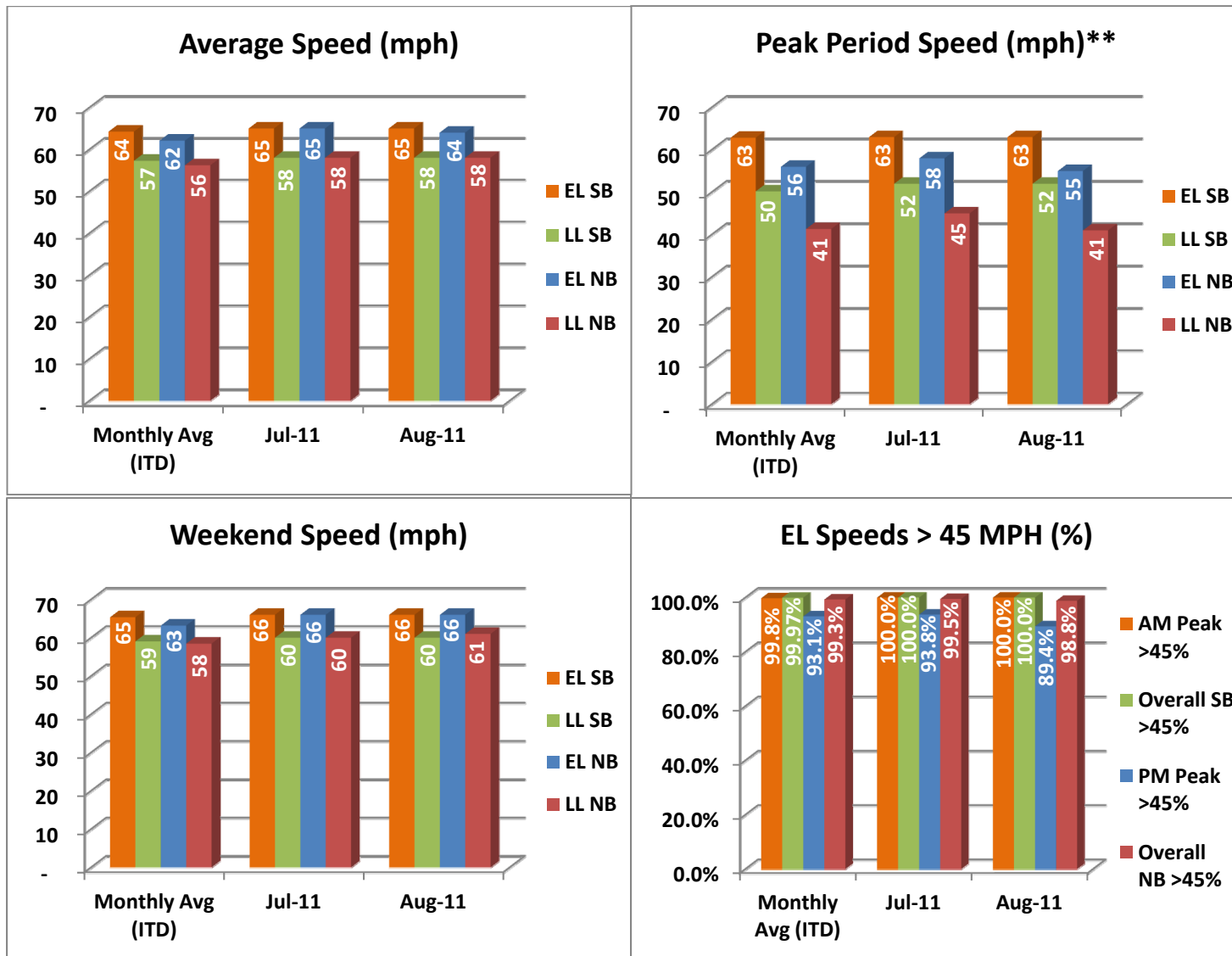
- ✓ Serviced 1,656,588 vehicle trips in August 2011 (13.3 million trips in 2011 to date), bringing the total since opening (December 5, 2008) to approximately 38.5 million trips.
- ✓ Had estimated monthly toll revenue of \$1.31 million in August 2011 (\$10.6 million in revenue in 2011 to date), bringing the total revenue to date to approximately \$29.4 million.
- ✓ Decreased to a total of 8,661 registered vehicles, resulting in 30,912 toll exempt trips.

<u>August 2011 Statistics</u>	<u>Southbound</u>		<u>Northbound</u>					
Total Trips	835,062		821,526					
Exempt Trips	16,192		14,720					
Revenue	\$606,851		\$705,840					
Tolls								
- Range	\$0.00 - \$3.75		\$0.00 - \$6.00					
- Avg. Weekday	\$0.89		\$1.07					
- Avg. Peak Period**	\$1.52		\$2.21					
- Avg. Weekend	\$0.23		\$0.23					
- Avg. Off Peak	\$0.56		\$0.60					
- 85 th Percentile Weekday	\$2.25		\$2.25					
Volume (veh)								
	EL	LL	EL	LL				
- Avg. Weekday	30,381	106,793	29,690	90,320				
- Avg. Peak Period**	8,694	19,449	8,390	16,984				
Speed (mph)								
	EL	LL	Δ	EL	LL	Δ		
- Avg. Overall	65	58	7	64	58	6		
- Avg. Peak Period**	63	52	11	55	41	14		
Operated Above 45 MPH					100.0%		98.8%	
Remained Open to Motorists					94.1%		94.6%	
Closed due to Planned Construction					4.1%		1.7%	
Closed due to Non-recurring Events					1.8%		3.0%	
<i>EL (Express Lanes); LL (Local Lanes)</i>								
<i>**Peak Period is defined as 6-9 AM (southbound) and 4-7 PM (northbound).</i>								



Operations/Traffic Statistics - Speed Data

** Peak Period is defined as 6-9 AM (southbound) and 4-7 PM (northbound).

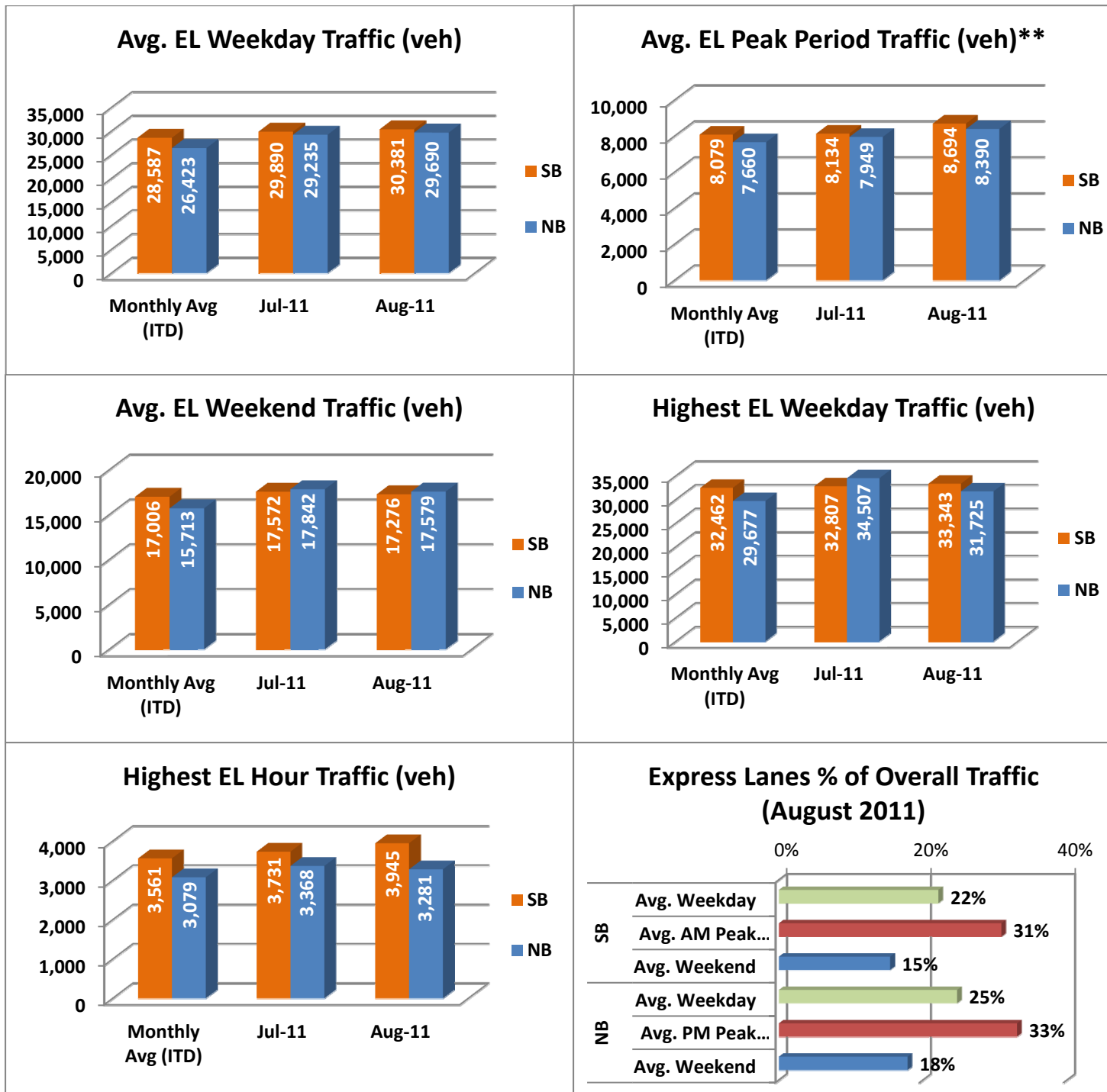


NOTE: ITD = Inception to Date



Operations/Traffic Statistics - Volume Data

** Peak Period is defined as 6-9 AM (southbound) and 4-7 PM (northbound).

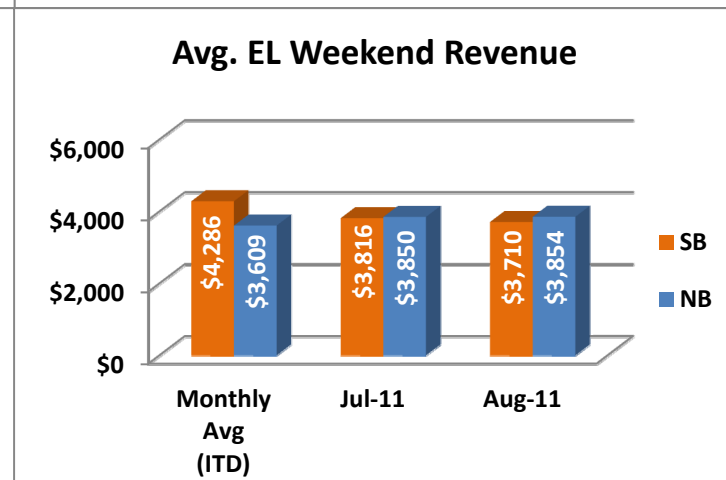
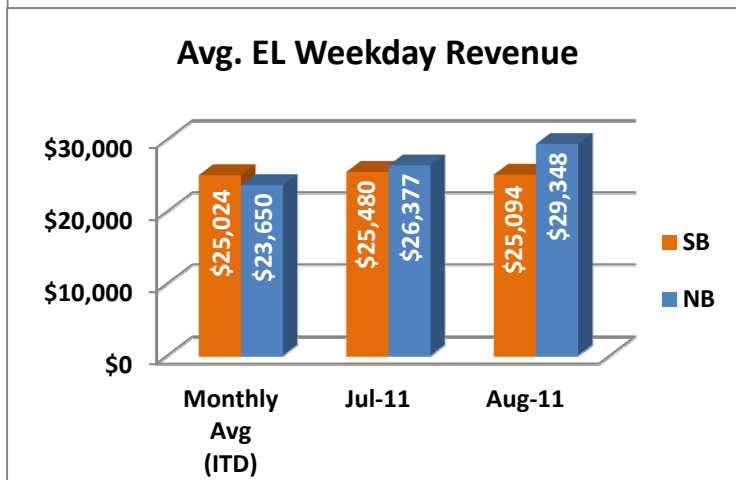
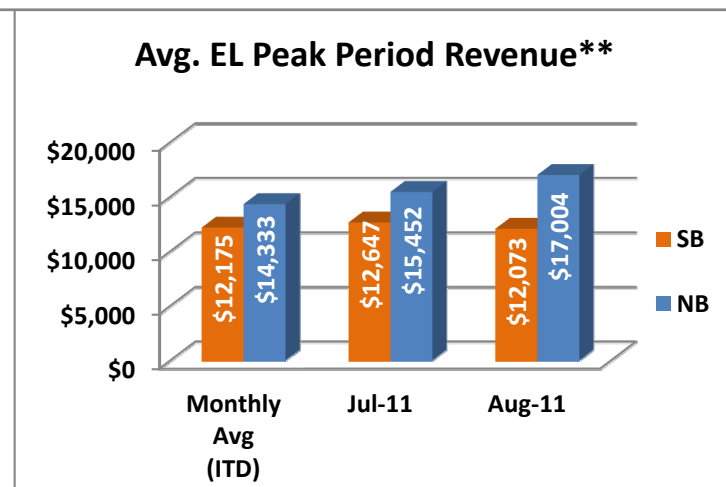
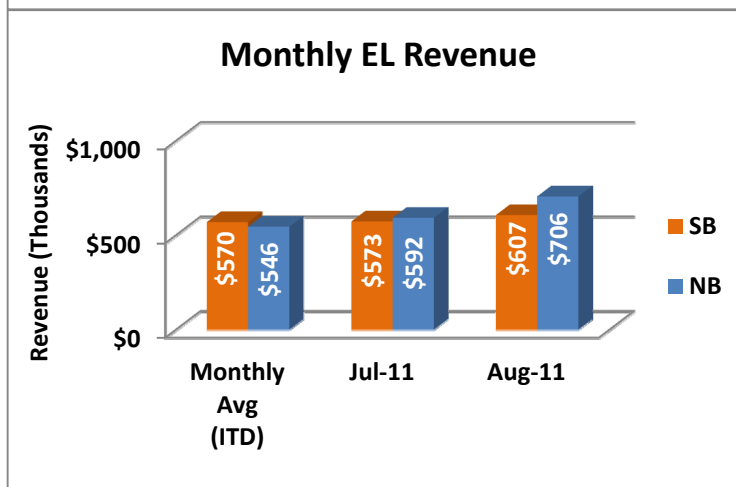
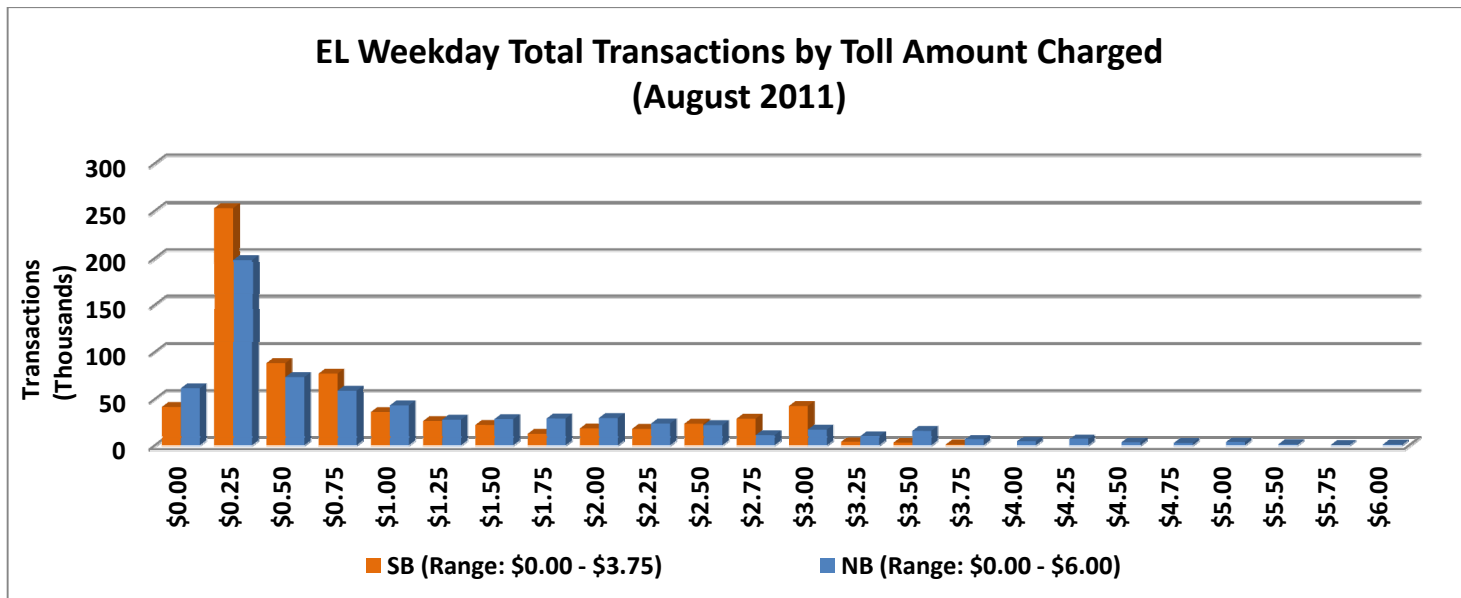


NOTE: ITD = Inception to Date



Revenue/Tolls Statistics

** Peak Period is defined as 6-9 AM (southbound) and 4-7 PM (northbound).

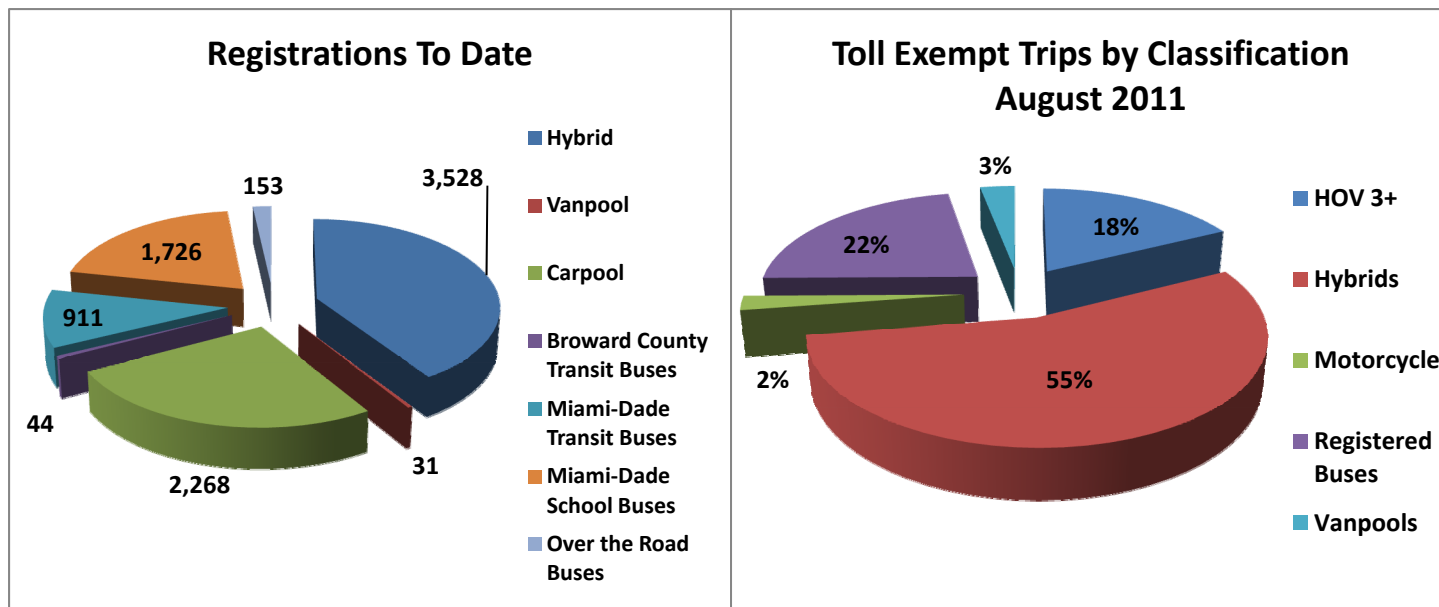


NOTE: ITD = Inception to Date

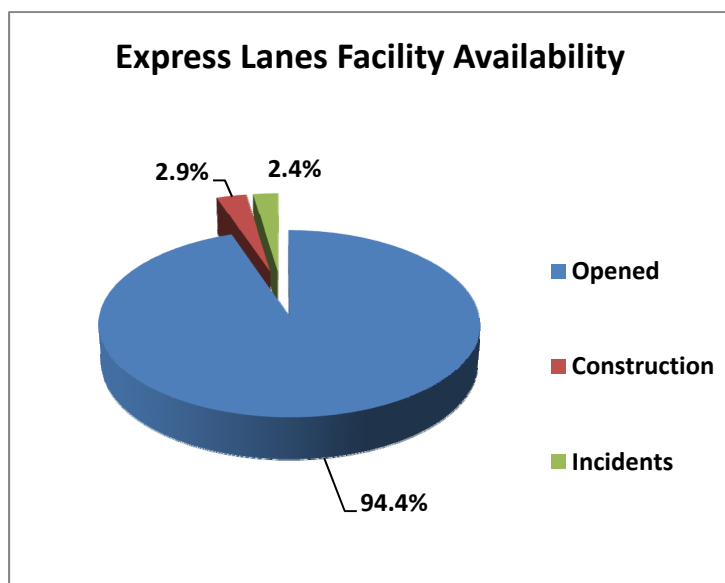


Registrations—Toll Exempt Trips

The total registrations through August 2011 decreased to 8,661. The 30,912 Toll Exempt Trips for this month are shown by classification below.



Facility Availability



The entire 95 Express lanes (both directions) were open to motorists 94.4% of the time, while closed 2.9% due to 8 planned construction/maintenance events (each lasting 5 hours, 24 minutes in duration on average) and 2.4% due to 169 non-recurring events (each lasting under 13 minutes in duration on average).