



Summary of Monthly Operations – October 2011

General

In total, the 95 Express Lanes:

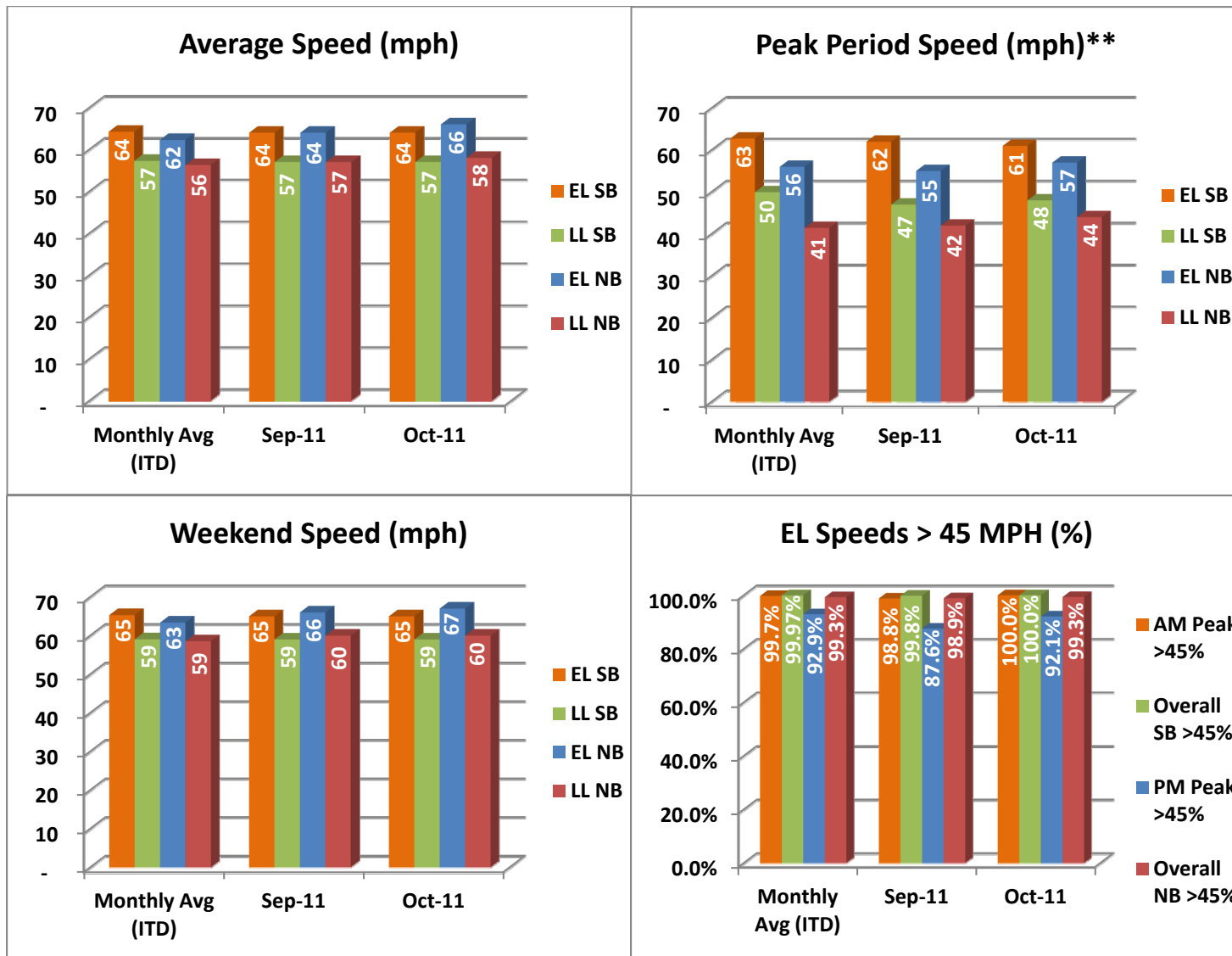
- ✓ Serviced 1,660,555 vehicle trips in October 2011 (16.6 million trips in 2011 to date), bringing the total since opening (December 5, 2008) to approximately 41.7 million trips.
- ✓ Had estimated monthly toll revenue of \$1.24 million in October 2011 (\$13.2 million in revenue in 2011 to date), bringing the total revenue to date to approximately \$32.0 million.
- ✓ Increased to a total of 8,626 registered vehicles, resulting in 25,793 toll exempt trips.

<u>October 2011 Statistics</u>	<u>Southbound</u>			<u>Northbound</u>		
Total Trips	840,594			819,961		
Exempt Trips	13,158			12,635		
Revenue						
	\$619,348			\$623,589		
Tolls						
- Range	\$0.00 - \$4.75			\$0.00 - \$6.00		
- Avg. Weekday	\$1.02			\$1.01		
- Avg. Peak Period**	\$1.78			\$2.17		
- Avg. Weekend	\$0.25			\$0.24		
- Avg. Off Peak	\$0.59			\$0.53		
- 85 th Percentile Weekday	\$2.50			\$2.25		
Volume (veh)						
	EL	LL		EL	LL	
- Avg. Weekday	31,638	106,432		30,773	93,931	
- Avg. Peak Period**	9,397	19,200		8,697	17,208	
Speed (mph)						
	EL	LL	Δ	EL	LL	Δ
- Avg. Overall	64	57	7	66	58	8
- Avg. Peak Period**	61	48	13	57	44	13
Operated Above 45 MPH						
	100.0%			99.3%		
Remained Open to Motorists						
	94.7%			95.0%		
Closed due to Planned Construction						
	3.2%			3.3%		
Closed due to Non-recurring Events						
	2.0%			1.7%		
<i>EL (Express Lanes); LL (Local Lanes)</i>						
<i>**Peak Period is defined as 6-9 AM (southbound) and 4-7 PM (northbound).</i>						



Operations/Traffic Statistics - Speed Data

** Peak Period is defined as 6-9 AM (southbound) and 4-7 PM (northbound).

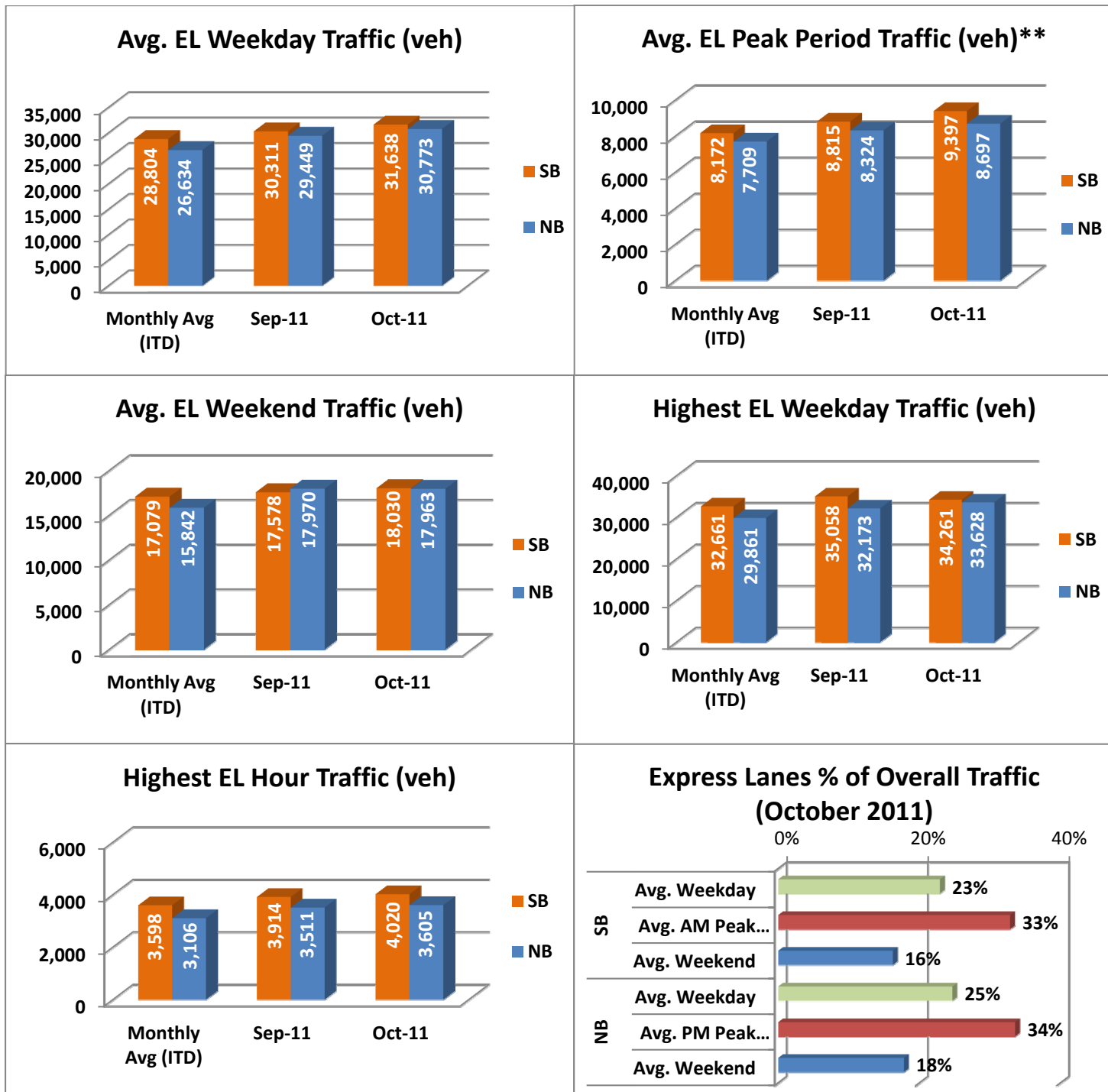


NOTE: ITD = Inception to Date



Operations/Traffic Statistics - Volume Data

** Peak Period is defined as 6-9 AM (southbound) and 4-7 PM (northbound).

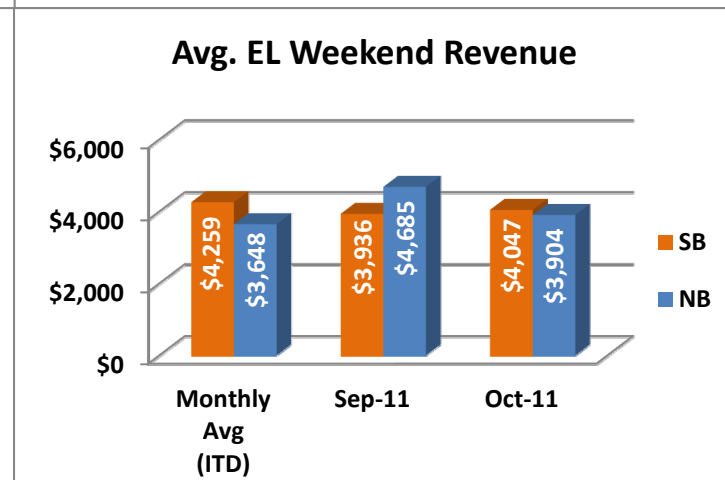
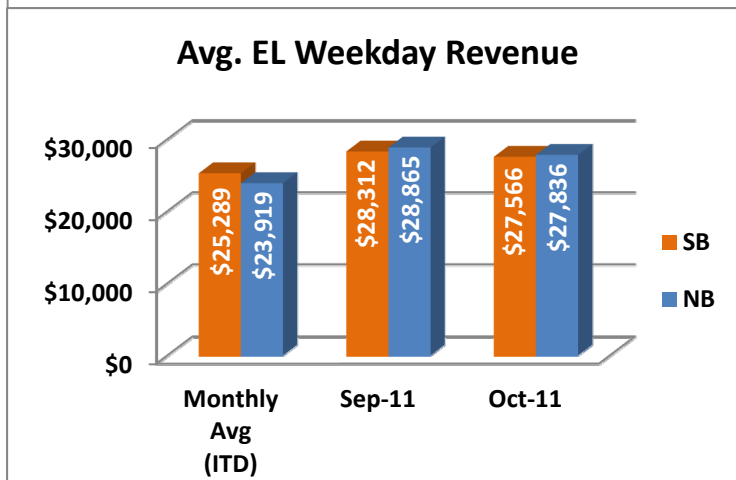
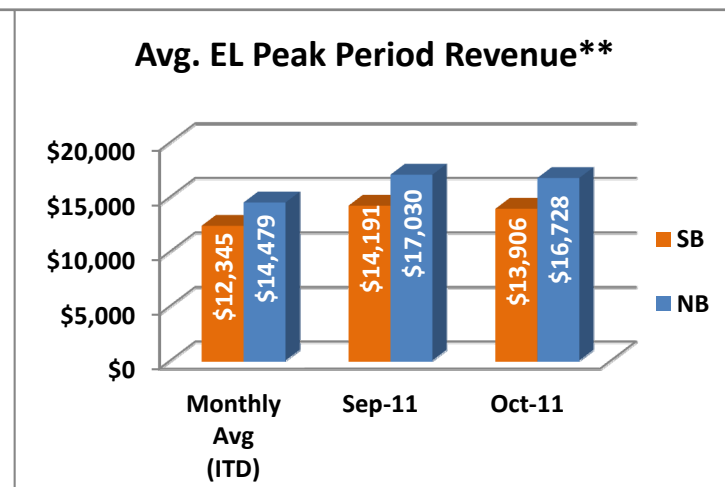
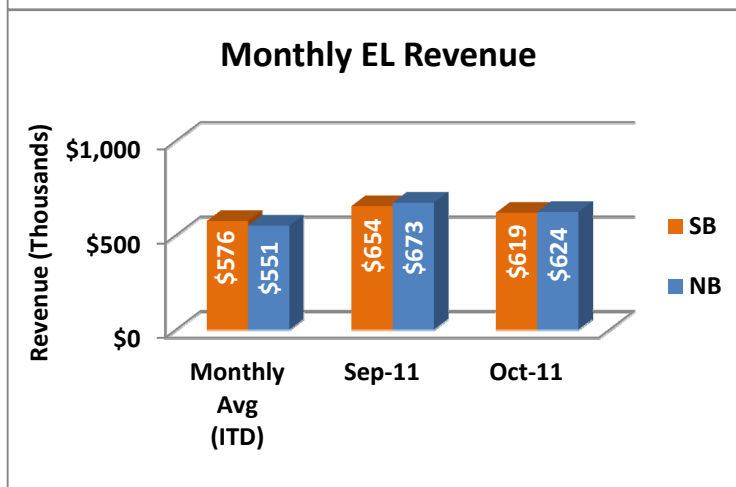
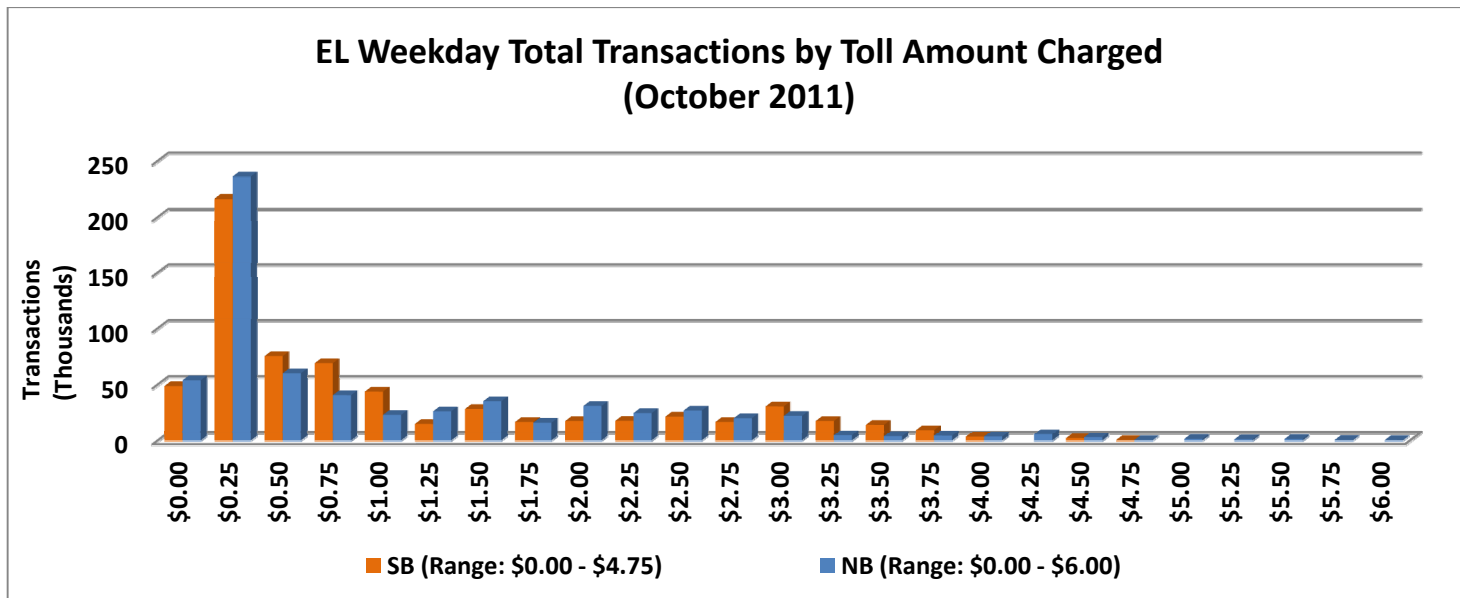


NOTE: ITD = Inception to Date



Revenue/Tolls Statistics

** Peak Period is defined as 6-9 AM (southbound) and 4-7 PM (northbound).

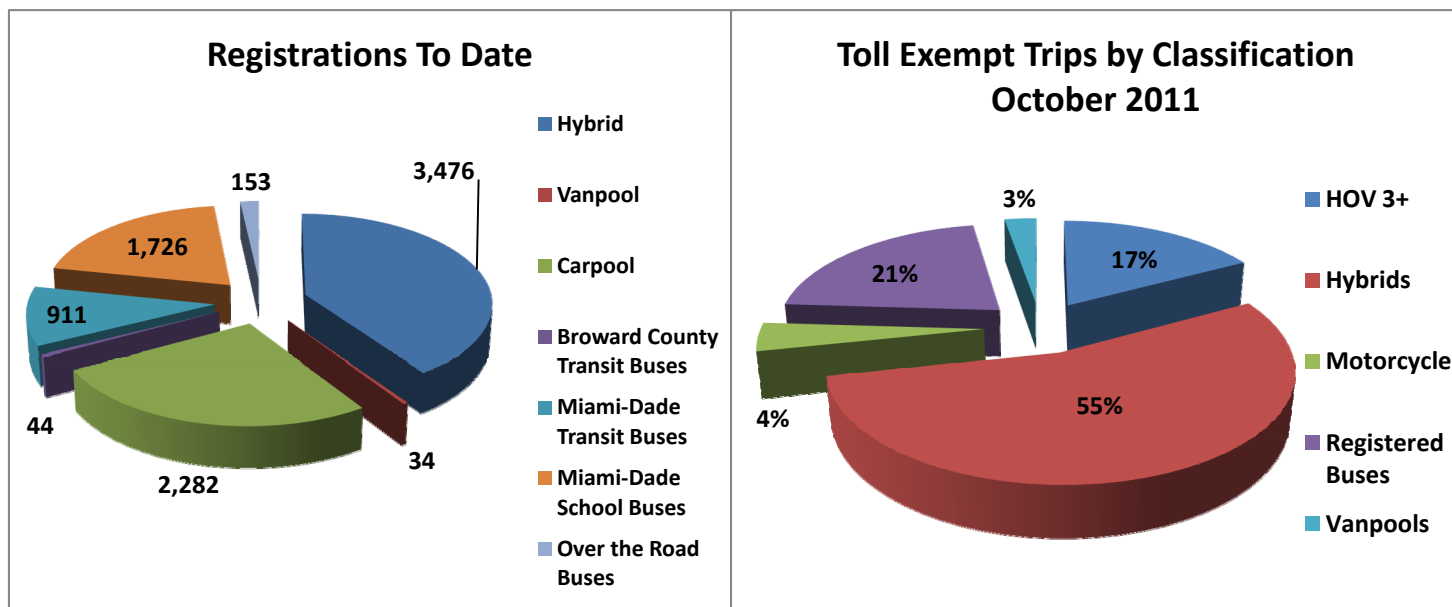


NOTE: ITD = Inception to Date

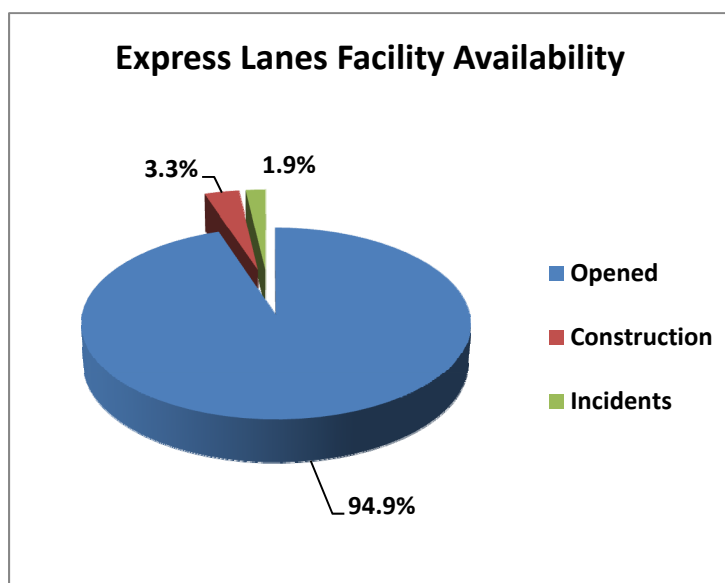


Registrations—Toll Exempt Trips

The total registrations through October 2011 increased to 8,626. The 25,793 Toll Exempt Trips for this month are shown by classification below.



Facility Availability



The entire 95 Express lanes (both directions) were open to motorists 94.9% of the time, while closed 3.3% due to 9 planned construction/maintenance events (each lasting 3 hours, 23 minutes in duration on average) and 1.9% due to 133 non-recurring events (each lasting under 13 minutes in duration on average).