



## Summary of Monthly Operations – November 2011

### General

In total, the 95 Express Lanes:

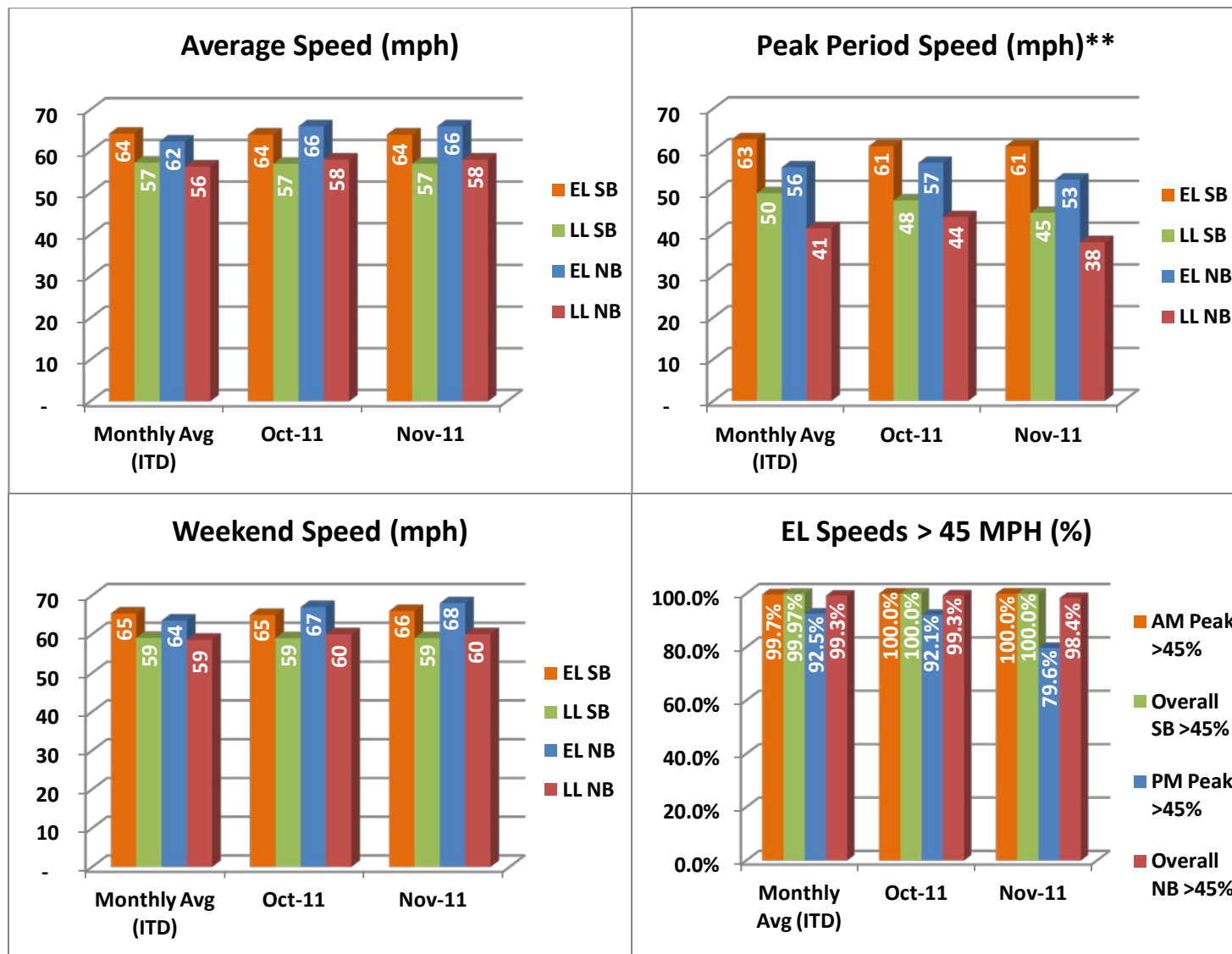
- ✓ Serviced 1,676,474 vehicle trips in November 2011 (18.3 million trips in 2011 to date), bringing the total since opening (December 5, 2008) to approximately 43.4 million trips.
- ✓ Had estimated monthly toll revenue of \$1.36 million in November 2011 (\$14.6 million in revenue in 2011 to date), bringing the total revenue to date to approximately \$33.3 million.
- ✓ Increased to a total of 8,680 registered vehicles, resulting in 26,255 toll exempt trips.

<u>November 2011 Statistics</u>	<u>Southbound</u>			<u>Northbound</u>		
<b>Total Trips</b>	845,943			830,531		
<b>Exempt Trips</b>	13,1454			12,801		
<b>Revenue</b>						
	\$667,707			\$697,181		
<b>Tolls</b>						
- Range	\$0.00 - \$4.50			\$0.00 - \$7.00		
- Avg. Weekday	\$1.01			\$1.09		
- Avg. Peak Period**	\$1.72			\$2.30		
- Avg. Weekend	\$0.28			\$0.23		
- Avg. Off Peak	\$0.64			\$0.55		
- 85 <sup>th</sup> Percentile Weekday	\$2.25			\$2.25		
<b>Volume (veh)</b>						
	<b>EL</b>	<b>LL</b>		<b>EL</b>	<b>LL</b>	
- Avg. Weekday	31,215	107,729		30,721	95,101	
- Avg. Peak Period**	8,527	19,506		8,472	17,261	
<b>Speed (mph)</b>						
	<b>EL</b>	<b>LL</b>	<b>Δ</b>	<b>EL</b>	<b>LL</b>	<b>Δ</b>
- Avg. Overall	64	57	7	66	58	8
- Avg. Peak Period**	61	45	16	53	38	15
<b>Operated Above 45 MPH</b>						
	100.0%			98.4%		
<b>Remained Open to Motorists</b>						
	94.8%			95.1%		
<b>Closed due to Planned Construction</b>						
	3.8%			3.3%		
<b>Closed due to Non-recurring Events</b>						
	1.5%			1.6%		
<i>EL (Express Lanes); LL (Local Lanes)</i>						
<i>**Peak Period is defined as 6-9 AM (southbound) and 4-7 PM (northbound).</i>						



## Operations/Traffic Statistics - Speed Data

\*\* Peak Period is defined as 6-9 AM (southbound) and 4-7 PM (northbound).

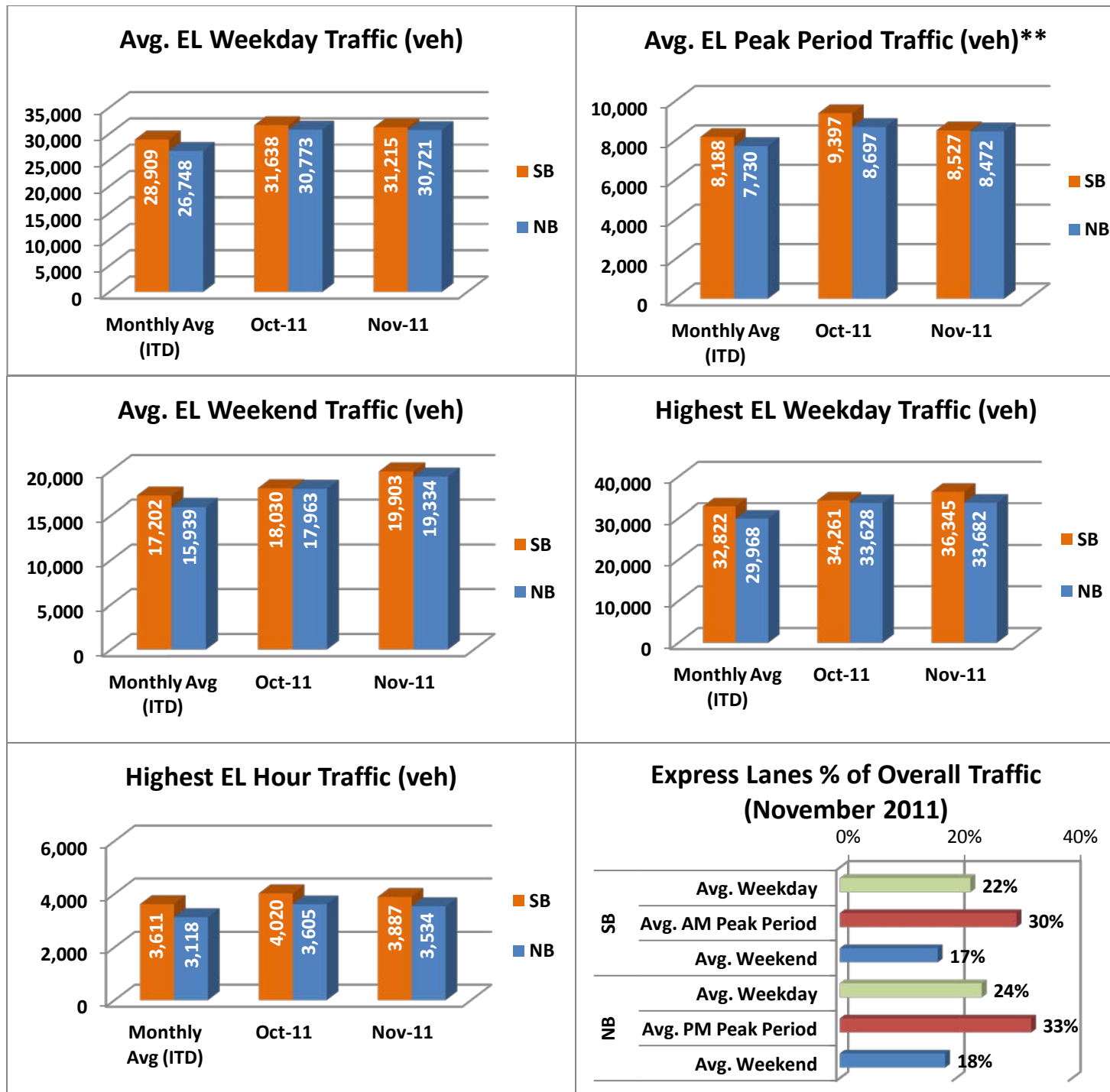


NOTE: ITD = Inception to Date



## Operations/Traffic Statistics - Volume Data

\*\* Peak Period is defined as 6-9 AM (southbound) and 4-7 PM (northbound).

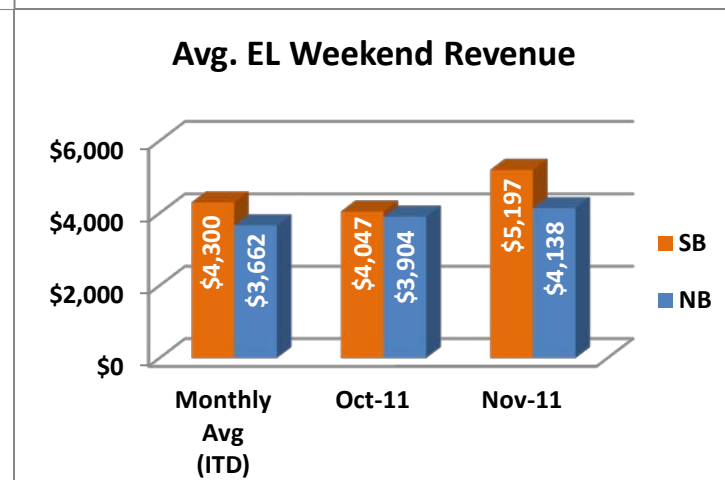
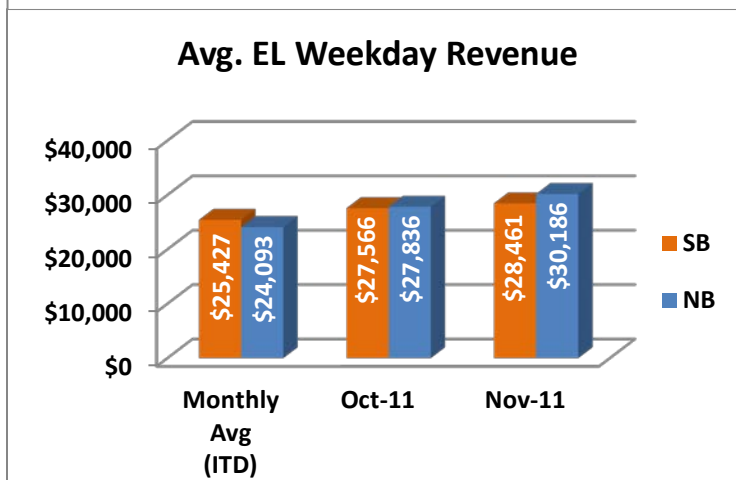
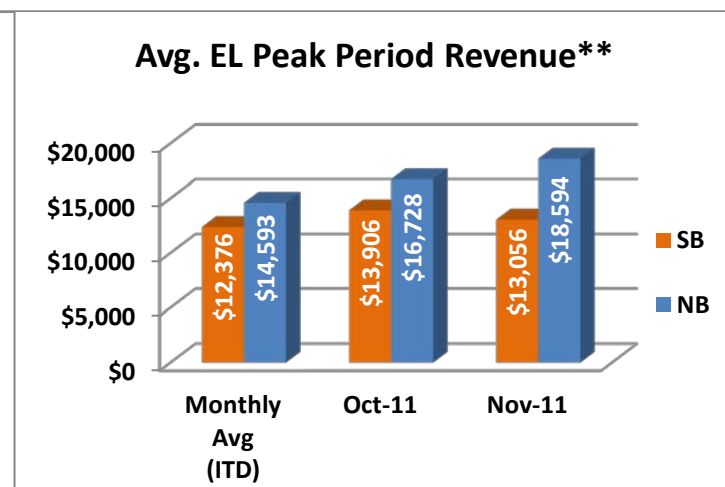
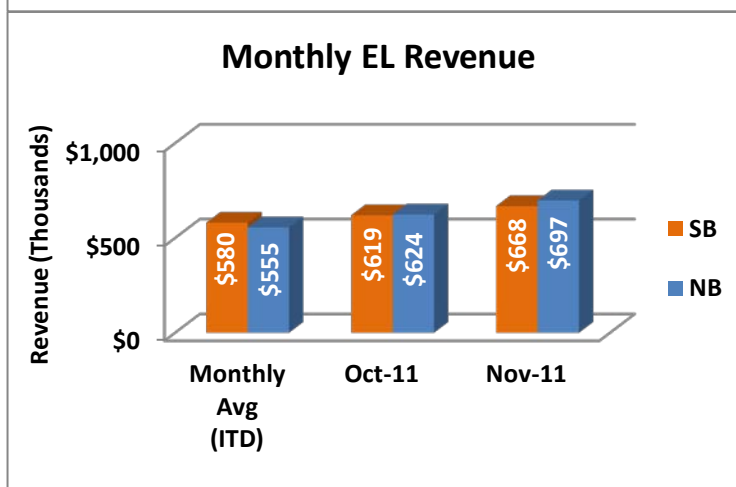
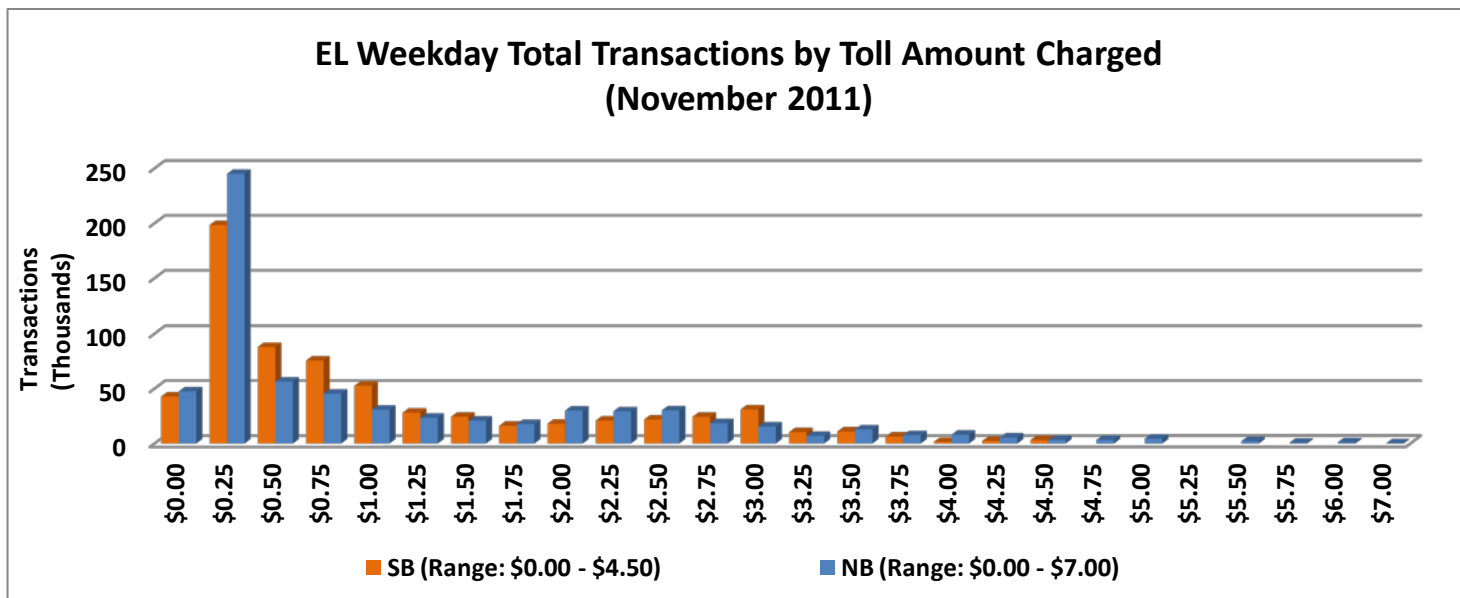


NOTE: ITD = Inception to Date



## Revenue/Tolls Statistics

\*\* Peak Period is defined as 6-9 AM (southbound) and 4-7 PM (northbound).

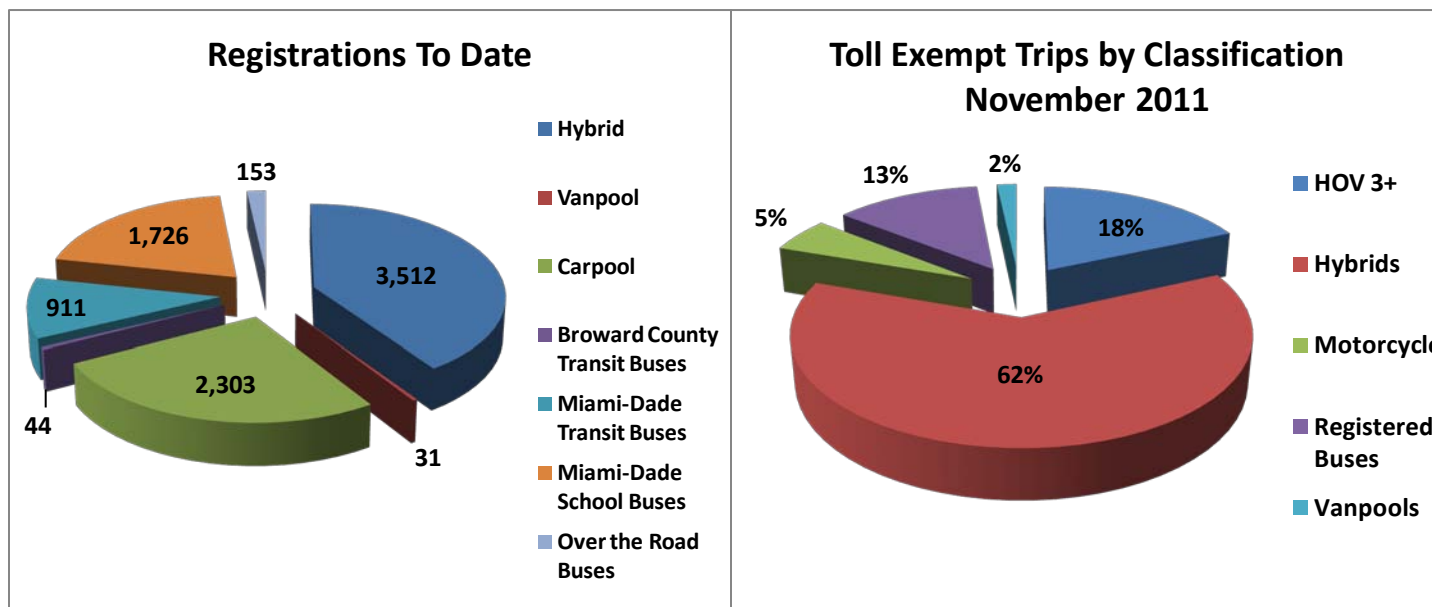


NOTE: ITD = Inception to Date

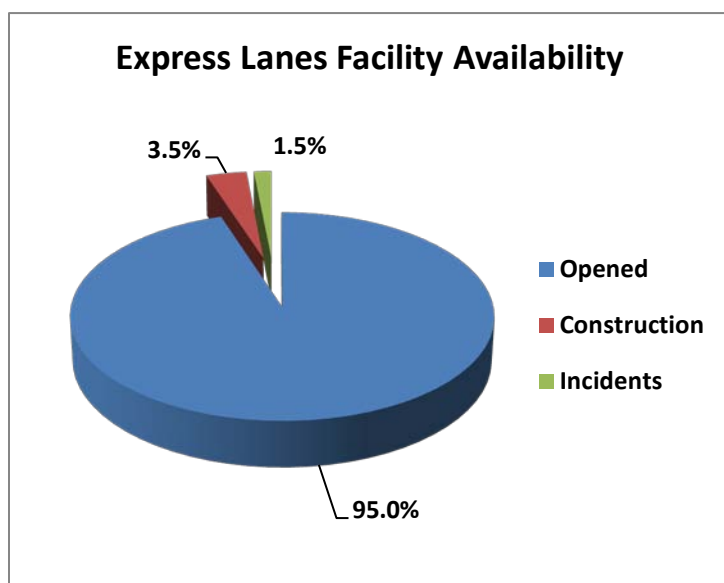


## Registrations—Toll Exempt Trips

The total registrations through November 2011 increased to 8,680. The 26,255 Toll Exempt Trips for this month are shown by classification below.



## Facility Availability



The entire 95 Express lanes (both directions) were open to motorists 95.0% of the time, while closed 3.5% due to 9 planned construction/maintenance events (each lasting 5 hours, 38 minutes in duration on average) and 1.5% due to 108 non-recurring events (each lasting under 13 minutes in duration on average).