



## Summary of Monthly Operations – July 2012

### General

In total, the 95 Express Lanes:

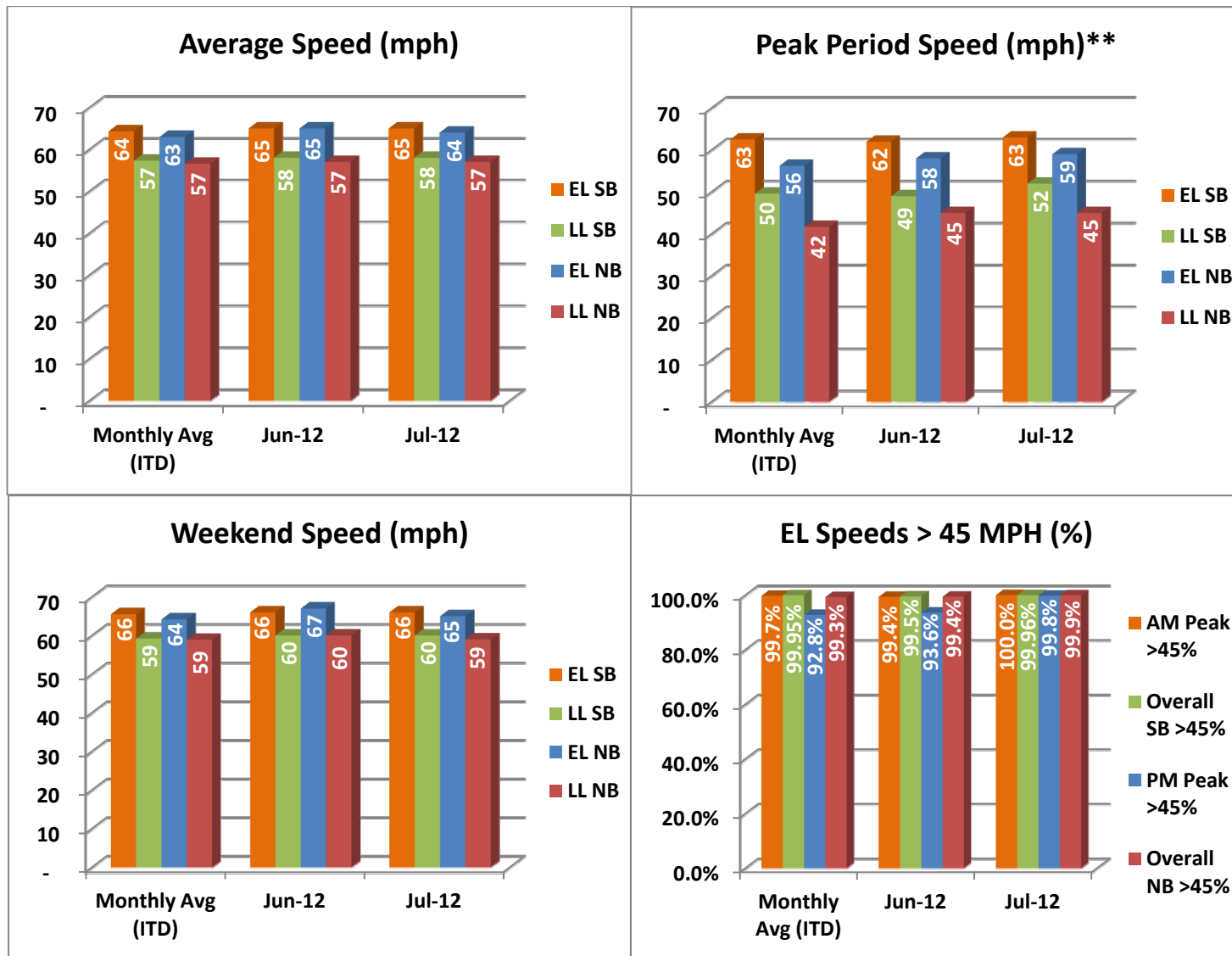
- ✓ Serviced 1,719,743 vehicle trips in July 2012 (12.3 million trips in 2012 to date), bringing the total since opening (December 5, 2008) to approximately 57.4 million trips.
- ✓ Had estimated monthly toll revenue of \$1.09 million in July 2012 (\$10.3 million in 2012 to date), bringing the total revenue to date to approximately \$44.8 million.
- ✓ Increased to a total of 8,856 registered vehicles, resulting in 33,090 toll exempt trips.

<u>July 2012 Statistics</u>	<u>Southbound</u>		<u>Northbound</u>			
<b>Total Trips</b>	867,846		851,897			
<b>Exempt Trips</b>	17,562		15,528			
<b>Revenue</b>						
	\$573,821		\$512,213			
<b>Tolls</b>						
- Range	\$0.00 - \$5.50		\$0.00 - \$5.75			
- Avg. Weekday	\$0.89		\$0.81			
- Avg. Peak Period**	\$1.48		\$1.73			
- Avg. Weekend	\$0.23		\$0.24			
- Avg. Off Peak	\$0.68		\$0.47			
- 85 <sup>th</sup> Percentile Weekday	\$2.00		\$1.75			
<b>Volume (veh)</b>						
	<b>EL</b>	<b>LL</b>	<b>EL</b>	<b>LL</b>		
- Avg. Weekday	31,488	106,687	30,725	102,231		
- Avg. Peak Period**	10,782	18,614	8,344	19,193		
<b>Speed (mph)</b>						
	<b>EL</b>	<b>LL</b>	<b>Δ</b>	<b>EL</b>	<b>LL</b>	<b>Δ</b>
- Avg. Overall	65	58	7	64	57	7
- Avg. Peak Period**	63	52	11	59	45	14
<b>Operated Above 45 MPH</b>						
	99.96%		99.94%			
<b>Remained Open to Motorists</b>						
	95.4%		94.2%			
<b>Closed due to Planned Construction</b>						
	3.0%		3.0%			
<b>Closed due to Non-recurring Events</b>						
	1.6%		2.8%			
EL (Express Lanes); LL (Local Lanes)						
**Peak Period is defined as 6-9 AM (southbound) and 4-7 PM (northbound).						



## Operations/Traffic Statistics - Speed Data

\*\* Peak Period is defined as 6-9 AM (southbound) and 4-7 PM (northbound).

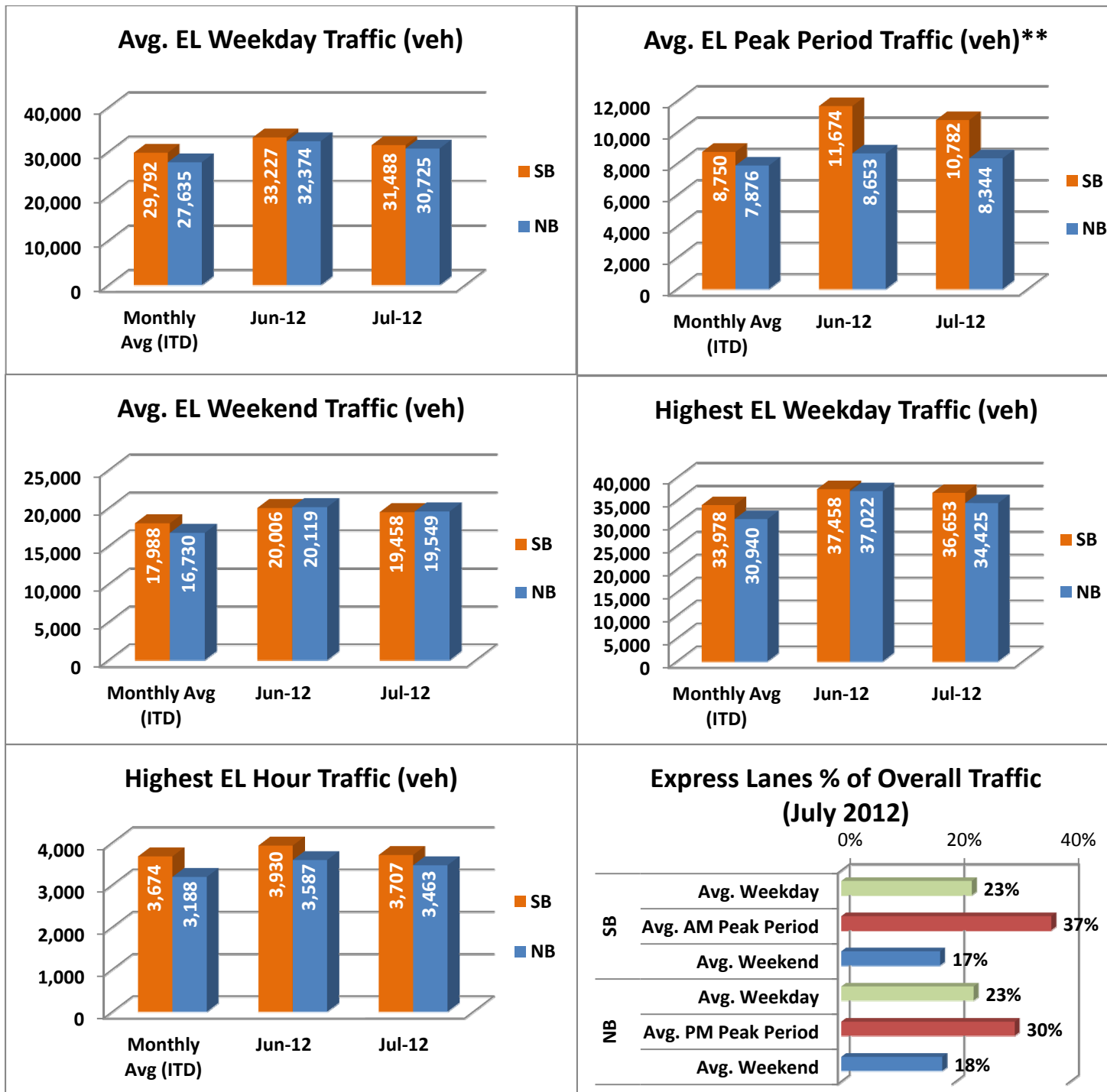


NOTE: ITD = Inception to Date



## Operations/Traffic Statistics - Volume Data

\*\* Peak Period is defined as 6-9 AM (southbound) and 4-7 PM (northbound).

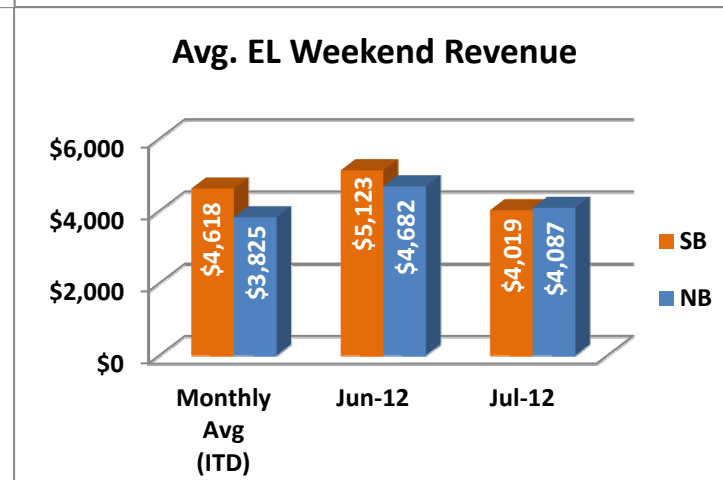
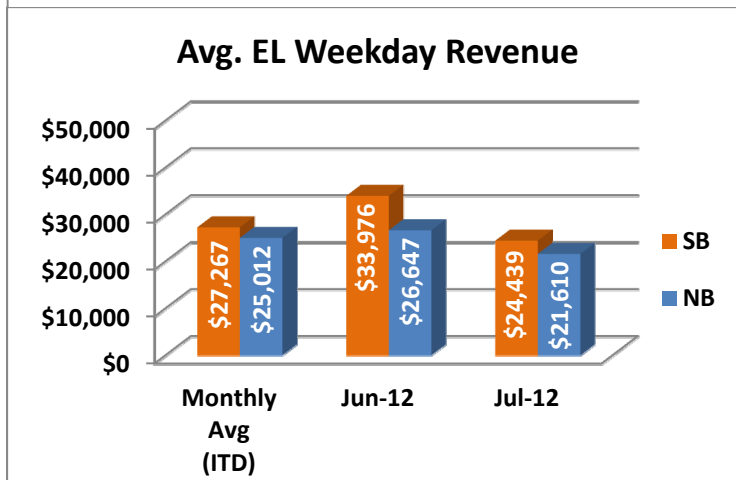
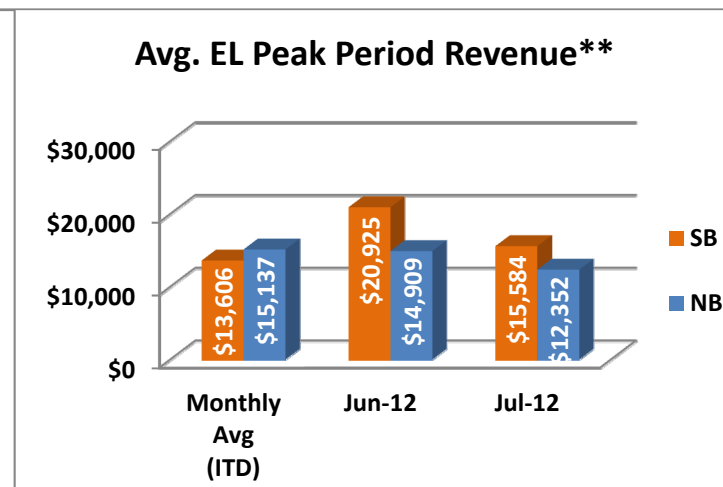
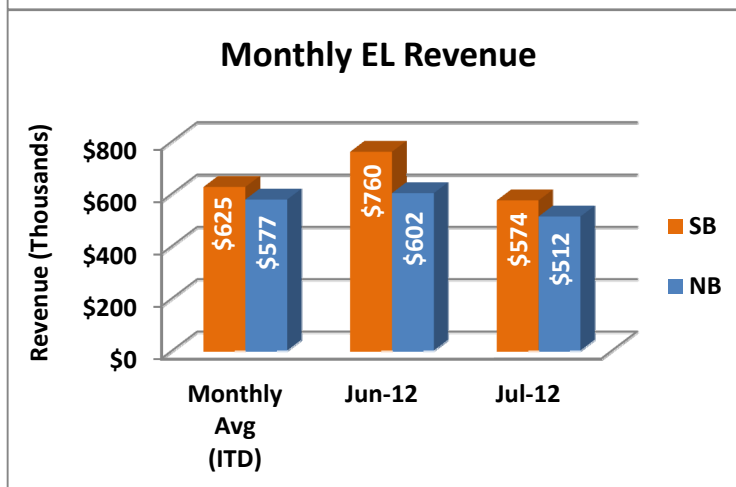
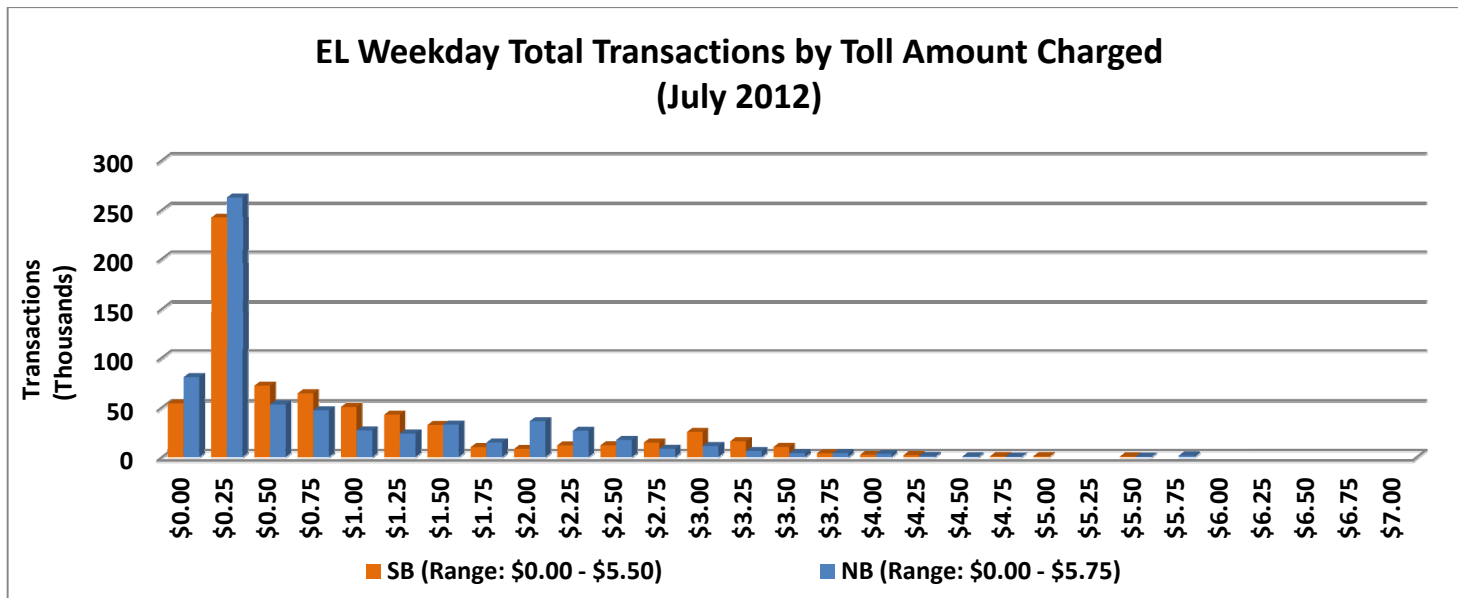


NOTE: ITD = Inception to Date



## Revenue/Tolls Statistics

\*\* Peak Period is defined as 6-9 AM (southbound) and 4-7 PM (northbound).

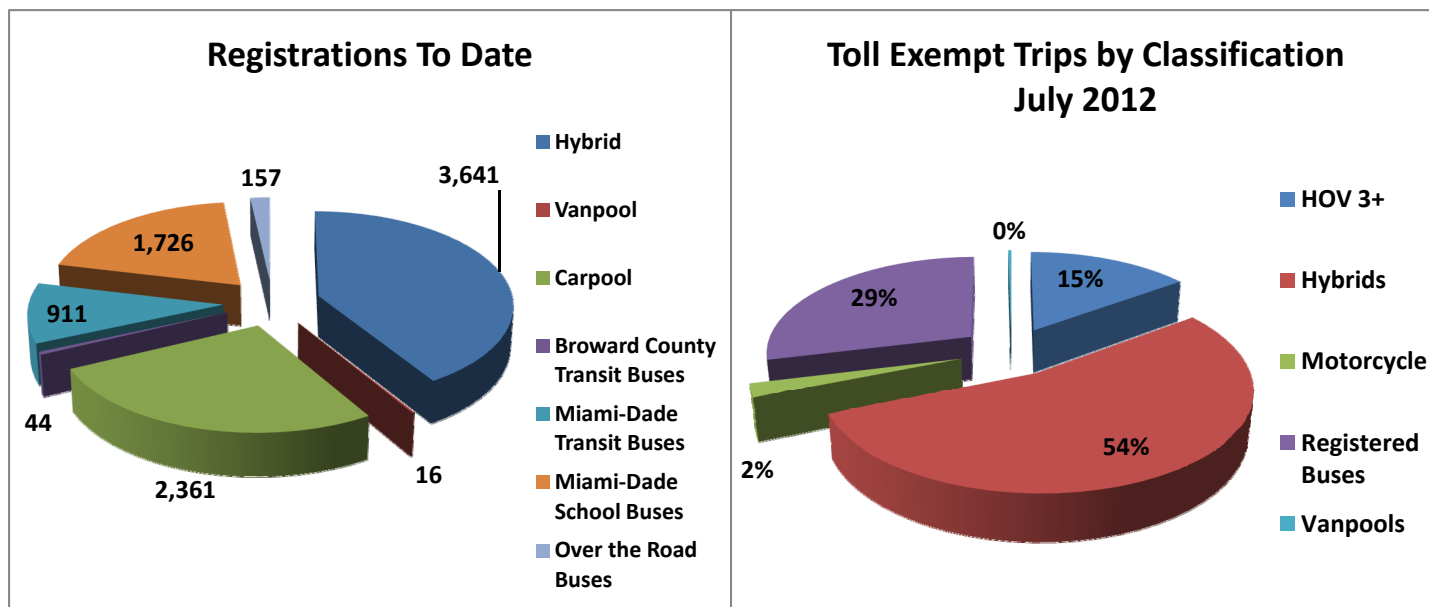


NOTE: ITD = Inception to Date



## Registrations—Toll Exempt Trips

The total registrations through July 2012 increased to 8,856. The 33,090 Toll Exempt Trips for this month are shown by classification below.



\*Note: a portion of the Vanpool data is included within Registered Buses.

## Facility Availability



The entire 95 Express lanes (both directions) were open to motorists 94.8% of the time, while closed 3.0% due to 8 planned construction/ maintenance events (each lasting 5 hours, 36 minutes in duration on average) and 2.1% due to 158 non-recurring events (each lasting just over 12 minutes in duration on average).