



Summary of Monthly Operations – October 2012

General

In total, the 95 Express Lanes:

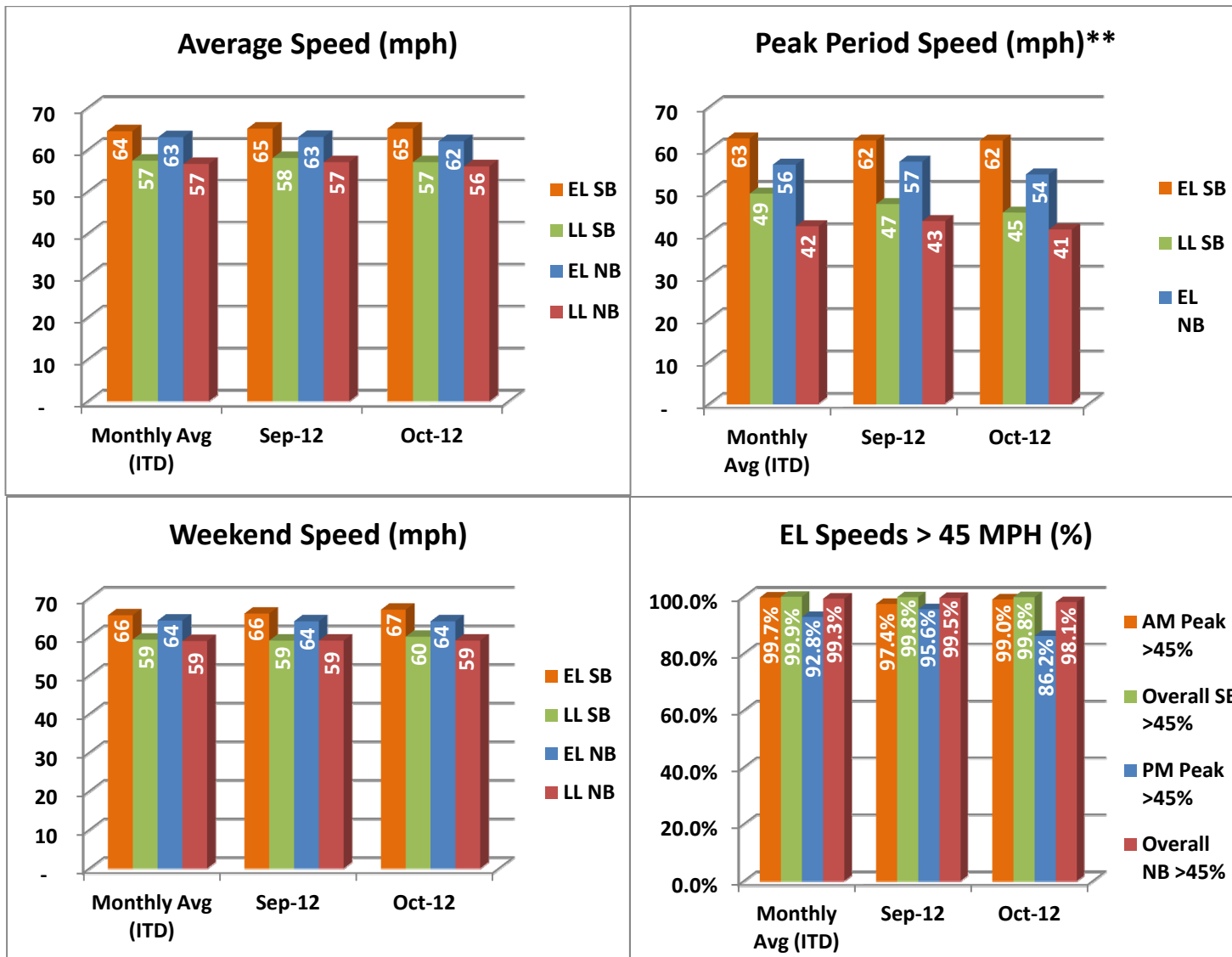
- ✓ Serviced 1,845,517 vehicle trips in October 2012 (17.5 million trips in 2012 to date), bringing the total since opening (December 5, 2008) to approximately 62.6 million trips.
- ✓ Had estimated monthly toll revenue of \$1.50 million in October 2012 (\$14.1 million in 2012 to date), bringing the total revenue to date to approximately \$48.7 million.
- ✓ Increased to a total of 8,916 registered vehicles, resulting in 40,286 toll exempt trips.

<u>October 2012 Statistics</u>	<u>Southbound</u>		<u>Northbound</u>			
Total Trips	941,264		904,253			
Exempt Trips	21,128		19,158			
Revenue						
	\$758,803		\$737,013			
Tolls						
- Range	\$0.00 - \$6.00		\$0.00 - \$7.00			
- Avg. Weekday	\$1.08		\$1.10			
- Avg. Peak Period**	\$1.89		\$2.47			
- Avg. Weekend	\$0.28		\$0.26			
- Avg. Off Peak	\$0.75		\$0.59			
- 85 th Percentile Weekday	\$2.50		\$2.25			
Volume (veh)						
	EL	LL	EL	LL		
- Avg. Weekday	33,492	103,160	32,235	101,581		
- Avg. Peak Period**	9,505	18,160	8,768	18,829		
Speed (mph)						
	EL	LL	Δ	EL	LL	Δ
- Avg. Overall	65	57	8	62	56	6
- Avg. Peak Period**	62	45	17	54	41	13
Operated Above 45 MPH						
	99.8%		98.1%			
Remained Open to Motorists						
	94.7%		94.3%			
Closed due to Planned Construction						
	3.1%		2.2%			
Closed due to Non-recurring Events						
	2.2%		3.5%			
<i>EL (Express Lanes); LL (Local Lanes)</i>						
<i>**Peak Period is defined as 6-9 AM (southbound) and 4-7 PM (northbound).</i>						



Operations/Traffic Statistics - Speed Data

** Peak Period is defined as 6-9 AM (southbound) and 4-7 PM (northbound).

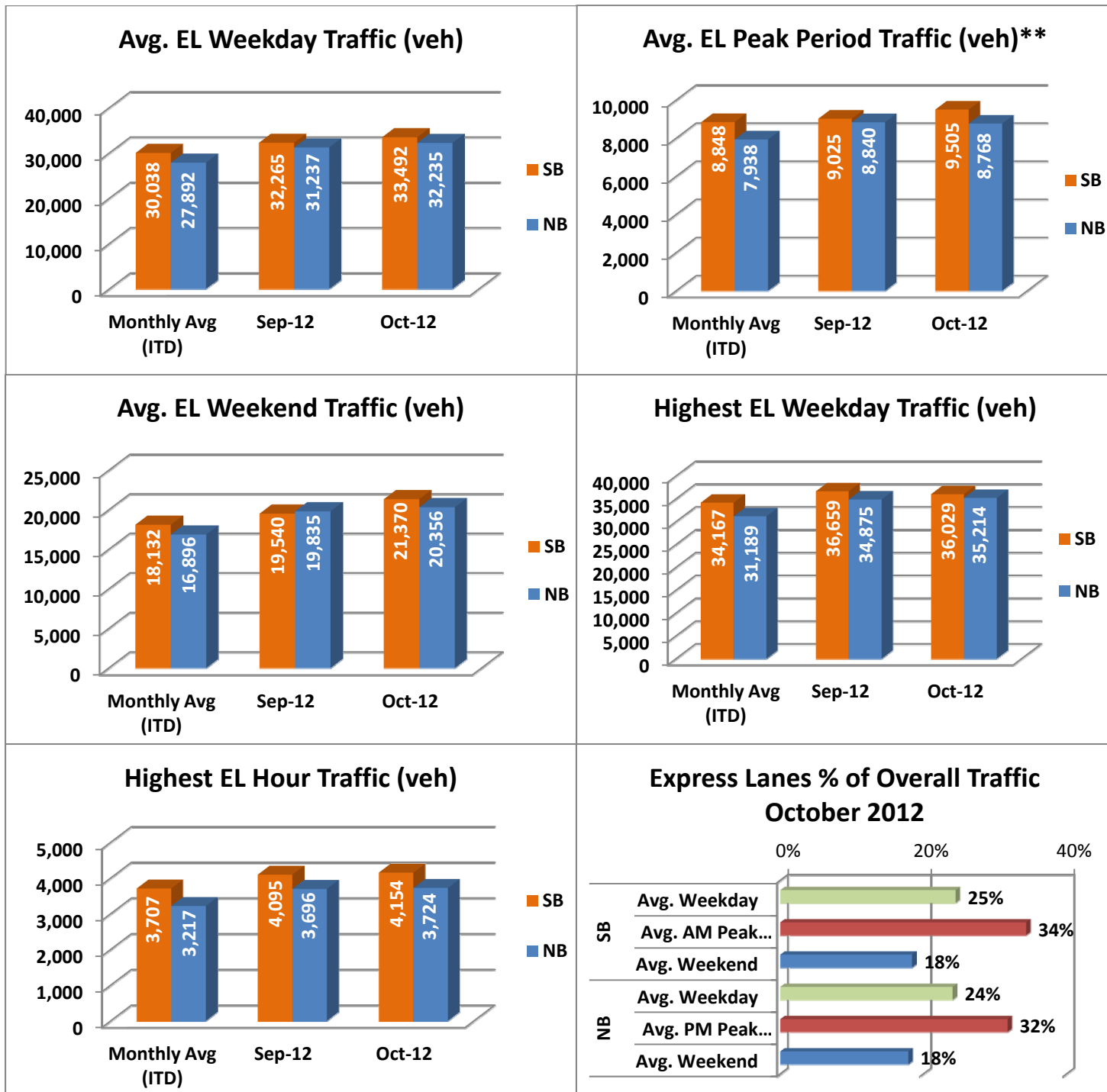


NOTE: ITD = Inception to Date



Operations/Traffic Statistics - Volume Data

** Peak Period is defined as 6-9 AM (southbound) and 4-7 PM (northbound).

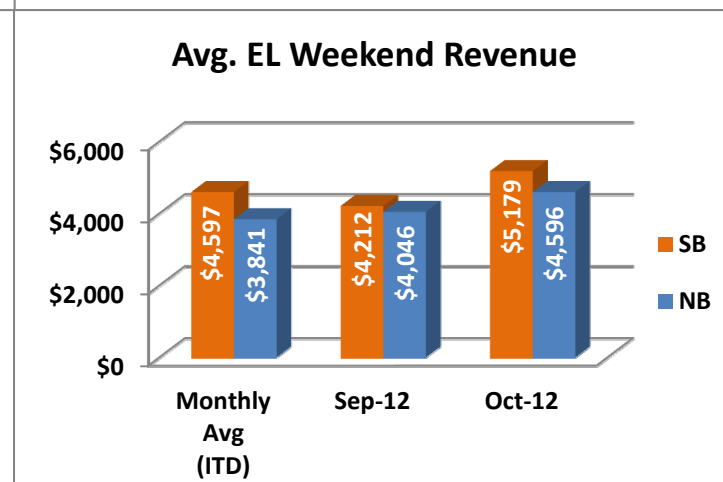
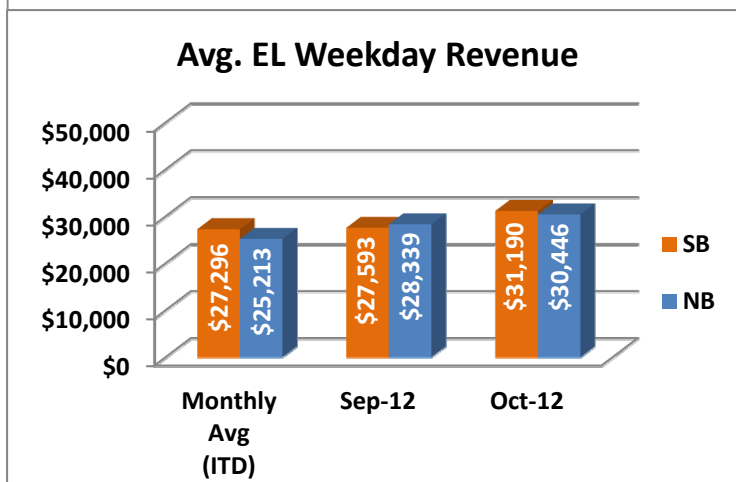
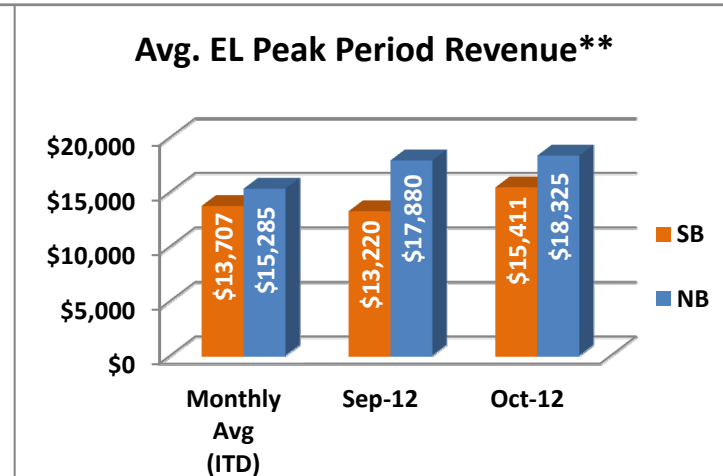
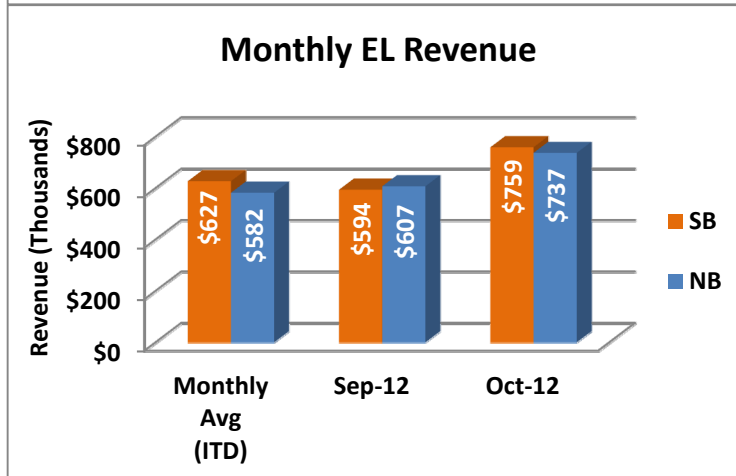
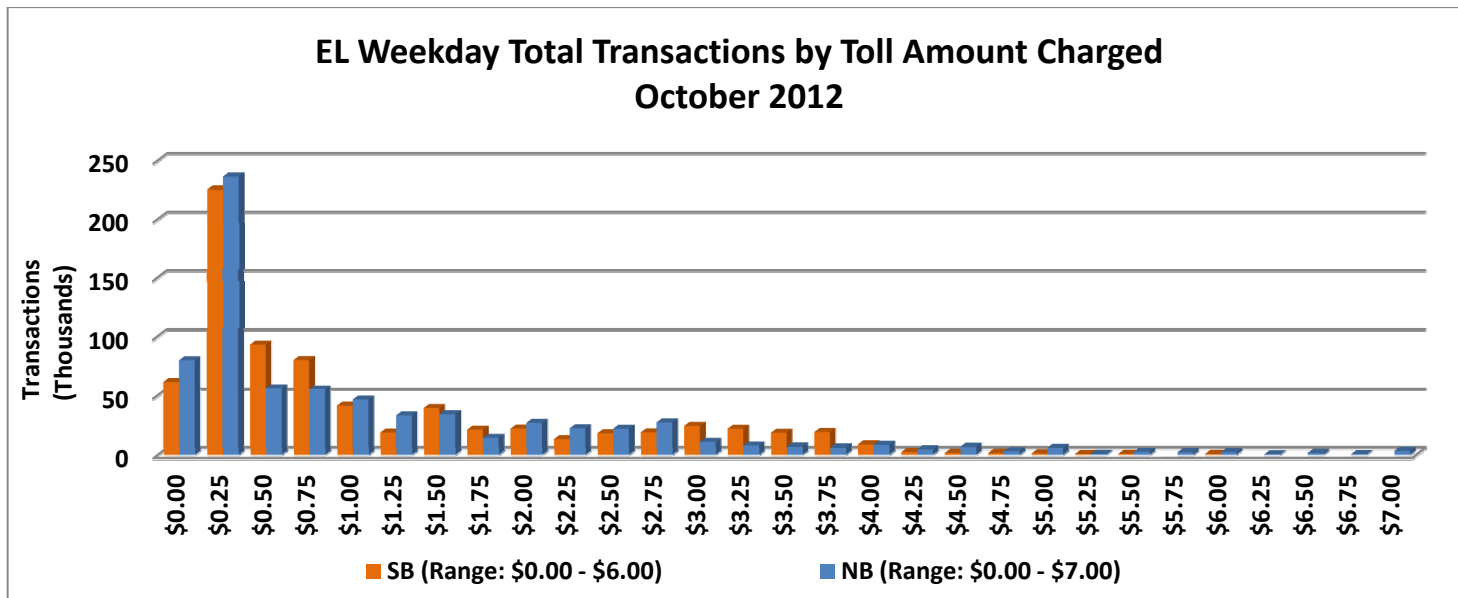


NOTE: ITD = Inception to Date



Revenue/Tolls Statistics

** Peak Period is defined as 6-9 AM (southbound) and 4-7 PM (northbound).

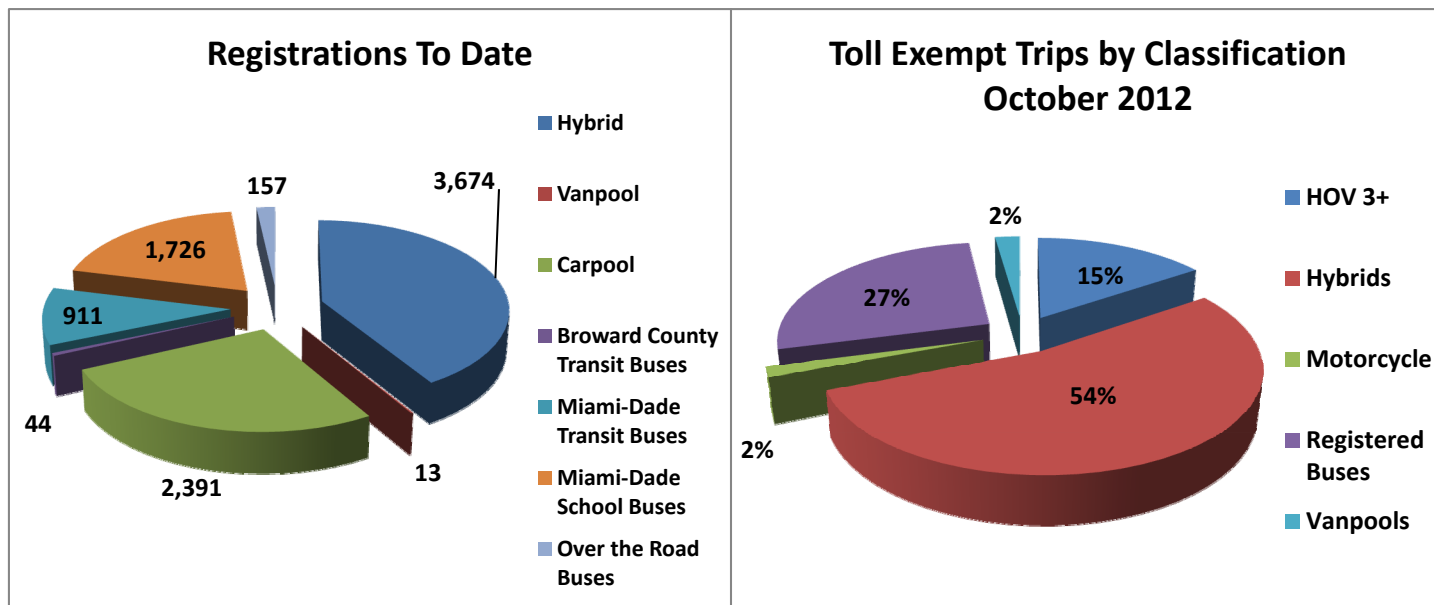


NOTE: ITD = Inception to Date

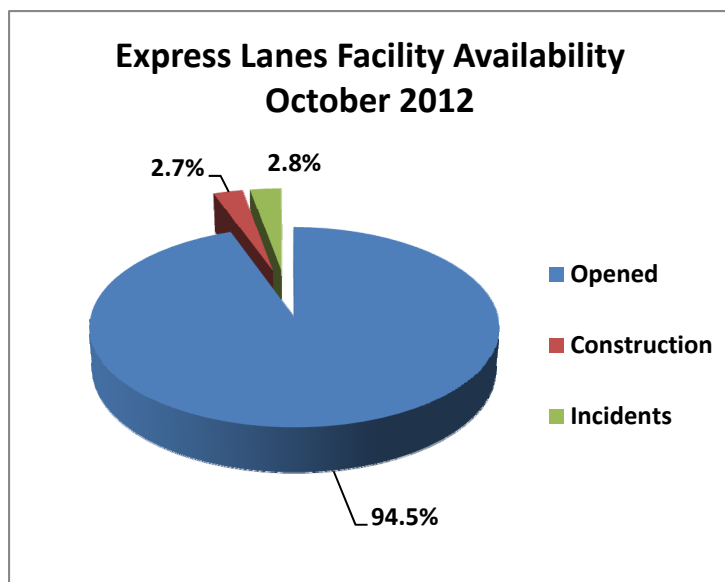


Registrations—Toll Exempt Trips

The total registrations through October 2012 increased to 8,916. The 40,286 Toll Exempt Trips for this month are shown by classification below.



Facility Availability



The entire 95 Express lanes (both directions) were open to motorists 94.5% of the time, while closed 2.7% due to 10 planned construction/maintenance events (each lasting just under 4 hours in duration, on average) and 2.8% due to 145 non-recurring events (each lasting approximately 17.5 minutes in duration, on average).