



Summary of Monthly Operations – August 2013

General

In total, the 95 Express Lanes:

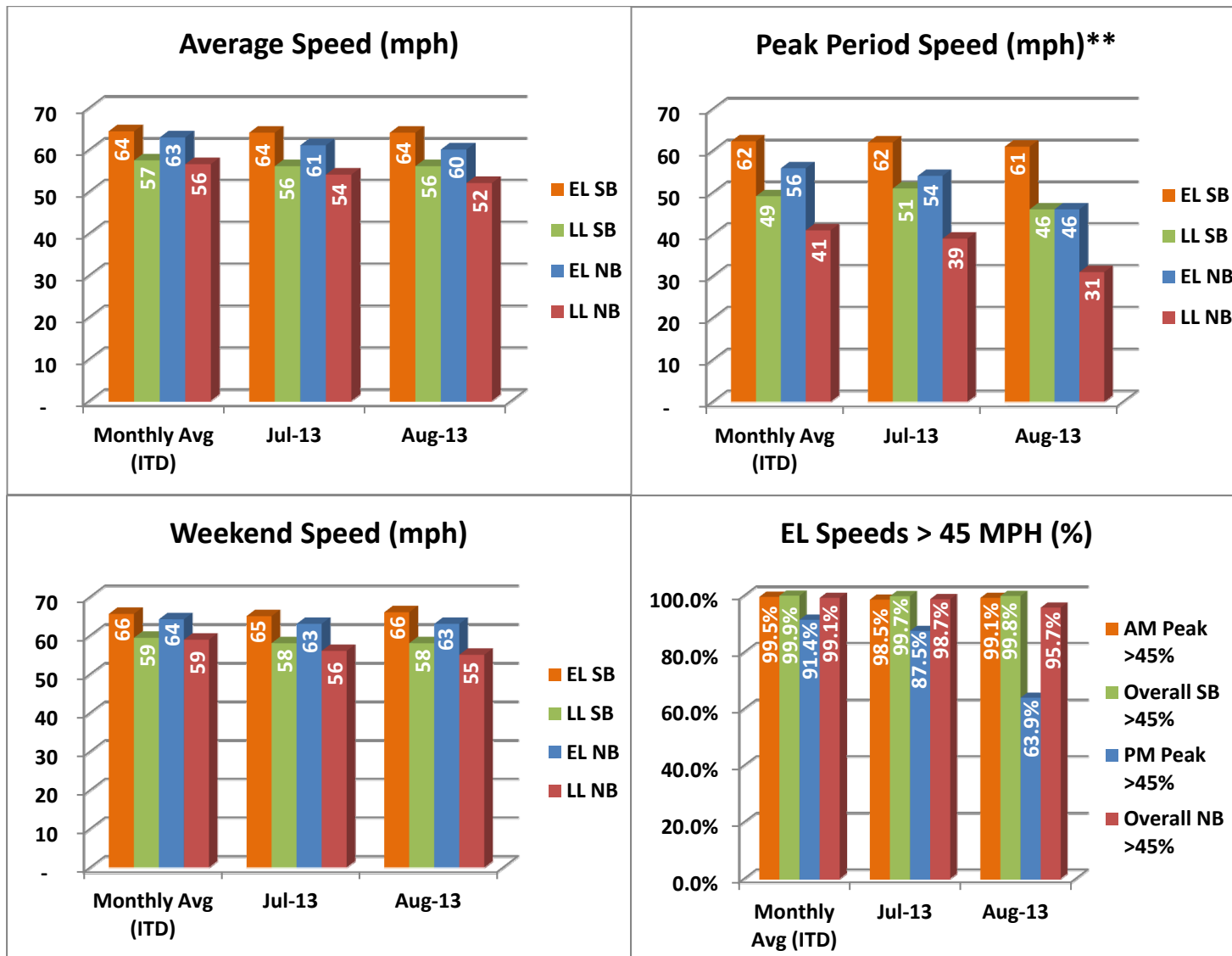
- ✓ Serviced 1,834,653 vehicle trips in August 2013 (14.8 million trips for year 2013 to date), bringing the total since opening (December 5, 2008) to approximately 80.9 million trips.
- ✓ Had estimated monthly toll revenue of \$1.50 million in August 2013 (\$13.6 million for year 2013 to date), bringing the total revenue to date to approximately \$64.9 million.
- ✓ Decreased to a total of 8,971 registered vehicles, resulting in 41,613 toll exempt trips.

<u>August 2013 Statistics</u>	<u>Southbound</u>			<u>Northbound</u>		
Total Trips	939,772			894,881		
Exempt Trips	21,675			19,938		
Revenue						
	\$706,569			\$789,971		
Tolls						
- Range	\$0.00 - \$7.00			\$0.00 - \$7.00		
- Avg. Weekday	\$1.05			\$1.27		
- Avg. Peak Period**	\$1.88			\$2.97		
- Avg. Weekend	\$0.25			\$0.23		
- Avg. Off Peak	\$0.76			\$0.66		
- 85 th Percentile Weekday	\$2.25			\$2.75		
Volume (veh)						
	EL	LL		EL	LL	
- Avg. Weekday	33,737	109,337		32,062	101,012	
- Avg. Peak Period**	8,573	18,793		8,520	17,347	
Speed (mph)						
	EL	LL	Δ	EL	LL	Δ
- Avg. Overall	64	56	8	60	52	8
- Avg. Peak Period**	61	46	15	46	31	15
Operated Above 45 MPH						
	99.8%			95.7%		
Remained Open to Motorists						
	93.2%			85.7%		
Closed due to Planned Construction						
	2.8%			8.9%		
Closed due to Non-recurring Events						
	4.0%			4.8%		
<i>EL (Express Lanes); LL (Local Lanes)</i>						
<i>**Peak Period is defined as 6-9 AM (southbound) and 4-7 PM (northbound).</i>						



Operations/Traffic Statistics - Speed Data

** Peak Period is defined as 6-9 AM (southbound) and 4-7 PM (northbound).

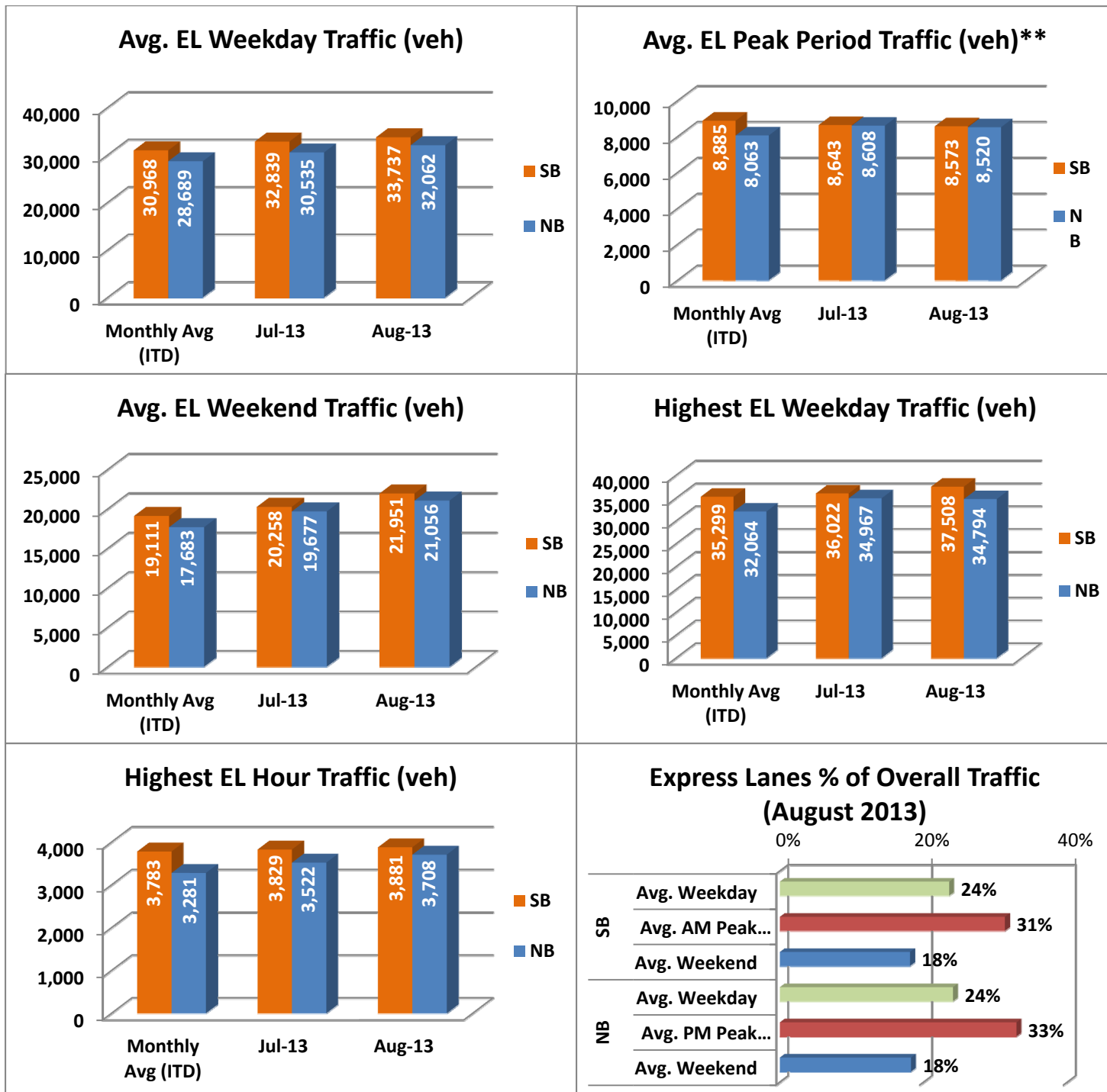


NOTE: ITD = Inception to Date



Operations/Traffic Statistics - Volume Data

** Peak Period is defined as 6-9 AM (southbound) and 4-7 PM (northbound).

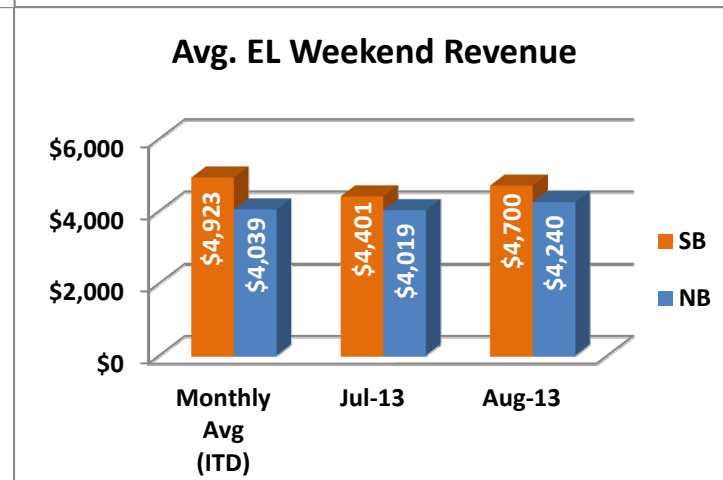
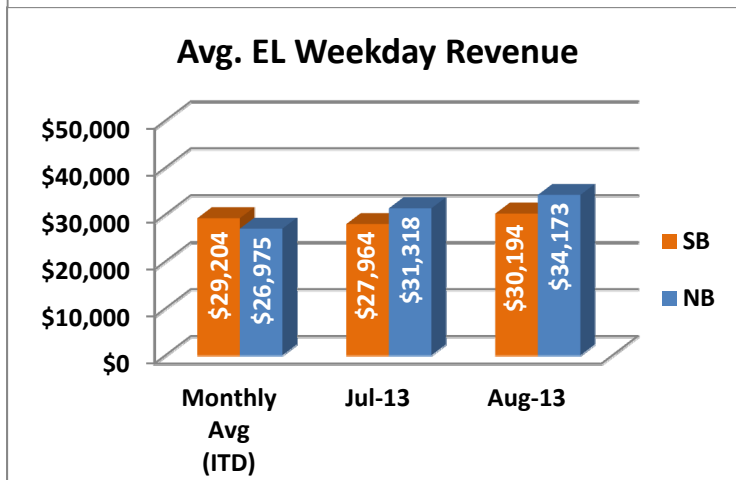
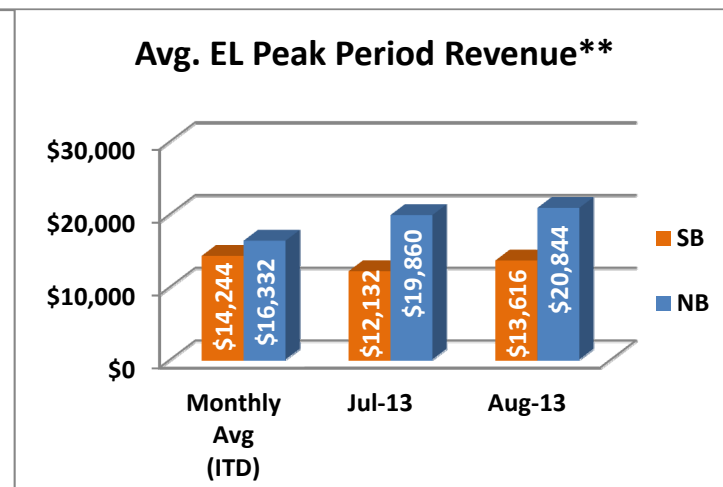
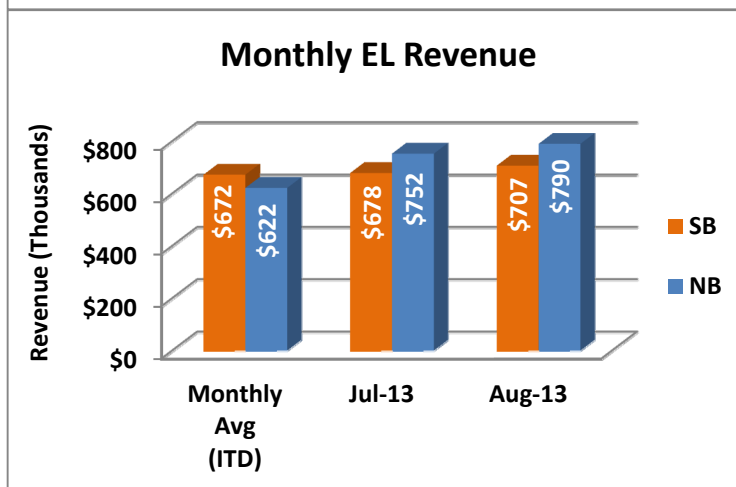
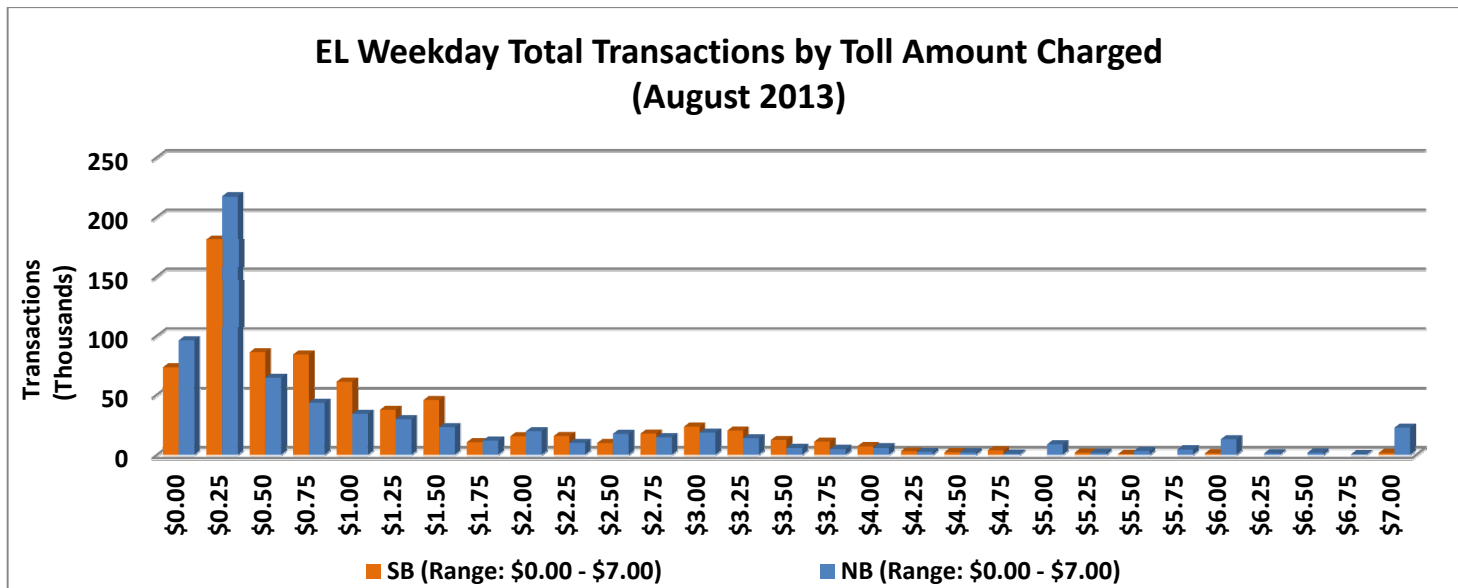


NOTE: ITD = Inception to Date



Revenue/Tolls Statistics

** Peak Period is defined as 6-9 AM (southbound) and 4-7 PM (northbound).

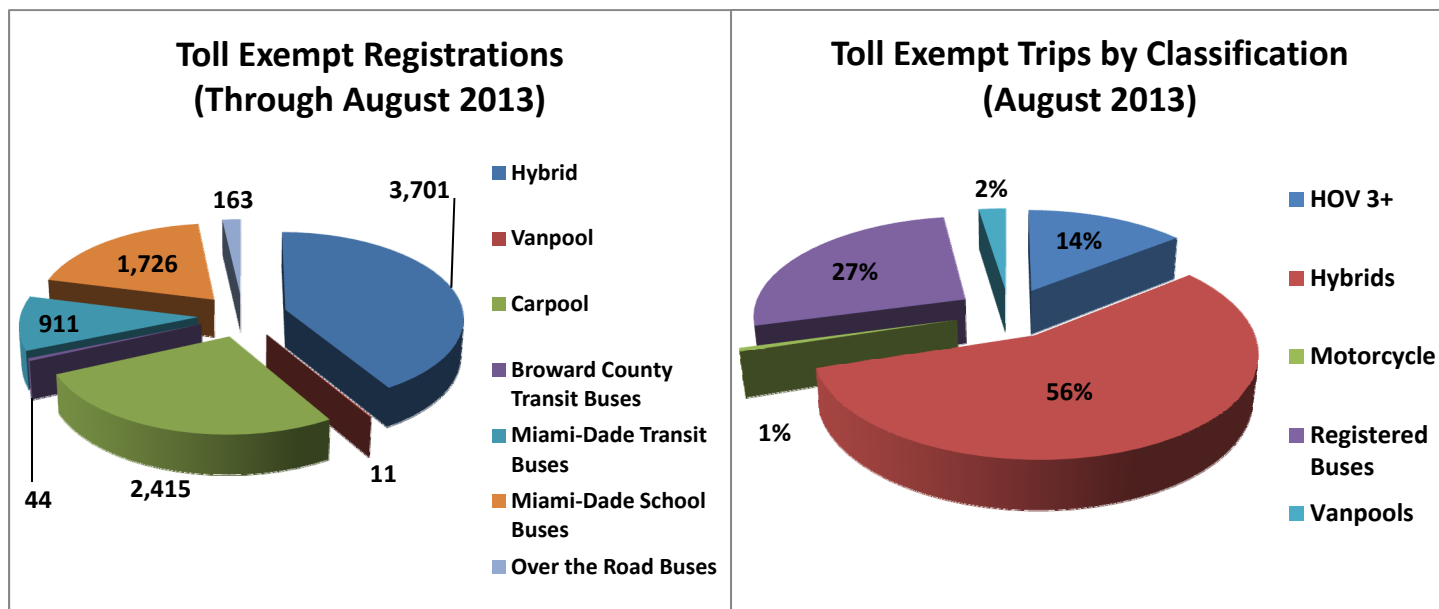


NOTE: ITD = Inception to Date

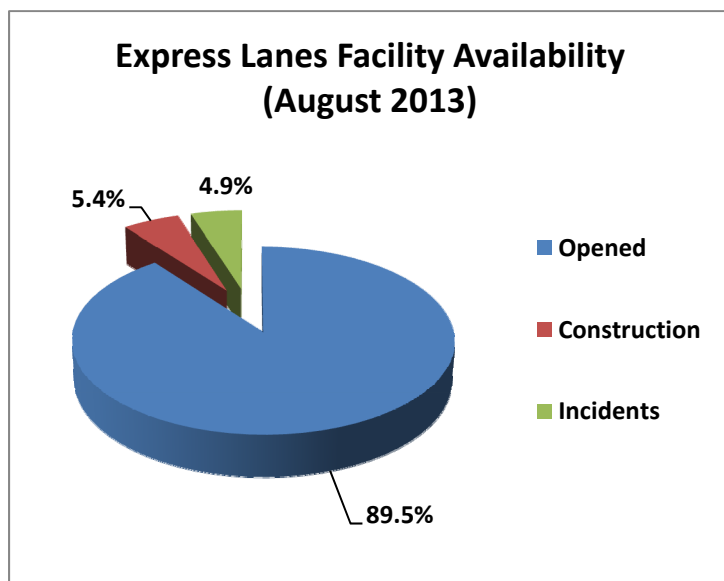


Registrations—Toll Exempt Trips

The total registrations through August 2013 decreased to 8,971. The 41,613 Toll Exempt Trips for this month are shown by classification below.



Facility Availability



The entire 95 Express lanes (both directions) were open to motorists 89.5% of the time, while closed 5.4% due to 16 planned construction/maintenance events (each lasting approximately 5 hours, 25 minutes in duration, on average) and 4.9% due to 193 non-recurring events (each lasting approximately 20.3 minutes in duration, on average).