



## Summary of Monthly Operations – September 2013

### General

In total, the 95 Express Lanes:

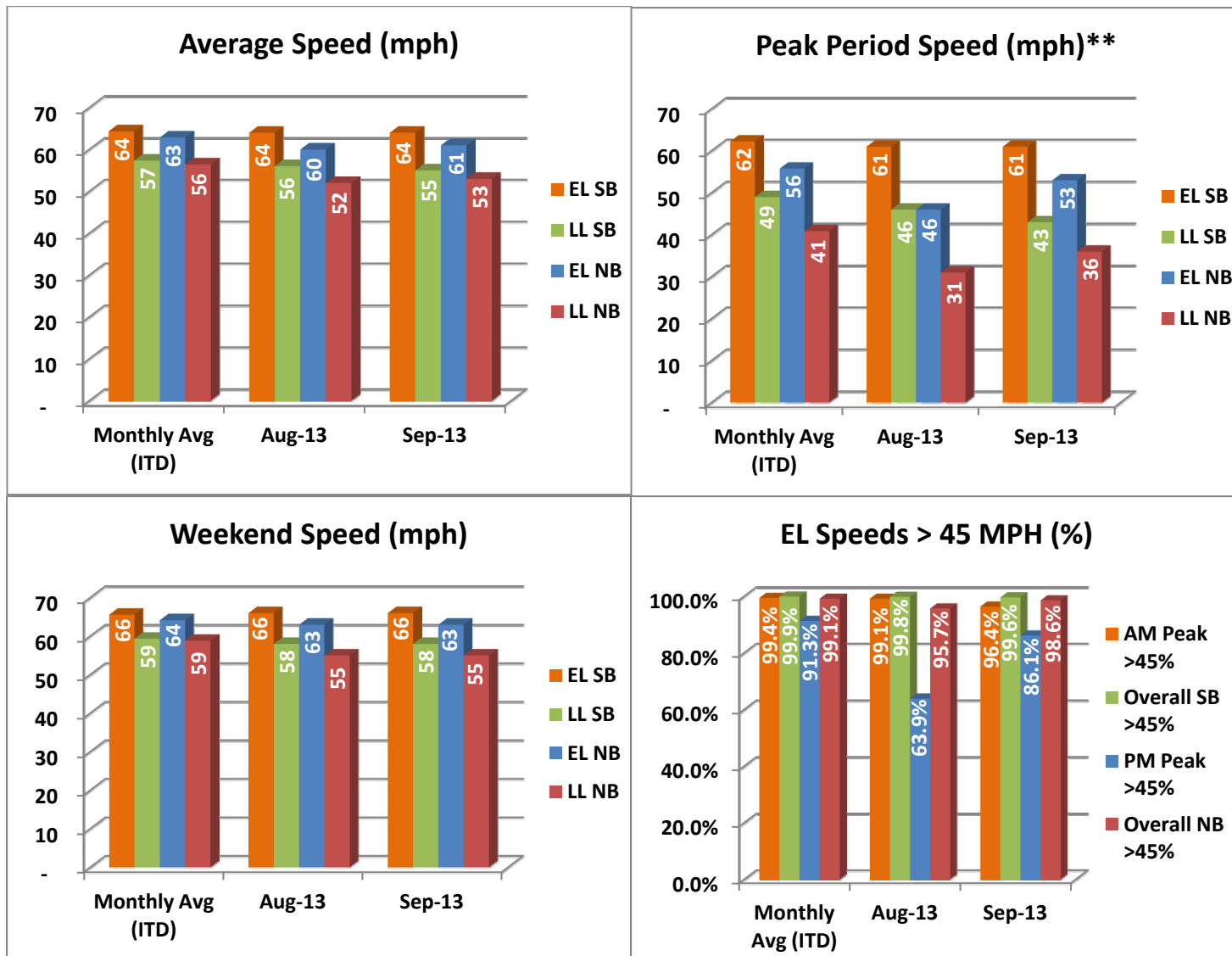
- ✓ Serviced 1,722,467 vehicle trips in September 2013 (16.5 million trips for year 2013 to date), bringing the total since opening (December 5, 2008) to approximately 82.6 million trips.
- ✓ Had estimated monthly toll revenue of \$1.43 million in September 2013 (\$14.7 million for year 2013 to date), bringing the total revenue to date to approximately \$66.3 million.
- ✓ Increased to a total of 8,978 registered vehicles, resulting in 44,609 toll exempt trips.

<u>September 2013 Statistics</u>	<u>Southbound</u>		<u>Northbound</u>			
<b>Total Trips</b>	884,470		837,997			
<b>Exempt Trips</b>	22,853		21,756			
<b>Revenue</b>						
	\$698,564		\$731,388			
<b>Tolls</b>						
- Range	\$0.00 - \$7.00		\$0.00 - \$7.00			
- Avg. Weekday	\$1.10		\$1.24			
- Avg. Peak Period**	\$2.07		\$2.91			
- Avg. Weekend	\$0.26		\$0.25			
- Avg. Off Peak	\$0.72		\$0.62			
- 85 <sup>th</sup> Percentile Weekday	\$2.50		\$2.50			
<b>Volume (veh)</b>						
	<b>EL</b>	<b>LL</b>	<b>EL</b>	<b>LL</b>		
- Avg. Weekday	33,291	100,304	31,327	99,168		
- Avg. Peak Period**	9,387	17,248	8,500	17,869		
<b>Speed (mph)</b>						
	<b>EL</b>	<b>LL</b>	<b>Δ</b>	<b>EL</b>	<b>LL</b>	<b>Δ</b>
- Avg. Overall	64	55	9	61	53	8
- Avg. Peak Period**	61	43	18	53	36	17
<b>Operated Above 45 MPH</b>						
	99.6%		98.6%			
<b>Remained Open to Motorists</b>						
	93.2%		90.1%			
<b>Closed due to Planned Construction</b>						
	3.6%		7.1%			
<b>Closed due to Non-recurring Events</b>						
	3.2%		2.8%			
<i>EL (Express Lanes); LL (Local Lanes)</i>						
<i>**Peak Period is defined as 6-9 AM (southbound) and 4-7 PM (northbound).</i>						



## Operations/Traffic Statistics - Speed Data

\*\* Peak Period is defined as 6-9 AM (southbound) and 4-7 PM (northbound).

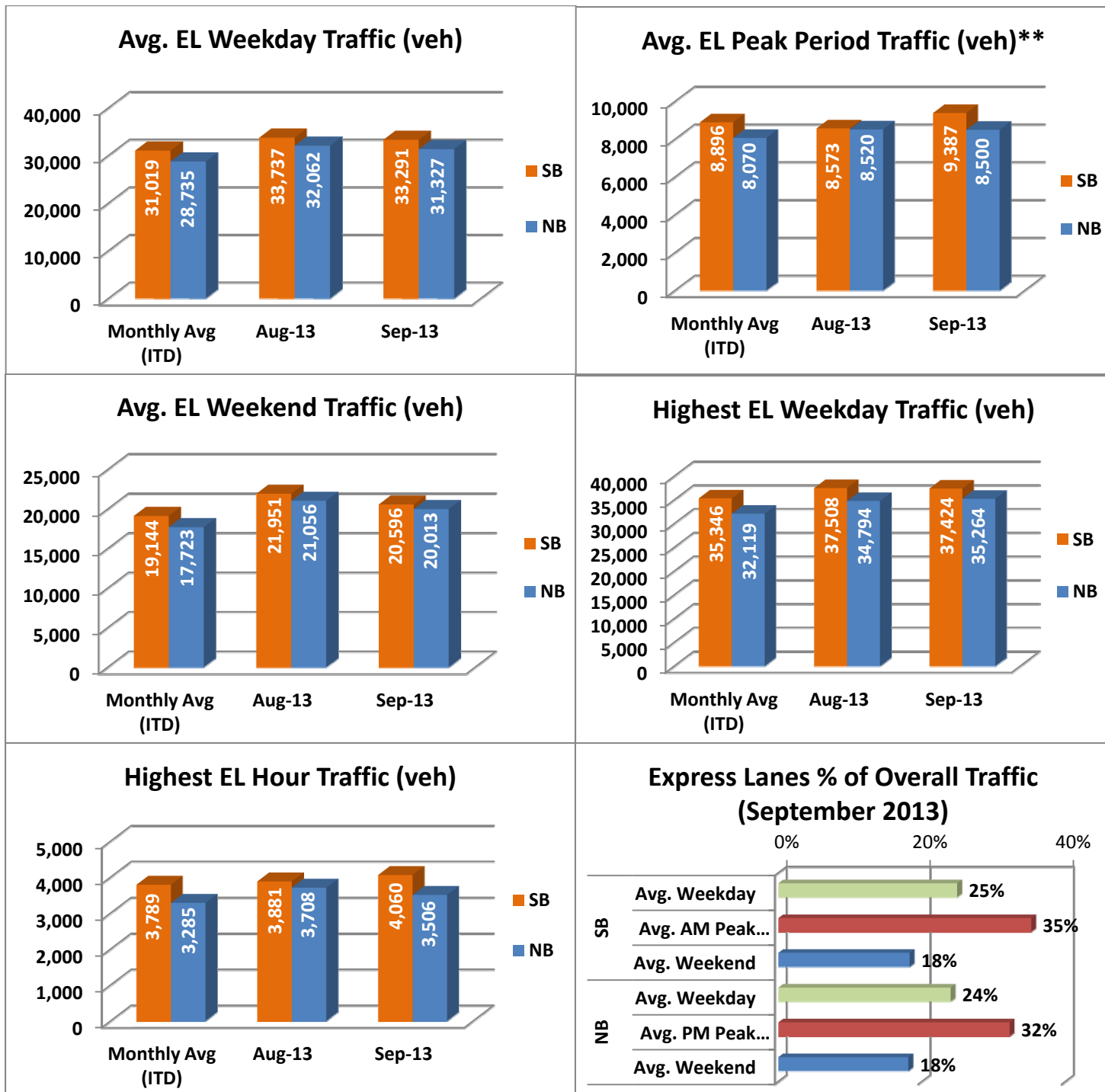


NOTE: ITD = Inception to Date



## Operations/Traffic Statistics - Volume Data

\*\* Peak Period is defined as 6-9 AM (southbound) and 4-7 PM (northbound).

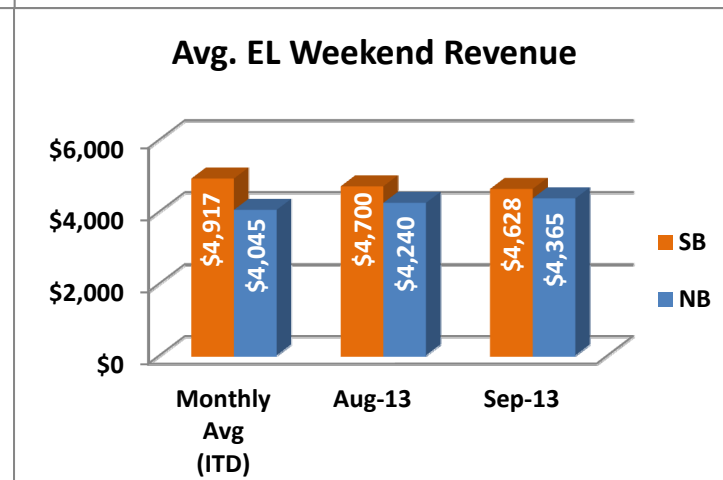
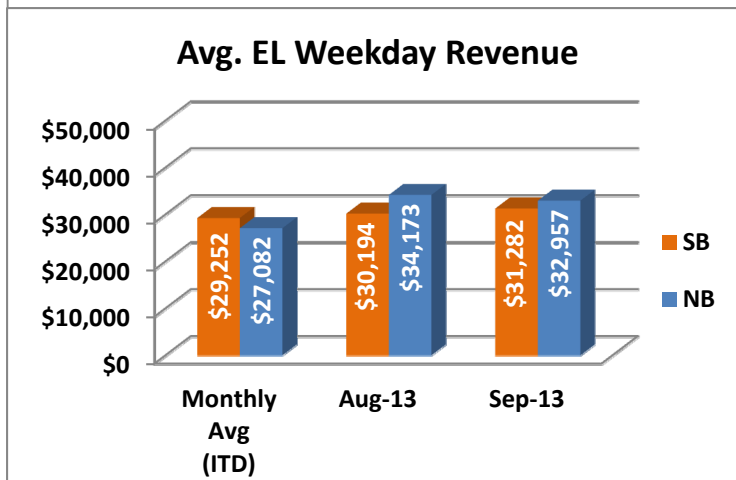
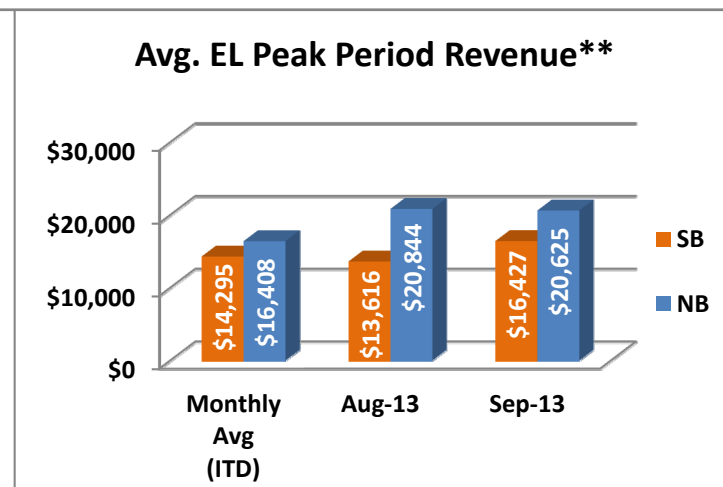
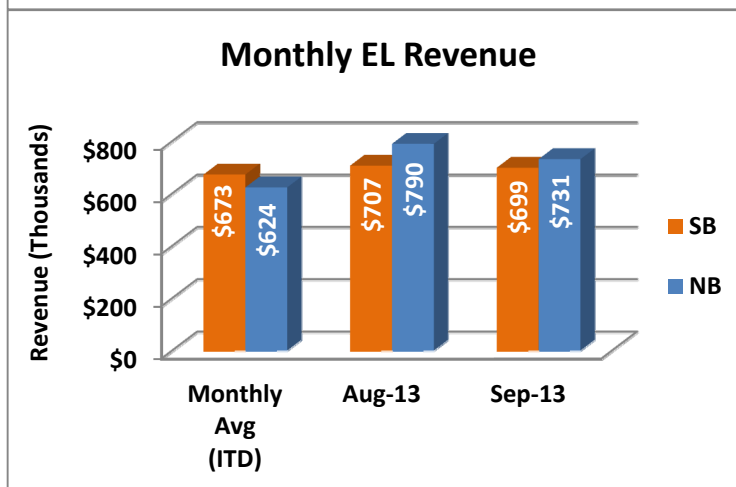
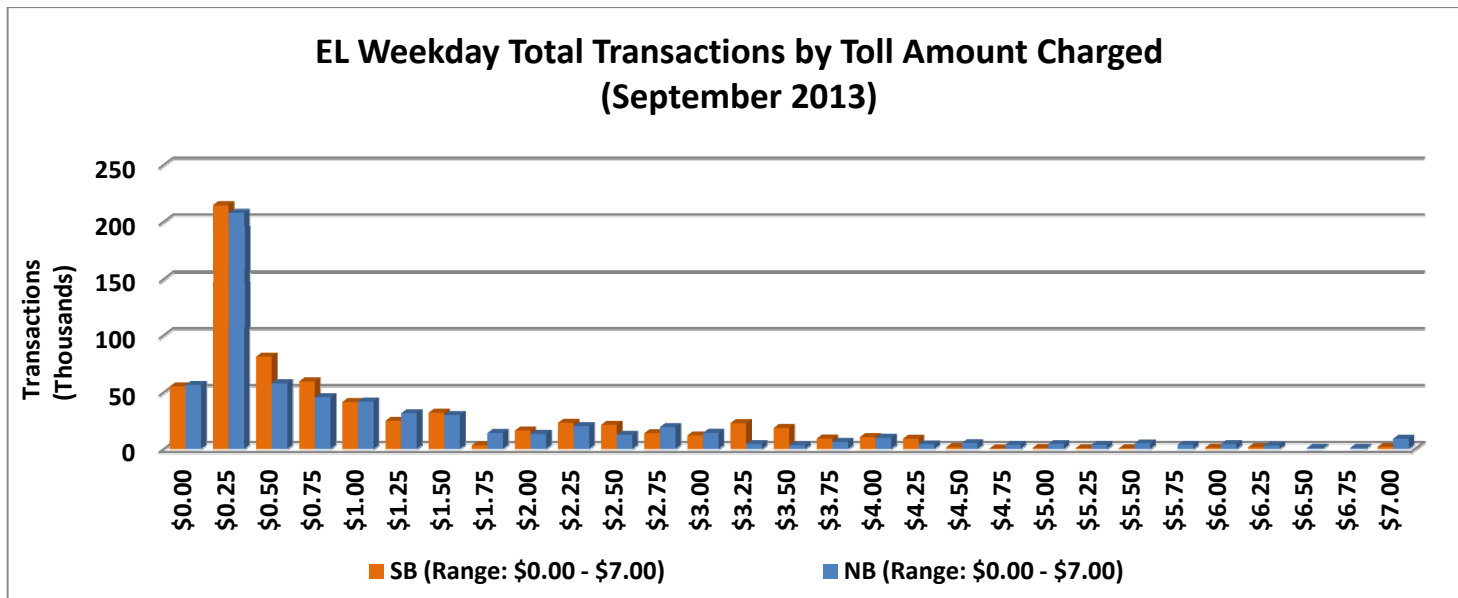


NOTE: ITD = Inception to Date



## Revenue/Tolls Statistics

\*\* Peak Period is defined as 6-9 AM (southbound) and 4-7 PM (northbound).

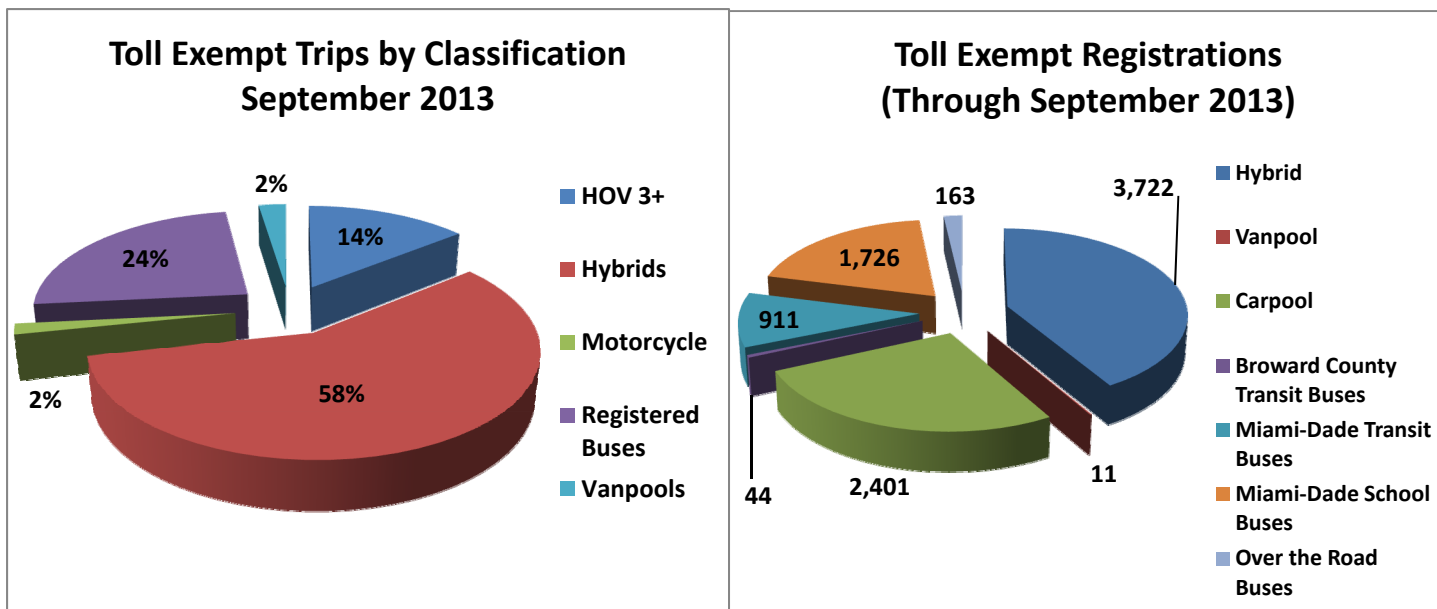


NOTE: ITD = Inception to Date

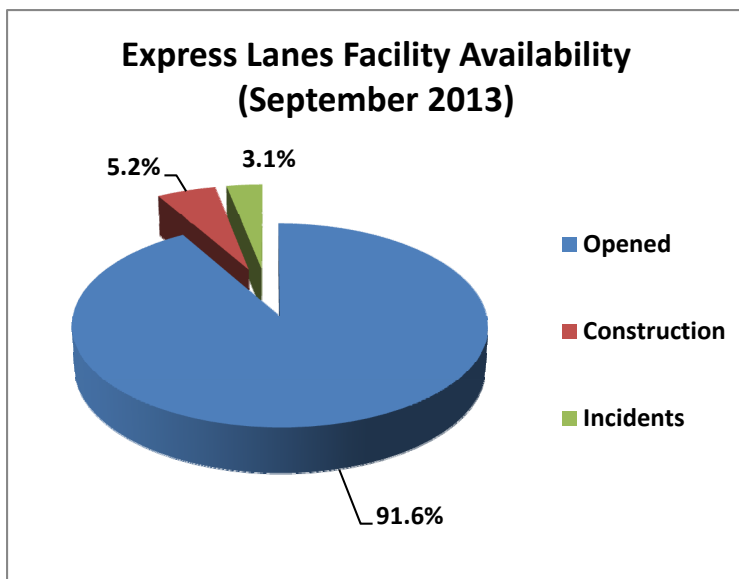


## Registrations—Toll Exempt Trips

The total registrations through September 2013 decreased to 8,978. The 44,609 Toll Exempt Trips for this month are shown by classification below.



## Facility Availability



The entire 95 Express lanes (both directions) were open to motorists 91.6% of the time, while closed 5.2% due to 17 planned construction/ maintenance events (each lasting approximately 4 hours, 33 minutes in duration, on average) and 3.1% due to 152 non-recurring events (each lasting approximately 17.0 minutes in duration, on average).