

95 Express Monthly Operations Report – September 2015

General

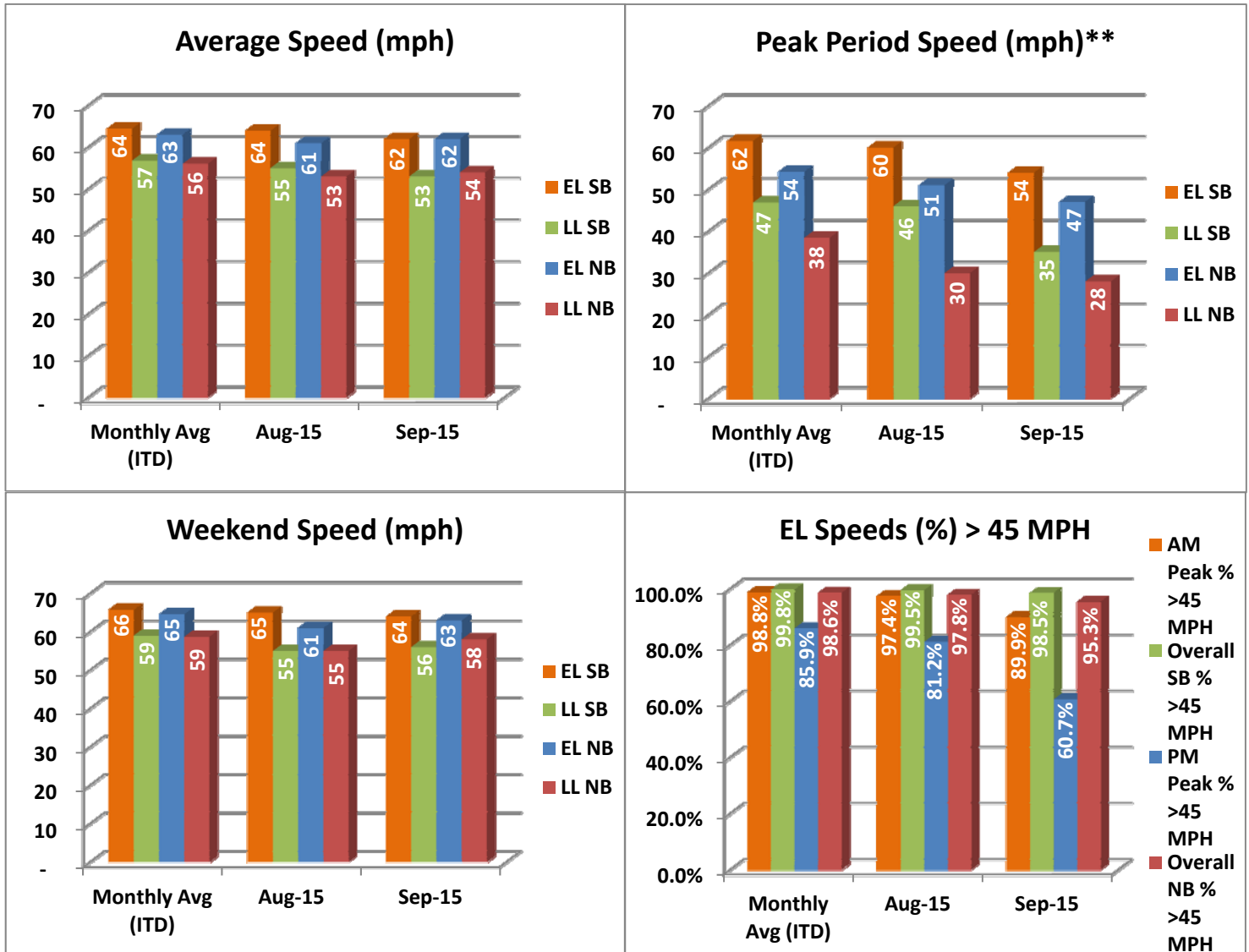
In total, the 95 Express Lanes:

- ✓ Serviced 1,680,335 vehicle trips in September 2015 (16.3 million trips in 2015), bringing the total since opening (December 5, 2008) to approximately 125.4 million trips.
- ✓ Had estimated monthly toll revenue of \$2.61 million in September 2015 (\$21.9 million in 2015), bringing the total revenue to date to approximately \$116.0 million.
- ✓ Decreased to a total of 9,344 registered vehicles, resulting in 53,605 toll exempt trips.

<u>September 2015 Statistics</u>	<u>Southbound</u>			<u>Northbound</u>		
Total Trips	870,404			809,931		
Exempt Trips	25,333			28,272		
Revenue						
	\$1,022,583			\$1,590,026		
Tolls						
- Range	\$0.00 - \$10.50			\$0.00 - \$10.50		
- Avg. Weekday	\$1.54			\$2.65		
- Avg. Peak Period**	\$2.48			\$6.82		
- Avg. Weekend	\$0.56			\$0.52		
- Avg. Off Peak	\$1.30			\$1.45		
- 85 th Percentile Weekday	\$3.00			\$7.75		
Volume (veh)						
	EL	LL		EL	LL	
- Avg. Weekday	32,118	99,801		30,080	93,578	
- Avg. Peak Period**	8,478	16,179		7,278	15,858	
Speed (mph)						
	EL	LL	Δ	EL	LL	Δ
- Avg. Overall	62	53	9	62	54	8
- Avg. Peak Period**	54	35	19	47	28	19
Operated Above 45 MPH						
	98.5%			95.3%		
Remained Open to Motorists						
	76.8%			75.8%		
Closed due to Planned Construction						
	17.8%			18.7%		
Closed due to Non-recurring Events						
	5.5%			5.5%		
<i>EL (Express Lanes); LL (Local Lanes); **Peak Period is defined as 6-9 AM (southbound) and 4-7 PM (northbound).</i>						

Operations/Traffic Statistics - Speed Data

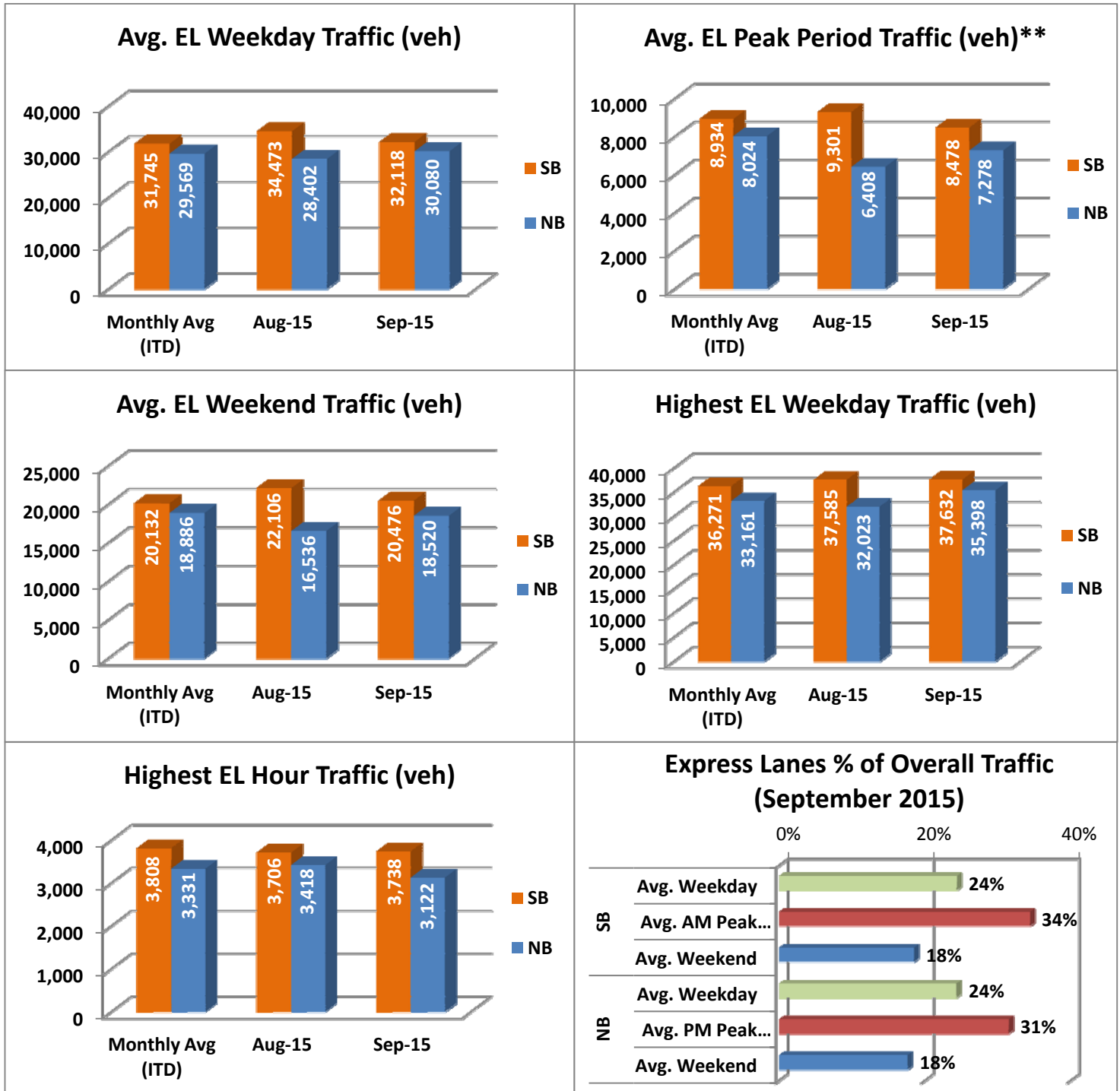
** Peak Period is defined as 6-9 AM (southbound) and 4-7 PM (northbound).



NOTE: ITD = Inception to Date; EL = Express Lanes; LL = Local Lanes

Operations/Traffic Statistics - Volume Data

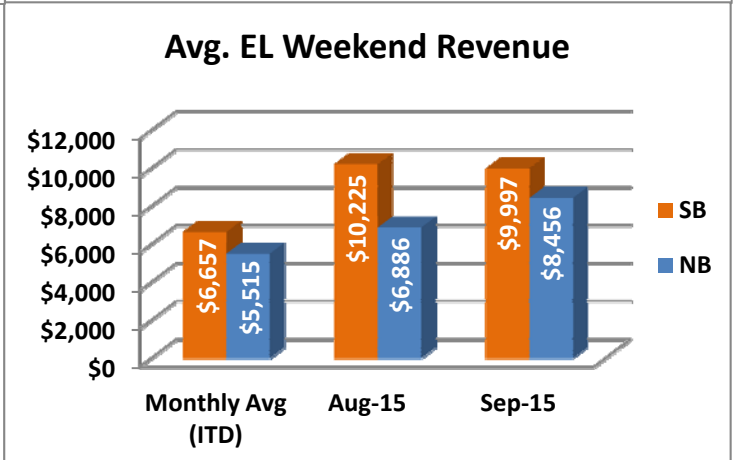
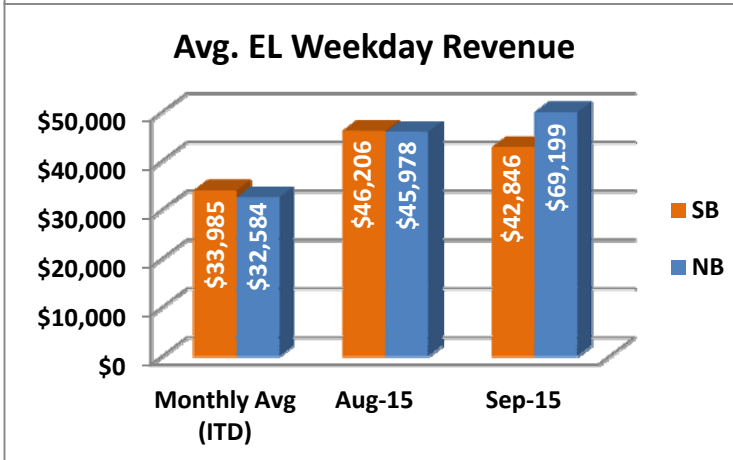
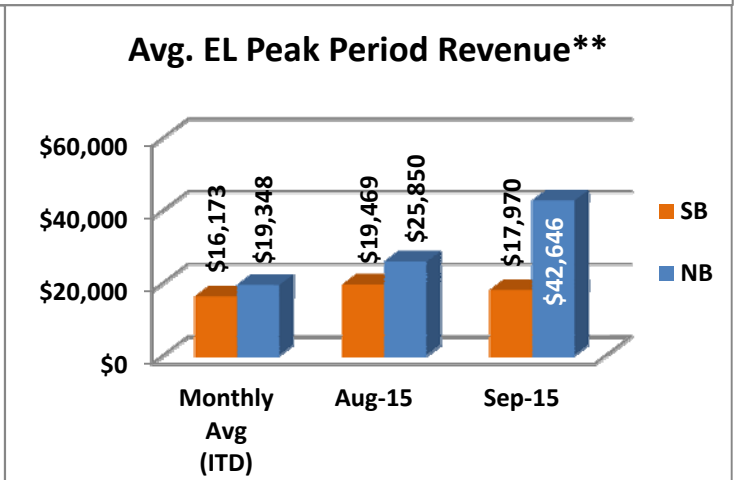
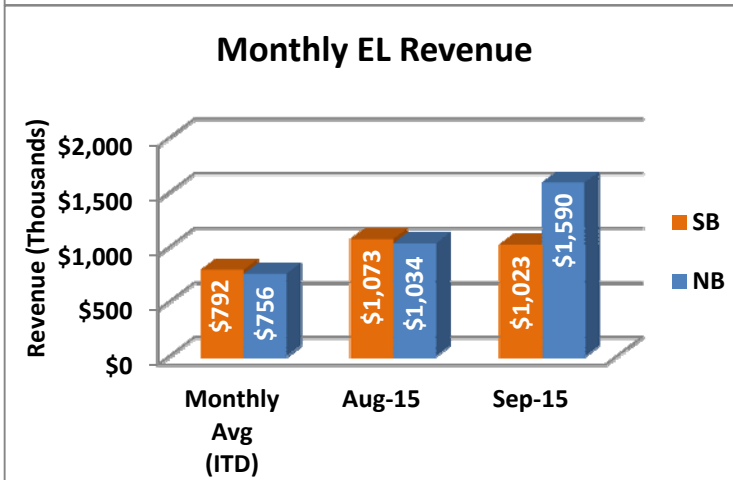
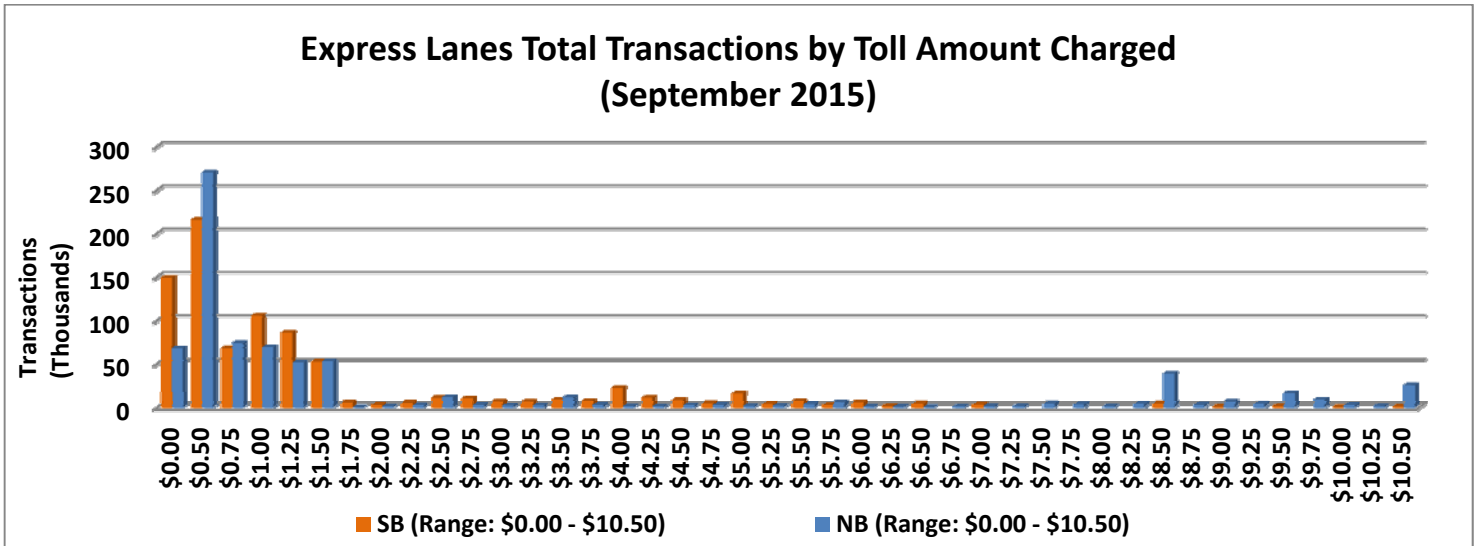
** Peak Period is defined as 6-9 AM (southbound) and 4-7 PM (northbound).



NOTE: ITD = Inception to Date

Revenue/Tolls Statistics

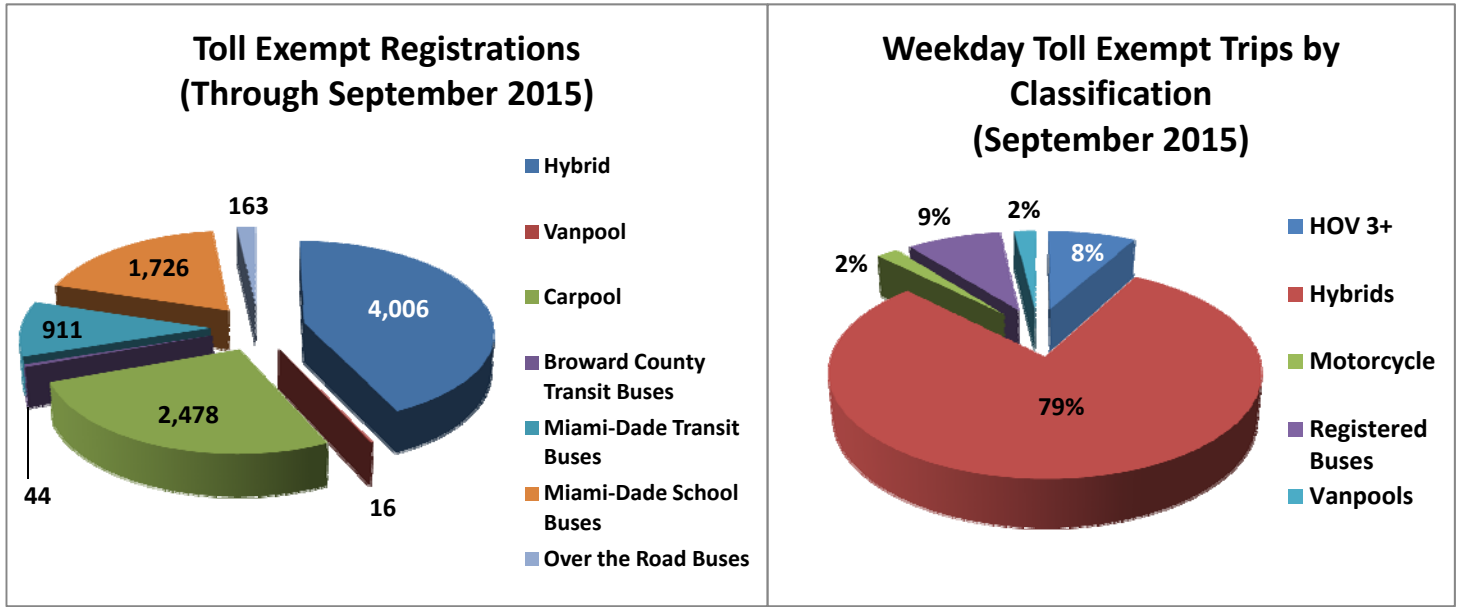
** Peak Period is defined as 6-9 AM (southbound) and 4-7 PM (northbound).



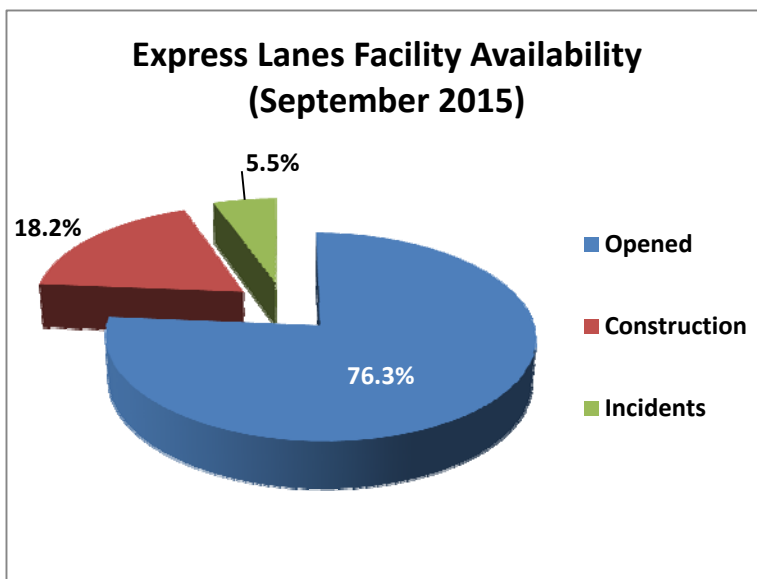
NOTE: ITD = Inception to Date

Registrations—Toll Exempt Trips

The total registrations through September 2015 decreased to 9,344. The Weekday Toll Exempt Trips for this month are shown by classification below.



Facility Availability



The entire 95 Express lanes (both directions) were open to motorists 76.3% of the time, while closed 18.2% due to 39 planned construction/ maintenance events (each lasting approximately 6 hours, 44 minutes in duration, on average) and 5.5% due to 194 non-recurring events (each lasting approximately 24.3 minutes in duration, on average).