

95 Express Monthly Operations Report – April 2014

General

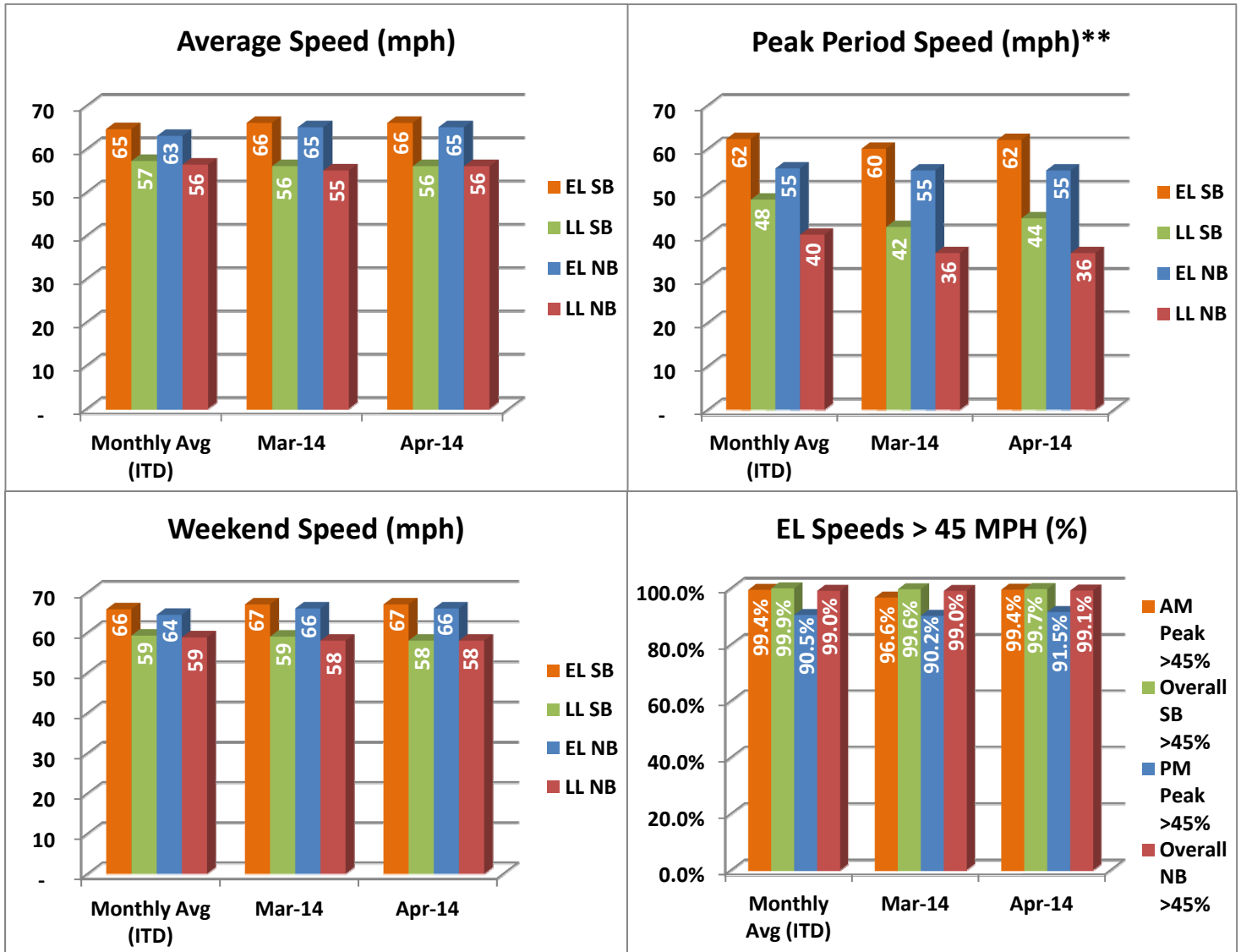
In total, the 95 Express Lanes:

- ✓ Serviced 1,798,586 vehicle trips in April 2014 (7.60M trips in 2014 to date), bringing the total since opening (April 5, 2008) to approximately 95.9 million trips.
- ✓ Had estimated monthly toll revenue of \$2.10 million in April 2014 (\$7.92M in 2014 to date), bringing the total revenue to date to approximately \$79.1 million.
- ✓ Decreased to a total of 9,098 registered vehicles, resulting in 55,595 toll exempt trips.

<u>April 2014 Statistics</u>	<u>Southbound</u>		<u>Northbound</u>			
Total Trips	931,033		867,553			
Exempt Trips	28,429		27,166			
Revenue						
	\$1,106,407		\$991,152			
Tolls						
- Range***	\$0.00 - \$9.50		\$0.00 - \$10.50			
- Avg. Weekday	\$1.53		\$1.44			
- Avg. Peak Period**	\$2.46		\$3.12			
- Avg. Weekend	\$0.53		\$0.52			
- Avg. Off Peak	\$1.23		\$0.87			
- 85 th Percentile Weekday	\$3.25		\$2.75			
Volume (veh)						
	EL	LL	EL	LL		
- Avg. Weekday	33,260	105,630	31,679	103,214		
- Avg. Peak Period**	9,182	18,134	8,364	17,840		
Speed (mph)						
	EL	LL	Δ	EL	LL	Δ
- Avg. Overall	66	56	10	65	56	9
- Avg. Peak Period**	62	44	18	55	36	19
Operated Above 45 MPH						
	99.7%		99.1%			
Remained Open to Motorists						
	86.8%		86.1%			
Closed due to Planned Construction						
	10.1%		9.8%			
Closed due to Non-recurring Events						
	3.1%		4.1%			
<i>EL (Express Lanes); LL (Local Lanes)</i> <i>**Peak Period is defined as 6-9 AM (southbound) and 4-7 PM (northbound).</i> <i>***Maximum Toll Increase started in March 2014; from \$1.00 per mile, maximum, to \$1.50 per mile.</i>						

Operations/Traffic Statistics - Speed Data

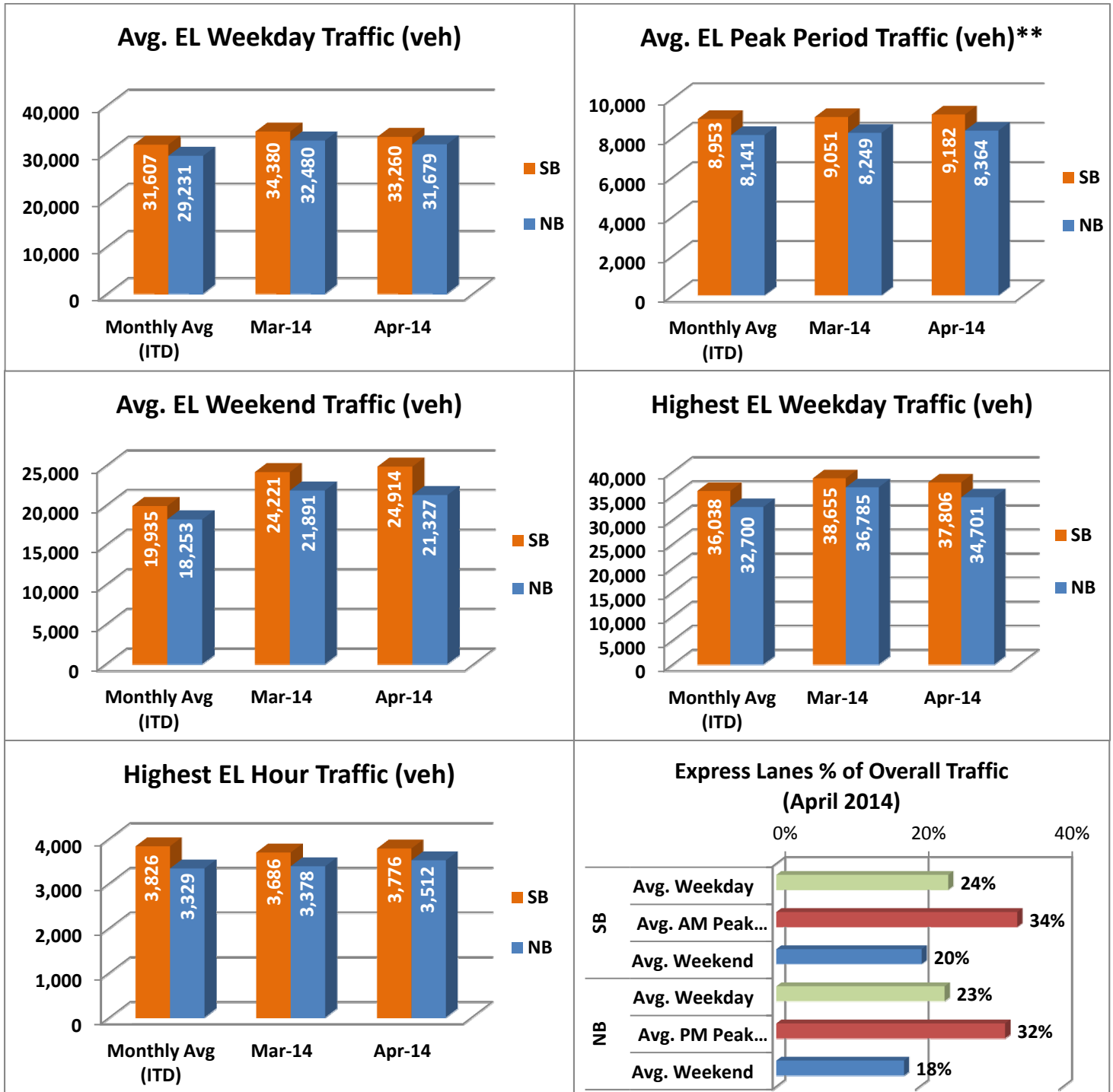
** Peak Period is defined as 6-9 AM (southbound) and 4-7 PM (northbound).



NOTE: ITD = Inception to Date

Operations/Traffic Statistics - Volume Data

** Peak Period is defined as 6-9 AM (southbound) and 4-7 PM (northbound).

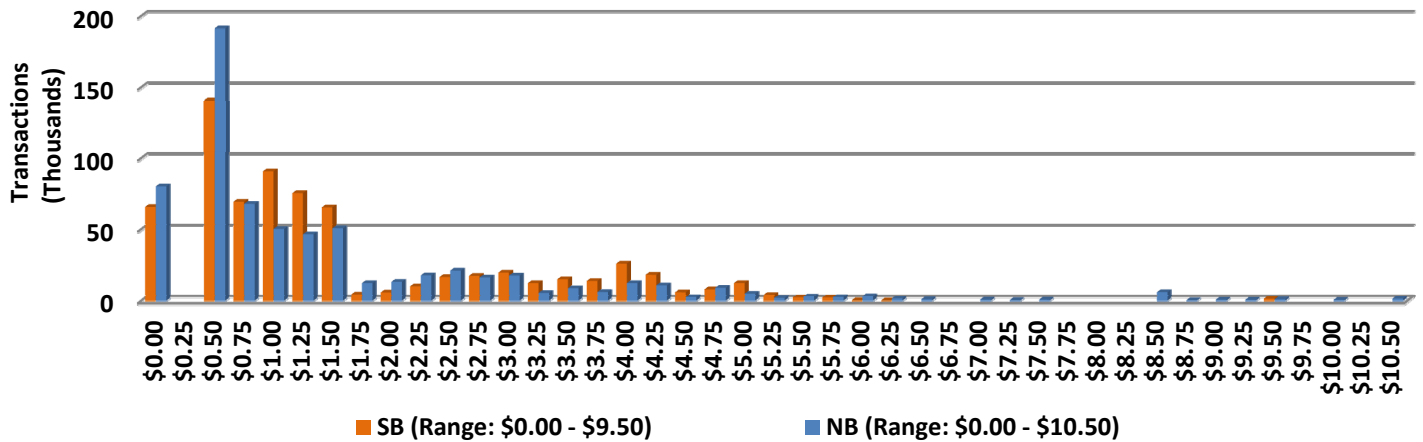


NOTE: ITD = Inception to Date

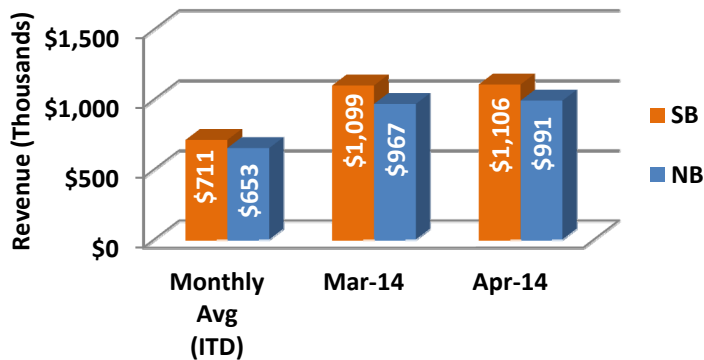
Revenue/Tolls Statistics

** Peak Period is defined as 6-9 AM (southbound) and 4-7 PM (northbound). Maximum toll increase started March 2014; from \$1.00 per mile, maximum, to \$1.50 per mile.

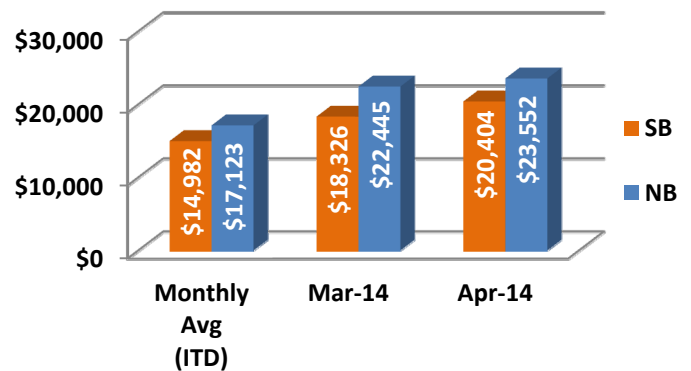
EL Weekday Total Transactions by Toll Amount Charged (April 2014)



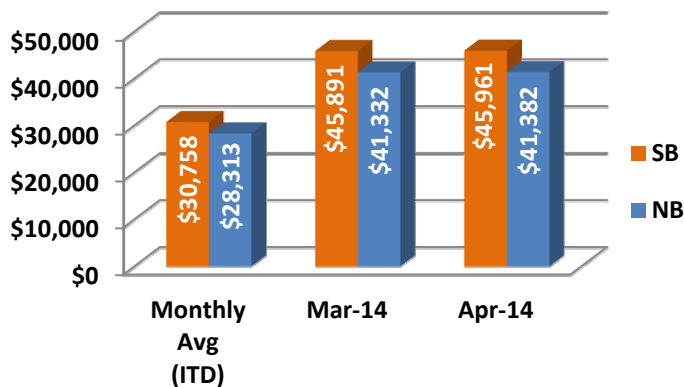
Monthly EL Revenue



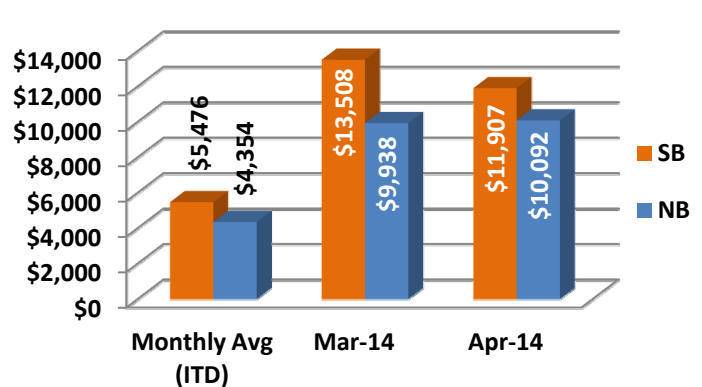
Avg. EL Peak Period Revenue**



Avg. EL Weekday Revenue



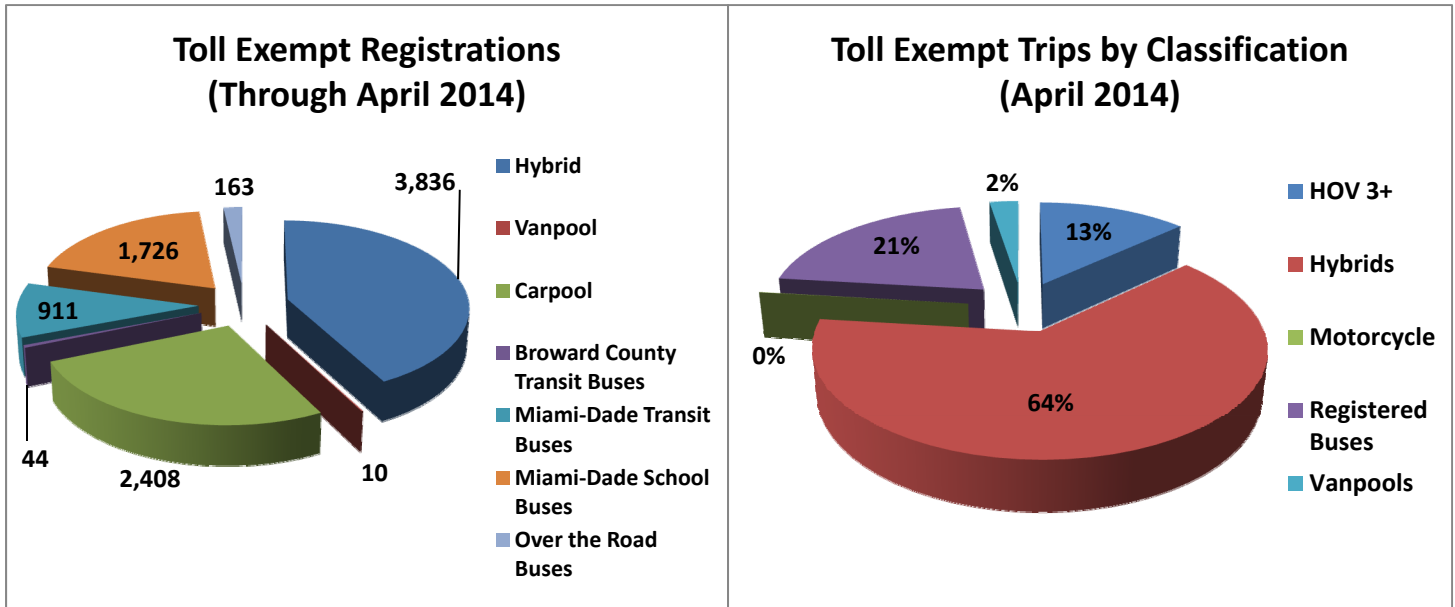
Avg. EL Weekend Revenue



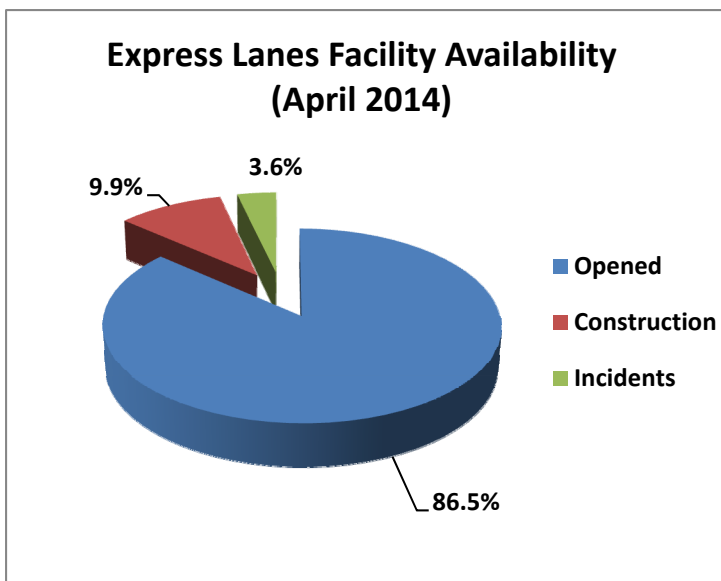
NOTE: ITD = Inception to Date

Registrations—Toll Exempt Trips

The total registrations through April 2014 decreased to 9,098. The 55,595 Toll Exempt Trips for this month are shown by classification below.



Facility Availability



The entire 95 Express lanes (both directions) were open to motorists 86.5% of the time, while closed 9.9% due to 32 planned construction/maintenance events (each lasting approximately 4 hours, 27 minutes in duration, on average) and 3.6% due to 188 non-recurring events (each lasting approximately 17 minutes in duration, on average).