



95 EXPRESS PHASE 3

Broward & Palm Beach Counties



95 Express Phase 3B-2 Public Workshop

March 14, 2018

PRESENTATION OUTLINE

- PROJECT BACKGROUND
- SUMMARY SCOPE OF PLANNED IMPROVEMENTS
- PROJECT SCHEDULE
- PUBLIC QUESTIONS FOLLOWED BY BREAK
- ADDITIONAL TECHNICAL INFORMATION
- PROCUREMENT PROCESS AND SCHEDULE
- ADDITIONAL QUESTIONS



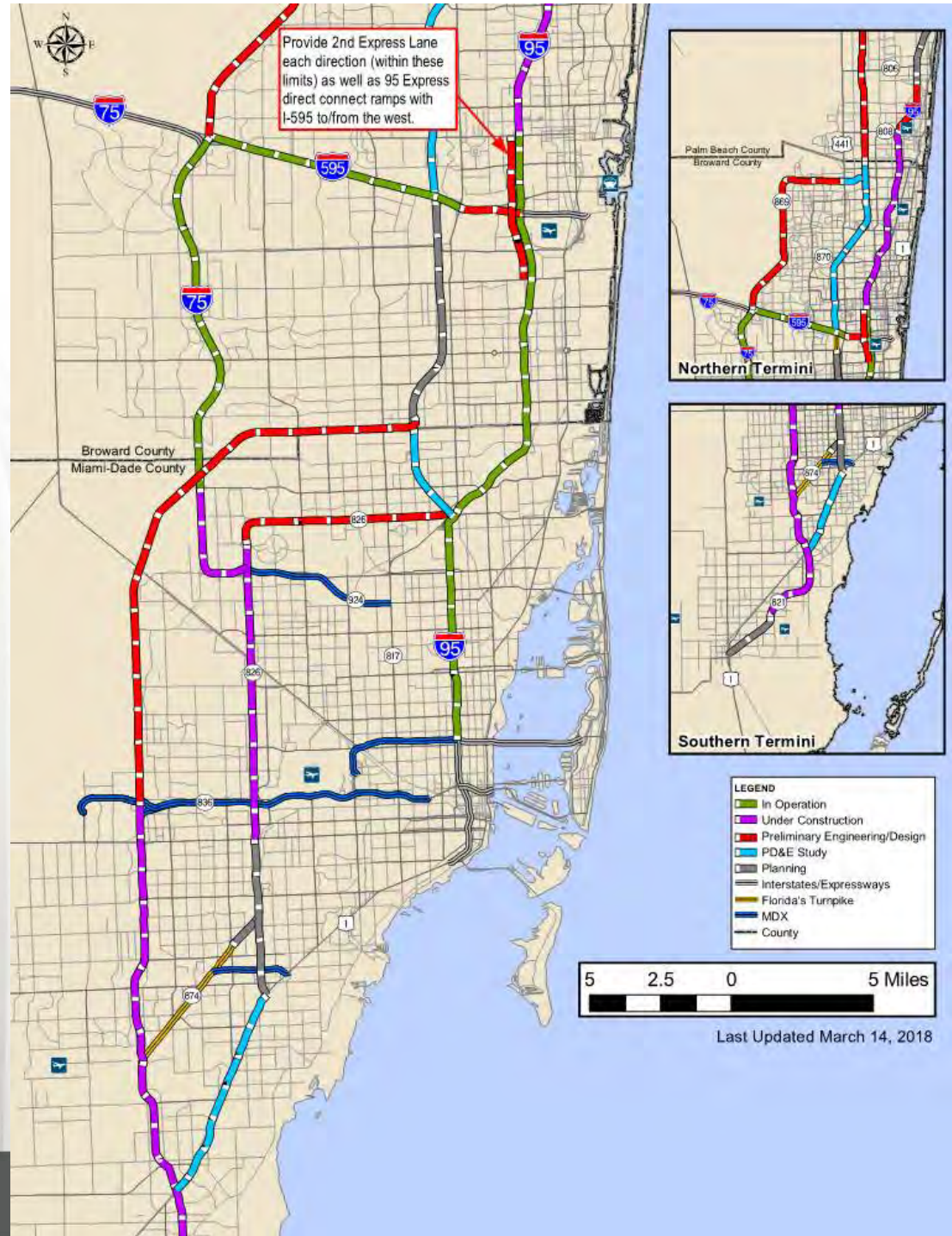
95 EXPRESS

PROJECT BACKGROUND

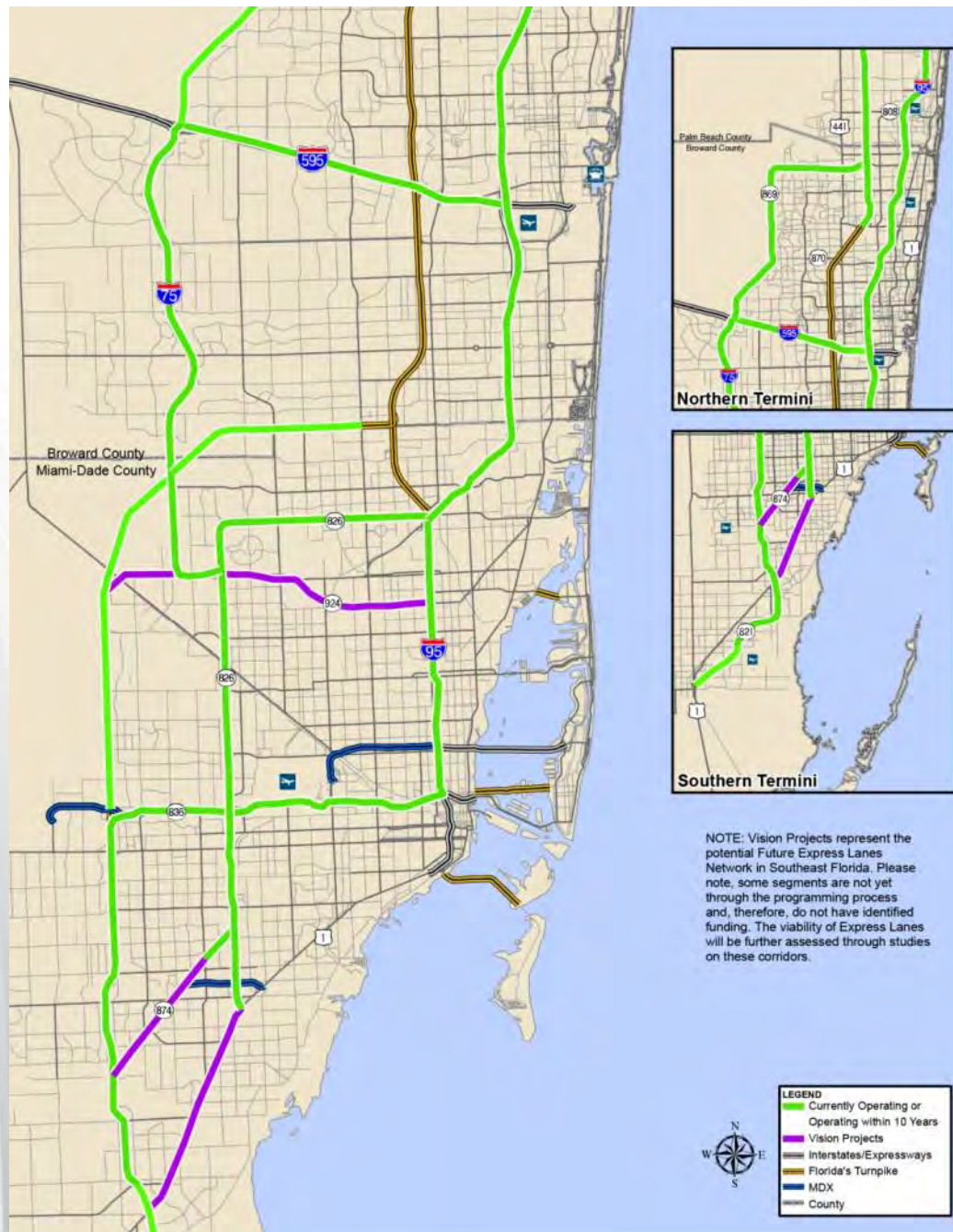
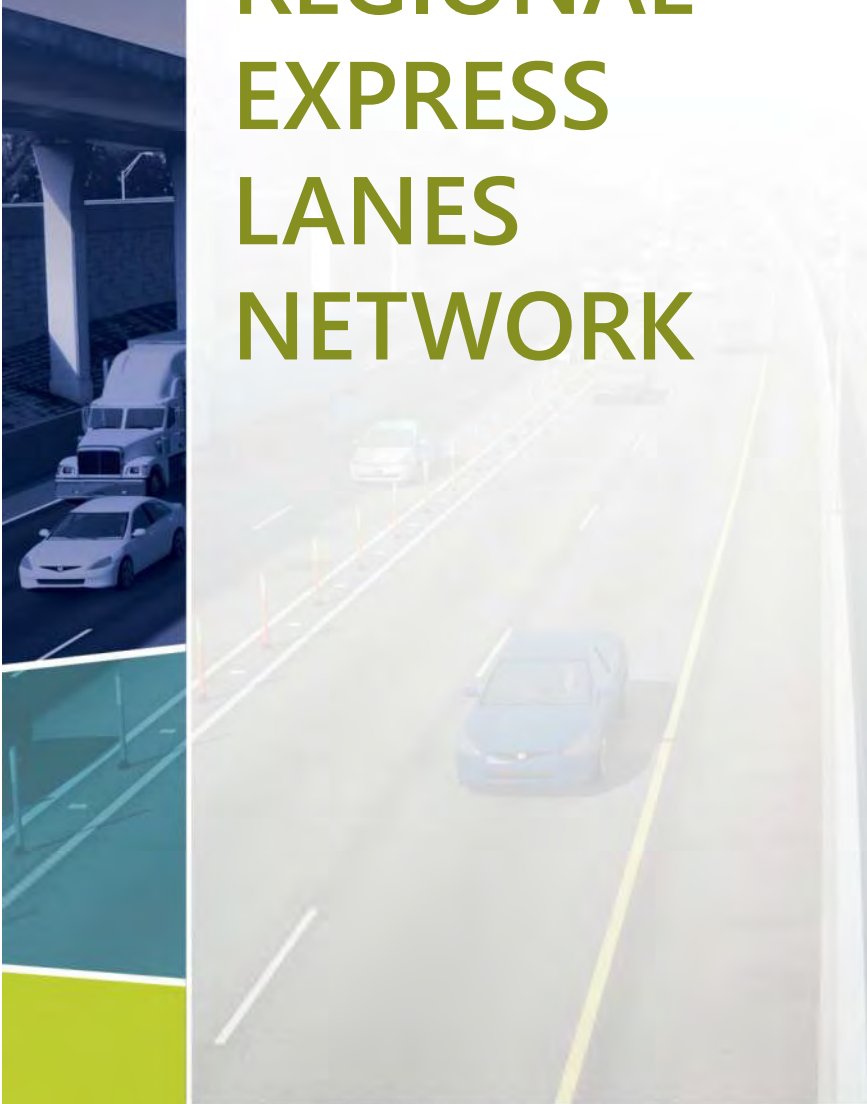
95 EXPRESS PHASE 3
Broward & Palm Beach Counties



REGIONAL EXPRESS LANES NETWORK



10-YEAR REGIONAL EXPRESS LANES NETWORK



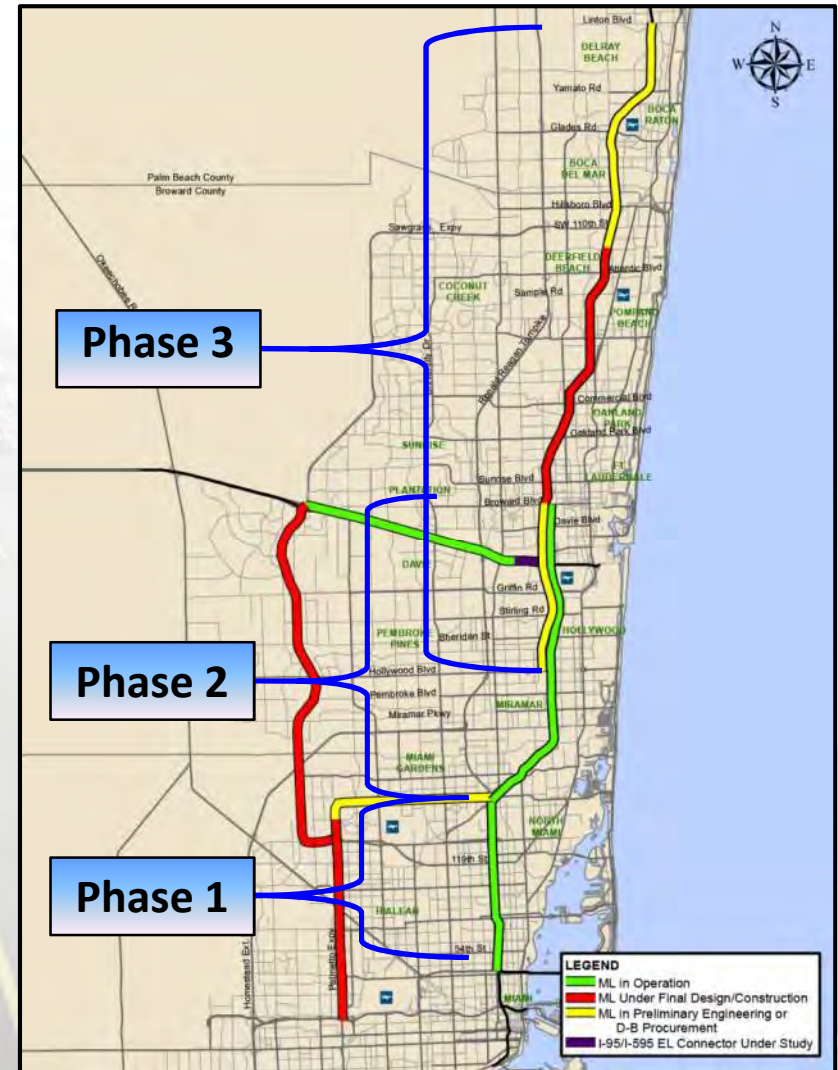
I-95 EXPRESS PROGRAM

Length

- Phase 3 - 29 Miles (From Stirling Road to Linton Blvd.)

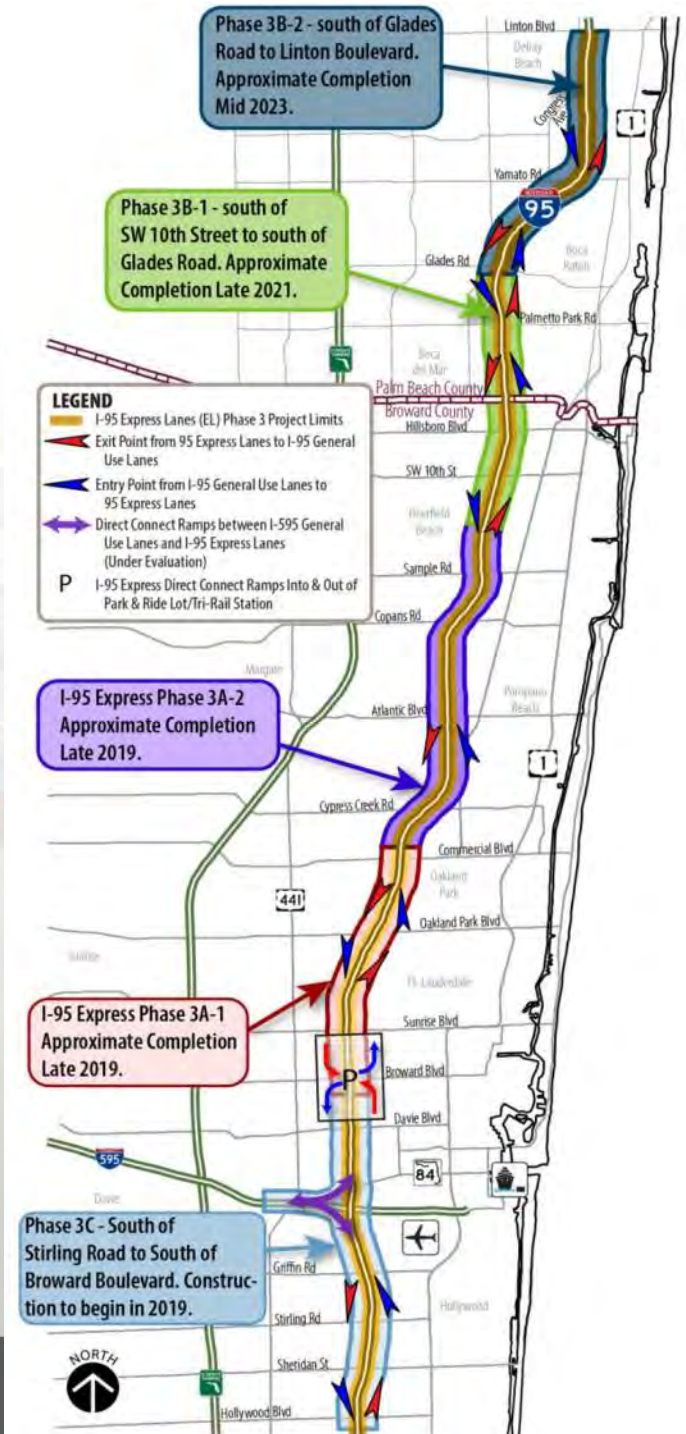
I-95 Express Corridor Status & Schedule

- Phase 1 – Open to traffic 2008
- Phase 2 – Open to traffic 2016
- Phase 3 - Segmented into multiple phases:
 - Phases A-1, A-2, B-1, B-2 and C are in various stages of completion



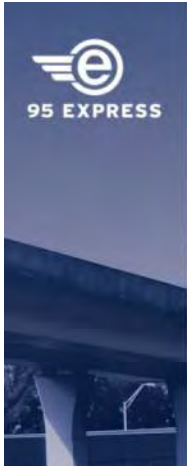
I-95 PHASE 3 – IMPLEMENTATION PLAN

- Phase 3A-1, 3A-2 and 3B-1 under construction (South of Broward Blvd. to South of Glades Rd.)
- Phase 3C – South of Stirling Road to South of Broward Blvd.
 - Begin Final Design Mid 2018
 - Begin Construction Mid 2019
- Phase 3B-2 – South of Glades Rd. to Linton Blvd.
 - Begin Final Design Mid 2019
 - Begin Construction 2020

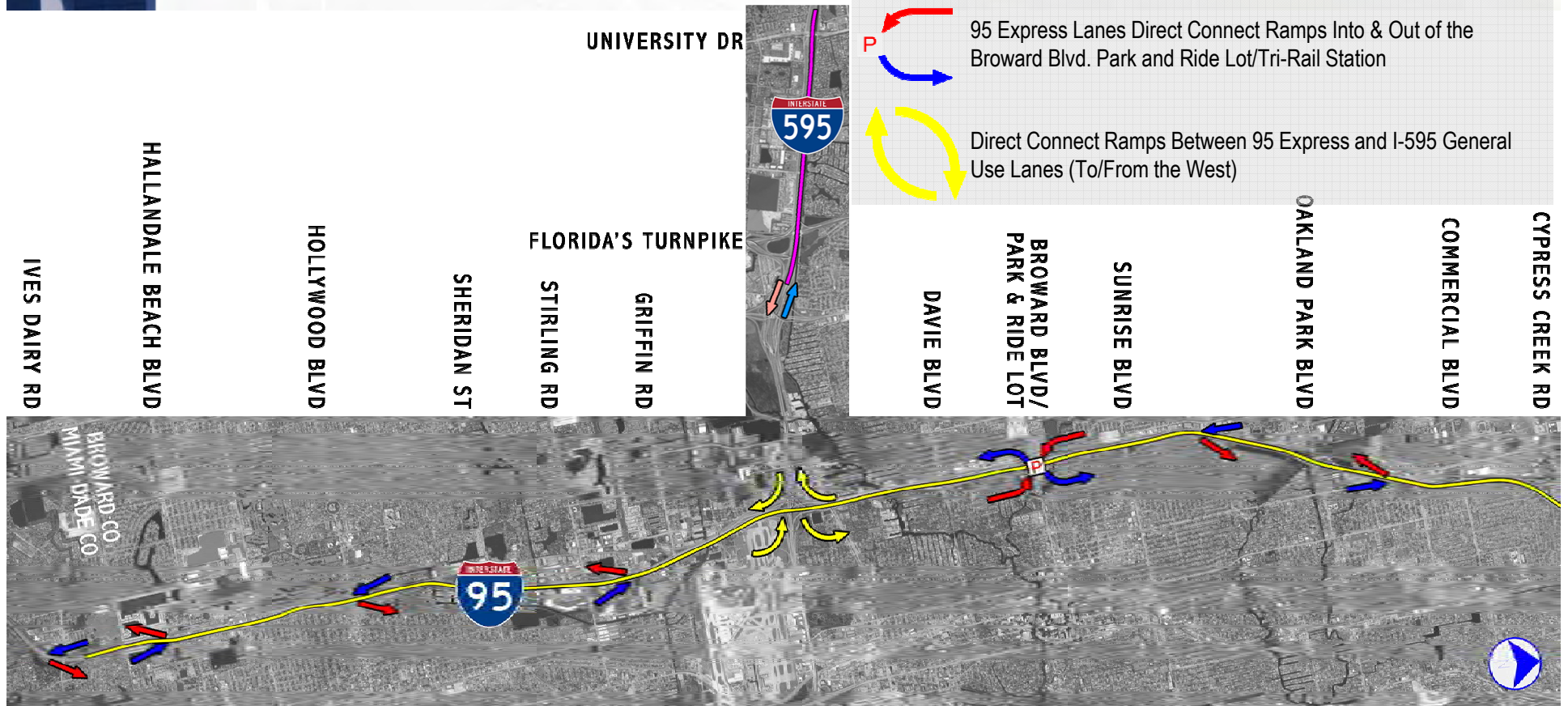


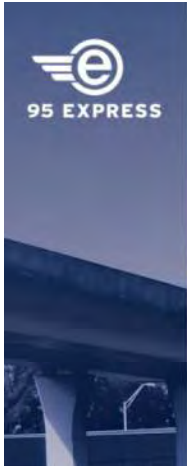
GOALS OF EXPRESS LANES

- Purpose of express lanes is to provide an alternative to congestion, and to serve long-distance trips
- Provide additional system capacity/throughput
- By-pass local service interchanges, minimizing mainline weave conflicts

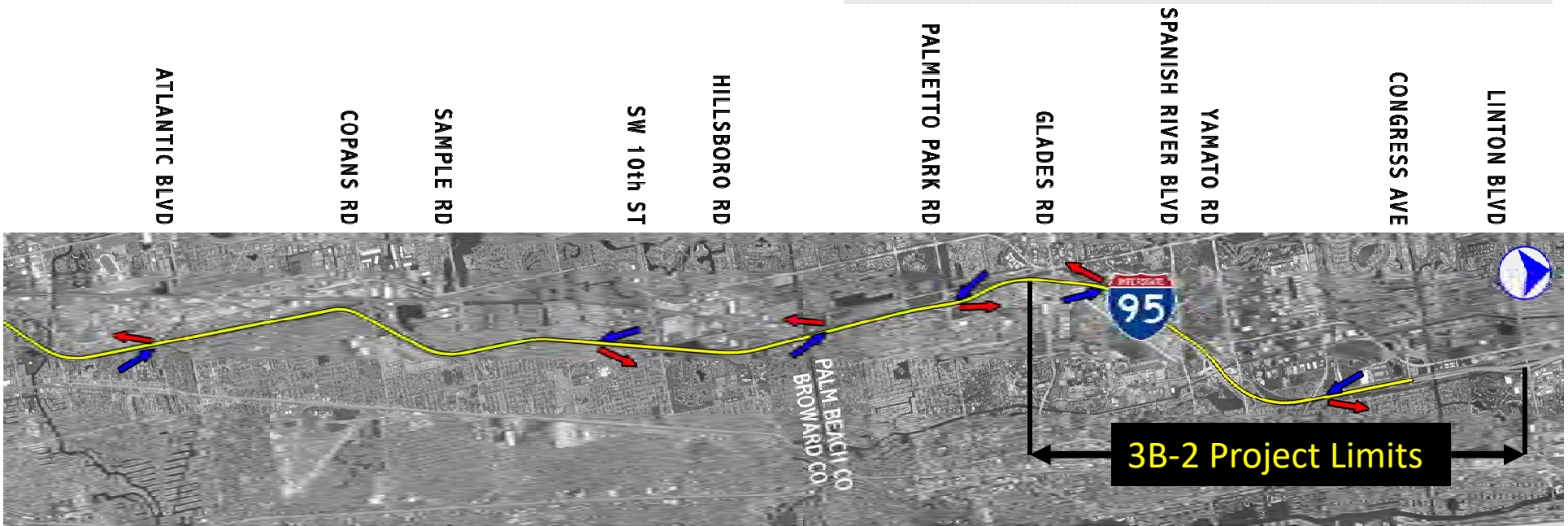
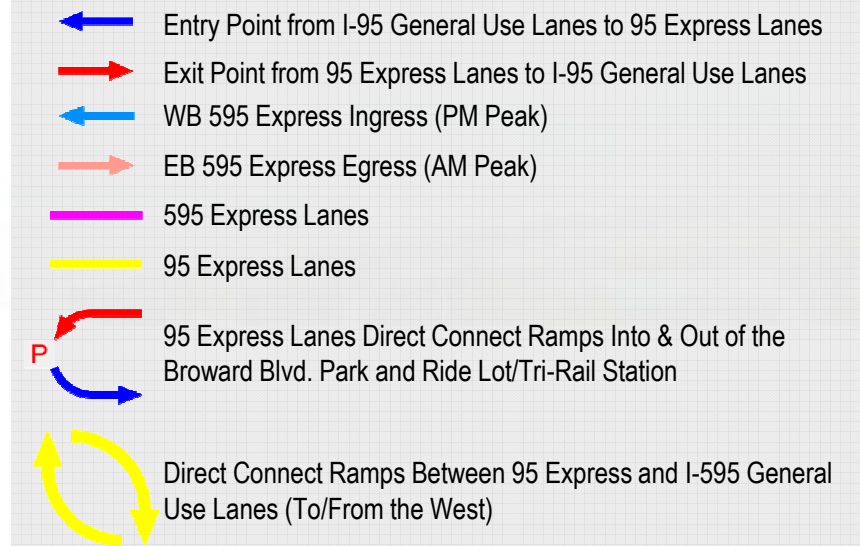


INGRESS / EGRESS POINTS





INGRESS / EGRESS POINTS





95 EXPRESS

SUMMARY SCOPE OF PLANNED IMPROVEMENTS

95 EXPRESS PHASE 3
Broward & Palm Beach Counties



PROJECT LIMITS

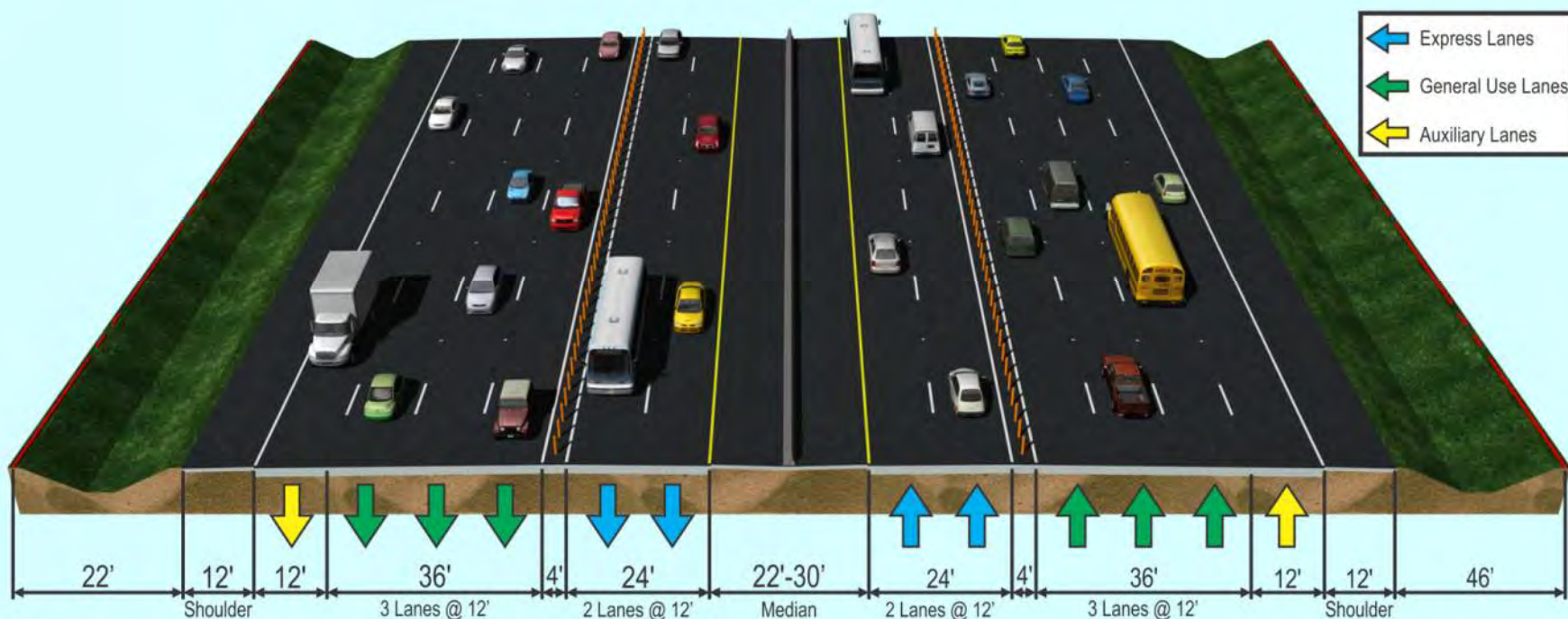
South of Glades
Road to Linton
Boulevard (FY 2019
Letting)



PROJECT HIGHLIGHTS

- 6.4 Miles of Roadway Widening and Milling/Resurfacing/Overbuild
- Addition of 2 Express Lanes both North and Southbound (Convert 1 existing HOV Lane to Express and widening to provide 2nd Express Lane)
- Congress Ave. Safety Improvements
- Widen I-95 Bridge over C-15 Canal
- Clint Moore Rd. Overpass Bridge Replacement
- I-95 at Glades Road Interchange Improvements
- I-95 at Linton Blvd. Interchange Improvements

ROADWAY TYPICAL SECTION

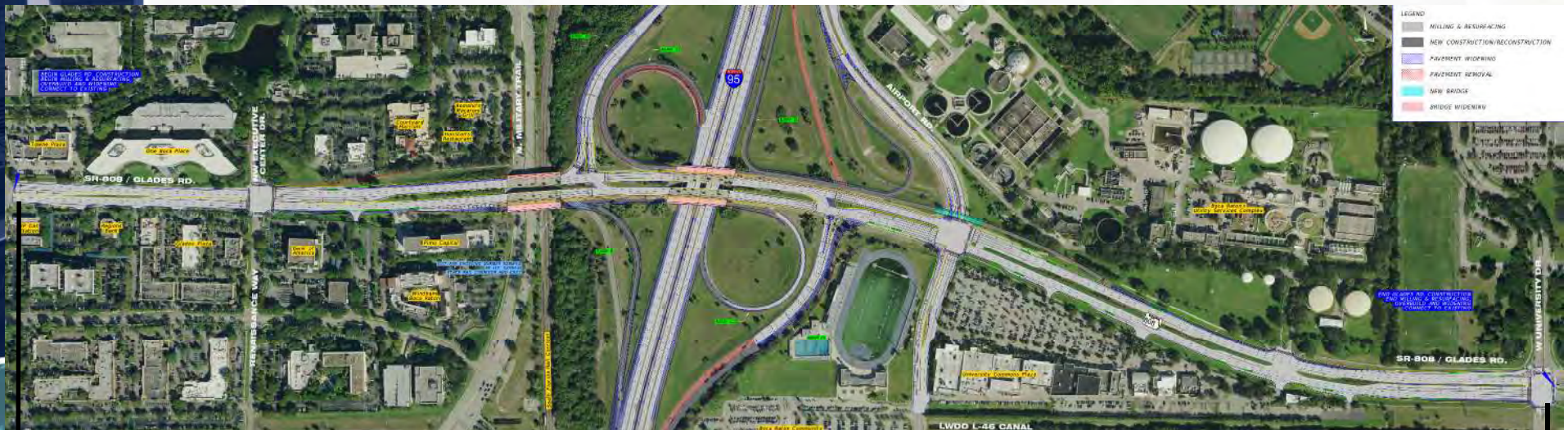


- Addition of 2 Express Lanes both North and Southbound (Convert 1 existing HOV Lane to Express and widening to provide 2nd Express Lane)
- Existing General Purpose and Auxiliary Lanes to Remain

Limits are:

- Glades Road to Congress Avenue

GLADES ROAD INTERCHANGE

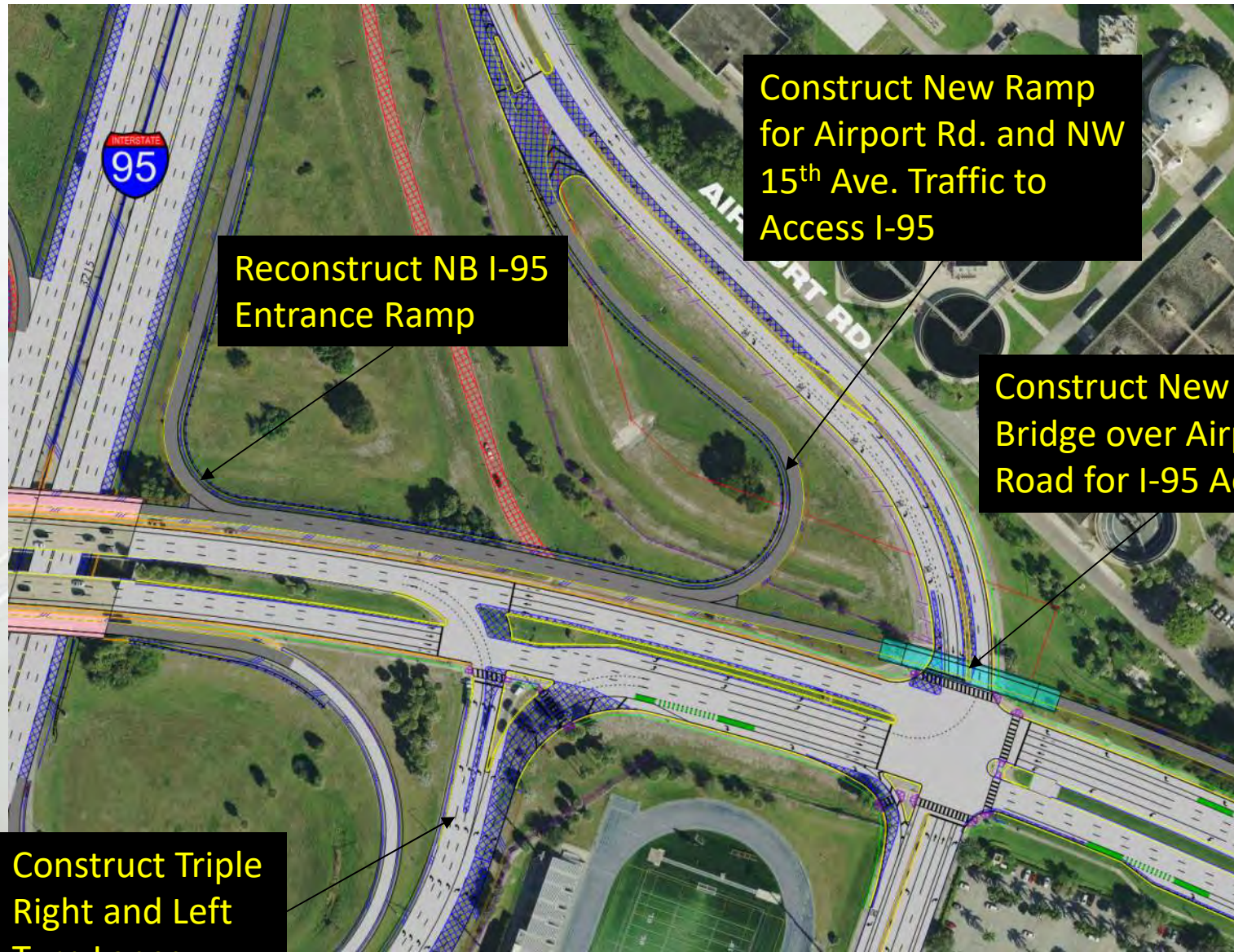


Limits of Glades Road Improvements

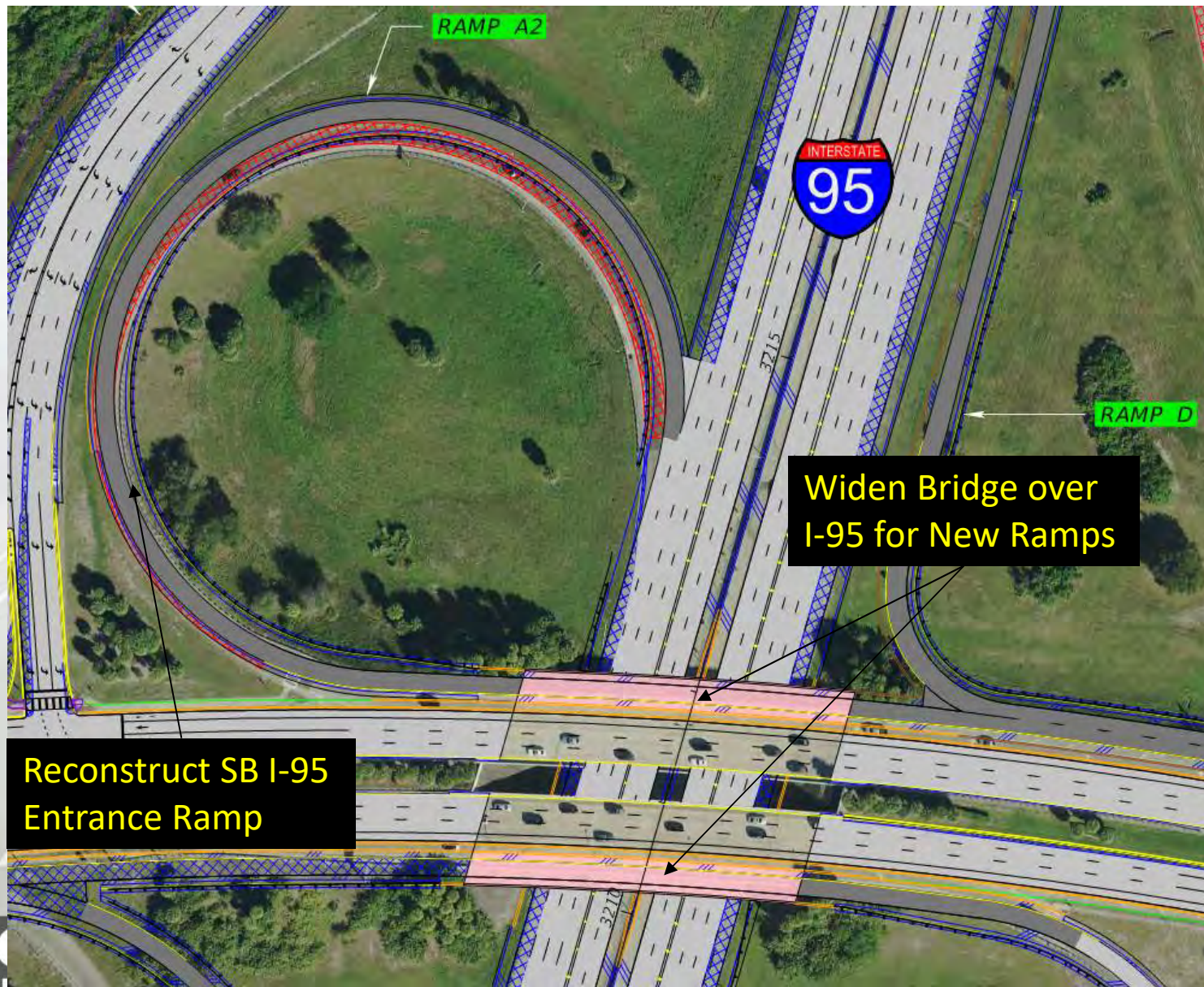
GLADES ROAD INTERCHANGE



GLADES ROAD INTERCHANGE



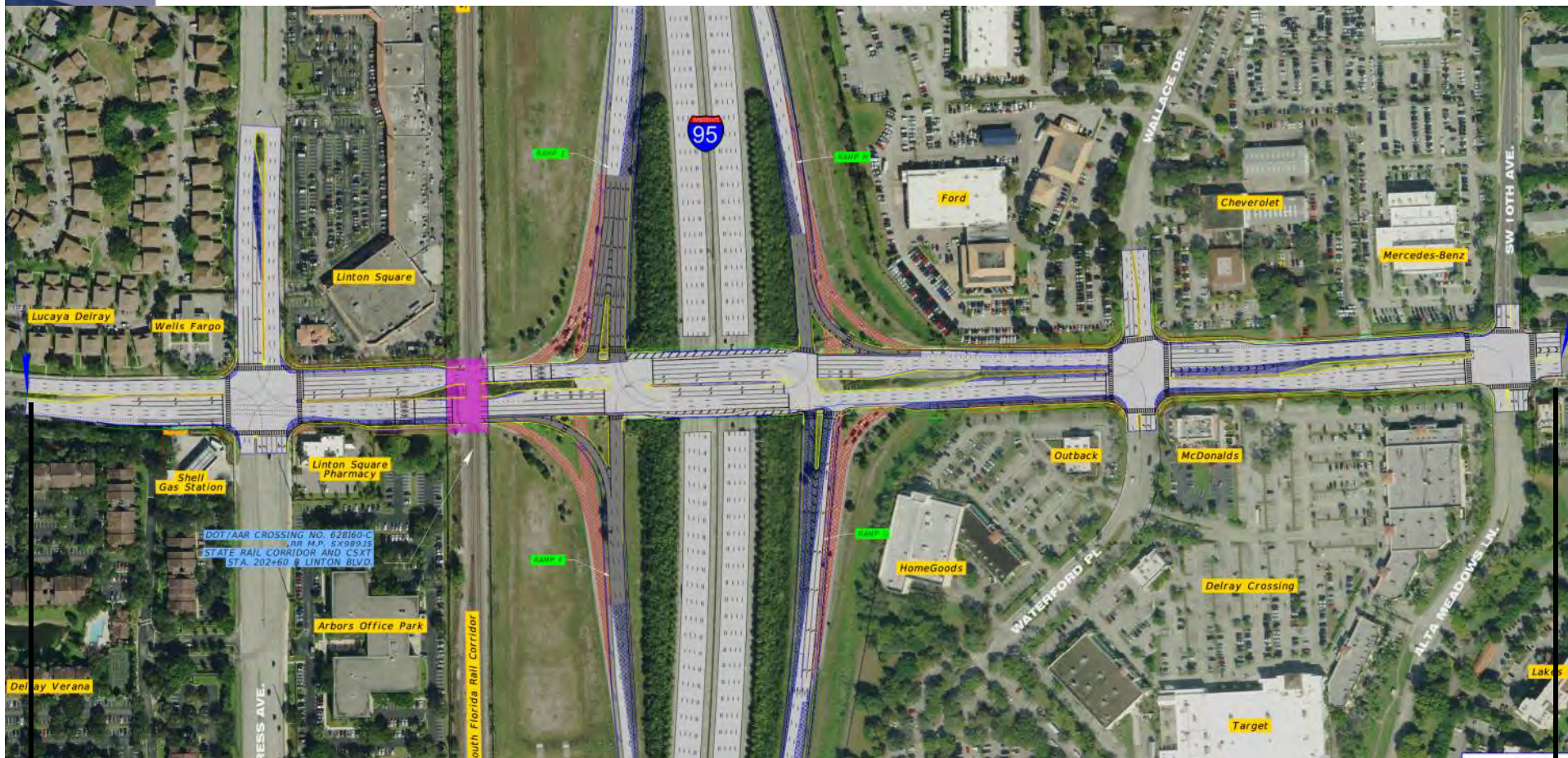
GLADES ROAD INTERCHANGE



GLADES ROAD INTERCHANGE



LINTON BOULEVARD INTERCHANGE



Limits of Linton Blvd. Improvements

LINTON BOULEVARD INTERCHANGE

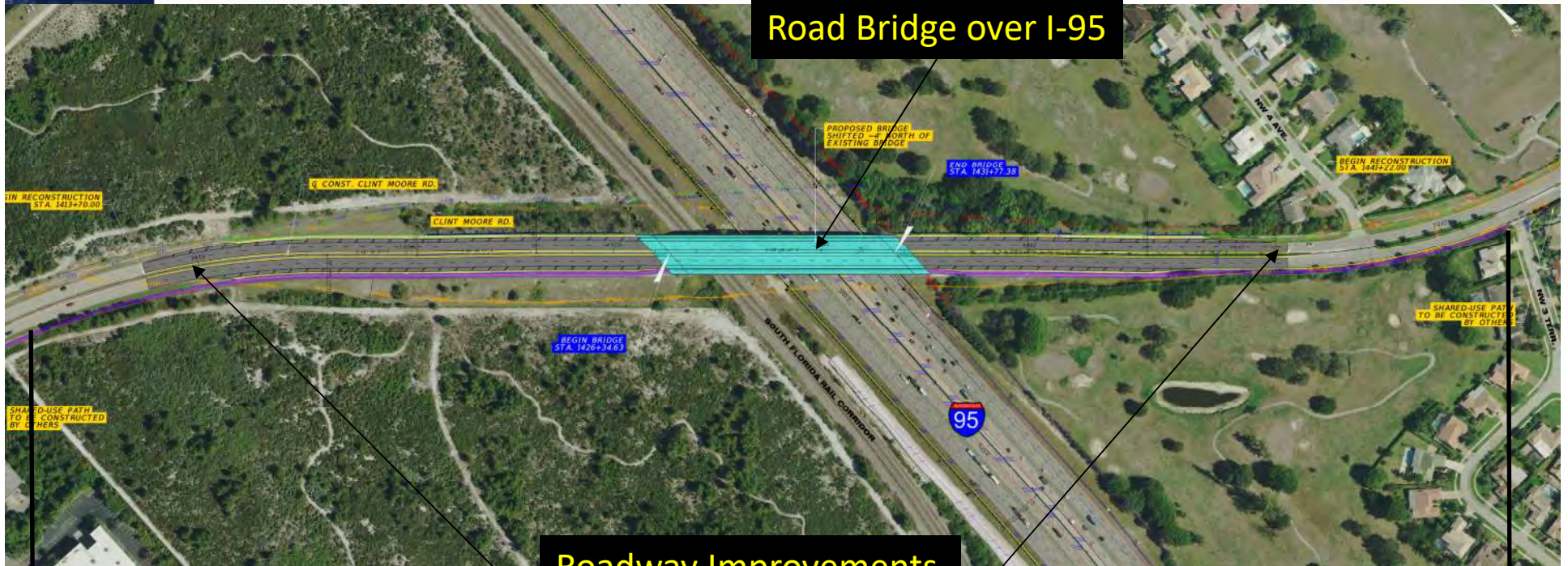


LINTON BOULEVARD INTERCHANGE



CLINT MOORE BRIDGE OVERPASS

Replace Clint Moore Road Bridge over I-95



Roadway Improvements as Needed to Connect to Existing Roadway

Construct Shared Use Path

PROPOSED NOISE WALLS

- New Noise Walls:
 - ~825 Linear Feet of Ground Mounted
 - ~1,960 Linear Feet of Shoulder Mounted



PROPOSED NOISE WALLS

| Noise Walls | | | |
|-----------------|----------------------------|--------------------|--------------------------------|
| Location Number | Type of Sound Barrier Wall | Approximate Length | Adjacent Community |
| 1 | 8' Tall Shoulder Mounted | 450 | Hidden Valley and Tropic Palms |
| 2 | 14' Tall Shoulder Mounted | 1,509 | Bahia Delray and Tierra Verde |
| 3 | 22' Tall Ground Mounted | 825 | Tierra Verde |

RAMP SIGNALING

- Controls the Rate of Traffic Entering an Expressway
 - Improves the Flow of Traffic Entering the Mainline While Avoiding Lengthy Backups on the Entrance Ramps and Cross-Streets
- Glades Rd.
 - Yamato Rd.
 - Spanish River Blvd.
 - Congress Ave.
 - Linton Blvd.



Ramp Signals Operational in Miami Dade County and Under Construction in Broward County



LIGHTING

- System Upgrades to Meet FDOT Lighting Standards
 - Mainline
 - Congress
 - Glades
 - Linton
- Proposed Roadside Shoulder and Wall Mounted Light Poles
- LED Lighting Retrofit for I-95 Mainline, supplemented as needed with outside lighting



PROJECT SCHEDULE

Phase 3B-2 Project Schedule

- Advertisement for Design-Build
 - May 29, 2018
- Bid Opening
 - March 20, 2019
- Begin Final Design and Permitting
 - Summer 2019
- Begin Construction
 - Spring 2020
- End Construction
 - Late 2023/Early 2024

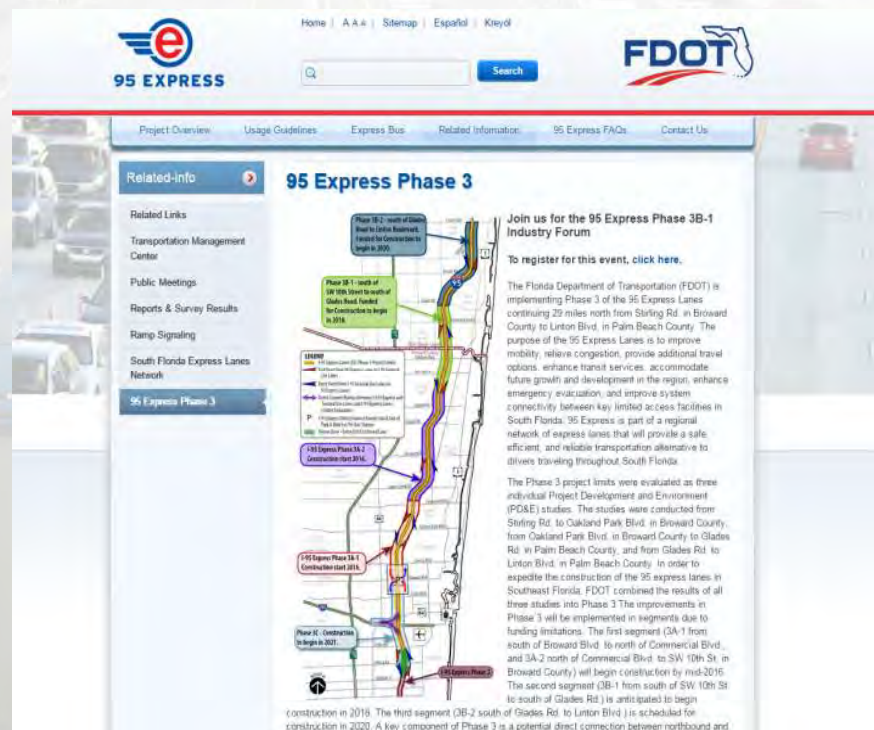
PROJECT CONTACT

- Vanita Saini, PE
Project Manager
Office: (954) 777-4468
E-mail:
Vanita.Saini@dot.state.fl.us

PROJECT WEBSITE

- Go to Website for Updates on Segmentation, Concepts, Presentations, Reports, etc.

www.95express.com/phase3



PUBLIC QUESTIONS



FIVE MINUTE BREAK

ADDITIONAL TECHNICAL INFORMATION

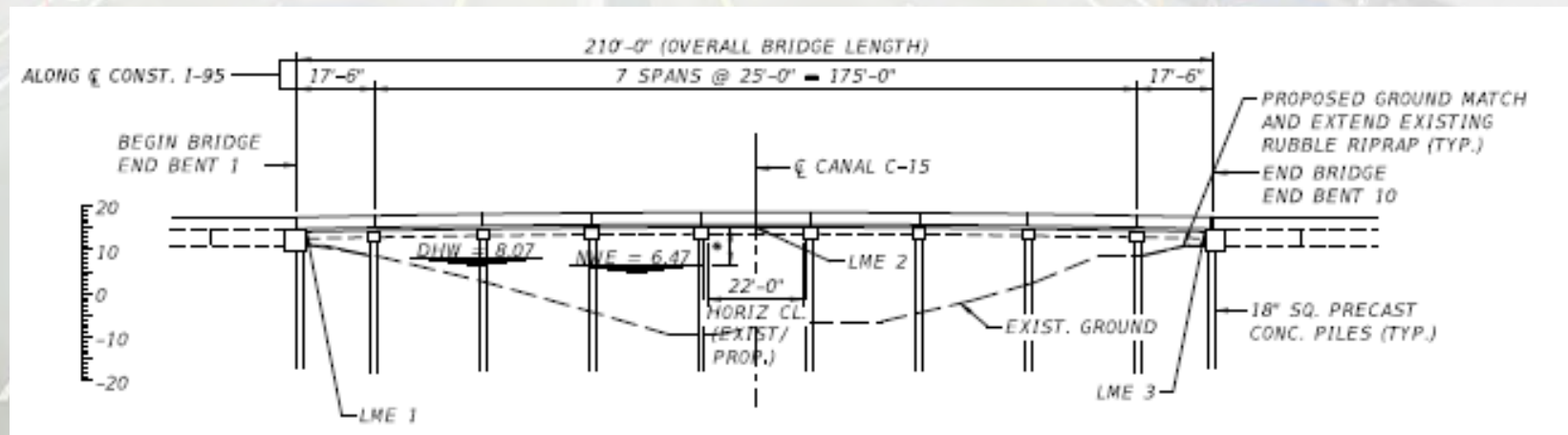
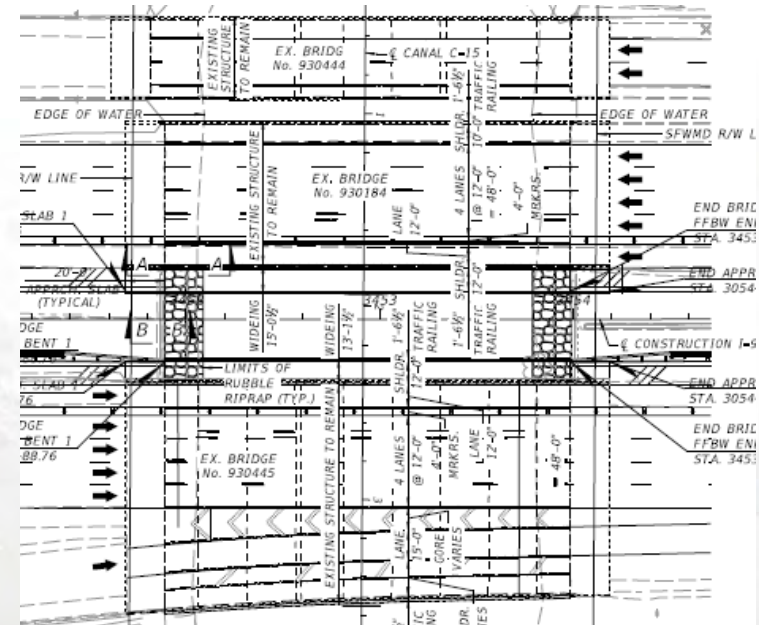
DRAINAGE

- Stormwater Management Facilities
 - Linear dry detention and retention ponds (onsite swales)
 - Dry detention ponds (infield ponds)
 - New/modified control structures and outfall pipe retrofits
 - Minimize Impacts to Existing and Accommodate Proposed Landscaping



DRAINAGE

- SFWMD C-15 Canal
 - Shoreline Stabilization
 - Bridge Hydraulic Report



STRUCTURES

- Bridge Improvements
 - C-15 Canal Bridge Widenings
 - Clint Moore Road Bridge Replacement
 - Bridge Widening of Glades Road over I-95
 - Bridge Widening of Glades Road over Military Trail/SFRTA
 - New Glades Westbound Ramp Bridge over Airport Rd.
- Retaining Walls
 - 5600 Linear Feet of Retaining Walls



STRUCTURES

- Sign Structures:
 - 11 Cantilever Sign Structures
 - 10 Overhead ITS Structures
 - 3 Truss DMS Structures
 - 2 Toll Gantry Structures



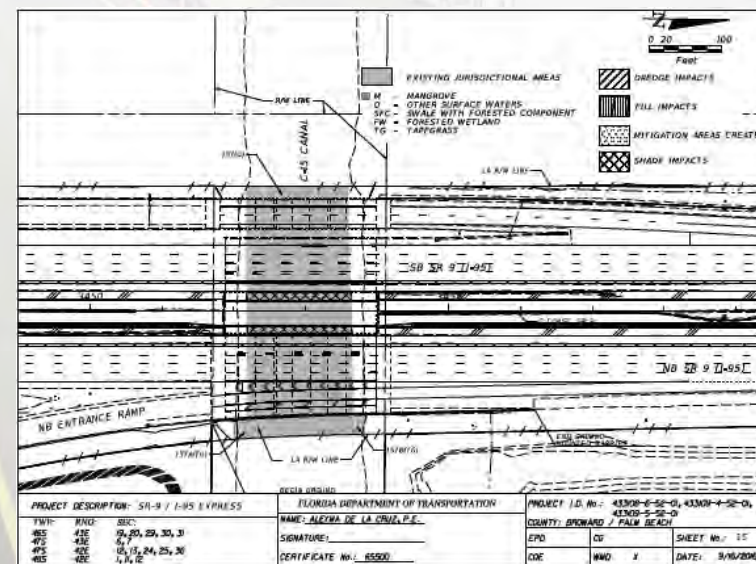
ENVIRONMENTAL

- T&E Species
 - Endangered Species Biological Assessment Report (ESBA) and Wetland Evaluation Report (WER) prepared during the PD&E Study
 - Coordination conducted with FWS and NMFS for wood stork, gopher tortoise, burrowing owl, scrub jay, manatee, and indigo snake during PD&E Study
 - Gopher tortoises relocated to Blazing Star Preserve



ENVIRONMENTAL

- Wetlands & Mitigation
 - Jurisdictional Wetland Survey, Environmental Assessments, and Wetland Impact & Mitigation Assessment Completed



PERMITTING

- Department obtained/is obtaining the following permits:
 - SFWMD Individual Conceptual ERP (issued)
 - SFWMD ROW Occupancy Permit – C-15 Canal (issued)
 - SFWMD Water Use (Dewatering) Master Permit(s) (issued)
 - USACE Section 404 Dredge & Fill Permit (pending)
 - USACE Section 408 Approval(s) (pending)
- Permit Applications to be submitted by Department in May 2018 to incorporate Glades Road, Linton Road, and recent Spanish River D-B Project Modifications
 - SFWMD Individual Conceptual ERP (Major Modification)
 - Permits anticipated prior to Price Proposal submittal date



PERMITTING

- DB Firm Responsible for Obtaining Following Permits per Phase(s):
 - NPDES Construction Generic Permit
 - SFWMD Individual ERP (Major Modification) for Construction Authorization
 - Modifications to SFWMD and USACE permits due to Final Design and/or Construction Changes, including Special Conditions Documentation in Support of SFWMD Master Dewatering Permit Requirements



LANDSCAPE

- Department to Provide the Following:
 - Tree Inventory for Phase 3B-2 limits
 - Landscape Opportunity Plans Illustrating Areas to be Preserved for Future Landscape Opportunities and Tree Relocation Plans Illustrating Locations Where Existing Trees Could Potentially be Relocated Within Project Limits
- DB Firm Responsible for:
 - Tree Relocation Plans and Landscape Opportunity Plan
 - Relocation of Suitable Native Trees Impacted by Construction



RIGHT OF WAY

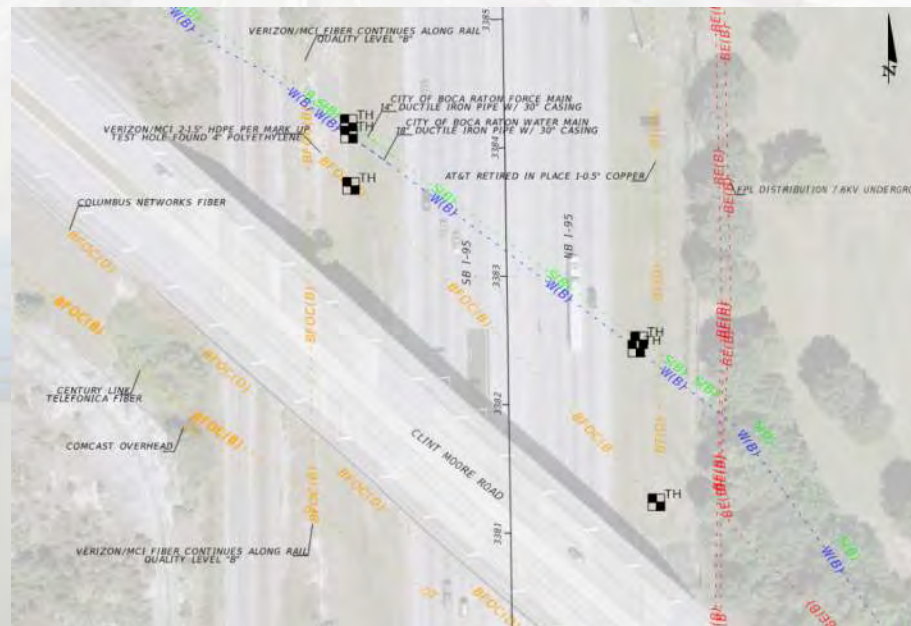
- Linton Blvd.
 - ROW required in select locations both north and south sides of Linton Blvd. between Congress Ave. to SW 10th Ave.
 - No business or residential relocations
- Glades Road
 - ROW required from City of Boca Raton and Boca Raton High School
- All necessary ROW to be acquired by FDOT

UTILITY COORDINATION

- Department Coordinating with UAOs for Phase 3B-2:
 - UAO Design Costs (Phase 36)
 - Utility Relocation Costs (Phase 56)
 - Subsurface Utility Engineering
- Streamlining Utility Coordination for DB Firms by Advancing UAO Utility Design Efforts for Unavoidable Utility Relocations
- DB Firm Responsible for All Costs Related to Utility Coordination and Utility Relocations that is Beyond Anticipated Relocations from RFP Concept Design

UTILITY COORDINATION

- Department Preparing the Following Items
 - Utility Base Map
 - Preliminary Utility Conflict Matrix
 - Any Utility Relocation Agreements



GEOTECHNICAL

- Department Prepared the Following:
 - Geotechnical Report (PD&E Study)
 - Geotechnical Investigation Completed
 - Roadway
 - Structures
- DB Firm Responsible for Supplemental Geotechnical Investigations



SURVEY

- Department Prepared the Following (Linton and Glades Complete, I-95 In-Progress):
 - Controlled Rasters (Aerials)
 - Alignment and Right-of-Way Survey
 - Aerial Planimetrics (Topo and DTM) for I-95 Mainline and Side-Streets
 - Supplemental Ground Topo and DTM Within Some Obstructed Areas (e.g. below bridges, and adjacent to sound barriers and landscape areas)
 - Bathymetric Survey and DTM Within Canal Crossings
 - Subsurface Utility Engineering
- DB Firm responsible for:
 - Full Design Survey
 - Existing Drainage Survey
 - Supplemental Topo and DTM in Obstructed Areas as needed
 - Supplemental Subsurface Utility Engineering as needed

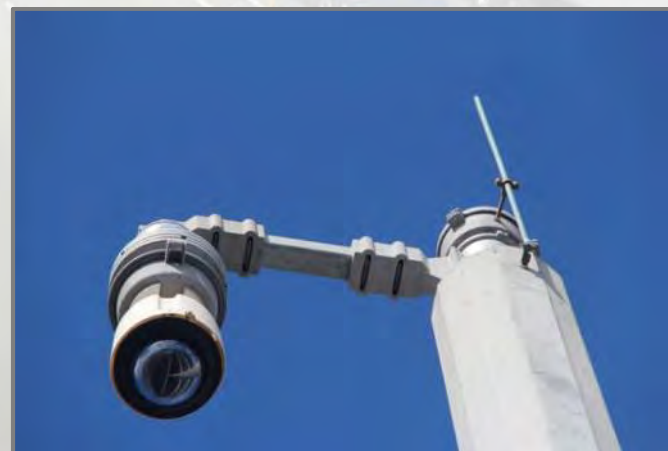
INTELLIGENT TRANSPORTATION SYSTEM

- Maintain Continuous Operation of Existing ITS Devices, Communication Systems and Power Distribution Systems
- Replace Existing ITS Devices (CCTV Cameras, MVDS Subsystem)



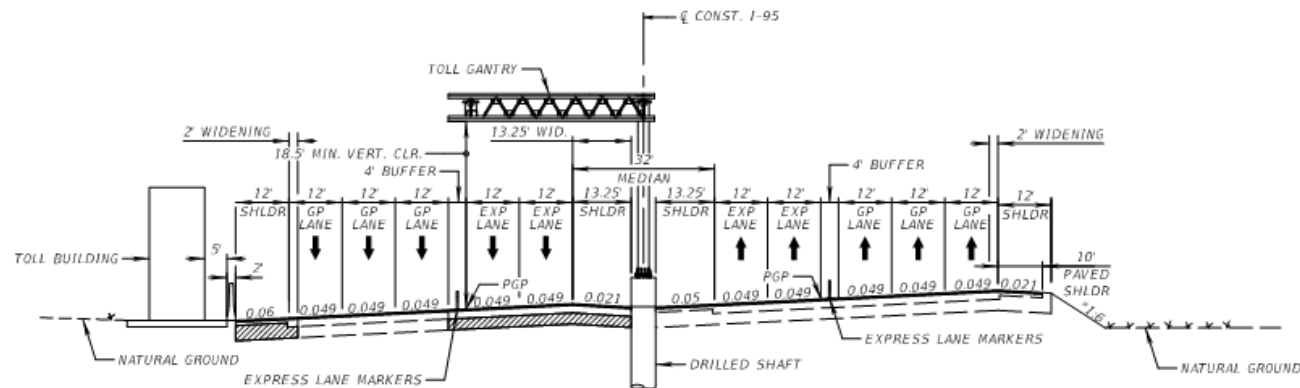
INTELLIGENT TRANSPORTATION SYSTEM

- Replace Existing ITS Communication System with Proposed 144-Count Fiber Optic Backbone Cables on the West Side of I-95
- Integration of ITS Devices, Communications System, Power Distribution System into Existing Regional ITS Network
- FTE Coordination



TOLLING

- 2 uni-directional Tolling Points
- Non-Accessible Toll Gantries
- Turnpike General Tolling Requirements

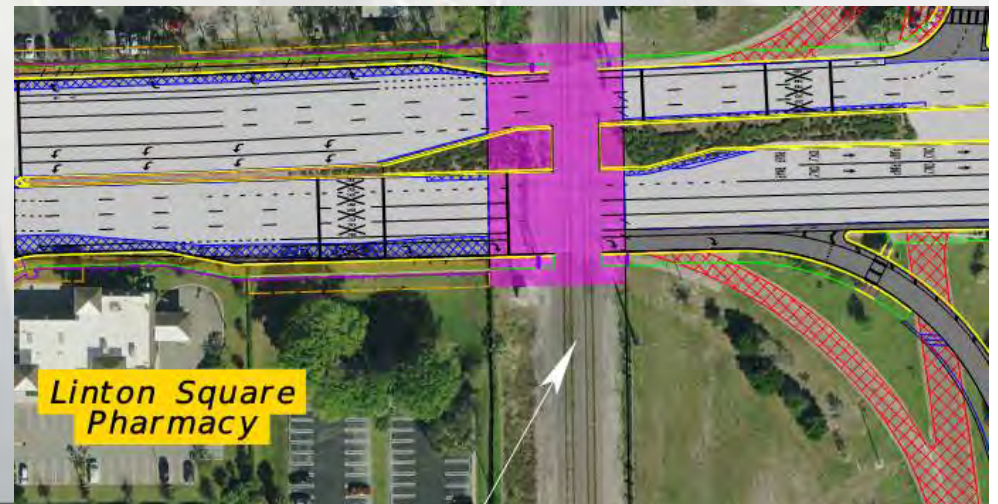


TYPICAL SECTION 16
I-95 (EXPRESS)
CL CONST. I-95 STA. 3352+30.00
PROPOSED SB EXPRESS LANES GANTRY LOCATION

DESIGN SPEED = 70 MPH

RAILROAD COORDINATION

- Linton Boulevard
 - At Grade Crossing
- Clint Moore Road over SFRTA
- Glades Road over SFRTA



AIRSPACE REQUIREMENTS

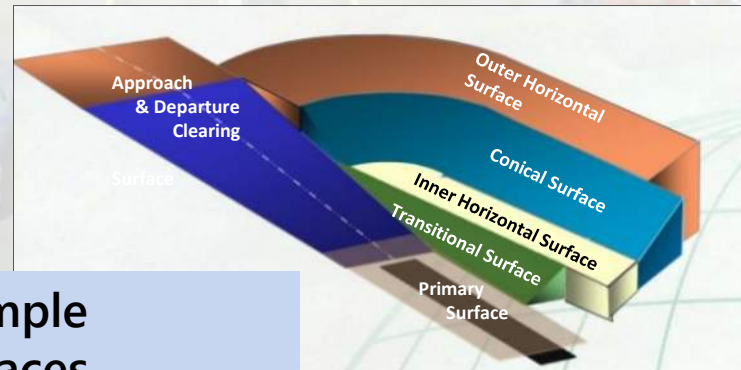
Design Coordination

- FAA Obstruction Evaluation / Airport Airspace Analysis (OE/AAA)
 - <https://oeaaa.faa.gov/oeaaa/external/portal.jsp>
- Boca Raton Airport Authority Internal Review
- FAA Technical Operations and Air Traffic Control Review and Coordination

AIRSPACE REQUIREMENTS

Regulatory

- FAR Part 77
- Terminal Instrument Procedures (TERPS)
- One Engine Out – Obstacle Identification Surface (OEI-OIS)
- Florida Statute Chapter 333 – Airport Zoning



Example
Surfaces

AIRSPACE AND LAND USE REQUIREMENTS

DB Firm Responsibility

- FAA Form 7460 for project components meeting notice criteria.
- Runway Protection Zone (RPZ) Analysis for any land use changes within the Runway 5-23 RPZ

PUBLIC OUTREACH

- DB Firm Responsible for Ongoing Support to FDOT Public Information Officer and Community Outreach Specialist for:
 - Community Awareness Plan
 - Public Meetings/Workshops
 - Technical Assistance/Display Materials



KEY CONSTRUCTION OBJECTIVES

- Corridor Continuity and Functionality
 - Minimize inconvenience to the traveling public during construction
 - Coordination and Compatibility Between Adjacent Projects (including ITS, Signing, Roadway, and MOT continuity)
 - Expedited Construction of Sound Barrier Walls
 - Expedite Work on Cross-Streets and Interchanges with I-95 bridge widening
- Incentive/Disincentive
 - 95 Mainline
 - Congress Ave.
 - Glades Road
 - Linton Blvd.
 - Clint Moore Road



PROCUREMENT PROCESS AND SCHEDULE

D-B PROCUREMENT PROCESS

- Design Build Contract
- Technical Review Committee
 - Kevin Micocci, PE
 - Nadir Rodrigues, PE
 - Christian Rojas, PE
 - Scott Thurman, PE

PHASE 3B-2 DESIGN-BUILD PROCUREMENT SCHEDULE

| Procurement Activity | Milestone Date |
|---------------------------------------|------------------|
| Advertisement | May 29, 2018 |
| Expanded Letters of Interest Due | June 18, 2018 |
| Shortlist Posting | July 25, 2018 |
| Final Draft RFP Provided to D-B Firms | August 6, 2018 |
| Technical Proposals Due | January 14, 2019 |
| Price Proposals Due | March 20, 2019 |
| Anticipated Award Date | April 23, 2019 |
| Anticipated Execution Date | May 3, 2019 |

CEI PROCUREMENT SCHEDULE

- Phase 3B-2
 - Advertisement Start: August 6, 2018
 - Advertisement Close : August 20, 2018
 - Shortlist: September 10, 2018
 - Final Selection: October 1, 2018
 - NTP: December 31, 2018

ENGINEERING DATA TO BE MADE AVAILABLE WITH FINAL DRAFT RFP

- Electronic Survey Data
- Existing Utilities Base Map and Potential Conflict Matrix
- Concept Plans
- Typical Section Package
- Pavement Design Report
- Design Exceptions and Variations
- Right-of-Way Maps
- Master Signing, ITS and Lighting Plans
- Lighting Analysis Report
- Landscape Concept Design
- Geotechnical Reports
- SFWMD Individual (Conceptual) ERP Application
- SFWMD Standard Right of Way Occupancy Permit(s) Application
- SFWMD Water Use Permit (Master Dewatering) Applic.
- USACE Section 404 Dredge & Fill Permit Application
- USCG Bridge Permit Applic.
- Conceptual Drainage Report
- Bridge Hydraulics Report
- Cross Drain Report
- Sound Barrier and Retaining Wall Requirements and Locations

ONE-ON-ONE MEETINGS

- April 12, 2018 – 3-5 PM
 - April 13, 2018 – 2-3 PM
 - April 16, 2018 – 2-4 PM
 - April 26, 2018 – 3-5 PM
 - April 30, 2018 – 1:30-5 PM
-
- Contact Laila Haddad, MRG, 786-837-4881 to schedule

PROJECT CONTACTS

- Before Advertisement:
Vanita Saini, PE
Project Manager
Office: (954) 777-4468
E-mail: Vanita.Saini@dot.state.fl.us
- After Advertisement:
Stacy Brown
Procurement Officer
Office: (954) 777-4620
E-mail: stacy.brown@dot.state.fl.us

ADDITIONAL QUESTIONS

