



# 95 EXPRESS PHASE 3

Broward & Palm Beach Counties



## 95 Express Phase 3B Industry Forum

May 16, 2016 FDOT District 4

# PRESENTATION OUTLINE

- PUBLIC COMMENT
- DBE SPECIALIZED DEVELOPMENT PROGRAM
- PROJECT BACKGROUND
- PROJECT LIMITS AND SEGMENTATION
- SUMMARY SCOPE OF PLANNED IMPROVEMENTS
- PROCUREMENT PROCESS AND SCHEDULE
- NEXT STEPS



# PUBLIC COMMENT



95 EXPRESS

# DBE SPECIALIZED DEVELOPMENT PROGRAM

**95** EXPRESS PHASE 3  
Broward & Palm Beach Counties





# Assisting Small and Disadvantaged Businesses

## FDOT Support Services Programs

*Harvey Hawkins, Senior Project Consultant  
Specialized Development Program*

*Jackie DelRio, Field Consultant DBE Support Services Program*

## FDOT Supportive Services Programs

- Construction Management Development Program/Bond Guarantee Program (FDOT funded)
- DBE/Supportive Services Program (FHWA funded)
- Specialized Development Program (FDOT funded)





## Specialized Development Program (SDP)

- Program was created by FDOT in 2012
- Designed to assist prime contractors on major projects and identify DBEs qualified to compete for subcontracting opportunities
- Currently the program is assisting 22 prime contractors on 46 projects worth almost \$10 billion
- DBEs assisted by SDP have received over \$450 million in contracts on FDOT projects
- Provider: Florida State Minority Supplier Development Council (FSMSDC) and Ariel Business Group



## Specialized Development Program

- Assistance to Primes to meet their DBE Goals on large projects
- Technical Assistance Referrals
- DBE Capacity Assessments
- Bonding and Financing Referrals
- Administers the Bridging the Gap Pilot Program





## SDP Process

- Identification of Interested DBEs qualified to compete for subcontracting opportunities
- SDP contacts DBEs by mail, email, and phone to determine interest in working on FDOT projects
- SDP maintains database and encourages DBEs to complete and maintain business profile
- SDP meets with DBEs to access DBE capacity and capability to compete for subcontracting opportunities



## SDP Process

- Project assigned to SDP
- Major project, over \$50 million
- Usually design-build
- Pre Proposal Meeting
- Shortlist Announced
- SDP requests a list of all items that will not be self-performed by firm (sub-contracting opportunities)





## SDP Process

### SDP DBE Forum

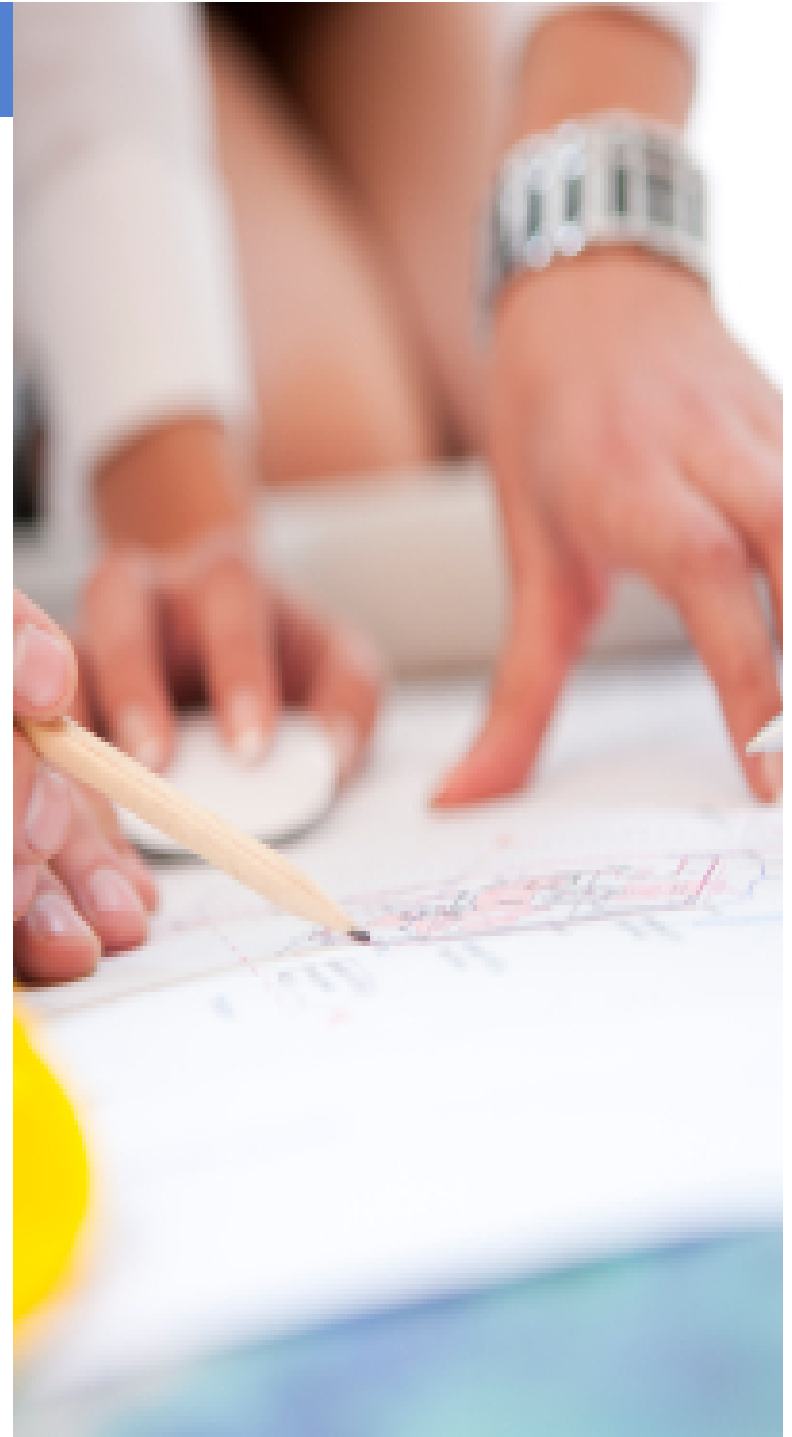
- Scheduled at district office at least 3 weeks prior to submission of pricing proposals
- Shortlisted design-build firms and teams invited and scheduled for meetings with DBEs
- Qualified DBEs are invited to participate in DBE Forum and given the opportunity to meet with primes



## SDP Process

### Pre-Construction Meeting

- Design Completion and Construction Phase
- SDP continues to work with prime's construction staff until project completion to identify additional DBE opportunities and assist the prime with identifying DBEs qualified to perform as sub-contractors
- SDP is available to assist with any DBE related problems and coordinates additional assistance provided by other support service programs
- DBE commitments and payments tracked through the FDOT Equal Opportunity Compliance System (EOC)



## **Additional Assistance Provided BY FDOT Support Services Programs**

### **Construction Management Development Program/ Bond Guarantee Program (CMDP/BGP)**

- Created by the Florida Legislature in 1984
- Designed to improve technical and business management skills, as well as assist in learning how to do business with FDOT
- Provider: Construction Estimating Institute (CEI)
- Training is available to both small (SBE) and disadvantaged (DBE) businesses
- Classroom and online FDOT specific training
- Training available in Spanish





## DBE Support Services Program (DBE/SS)

- Designed to increase the number of certified DBEs participating in highway and bridge construction, as well as, assist DBEs with growing and eventually becoming self sufficient
- Statewide provider: Construction Estimating Institute (CEI)
- Provides the following services:
  - *General outreach and recruiting of potential DBEs*
  - *DBE certification assistance to potential DBEs*



## DBE Support Services Program

Provides the following services to certified DBEs:

- Counseling and one on one technical and managerial assistance
- Assistance with securing bonding and accessing financial assistance programs
- Developmental assistance through the Business Development Program (BDP)
- Matching prime contractors and consultants with certified DBEs for subcontracting opportunities
- Automated Bid Notification System notifies DBEs of contracting and subcontracting opportunities by project location and work classification



## FDOT DBE/SS Bid Matching Program

- Gathers information from the DBEs on the type of work they do by specialty codes and work area
- Unbundles FDOT construction and maintenance project advertisements by line item, including lump sum projects, and matches opportunities to individual DBE work types and work areas.
- Provides customized bid matching reports to all DBEs according to their certified work types and specialty codes.
- Provides DBEs with the names and contact information of the primes that are interested in bidding on specific projects.

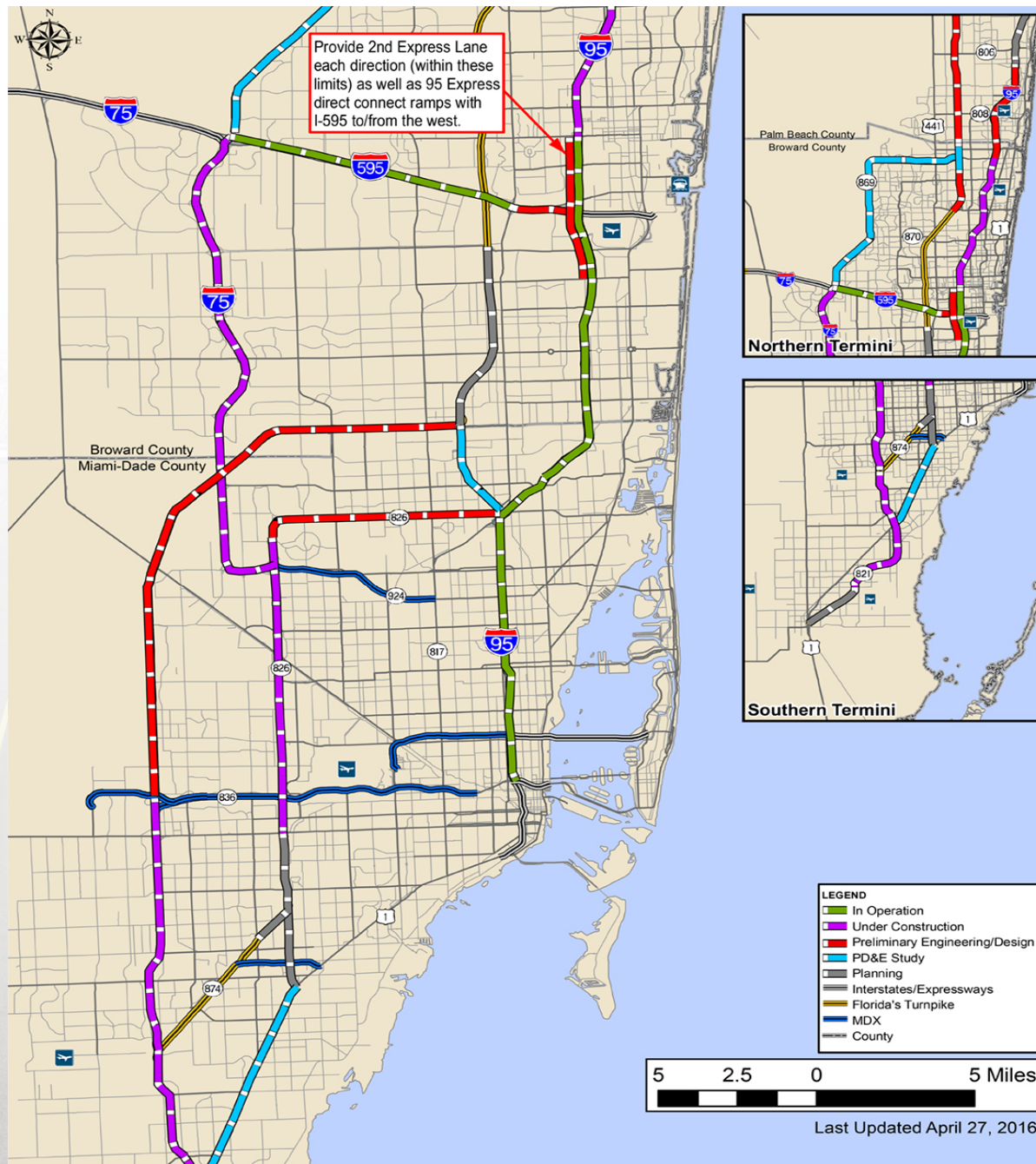




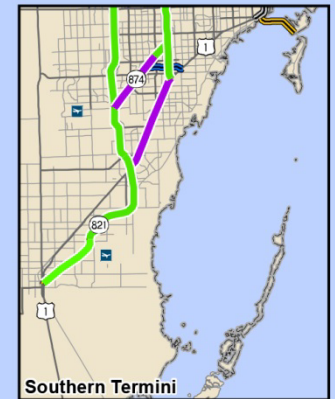
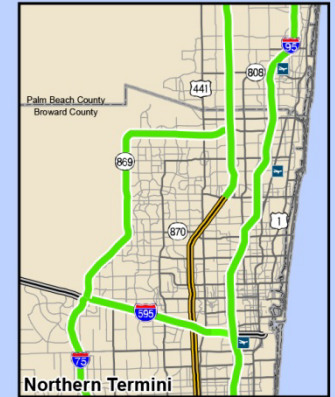
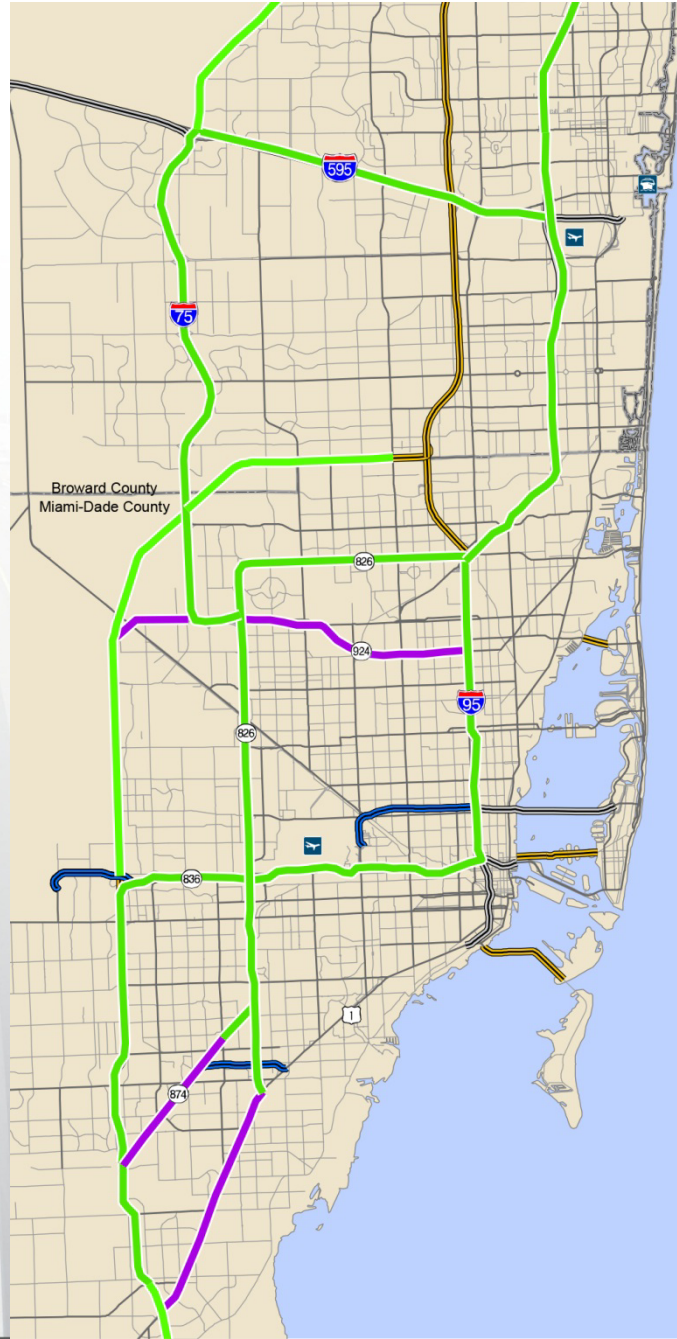
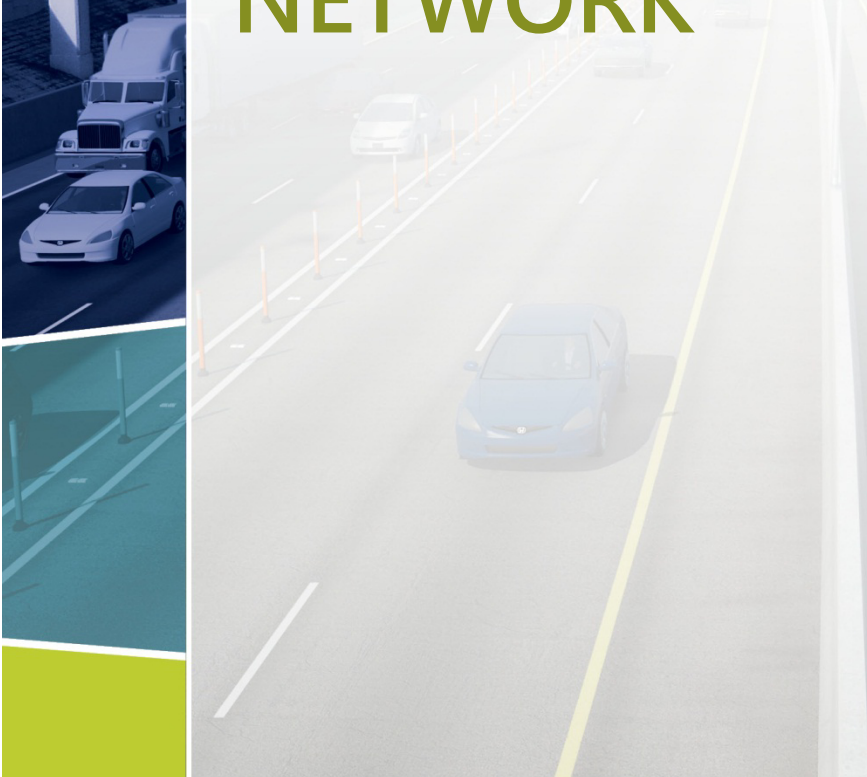
# PROJECT BACKGROUND



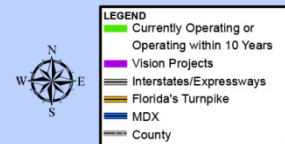
# REGIONAL EXPRESS LANES NETWORK



# 10-YEAR REGIONAL EXPRESS LANES NETWORK

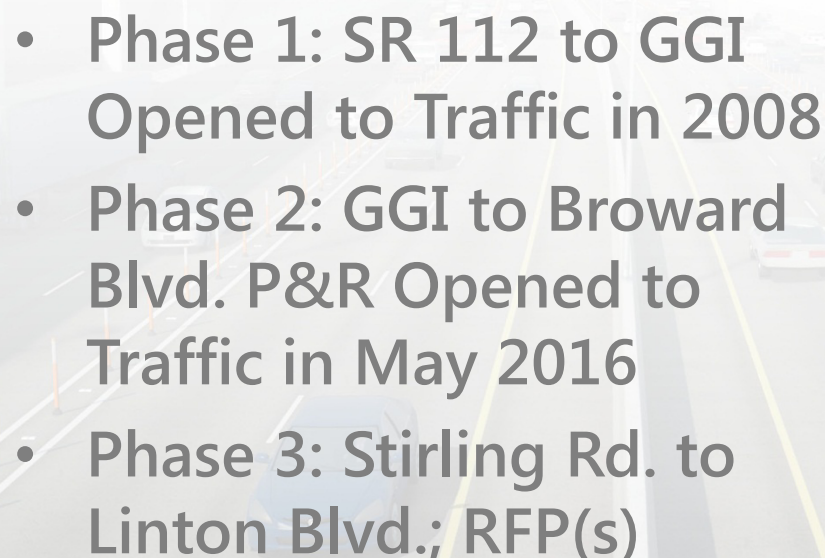


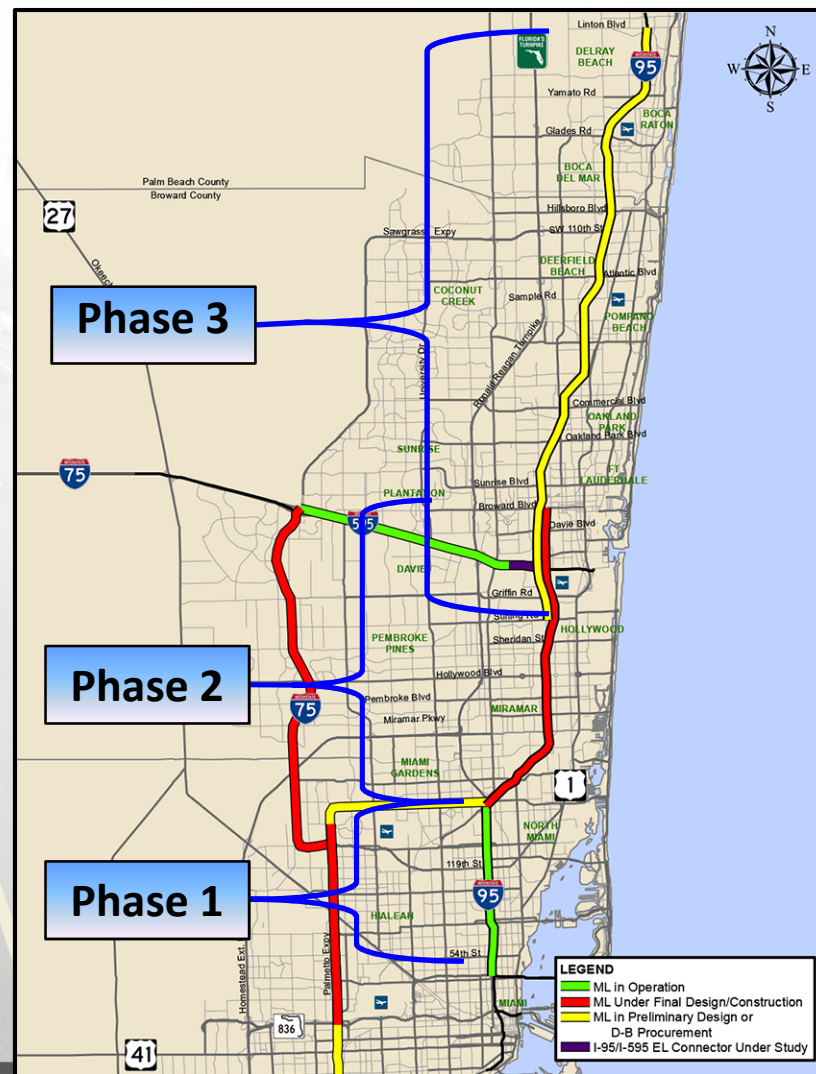
NOTE: Vision Projects represent the potential Future Express Lanes Network in Southeast Florida. Please note, some segments are not yet through the programming process and, therefore, do not have identified funding. The viability of Express Lanes will be further assessed through studies on these corridors.





## Status and Schedule

- 
- Phase 1: SR 112 to GGI  
Opened to Traffic in 2008
  - Phase 2: GGI to Broward  
Bld. P&R Opened to  
Traffic in May 2016
  - Phase 3: Stirling Rd. to  
Linton Blvd.; RFP(s)





95 EXPRESS

# PROJECT LIMITS AND SEGMENTATION

**95** EXPRESS PHASE 3  
Broward & Palm Beach Counties

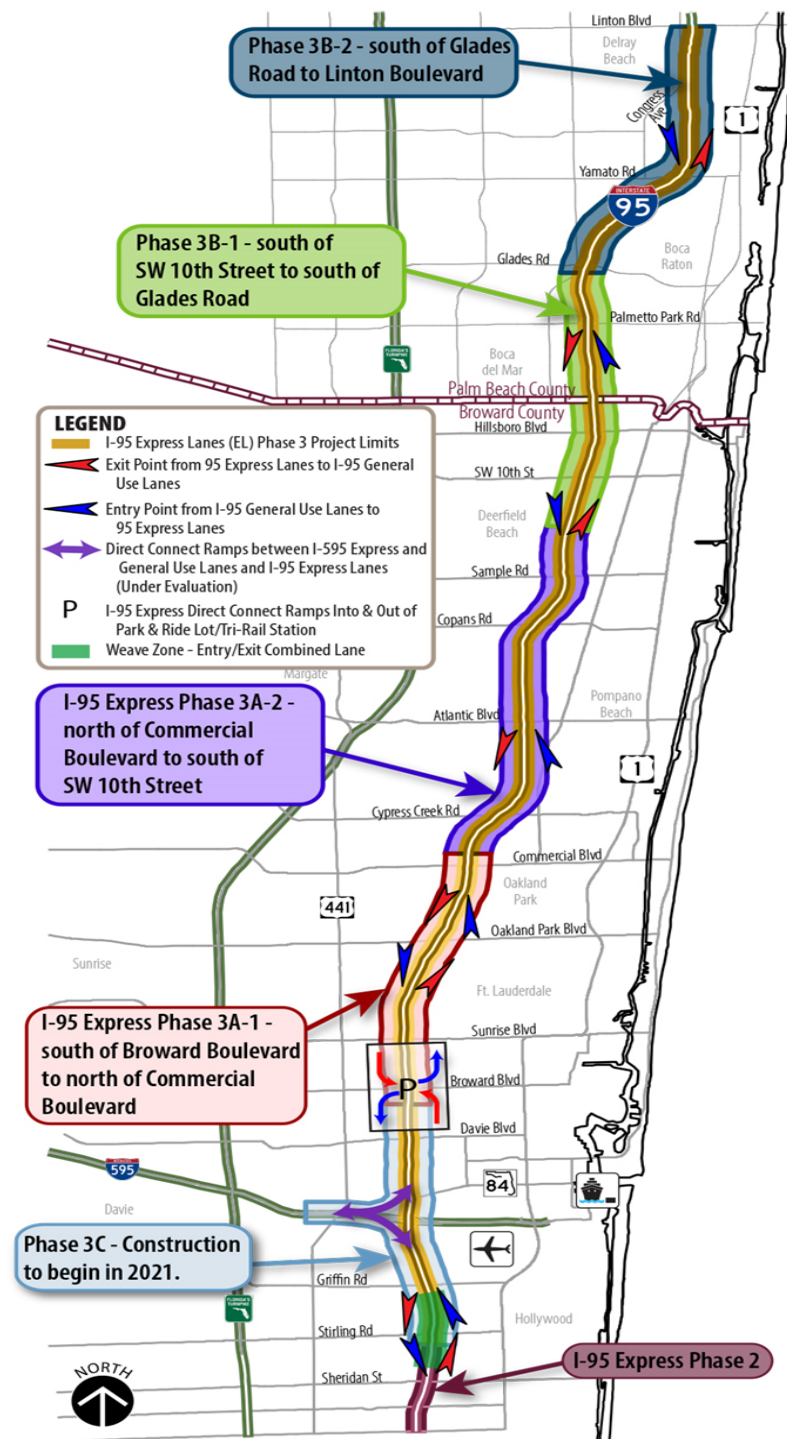




## I-95 PHASE 3 – CURRENT SEGMENTATION PLAN

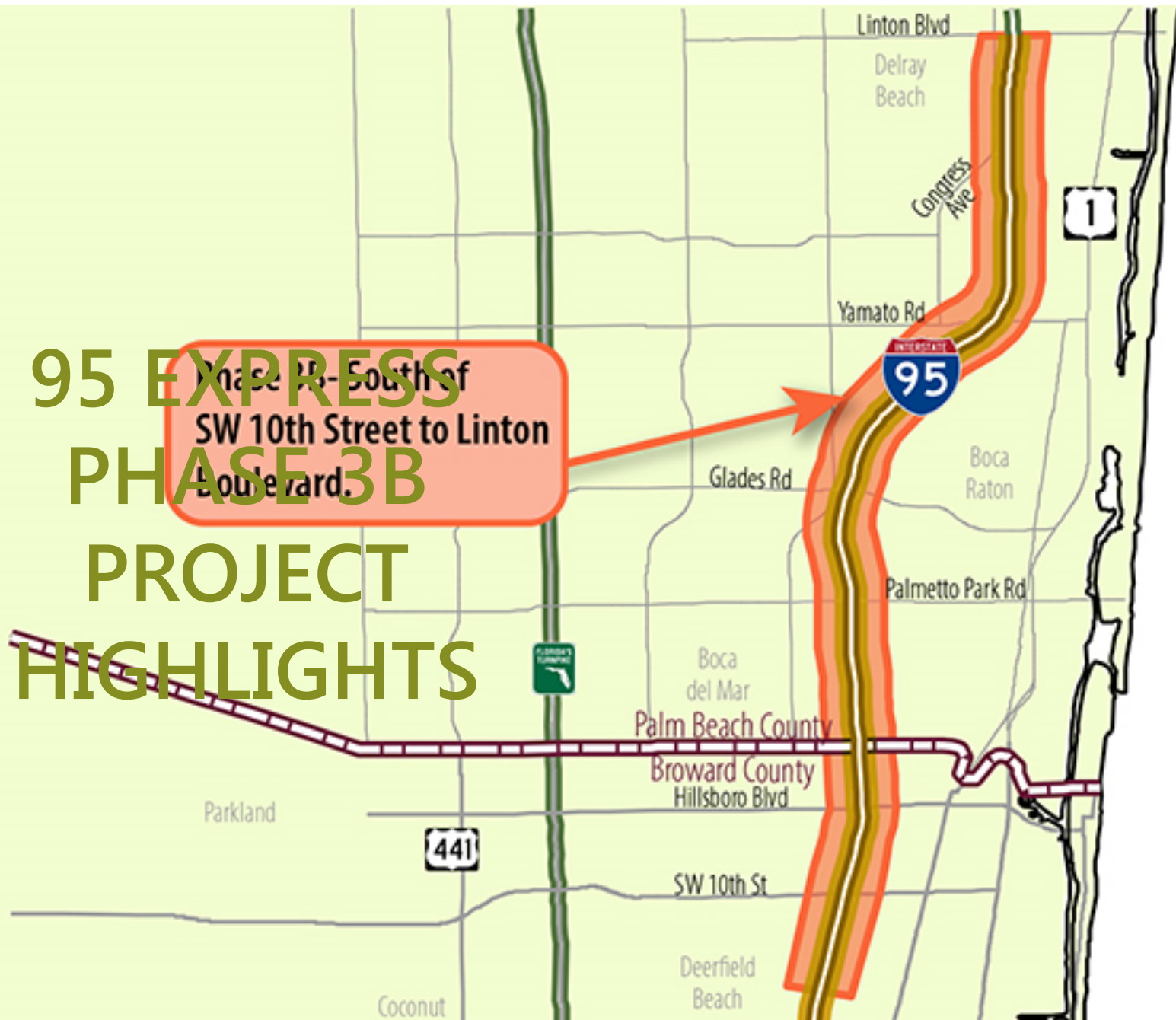
- Phase 3A-1 and 3A-2 starting construction summer 2016
- Phase 3B-1 – South of SW 10<sup>th</sup> St (3A-2 N. Limits) to South of Glades Road
  - Official Advertisement - June 20, 2016
  - Final Draft RFP- Sept. 2016
  - Planned Letting- April 2017
- Future Segments programmed to follow (3B-2 FY 19 & 3C FY 20)

**95 EXPRESS PHASE 3**  
Broward & Palm Beach Counties





# 95 EXPRESS PHASE 3B PROJECT HIGHLIGHTS





# PHASE 3B PROJECT HIGHLIGHTS

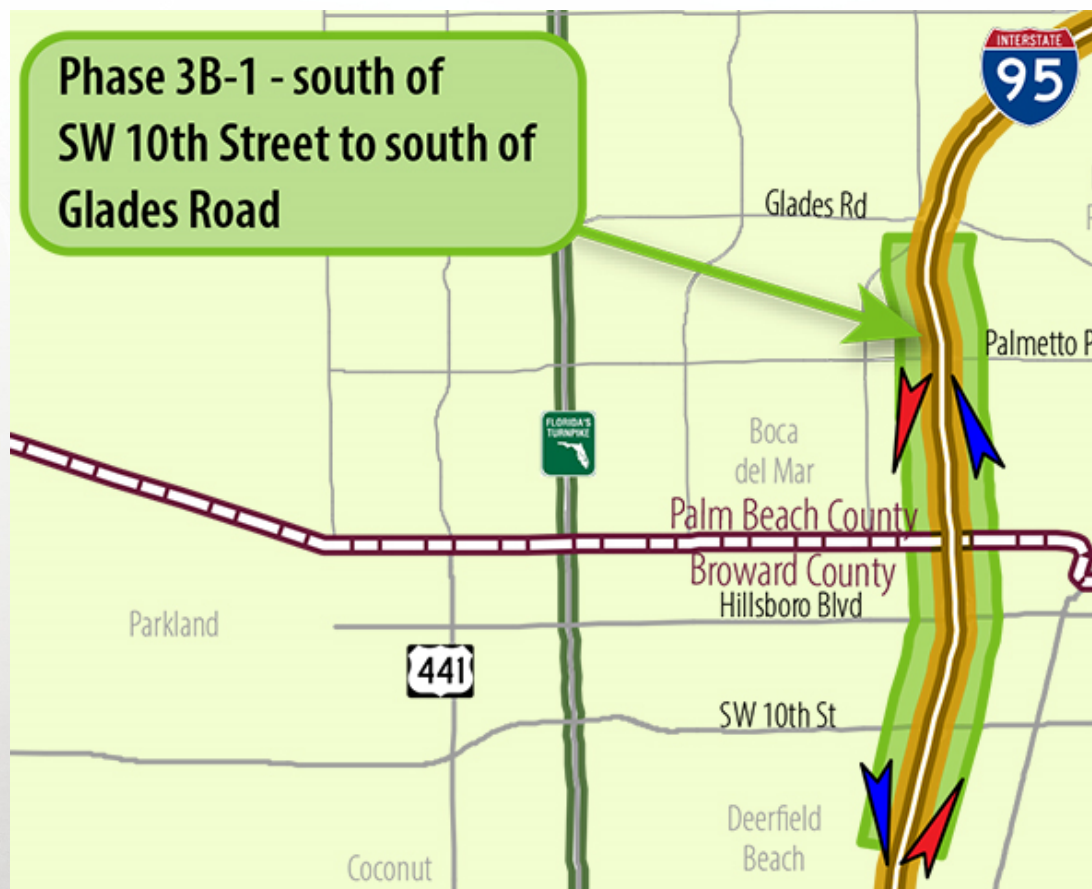
- 10.6 Miles of Roadway Widening and Milling/Resurfacing/Overbuild
- Hillsboro Canal Bridge Replacement and I-95 Reconstruction (increase low member elevation by 3.26' for navigation)
- Clint Moore Rd. Overpass Bridge Replacement
- 9 Mainline Bridge Widenings



# PHASE 3B-1 PROJECT LIMITS

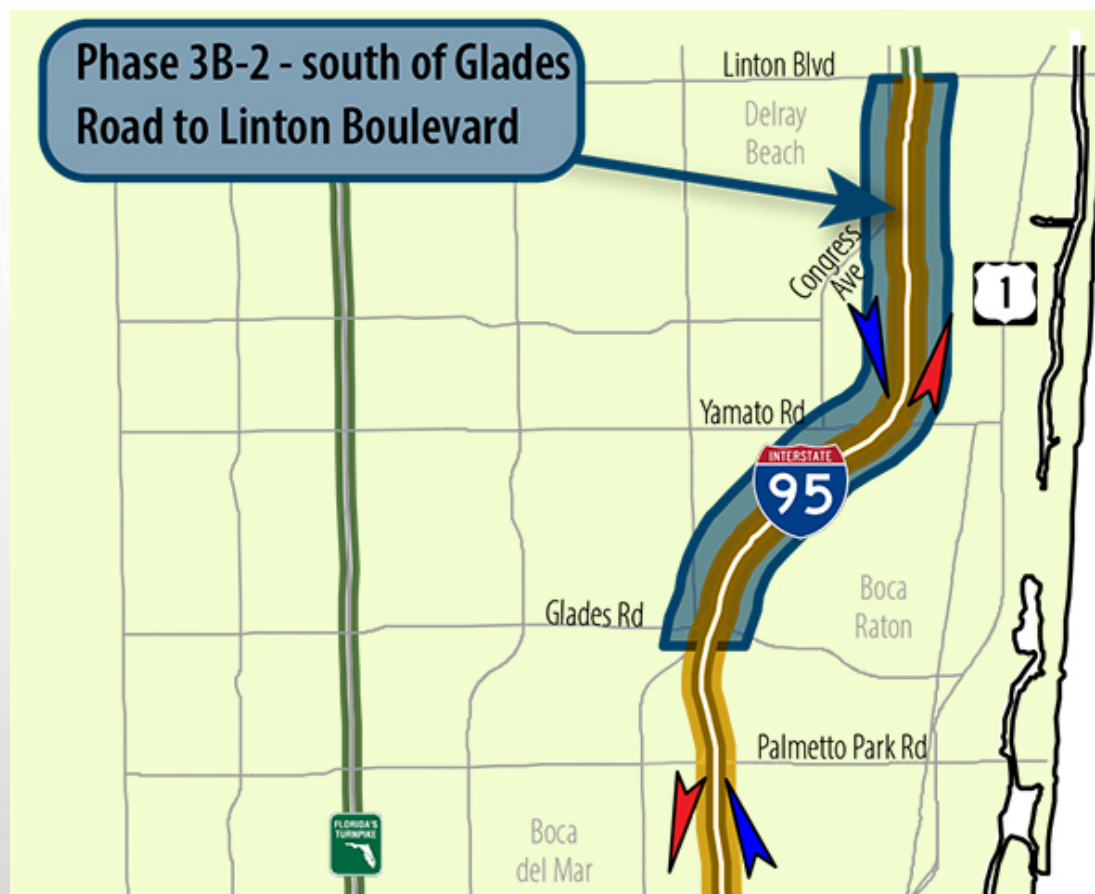
Segmentation into  
Two Separate  
Projects:

**3B-1:** South of SW  
10<sup>th</sup> St. to South of  
Glades Road (April  
2017 Letting)



# PHASE 3B-2 PROJECT LIMITS

**3B-2:** South of  
Glades Road to  
Linton Boulevard  
(FY 2019 Letting)



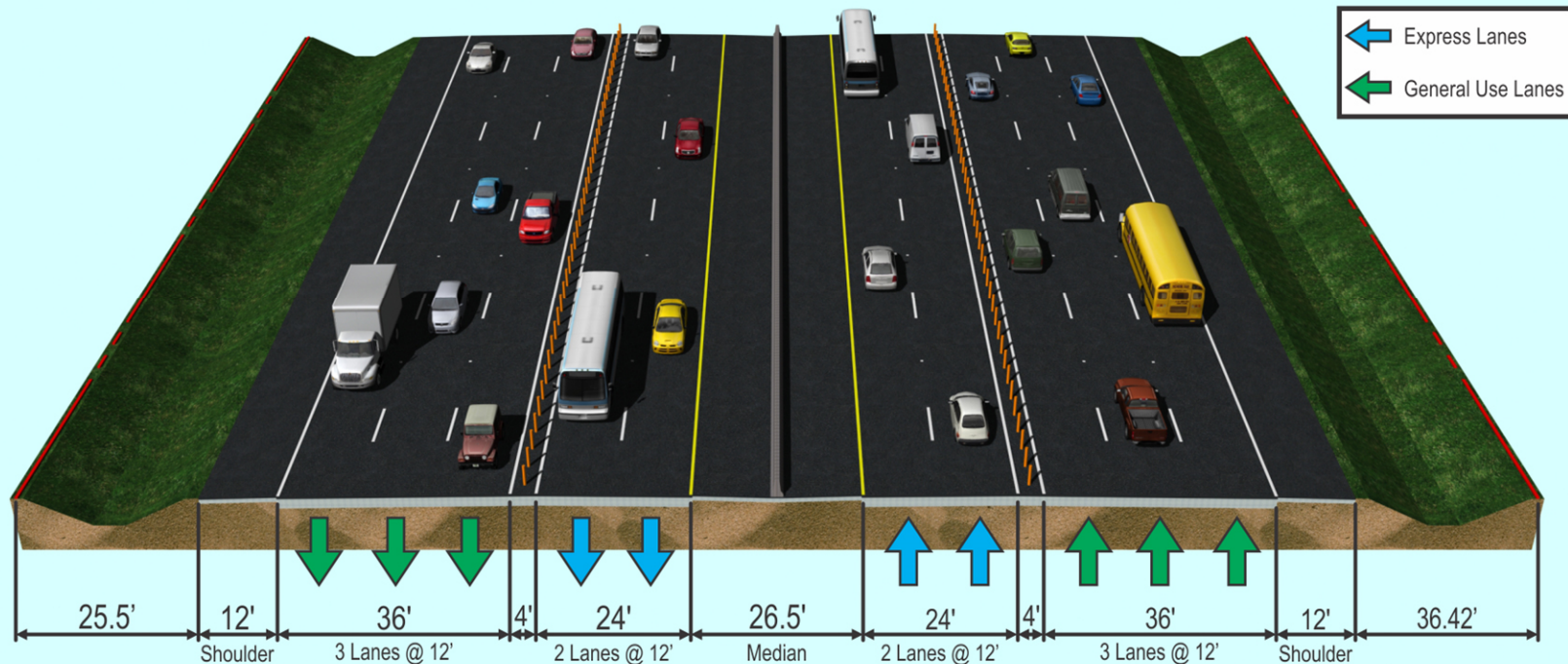


# SUMMARY SCOPE OF PLANNED IMPROVEMENTS



# ROADWAY TYPICAL SECTION

## Typical Section - 3 GP Lanes



- Convert Existing HOV Lanes to Tolloed Express Lanes
- Add One Additional Tolloed Express Lane in Each Direction with ~14' Widening
- Existing General Purpose Lanes to Remain

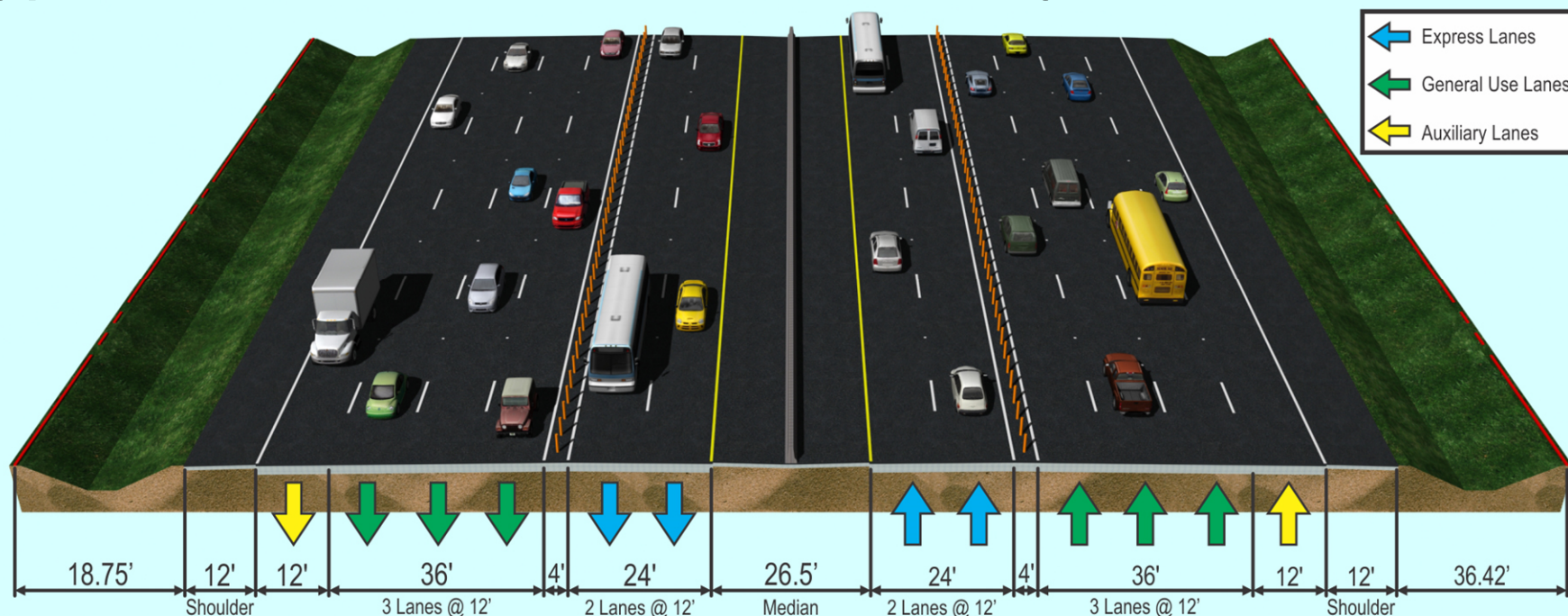
### Limits are:

- S. of SW 10<sup>th</sup> Street to N. of Hillsboro Boulevard
- S. of SW 18<sup>th</sup> Street to Palmetto Park Road



# ROADWAY TYPICAL SECTION

## Typical Section - 3 GP Lanes with Auxiliary Lanes



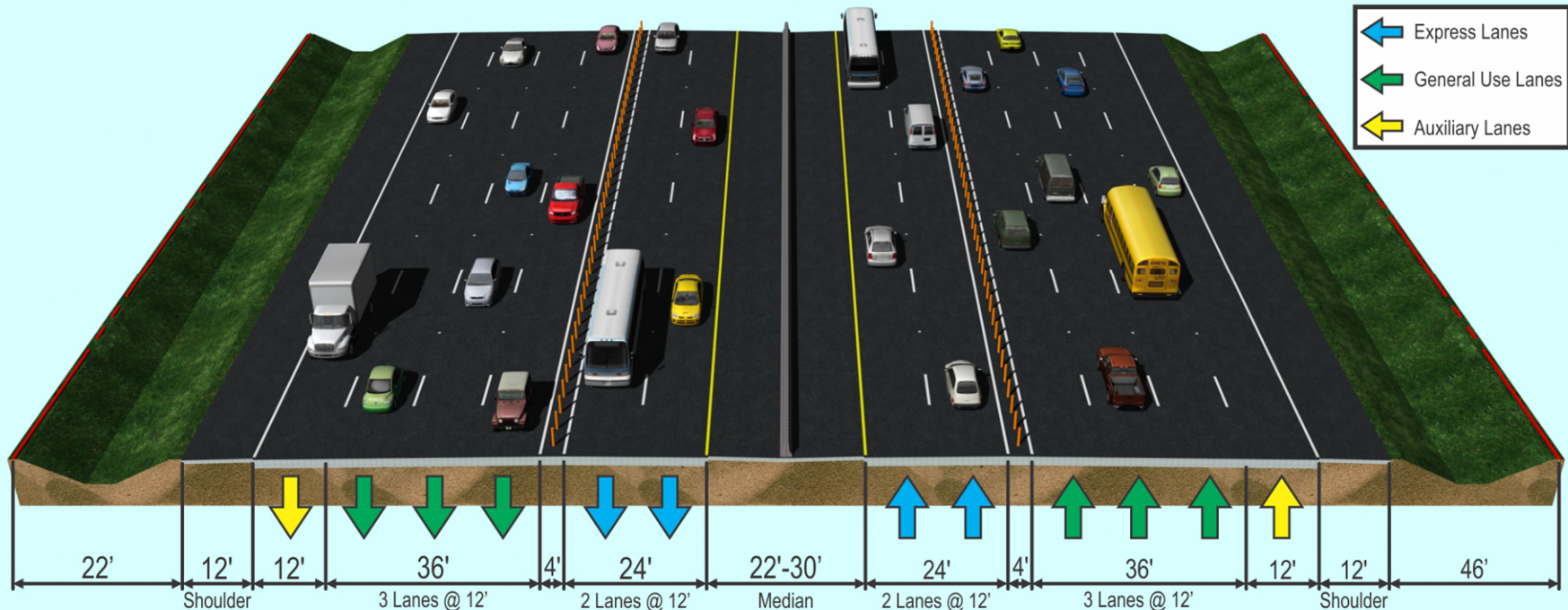
- Convert Existing HOV Lanes to Tolloed Express Lanes
- Adds One Additional Tolloed Express Lane in Each Direction
- Existing General Purpose and Auxiliary Lanes to Remain

### Limits are:

- N. of Hillsboro Boulevard to S. of SW 18<sup>th</sup> Street (Reconstruction)
- Palmetto Park Road to Glades Road (Approx. 14' Widening)

# ROADWAY TYPICAL SECTION

## Typical Section - 3 GP Lanes with Auxiliary Lanes



- Convert Existing HOV Lanes to Tolloed Express Lanes
- Adds One Additional Tolloed Express Lane in Each Direction with ~ 2' Widening
- Existing General Purpose and Auxiliary Lanes to Remain

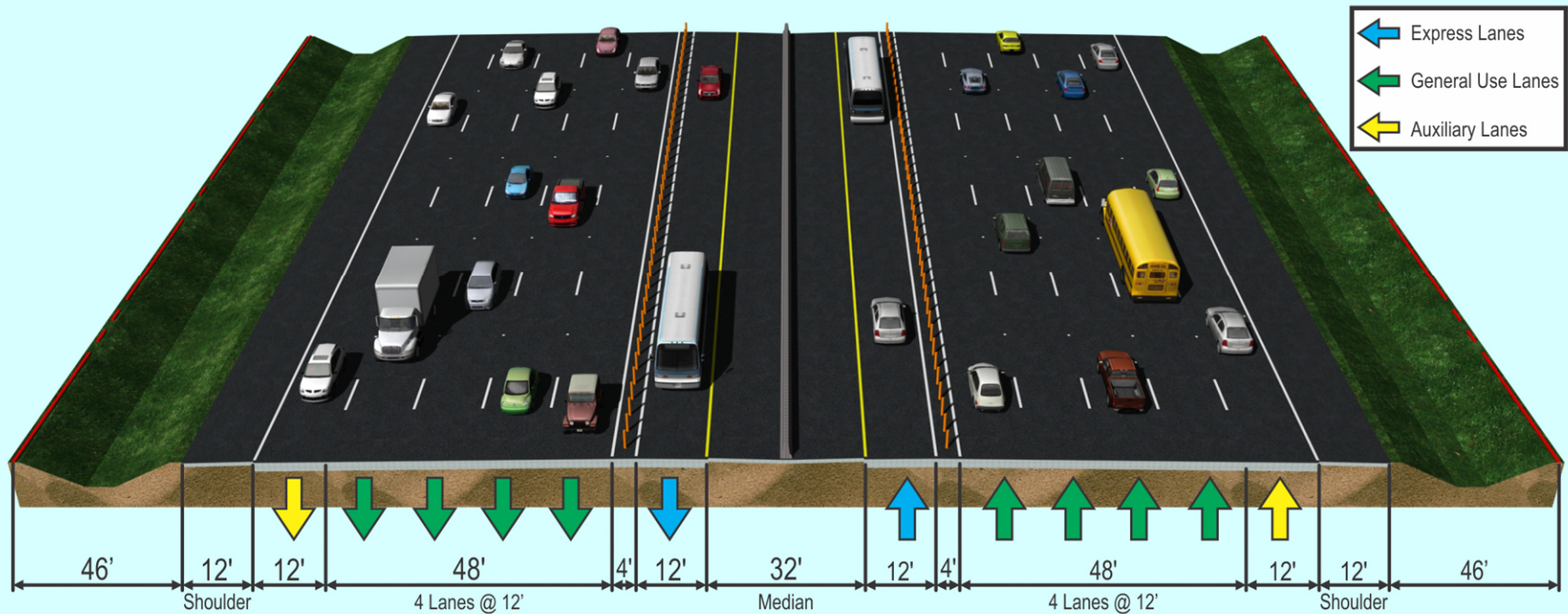
### Limits are:

- Glades Road to Congress Avenue (Spanish River Blvd. Interchange Limits)



# ROADWAY TYPICAL SECTION

## Typical Section - 4 GP Lanes with Auxiliary Lanes



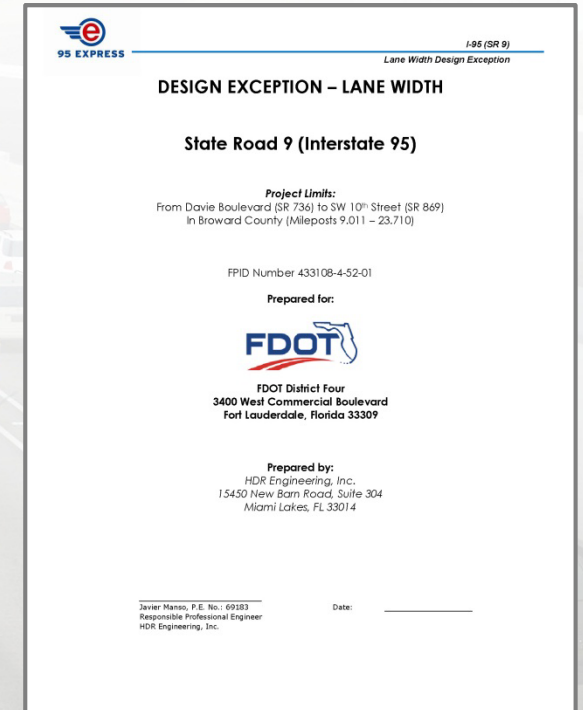
- Convert Existing HOV Lanes to Tolled Express Lanes (minor variable width widening only)
- Existing General Purpose Lanes and Auxiliary Lanes to Remain

Limits are:

- Congress Avenue to Linton Boulevard

# DESIGN EXCEPTIONS/VARIATIONS

Design Element	Design Variation	Design Exception
Lane Width	N/A	N/A
Median Width	X	
Shoulder Width	X	
Border Width	X	
Bridge Width	N/A	N/A
Vertical Clearance	X	X
Cross Slope	X	
Superelevation Transition Length	X	
Horizontal Alignment	X	
Vertical Alignment	X	
Horizontal Stopping Sight Distance (Express Lanes Markers)	X	X
Horizontal Clearance	N/A	N/A



**95 EXPRESS** I-95 (SR 9)  
Lane Width Design Exception

**DESIGN EXCEPTION – LANE WIDTH**

**State Road 9 (Interstate 95)**

*Project Limits:*  
From Davis Boulevard (SR 736) to SW 10th Street (SR 869)  
in Broward County (Mileposts 9.011 – 23.710)

FPID Number 433108-4-52-01

Prepared for:

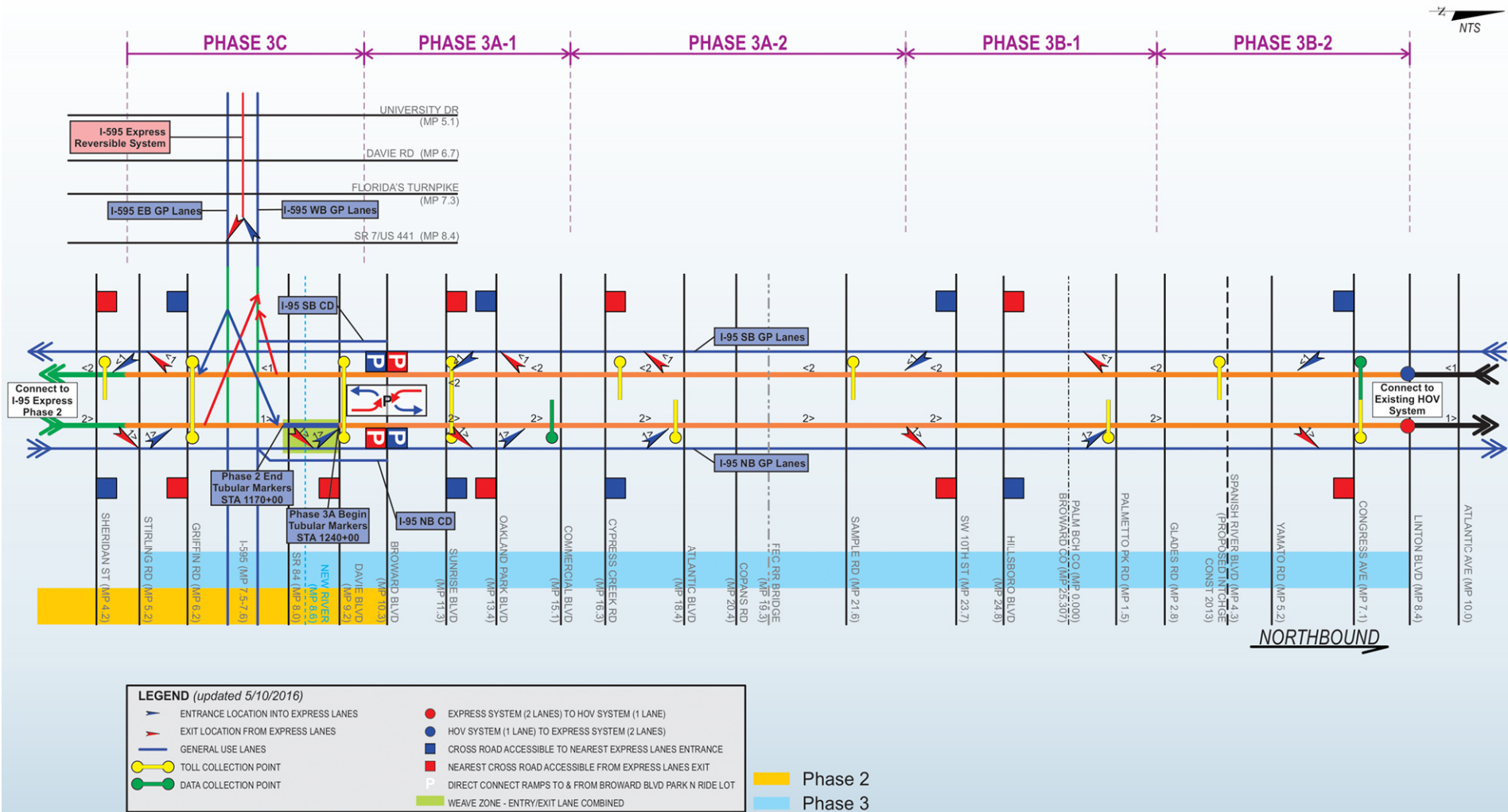
**FDOT**  
FDOT District Four  
3400 West Commercial Boulevard  
Fort Lauderdale, Florida 33309

Prepared by:  
HDR Engineering, Inc.  
15450 New Barn Road, Suite 304  
Miami Lakes, FL 33014

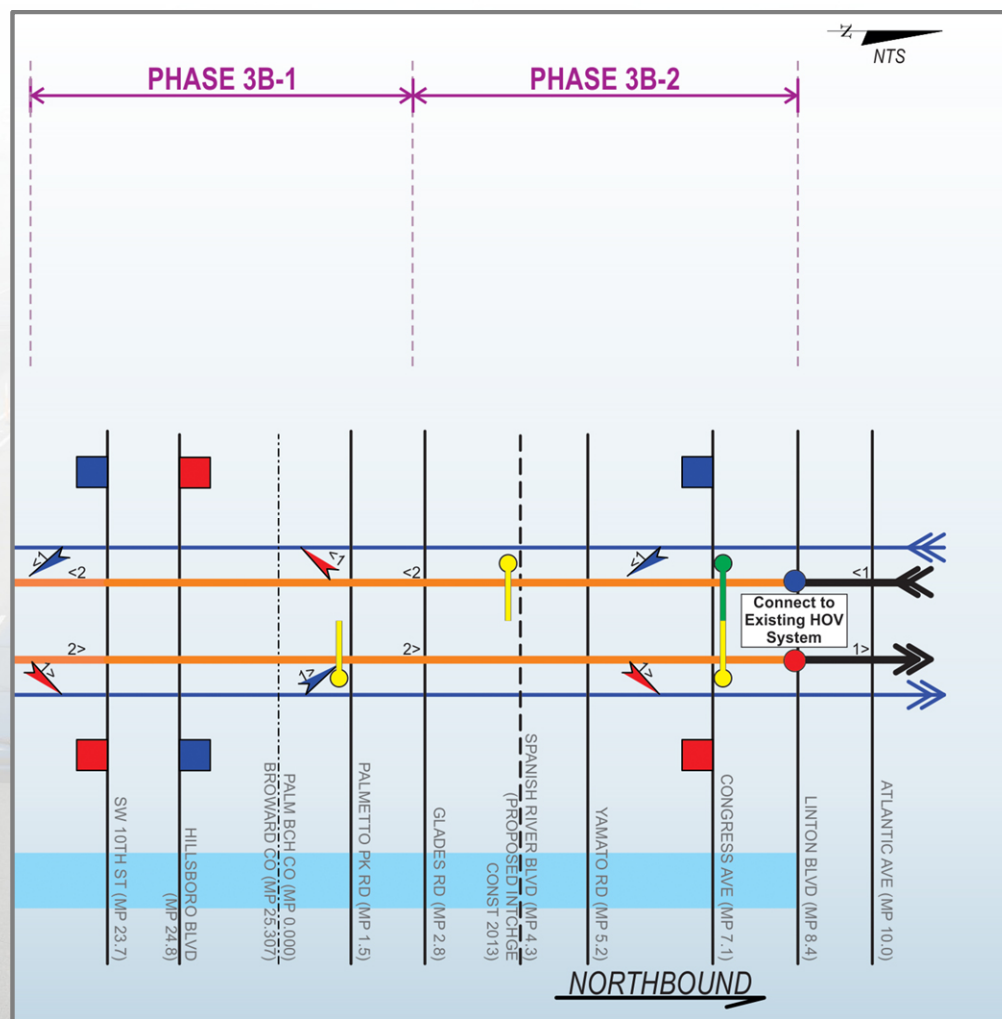
Javier Manao, P.E. No.: 69283  
Responsible Professional Engineer  
HDR Engineering, Inc. Date: \_\_\_\_\_



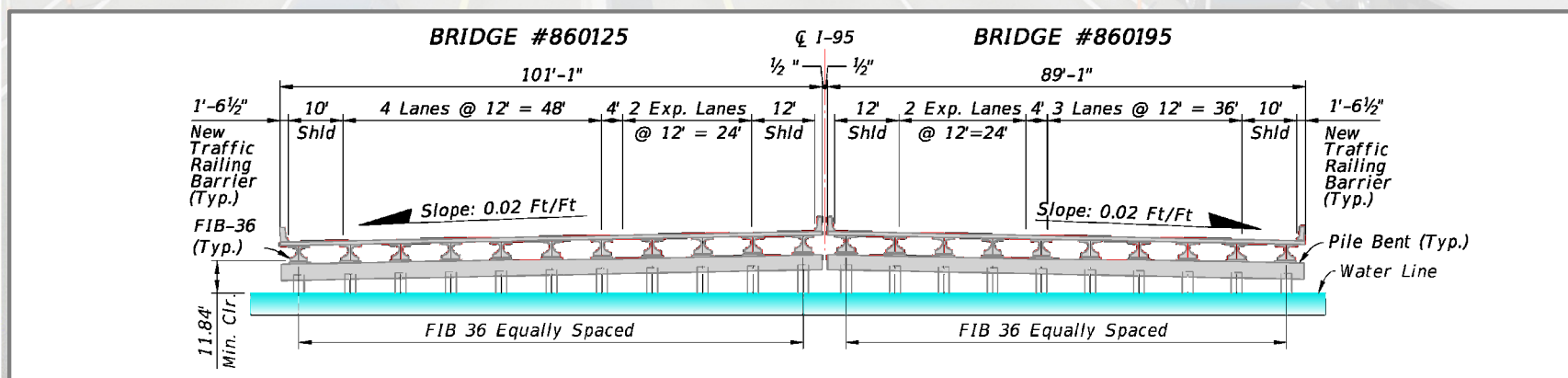
# INGRESS/EGRESS LOCATIONS



# PHASE 3B INGRESS/EGRESS

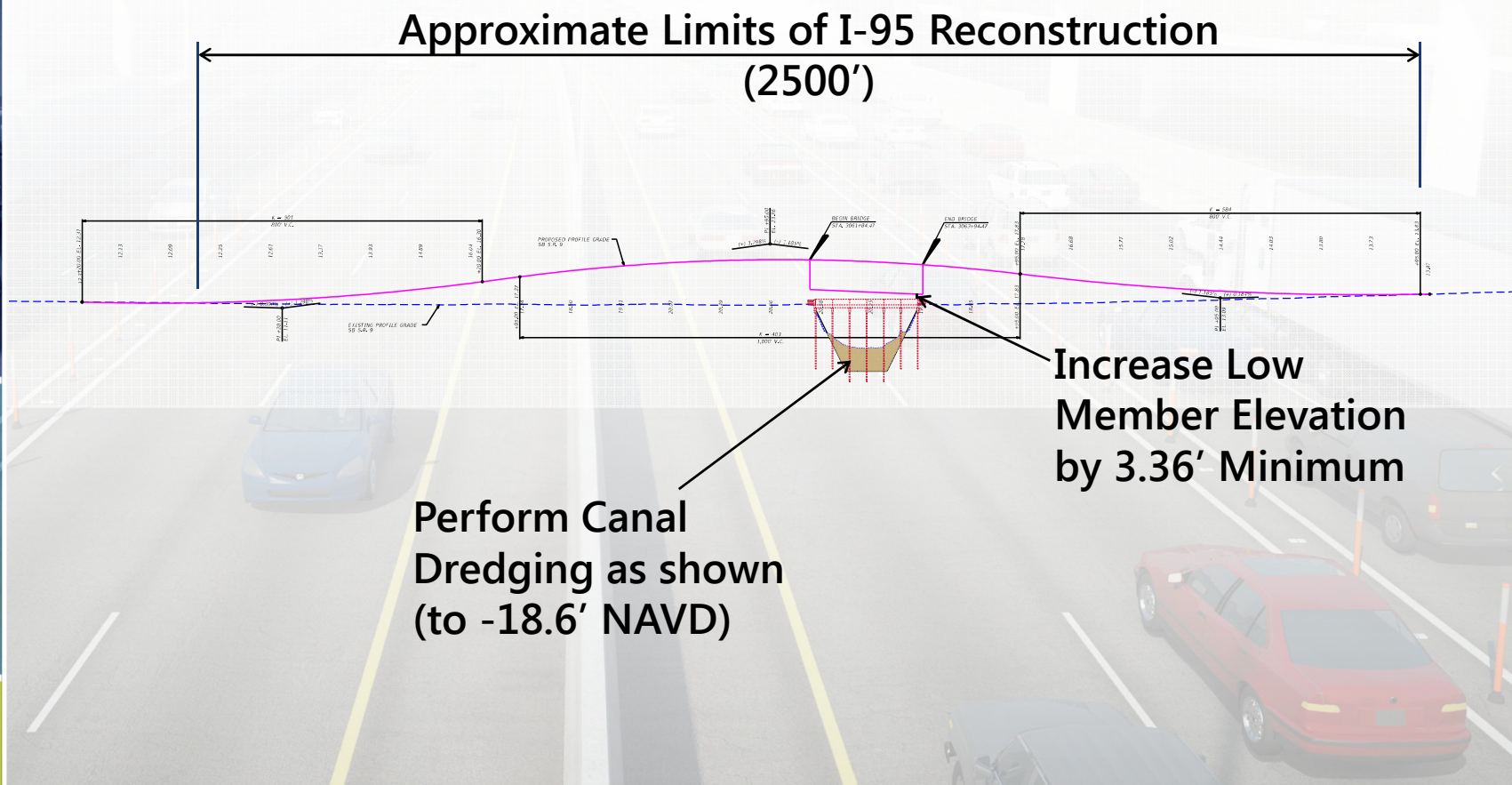


# 3B-1: HILLSBORO CANAL BRIDGE

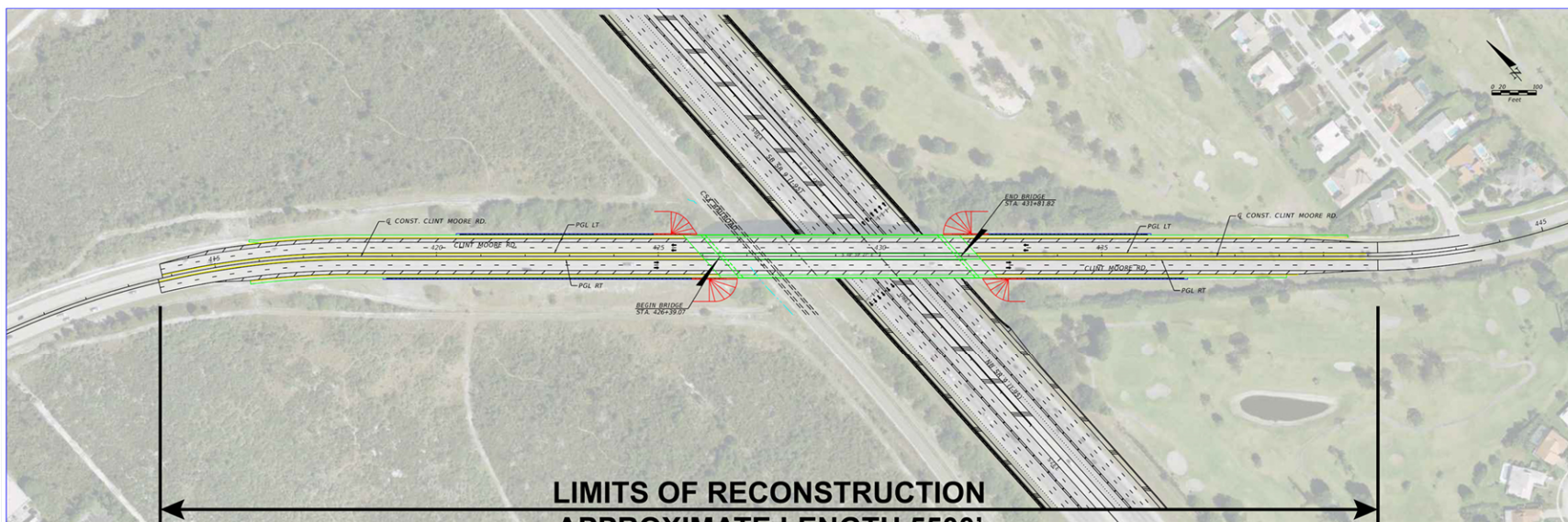




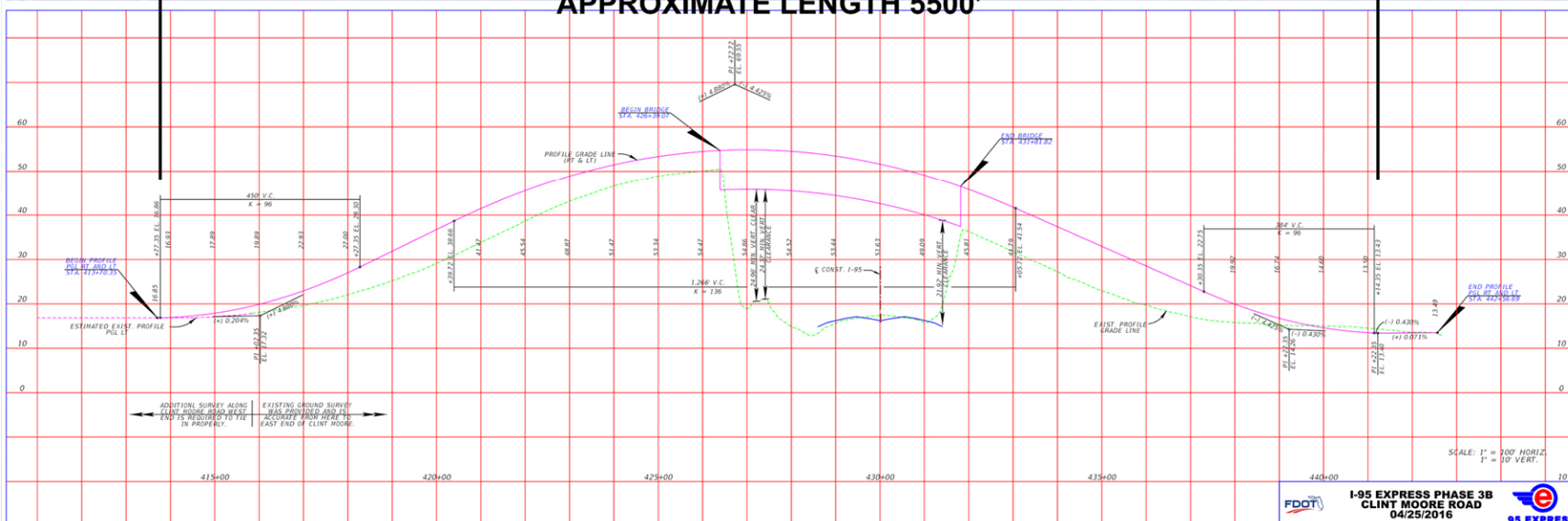
# 3B-1: HILLSBORO CANAL BRIDGE



# 3B-2: CLINT MOORE BRIDGE OVERPASS



**LIMITS OF RECONSTRUCTION  
APPROXIMATE LENGTH 5500'**





# ITS

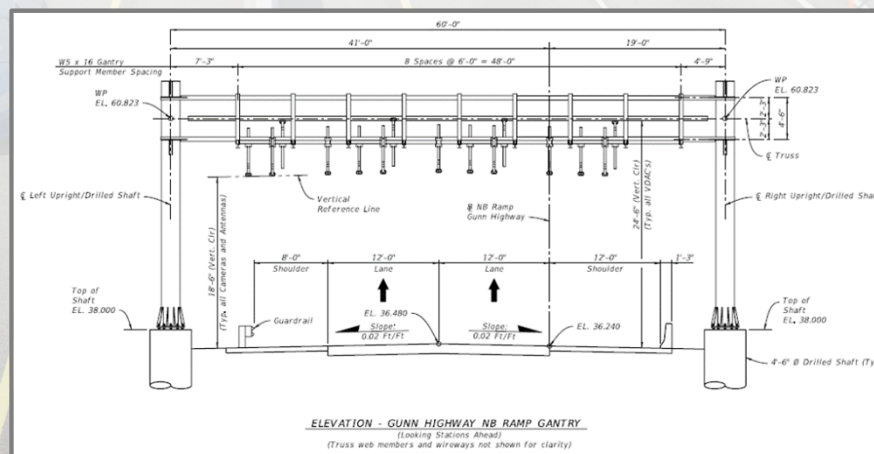
- Maintain and Upgrade Existing ITS Devices,
- Proposed 144-Count Fiber Optic Backbone Cables on the SB Side of I-95
- DMS Subsystem, Including Toll Amount and Lane Status DMS
- CCTV Camera Subsystem
- MVDS Subsystem
- Power Distribution Subsystem
- System Integration and FTE Coordination





# TOLLING

- Phase 3B-1 Broward County: 0 tolling points
- Phase 3B-1 Palm Beach County: 1 uni-directional
- Phase 3B-2: 1 uni-directional, 1 bi-directional
- Non-Accessible Toll Gantries
- Turnpike General Tolling Requirements



# RAMP SIGNALING

- Operational Technique to Control the Rate of Traffic Entering an Expressway
- Improves the Flow of Traffic Entering the Mainline While Avoiding Lengthy Backups on the Entrance Ramps and Cross-Streets
- SW 10<sup>th</sup> St to Linton Blvd. with 3B-1 and 3B-2 projects





# RAMP SIGNALING

## Phase 3B

- SW 10 St.
- Hillsboro Blvd.
- Palmetto Park Rd.
- Glades Rd.
- Yamato Rd.
- Spanish River
- Congress Ave.
- Linton Blvd.



**\*Ramp Signals  
Operational in Miami**



# LIGHTING

- System Upgrades to Meet FDOT Lighting Standards
- Proposed Roadside Shoulder and Wall Mounted Light Poles
- Existing Median Barrier-Mounted Light Poles to Remain
- LED Lighting Retrofit for I-95 Mainline, supplemented as needed with outside lighting



# STRUCTURES

- Phase 3B-1
  - 6 Mainline Bridge Widening
  - Two Mainline I-95 Bridge Replacements (Hillsboro Canal)
- Phase 3B-2
  - 3 Mainline or Ramp Bridge Widening
  - One Cross Street Overpass Bridge Replacement (Clint Moore Road) and one widening (Glades Road)
- Retaining Walls
- OH Sign Structures
- OH Tolling Gantries



Phase 3B Bridge Widening's	
Phase	Approx. Widening Area (SF)
3B-1	17,000
3B-2	6,000



# STRUCTURES

- Phase 3B-1:
  - 24 Cantilever Sign Structures
  - 6 Overhead ITS Structures
  - 1 Truss DMS Structure
  - 1 cantilever DMS Structures
  - 1 Toll Gantry Structure
- Phase 3B-2:
  - 11 Cantilever Sign Structures
  - 10 Overhead ITS Structures
  - 3 Truss DMS Structures
  - 2 Toll Gantry Structures





# PROPOSED 3B NOISE WALLS

- Phase 3B-1:
  - ~6,870 Linear Feet of Ground Mounted
  - ~4,889 Linear Feet of Shoulder Mounted
- Phase 3B-2:
  - ~825 Linear Feet of Ground Mounted
  - ~1,959 Linear Feet of Shoulder Mounted



# PHASE 3B-1 PROPOSED SOUND BARRIER WALLS

Phase 3B-1 Sound Barrier Walls			
Location Number	Type of Sound Barrier Wall	Approximate Length	Adjacent Community
1	22' Tall Ground Mounted	4,305	Tivoli Park and Natura
2	8' Tall Shoulder Mounted	615	Palm Beach Farms
3	20' Tall Ground Mounted	1,335	Mizner Forest
4	8' Tall Shoulder Mounted	2,668	Raintree, Boca Raton Square, and Palmetto Park West
5	8' Tall Shoulder Mounted	1,294	Raintree, Boca Raton Square, and Palmetto Park West
6	22' Tall Ground Mounted	1,230	Fairfield Gardens
7	8' Tall Shoulder Mounted	312	Country Club Village

# PHASE 3B-2 PROPOSED SOUND BARRIER WALLS

Phase 3B-2 Sound Barrier Walls			
Location Number	Type of Sound Barrier Wall	Approximate Length	Adjacent Community
8	8' Tall Shoulder Mounted	450	Hidden Valley and Tropic Palms
9	14' Tall Shoulder Mounted	1,509	Bahia Delray and Tierra Verde
10	22' Ground Mounted	825	Tierra Verde

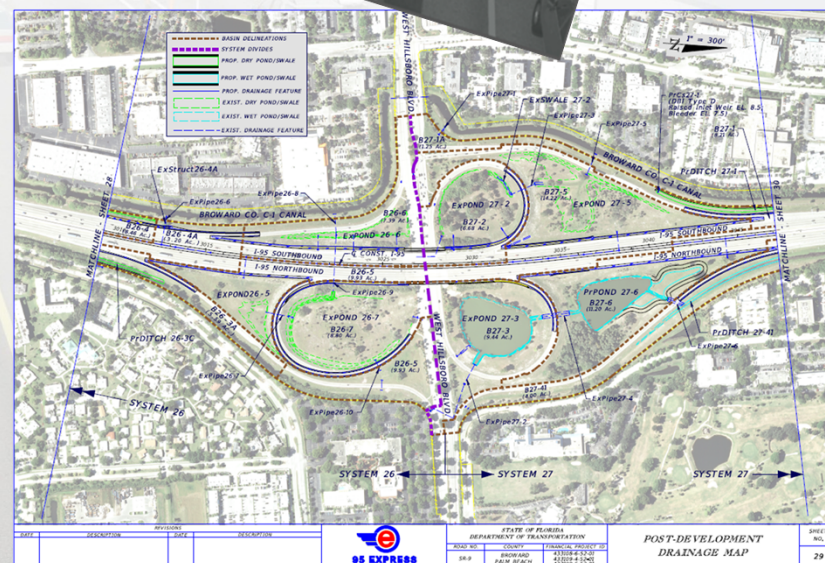


# AESTHETIC REQUIREMENTS

- Bridge Widening's Along I-95
  - Pier Column Shapes Shall Match the Shape of the Existing Bridge Columns
  - Substructure Type and Material Shall Remain Constant Over the Entire Length of the Widened Bridges.
- Sound Barriers
- Retaining Walls
  - Shall Match Existing Walls in Type and Color

# DRAINAGE

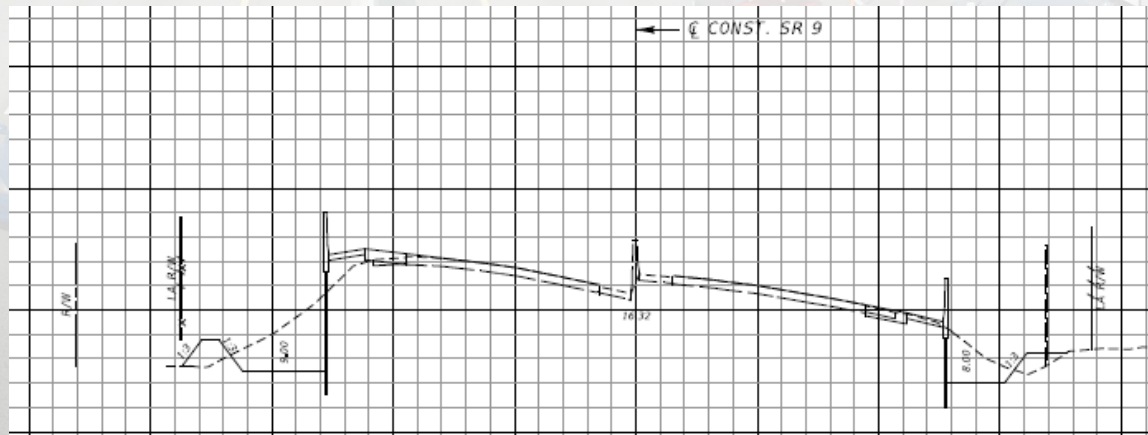
- Stormwater Management Facilities
  - Linear dry detention and retention ponds (onsite swales)
  - Dry and wet detention ponds (infield ponds)
  - New/modified control structures and outfall pipe retrofits
  - Avoid Landscape Opportunity areas





# DRAINAGE

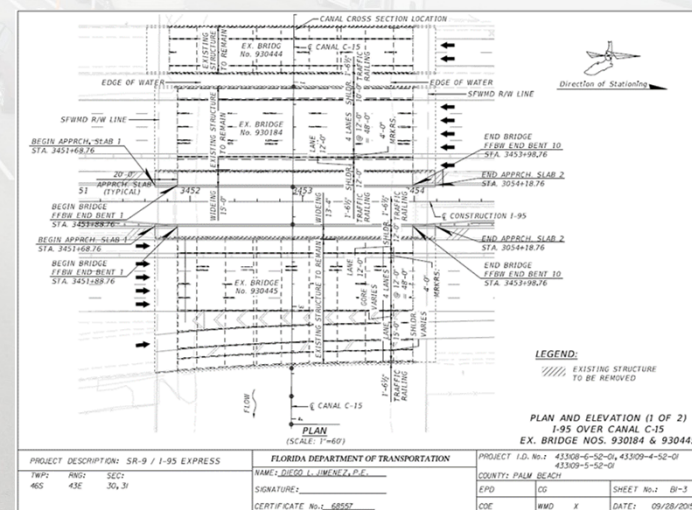
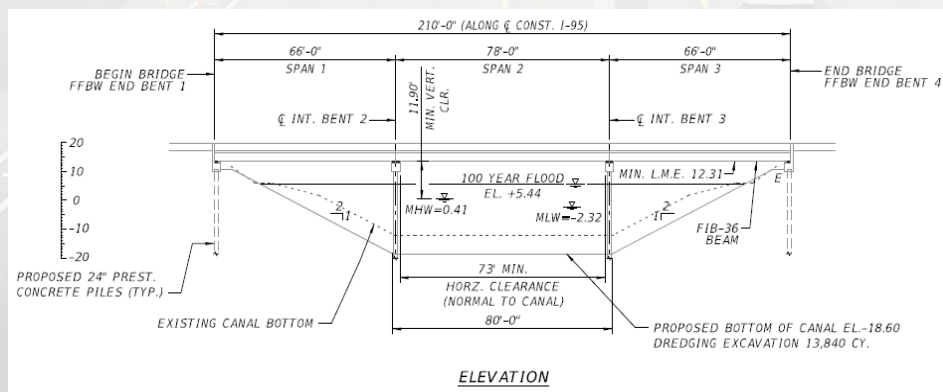
- Drainage Collection and Conveyance Systems
  - Modifications to closed drainage systems required in median to accommodate shift in crown point
  - New closed drainage systems required along outsides in barrier wall and guardrail/shoulder gutter sections
  - MSE wall drainage and culvert extensions required, as well as accommodation of bridge deck runoff





# DRAINAGE

- Canal Dredging and Bridge Hydraulics
  - Canal dredging in Hillsboro Canal (3B-1) and C-15 Canal (3B-2) per ongoing SFWMD Right-of-Way Occupancy Permitting and USCG Bridge Permitting



# ENVIRONMENTAL

- T&E Species

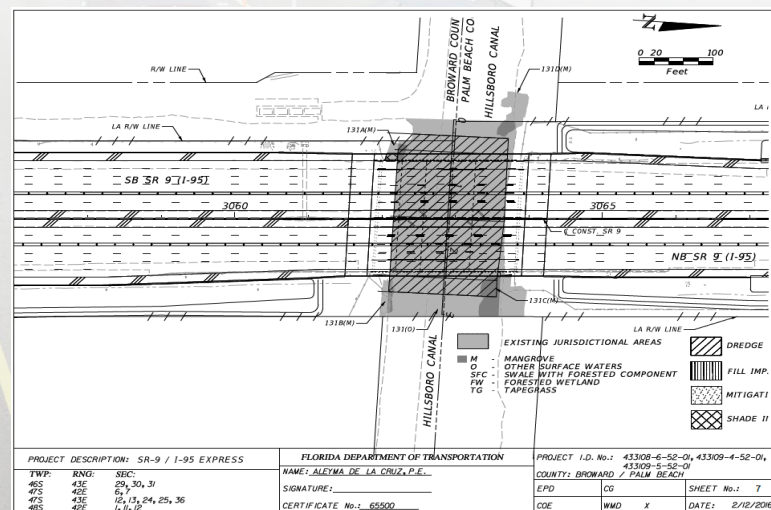
- Endangered Species Biological Assessment Report (ESBA) and Wetland Evaluation Report (WER) prepared during the PD&E Study
  - Coordination conducted with FWS and NMFS for wood stork, gopher tortoise, burrowing owl, scrub jay, manatee, and indigo snake during PD&E Study
  - Gopher tortoise relocation underway near Blazing Star Preserve
- Consultations to be Initiated for Smalltooth Sawfish as Part of the USACE Section 404 Dredge-Fill Permitting





# ENVIRONMENTAL

- Wetlands & Mitigation
  - Jurisdictional Wetland Survey, Environmental Assessments, and Wetland Impact and Mitigation Assessment Completed
  - Existing Credits from West Lake Park to be used for Mitigation of Wetland Impacts to Mangroves (3B-1 for Hillsboro Canal Bridge)





# PERMITTING

- Department Planning to Submit Permit Applications in June 2016, following approval of permit modifications being submitted by Spanish River DBF in May 2016
  - SFWMD Individual Conceptual ERP
  - SFWMD ROW Occupancy Permit(s)
  - USACE Section 404 Dredge & Fill Permit
  - USACE Section 408 Approval(s)
  - USCG Bridge Permit
  - Permits complete anticipated prior to Price Proposal submittal date
- *SFWMD Water Use (Dewatering) Master Permit(s) in Place for FDOT District 4 Projects*



# PERMITTING

- DB Firm Responsible for Obtaining Following Permits per Phase(s):
  - NPDES Construction Generic Permit(s)
  - SFWMD Standard General Construction ERP(s)
  - Modifications to SFWMD, USACE, and USCG Permits due to Final Design and/or Construction Changes, including Special Conditions Documentation in Support of SFWMD Master Dewatering Permit Requirements





# LANDSCAPE

- Department to Provide the Following:
  - Tree Inventory for Phase 3 limits
  - Landscape Opportunity Plans Illustrating Areas to be Preserved for Future Landscape Opportunities and Tree Relocation Plans Illustrating Locations Where Existing Trees Could Potentially be Relocated Within Project Limits
  - RFP Documentation on Types and Locations for Trees to be Relocated Outside of Project Limits
- DB Firm Responsible for:
  - Tree Relocation Plans and Landscape Opportunity Plan
  - Relocation of Suitable Native Trees Impacted by Construction:
    - Screening Sound Barriers and Industrial Areas
    - Specified Locations Within the Adjacent Municipalities



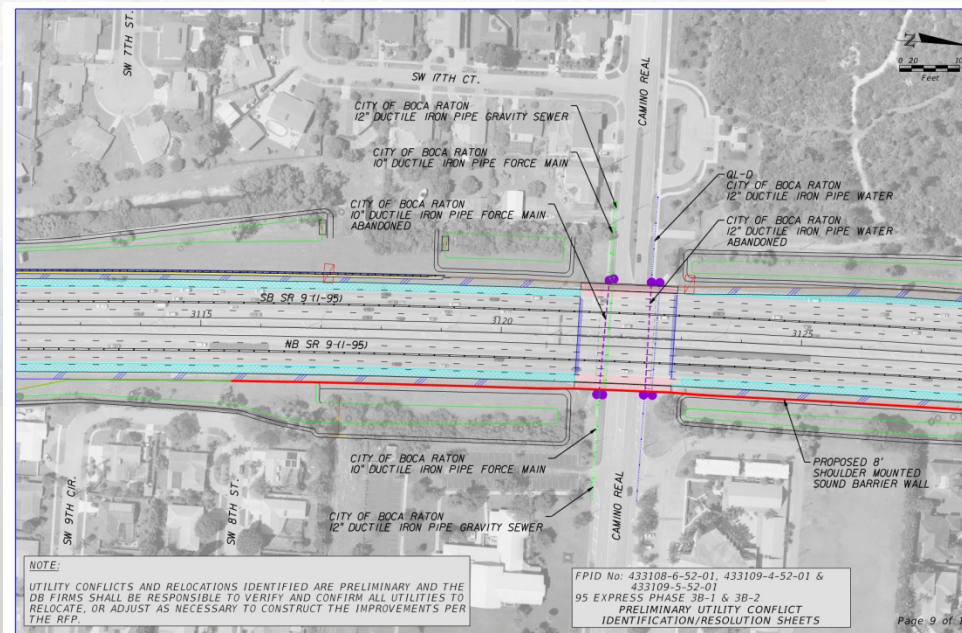


# UTILITY COORDINATION

- Department Coordinating with UAOs for Phase 3B:
  - UAO Design Costs
  - Utility Relocation Costs
  - Subsurface Utility Engineering
  - UAO Phase 36 Funding
- Streamlining Utility Coordination for DB Firms by Advancing UAO Utility Design Efforts for Unavoidable Utility Relocations
- DB Firm Responsible for All Costs Related to Utility Coordination and Utility Relocations

# UTILITY COORDINATION

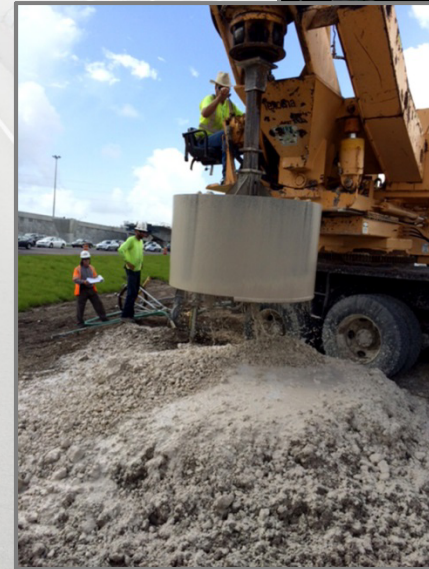
- Department Preparing the Following Items for Phase 3B Projects:
  - Utility Base Map
  - Preliminary Utility Conflict Matrix





# GEOTECHNICAL

- Department Prepared the Following:
  - Geotechnical Report (PD&E Study)
  - Additional Geotechnical Investigation Underway
    - Roadway
    - Drainage
    - Bridges
    - Retaining Walls
    - Sound Barriers
- DB Firm Responsible for all Other Geotechnical Investigations





# SURVEY



- Department Prepared the Following:
  - Controlled Rasters (Aerials)
  - Alignment and Right-of-Way Survey
  - Aerial Planimetrics (Topo and DTM) for I-95 Mainline and Side-Streets
  - Supplemental Ground Topo and DTM Within Some Obstructed Areas (e.g. below bridges, and adjacent to sound barriers and landscape areas)
  - Bathymetric Survey and DTM Within Canal Crossings
  - Subsurface Utility Engineering
- DB Firm responsible for:
  - Full Design Survey
  - Existing Drainage Survey
  - Supplemental Topo and DTM in Obstructed Areas
  - Supplemental Subsurface Utility Engineering

# PUBLIC OUTREACH

- Recent and Ongoing Outreach Efforts:
  - Elected Official Briefings
  - Late Summer 2016 Public Meeting
- DB Firm Responsible for Ongoing Support to FDOT Public Information Officer for:
  - Community Awareness Plan
  - Public Meetings/Workshops
  - Technical Assistance/Display Materials





# MAINTENANCE AND INCIDENT MANAGEMENT

DB Firm Responsible for:

- Routine Maintenance Activities, From Right-of-Way to Right-of-Way, for Project Length
- Long-Term Maintenance of Traffic (> 60 mins.) Associated with Incidents



# PROCUREMENT PROCESS AND SCHEDULE



## 3B-1 D-B PROCUREMENT PROCESS

- Standard FDOT Two-Phase D-B Approach
- Phase I – Expanded Letter of Interest
- Phase II – Technical Proposal
  - Alternative Technical Concept (ATC) Meetings
  - Page Turn Meeting
  - Question & Answer Session
- Price Proposal
- Final Selection Formula (adjusted score)
  - Bid Price Proposal/Technical Score

# D-B PROCUREMENT PROCESS

- Phase I – Expanded Letter of Interest

1. Design-Build Firm Name and Prequalifications
2. Past Performance Evaluations, Design-Build Project Experience, Organization, and Staffing: **(0-7 Points)**
3. Design-Build Project Requirements and Critical Issues: **(0-13 Points)**



# D-B PROCUREMENT PROCESS

- Phase I – Expanded Letter of Interest

## 2. Past Performance Evaluations, Design-Build Project Experience, Organization, and Staffing: **(0-7 Points)**

- Contractor and Consultant Grades
- Similar Experience
- Performance history with Other States
- Environmental Record
- Organization/Staffing/Coordination Plans

# D-B PROCUREMENT PROCESS

- Phase I – Expanded Letter of Interest

## 3. Design-Build Project Requirements and Critical Issues: (0-13 Points)

- Understanding of DB Requirements
- Identification of Critical Issues
- Outline for Addressing Critical Issues

# D-B PROCUREMENT PROCESS

- Technical Review Committee (3B-1)
  - Antonio Castro, PE
  - Richard Creed, PE
  - Paul Lampley, PE
  - Anson Sonnett, PE



# ENGINEERING DATA TO BE MADE AVAILABLE WITH FINAL DRAFT RFP

- Electronic Survey Data
- Existing Utilities Base Map and Potential Conflict Matrix
- Concept Plans
- Typical Section Package
- Pavement Design Report
- Design Exceptions and Variations
- Right-of-Way Maps
- Master Signing, ITS and Lighting Plans
- Lighting Analysis Report
- Landscape Concept Design
- Geotechnical Reports
- SFWMD Individual (Conceptual) ERP Application
- SFWMD Standard Right of Way Occupancy Permit(s) Application
- SFWMD Water Use Permit (Master Dewatering) Applic.
- USACE Section 404 Dredge & Fill Permit Application
- USCG Bridge Permit Applic.
- Conceptual Drainage Report
- Bridge Hydraulics Report
- Cross Drain Report
- Sound Barrier and Retaining Wall Requirements and Locations

# DISTRICT 4 - 95 EXPRESS KEY CONSTRUCTION OBJECTIVES

- Corridor Continuity and Functionality
  - Coordination and Compatibility Between Adjacent Projects (including ITS, Signing, Roadway, and MOT continuity)
  - Compliance with all PD&E Commitments
  - Expedited Construction of Sound Barrier Walls
  - Expedite Work on Cross-Streets and Interchanges with I-95 bridge widening
  - Early opening of Express Lanes and available for Tolling

# PHASE 3B-1 DESIGN-BUILD PROCUREMENT SCHEDULE

Procurement Activity	Milestone Date
Planned Advertisement (with Draft RFP)	May 09, 2016
Advertisement	June 20, 2016
Expanded Letters of Interest Due	July 12, 2016
Shortlist Posting	August 25, 2016
Final Draft RFP Provided to D-B Firms	September 01, 2016
Technical Proposals Due	January 30, 2017
Price Proposals Due	April 12, 2017
Anticipated Award Date	May 08, 2017
Anticipated Execution Date	May 25, 2017



# CEI PROCUREMENT SCHEDULE

- Phase 3B-1 and 3B-2 (One Contract)
  - Advertisement Start: September 05, 2016
  - Advertisement Close : September 19, 2016
  - Shortlist: October 10, 2016
  - Final Selection: October 31, 2016
  - NTP: February 2017

## NEXT STEPS

# NEXT STEPS

- One-on-One Meetings – May 19, 2016  
@ D4 Headquarters
  - D4 Management Team – Discuss D4 and DB Firm Questions/Issues
  - Technical Review Committee (TRC)
- 3B-1 DB Advertisement: 06/20/2016
- 3B-2 DB Advertisement: TBD



# PROJECT CONTACTS

- Before Advertisement:  
Vanita Saini, PE  
Project Manager  
Office: (954) 777-4468  
E-mail: [Vanita.Saini@dot.state.fl.us](mailto:Vanita.Saini@dot.state.fl.us)
- After Advertisement:  
Kendrick Jackson  
Procurement Officer  
Office: (954) 777-4084  
E-mail: [Kendrick.Jackson@dot.state.fl.us](mailto:Kendrick.Jackson@dot.state.fl.us)

# PROJECT WEBSITE

- Go to Website for Updates on Segmentation, Concepts, Presentations, Reports, etc.

[www.95express.com/phase3](http://www.95express.com/phase3)



The screenshot shows the official website for the 95 Express Phase 3 project. The header includes the 95 Express logo, navigation links (Home, A A A, Sitemap, Español, Kreydi), a search bar, and the Florida Department of Transportation (FDOT) logo. The main content area is titled "95 Express Phase 3" and features a map of the project corridor. The map is color-coded to show different project segments: Phase 3B-1 (south of Glades Rd. to Linton Blvd., construction begins in 2016), Phase 3B-2 (south of SW 10th St. to south of Glades Rd., construction begins in 2018), and Phase 3A-1 (south of Glades Rd. to Linton Blvd., construction begins in 2020). A sidebar on the left lists "Related Links" such as Transportation Management Center, Public Meetings, Reports & Survey Results, Ramp Signaling, and South Florida Express Lanes Network. To the right of the map, there is a section titled "Join us for the 95 Express Phase 3B-1 Industry Forum" with a link to register. Below the map, a detailed text block explains the project's purpose, the Florida Department of Transportation's (FDOT) role, and the specific construction segments and their timelines.

# QUESTIONS

