



# 95 EXPRESS PHASE 3

Broward & Palm Beach Counties  
From Stirling Road to Linton Boulevard



## 95 Express Phase 3C Public Workshop

November 8, 2017

# PRESENTATION OUTLINE

- Regional Express Lanes Network
- Purpose/Benefits of Express Lanes
- 95 Express Phase 3C Project Video and Overview
- 95 Express Phase 3C Schedule



# SOUTH FLORIDA REGIONAL EXPRESS LANES NETWORK



# PURPOSE / BENEFITS OF EXPRESS LANES

- Improve Mobility
  - Provide additional capacity/throughput
- Relieve Congestion
  - More reliable travel times

# PURPOSE / BENEFITS OF EXPRESS LANES

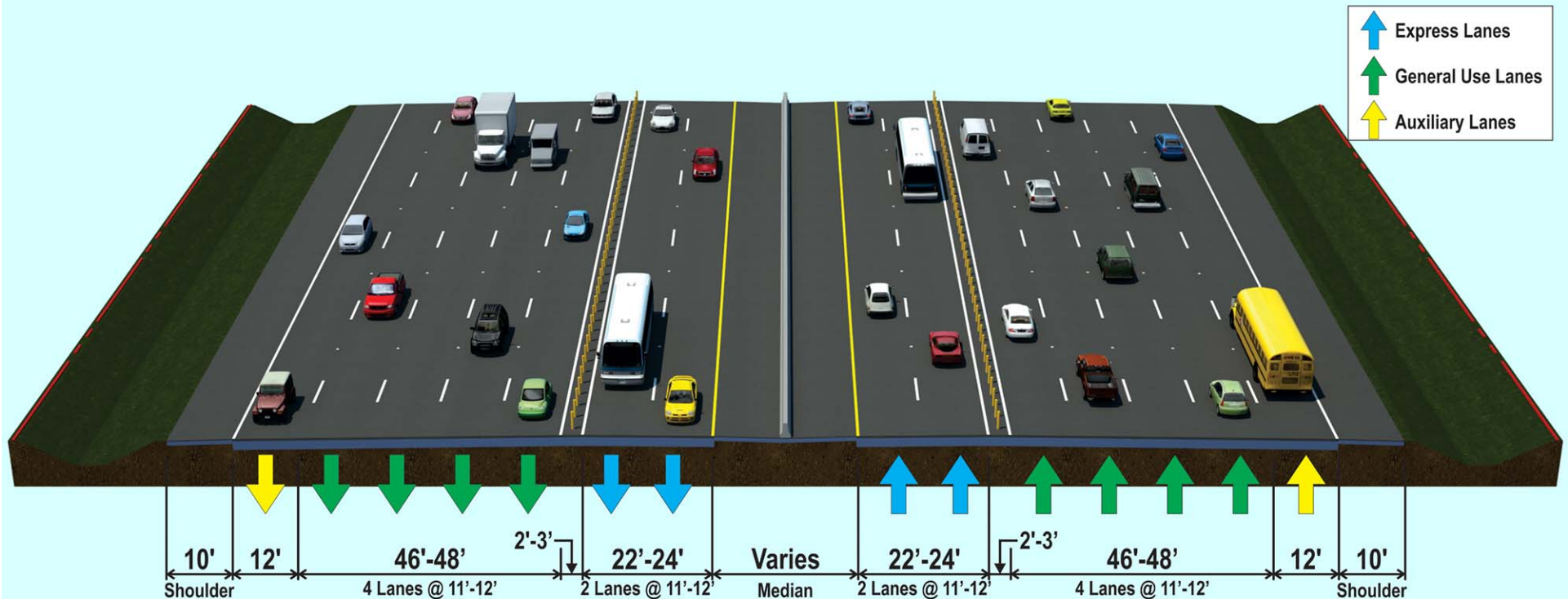
- Improve System Connectivity
  - Serve long distance trips
  - By-pass local service interchanges
  - Minimize mainline weave conflicts
- Additional Transit Alternatives





# ROADWAY TYPICAL SECTION (I-95)

## Typical Section - 4 GP Lanes with Auxiliary Lanes



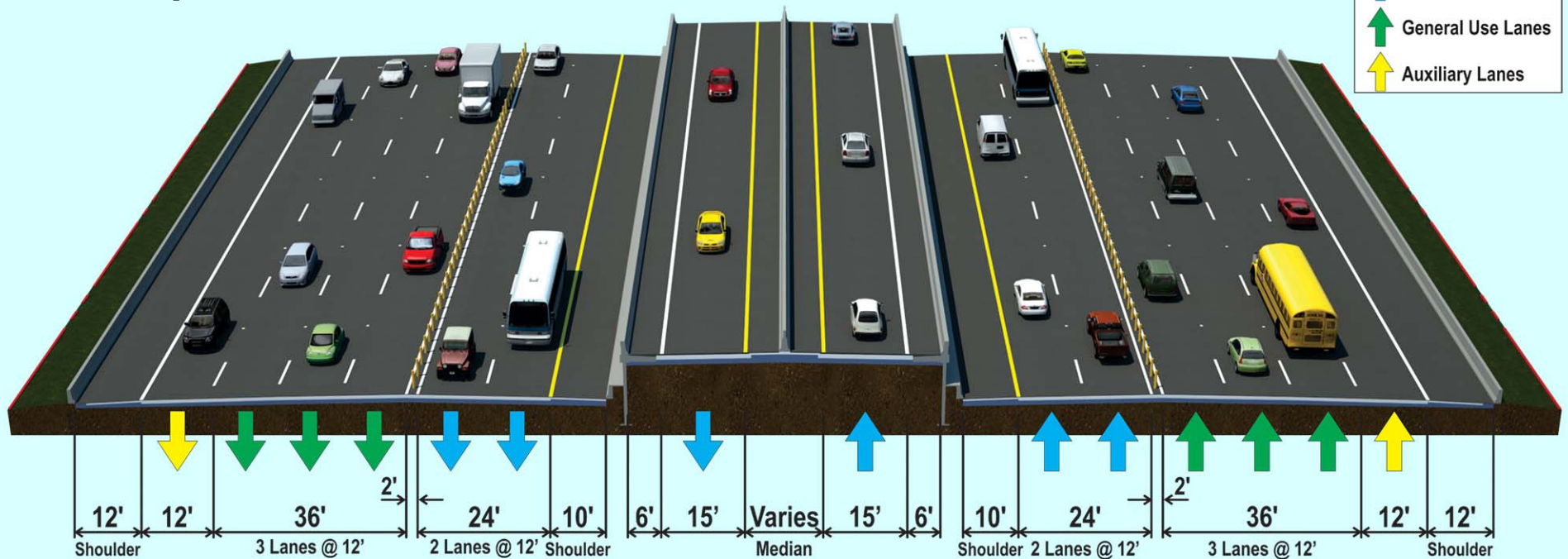
- Milling , Resurfacing, Overbuild and Widening to Accommodate the Following:
  - Two Tolled Express Lanes in Each Direction
  - Existing General Purpose and Auxiliary Lanes to Remain
  - Ingress/Egress Connection Points

Limits are:

- South of Hollywood Boulevard to North of SW 42<sup>nd</sup> Street

# ROADWAY TYPICAL SECTION (I-95)

## Typical Section - 3 GP Lanes with Auxiliary Lanes and 95 Express / I-595 Direct Connects Transition



- Milling , Resurfacing, Overbuild, Widening and Reconstruction to Accommodate the Following:
  - Direct Connect Ramps between 95 Express and I-595
  - Two Tolloed Express Lanes in Each Direction
  - Existing General Purpose and Auxiliary Lanes to Remain

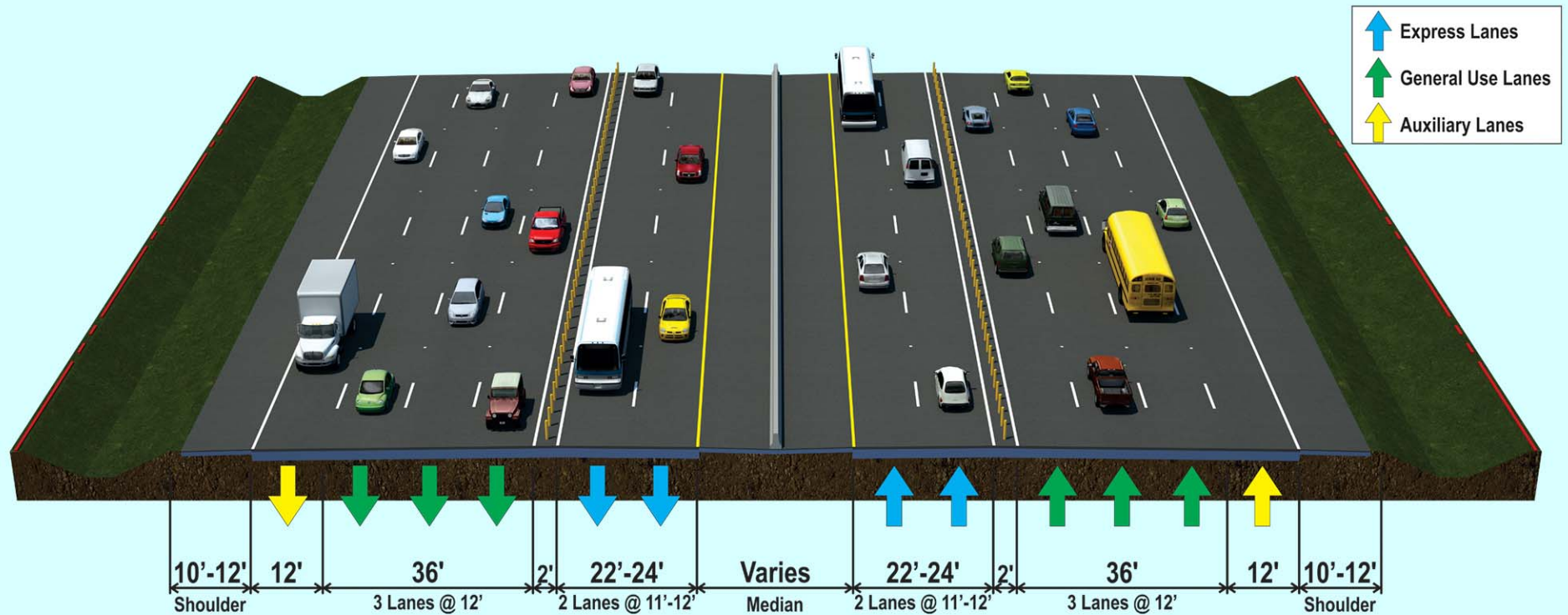
Limits are:

- North of SW 42<sup>nd</sup> Street to SR 84



# ROADWAY TYPICAL SECTION (I-95)

## Typical Section - 3 GP Lanes with Auxiliary Lanes



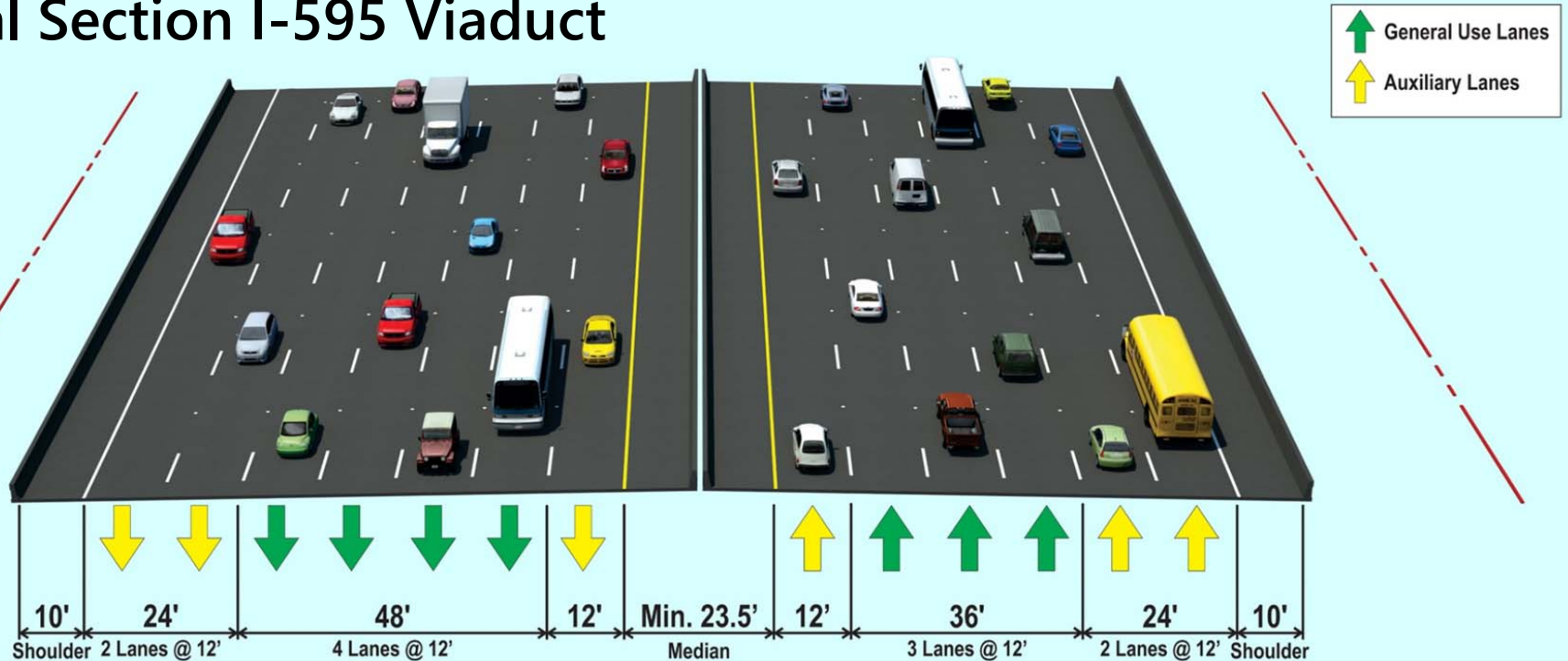
- Milling, Resurfacing and Restriping to Accommodate the Following:
  - Two Tolled Express Lanes in Each Direction
  - Existing General Purpose and Auxiliary Lanes to Remain

Limits are:

- SR 84 to Broward Boulevard

# TYPICAL SECTION (I-595)

## Typical Section I-595 Viaduct



- Milling , Resurfacing, Overbuild, Widening and Reconstruction to Accommodate the Following:
  - One Additional Auxiliary Lane in the eastbound direction and Two Additional Auxiliary Lanes in the westbound direction
  - Standard Shoulder and Lane Widths
  - Direct Connect Ramps Between 95 Express and I-595

Limits are:

- SR 7/US 441 to I-95

# RAMP SIGNALING

- Operational Technique to Control the Rate of Traffic Entering an Expressway
- Improves the Flow of Traffic Entering the Mainline While
- Avoiding Lengthy Backups on the Entrance Ramps and Cross-Streets
- All Service Interchanges - Hallandale Beach Blvd. to Linton Blvd. (Phase 3 Implementation)



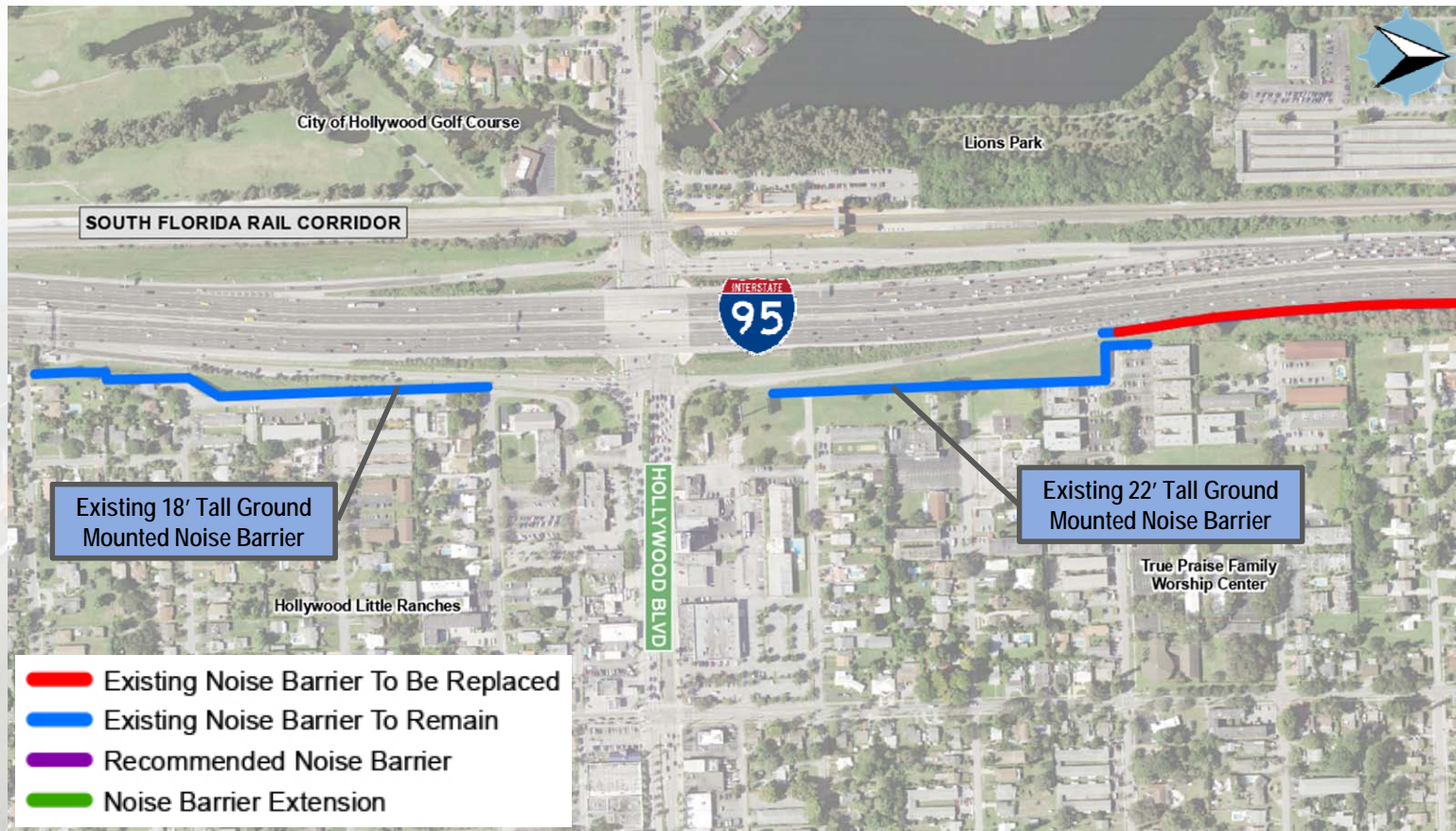


# NOISE WALLS

- Replacement of Existing Noise Barrier Segments Impacted by the Proposed Improvements:
  - Approximately 2,620 Linear Feet of 8-Foot and 14-Foot Tall Shoulder Mounted Noise Barrier
- Extension of Existing and New Noise Walls:
  - Approximately 2,020 Linear Feet of 8-Foot Tall Shoulder Mounted Noise Barrier

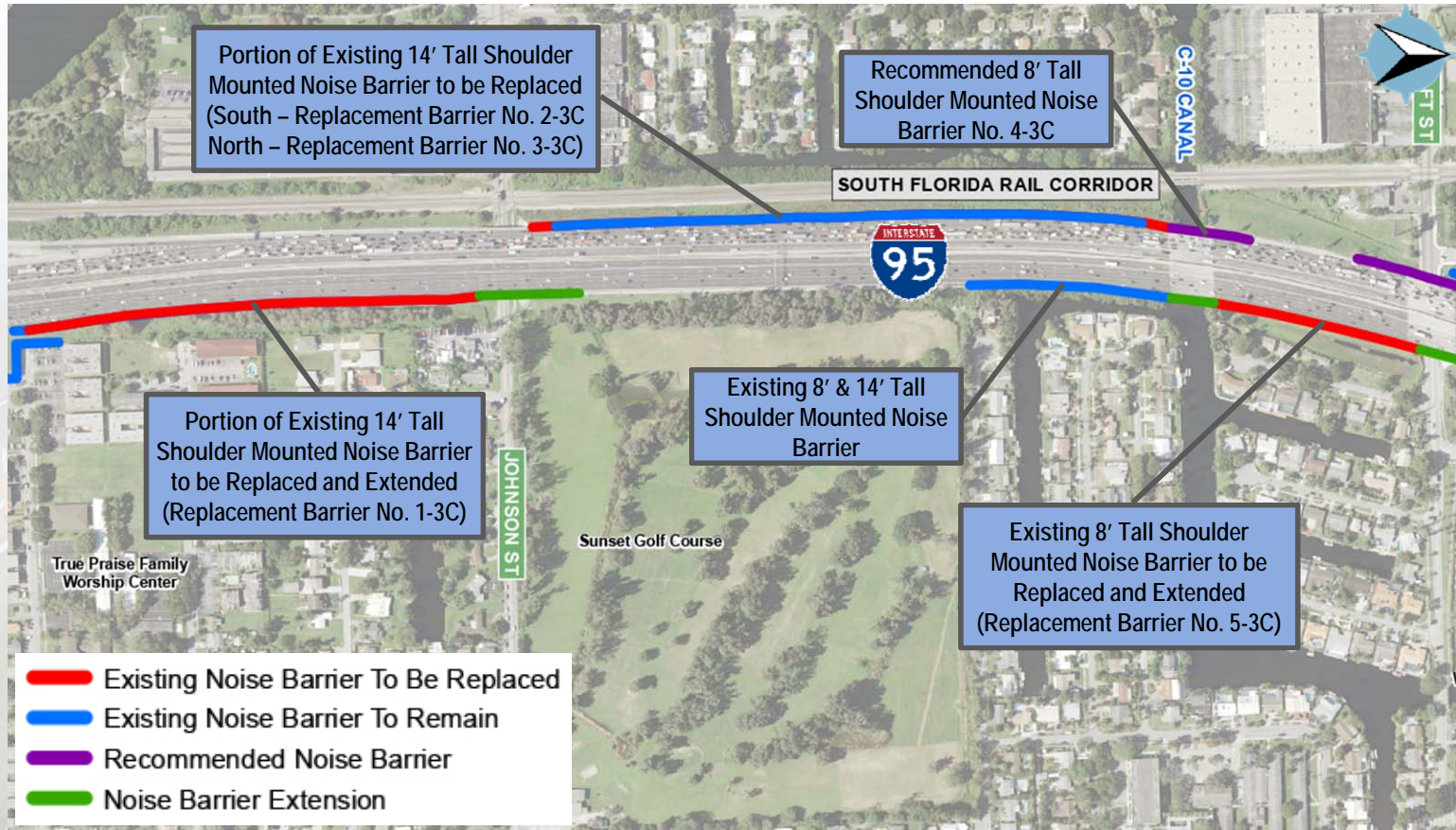


# EXISTING AND PROPOSED REPLACEMENT NOISE WALLS ALONG I-95



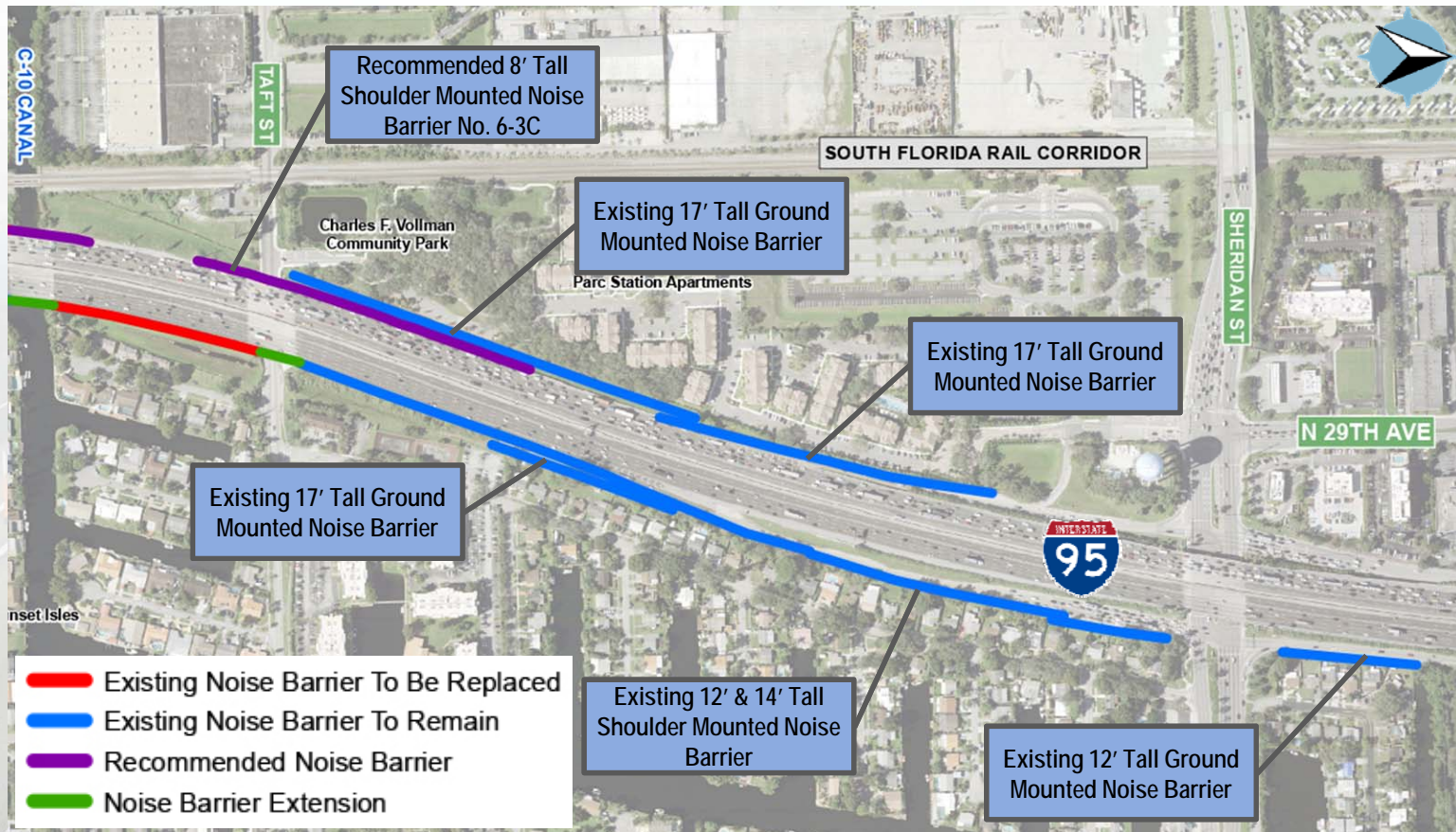


# EXISTING AND PROPOSED REPLACEMENT NOISE WALLS ALONG I-95



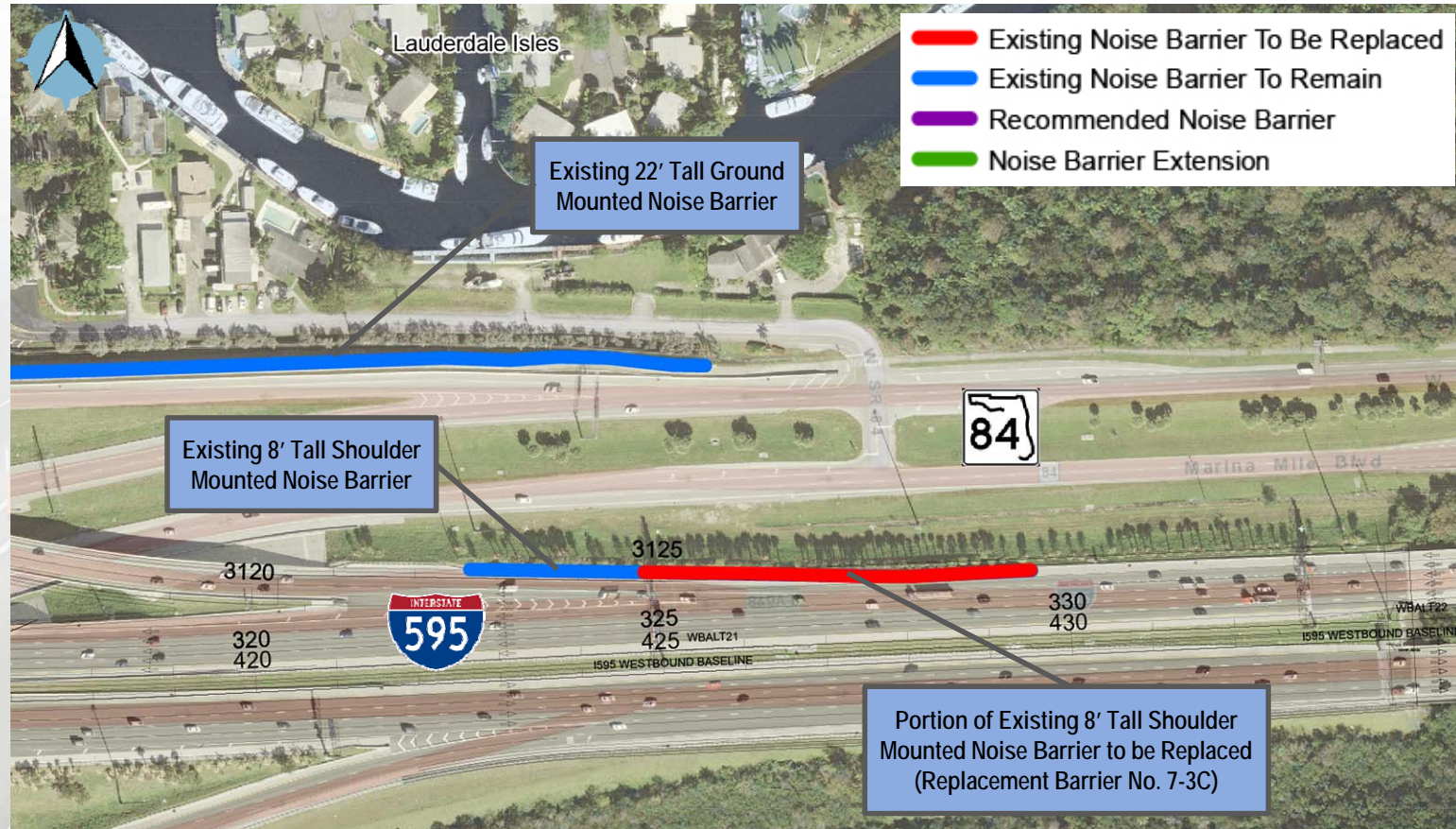


# EXISTING AND PROPOSED REPLACEMENT NOISE WALLS ALONG I-95





# EXISTING AND PROPOSED REPLACEMENT NOISE WALLS ALONG I-595



# LIGHTING

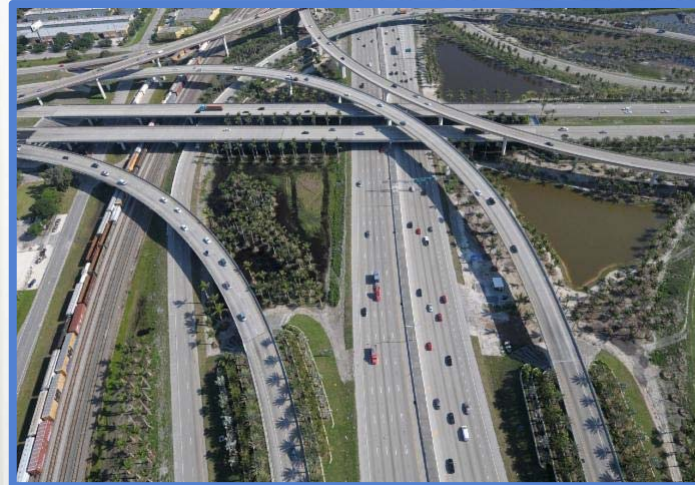
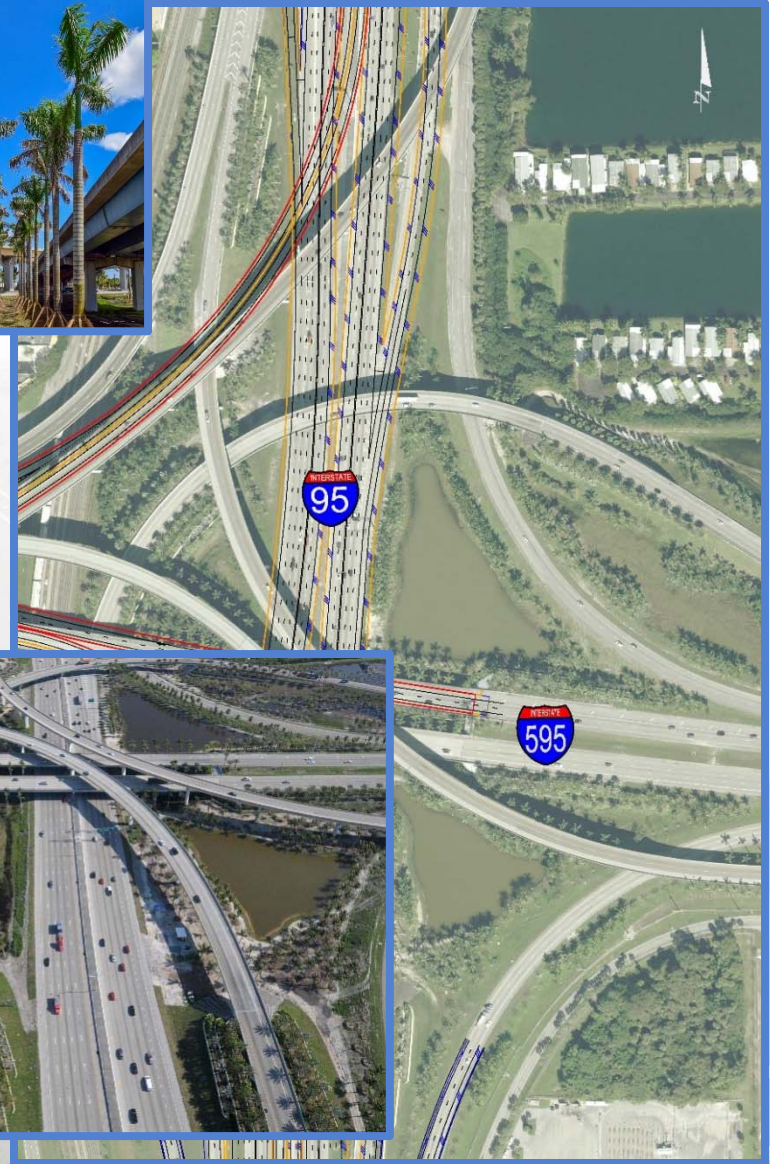
- I-95 mainline: New lighting to replace existing lighting system (South of Hollywood Blvd. to Broward Blvd.)
- I-595 and Direct Connect Ramps: New lighting system (SR 7 to SW 26<sup>th</sup> Terrace)
- SR84 Westbound: New lighting to replace existing lighting system
- New LED lighting systems to meet current FDOT Standards





# LANDSCAPING

- Original I-95/I-595 landscaping placement was based on anticipated interchange flyover ramp improvements
  - To be maintained during construction by Contractor
  - Disturbed areas to be replaced in kind as requirement of construction contract
- Additional improvements at Interchanges and Cross-Streets including:
  - Hollywood Blvd.
  - Johnson St
  - Taft St.
  - Stirling Road
  - Griffin Road



# 95 EXPRESS PHASE 3C SCHEDULE

- Contract Execution
  - Spring 2018
- Begin Construction (Field)
  - Summer 2019
- End Construction
  - 2024



# PROJECT WEBSITE

[www.95express.com/phase3](http://www.95express.com/phase3)



Home | AAA | Sitemap | Español | Kreyol

**95 EXPRESS** **FDOT**

Project Overview | Usage Guidelines | Express Bus | Related Information | 95 Express FAQs | Contact Us

**Related Info**

- Related Links
- Transportation Management Center
- Public Meetings
- Reports & Survey Results
- Ramp Signaling
- South Florida Express Lanes Network
- 95 Express Phase 3**

## 95 Express Phase 3

**Phase 3B-1: south of SW 10th St. to south of Glades Rd. - start 2018**

**Phase 3B-2: south of Glades Rd. to Linton Blvd. - start 2020**

**Phase 3A-1: south of Broward Blvd. to south of Commercial Blvd. - start 2016**

**Phase 3A-2: south of Commercial Blvd. to SW 10th St. - start 2016**

**Phase 3C: Glades Rd. to Linton Blvd. - start 2020**

**Join us for the 95 Express Phase 3B-1 Industry Forum**

To register for this event, [click here](#).

The Florida Department of Transportation (FDOT) is implementing Phase 3 of the 95 Express Lanes continuing 29 miles north from Stirling Rd. in Broward County to Linton Blvd. in Palm Beach County. The purpose of the 95 Express Lanes is to improve mobility, relieve congestion, provide additional travel options, enhance transit services, accommodate future growth and development in the region, enhance emergency evacuation, and improve system connectivity between key limited access facilities in South Florida. 95 Express is part of a regional network of express lanes that will provide a safe, efficient, and reliable transportation alternative to drivers traveling throughout South Florida.

The Phase 3 project limits were evaluated as three individual Project Development and Environment (PDE) studies. The studies were conducted from Stirling Rd. to Oakland Park Blvd. in Broward County; from Oakland Park Blvd. in Broward County to Glades Rd. in Palm Beach County; and from Glades Rd. to Linton Blvd. in Palm Beach County. In order to expedite the construction of the 95 express lanes in Southeast Florida, FDOT combined the results of all three studies into Phase 3. The improvements in Phase 3 will be implemented in segments due to funding limitations. The first segment (3A-1 from south of Broward Blvd. to north of Commercial Blvd. and 3A-2 north of Commercial Blvd. to SW 10th St. in Broward County) will begin construction by mid-2016. The second segment (3B-1 from south of SW 10th St. to south of Glades Rd.) is anticipated to begin construction in 2018. The third segment (3B-2 south of Glades Rd. to Linton Blvd.) is scheduled for construction in 2020. A key component of Phase 3 is a potential direct connection between northbound and

# 95 Express Phase 3 Point of Contact

Vanita Saini, PE, Project Manager  
Florida Department of Transportation,  
District Four  
3400 W. Commercial Blvd.  
Fort Lauderdale, FL 33309  
(954) 777-4468  
[Vanita.Saini@dot.state.fl.us](mailto:Vanita.Saini@dot.state.fl.us)



# QUESTIONS

