



## Summary of Monthly Operations – August 2009

### General

In August 2009 the 95 Express Lanes:

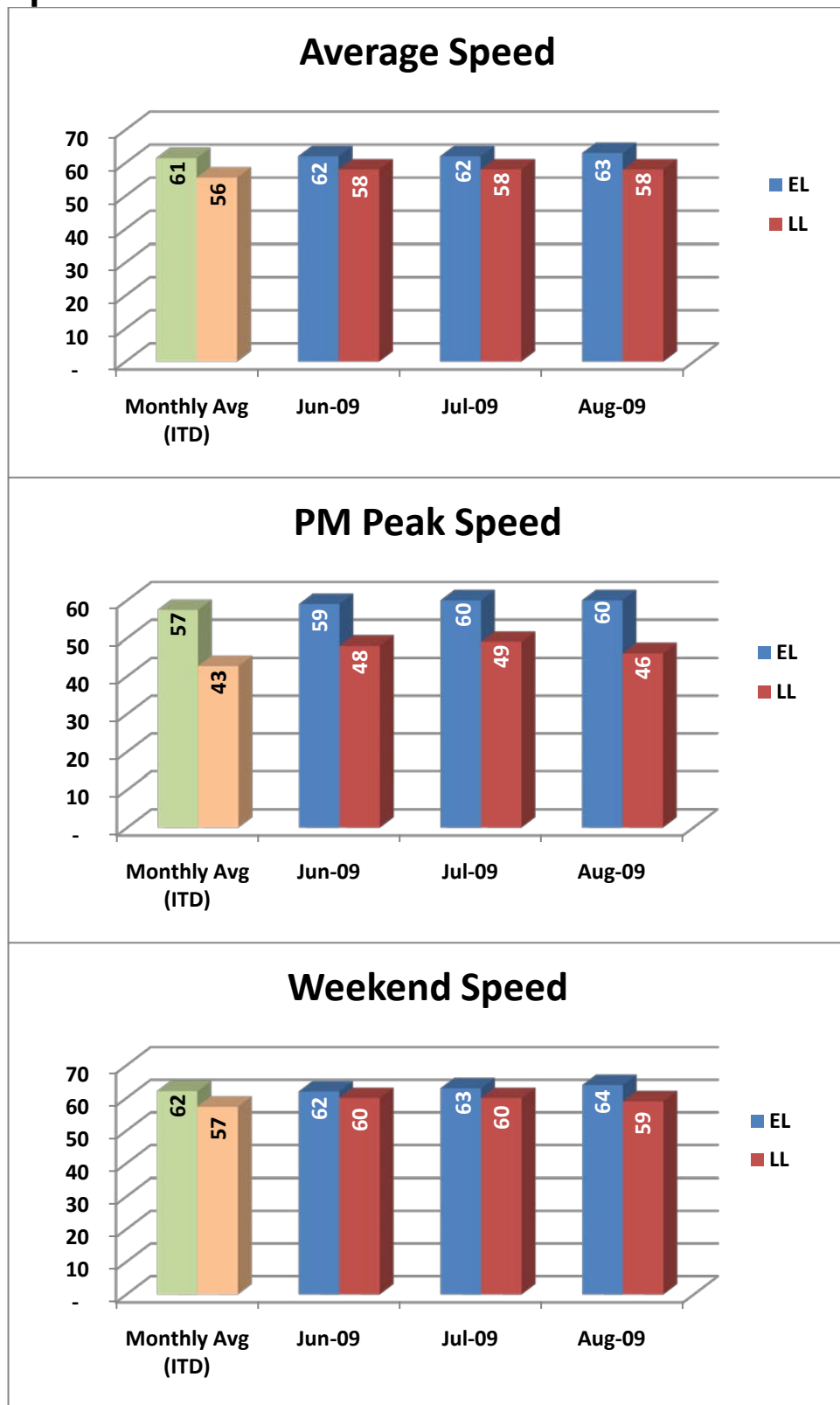
- ✓ Serviced 607,654 vehicle trips bringing the total since opening (December 5, 2008) to 5,408,521.
- ✓ Had estimated monthly toll revenue of \$370,817 bringing the total revenue to date to approximately \$3.54 million.
- ✓ Tolls ranged from \$0.25 to the highest toll for the month of \$2.75.
  - Average weekday toll - \$0.77
  - Average PM peak period (4pm to 7pm) toll - \$1.58
  - Average weekend toll - \$0.24
  - Average off-peak weekday toll - \$0.40
  - Approximately 85% of the customers were charged \$1.50 or less.
- ✓ Average weekday traffic volume was 22,968, a 0.4% increase over July.
- ✓ Average PM Peak Period (4pm to 7pm) traffic volume was 7,149, a 3.1% increase over July.
- ✓ Operated 14 mph above the local lanes (LL) during the PM peak period (4pm to 7pm) and 5 mph greater overall.
- ✓ Operated above 45 mph 100.0% of the time.
- ✓ Remained open to motorist 95.4% of the time, while closed 3.2% due to planned construction and 1.3% due to non-recurring events.
- ✓ Reached a total of 7,187 registered vehicles.

August 2009 Statistics	Speed (mph)			Volume (vpd)	
	EL	LL	Δ	EL	LL
Average Weekday	-	-	-	22,968	103,480
Average PM Peak Period	60	46	14	7,149	18,961
Average Weekend Day	64	59	5	12,533	93,094

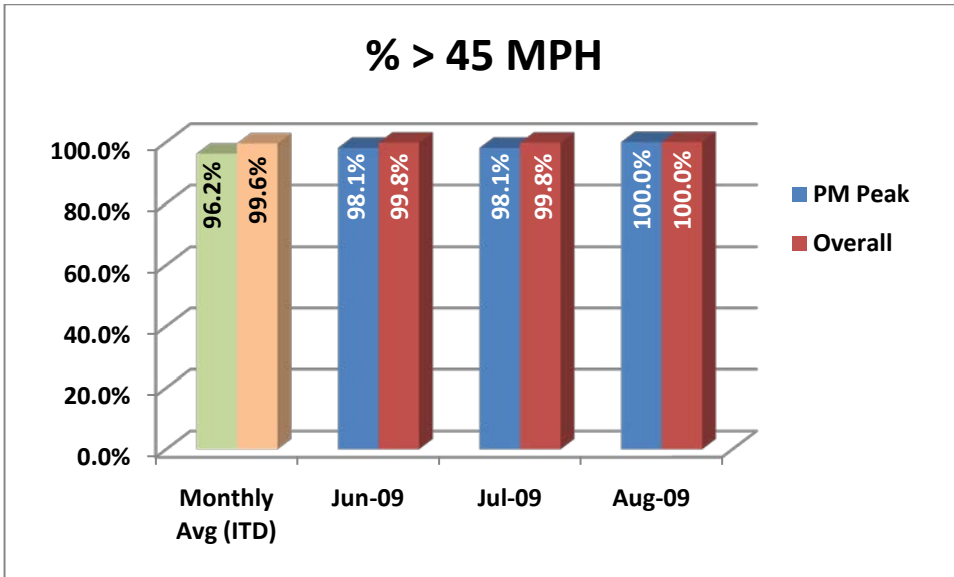


## Operations/Traffic Statistics

### Speed Data



NOTE: ITD = Inception to Date



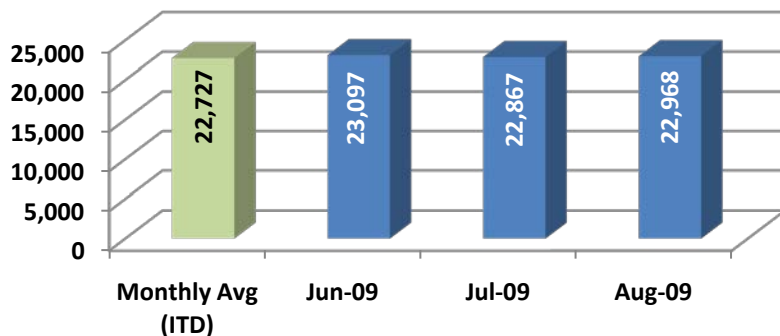
NOTE: ITD = Inception to Date



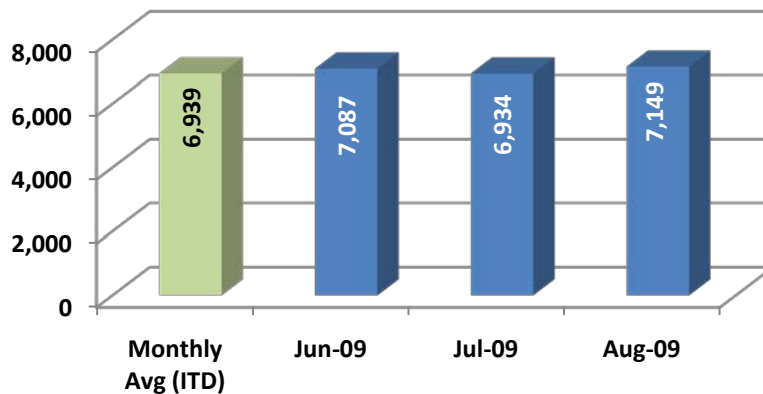
## Operations/Traffic Statistics

### Volume Data

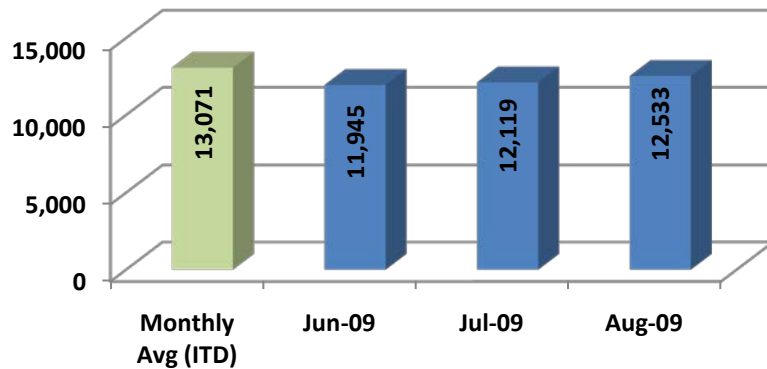
#### Avg. EL Weekday Traffic



#### Avg. EL PM Peak Traffic



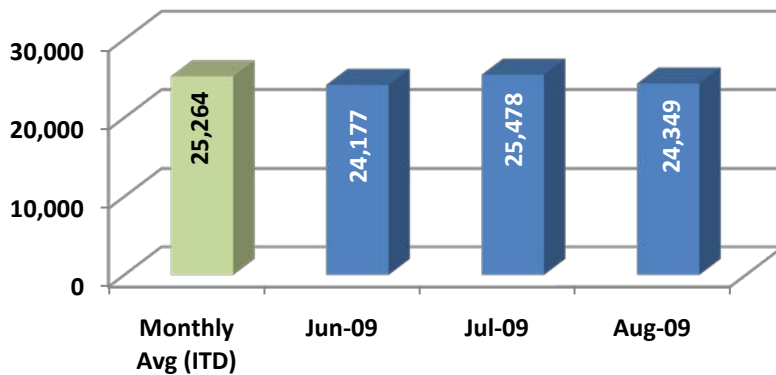
#### Avg. EL Weekend Traffic



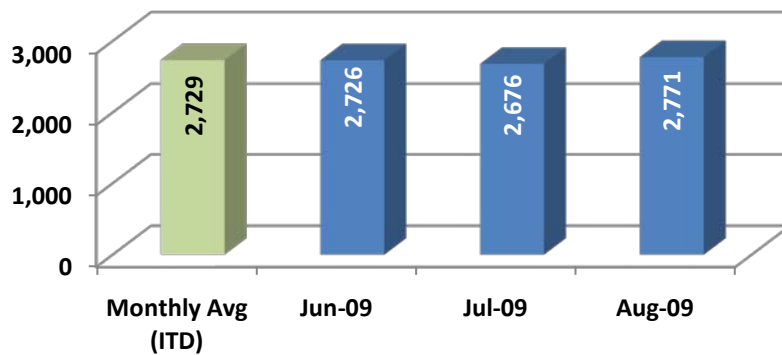
NOTE: ITD = Inception to Date



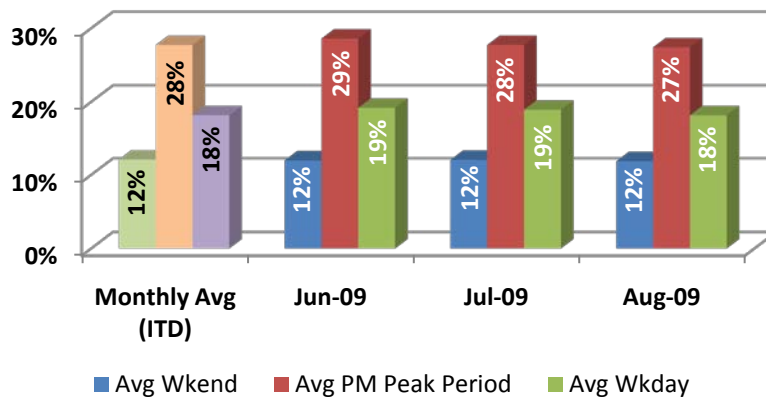
### Highest EL Weekday Traffic



### Highest EL Hour Traffic



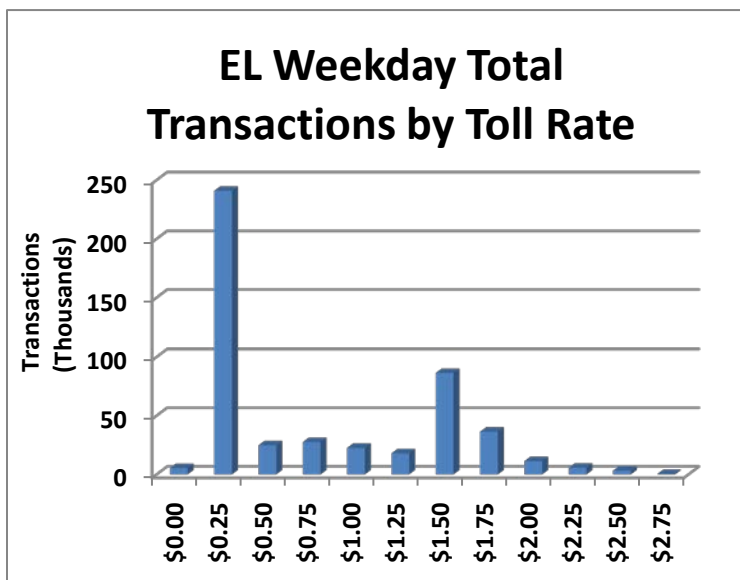
### EL % of Overall Traffic



NOTE: ITD = Inception to Date



## Revenue/Tolls Statistics



Toll ranges \$0.25 to \$2.75

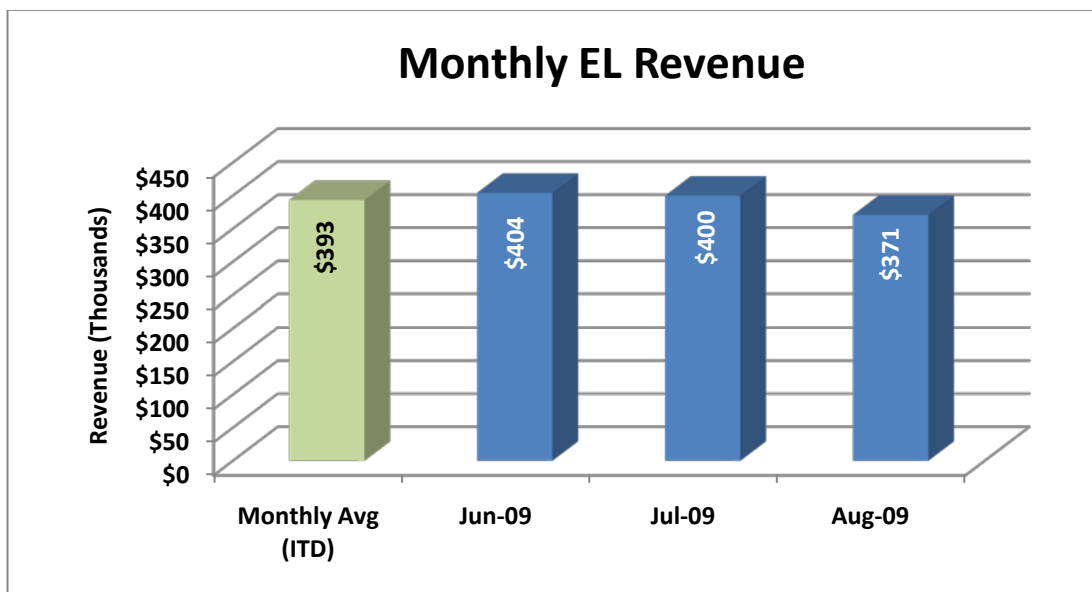
Average weekday toll charged was \$0.77

Average weekday PM peak period (4-7) toll charged was \$1.58

Average weekend toll charged was \$0.24

Average weekday off-peak hours (all hours except for 4-7) toll charged was \$0.40

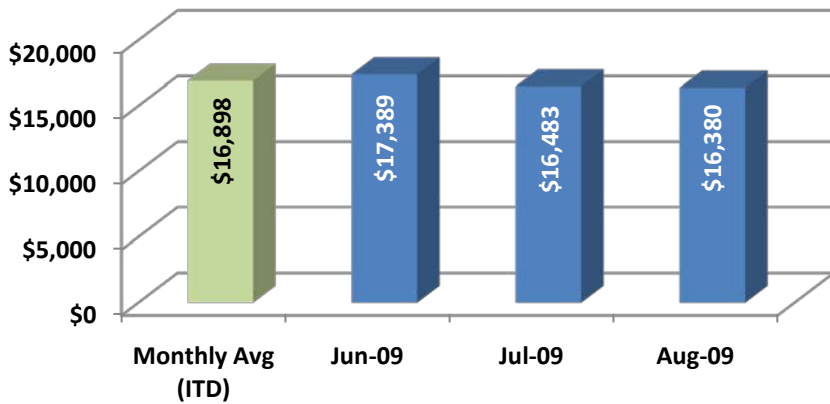
Most frequently charged weekday PM peak period (4-7) toll rate was \$1.50



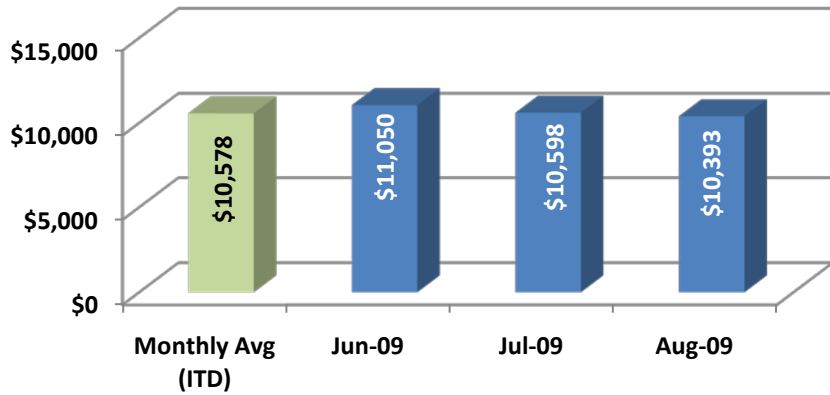
NOTE: ITD = Inception to Date



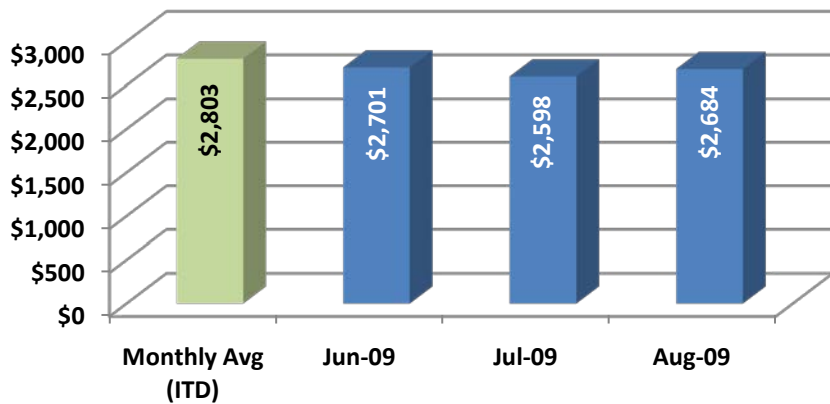
### Avg. EL Weekday Revenue



### Avg. EL PM Peak Revenue



### Avg. EL Weekend Revenue

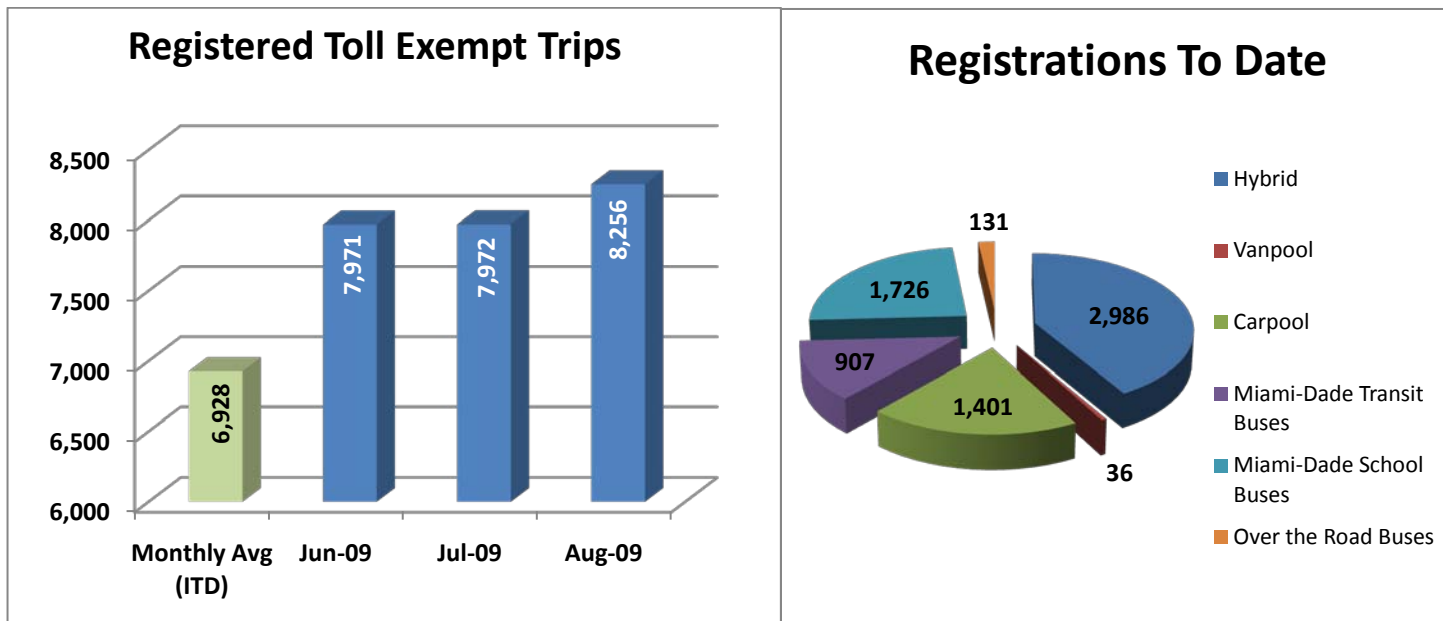


NOTE: ITD = Inception to Date



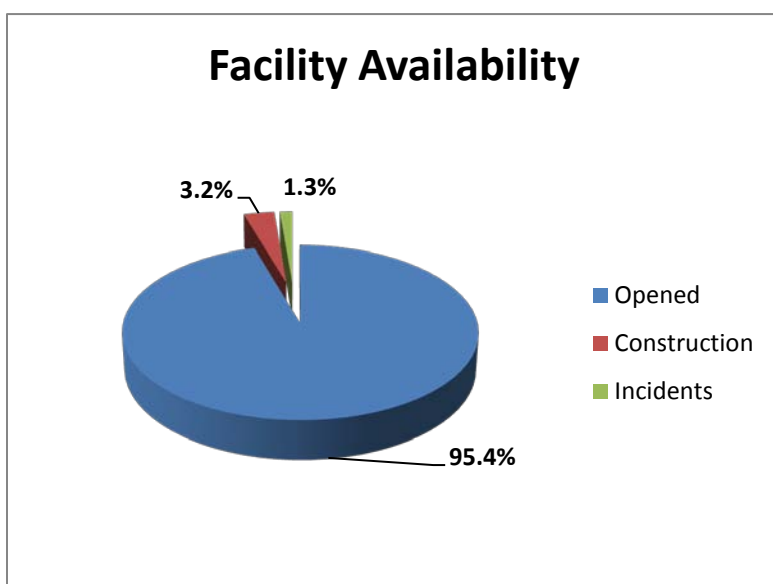
## Registrations—Toll Exempt Trips

The total registrations through August 2009 was 7,187. There were 8,256 registered toll exempt vehicle trips for the month of August.



NOTE: ITD = Inception to Date

## Facility Availability



The 95 Express Lanes were open to motorist 95.4% of the time, while closed 3.2% due to planned construction and 1.3% due to non-recurring events.

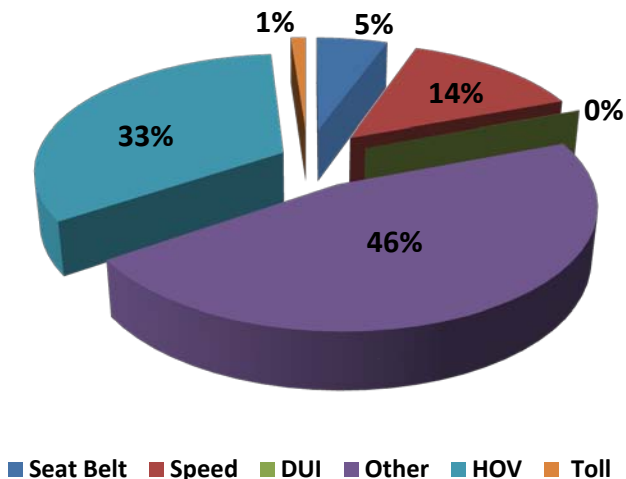




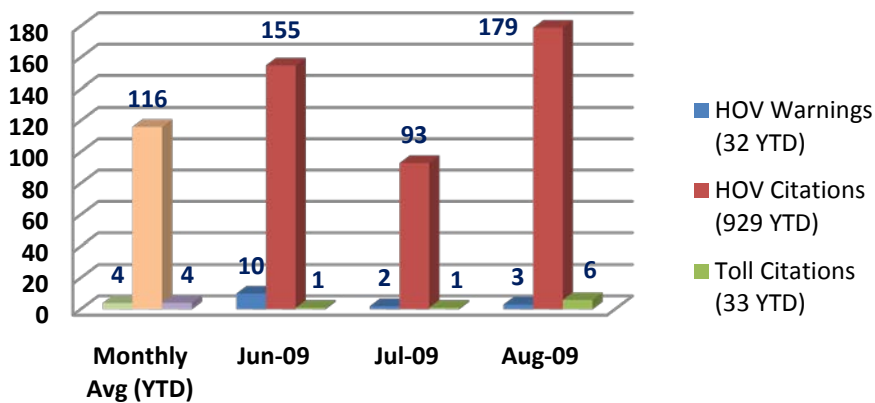
## Enforcement

The Florida Highway Patrol (FHP) conducts visual enforcement with the 95 Express Lanes. The first graph represents the total percentage breakdown of all citation categories for calendar year 2009. The second graph represents monthly High Occupancy Vehicle (HOV) and Toll violations.

### FHP Citation Types (YTD)



### Monthly HOV and Toll Violations (by FHP)



NOTE: YTD = Year to Date