



Summary of Monthly Operations – July 2009

General

In July 2009 the 95 Express Lanes:

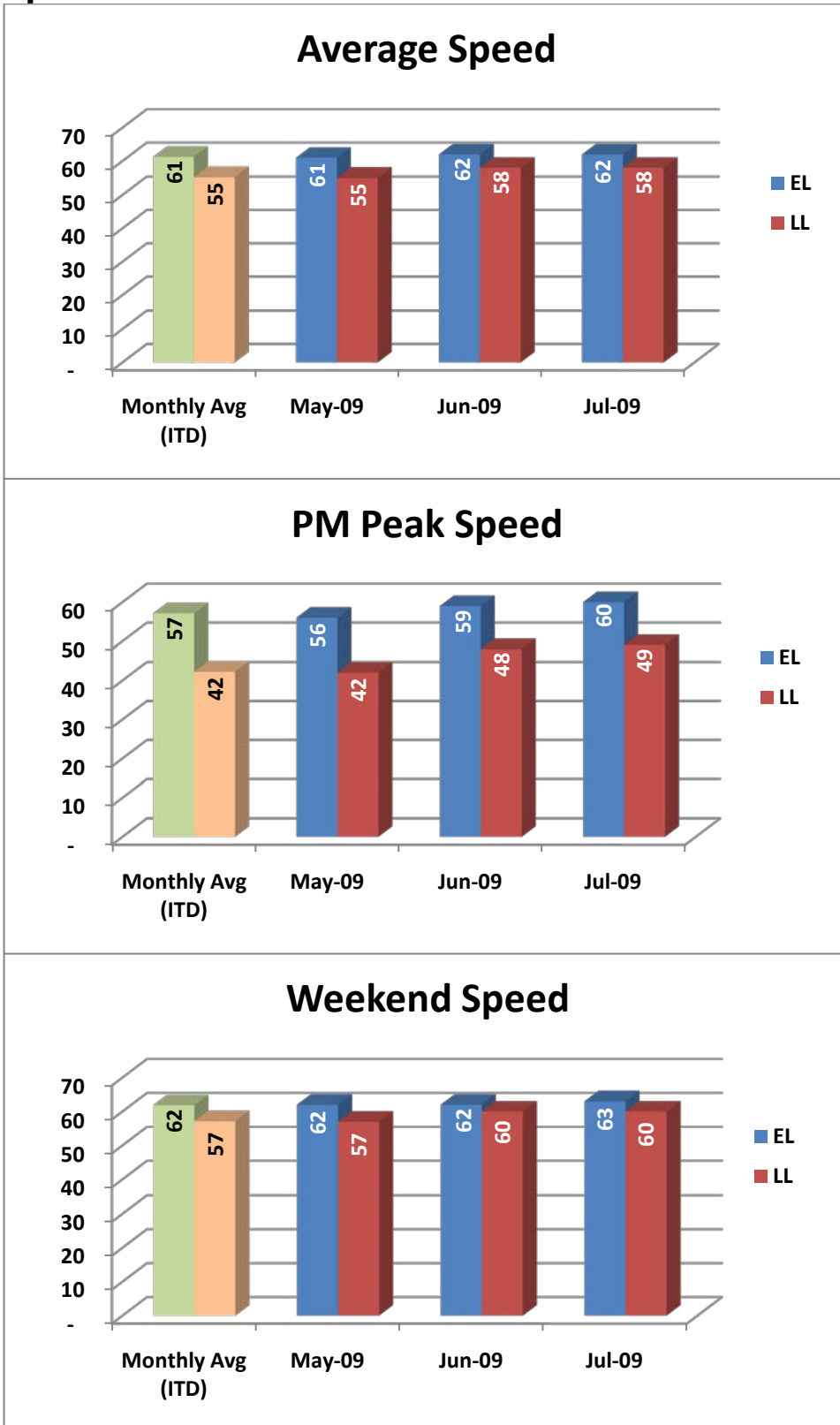
- ✓ Serviced 622,899 vehicle trips bringing the total since opening (December 5, 2008) to 4,800,867.
- ✓ Had estimated monthly toll revenue of \$399,886 bringing the total revenue to date to approximately \$3.15 million.
- ✓ Tolls ranged from \$0.25 to the highest toll for the month of \$3.25.
 - Average weekday toll - \$0.79
 - Average PM peak period (4pm to 7pm) toll - \$1.67
 - Average weekend toll - \$0.25
 - Average off-peak weekday toll - \$0.40
 - Approximately 85% of the customers were charged \$1.50 or less.
- ✓ Average weekday traffic volume was 22,867, a 1.0% decrease over June.
- ✓ Average PM Peak Period (4pm to 7pm) traffic volume was 6,934, a 2.2% decrease over June.
- ✓ Operated 11 mph above the local lanes (LL) during the PM peak period (4pm to 7pm) and 4 mph greater overall.
- ✓ Operated above 45 mph 99.8% of the time.
- ✓ Remained open to motorist 95.7% of the time, while closed 3.6% due to planned construction and 0.7% due to non-recurring events.
- ✓ Reached a total of 7,100 registered vehicles.

July 2009 Statistics	Speed (mph)			Volume (vpd)	
	EL	LL	Δ	EL	LL
Average Weekday	-	-	-	22,867	97,980
Average PM Peak Period	60	49	11	6,934	18,803
Average Weekend Day	63	60	3	12,119	88,451

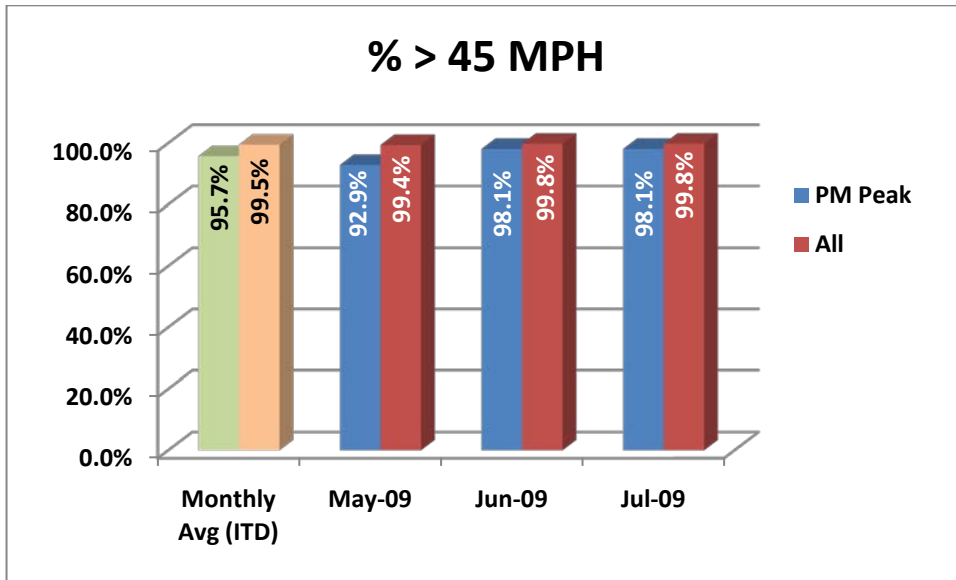


Operations/Traffic Statistics

Speed Data



NOTE: ITD = Inception to Date



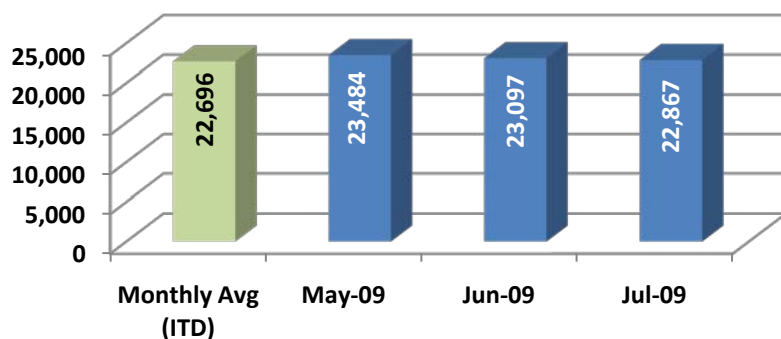
NOTE: ITD = Inception to Date



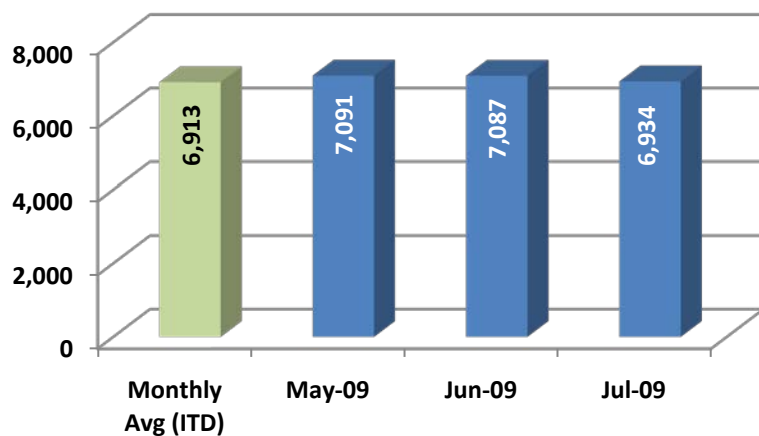
Operations/Traffic Statistics

Volume Data

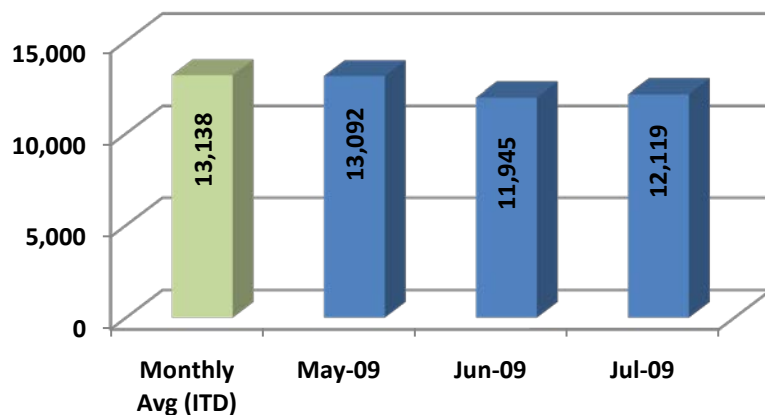
Avg. EL Weekday Traffic



Avg. EL PM Peak Traffic



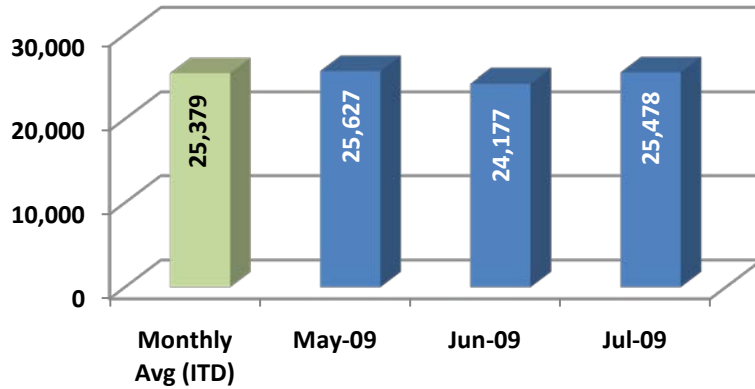
Avg. EL Weekend Traffic



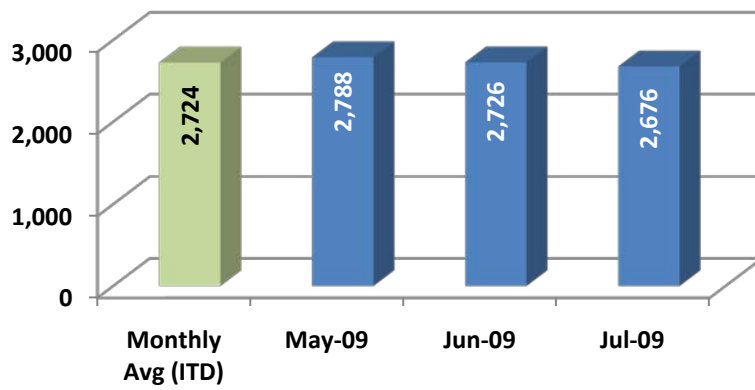
NOTE: ITD = Inception to Date



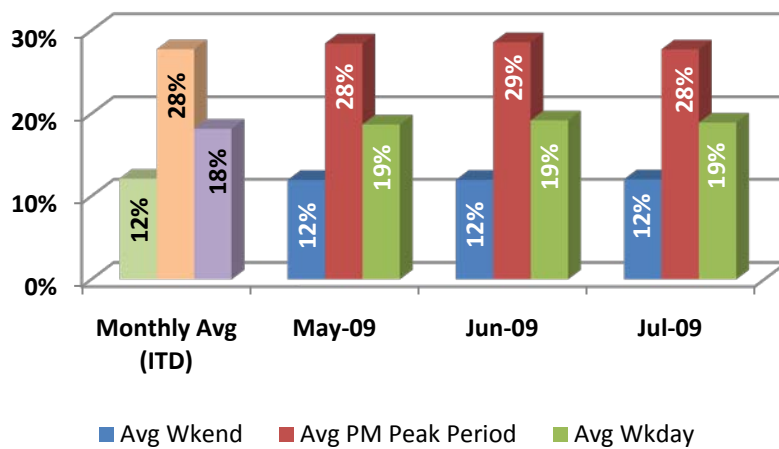
Highest EL Weekday Traffic



Highest EL Hour Traffic



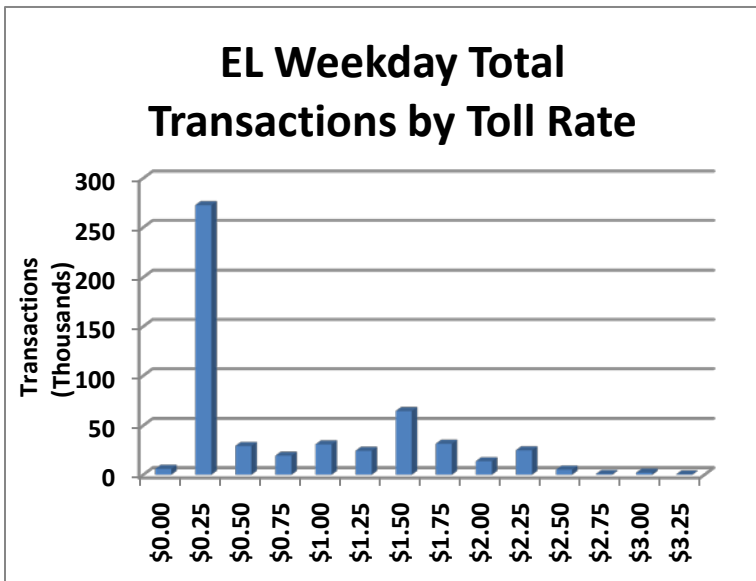
EL % of Overall Traffic



NOTE: ITD = Inception to Date



Revenue/Tolls Statistics



Toll ranges \$0.25 to \$3.25

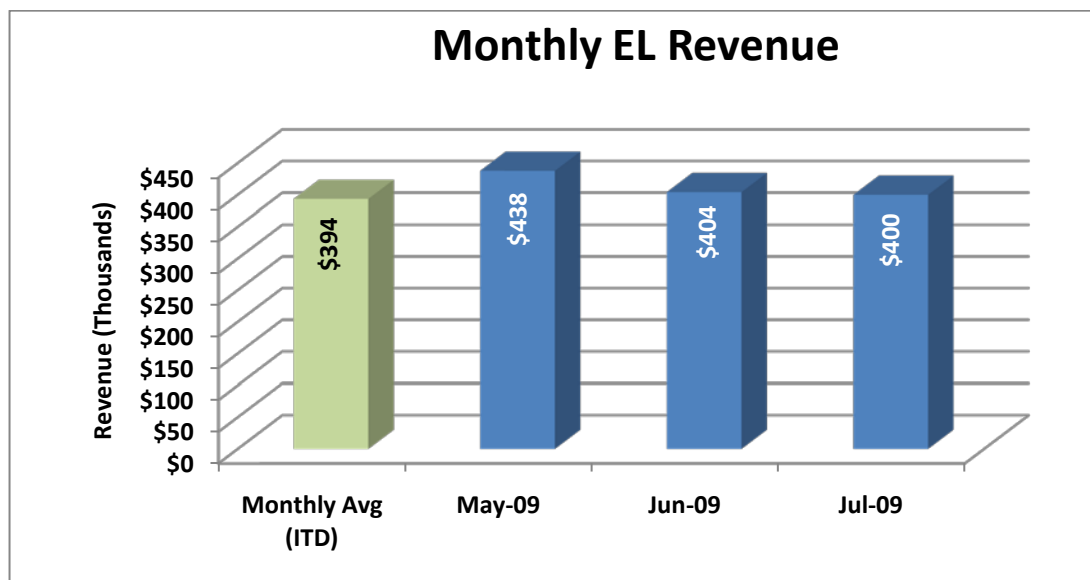
Average weekday toll charged was \$0.79

Average weekday PM peak period (4-7) toll charged was \$1.67

Average weekend toll charged was \$0.25

Average weekday off-peak hours (all hours except for 4-7) toll charged was \$0.40

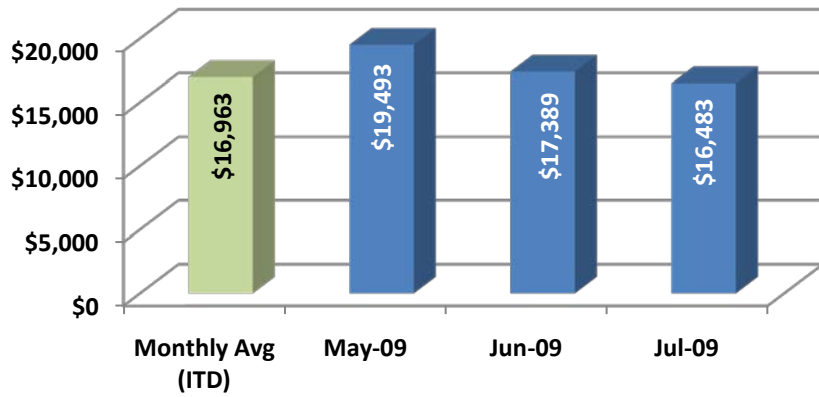
Most frequently charged weekday PM peak period (4-7) toll rate was \$1.50



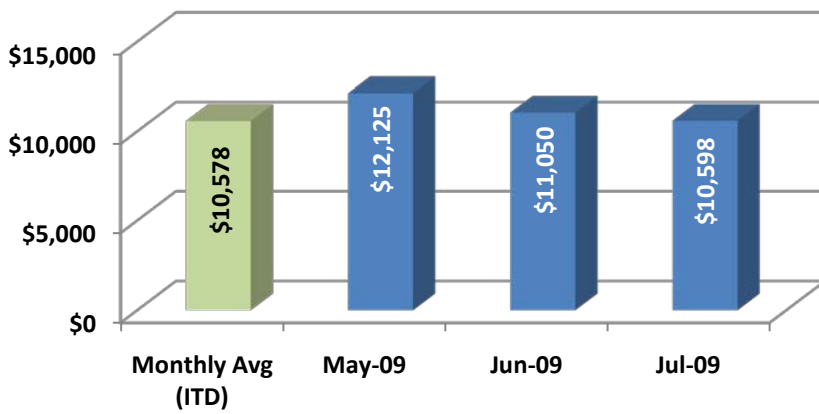
NOTE: ITD = Inception to Date



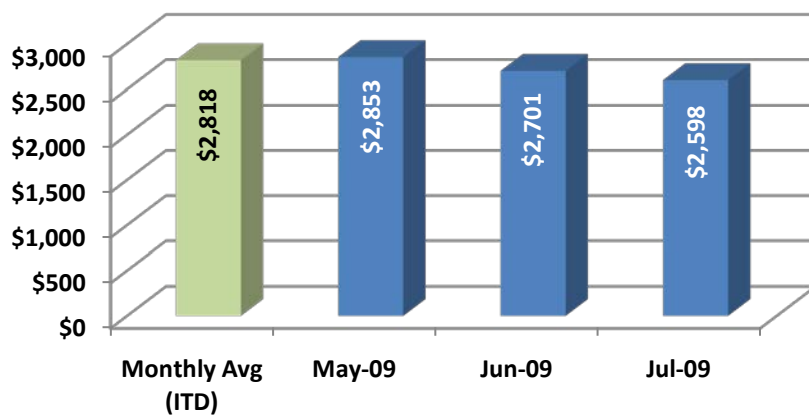
Avg. EL Weekday Revenue



Avg. EL PM Peak Revenue



Avg. EL Weekend Revenue

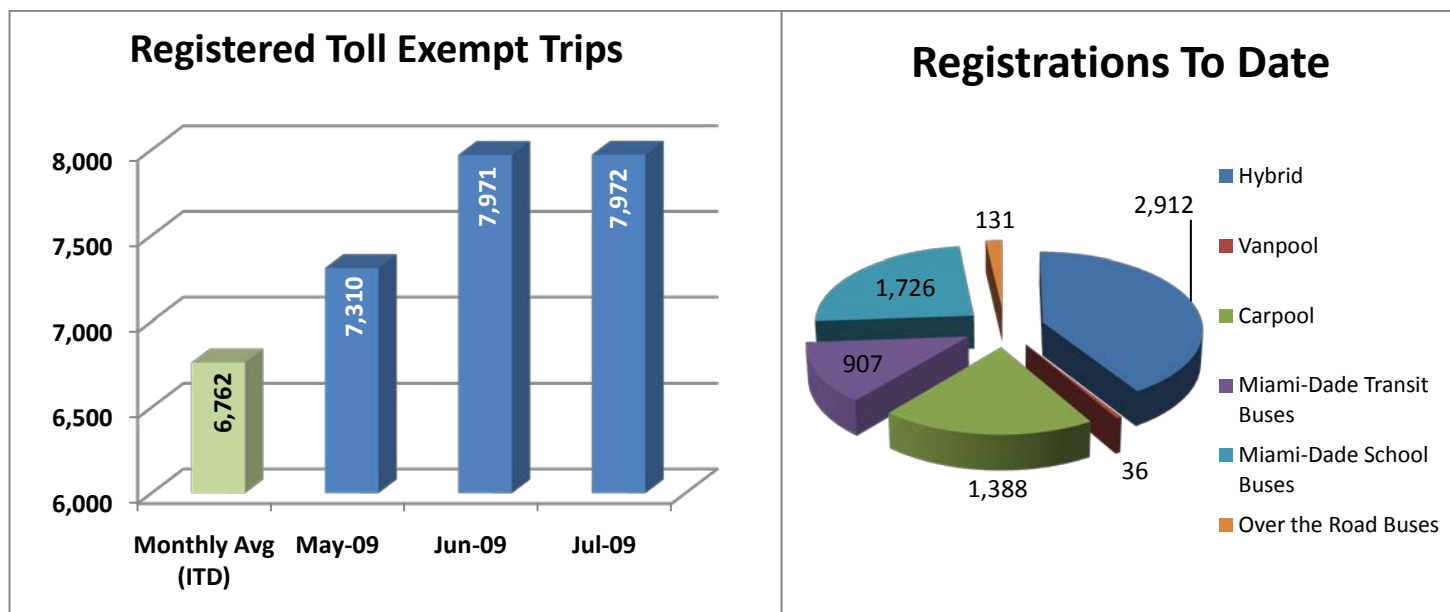


NOTE: ITD = Inception to Date



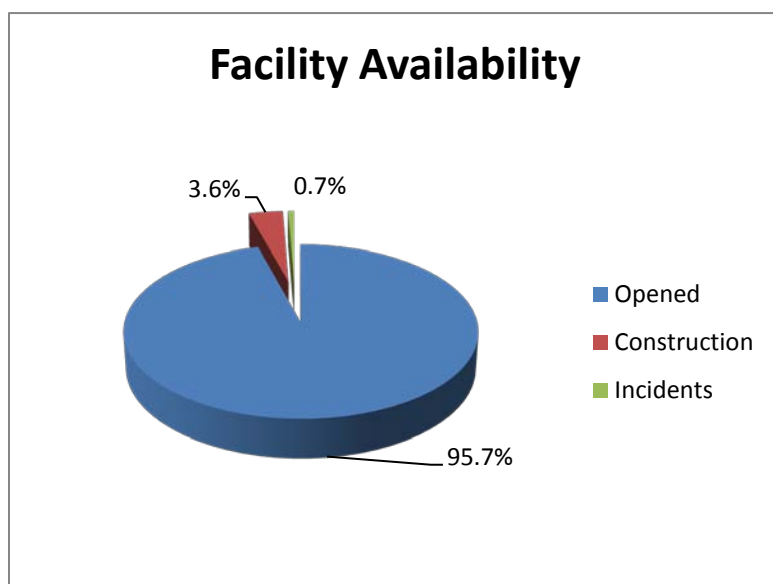
Registrations—Toll Exempt Trips

The total registrations through July 2009 was 7,100. There were 7,972 registered toll exempt vehicle trips for the month of July.



NOTE: ITD = Inception to Date

Facility Availability



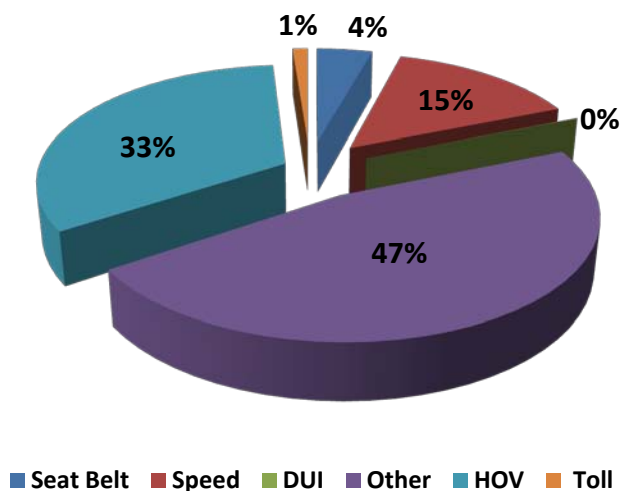
The 95 Express Lanes were open to motorist 95.7% of the time, while closed 3.6% due to planned construction and 0.7% due to non-recurring events.



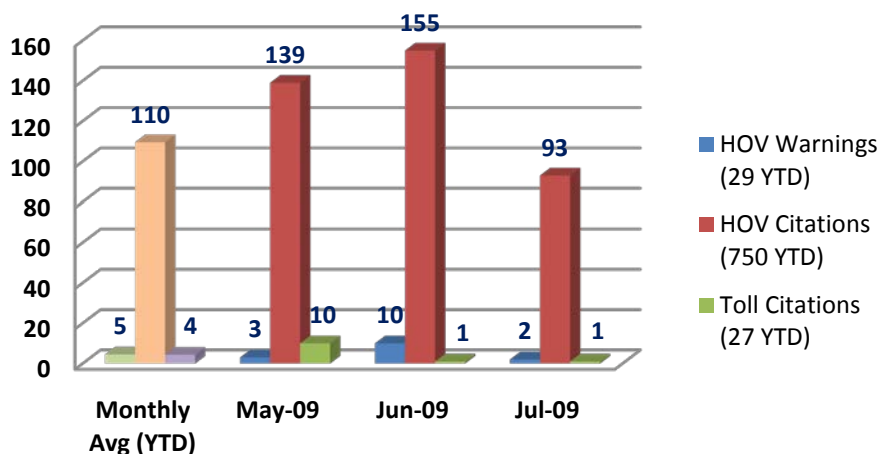
Enforcement

The Florida Highway Patrol (FHP) conducts visual enforcement with the 95 Express Lanes. The first graph represents the total percentage breakdown of all citation categories for calendar year 2009. The second graph represents monthly High Occupancy Vehicle (HOV) and Toll violations.

FHP Citation Types (YTD)



Monthly HOV and Toll Violations (by FHP)



NOTE: YTD = Year to Date