



Summary of Monthly Operations – November 2010

General

On January 15, 2010 the 95 Express Lanes began its southbound operations. This monthly report has been modified to reflect both directions of traffic with all corresponding performance measures. In total, the 95 Express Lanes:

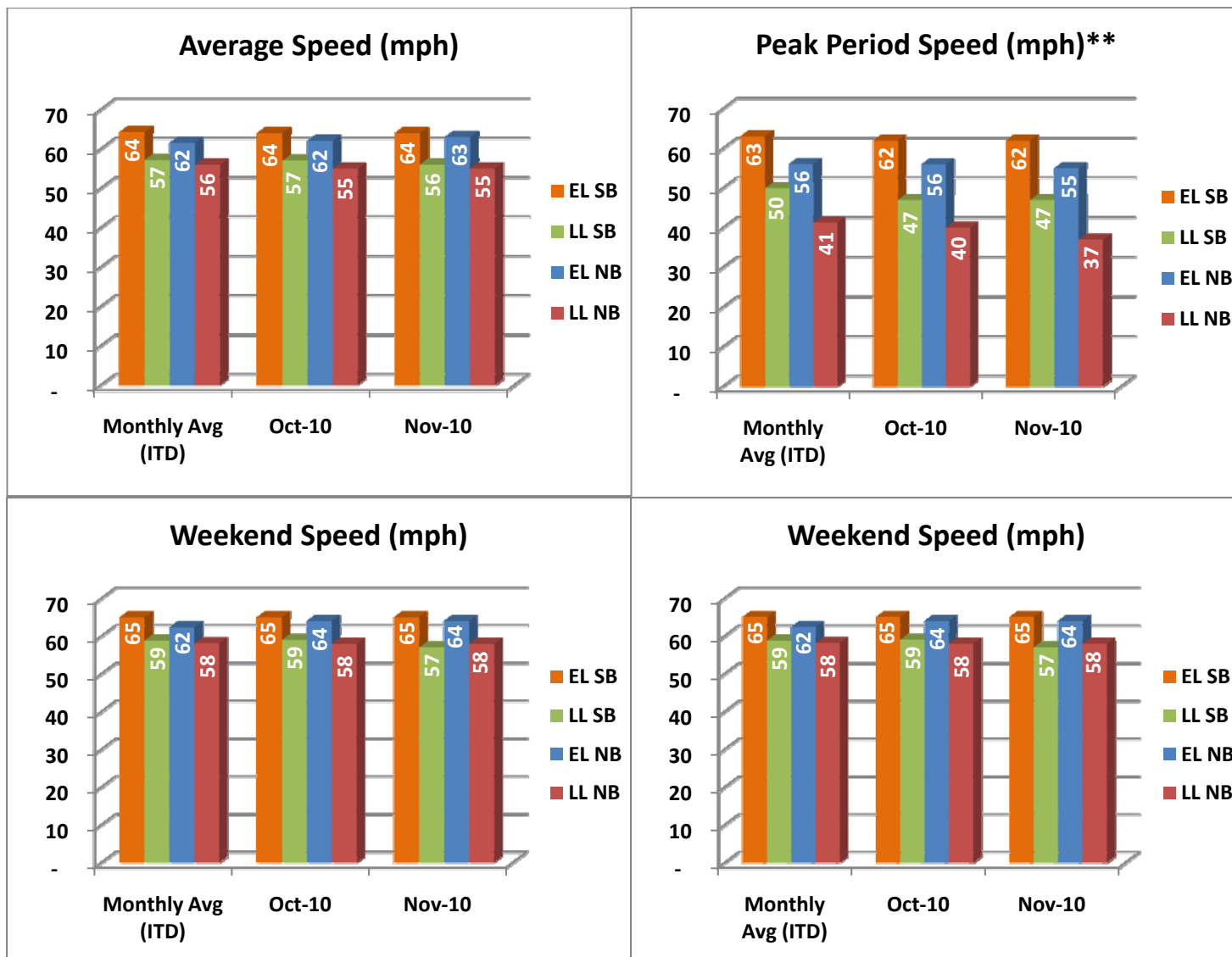
- ✓ Serviced 1,573,918 vehicle trips in November (15.6 million in 2010 to date), bringing the total since opening (December 5, 2008) to approximately 23.5 million trips.
- ✓ Had estimated monthly toll revenue of \$1.30 million in November (\$12.4 million in 2010 to date) bringing the total revenue to date to approximately \$17.6 million.
- ✓ Increased to a total of 8,481 registered vehicles.

<u>November 2010 Statistics</u>	<u>Southbound</u>		<u>Northbound</u>			
Trips	794,796		779,122			
Revenue	\$628,832		\$672,454			
Tolls						
- Range	\$0.00 - \$3.75		\$0.00 - \$7.10			
- Avg. Weekday	\$0.99		\$1.10			
- Avg. Peak Period**	\$1.74		\$2.33			
- Avg. Weekend	\$0.32		\$0.24			
- Avg. Off Peak	\$0.62		\$0.59			
- 85 th Percentile Weekday	\$2.00		\$2.25			
Volume (veh)	EL	LL	EL	LL		
- Avg. Weekday	29,388	109,397	29,029	100,685		
- Avg. Peak Period**	8,224	19,624	8,098	18,379		
Speed (mph)	EL	LL	Δ	EL	LL	Δ
- Avg. Overall	64	56	8	63	55	8
- Avg. Peak Period**	62	47	15	55	37	18
Operated Above 45 MPH	100.0%		99.3%			
Remained Open to Motorists	95.5%		96.1%			
Closed due to Planned Construction	3.6%		2.1%			
Closed due to Non-recurring Events	0.9%		1.6%			
<i>EL (Express Lanes); LL (Local Lanes)</i>						
<i>**Peak Period is defined as 6-9 AM (southbound) and 4-7 PM (northbound).</i>						



Operations/Traffic Statistics - Speed Data

** Peak Period is defined as 6-9 AM (southbound) and 4-7 PM (northbound).

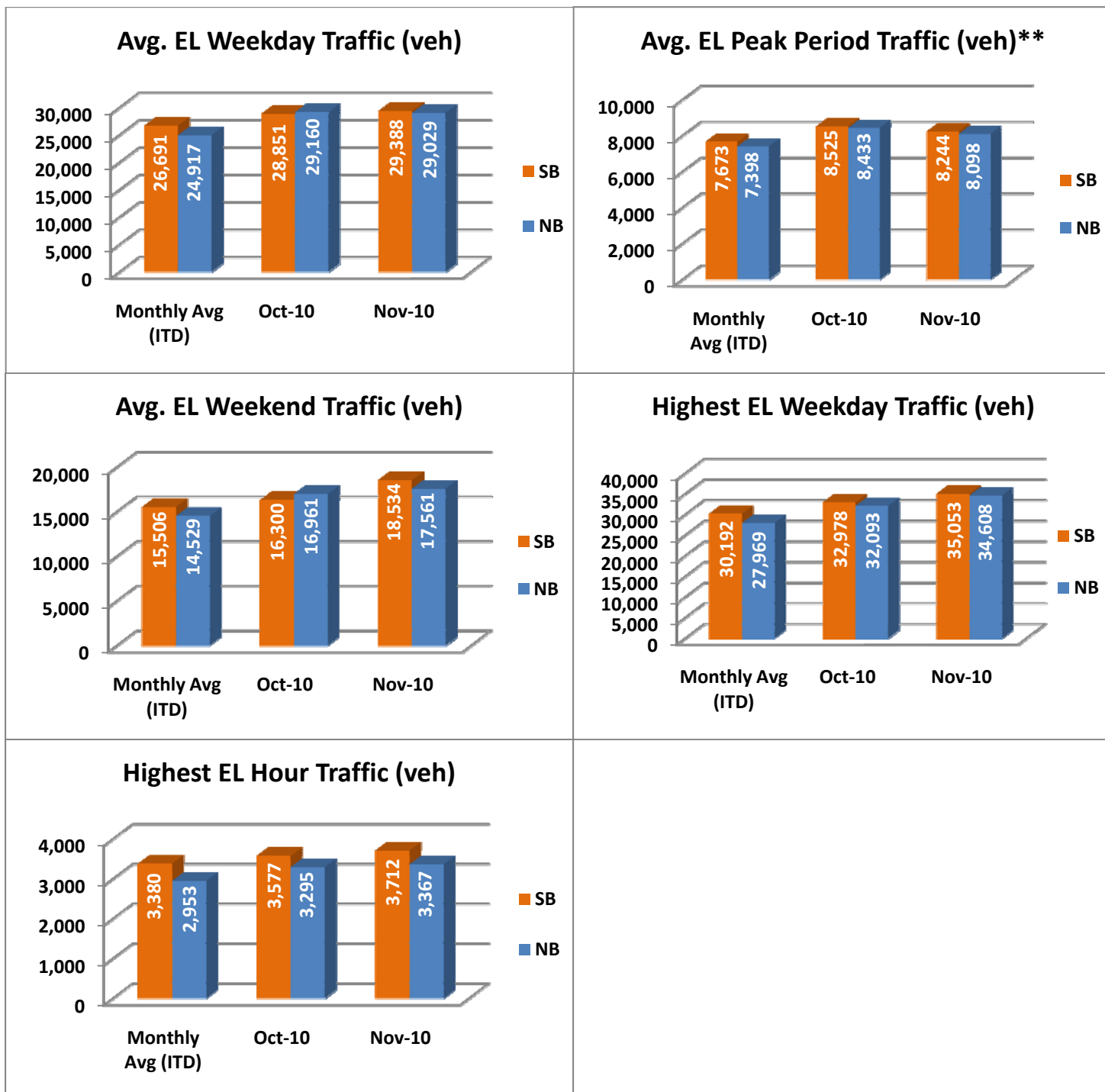


NOTE: ITD = Inception to Date



Operations/Traffic Statistics - Volume Data

** Peak Period is defined as 6-9 AM (southbound) and 4-7 PM (northbound).

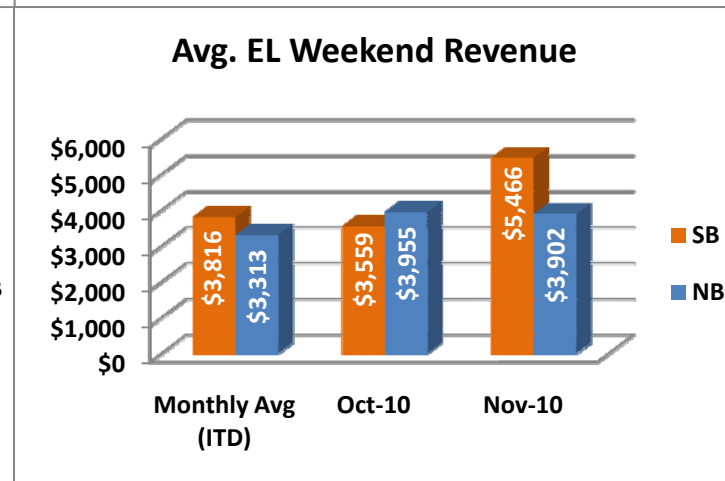
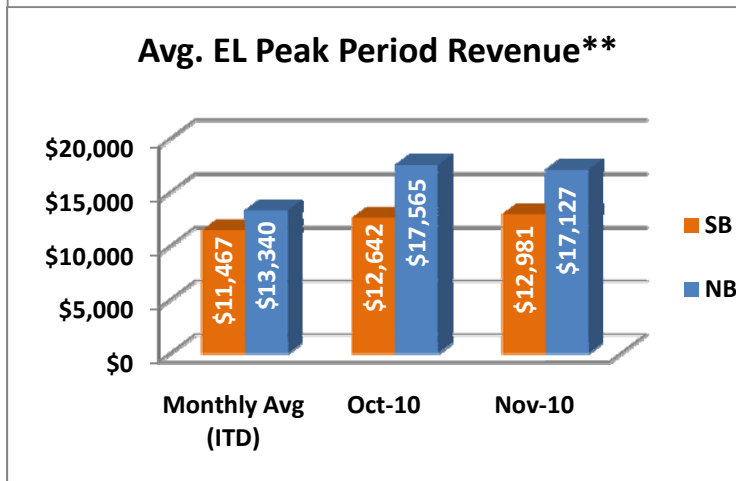
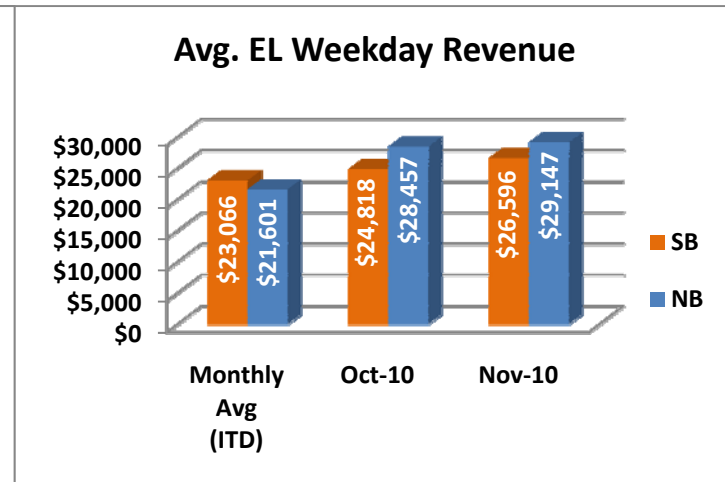
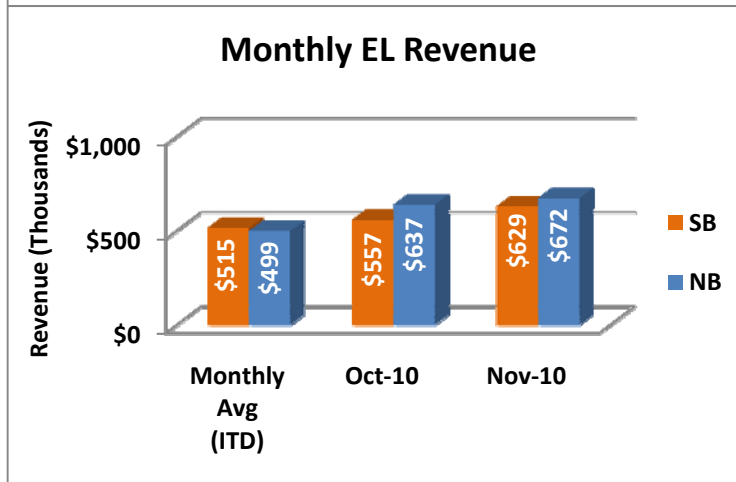
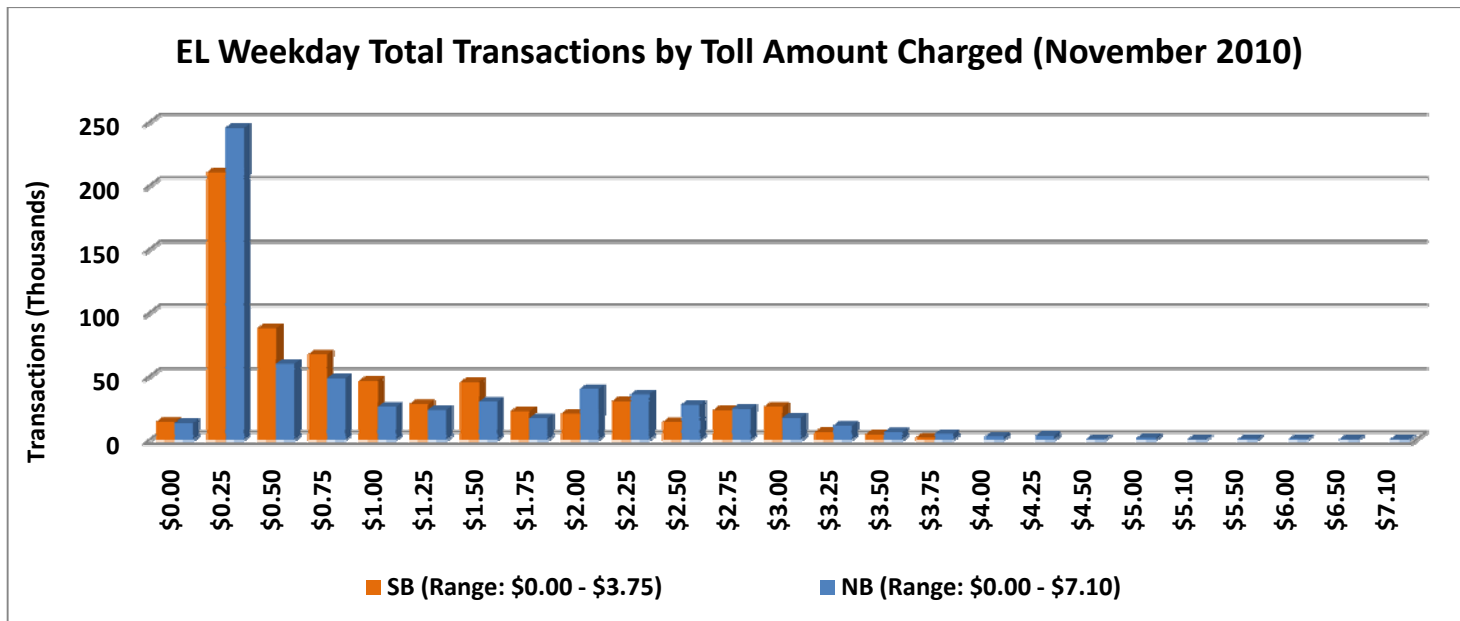


NOTE: ITD = Inception to Date



Revenue/Tolls Statistics

** Peak Period is defined as 6-9 AM (southbound) and 4-7 PM (northbound).

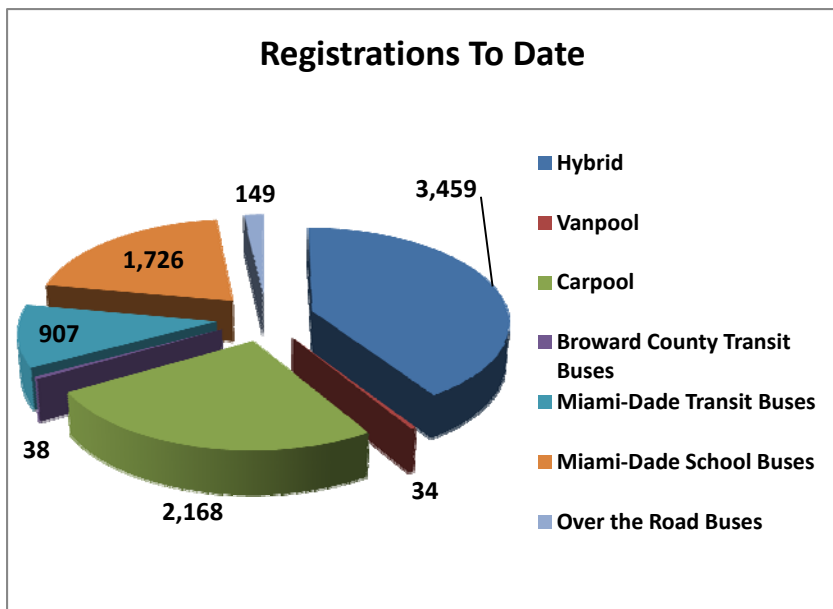


NOTE: ITD = Inception to Date

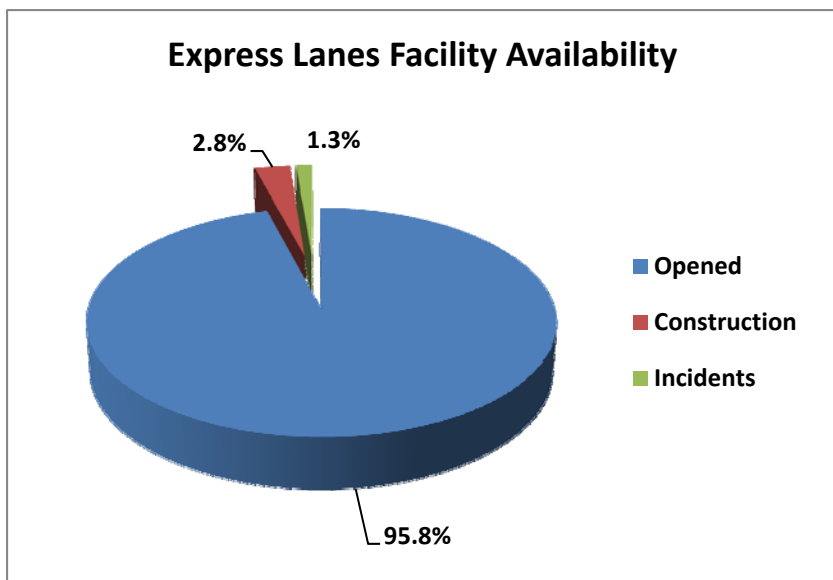


Registrations—Toll Exempt Trips

The total registrations through November 2010 increased to 8,481. *Toll Exempt Trips is not being reported this month due to uncertainties with the transit data. This is currently being investigated and will be reinserted upon confirmation.*



Facility Availability



The entire 95 Express Lanes (both directions) were open to motorists 95.8% of the time, while closed 2.8% due to planned construction and 1.3% due to non-recurring events.