



Summary of Monthly Operations – April 2013

General

In total, the 95 Express Lanes:

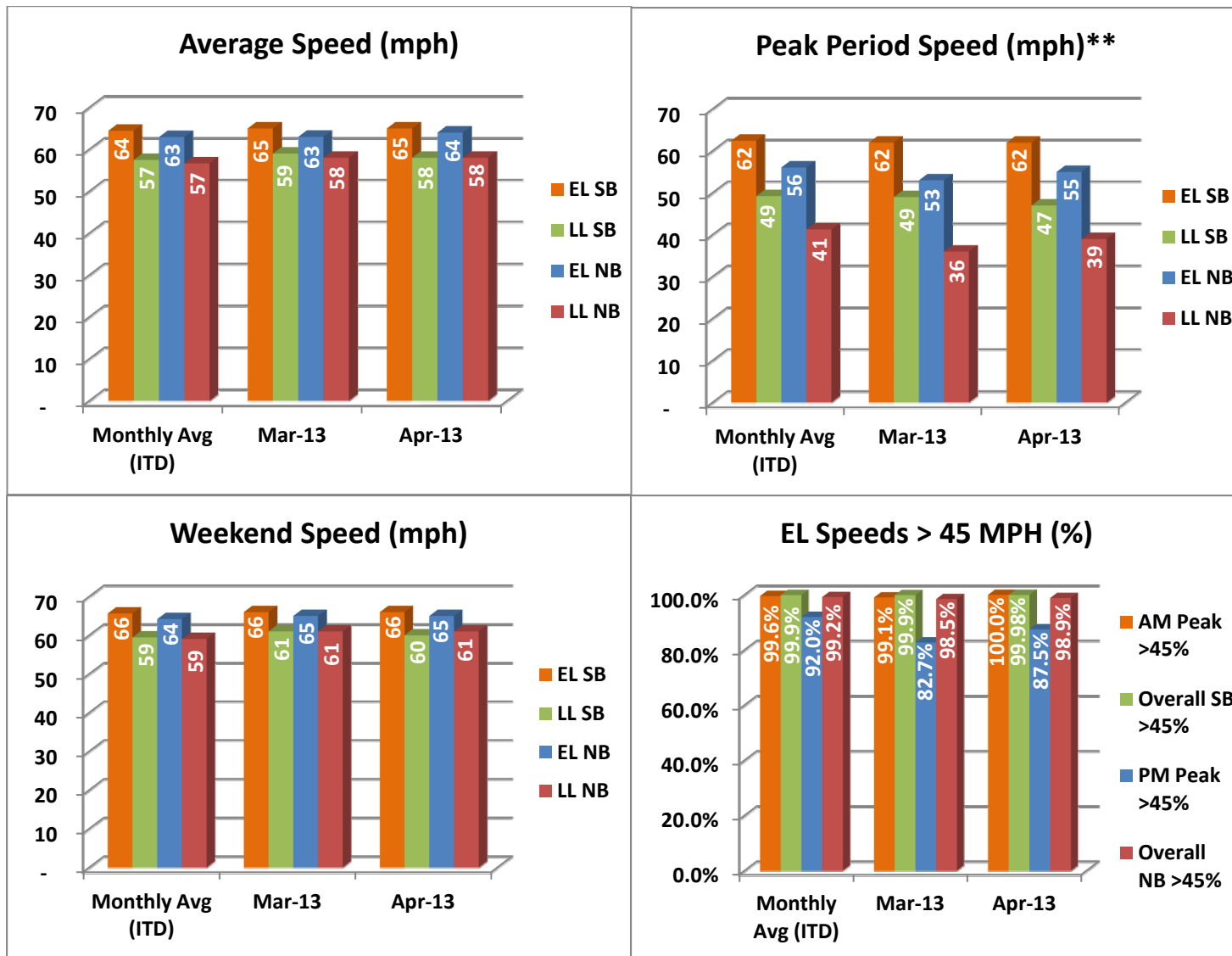
- ✓ Serviced 1,887,129 vehicle trips in April 2013 (7.5 million trips for year 2013 to date), bringing the total since opening (December 5, 2008) to approximately 73.6 million trips.
- ✓ Had estimated monthly toll revenue of \$1.78 million in April 2013 (\$7.10 million for year 2013 to date), bringing the total revenue to date to approximately \$58.7 million.
- ✓ Increased to a total of 8,958 registered vehicles, resulting in 45,707 toll exempt trips.

<u>April 2013 Statistics</u>	<u>Southbound</u>			<u>Northbound</u>		
Total Trips	963,391			923,738		
Exempt Trips	23,637			22,070		
Revenue						
	\$953,108			\$818,760		
Tolls						
- Range	\$0.00 - \$7.00			\$0.00 - \$7.00		
- Avg. Weekday	\$1.35			\$1.22		
- Avg. Peak Period**	\$2.40			\$2.86		
- Avg. Weekend	\$0.37			\$0.29		
- Avg. Off Peak	\$0.95			\$0.65		
- 85 th Percentile Weekday	\$3.00			\$2.75		
Volume (veh)						
	EL	LL		EL	LL	
- Avg. Weekday	35,257	105,543		33,978	101,489	
- Avg. Peak Period**	9,716	17,858		8,756	17,778	
Speed (mph)						
	EL	LL	Δ	EL	LL	Δ
- Avg. Overall	65	58	7	64	58	6
- Avg. Peak Period**	62	47	15	55	39	16
Operated Above 45 MPH						
	99.98%			98.9%		
Remained Open to Motorists						
	93.9%			94.6%		
Closed due to Planned Construction						
	2.6%			2.3%		
Closed due to Non-recurring Events						
	3.5%			3.1%		
<i>EL (Express Lanes); LL (Local Lanes)</i>						
<i>**Peak Period is defined as 6-9 AM (southbound) and 4-7 PM (northbound).</i>						



Operations/Traffic Statistics - Speed Data

** Peak Period is defined as 6-9 AM (southbound) and 4-7 PM (northbound).

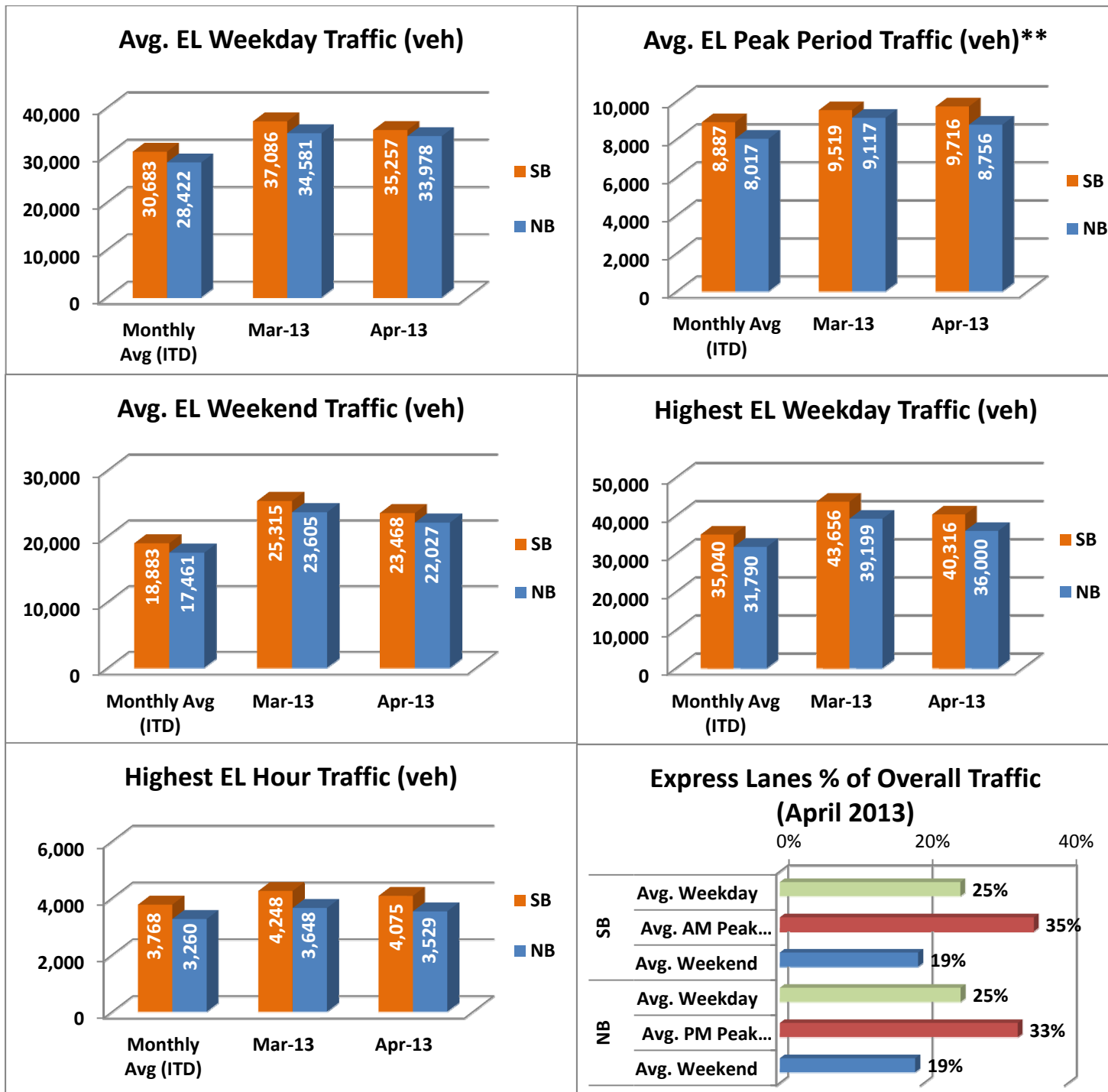


NOTE: ITD = Inception to Date



Operations/Traffic Statistics - Volume Data

** Peak Period is defined as 6-9 AM (southbound) and 4-7 PM (northbound).

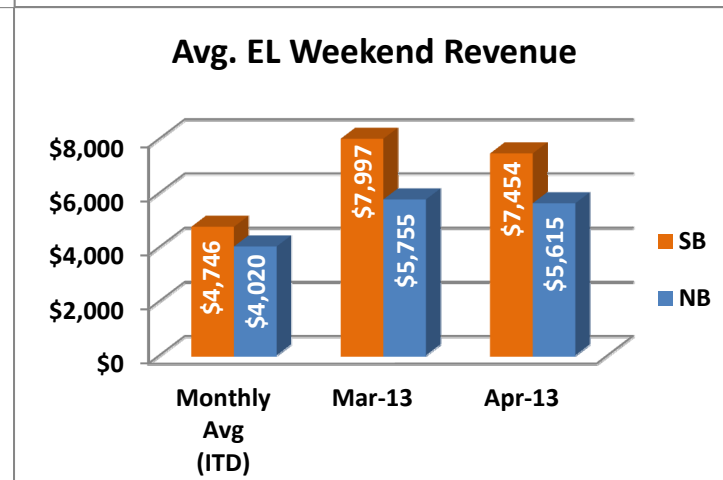
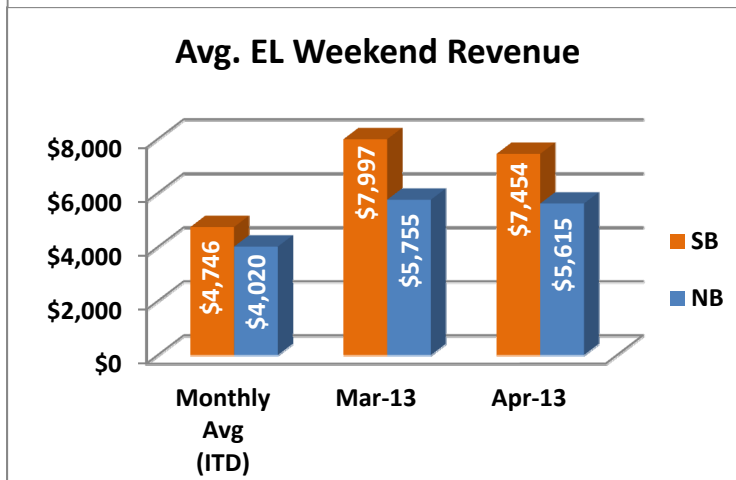
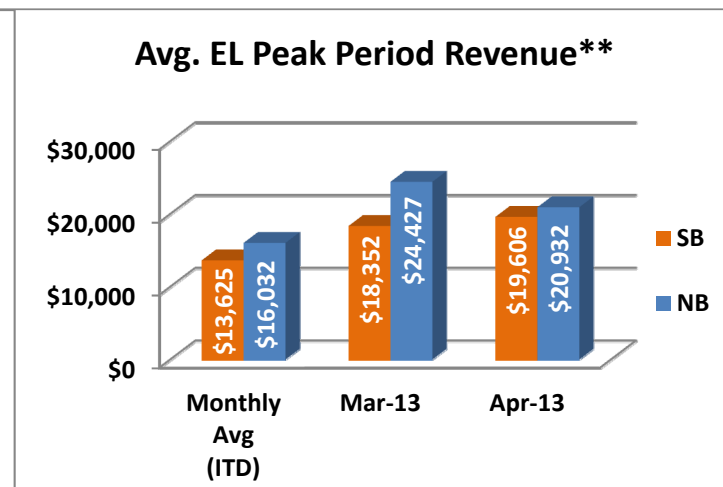
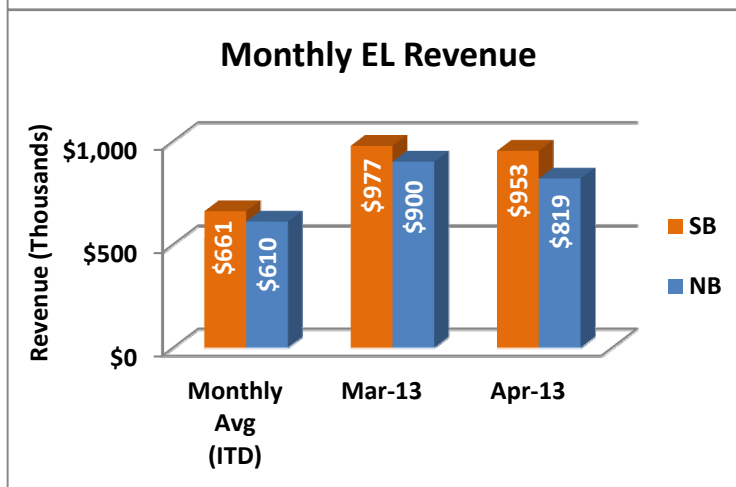
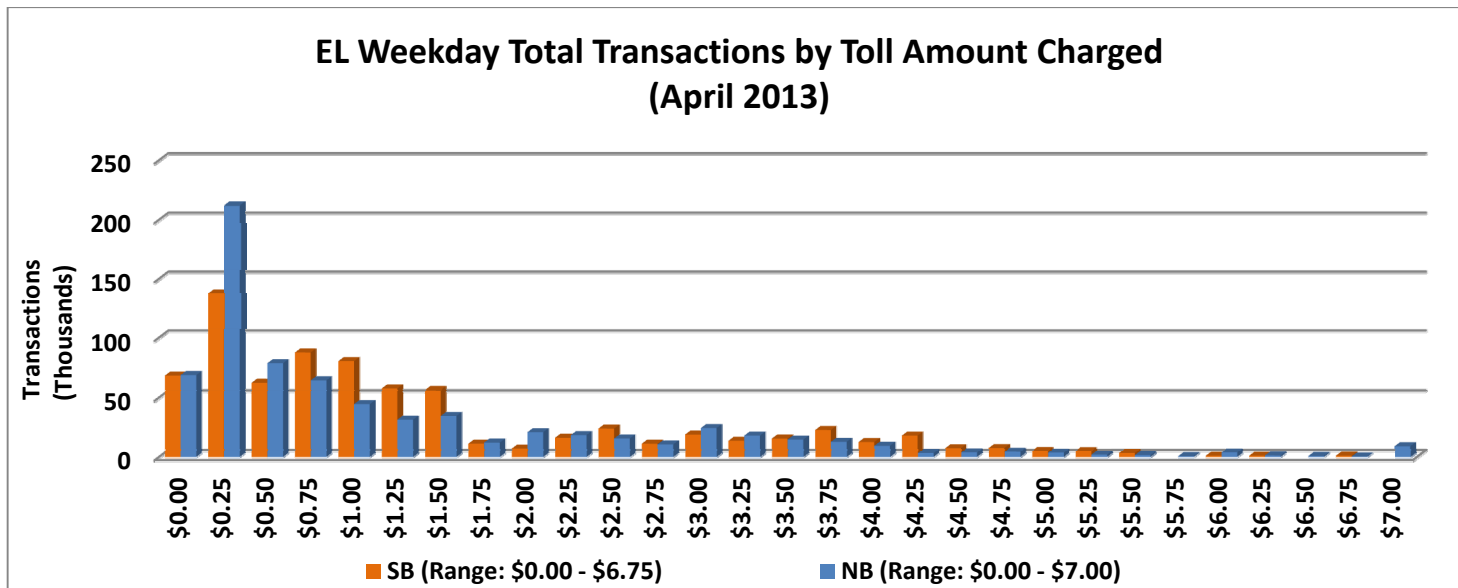


NOTE: ITD = Inception to Date



Revenue/Tolls Statistics

** Peak Period is defined as 6-9 AM (southbound) and 4-7 PM (northbound).

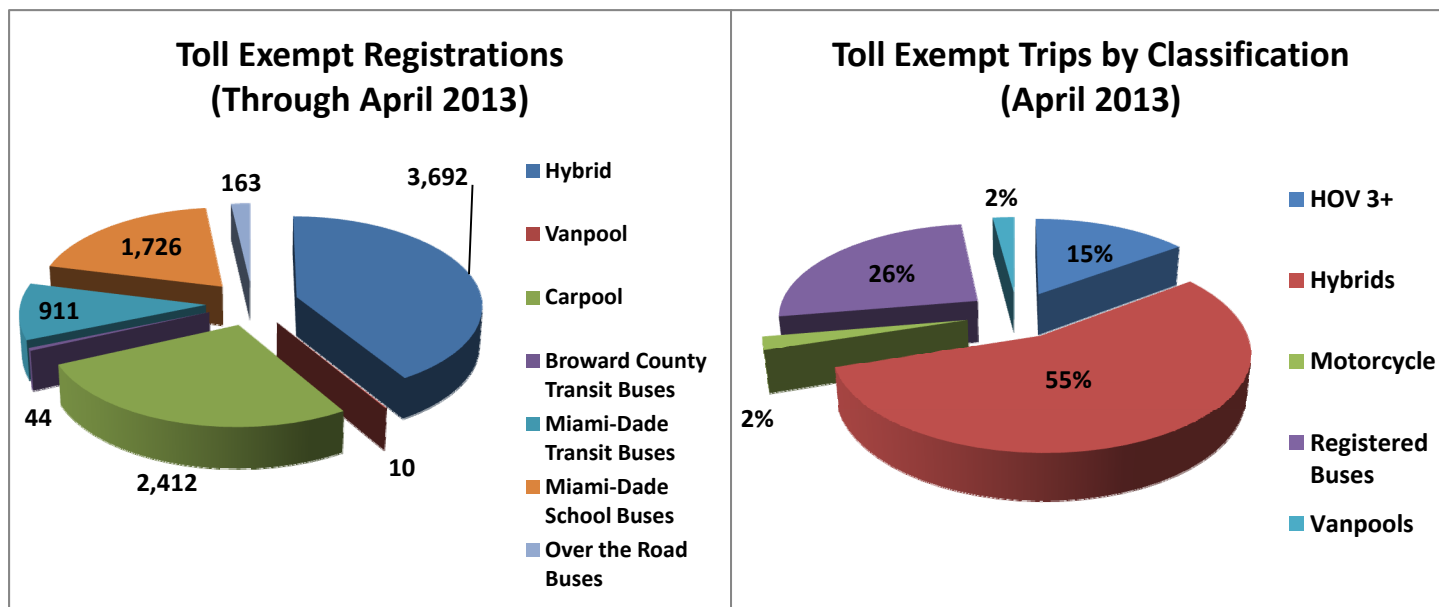


NOTE: ITD = Inception to Date

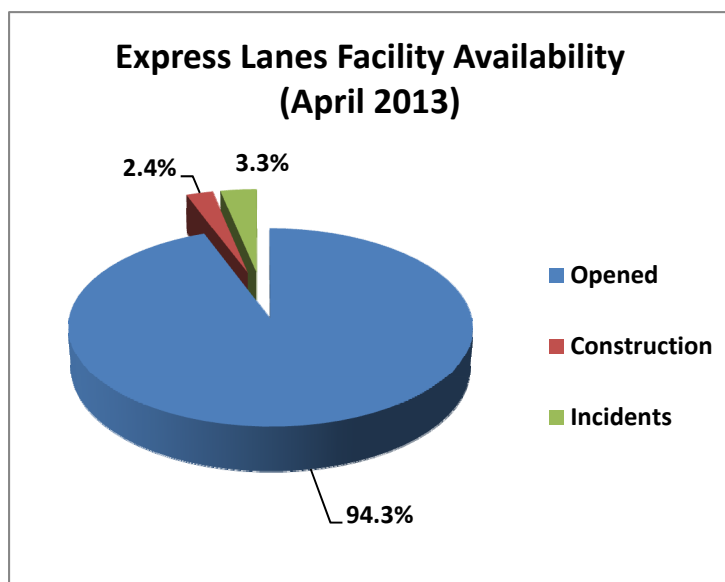


Registrations—Toll Exempt Trips

The total registrations through April 2013 increased to 8,958. The 45,707 Toll Exempt Trips for this month are shown by classification below.



Facility Availability



The entire 95 Express lanes (both directions) were open to motorists 94.3% of the time, while closed 2.4% due to 11 planned construction/maintenance events (each lasting approximately 3 hours, 12 minutes in duration, on average) and 3.3% due to 167 non-recurring events (each lasting approximately 17.0 minutes in duration, on average).