



Summary of Monthly Operations – December 2009

General

In December 2009 the 95 Express Lanes:

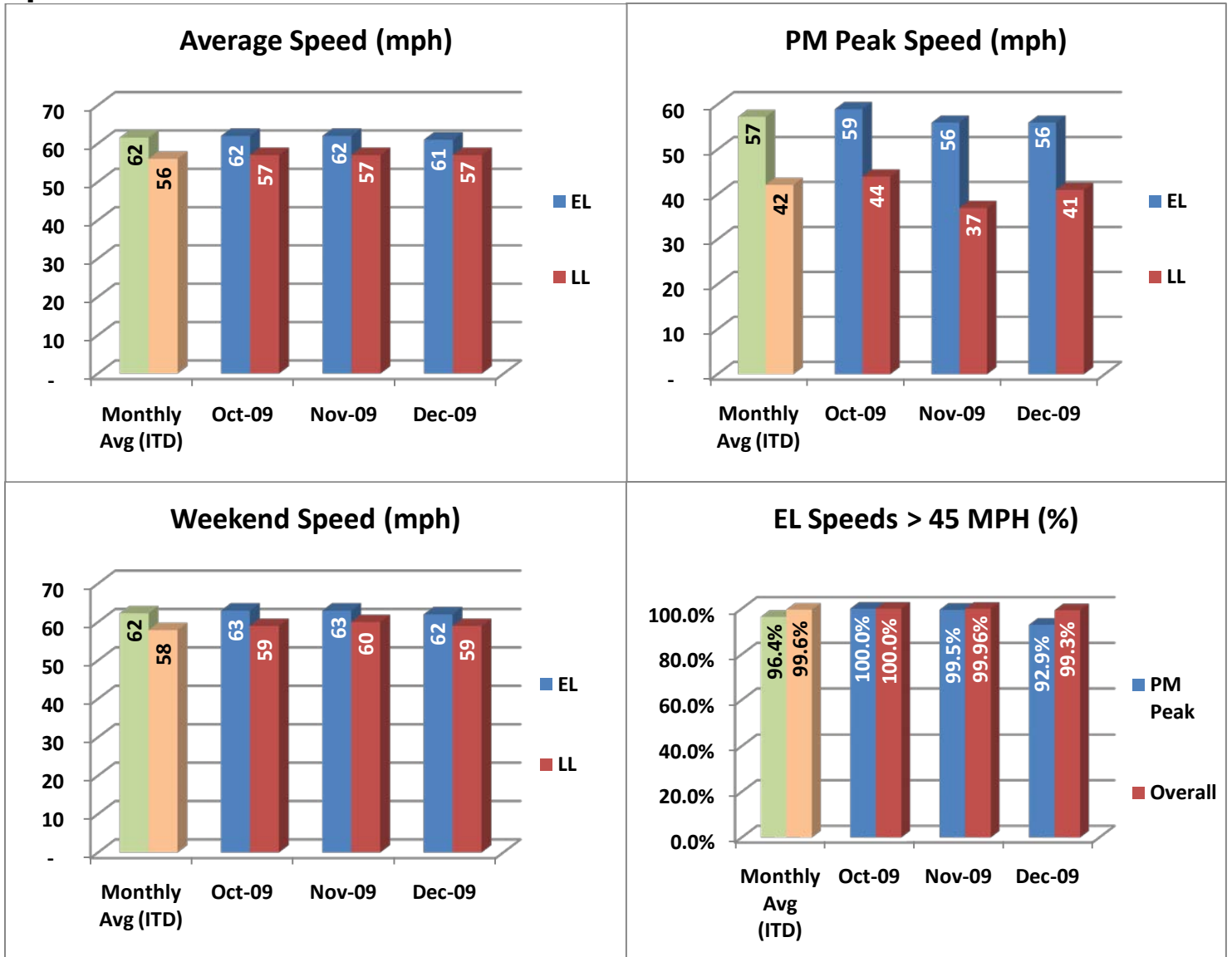
- ✓ Serviced 648,430 vehicle trips bringing the total since opening (December 5, 2008) to 7,903,583.
- ✓ Had estimated monthly toll revenue of \$472,151 bringing the total revenue to date to approximately \$5.25 million.
- ✓ Tolls ranged from \$0.25 to the highest toll for the month of \$3.75.
 - Average weekday toll - \$0.89
 - Average PM peak period (4pm to 7pm) toll - \$1.88
 - Average weekend toll - \$0.25
 - Average off-peak weekday toll - \$0.47
 - Approximately 85% of the customers were charged \$1.50 or less.
- ✓ Average weekday traffic volume was 23,207, a 0.4% decrease over November.
- ✓ Average PM Peak Period (4pm to 7pm) traffic volume was 6,738, a 5.6% decrease over November.
- ✓ Operated 15 mph above the local lanes (LL) during the PM peak period (4pm to 7pm) and 4 mph greater overall.
- ✓ Remained open to motorist 94.4% of the time, while closed 4.8% due to planned construction and 0.8% due to non-recurring events.
- ✓ Operated above 45 mph 99.3% of the time.
- ✓ Reached a total of 7,801 registered vehicles, and for the first time includes Broward County Transit (BCT) registering buses for the cross-county service.

December 2009 Statistics	Speed (mph)			Volume (vpd)	
	EL	LL	Δ	EL	LL
Average Weekday	-	-	-	23,207	100,052
Average PM Peak Period	56	41	15	6,738	17,538
Average Weekend Day	62	59	3	14,335	90,618



Operations/Traffic Statistics

Speed Data



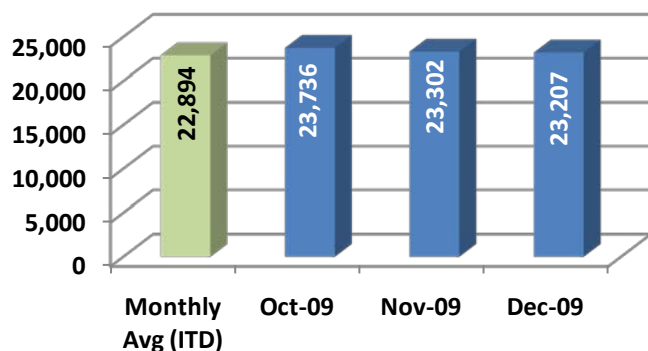
NOTE: ITD = Inception to Date



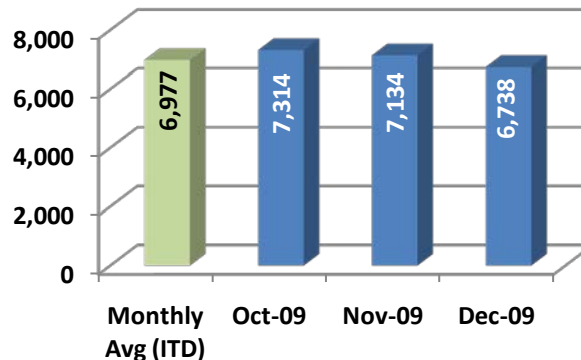
Operations/Traffic Statistics

Volume Data

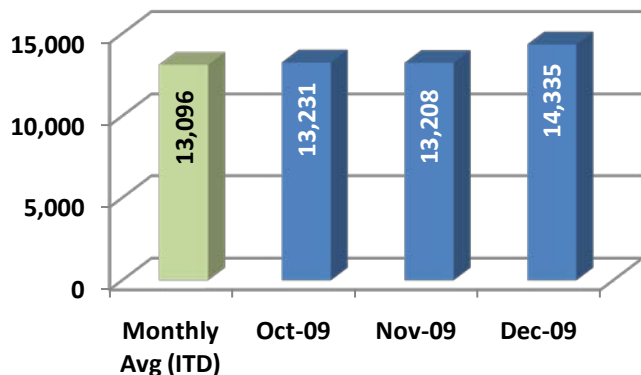
Avg. EL Weekday Traffic (veh)



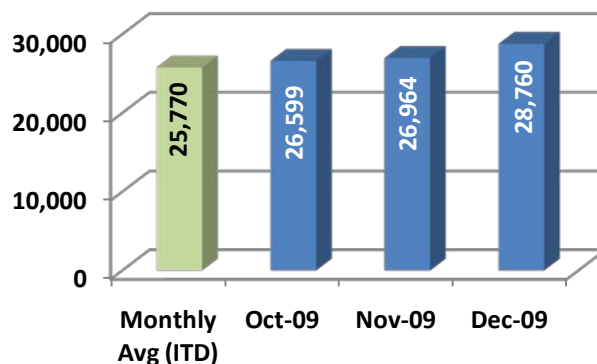
Avg. EL PM Peak Traffic (veh)



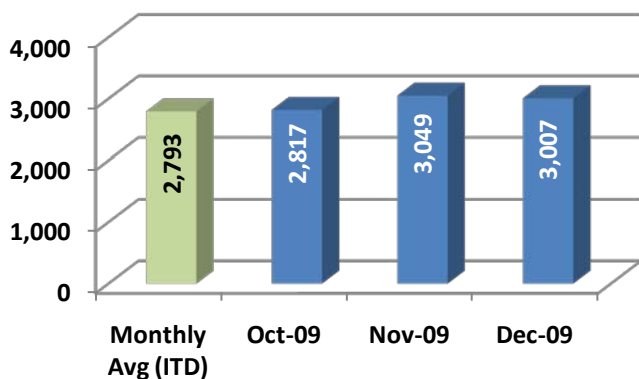
Avg. EL Weekend Traffic (veh)



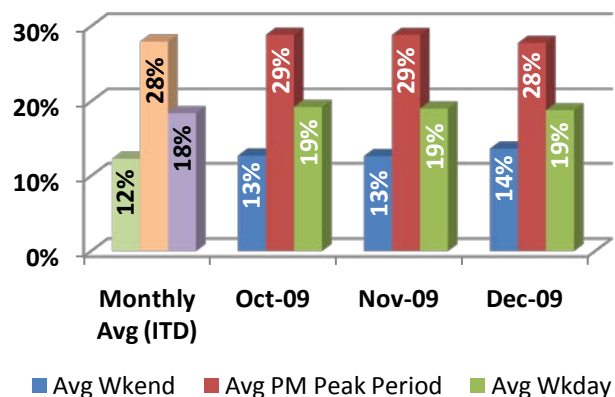
Highest EL Weekday Traffic (veh)



Highest EL Hour Traffic (veh)



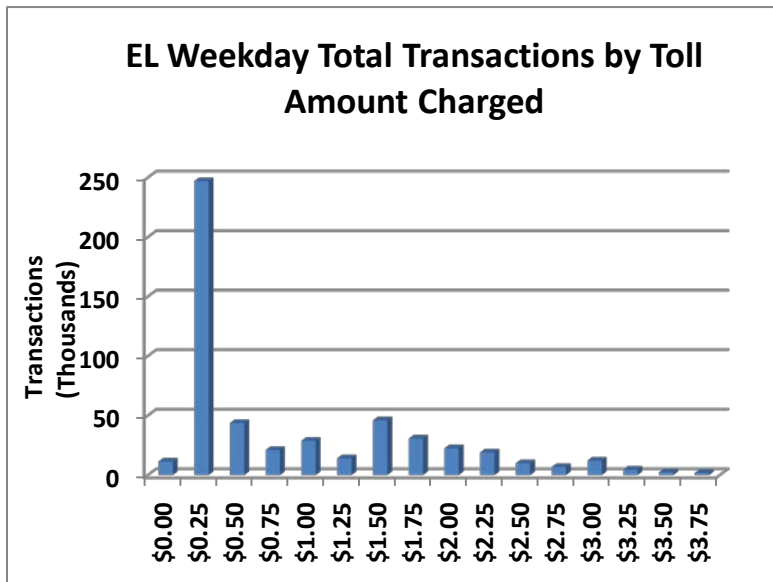
EL % of Overall Traffic



NOTE: ITD = Inception to Date



Revenue/Tolls Statistics



Toll ranges \$0.25 to \$3.75

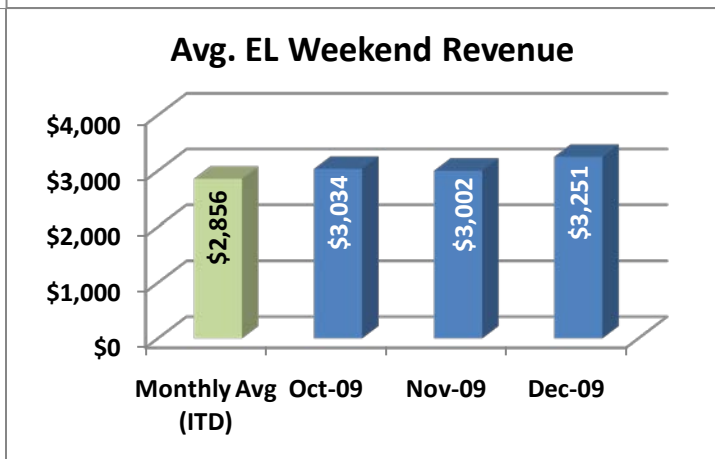
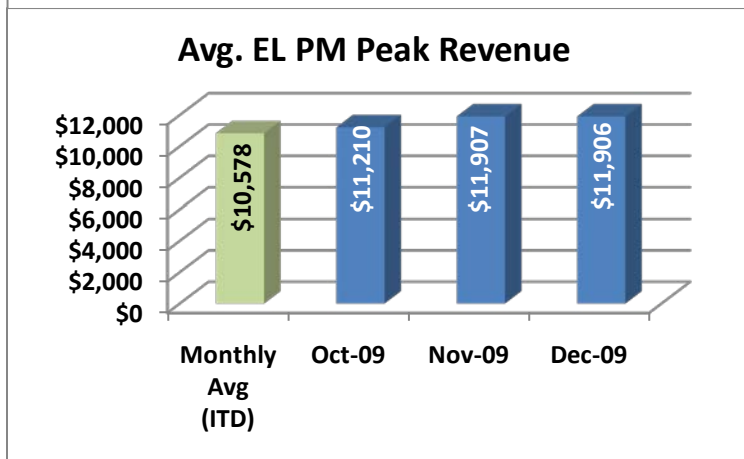
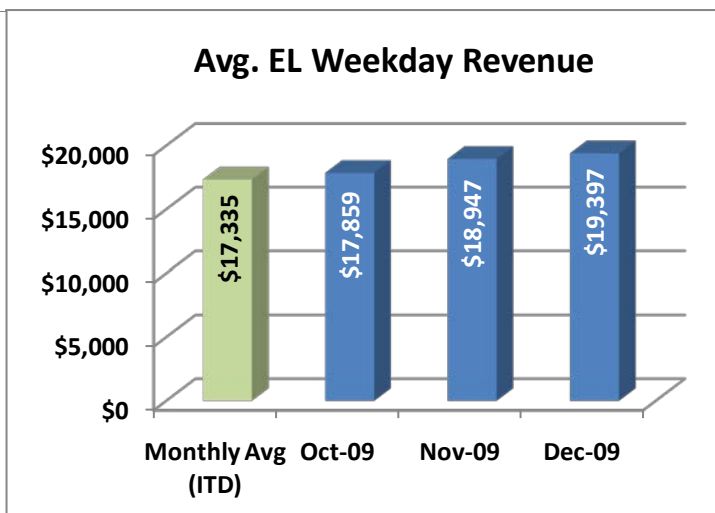
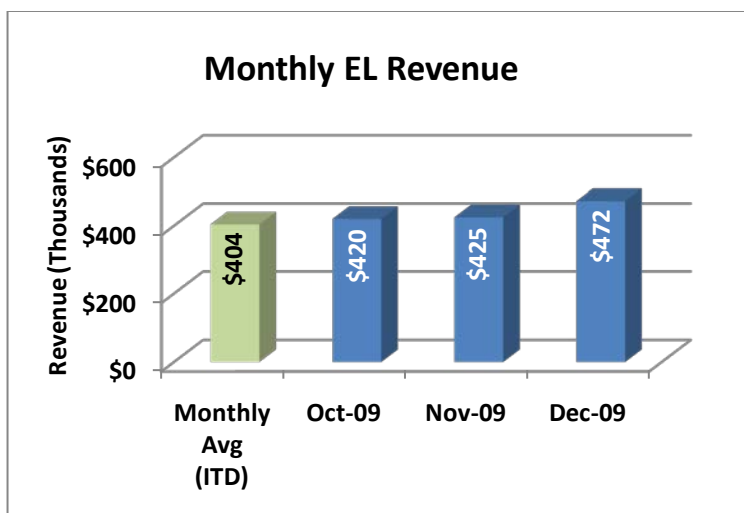
Average weekday toll charged was \$0.89

Average weekday PM peak period (4-7) toll charged was \$1.88

Average weekend toll charged was \$0.25

Average weekday off-peak hours (all hours except for 4-7) toll charged was \$0.47

Most frequently charged weekday PM peak period (4-7) toll rate was \$1.50

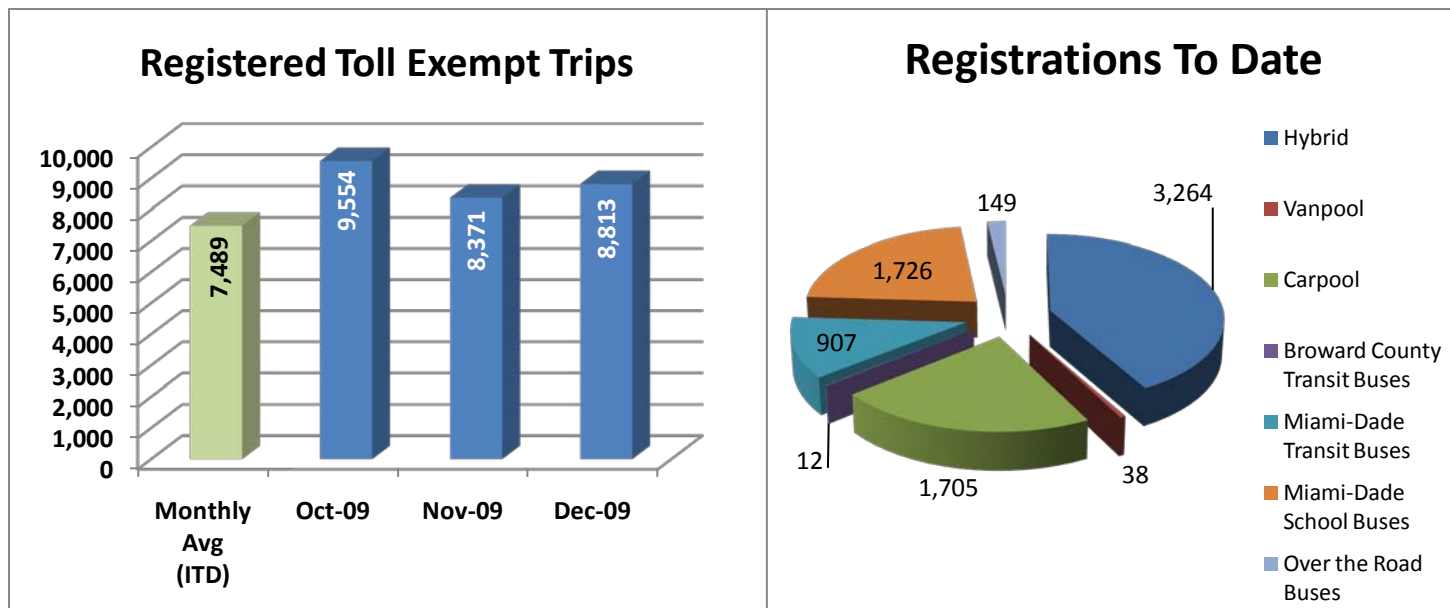


NOTE: ITD = Inception to Date



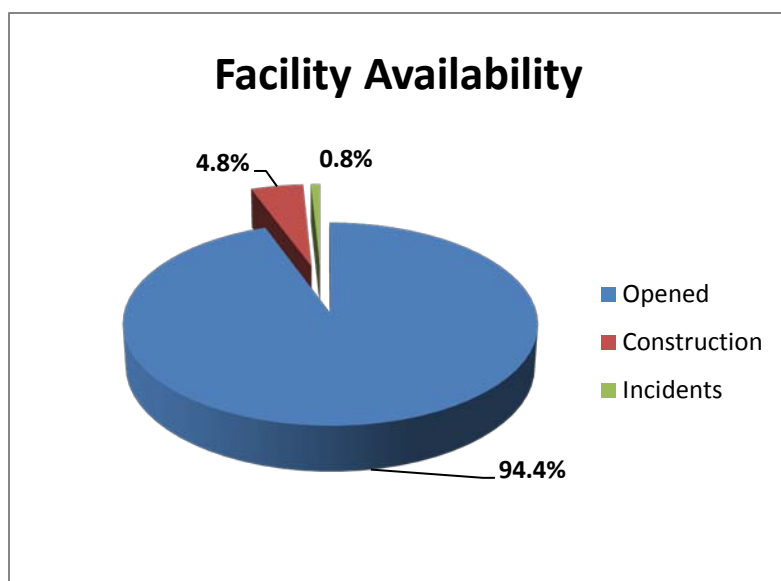
Registrations—Toll Exempt Trips

The total registrations through December 2009 was 7,801. There were 8,813 registered toll exempt vehicle trips for the month of December.



NOTE: ITD = Inception to Date

Facility Availability



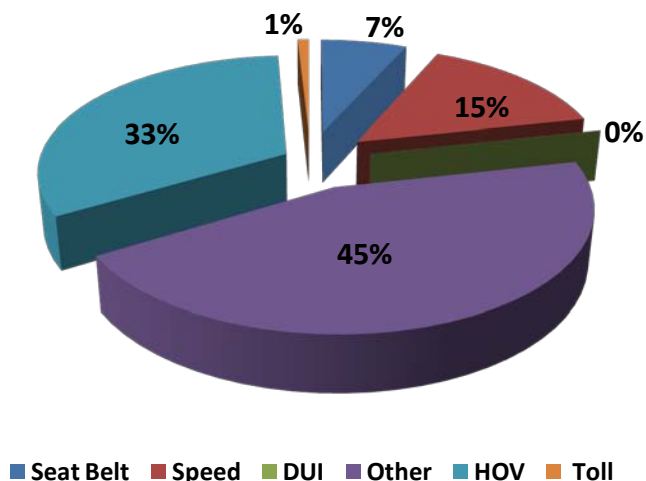
The 95 Express Lanes were open to motorist 94.4% of the time, while closed 4.8% due to planned construction and 0.8% due to non-recurring events.



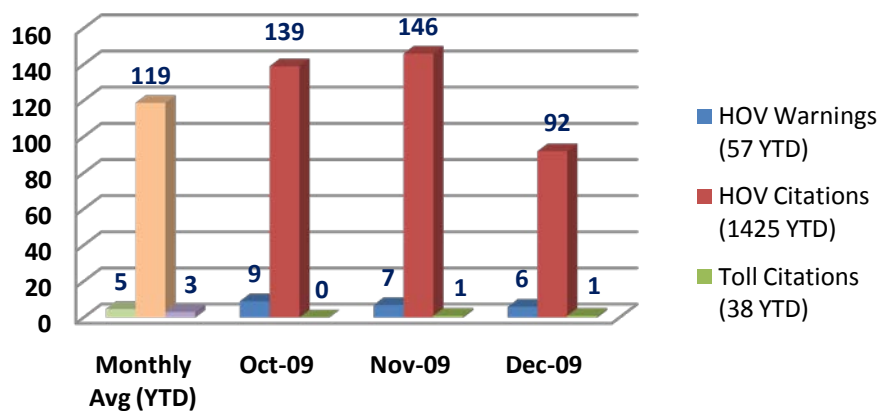
Enforcement

The Florida Highway Patrol (FHP) conducts visual enforcement with the 95 Express Lanes. The first graph represents the total percentage breakdown of all citation categories for calendar year 2009. The second graph represents monthly High Occupancy Vehicle (HOV) and Toll violations.

FHP Citation Types (YTD)



Monthly HOV and Toll Violations (by FHP)



NOTE: YTD = Year to Date