



Summary of Monthly Operations – January 2010

General

On January 15, 2010 the 95 Express Lanes began its southbound operations. This monthly report has been modified to reflect both directions of traffic with all corresponding performance measures. In total, the 95 Express Lanes:

- ✓ Serviced 1,015,217 vehicle trips in January (and in 2010 to date), bringing the total since opening (December 5, 2008) to approximately 9.92 million.
- ✓ Had estimated monthly toll revenue of \$740,048 in January (and in 2010 to date) bringing the total revenue to date to approximately \$5.99 million.
- ✓ Reached a total of 7,961 registered vehicles.

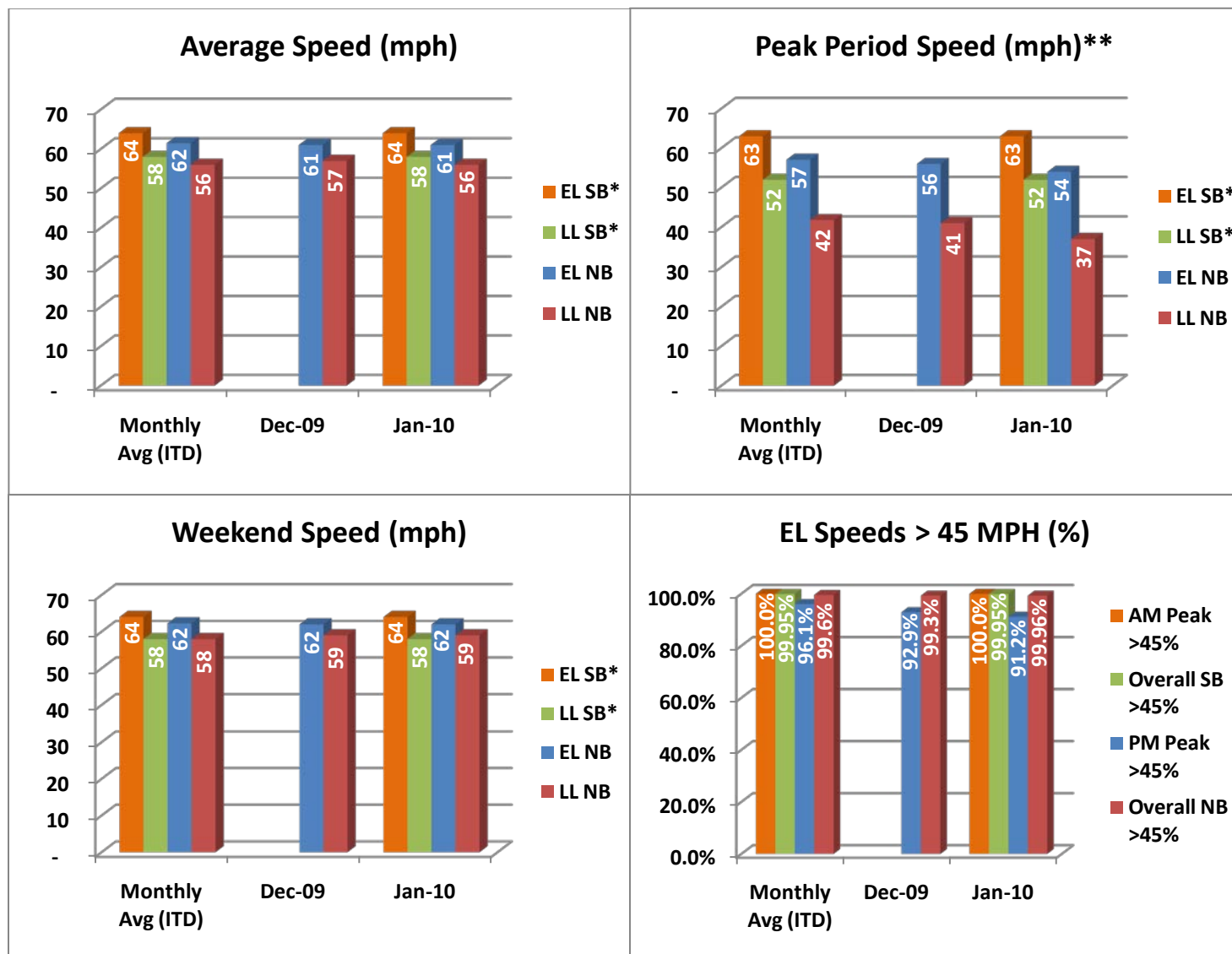
<u>January 2010 Statistics</u>	<u>Southbound*</u> (*From Jan. 15 th Only)			<u>Northbound</u>		
Trips	341,271			673,946		
Revenue	\$220,124			\$519,923		
Tolls						
- Range	\$0.00 - \$2.50			\$0.00 - \$5.00		
- Avg. Weekday	\$0.84			\$1.00		
- Avg. Peak Period**	\$1.40			\$2.04		
- Avg. Weekend	\$0.25			\$0.25		
- Avg. Off Peak	\$0.62			\$0.55		
- 85 th Percentile (or less)	\$1.50			\$1.75		
Volume	EL	LL		EL	LL	
- Avg. Weekday	23,751	113,490		24,984	99,720	
- Avg. Peak Period**	6,854	20,076		7,461	17,383	
Speed	EL	LL	Δ	EL	LL	Δ
- Avg. Overall	64	58	6	61	56	5
- Avg. Peak Period**	63	52	11	54	37	17
Operated Above 45 MPH	99.95%			99.3%		
Remained Open to Motorists	89.3%			88.6%		
Closed due to Planned Construction	10.3%			10.2%		
Closed due to Non-recurring Events	0.4%			1.2%		
<i>EL (Express Lanes); LL (Local Lanes)</i>						
<i>**Peak Period is defined as 6-9 AM (southbound) and 4-7 PM (northbound).</i>						



Operations/Traffic Statistics - Speed Data

*All southbound data reflects activity beginning January 15, 2010.

** Peak Period is defined as 6-9 AM (southbound) and 4-7 PM (northbound).



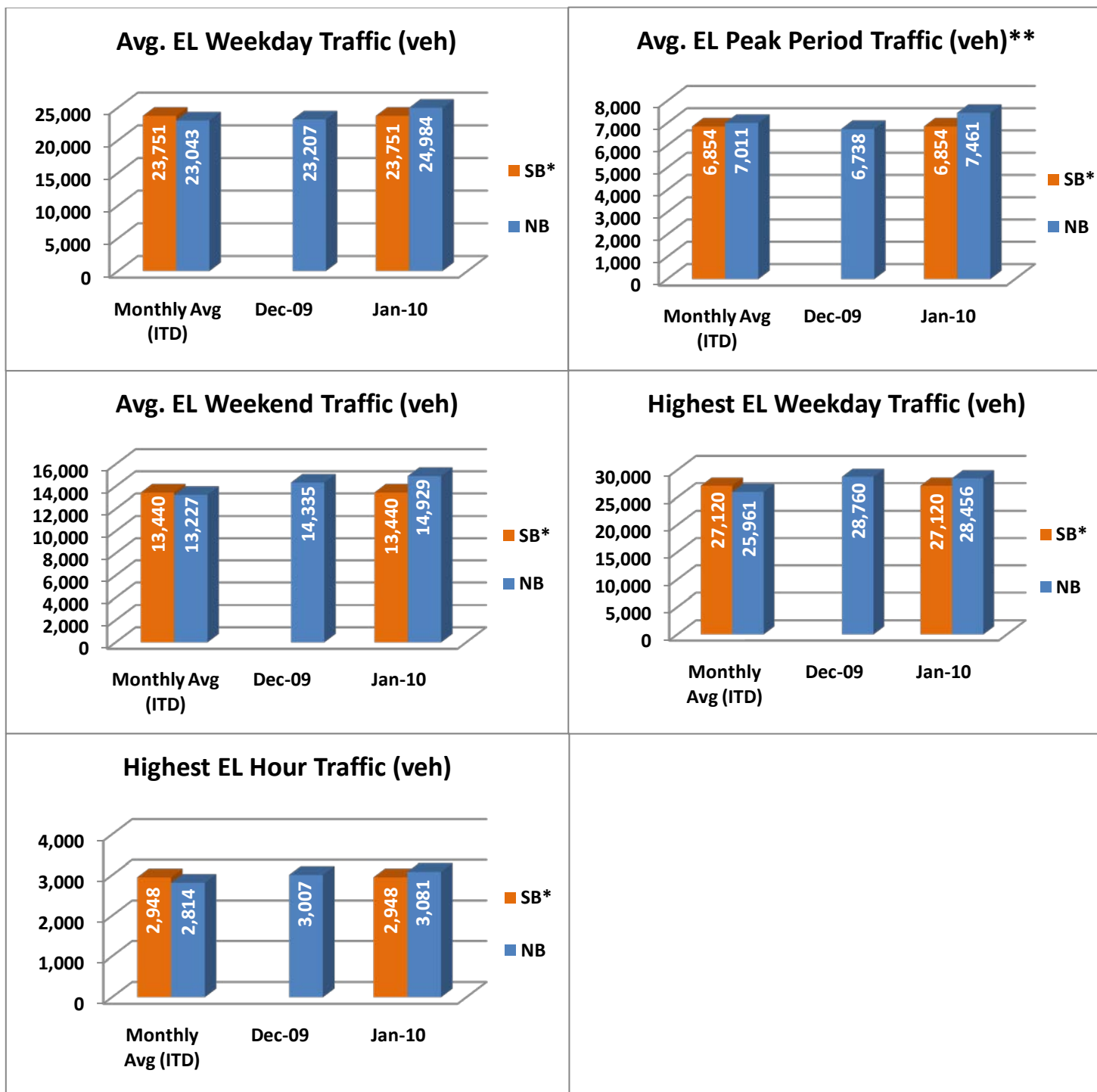
NOTE: ITD = Inception to Date



Operations/Traffic Statistics - Volume Data

*All southbound data reflects activity beginning January 15, 2010.

** Peak Period is defined as 6-9 AM (southbound) and 4-7 PM (northbound).



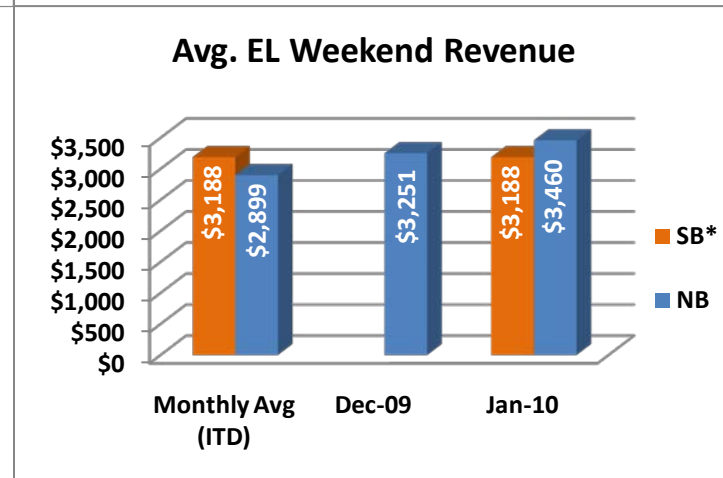
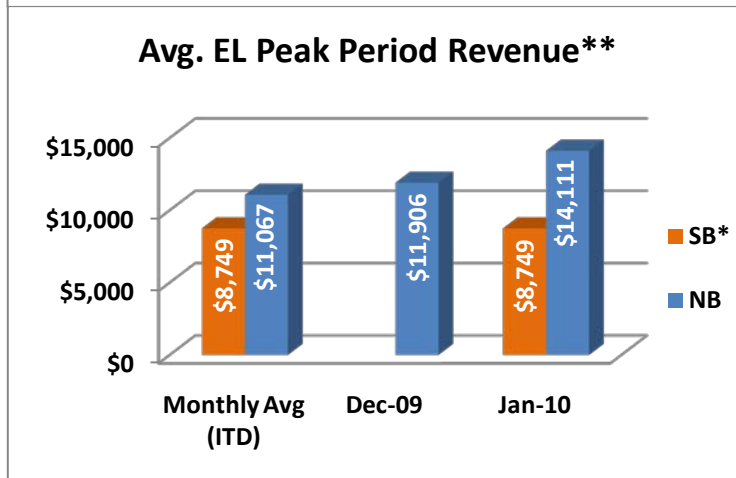
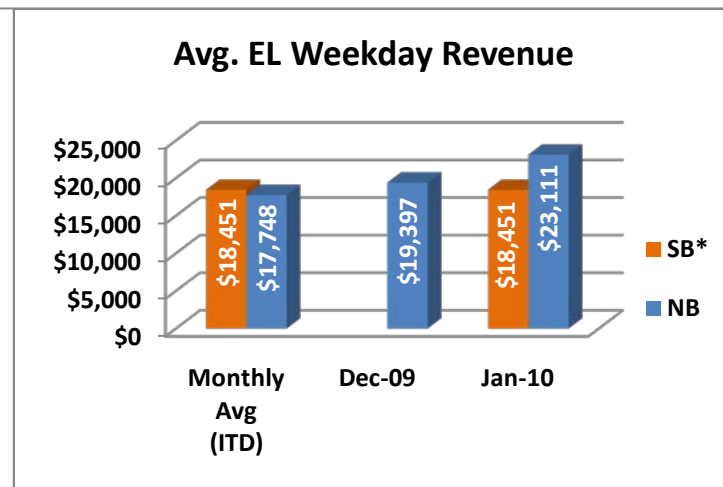
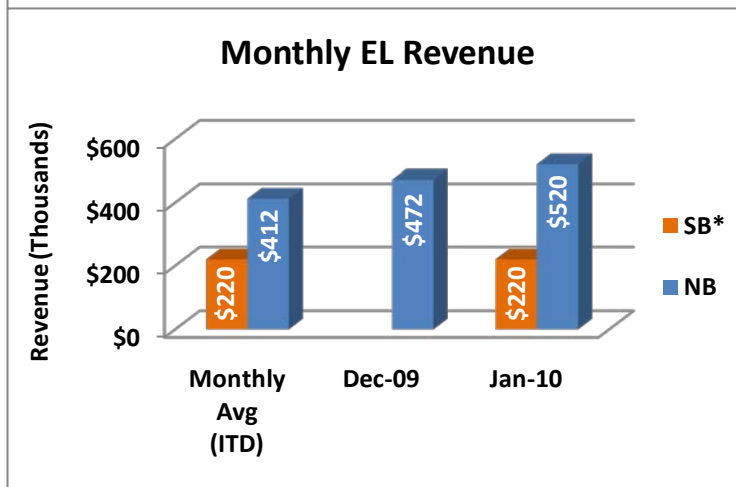
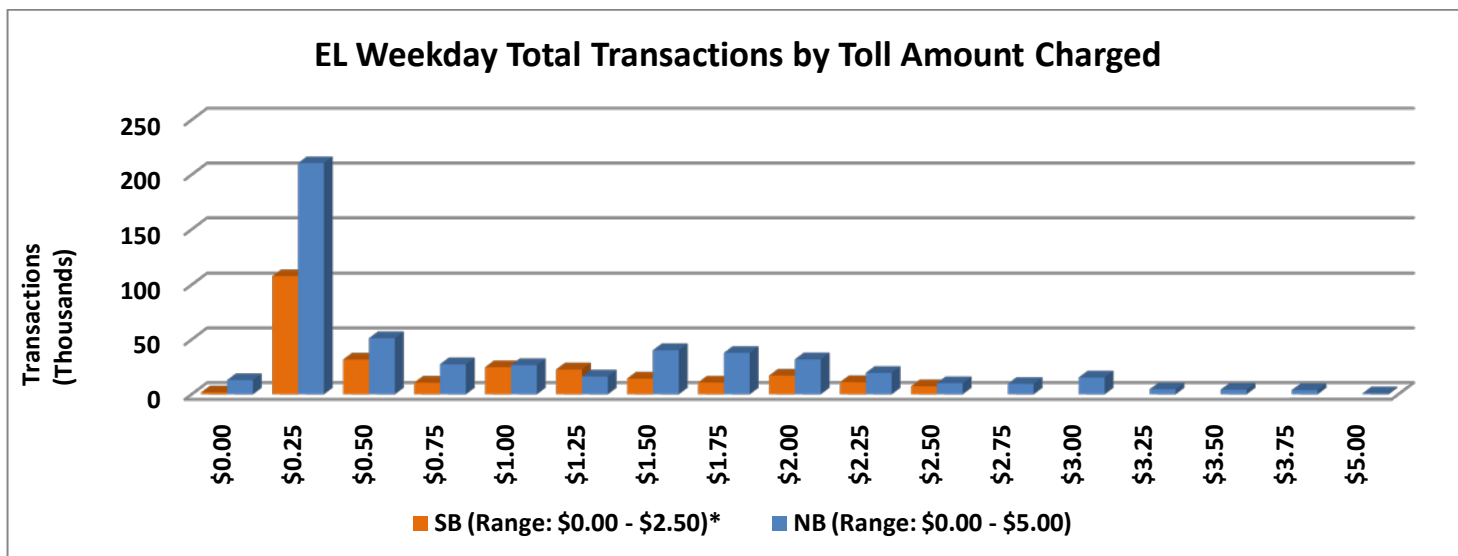
NOTE: ITD = Inception to Date



Revenue/Tolls Statistics

*All southbound data reflects activity beginning January 15, 2010.

** Peak Period is defined as 6-9 AM (southbound) and 4-7 PM (northbound).



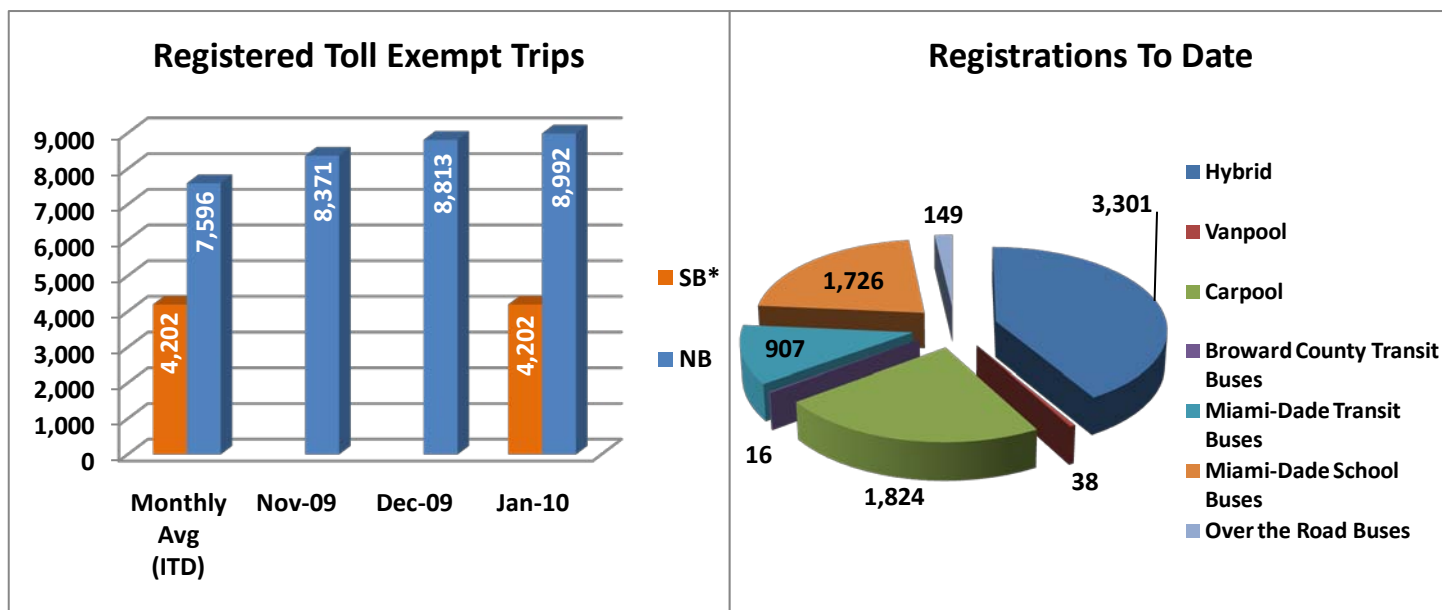
NOTE: ITD = Inception to Date



Registrations—Toll Exempt Trips

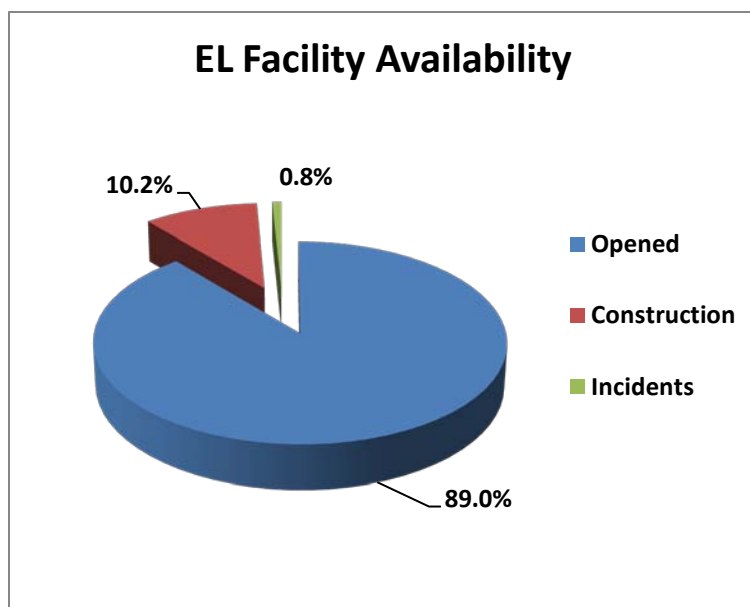
The total registrations through January 2010 was 7,961. There were 13,194* registered toll exempt vehicle trips for the month of January.

*All southbound data reflects activity beginning January 15, 2010.



NOTE: ITD = Inception to Date

Facility Availability



The entire 95 Express Lanes (both directions) were open to motorists 89.0%* of the time, while closed 10.2%* due to planned construction and 0.8%* due to non-recurring events.

*Please note that this includes southbound data, which reflects activity beginning January 15, 2010.



Enforcement

This section is being revised. An updated report will be posted at such time that this section is complete.