



## Summary of Monthly Operations – May 2010

### General

This monthly report the values for 95 Express measures for both directions of travel for May, 2010.

In total, the 95 Express Lanes:

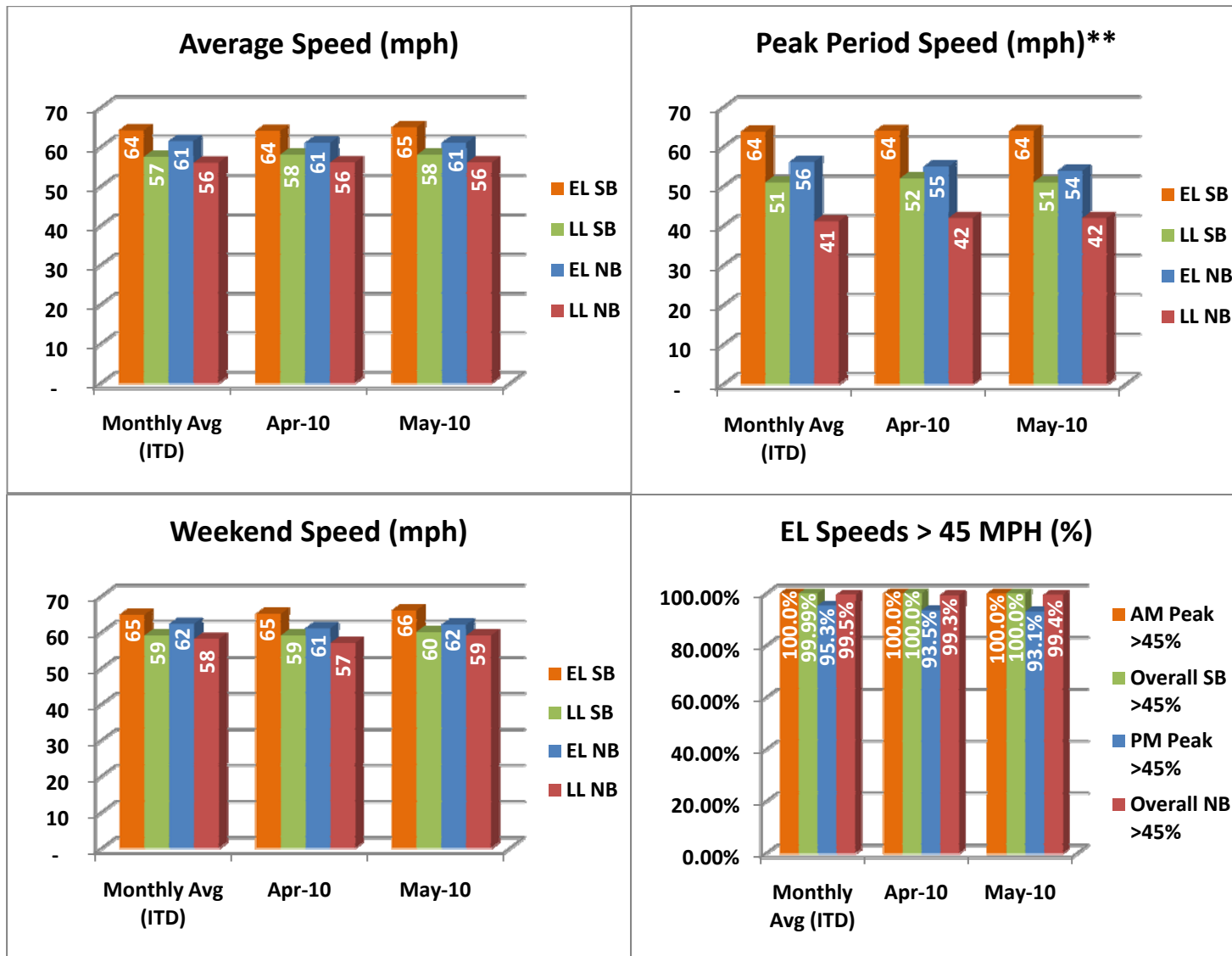
- ✓ Serviced 1,427,971 vehicle trips in May (6.78 million in 2010 to date), bringing the total since opening (December 5, 2008) to approximately 14.7 million trips.
- ✓ Had estimated monthly toll revenue of \$1.09 million in May (\$5.48 million in 2010 to date) bringing the total revenue to date to approximately \$10.7 million.
- ✓ Increased to a total of 8,364 registered vehicles.

<u>May 2010 Statistics</u>	<u>Southbound</u>		<u>Northbound</u>			
<b>Trips</b>	710,577		717,394			
<b>Revenue</b>	\$502,885		\$587,939			
<b>Tolls</b>	\$0.00 - \$3.25		\$0.00 - \$5.00			
- Range	\$0.91		\$1.06			
- Avg. Weekday	\$1.66		\$2.27			
- Avg. Peak Period**	\$0.24		\$0.24			
- Avg. Weekend	\$0.52		\$0.56			
- Avg. Off Peak	\$1.75		\$2.25			
- 85 <sup>th</sup> Percentile Weekday						
<b>Volume (veh)</b>	<b>EL</b>	<b>LL</b>	<b>EL</b>	<b>LL</b>		
- Avg. Weekday	26,434	113,553	26,580	97,963		
- Avg. Peak Period**	7,623	20,417	7,503	17,885		
<b>Speed (mph)</b>	<b>EL</b>	<b>LL</b>	<b>Δ</b>	<b>EL</b>	<b>LL</b>	<b>Δ</b>
- Avg. Overall	65	58	7	61	56	5
- Avg. Peak Period**	64	51	13	54	42	12
<b>Operated Above 45 MPH</b>	100.0%		99.4%			
<b>Remained Open to Motorists</b>	95.1%		95.4%			
<b>Closed due to Planned Construction</b>	3.9%		2.4%			
<b>Closed due to Non-recurring Events</b>	0.9%		2.2%			
<i>EL (Express Lanes); LL (Local Lanes)</i>						
<i>**Peak Period is defined as 6-9 AM (southbound) and 4-7 PM (northbound).</i>						



## Operations/Traffic Statistics - Speed Data

\*\* Peak Period is defined as 6-9 AM (southbound) and 4-7 PM (northbound).

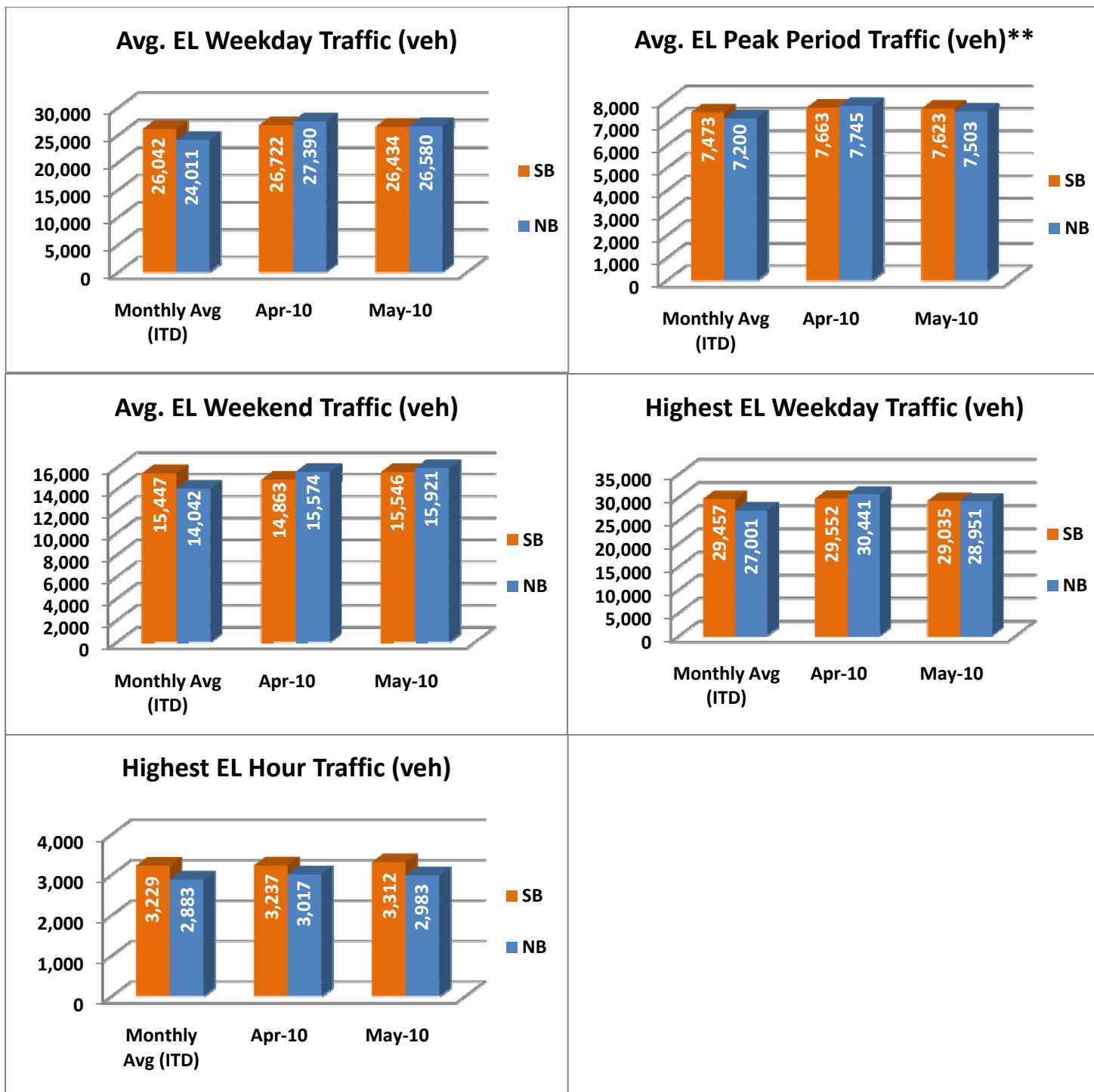


NOTE: ITD = Inception to Date



## Operations/Traffic Statistics - Volume Data

\*\* Peak Period is defined as 6-9 AM (southbound) and 4-7 PM (northbound).

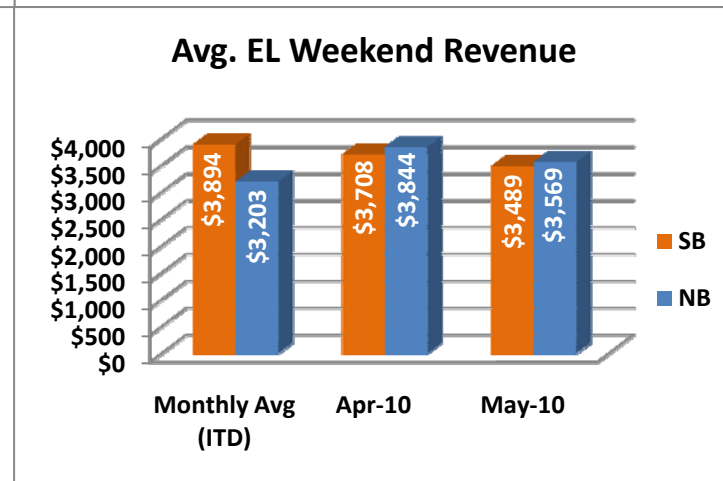
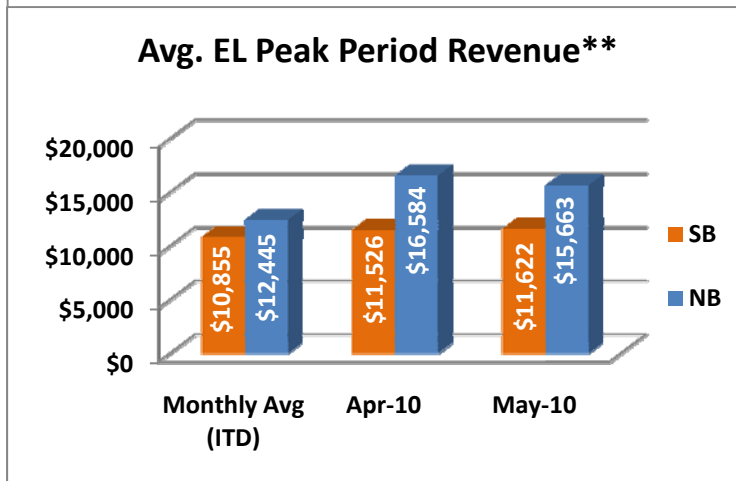
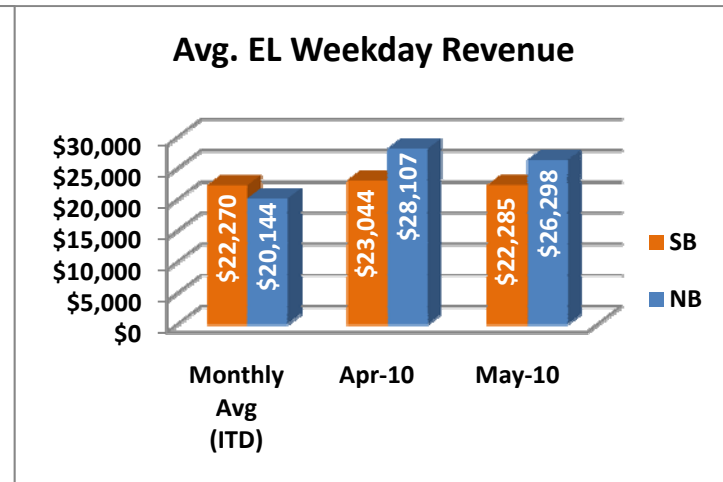
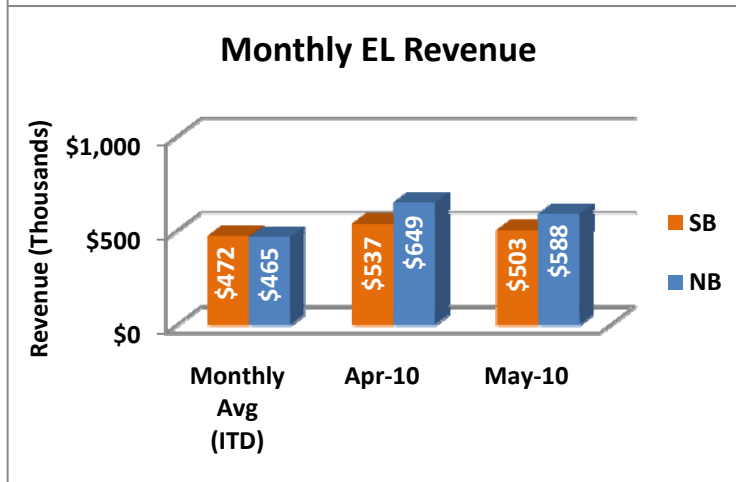
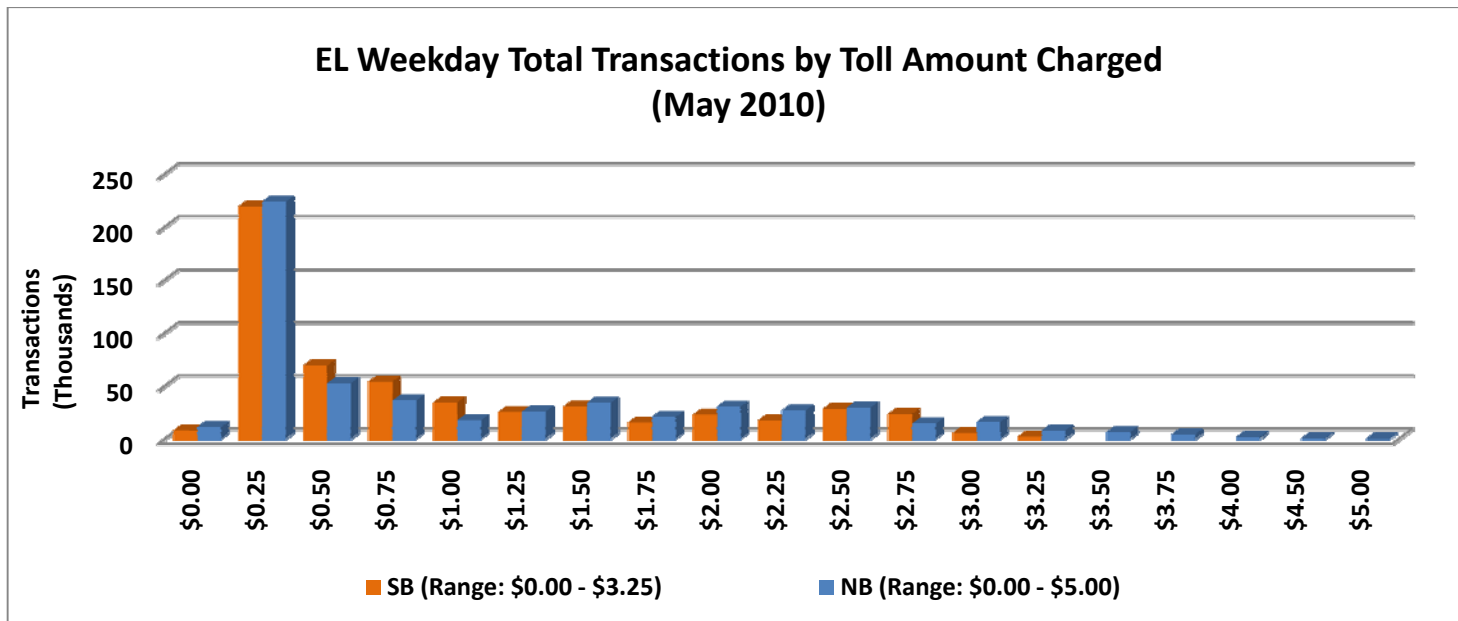


NOTE: ITD = Inception to Date



## Revenue/Tolls Statistics

\*\* Peak Period is defined as 6-9 AM (southbound) and 4-7 PM (northbound).

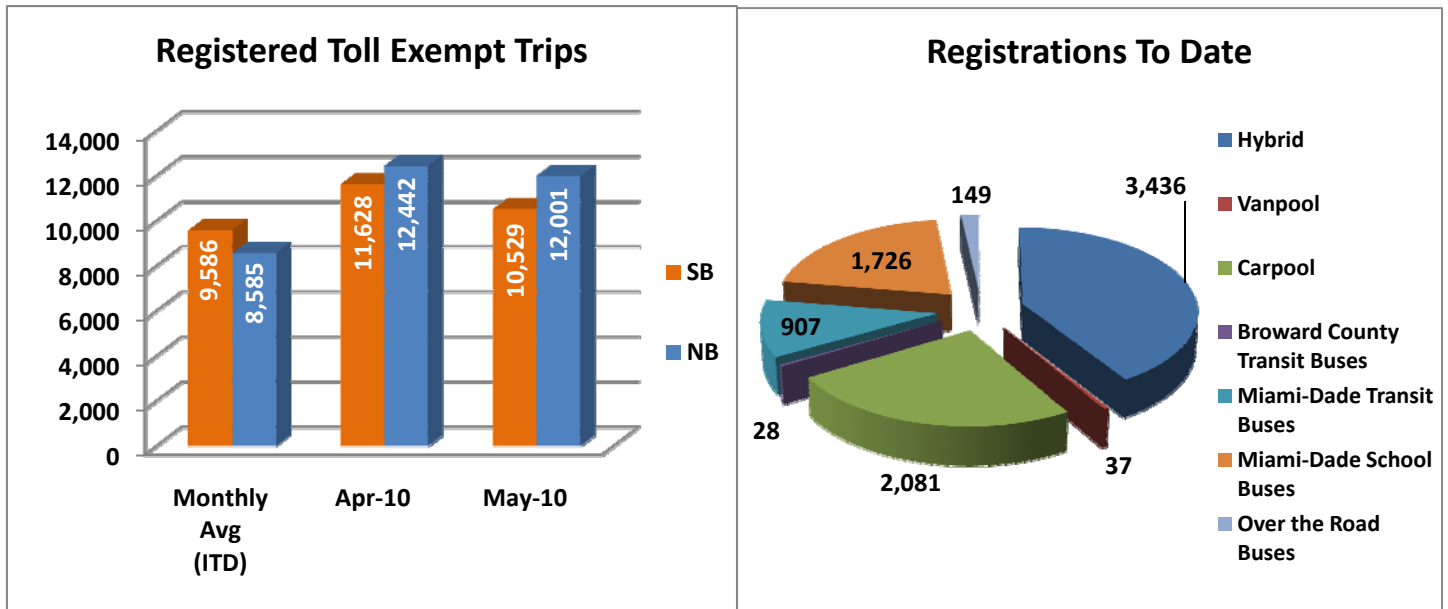


NOTE: ITD = Inception to Date



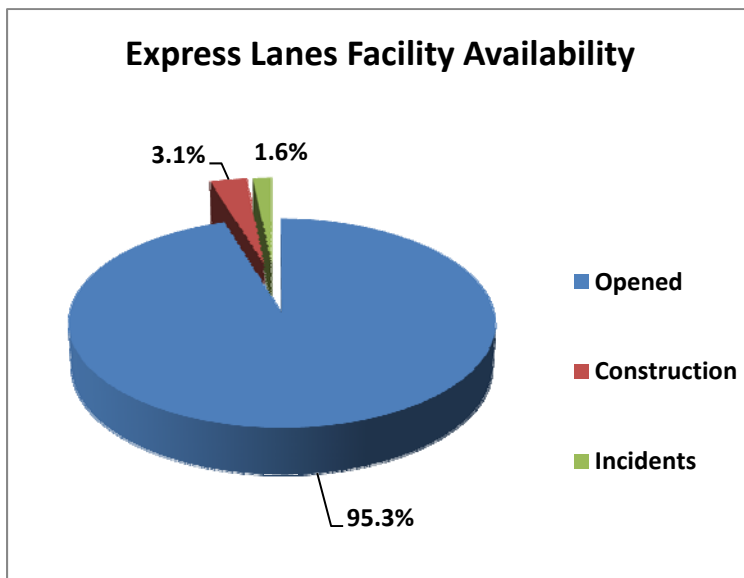
## Registrations—Toll Exempt Trips

The total registrations through May 2010 was 8,364. There were 22,530 total registered toll exempt vehicle trips for the month of May.



NOTE: ITD = Inception to Date

## Facility Availability



The entire 95 Express Lanes (both directions) were open to motorists 95.3% of the time, while closed 3.1% due to planned construction and 1.6% due to non-recurring events.