



Summary of Monthly Operations – June 2010

General

On January 15, 2010 the 95 Express Lanes began its southbound operations. This monthly report has been modified to reflect both directions of traffic with all corresponding performance measures. In total, the 95 Express Lanes:

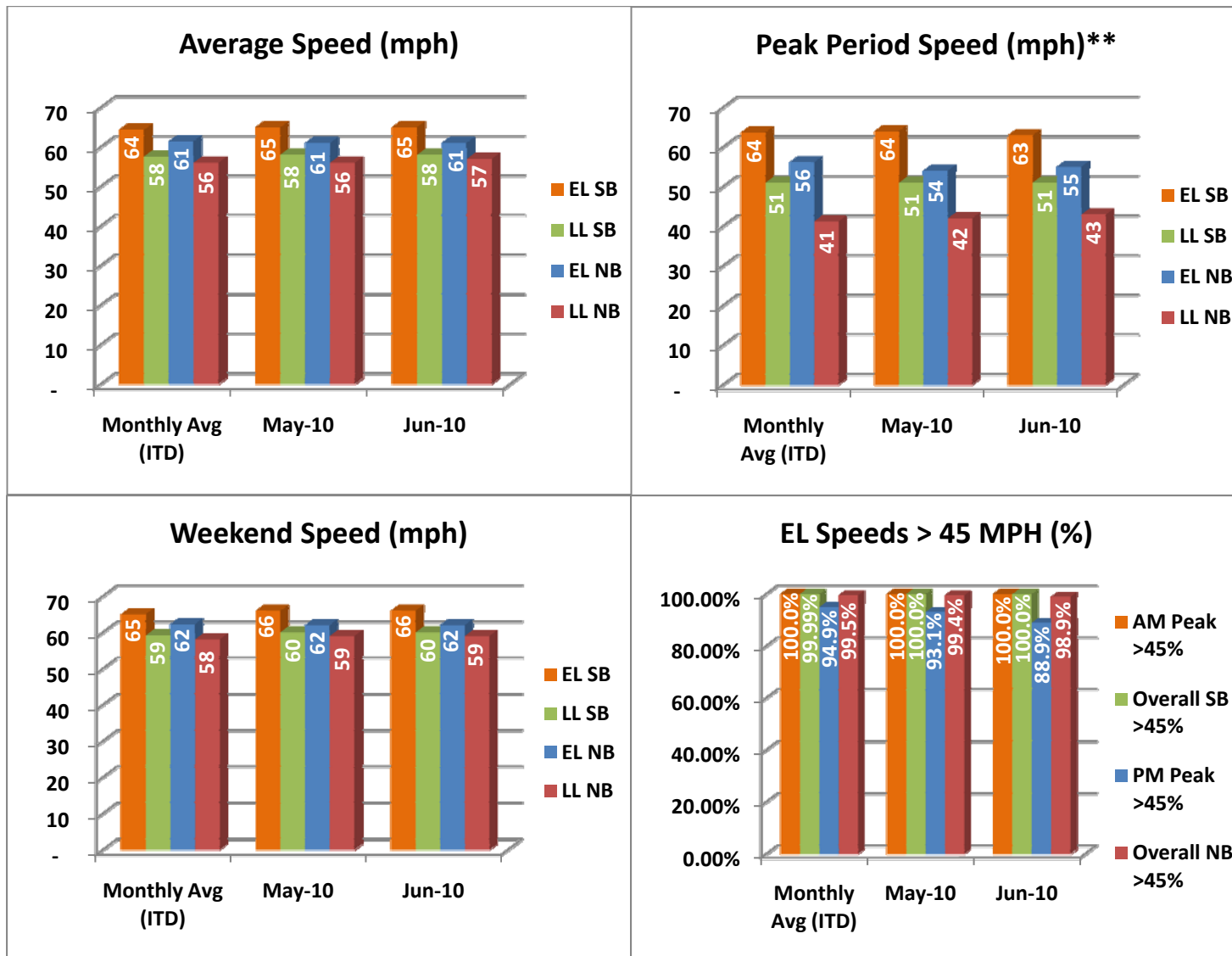
- ✓ Serviced 1,407,224 vehicle trips in June (8.18 million in 2010 to date), bringing the total since opening (December 5, 2008) to approximately 16.1 million trips.
- ✓ Had estimated monthly toll revenue of \$1.11 million in June (\$6.59 million in 2010 to date) bringing the total revenue to date to approximately \$11.8 million.
- ✓ Increased to a total of 8,475 registered vehicles.

<u>June 2010 Statistics</u>	<u>Southbound</u>		<u>Northbound</u>			
Trips	694,041		713,183			
Revenue	\$515,728		\$590,351			
Tolls	\$0.00 - \$3.75		\$0.00 - \$5.50			
- Range	\$0.91		\$1.02			
- Avg. Weekday	\$1.64		\$2.23			
- Avg. Peak Period**	\$0.25		\$0.25			
- Avg. Weekend	\$0.55		\$0.52			
- Avg. Off Peak	\$2.00		\$2.00			
- 85 th Percentile Weekday						
Volume (veh)	EL	LL	EL	LL		
- Avg. Weekday	26,268	111,478	26,960	97,063		
- Avg. Peak Period**	7,398	19,688	7,714	17,926		
Speed (mph)	EL	LL	Δ	EL	LL	Δ
- Avg. Overall	65	58	7	61	57	4
- Avg. Peak Period**	63	51	12	55	43	12
Operated Above 45 MPH	100.0%		98.9%			
Remained Open to Motorists	94.3%		96.0%			
Closed due to Planned Construction	4.0%		2.7%			
Closed due to Non-recurring Events	1.7%		1.3%			
<i>EL (Express Lanes); LL (Local Lanes)</i>						
<i>**Peak Period is defined as 6-9 AM (southbound) and 4-7 PM (northbound).</i>						



Operations/Traffic Statistics - Speed Data

** Peak Period is defined as 6-9 AM (southbound) and 4-7 PM (northbound).

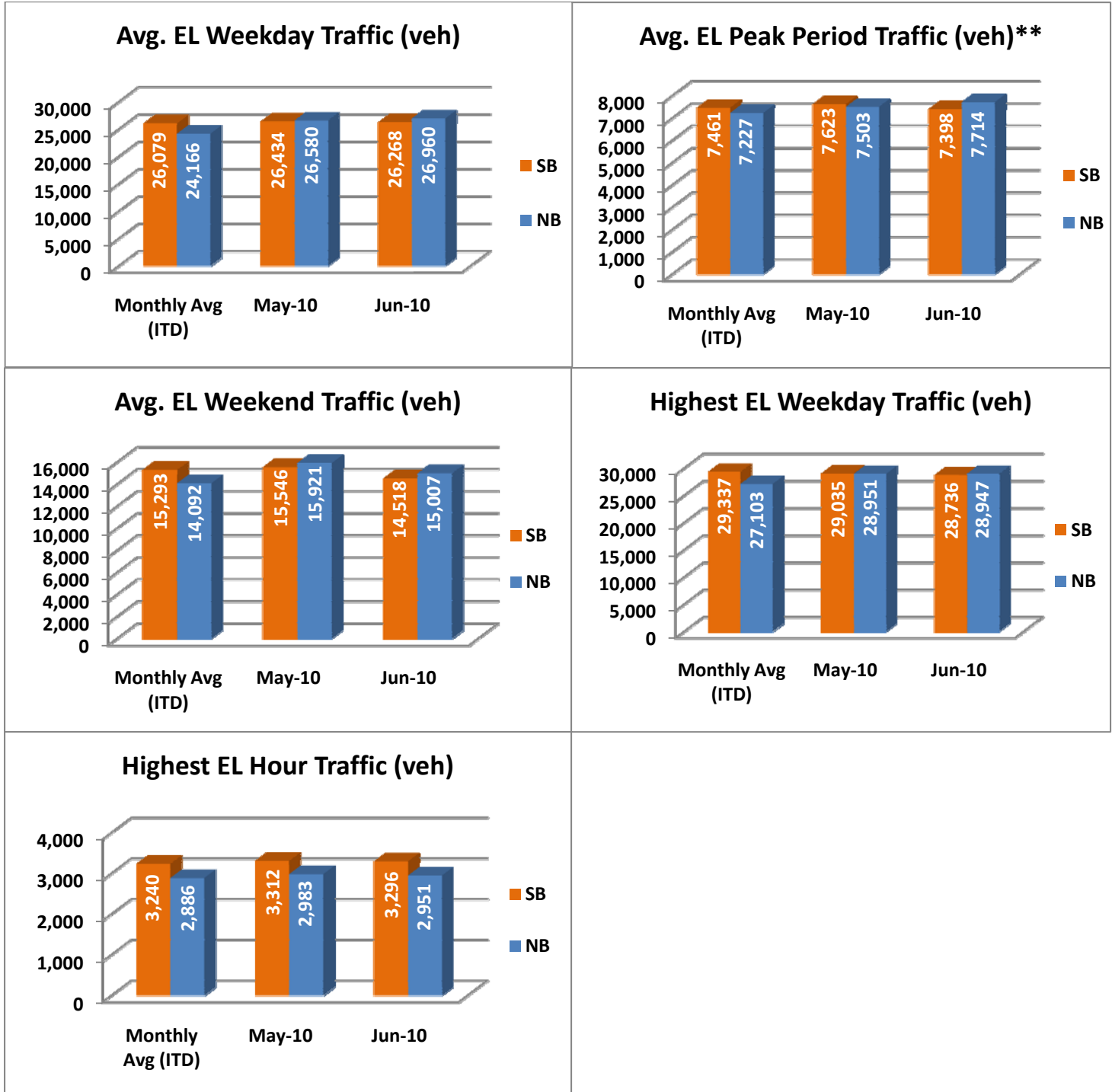


NOTE: ITD = Inception to Date



Operations/Traffic Statistics - Volume Data

** Peak Period is defined as 6-9 AM (southbound) and 4-7 PM (northbound).

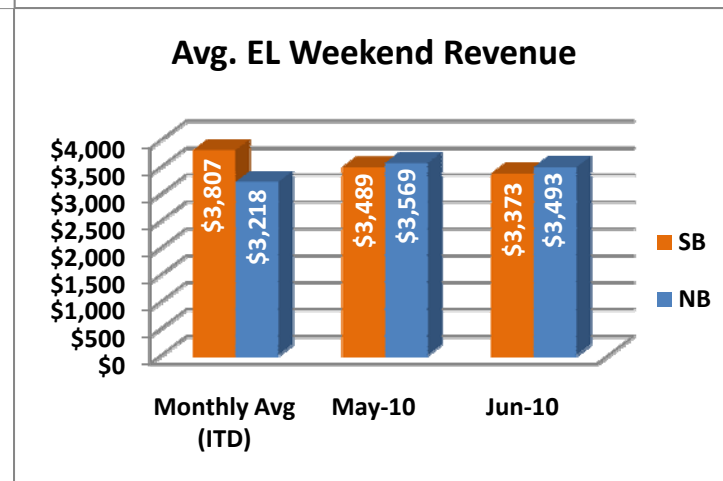
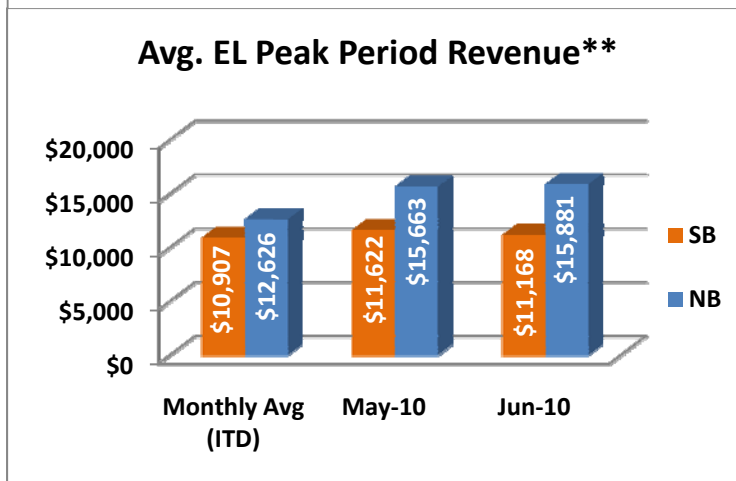
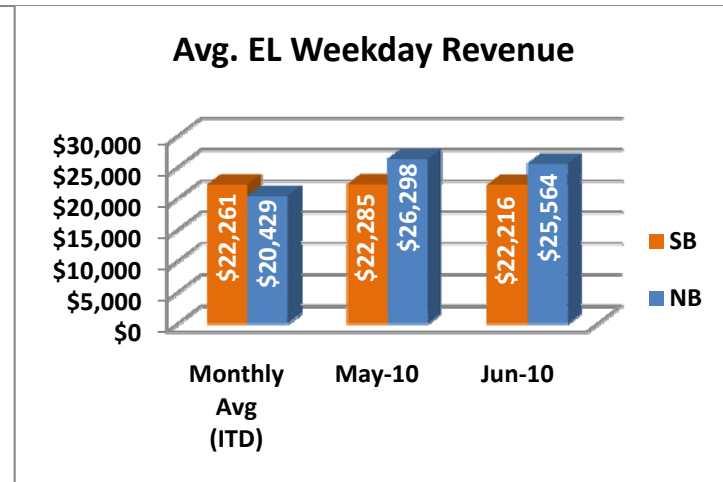
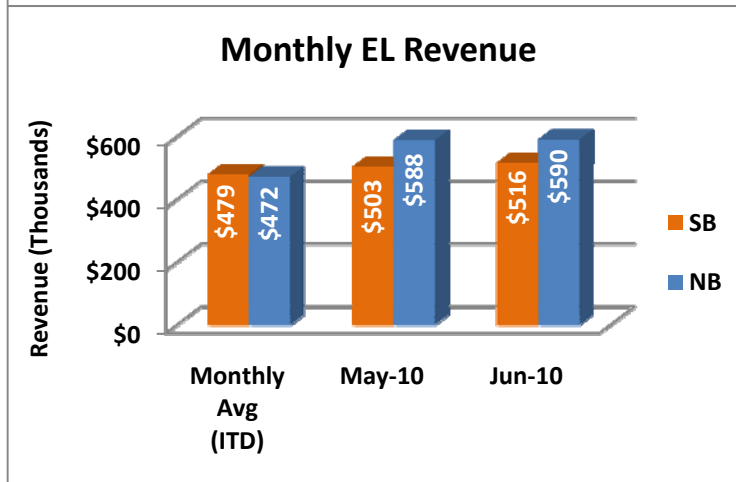
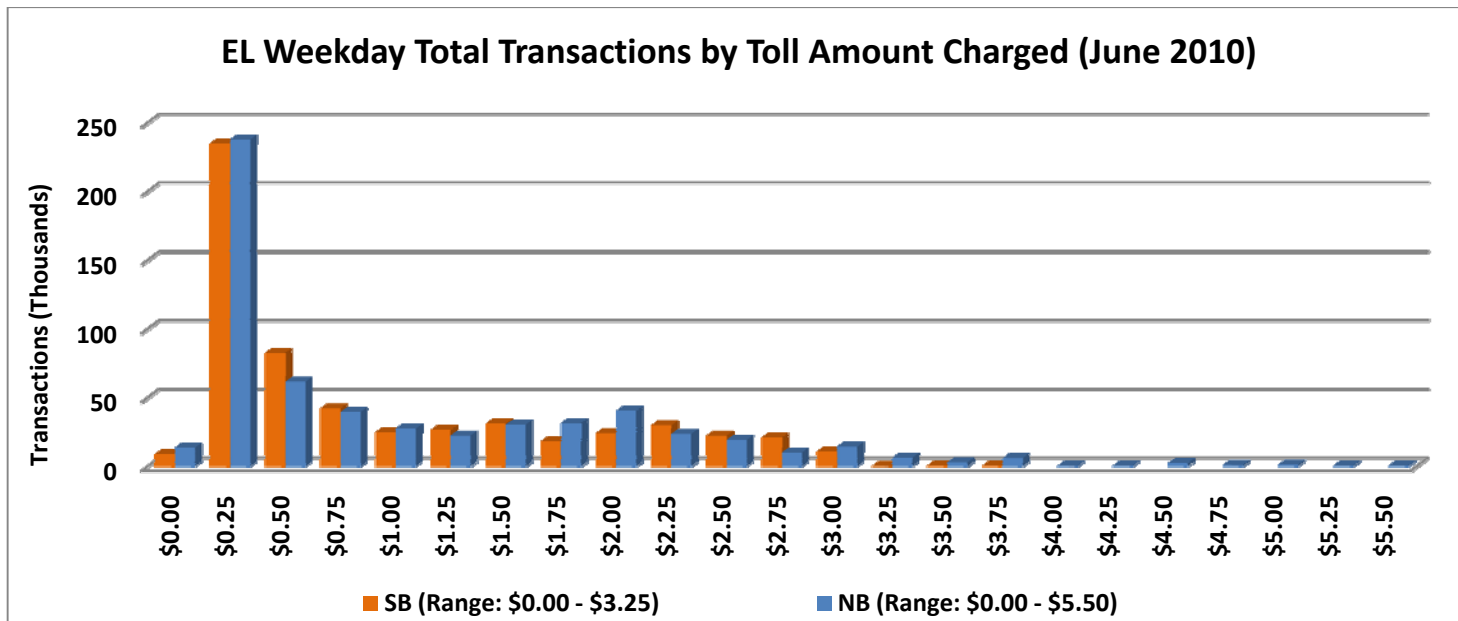


NOTE: ITD = Inception to Date



Revenue/Tolls Statistics

** Peak Period is defined as 6-9 AM (southbound) and 4-7 PM (northbound).

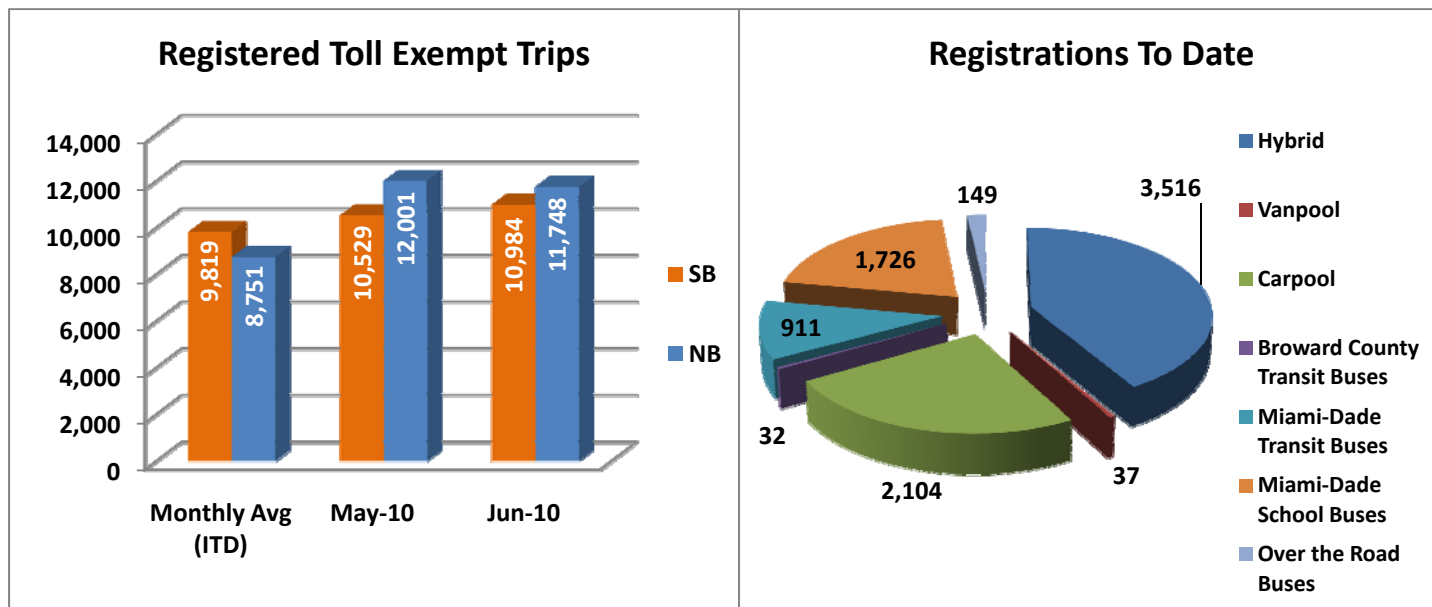


NOTE: ITD = Inception to Date



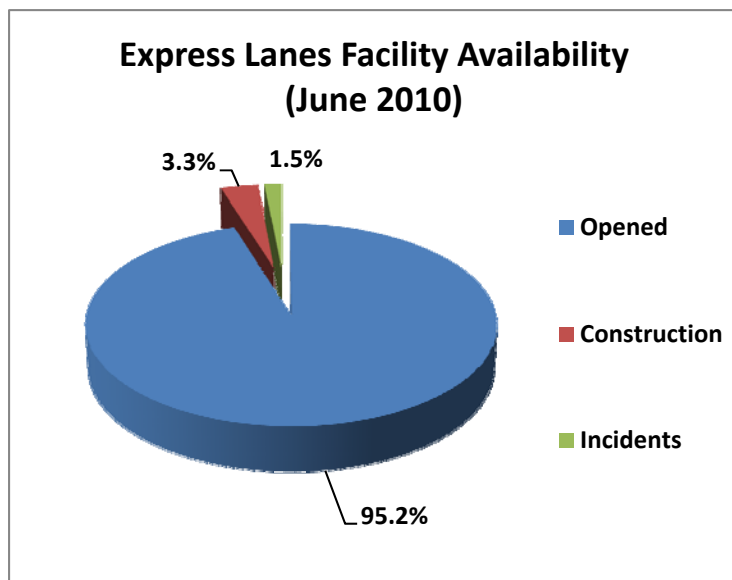
Registrations—Toll Exempt Trips

The total registrations through June 2010 increased to 8,475. There were 22,732 total registered toll exempt vehicle trips for the month of June.



NOTE: ITD = Inception to Date

Facility Availability



The entire 95 Express Lanes (both directions) were open to motorists 95.2% of the time, while closed 3.3% due to planned construction and 1.5% due to non-recurring events.