



Summary of Monthly Operations – July 2010

General

On January 15, 2010 the 95 Express Lanes began its southbound operations. This monthly report has been modified to reflect both directions of traffic with all corresponding performance measures. In total, the 95 Express Lanes:

- ✓ Serviced 1,413,904 vehicle trips in July (9.60 million in 2010 to date), bringing the total since opening (December 5, 2008) to approximately 17.5 million trips.
- ✓ Had estimated monthly toll revenue of \$1.04 million in July (\$7.63 million in 2010 to date) bringing the total revenue to date to approximately \$12.9 million.
- ✓ Decreased to a total of 8,308 registered vehicles.

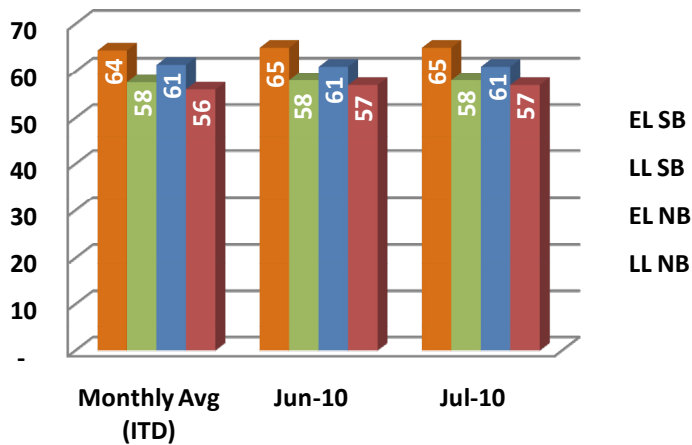
<u>July 2010 Statistics</u>	<u>Southbound</u>		<u>Northbound</u>			
Trips	700,983		712,921			
Revenue	\$505,010		\$537,332			
Tolls	\$0.00 - \$3.75		\$0.00 - \$5.75			
- Range	\$0.89		\$0.93			
- Avg. Weekday	\$1.58		\$2.03			
- Avg. Peak Period**	\$0.25		\$0.24			
- Avg. Weekend	\$0.53		\$0.46			
- Avg. Off Peak	\$2.00		\$1.75			
- 85 th Percentile Weekday						
Volume (veh)	EL	LL	EL	LL		
- Avg. Weekday	25,790	105,003	26,062	96,117		
- Avg. Peak Period**	7,291	18,125	7,667	18,028		
Speed (mph)	EL	LL	Δ	EL	LL	Δ
- Avg. Overall	65	58	7	61	57	4
- Avg. Peak Period**	63	51	12	55	43	12
Operated Above 45 MPH	100.0%		98.9%			
Remained Open to Motorists	94.9%		94.9%			
Closed due to Planned Construction	4.3%		3.9%			
Closed due to Non-recurring Events	0.8%		1.2%			
<i>EL (Express Lanes); LL (Local Lanes)</i>						
<i>**Peak Period is defined as 6-9 AM (southbound) and 4-7 PM (northbound).</i>						



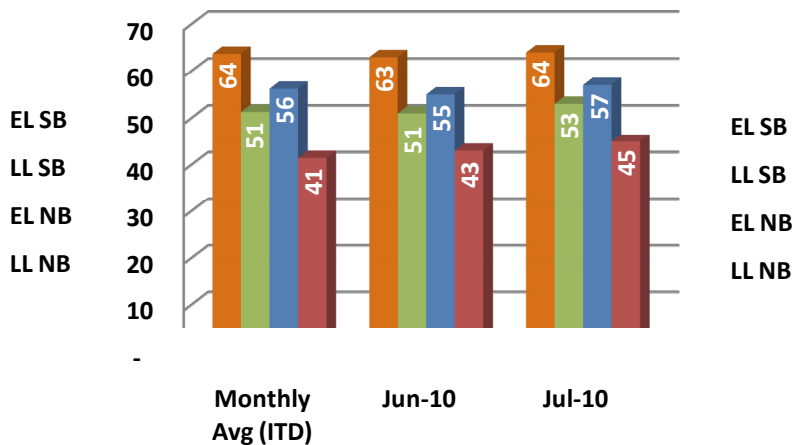
Operations/Traffic Statistics - Speed Data

** Peak Period is defined as 6-9 AM (southbound) and 4-7 PM (northbound).

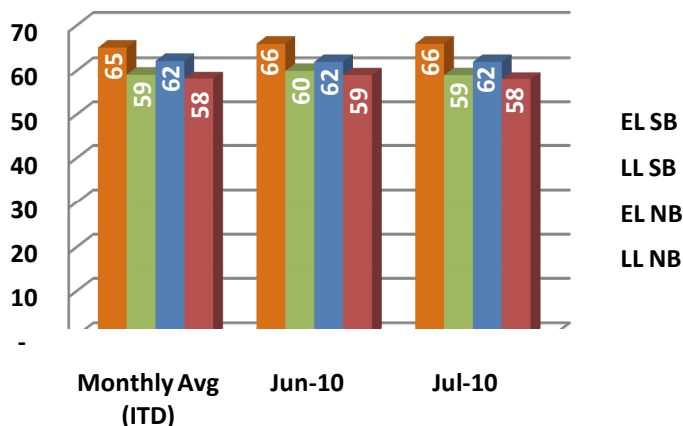
Average Speed (mph)



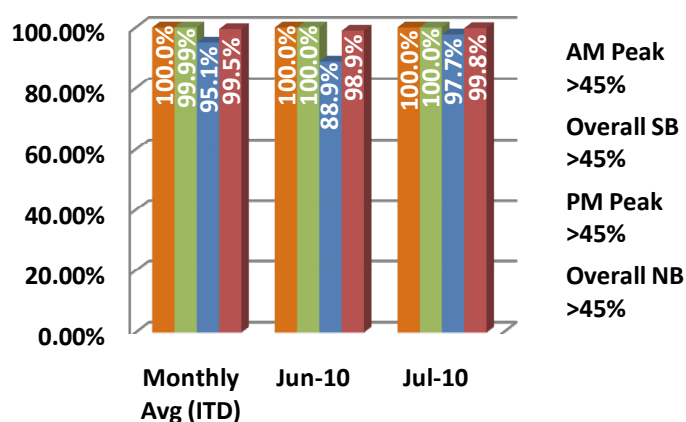
Peak Period Speed (mph)**



Weekend Speed (mph)



EL Speeds > 45 MPH (%)



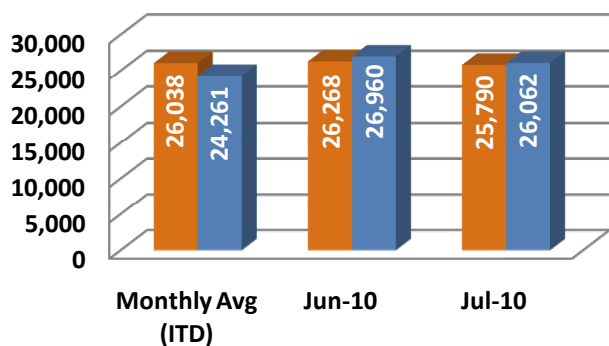
NOTE: ITD = Inception to Date



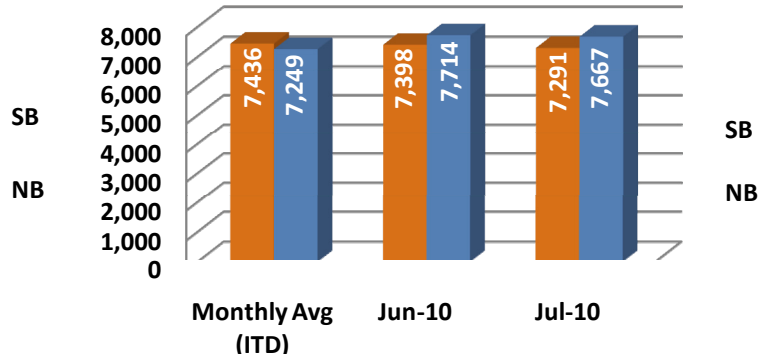
Operations/Traffic Statistics - Volume Data

** Peak Period is defined as 6-9 AM (southbound) and 4-7 PM (northbound).

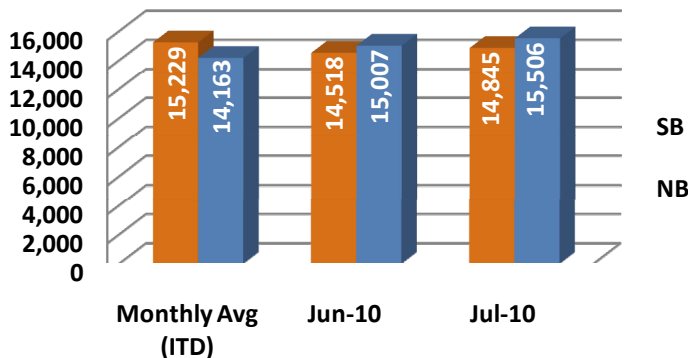
Avg. EL Weekday Traffic (veh)



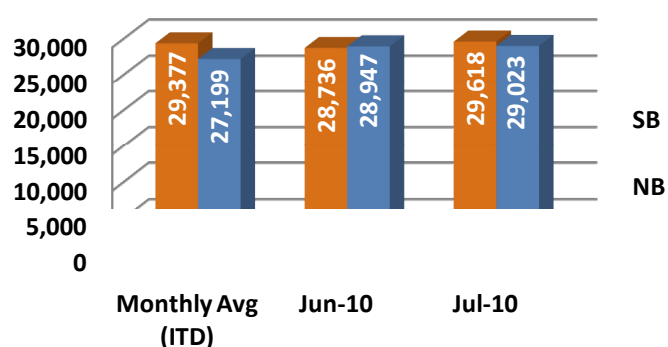
Avg. EL Peak Period Traffic (veh)**



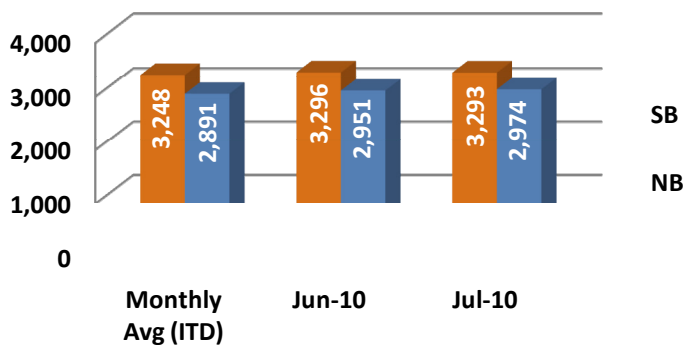
Avg. EL Weekend Traffic (veh)



Highest EL Weekday Traffic (veh)



Highest EL Hour Traffic (veh)



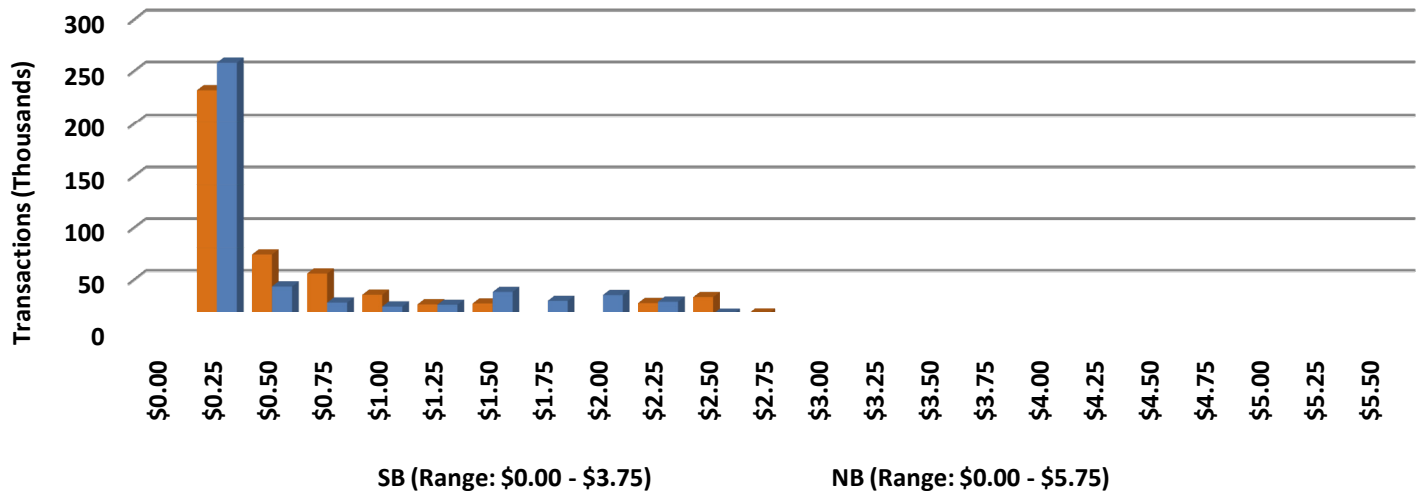
NOTE: ITD = Inception to Date



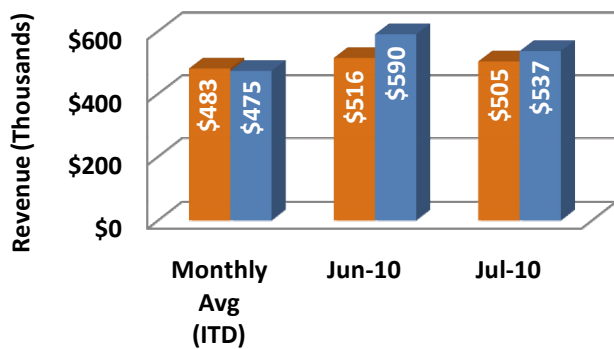
Revenue/Tolls Statistics

** Peak Period is defined as 6-9 AM (southbound) and 4-7 PM (northbound).

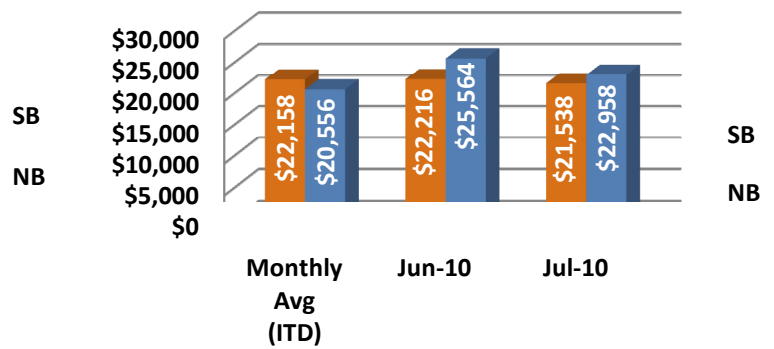
EL Weekday Total Transactions by Toll Amount Charged (July 2010)



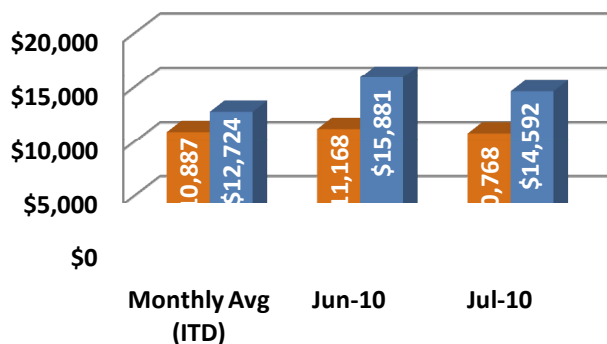
Monthly EL Revenue



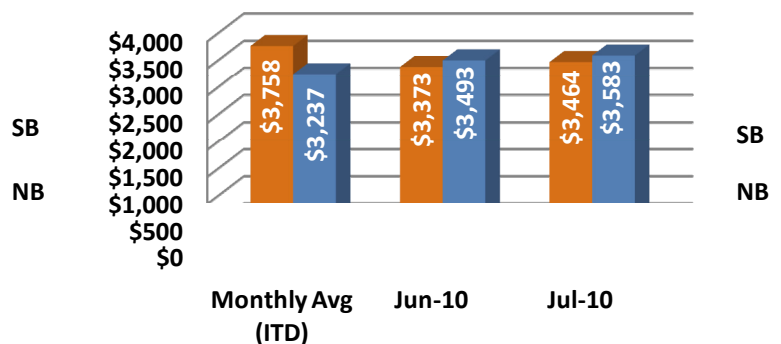
Avg. EL Weekday Revenue



Avg. EL Peak Period Revenue**



Avg. EL Weekend Revenue

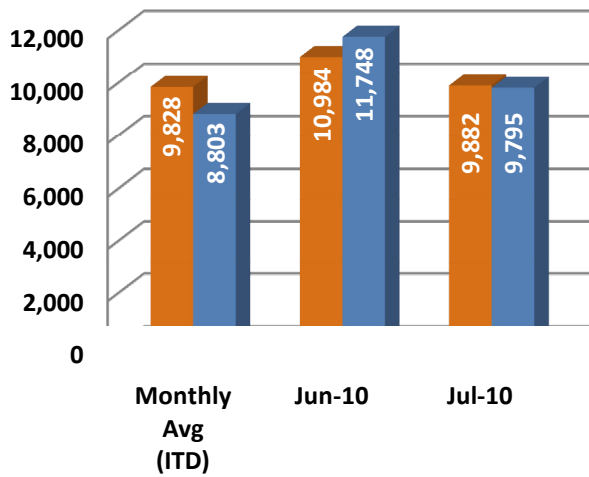


NOTE: ITD = Inception to Date

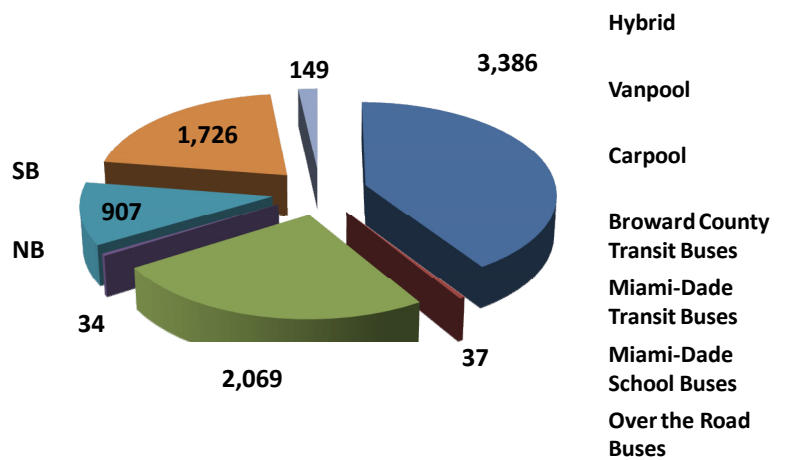
Registrations—Toll Exempt Trips

The total registrations through July 2010 decreased to 8,308. There were 19,677 total registered toll exempt vehicle trips for the month of July.

Registered Toll Exempt Trips



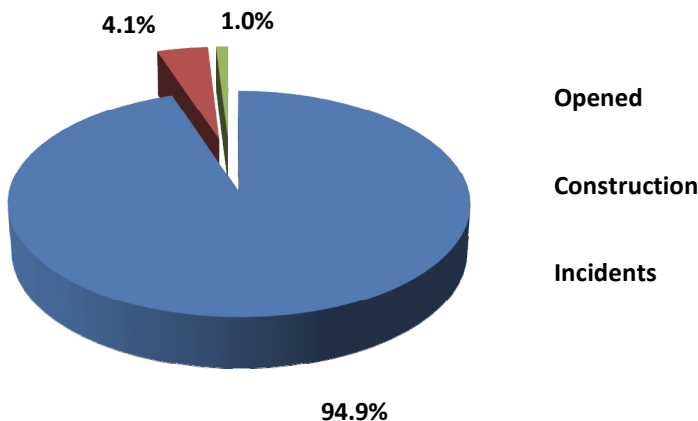
Registrations To Date



NOTE: ITD = Inception to Date

Facility Availability

Express Lanes Facility Availability



The entire 95 Express Lanes (both directions) were open to motorists 94.9% of the time, while closed 4.1% due to planned construction and 1.0% due to non-recurring events.