



Summary of Monthly Operations – August 2010

General

On January 15, 2010 the 95 Express Lanes began its southbound operations. This monthly report has been modified to reflect both directions of traffic with all corresponding performance measures. In total, the 95 Express Lanes:

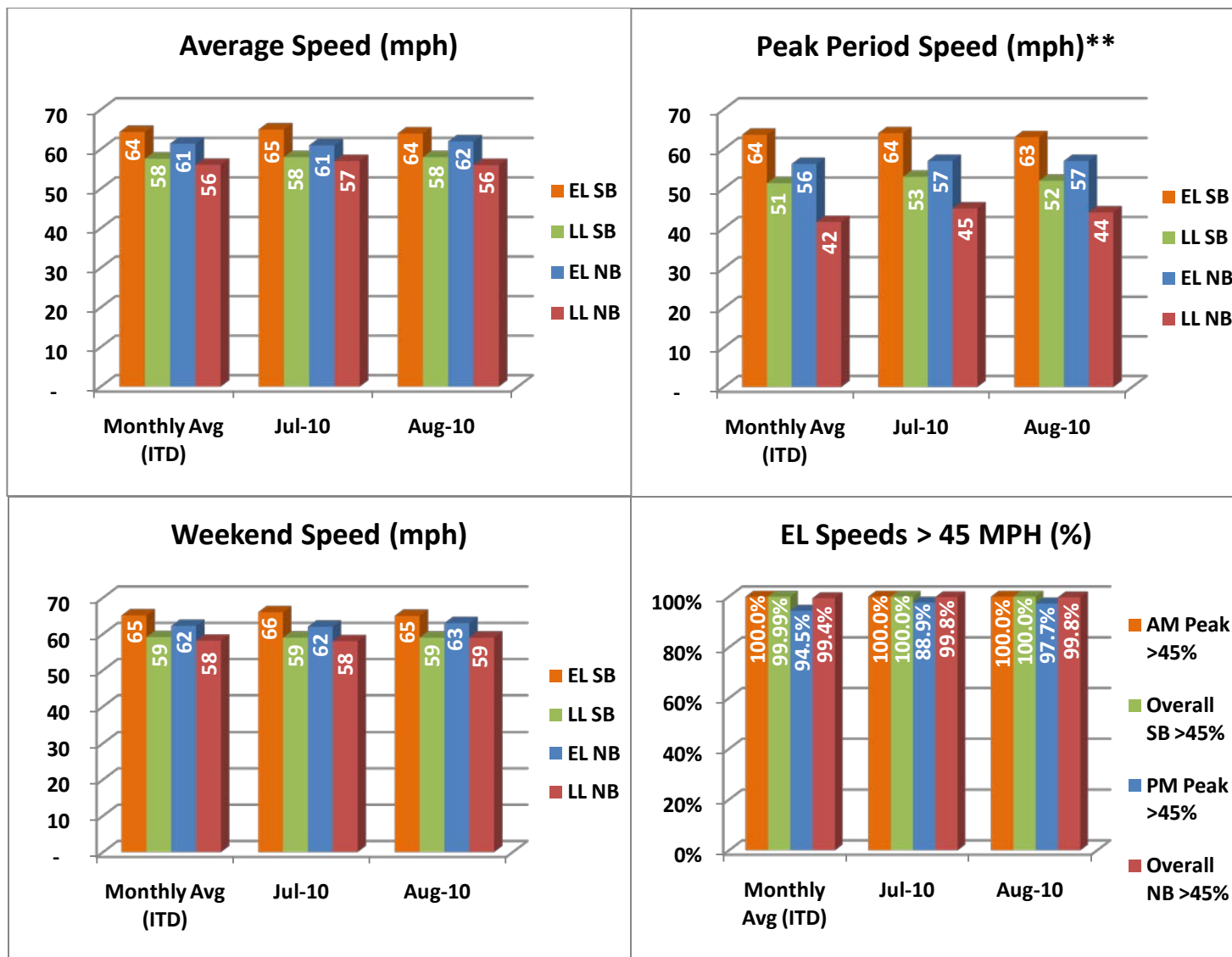
- ✓ Serviced 1,446,654 vehicle trips in August (11.04 million in 2010 to date), bringing the total since opening (December 5, 2008) to approximately 18.9 million trips.
- ✓ Had estimated monthly toll revenue of \$1.06 million in August (\$8.68 million in 2010 to date) bringing the total revenue to date to approximately \$13.9 million.
- ✓ Increased to a total of 8,377 registered vehicles.

| <u>August 2010 Statistics</u> | <u>Southbound</u> | | <u>Northbound</u> | | | |
|---|-------------------|-----------|-------------------|-----------|-----------|----------|
| Trips | 708,944 | | 737,710 | | | |
| Revenue | \$541,515 | | \$515,671 | | | |
| Tolls | \$0.00 - \$3.75 | | \$0.00 - \$4.75 | | | |
| - Range | \$0.95 | | \$0.88 | | | |
| - Avg. Weekday | \$1.69 | | \$1.87 | | | |
| - Avg. Peak Period** | \$0.24 | | \$0.25 | | | |
| - Avg. Weekend | \$0.56 | | \$0.43 | | | |
| - Avg. Off Peak | \$2.00 | | \$1.50 | | | |
| - 85 th Percentile Weekday | | | | | | |
| Volume (veh) | EL | LL | EL | LL | | |
| - Avg. Weekday | 26,196 | 110,756 | 27,289 | 94,815 | | |
| - Avg. Peak Period** | 7,506 | 19,962 | 8,277 | 17,983 | | |
| Speed (mph) | EL | LL | Δ | EL | LL | Δ |
| - Avg. Overall | 64 | 58 | 6 | 62 | 56 | 6 |
| - Avg. Peak Period** | 63 | 52 | 11 | 57 | 44 | 13 |
| Operated Above 45 MPH | 100.0% | | 99.8% | | | |
| Remained Open to Motorists | 95.1% | | 94.8% | | | |
| Closed due to Planned Construction | 4.3% | | 4.2% | | | |
| Closed due to Non-recurring Events | 0.6% | | 1.0% | | | |
| <i>EL (Express Lanes); LL (Local Lanes)</i> | | | | | | |
| <i>**Peak Period is defined as 6-9 AM (southbound) and 4-7 PM (northbound).</i> | | | | | | |



Operations/Traffic Statistics - Speed Data

** Peak Period is defined as 6-9 AM (southbound) and 4-7 PM (northbound).

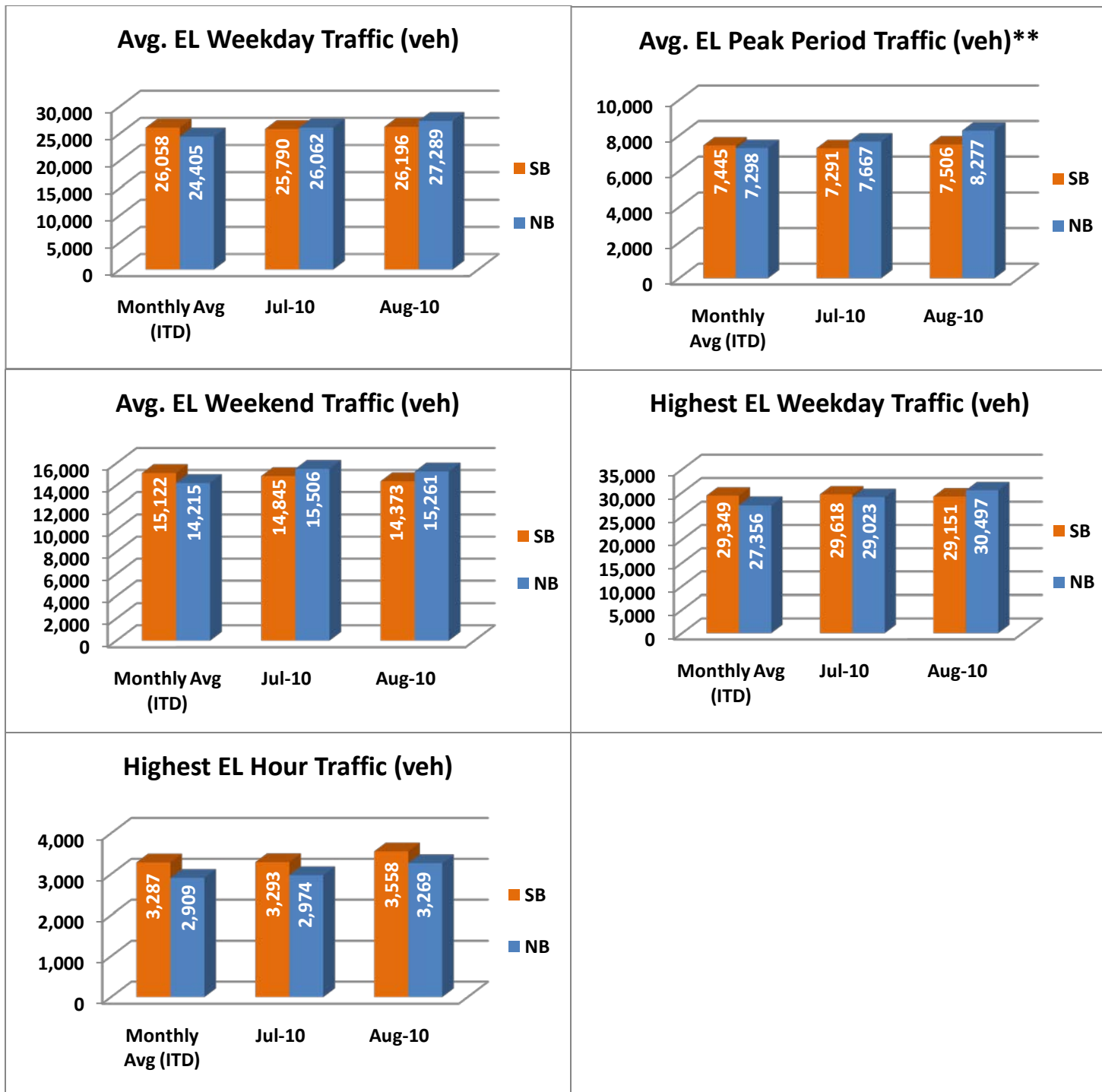


NOTE: ITD = Inception to Date



Operations/Traffic Statistics - Volume Data

** Peak Period is defined as 6-9 AM (southbound) and 4-7 PM (northbound).

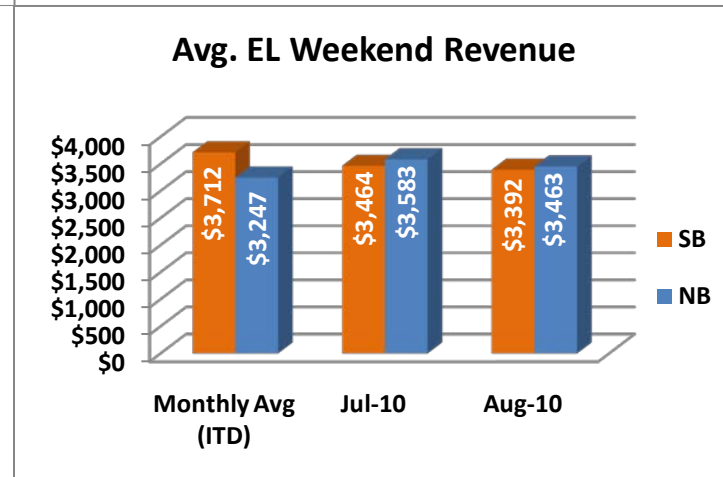
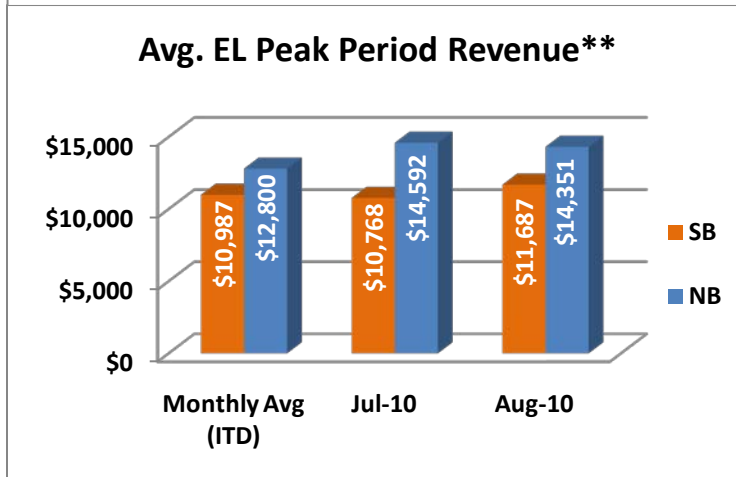
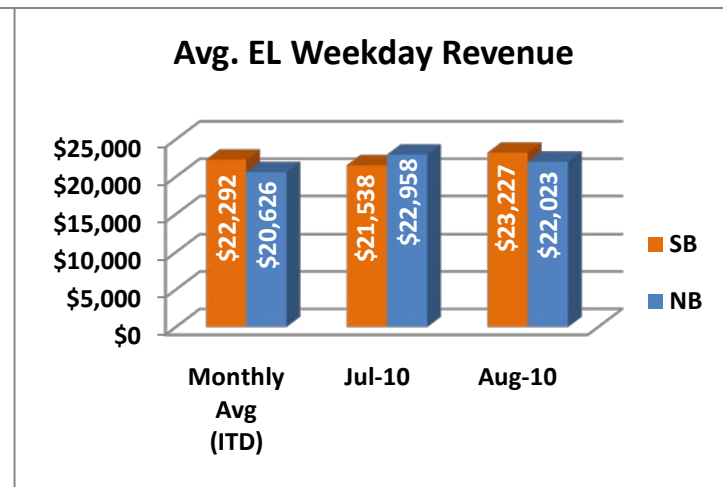
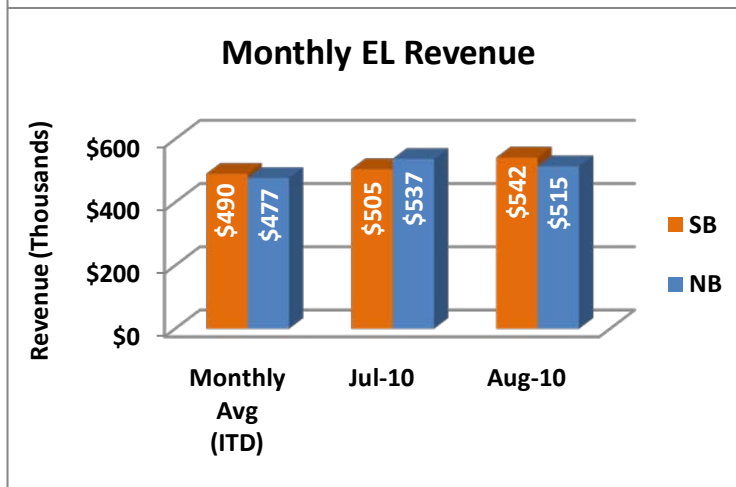
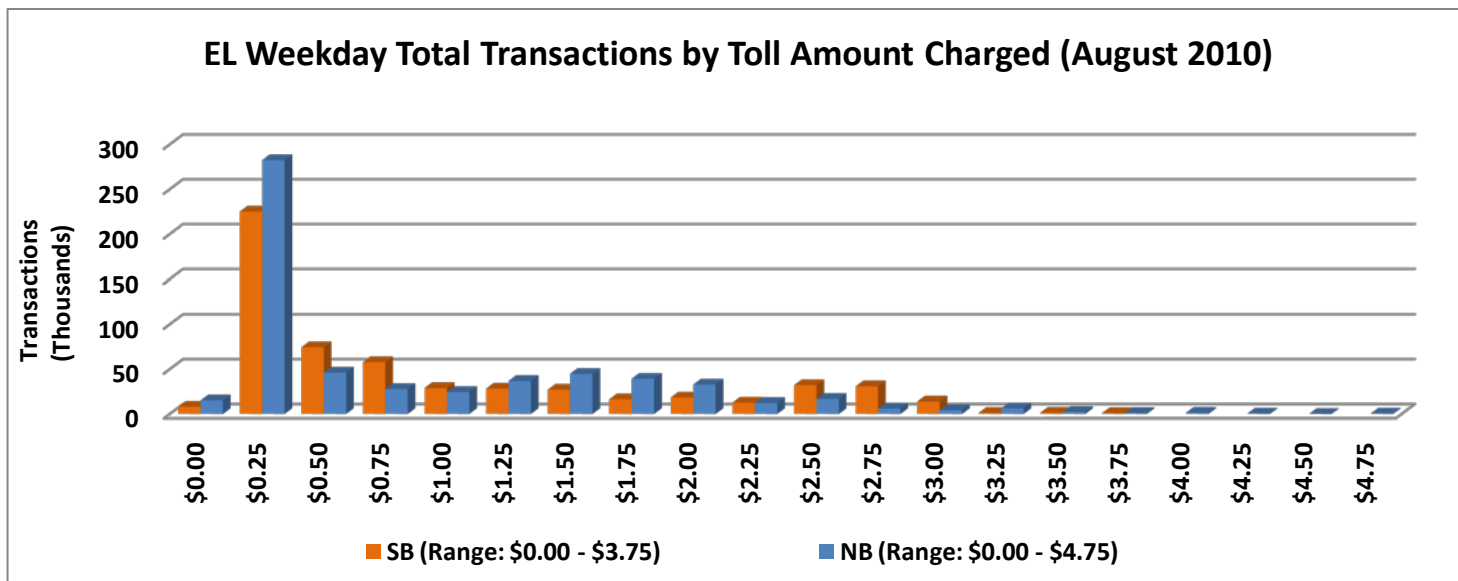


NOTE: ITD = Inception to Date



Revenue/Tolls Statistics

** Peak Period is defined as 6-9 AM (southbound) and 4-7 PM (northbound).

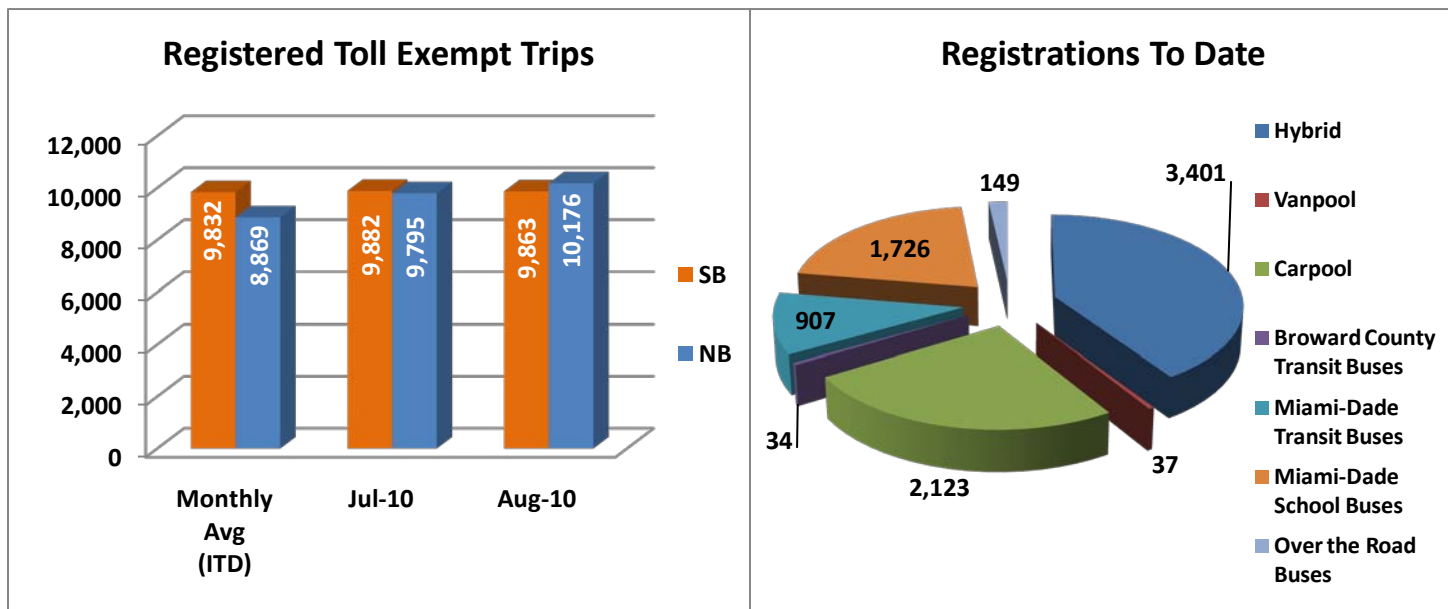


NOTE: ITD = Inception to Date



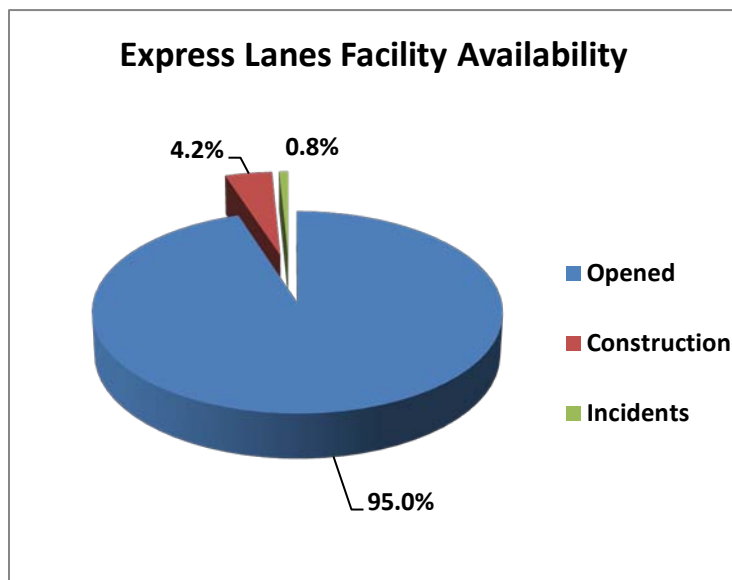
Registrations—Toll Exempt Trips

The total registrations through August 2010 increased to 8,377. There were 20,039 total registered toll exempt vehicle trips for the month of August.



NOTE: ITD = Inception to Date

Facility Availability



The entire 95 Express Lanes (both directions) were open to motorists 95.0% of the time, while closed 4.2% due to planned construction and 0.8% due to non-recurring events.