



Summary of Monthly Operations – October 2010

General

On January 15, 2010 the 95 Express Lanes began its southbound operations. This monthly report has been modified to reflect both directions of traffic with all corresponding performance measures. In total, the 95 Express Lanes:

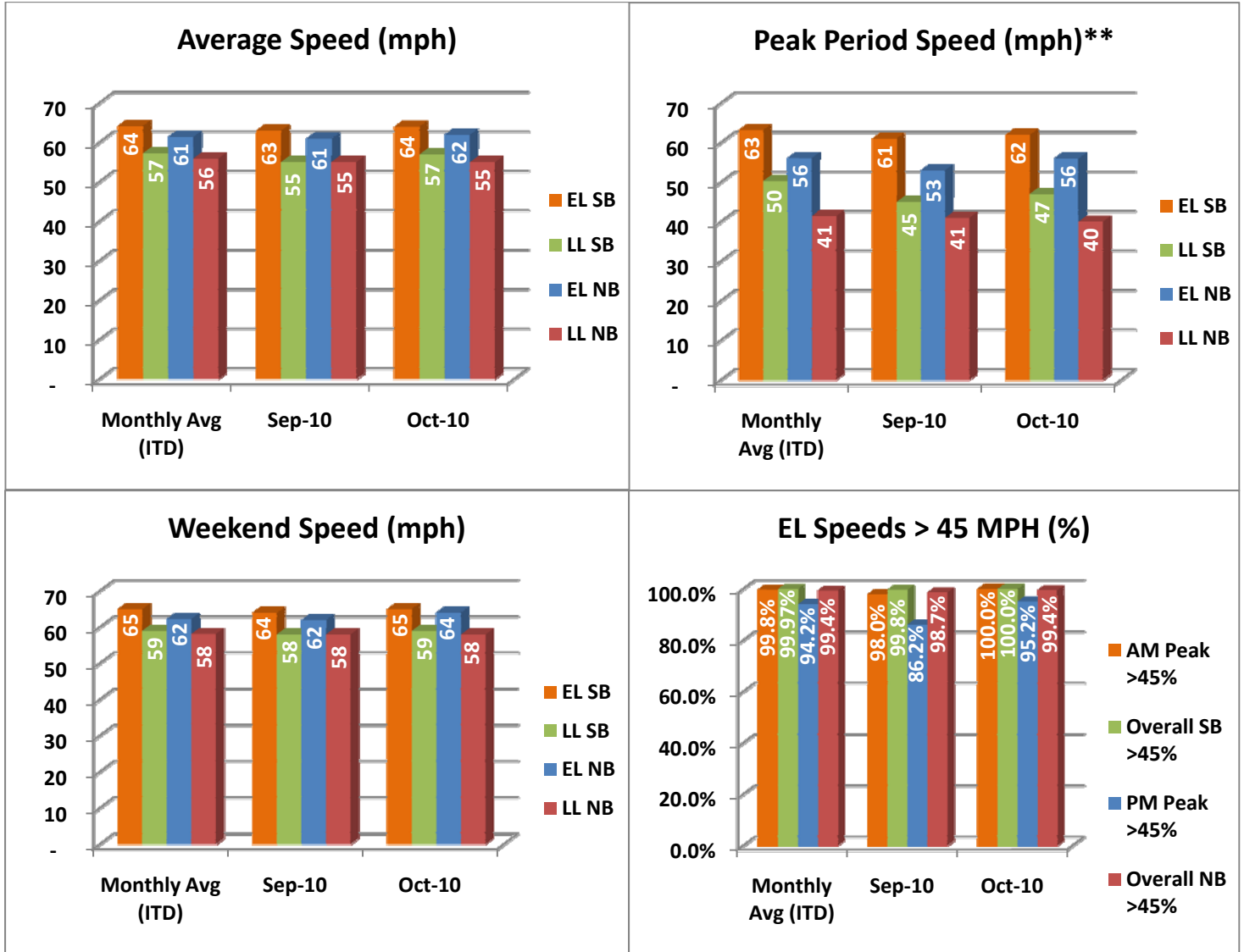
- ✓ Serviced 1,568,850 vehicle trips in October (14.05 million in 2010 to date), bringing the total since opening (December 5, 2008) to approximately 22 million trips.
- ✓ Had estimated monthly toll revenue of \$1.19 million in October (\$11.07 million in 2010 to date) bringing the total revenue to date to approximately \$16.3 million.
- ✓ Increased to a total of 8,451 registered vehicles.

<u>October 2010 Statistics</u>	<u>Southbound</u>		<u>Northbound</u>			
Trips	768,875		781,975			
Revenue	\$556,772		\$637,142			
Tolls	\$0.00 - \$4.50		\$0.00 - \$7.10			
- Range	\$0.98		\$1.09			
- Avg. Weekday	\$1.69		\$2.34			
- Avg. Peak Period**	\$0.25		\$0.26			
- Avg. Weekend	\$0.57		\$0.56			
- Avg. Off Peak	\$2.00		\$2.25			
- 85 th Percentile Weekday						
Volume (veh)	EL	LL	EL	LL		
- Avg. Weekday	28,851	111,944	29,160	99,147		
- Avg. Peak Period**	8,525	19,775	8,433	18,094		
Speed (mph)	EL	LL	Δ	EL	LL	Δ
- Avg. Overall	64	57	7	62	55	7
- Avg. Peak Period**	62	47	15	56	40	16
Operated Above 45 MPH	100.0%		99.5%			
Remained Open to Motorists	96.9%		95.9%			
Closed due to Planned Construction	2.6%		3.4%			
Closed due to Non-recurring Events	0.5%		0.7%			
<i>EL (Express Lanes); LL (Local Lanes)</i>						
<i>**Peak Period is defined as 6-9 AM (southbound) and 4-7 PM (northbound).</i>						



Operations/Traffic Statistics - Speed Data

** Peak Period is defined as 6-9 AM (southbound) and 4-7 PM (northbound).

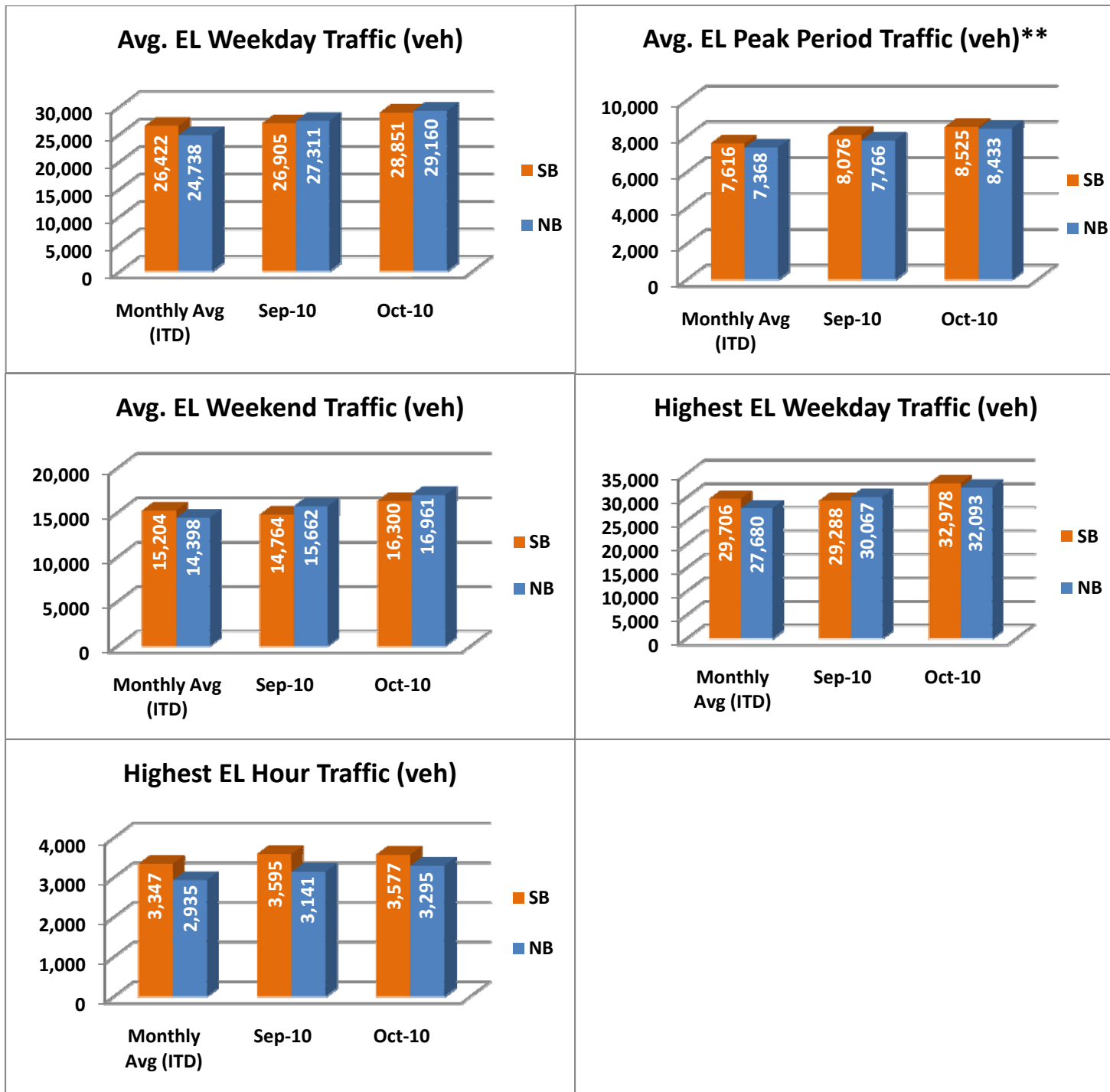


NOTE: ITD = Inception to Date



Operations/Traffic Statistics - Volume Data

** Peak Period is defined as 6-9 AM (southbound) and 4-7 PM (northbound).

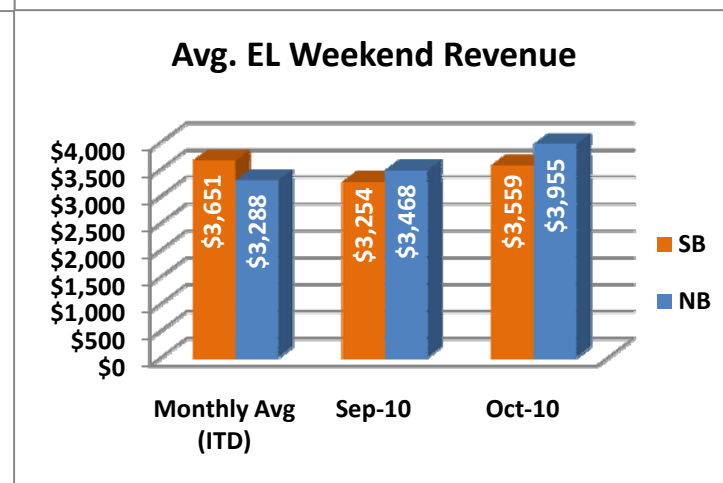
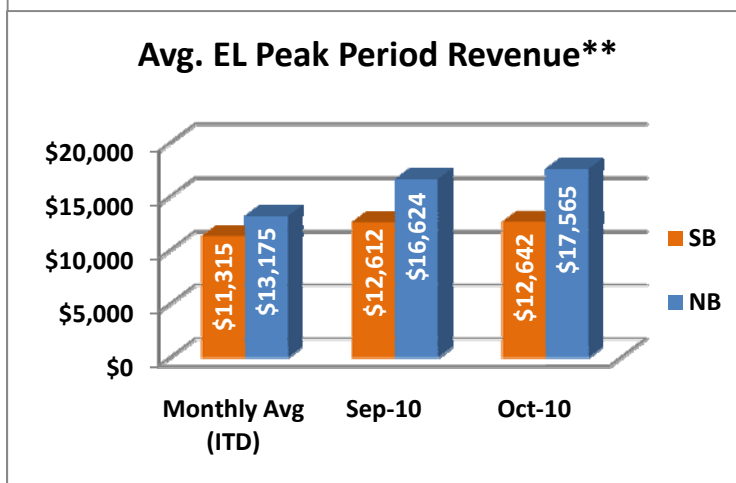
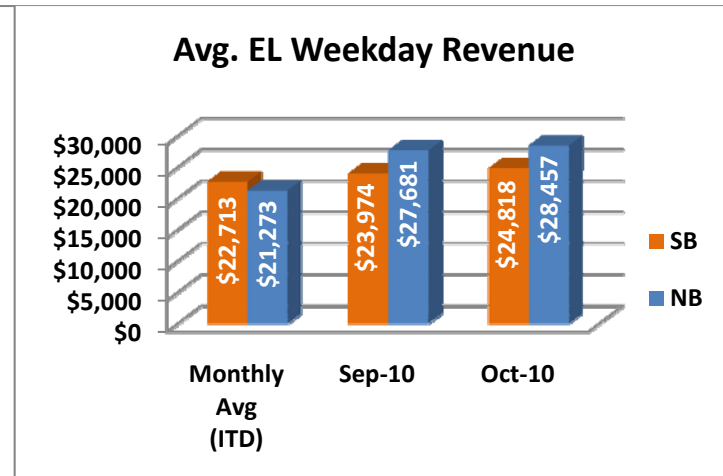
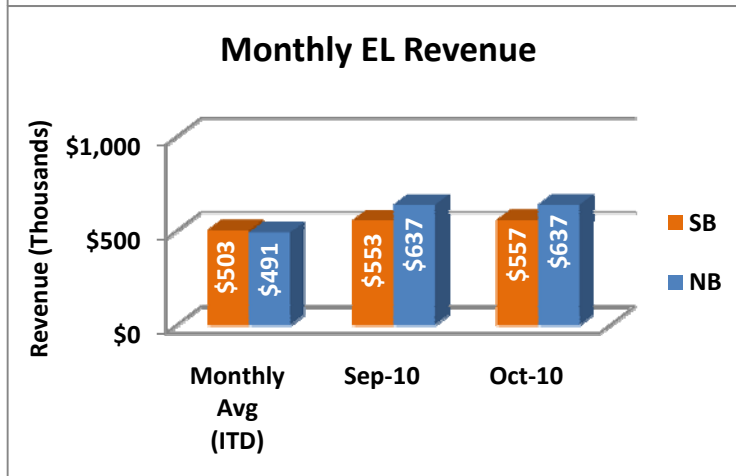
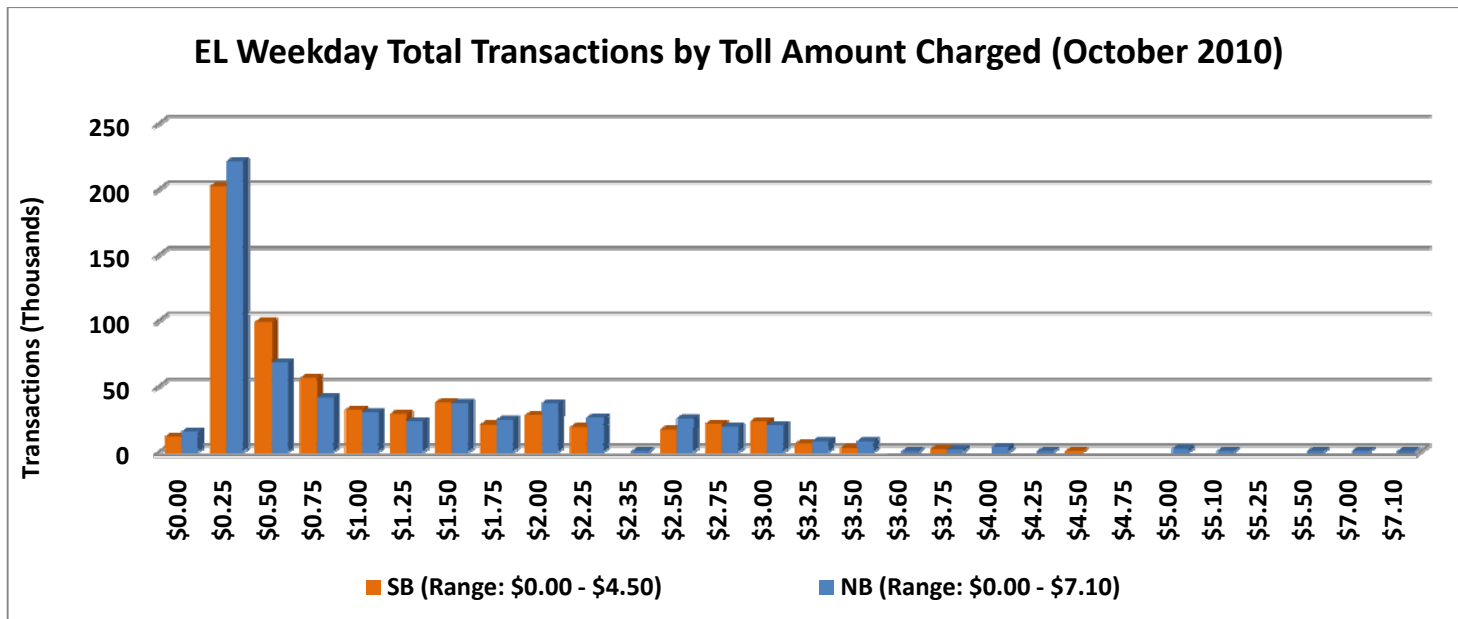


NOTE: ITD = Inception to Date



Revenue/Tolls Statistics

** Peak Period is defined as 6-9 AM (southbound) and 4-7 PM (northbound).

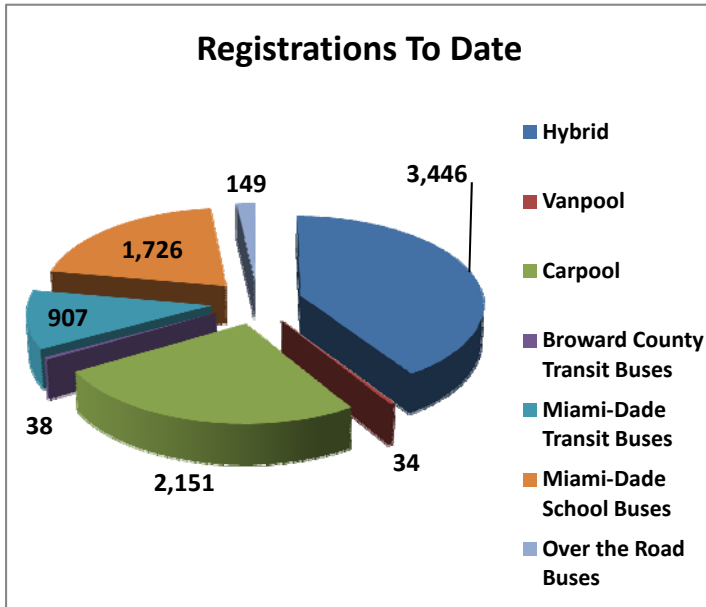


NOTE: ITD = Inception to Date

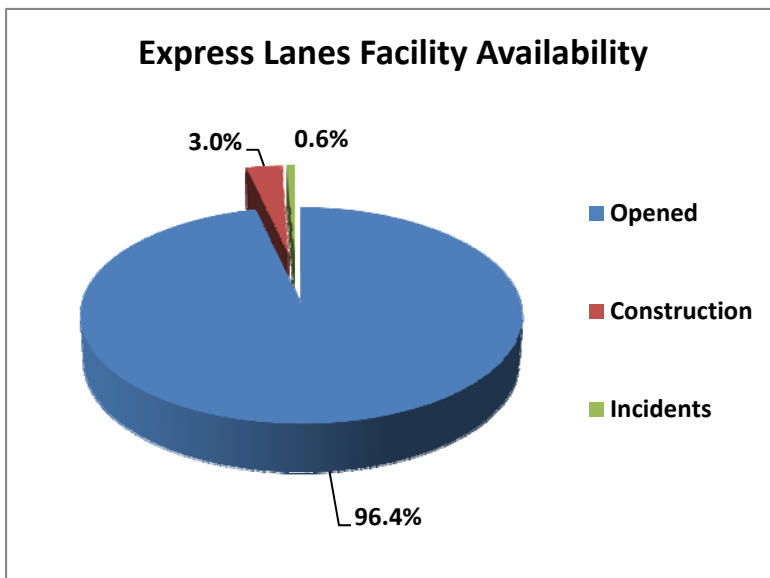


Registrations—Toll Exempt Trips

The total registrations through October 2010 increased to 8,451. *Toll Exempt Trips is not being reported this month due to uncertainties with the transit data. This is currently being investigated and will be reinserted upon confirmation.*



Facility Availability



The entire 95 Express Lanes (both directions) were open to motorists 96.4% of the time, while closed 3.0% due to planned construction and 0.6% due to non-recurring events.