



Summary of Monthly Operations – September 2010

General

On January 15, 2010 the 95 Express Lanes began its southbound operations. This monthly report has been modified to reflect both directions of traffic with all corresponding performance measures. In total, the 95 Express Lanes:

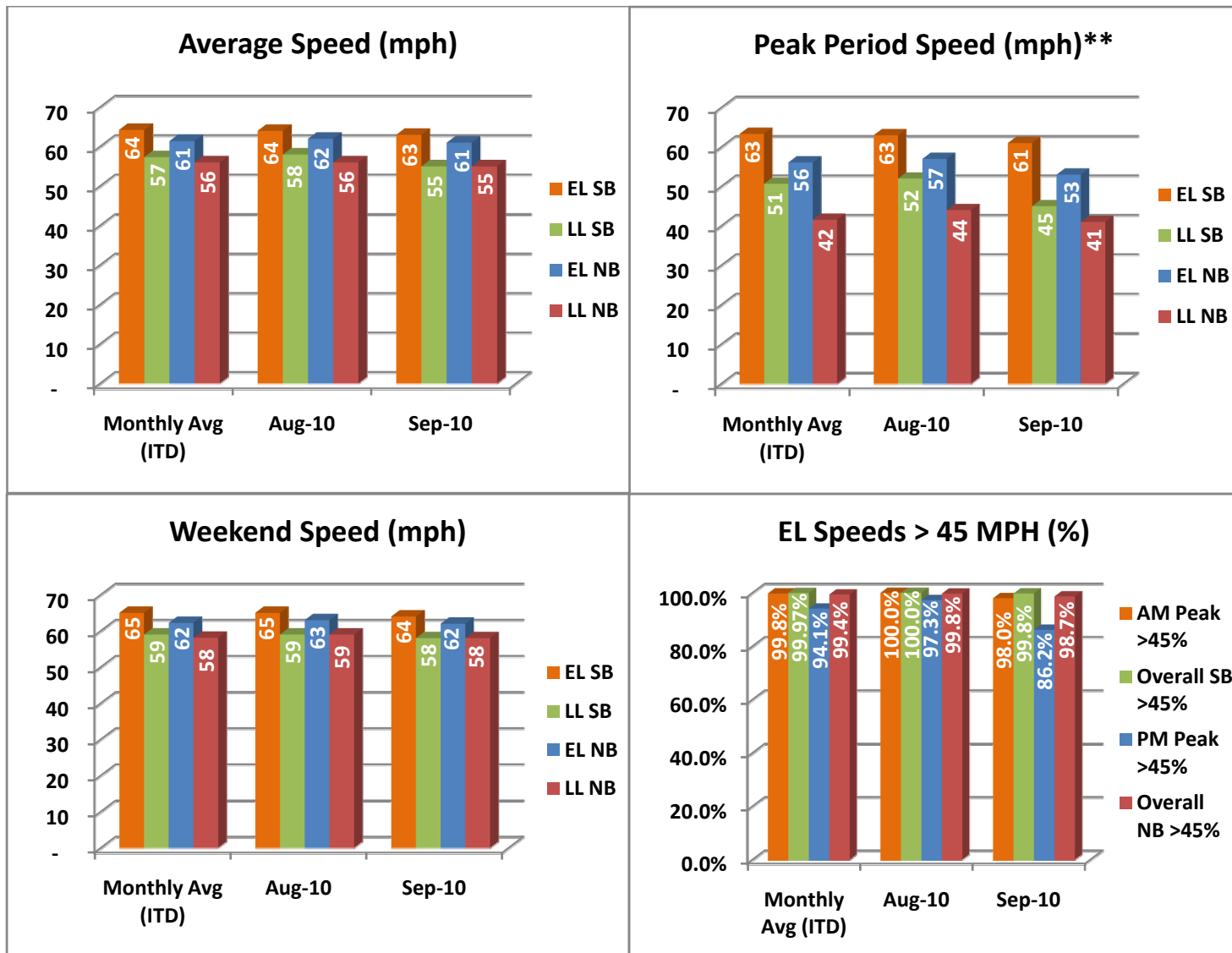
- ✓ Serviced 1,436,154 vehicle trips in September (12.48 million in 2010 to date), bringing the total since opening (December 5, 2008) to approximately 20.4 million trips.
- ✓ Had estimated monthly toll revenue of \$1.19 million in September (\$9.88 million in 2010 to date) bringing the total revenue to date to approximately \$15.1 million.
- ✓ Increased to a total of 8,425 registered vehicles.

<u>September 2010 Statistics</u>	<u>Southbound</u>		<u>Northbound</u>			
Trips	710,020		726,134			
Revenue	\$553,463		\$636,725			
Tolls	\$0.00 - \$5.50		\$0.00 - \$6.00			
- Range	\$0.00 - \$5.50		\$0.00 - \$6.00			
- Avg. Weekday	\$0.99		\$1.11			
- Avg. Peak Period**	\$1.75		\$2.36			
- Avg. Weekend	\$0.24		\$0.24			
- Avg. Off Peak	\$0.58		\$0.59			
- 85 th Percentile Weekday	\$2.00		\$2.25			
Volume (veh)	EL	LL	EL	LL		
- Avg. Weekday	26,905	104,562	27,311	95,302		
- Avg. Peak Period**	8,076	18,851	7,766	17,709		
Speed (mph)	EL	LL	Δ	EL	LL	Δ
- Avg. Overall	63	55	8	61	55	6
- Avg. Peak Period**	61	45	16	53	41	12
Operated Above 45 MPH	99.8%		98.7%			
Remained Open to Motorists	92.6%		94.3%			
Closed due to Planned Construction	6.5%		4.9%			
Closed due to Non-recurring Events	0.8%		0.9%			
<i>EL (Express Lanes); LL (Local Lanes)</i>						
<i>**Peak Period is defined as 6-9 AM (southbound) and 4-7 PM (northbound).</i>						



Operations/Traffic Statistics - Speed Data

** Peak Period is defined as 6-9 AM (southbound) and 4-7 PM (northbound).

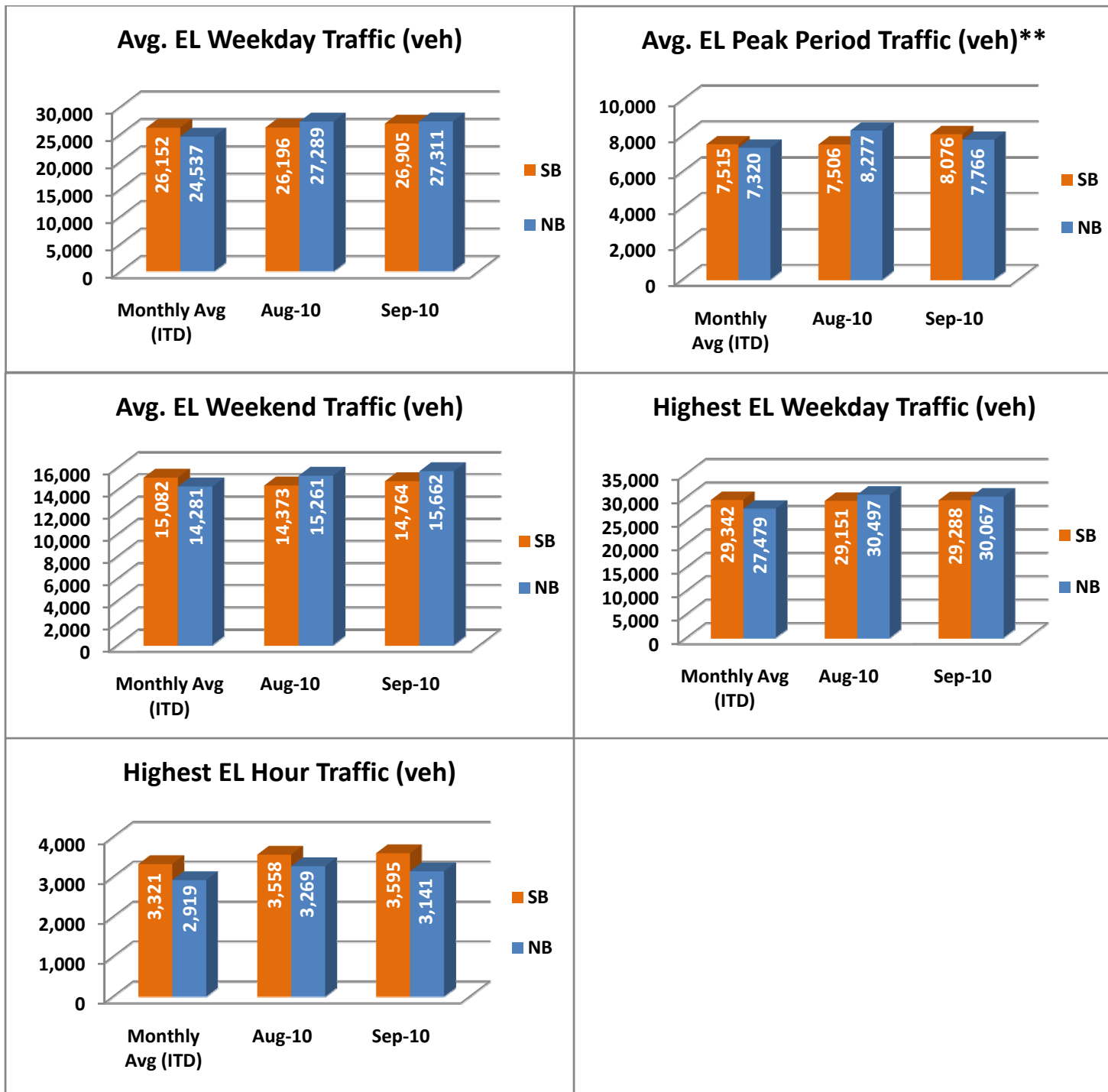


NOTE: ITD = Inception to Date



Operations/Traffic Statistics - Volume Data

** Peak Period is defined as 6-9 AM (southbound) and 4-7 PM (northbound).

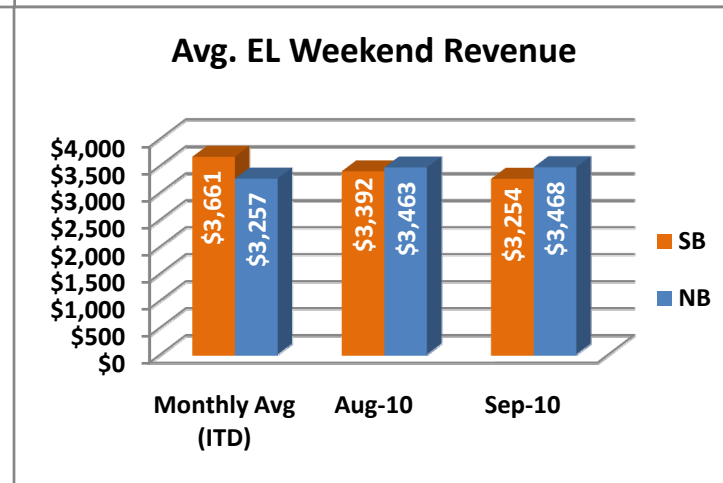
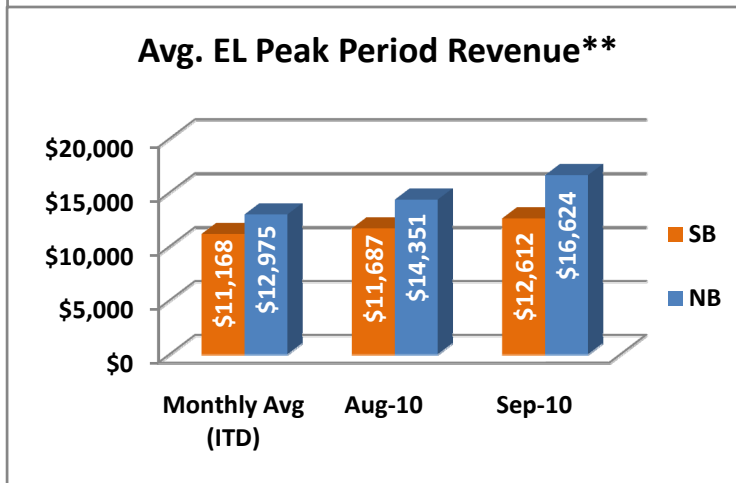
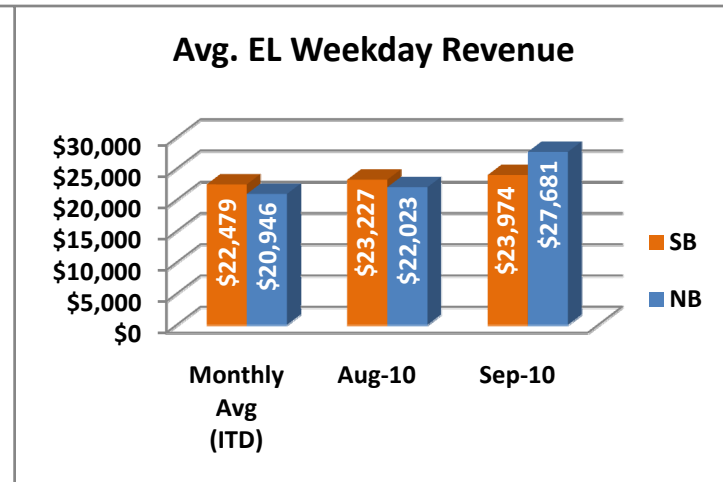
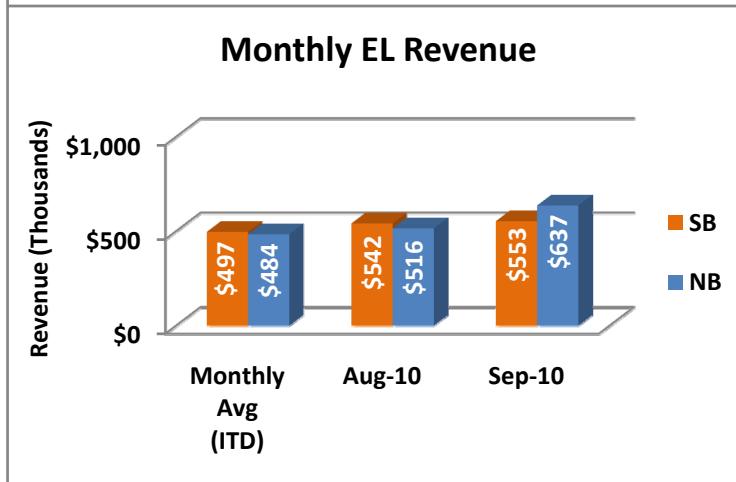
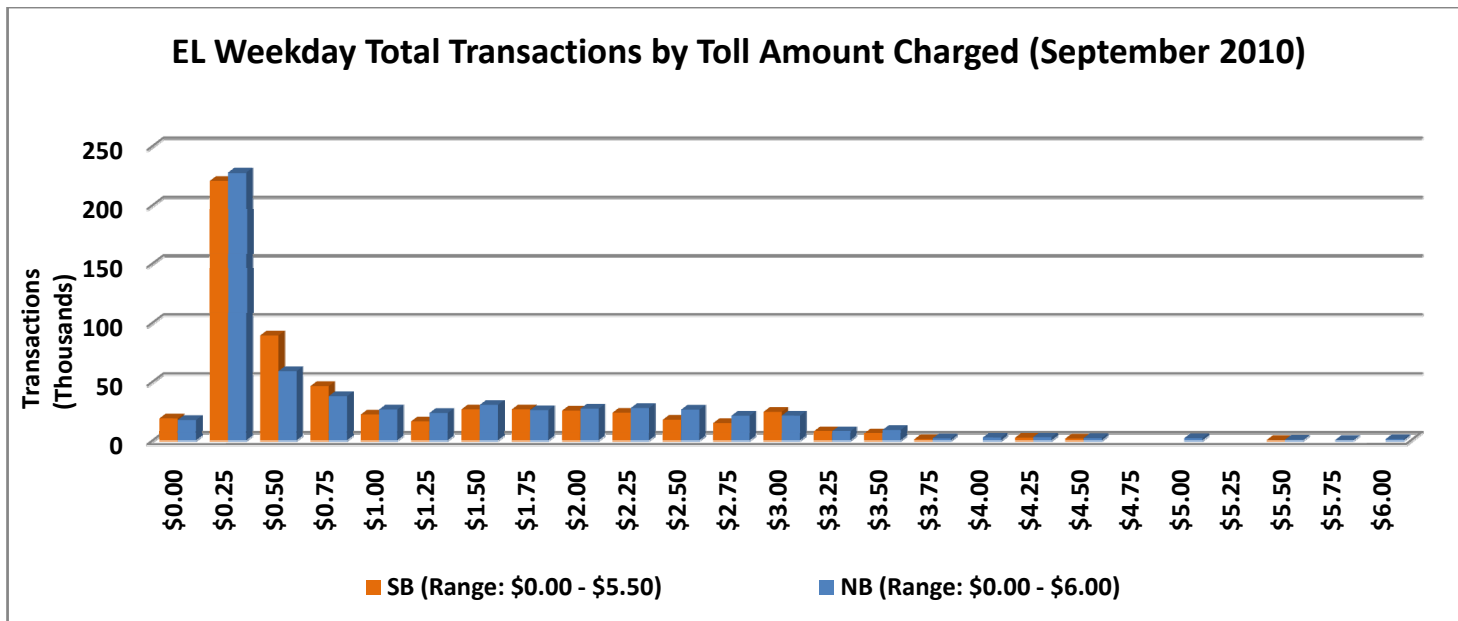


NOTE: ITD = Inception to Date



Revenue/Tolls Statistics

** Peak Period is defined as 6-9 AM (southbound) and 4-7 PM (northbound).

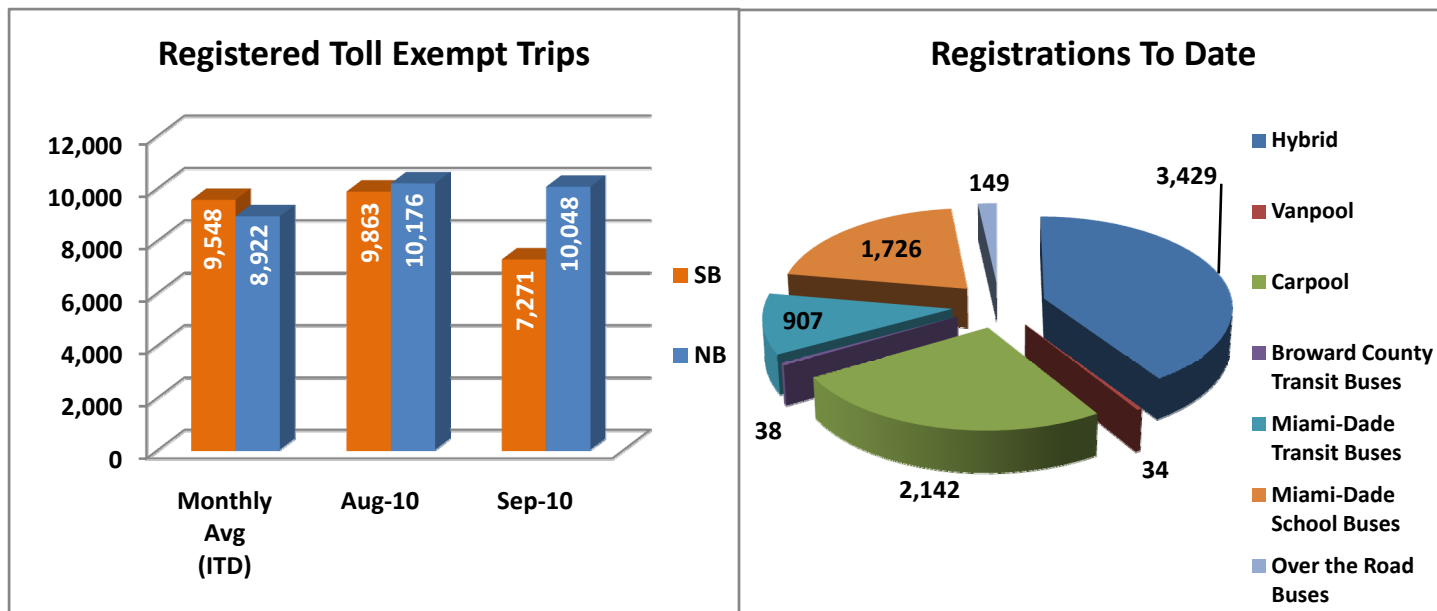


NOTE: ITD = Inception to Date



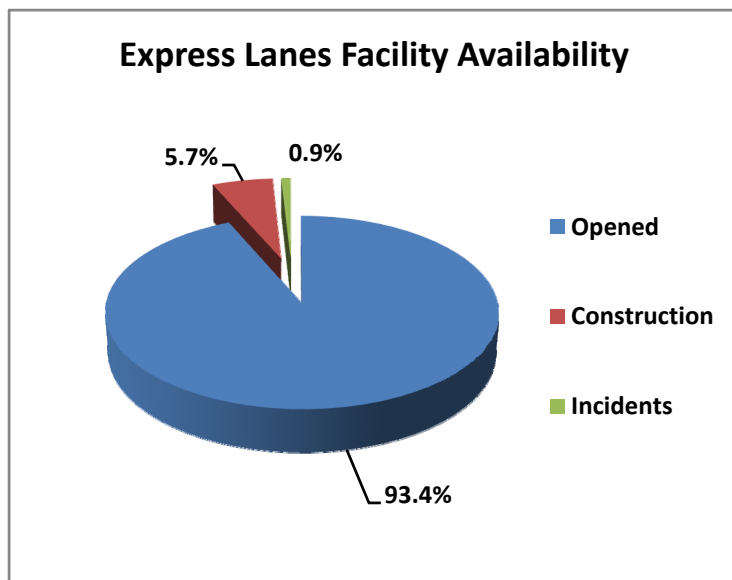
Registrations—Toll Exempt Trips

The total registrations through September 2010 increased to 8,425. There were 17,319 total registered toll exempt vehicle trips for the month of September.



NOTE: ITD = Inception to Date

Facility Availability



The entire 95 Express Lanes (both directions) were open to motorists 93.4% of the time, while closed 5.7% due to planned construction and 0.9% due to non-recurring events.