



Summary of Monthly Operations – December 2010

General

On January 15, 2010 the 95 Express Lanes began its southbound operations. This monthly report has been modified to reflect both directions of traffic with all corresponding performance measures. In total, the 95 Express Lanes:

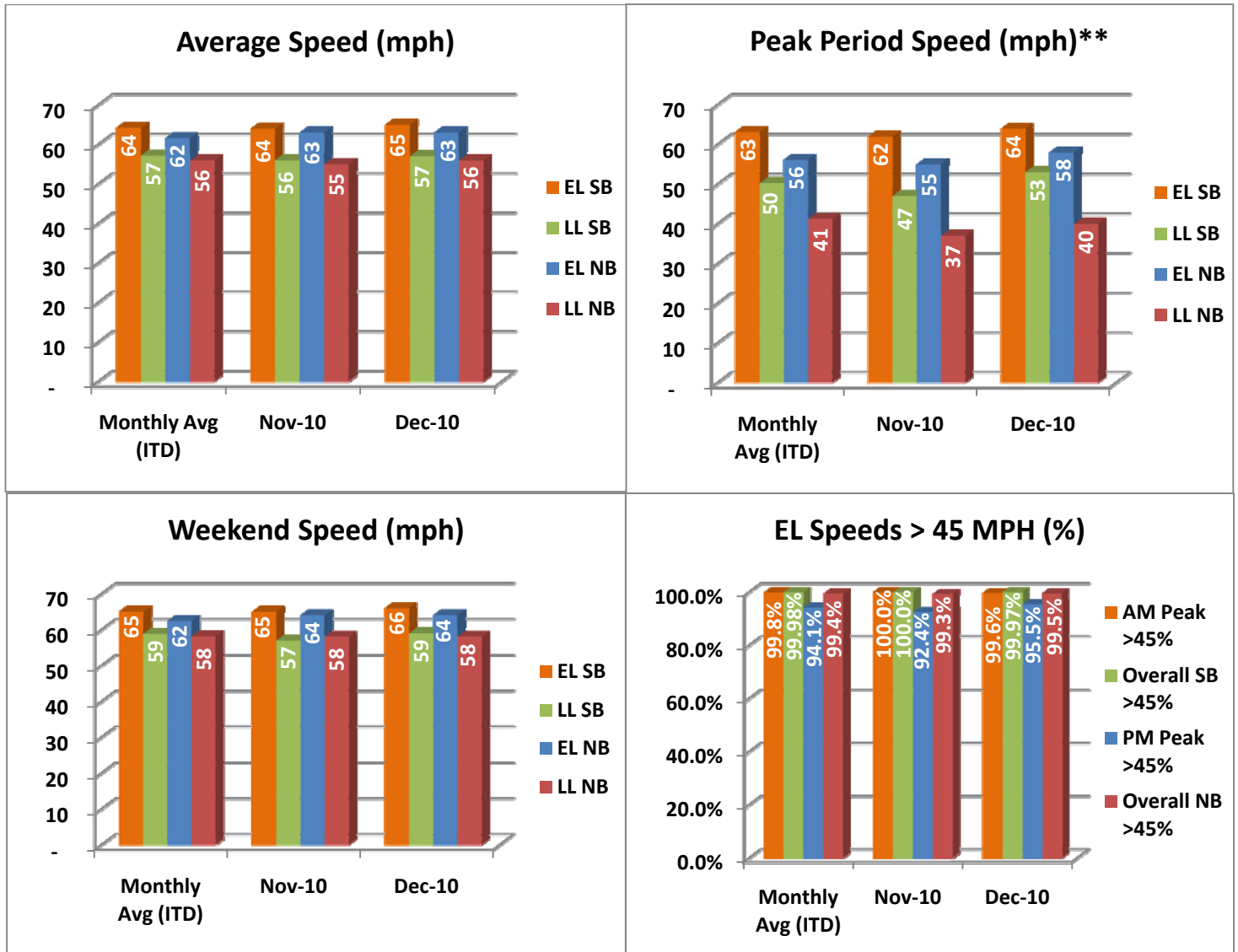
- ✓ Serviced 1,615,486 vehicle trips in December (17.2 million in 2010), bringing the total since opening (December 5, 2008) to approximately 25.1million trips.
- ✓ Had estimated monthly toll revenue of \$1.15 million in December (\$13.5 million in 2010) bringing the total revenue to date to approximately \$18.8 million.
- ✓ Decreased to a total of 8,447 registered vehicles.

<u>December 2010 Statistics</u>	<u>Southbound</u>		<u>Northbound</u>			
Trips	809,227		806,259			
Revenue	\$537,761		\$614,299			
Tolls						
- Range	\$0.00 - \$4.00		\$0.00 - \$7.00			
- Avg. Weekday	\$0.82		\$0.96			
- Avg. Peak Period**	\$1.40		\$2.07			
- Avg. Weekend	\$0.28		\$0.25			
- Avg. Off Peak	\$0.56		\$0.51			
- 85 th Percentile Weekday	\$1.75		\$2.00			
Volume (veh)	EL	LL	EL	LL		
- Avg. Weekday	28,985	109,397	28,864	98,527		
- Avg. Peak Period**	7,415	19,624	7,995	17,979		
Speed (mph)	EL	LL	Δ	EL	LL	Δ
- Avg. Overall	65	57	8	63	56	7
- Avg. Peak Period**	64	53	11	58	40	18
Operated Above 45 MPH	99.97%		99.5%			
Remained Open to Motorists	96.4%		95.5%			
Closed due to Planned Construction	2.6%		3.0%			
Closed due to Non-recurring Events	1.0%		1.5%			
<i>EL (Express Lanes); LL (Local Lanes)</i>						
<i>**Peak Period is defined as 6-9 AM (southbound) and 4-7 PM (northbound).</i>						



Operations/Traffic Statistics - Speed Data

** Peak Period is defined as 6-9 AM (southbound) and 4-7 PM (northbound).

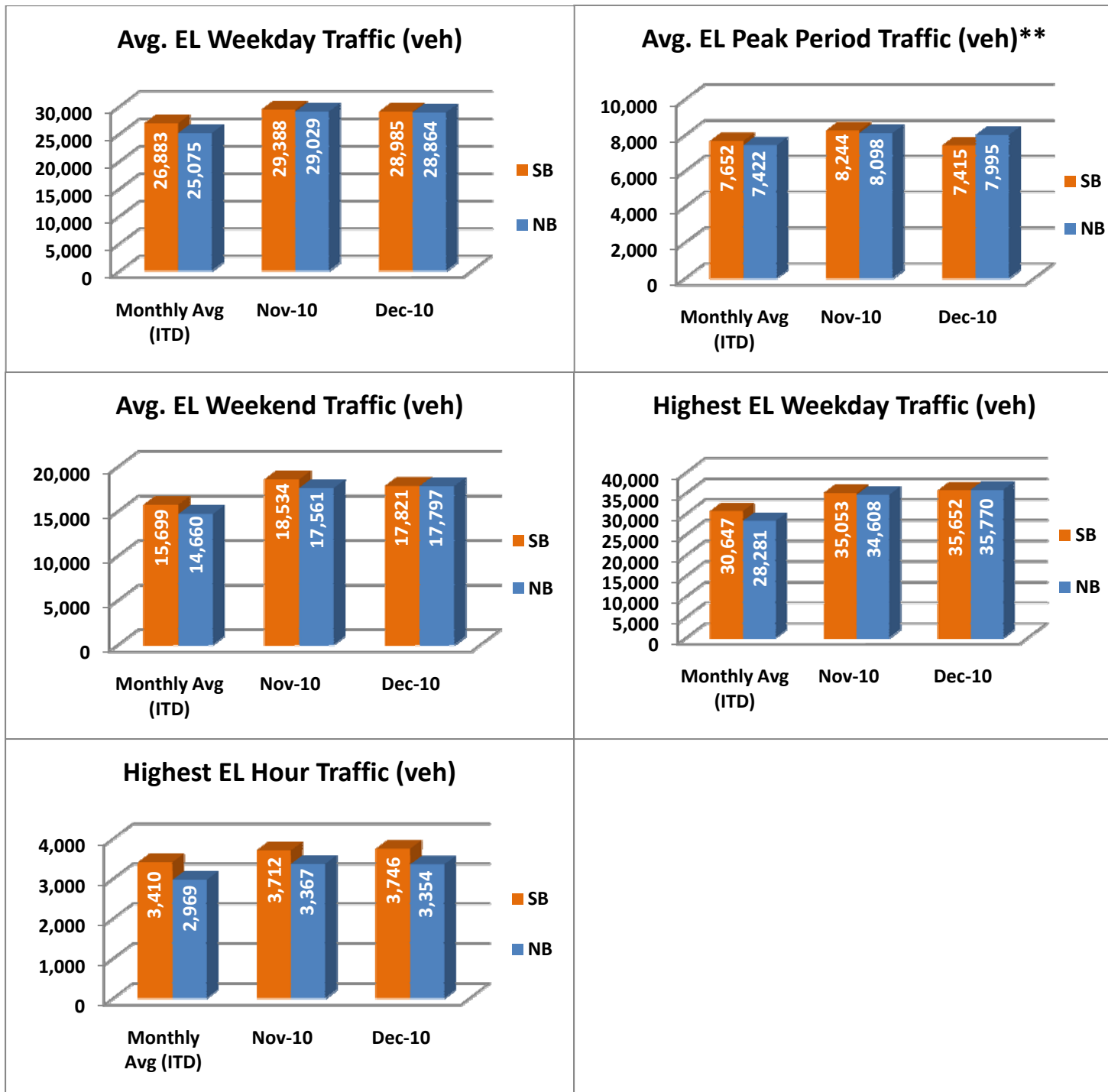


NOTE: ITD = Inception to Date



Operations/Traffic Statistics - Volume Data

** Peak Period is defined as 6-9 AM (southbound) and 4-7 PM (northbound).

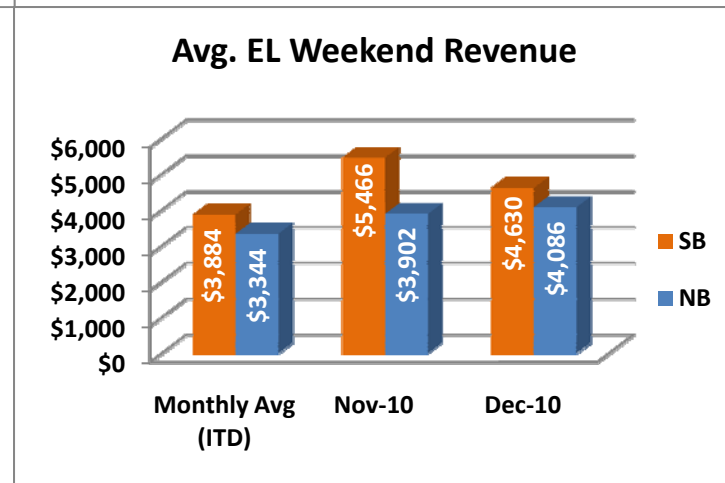
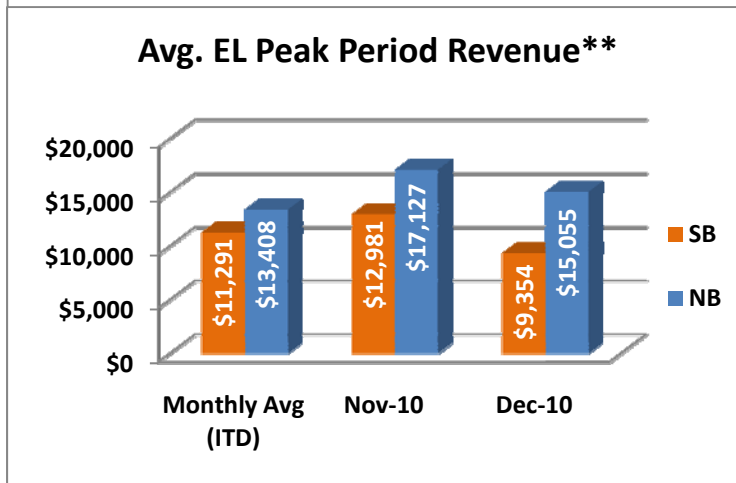
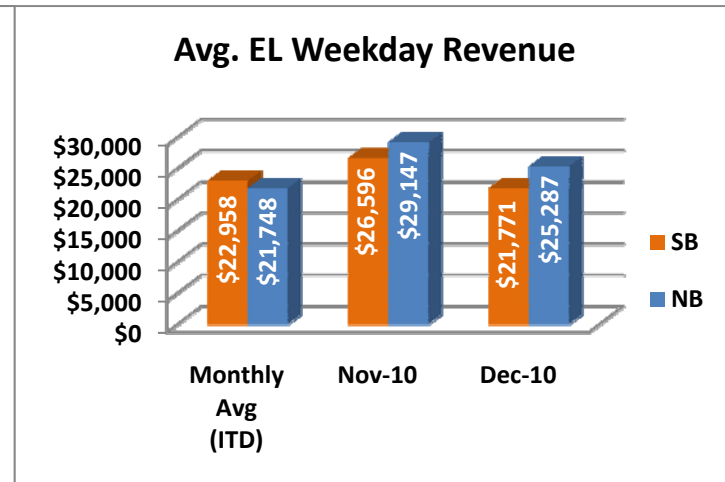
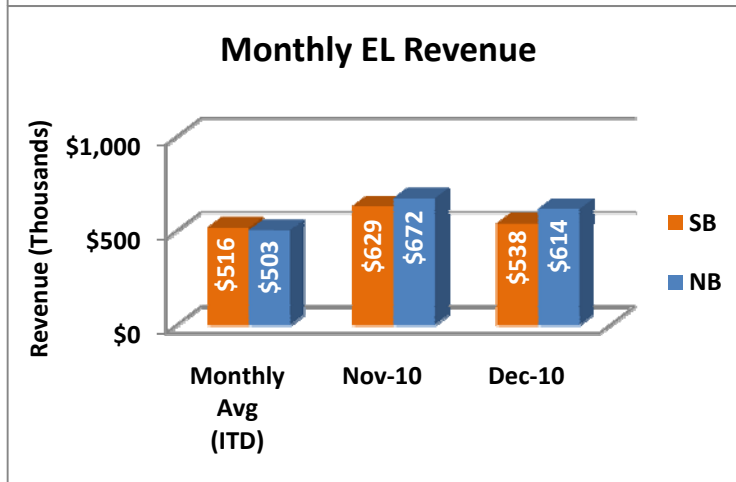
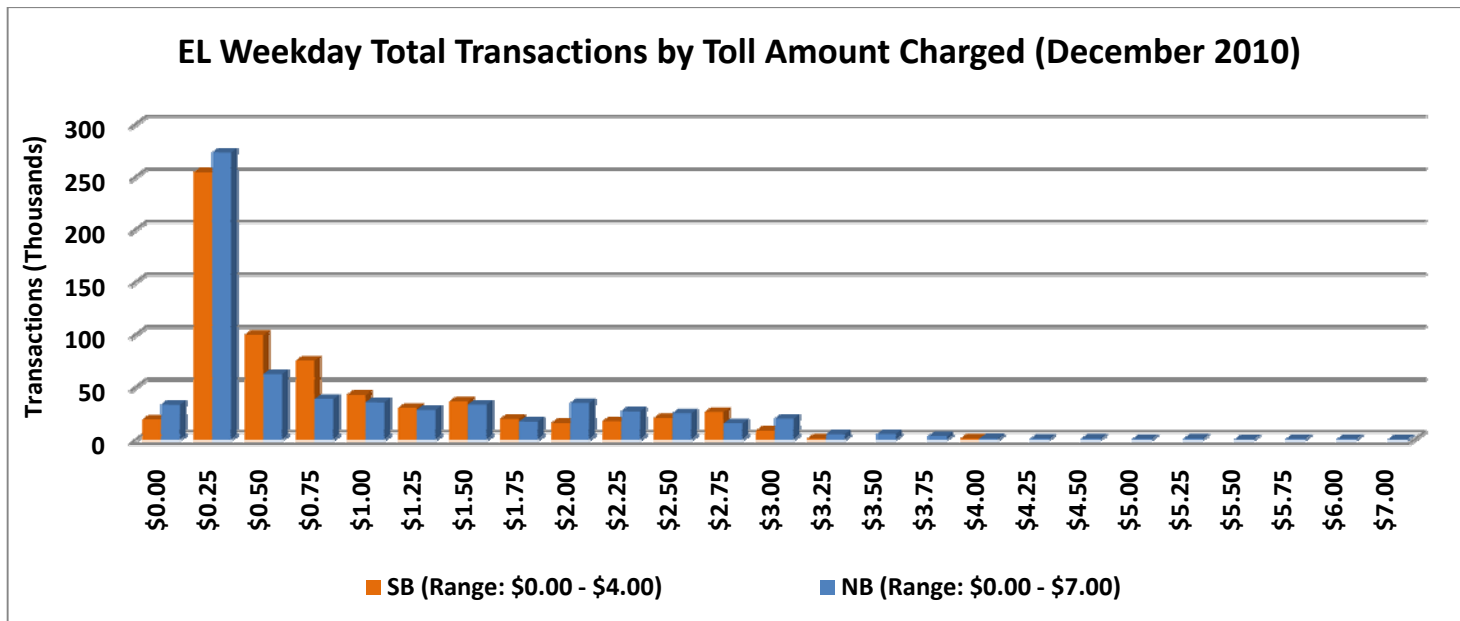


NOTE: ITD = Inception to Date



Revenue/Tolls Statistics

** Peak Period is defined as 6-9 AM (southbound) and 4-7 PM (northbound).

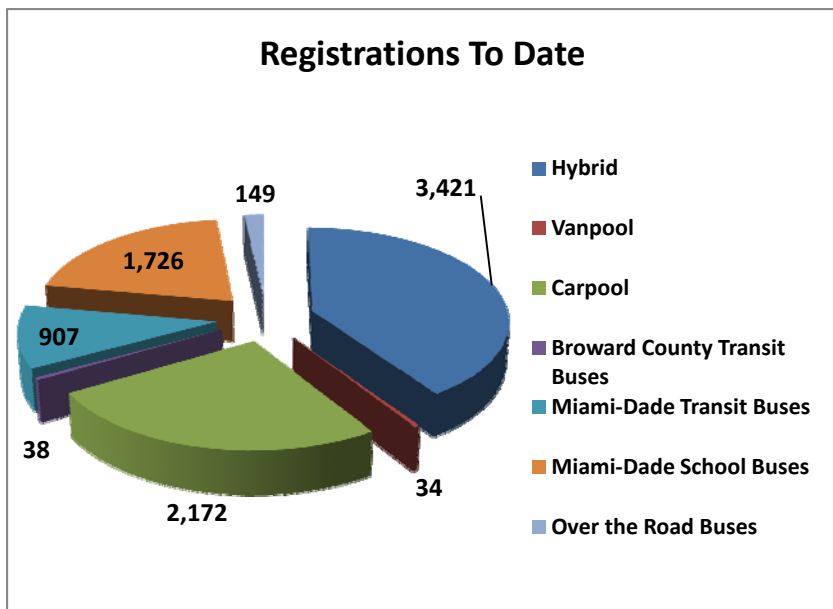


NOTE: ITD = Inception to Date

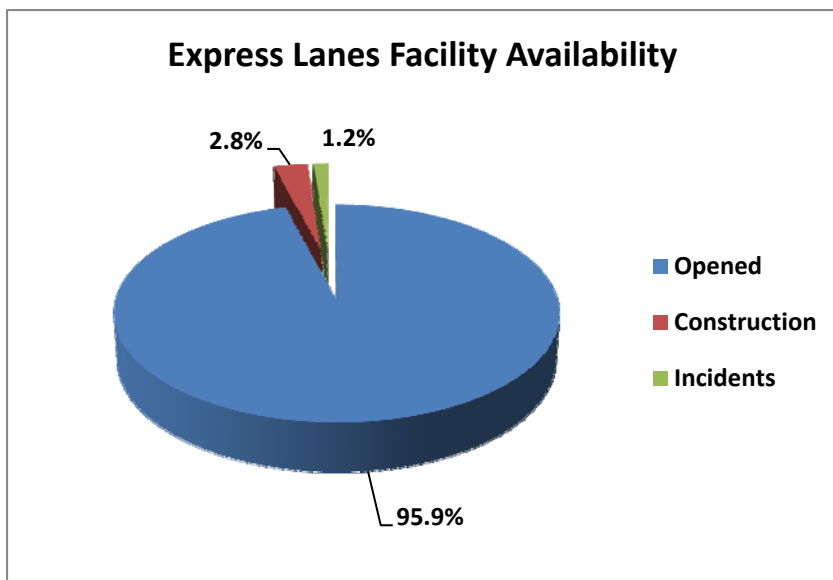


Registrations—Toll Exempt Trips

The total registrations through December 2010 decreased to 8,447. *Toll Exempt Trips is not being reported this month due to uncertainties with the transit data. This is currently being investigated and will be reinserted upon confirmation.*



Facility Availability



The entire 95 Express Lanes (both directions) were open to motorists 95.9% of the time, while closed 2.8% due to planned construction and 1.2% due to non-recurring events.