



## Summary of Monthly Operations – January 2011

### General

January 2011 marked the one year anniversary for full operations of Phase 1 of 95 Express. The format of this report will remain as modified a year ago. In total, the 95 Express Lanes:

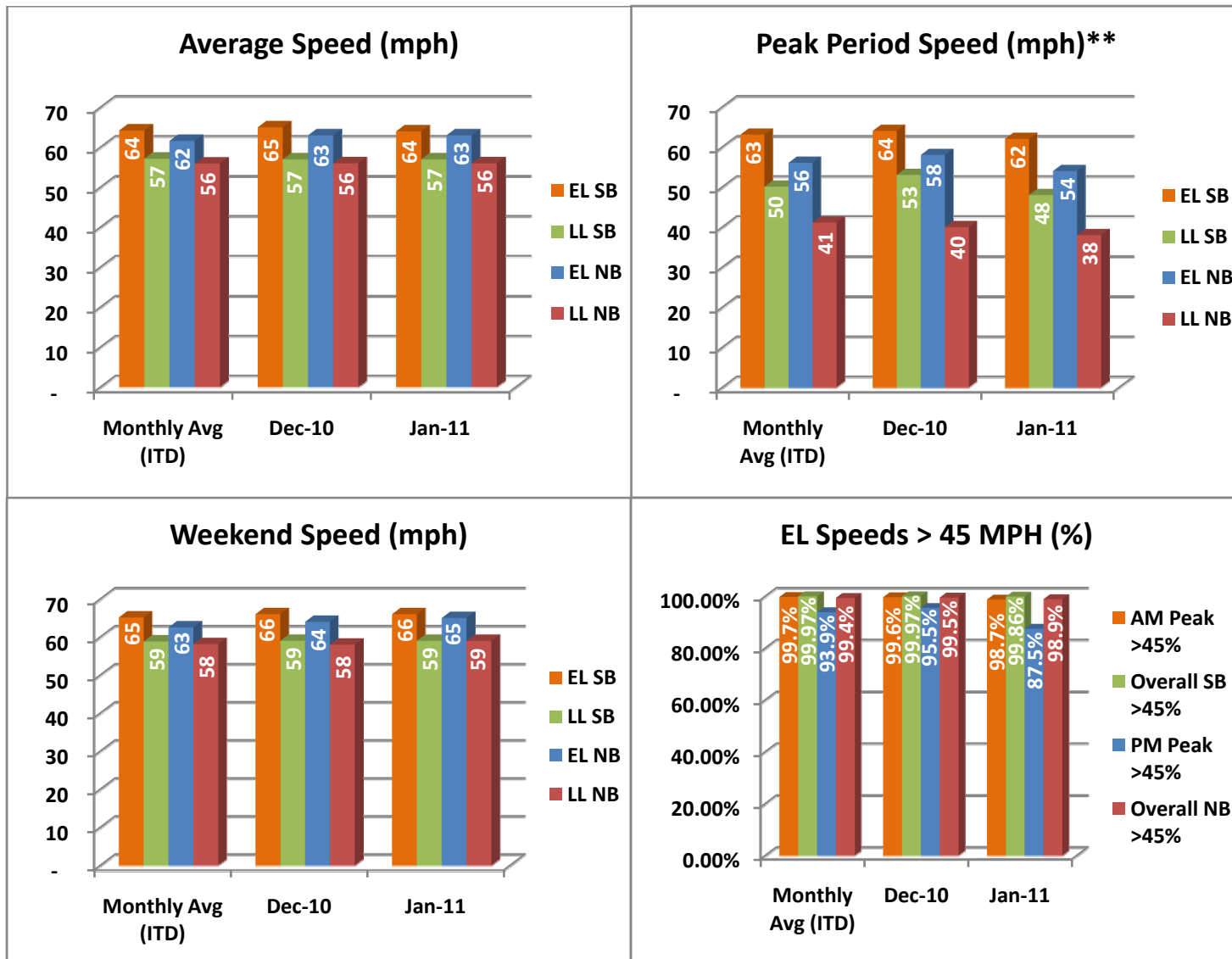
- ✓ Serviced 1,627,650 vehicle trips in January 2011, bringing the total since opening (December 5, 2008) to approximately 26.8 million trips.
- ✓ Had estimated monthly toll revenue of \$1.27 million in January 2011, bringing the total revenue to date to approximately \$20.0 million.
- ✓ Decreased to a total of 8,431 registered vehicles.

<u>January 2011 Statistics</u>	<u>Southbound</u>			<u>Northbound</u>		
<b>Trips</b>	819,372			808,278		
<b>Revenue</b>	\$624,199			\$649,501		
<b>Tolls</b>						
- Range	\$0.00 - \$4.75			\$0.00 - \$7.00		
- Avg. Weekday	\$1.00			\$1.06		
- Avg. Peak Period**	\$1.66			\$2.21		
- Avg. Weekend	\$0.26			\$0.24		
- Avg. Off Peak	\$0.45			\$0.59		
- 85 <sup>th</sup> Percentile Weekday	\$2.00			\$2.00		
<b>Volume (veh)</b>	<b>EL</b>	<b>LL</b>		<b>EL</b>	<b>LL</b>	
- Avg. Weekday	30,541	106,002		29,841	98,435	
- Avg. Peak Period**	8,708	18,983		8,255	17,770	
<b>Speed (mph)</b>	<b>EL</b>	<b>LL</b>	<b>Δ</b>	<b>EL</b>	<b>LL</b>	<b>Δ</b>
- Avg. Overall	64	57	7	63	56	7
- Avg. Peak Period**	62	48	14	54	38	16
<b>Operated Above 45 MPH</b>	99.9%			98.9%		
<b>Remained Open to Motorists</b>	95.8%			95.3%		
<b>Closed due to Planned Construction</b>	3.0%			3.1%		
<b>Closed due to Non-recurring Events</b>	1.2%			1.5%		
<i>EL (Express Lanes); LL (Local Lanes)</i>						
<i>**Peak Period is defined as 6-9 AM (southbound) and 4-7 PM (northbound).</i>						



## Operations/Traffic Statistics - Speed Data

\*\* Peak Period is defined as 6-9 AM (southbound) and 4-7 PM (northbound).

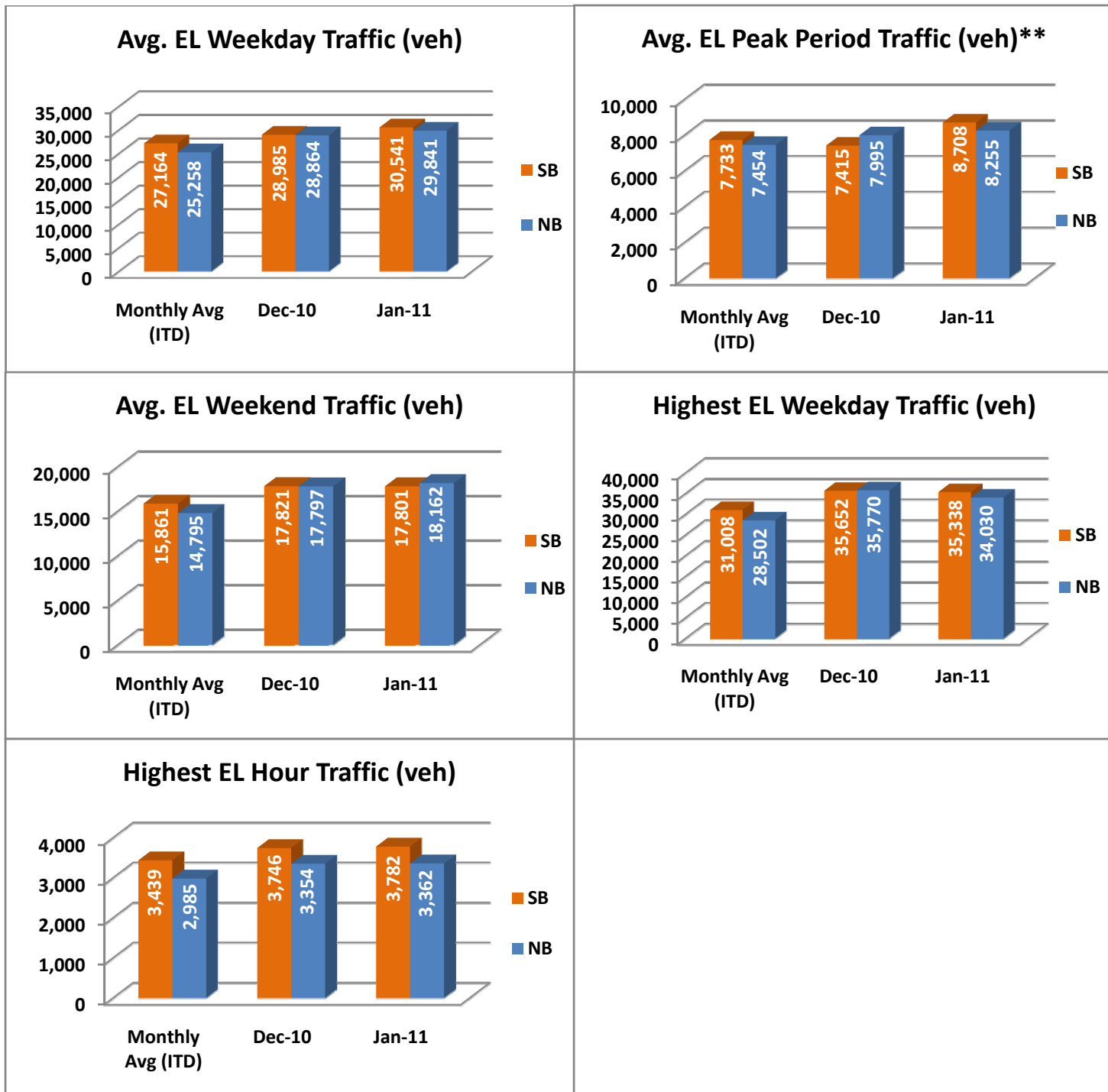


NOTE: ITD = Inception to Date



## Operations/Traffic Statistics - Volume Data

\*\* Peak Period is defined as 6-9 AM (southbound) and 4-7 PM (northbound).

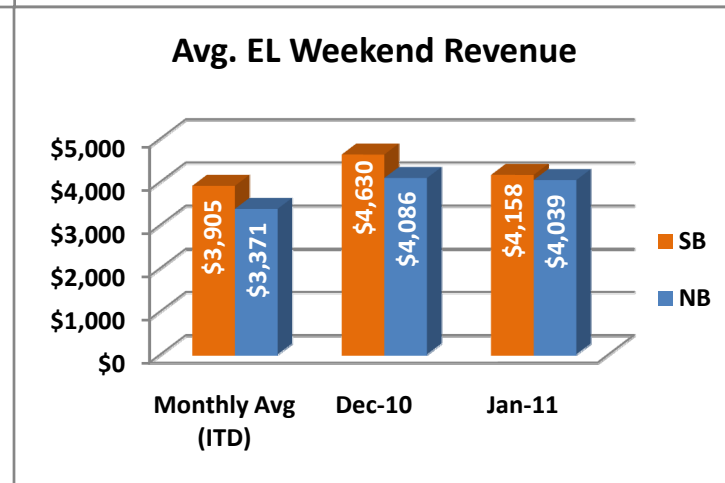
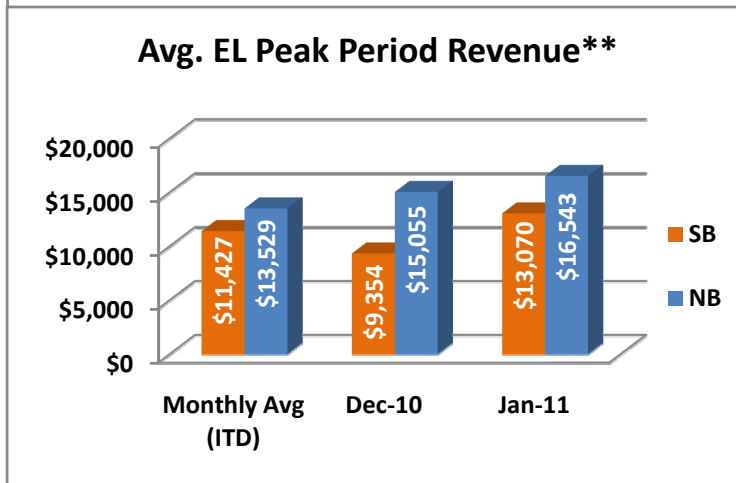
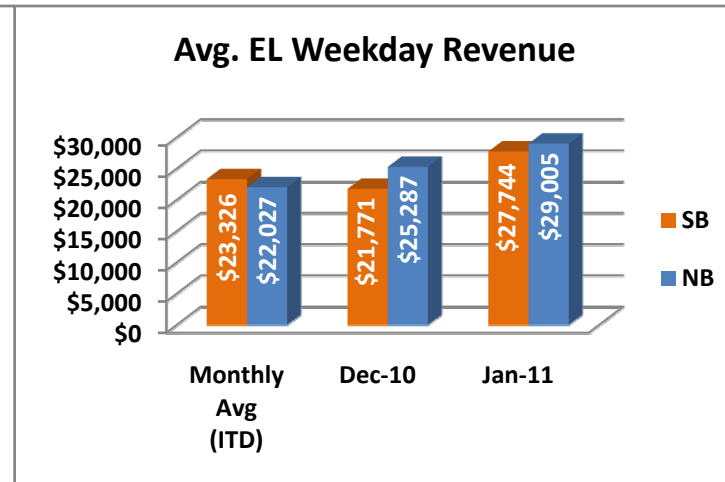
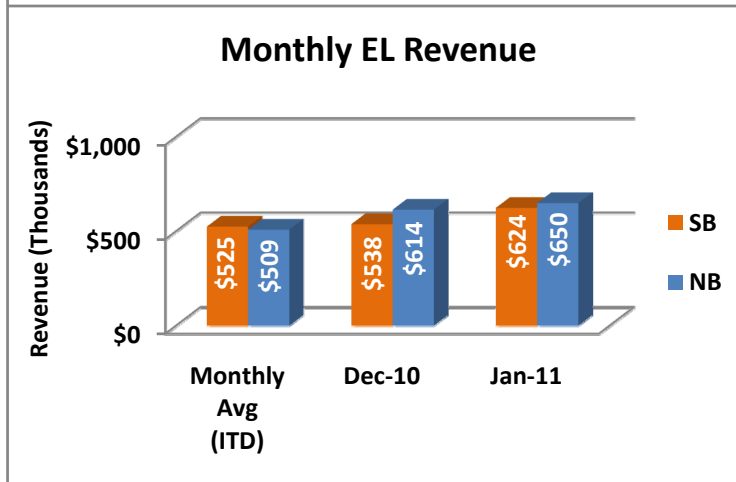
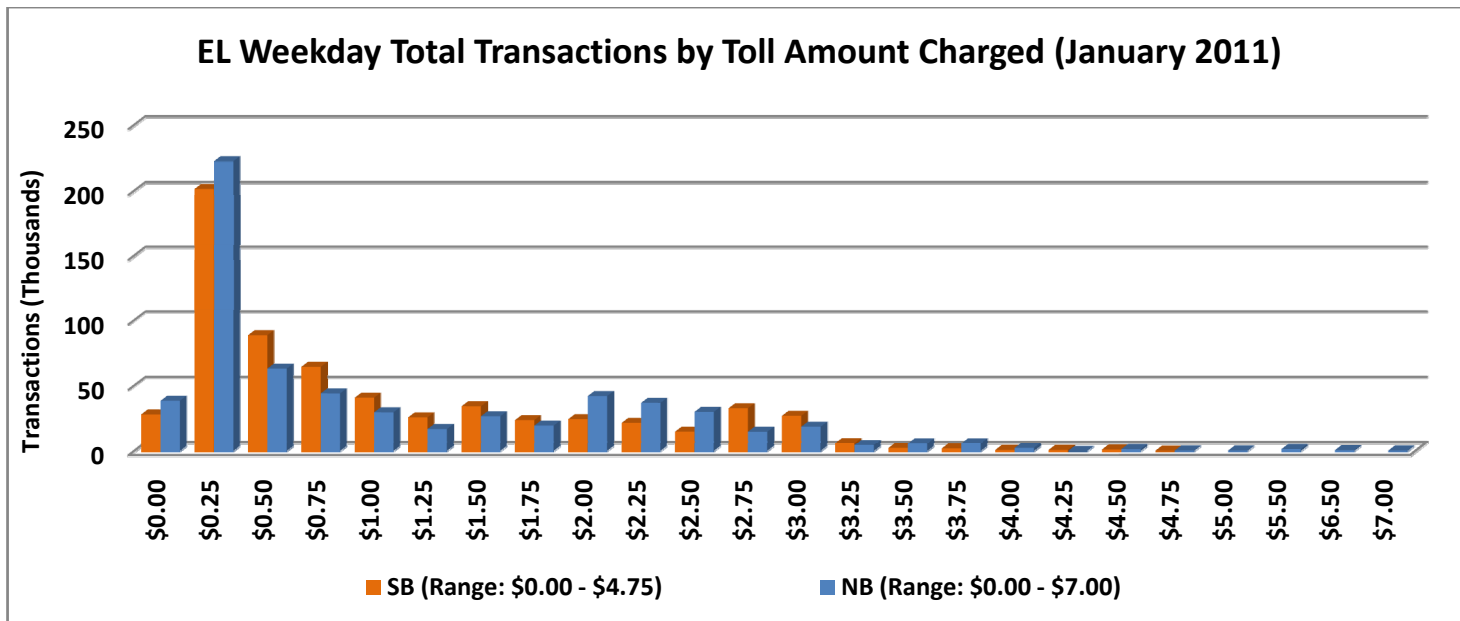


NOTE: ITD = Inception to Date



## Revenue/Tolls Statistics

\*\* Peak Period is defined as 6-9 AM (southbound) and 4-7 PM (northbound).

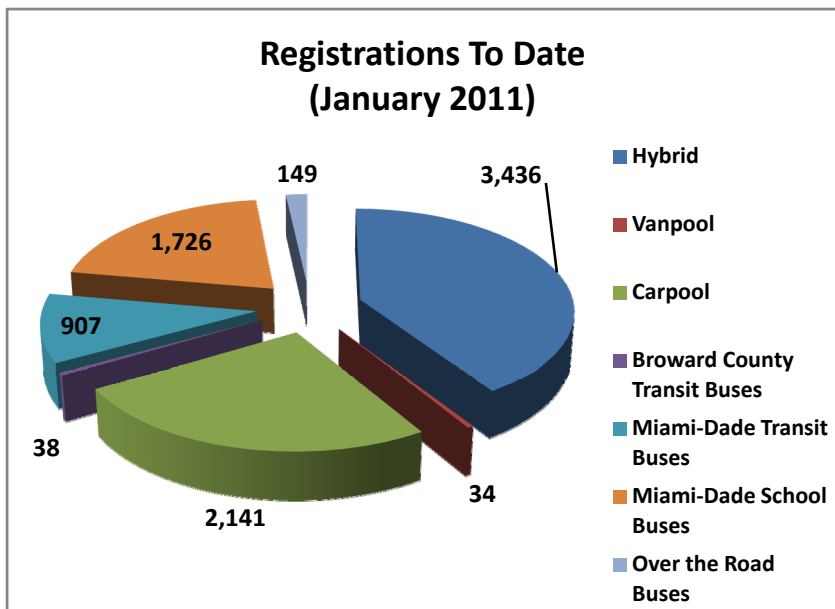


NOTE: ITD = Inception to Date

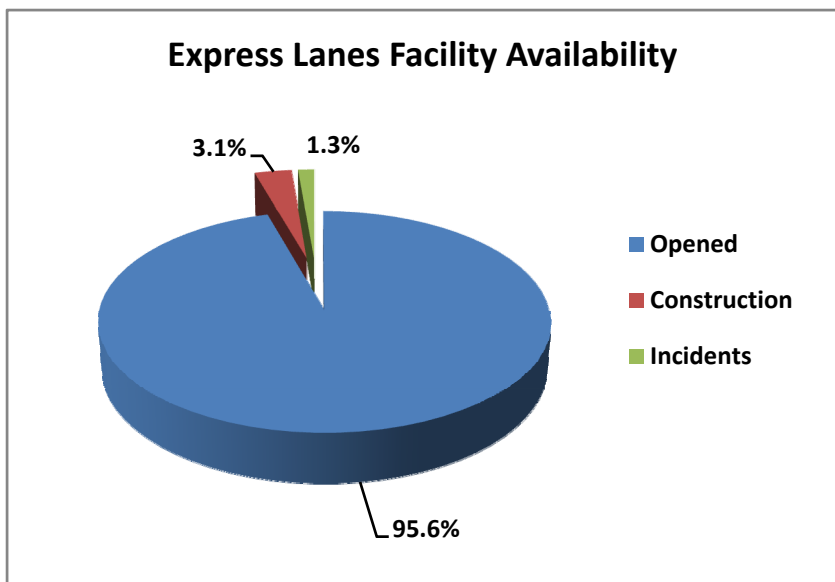


## Registrations—Toll Exempt Trips

The total registrations through January 2011 decreased to 8,431. *Toll Exempt Trips is not being reported this month due to uncertainties with the transit data. This is currently being investigated and will be reinserted upon confirmation.*



## Facility Availability



The entire 95 Express Lanes (both directions) were open to motorists 95.6% of the time, while closed 3.1% due to planned construction and 1.3% due to non-recurring events.