



## Summary of Monthly Operations – February 2011

### General

January 2011 marked the one year anniversary for full operations of Phase 1 of 95 Express. The format of this report will remain as modified a year ago. In total, the 95 Express Lanes:

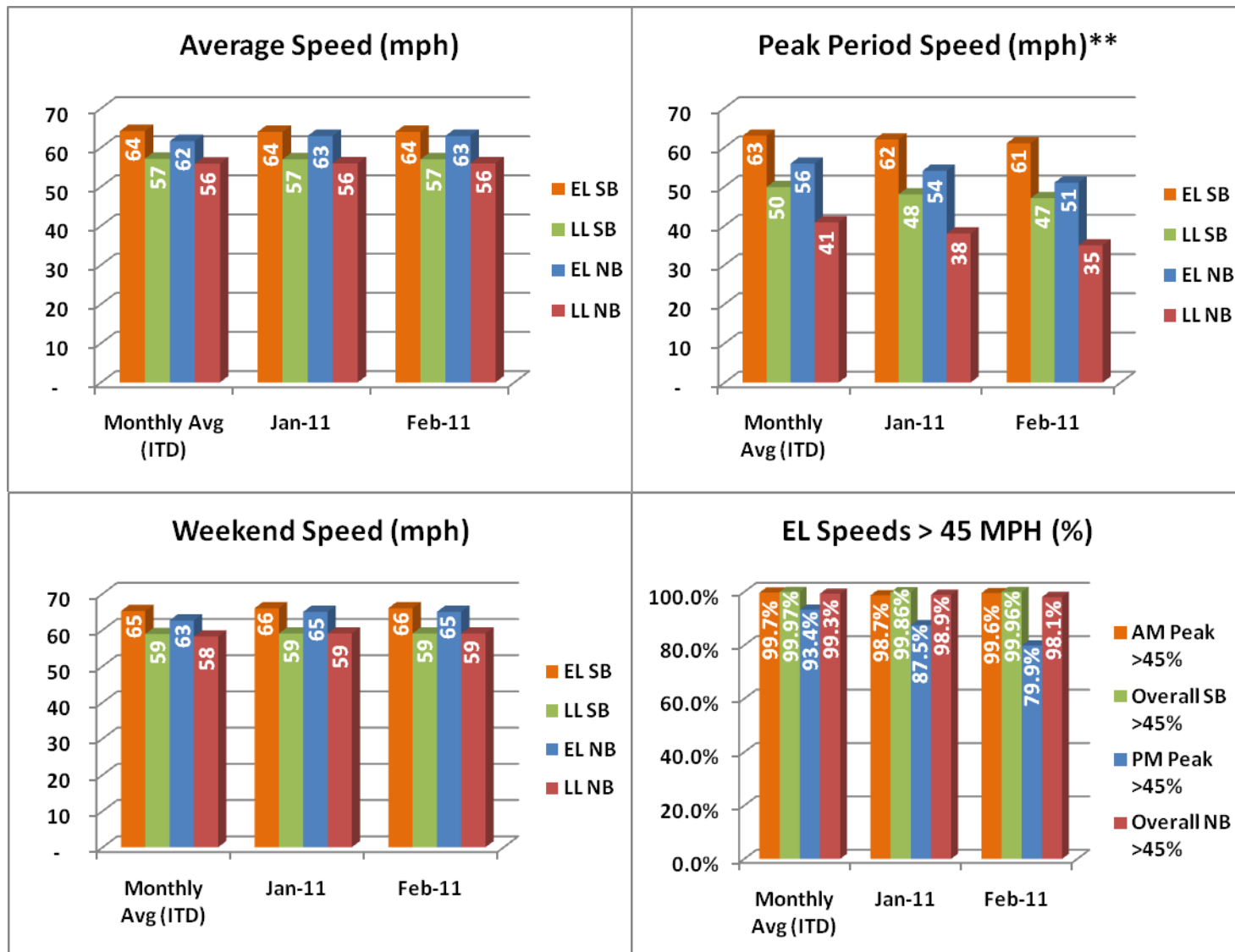
- ✓ Serviced 1,616,391 vehicle trips in February 2011 (3.24 million trips in 2011 to date), bringing the total since opening (December 5, 2008) to approximately 28.4 million trips.
- ✓ Had estimated monthly toll revenue of \$1.36 million in February 2011 (\$2.64 million in revenue in 2011 to date), bringing the total revenue to date to approximately \$21.4 million.
- ✓ Increased to a total of 8,518 registered vehicles.

<u>February 2011 Statistics</u>	<u>Southbound</u>			<u>Northbound</u>		
<b>Trips</b>	816,724			799,667		
<b>Revenue</b>	\$636,692			\$725,042		
<b>Tolls</b>						
- Range	\$0.00 - \$4.25			\$0.00 - \$7.00		
- Avg. Weekday	\$1.01			\$1.19		
- Avg. Peak Period**	\$1.75			\$2.57		
- Avg. Weekend	\$0.30			\$0.28		
- Avg. Off Peak	\$0.63			\$0.63		
- 85 <sup>th</sup> Percentile Weekday	\$2.00			\$2.50		
<b>Volume (veh)</b>	<b>EL</b>	<b>LL</b>		<b>EL</b>	<b>LL</b>	
- Avg. Weekday	32,346	107,580		31,821	101,191	
- Avg. Peak Period**	8,900	18,405		8,786	17,699	
<b>Speed (mph)</b>	<b>EL</b>	<b>LL</b>	<b>Δ</b>	<b>EL</b>	<b>LL</b>	<b>Δ</b>
- Avg. Overall	64	57	7	63	56	7
- Avg. Peak Period**	61	47	14	51	35	16
<b>Operated Above 45 MPH</b>	99.96%			98.1%		
<b>Remained Open to Motorists</b>	94.9%			94.3%		
<b>Closed due to Planned Construction</b>	3.9%			3.6%		
<b>Closed due to Non-recurring Events</b>	1.2%			2.1%		
<i>EL (Express Lanes); LL (Local Lanes)</i>						
<i>**Peak Period is defined as 6-9 AM (southbound) and 4-7 PM (northbound).</i>						



## Operations/Traffic Statistics - Speed Data

\*\* Peak Period is defined as 6-9 AM (southbound) and 4-7 PM (northbound).

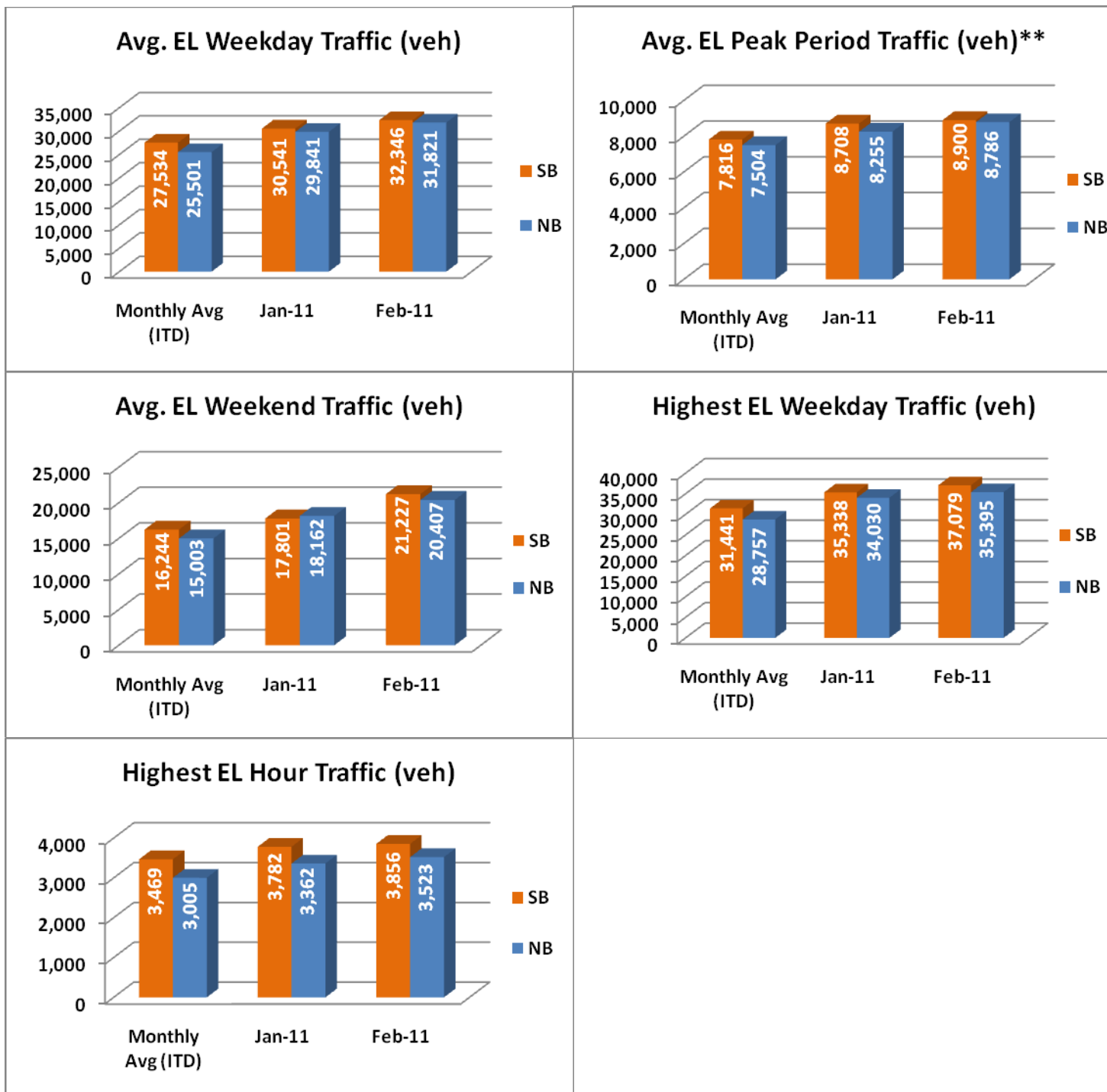


NOTE: ITD = Inception to Date



## Operations/Traffic Statistics - Volume Data

\*\* Peak Period is defined as 6-9 AM (southbound) and 4-7 PM (northbound).

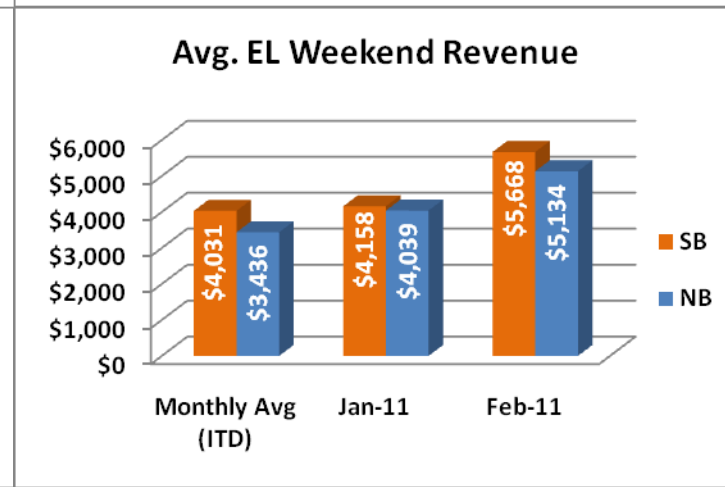
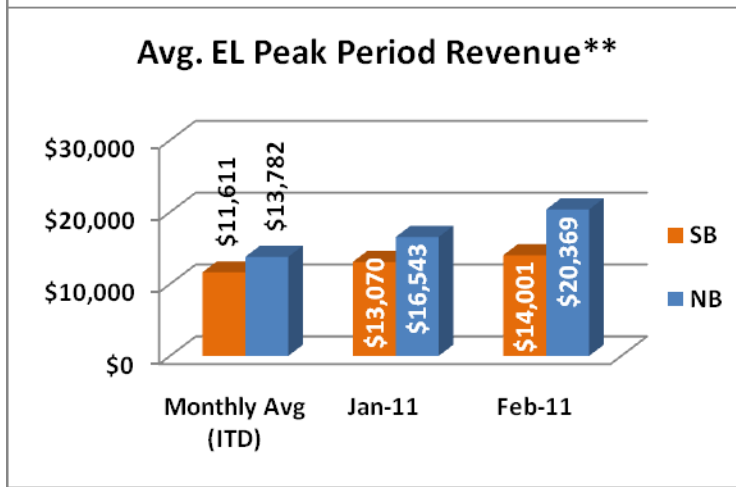
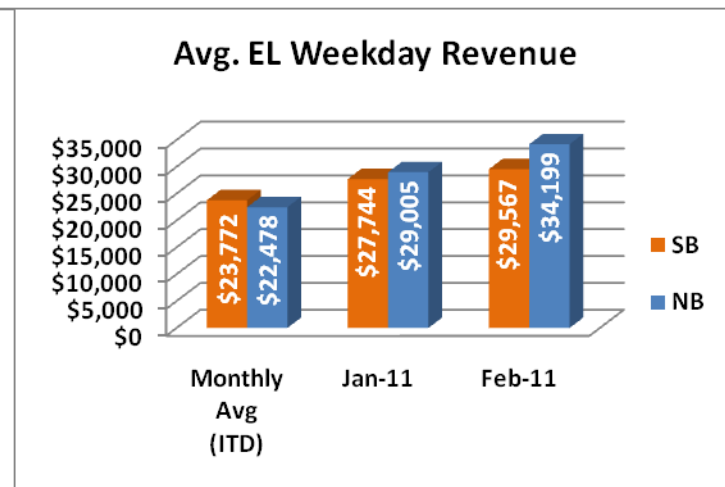
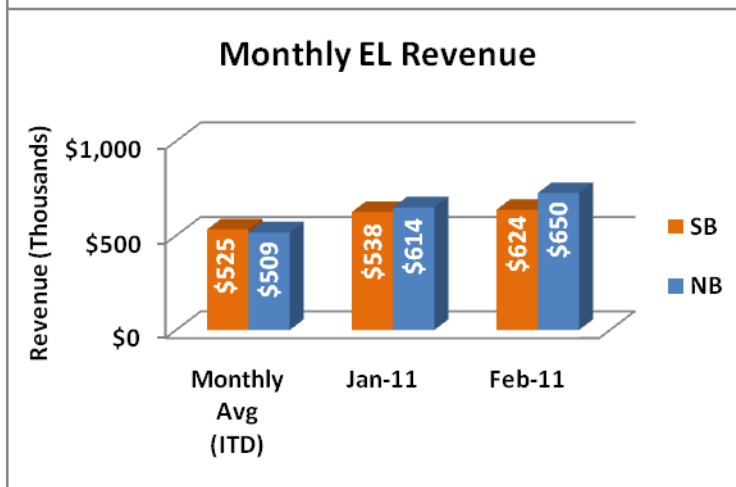
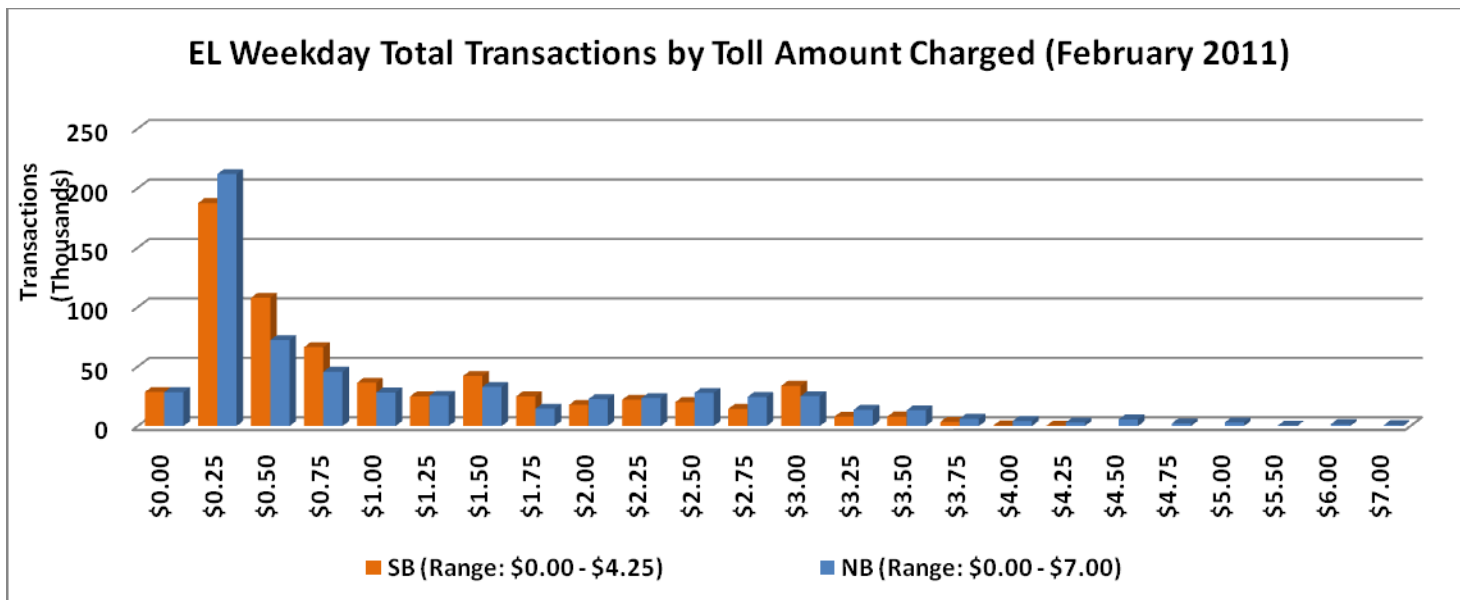


NOTE: ITD = Inception to Date



## Revenue/Tolls Statistics

\*\* Peak Period is defined as 6-9 AM (southbound) and 4-7 PM (northbound).





# FDOT District Six – 95 Express Monthly Operations Report February 2011

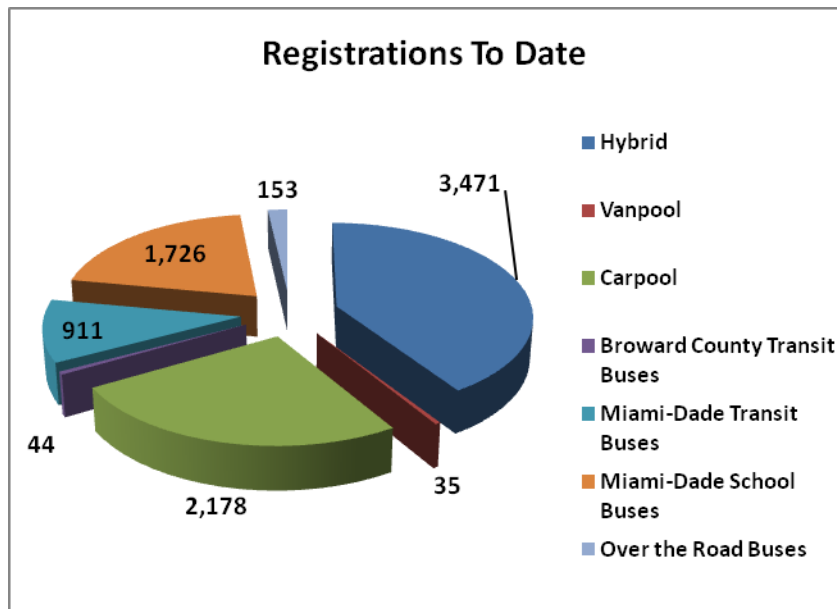


NOTE: ITD = Inception to Date

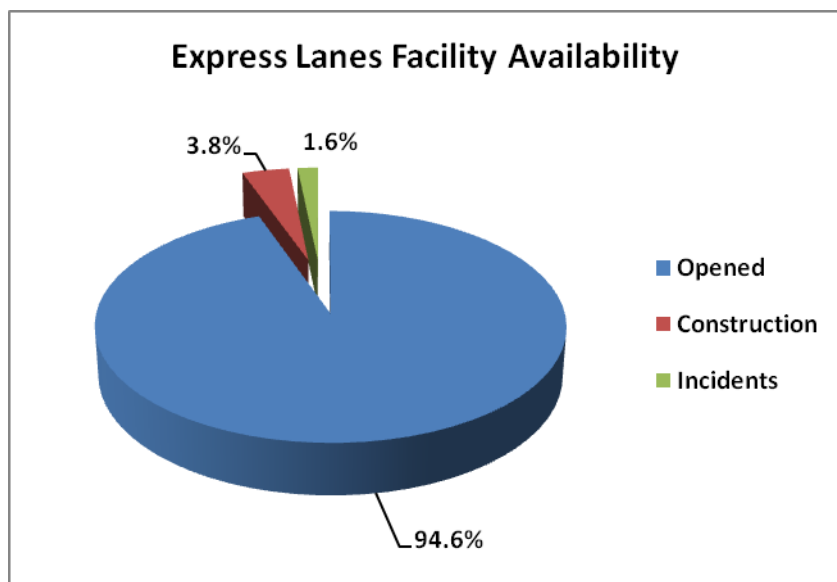


## Registrations—Toll Exempt Trips

The total registrations through February 2011 increased to 8,518. *Toll Exempt Trips is not being reported this month due to uncertainties with the transit data. This is currently being investigated and will be reinserted upon confirmation.*



## Facility Availability



The entire 95 Express Lanes (both directions) were open to motorists 94.6% of the time, while closed 3.8% due to planned construction and 1.6% due to non-recurring events.