



## Summary of Monthly Operations – June 2011

### General

January 2011 marked the one year anniversary for full operations of Phase 1 of 95 Express. The format of this report will remain as modified a year ago. In total, the 95 Express Lanes:

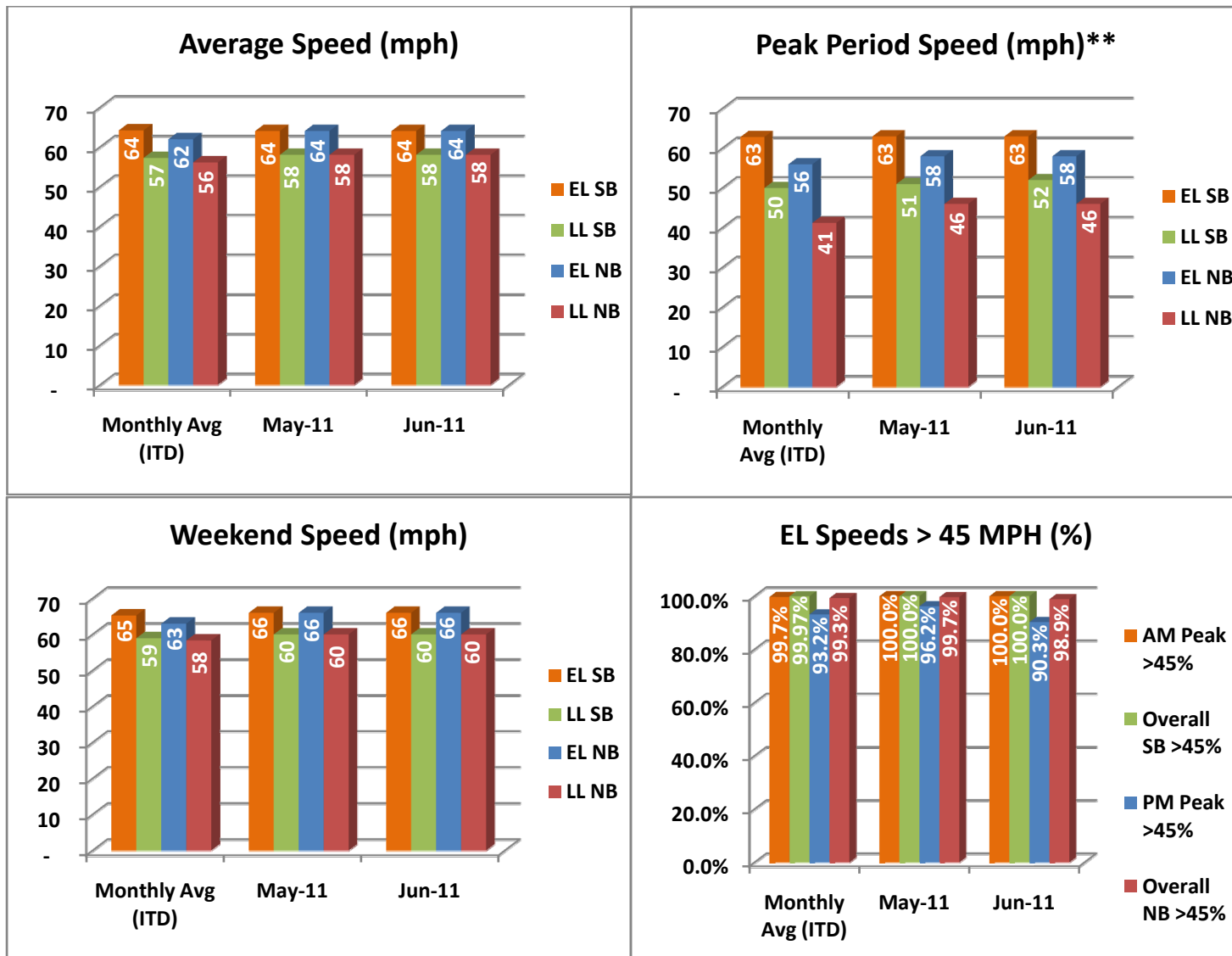
- ✓ Serviced 1,601,345 vehicle trips in June 2011 (10.1 million trips in 2011 to date), bringing the total since opening (December 5, 2008) to approximately 35.2 million trips.
- ✓ Had estimated monthly toll revenue of \$1.21 million in June 2011 (\$8.15 million in revenue in 2011 to date), bringing the total revenue to date to approximately \$26.9 million.
- ✓ Increased to a total of 8,656 registered vehicles.

<u>June 2011 Statistics</u>	<u>Southbound</u>			<u>Northbound</u>		
<b>Trips</b>	803,637			797,708		
<b>Revenue</b>	\$601,973			\$609,138		
<b>Tolls</b>						
- Range	\$0.00 - \$3.75			\$0.00 - \$7.00		
- Avg. Weekday	\$0.97			\$1.01		
- Avg. Peak Period**	\$1.69			\$2.18		
- Avg. Weekend	\$0.25			\$0.24		
- Avg. Off Peak	\$0.59			\$0.54		
- 85 <sup>th</sup> Percentile Weekday	\$2.00			\$2.00		
<b>Volume (veh)</b>	<b>EL</b>	<b>LL</b>		<b>EL</b>	<b>LL</b>	
- Avg. Weekday	30,175	109,861		29,850	97,993	
- Avg. Peak Period**	8,719	19,950		8,335	18,153	
<b>Speed (mph)</b>	<b>EL</b>	<b>LL</b>	<b>Δ</b>	<b>EL</b>	<b>LL</b>	<b>Δ</b>
- Avg. Overall	64	58	6	64	58	6
- Avg. Peak Period**	63	52	11	58	46	8
<b>Operated Above 45 MPH</b>	100.0%			98.9%		
<b>Remained Open to Motorists</b>	93.9%			95.6%		
<b>Closed due to Planned Construction</b>	4.2%			2.6%		
<b>Closed due to Non-recurring Events</b>	1.9%			1.8%		
<i>EL (Express Lanes); LL (Local Lanes)</i>						
<i>**Peak Period is defined as 6-9 AM (southbound) and 4-7 PM (northbound).</i>						



## Operations/Traffic Statistics - Speed Data

\*\* Peak Period is defined as 6-9 AM (southbound) and 4-7 PM (northbound).

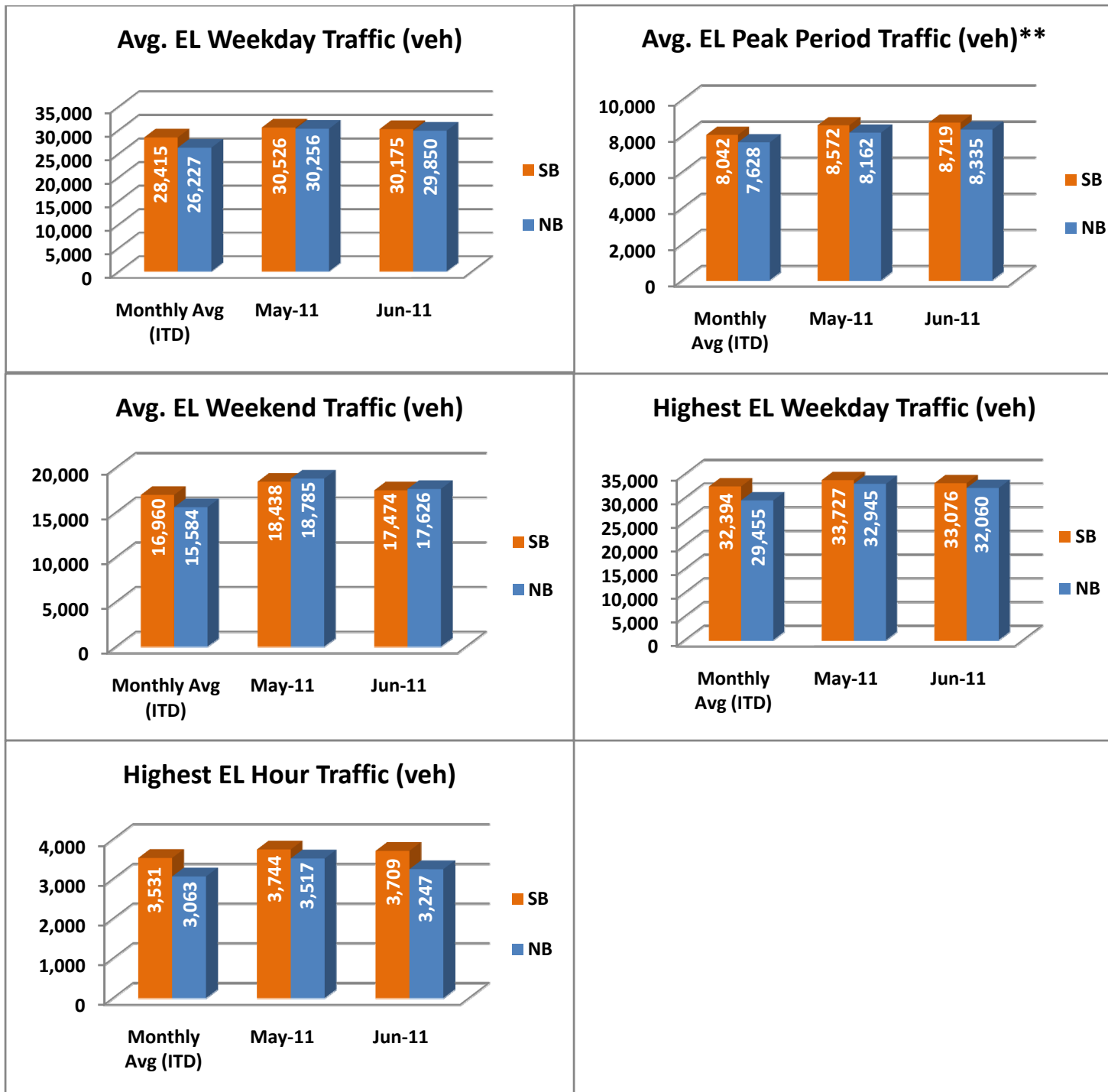


NOTE: ITD = Inception to Date



## Operations/Traffic Statistics - Volume Data

\*\* Peak Period is defined as 6-9 AM (southbound) and 4-7 PM (northbound).

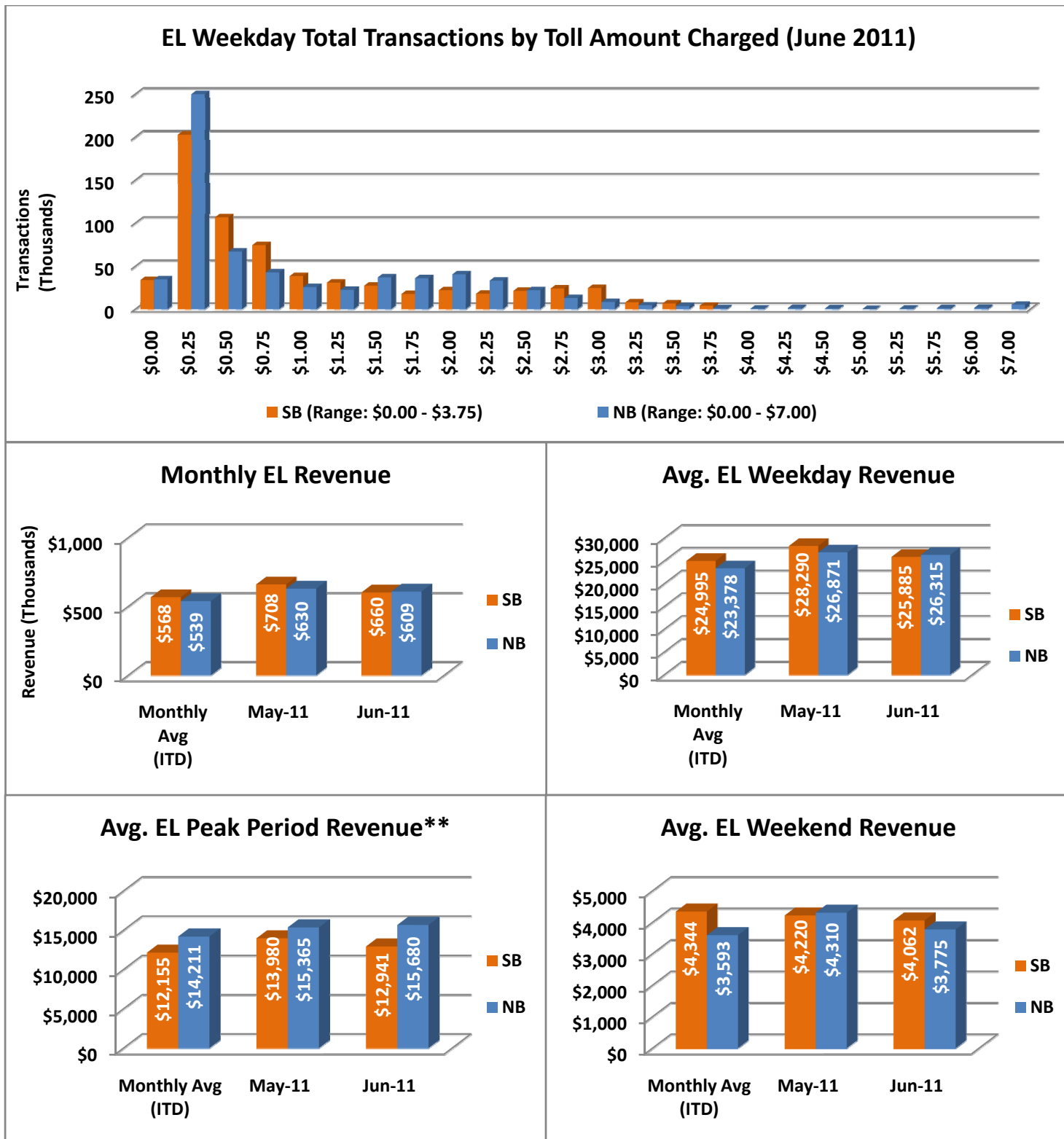


NOTE: ITD = Inception to Date



## Revenue/Tolls Statistics

\*\* Peak Period is defined as 6-9 AM (southbound) and 4-7 PM (northbound).

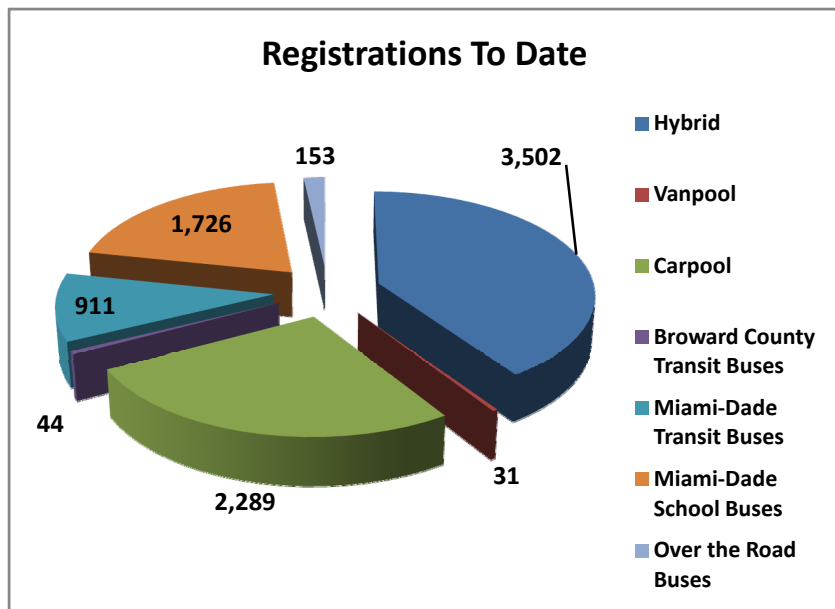


NOTE: ITD = Inception to Date

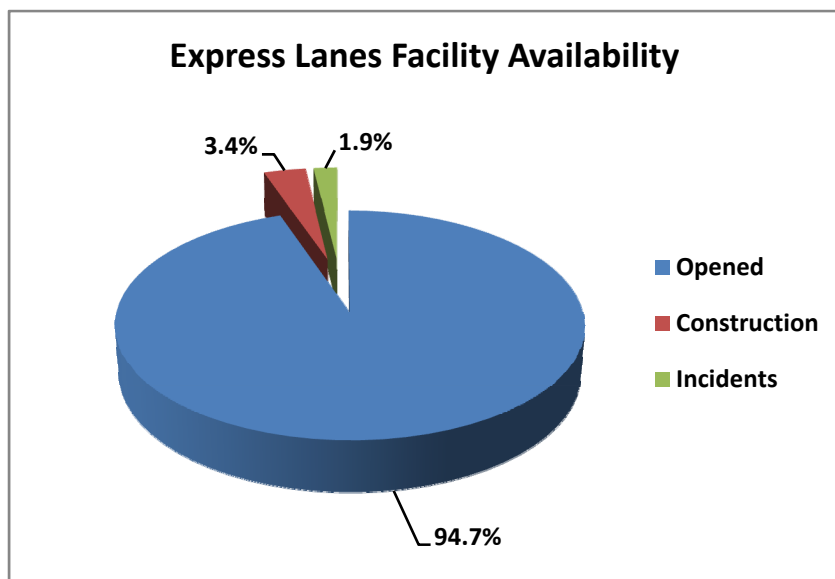


## Registrations—Toll Exempt Trips

The total registrations through June 2011 increased to 8,656. *Toll Exempt Trips is not being reported this month due to uncertainties with the transit data. This is currently being investigated and will be reinserted upon confirmation.*



## Facility Availability



The entire 95 Express Lanes (both directions) were open to motorists 94.7% of the time, while closed 3.4% due to planned construction and 1.9% due to non-recurring events.