



## Summary of Monthly Operations – July 2011 (rev. 2)

### General

In total, the 95 Express Lanes:

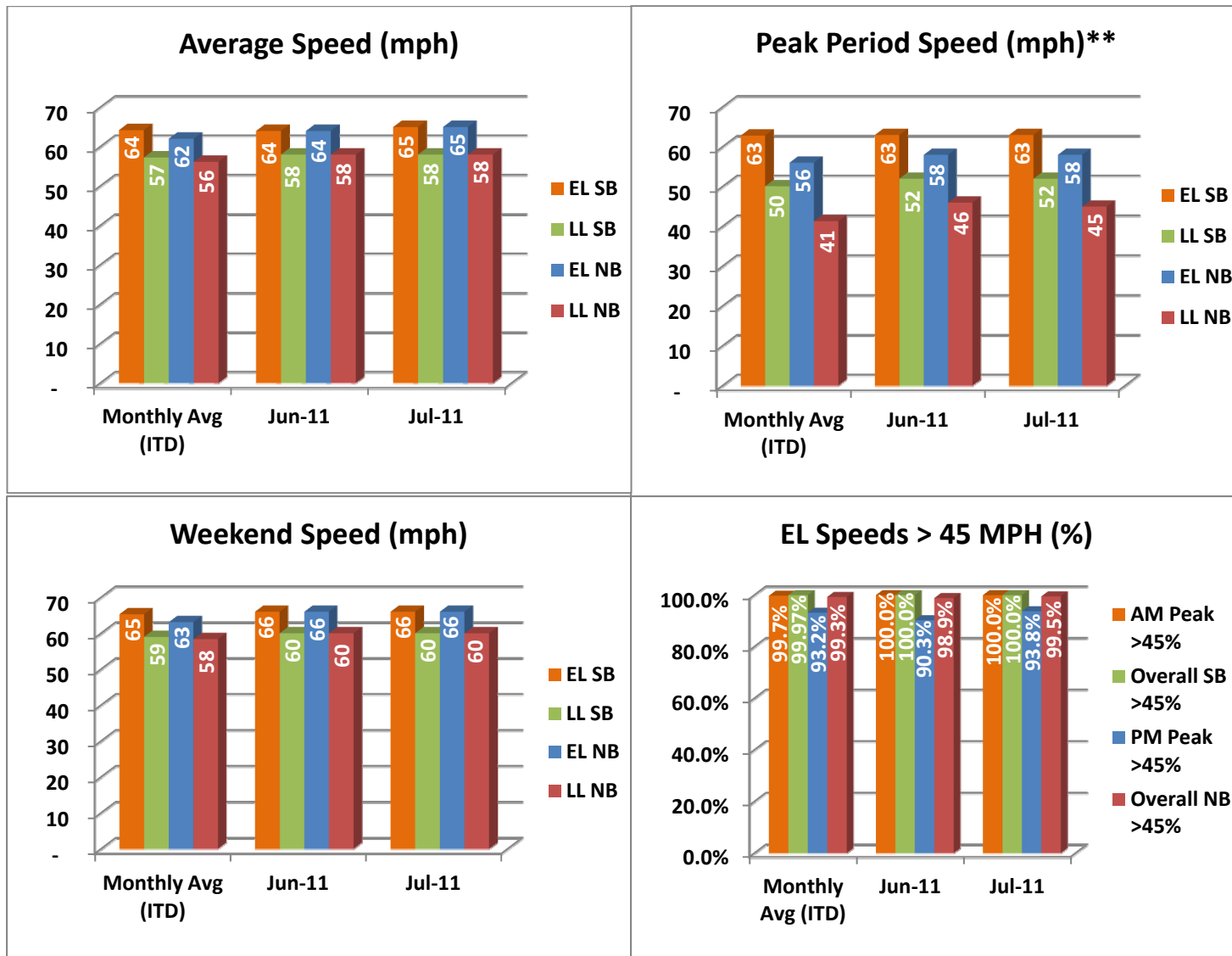
- ✓ Serviced 1,591,706 vehicle trips in July 2011 (11.7 million trips in 2011 to date), bringing the total since opening (December 5, 2008) to approximately 36.8 million trips.
- ✓ Had estimated monthly toll revenue of \$1.17 million in July 2011 (\$9.31 million in revenue in 2011 to date), bringing the total revenue to date to approximately \$28.1 million.
- ✓ Increased to a total of 8,691 registered vehicles, resulting in 27,515 toll exempt trips.

<u>July 2011 Statistics</u>	<u>Southbound</u>			<u>Northbound</u>		
<b>Total Trips</b>	801,240			790,466		
<b>Exempt Trips</b>	14,180			13,335		
<b>Revenue</b>						
	\$573,231			\$592,405		
<b>Tolls</b>						
- Range	\$0.00 - \$3.75			\$0.00 - \$5.50		
- Avg. Weekday	\$0.91			\$0.97		
- Avg. Peak Period**	\$1.69			\$2.11		
- Avg. Weekend	\$0.23			\$0.23		
- Avg. Off Peak	\$0.53			\$0.52		
- 85 <sup>th</sup> Percentile Weekday	\$2.00			\$2.00		
<b>Volume (veh)</b>						
	<b>EL</b>	<b>LL</b>		<b>EL</b>	<b>LL</b>	
- Avg. Weekday	29,890	108,454		29,235	90,951	
- Avg. Peak Period**	8,134	19,305		7,949	17,215	
<b>Speed (mph)</b>						
	<b>EL</b>	<b>LL</b>	<b>Δ</b>	<b>EL</b>	<b>LL</b>	<b>Δ</b>
- Avg. Overall	65	58	7	65	58	7
- Avg. Peak Period**	63	52	11	58	45	13
<b>Operated Above 45 MPH</b>						
	100.0%			99.5%		
<b>Remained Open to Motorists</b>						
	95.5%			94.1%		
<b>Closed due to Planned Construction</b>						
	2.6%			3.1%		
<b>Closed due to Non-recurring Events</b>						
	2.0%			2.8%		
<i>EL (Express Lanes); LL (Local Lanes)</i>						
<i>**Peak Period is defined as 6-9 AM (southbound) and 4-7 PM (northbound).</i>						



## Operations/Traffic Statistics - Speed Data

\*\* Peak Period is defined as 6-9 AM (southbound) and 4-7 PM (northbound).

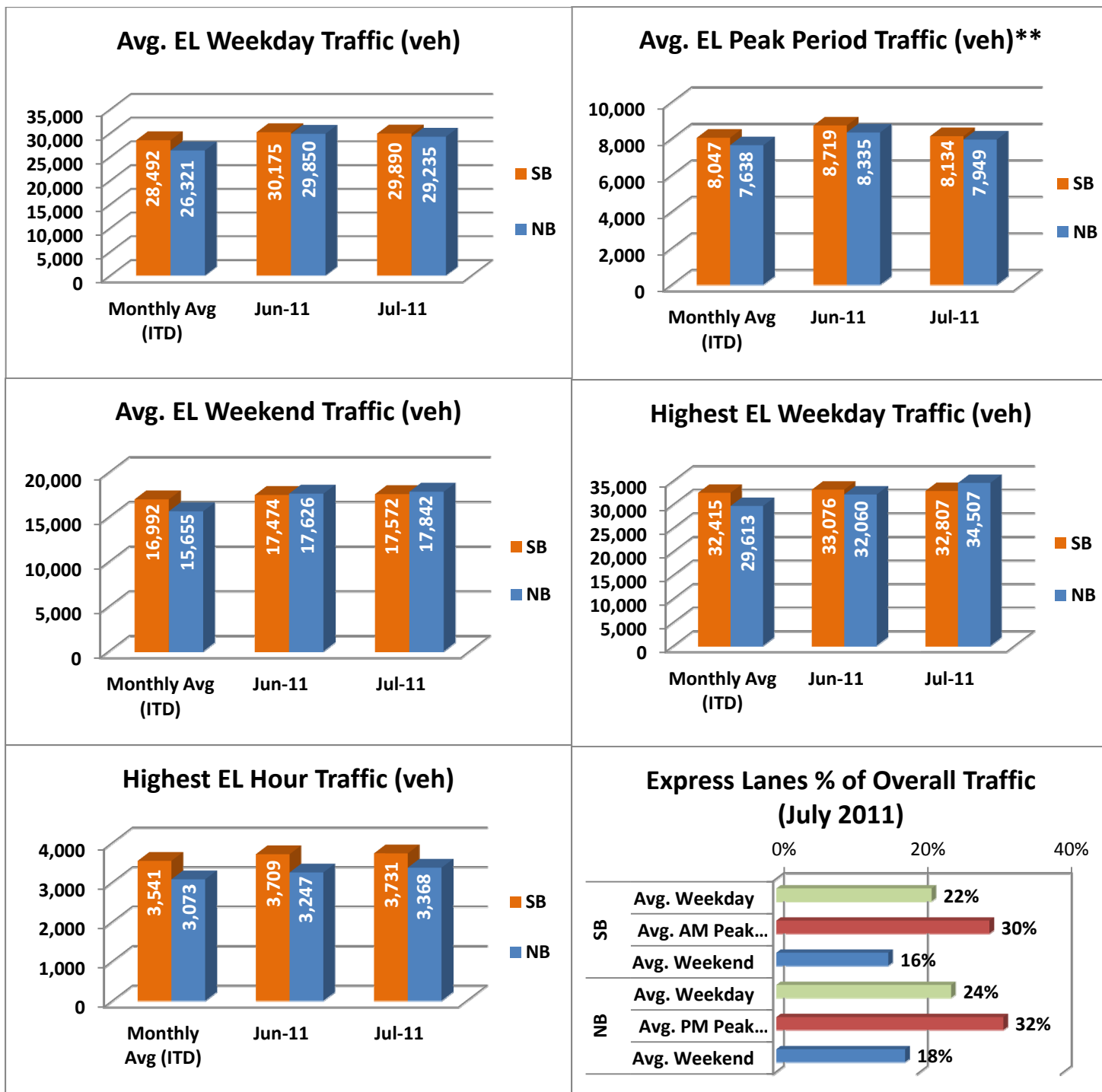


NOTE: ITD = Inception to Date



## Operations/Traffic Statistics - Volume Data

\*\* Peak Period is defined as 6-9 AM (southbound) and 4-7 PM (northbound).

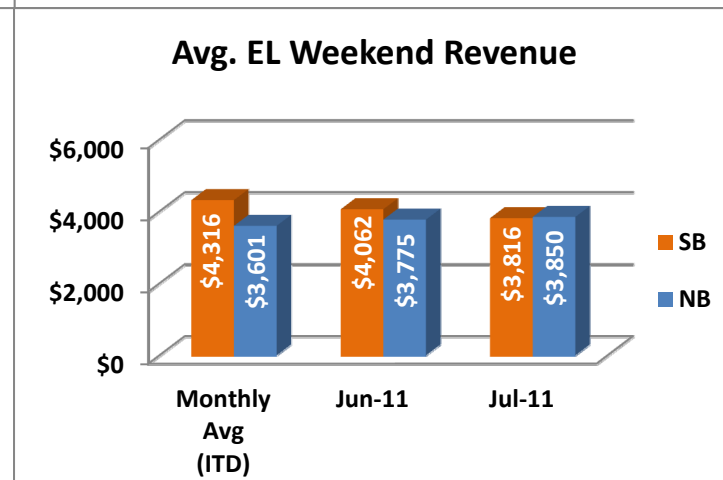
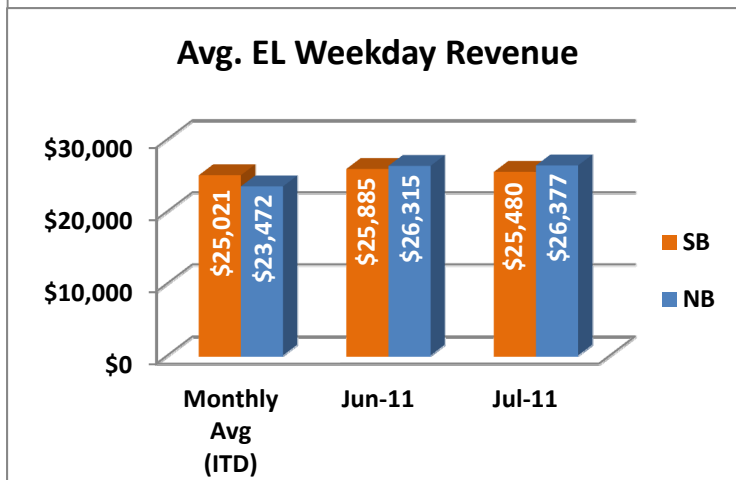
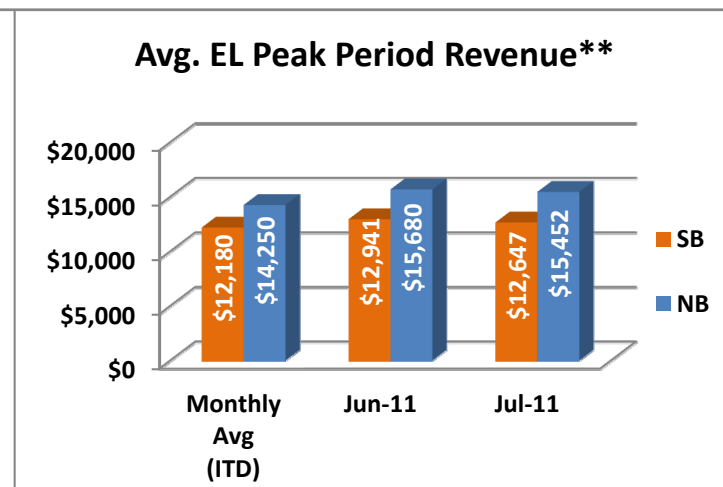
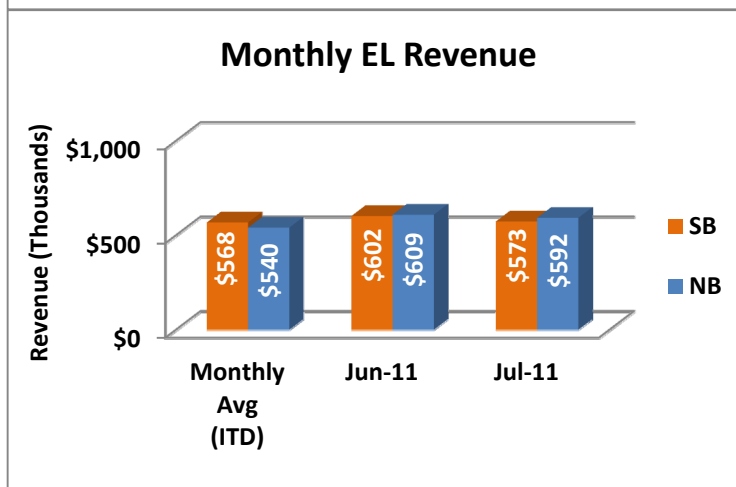
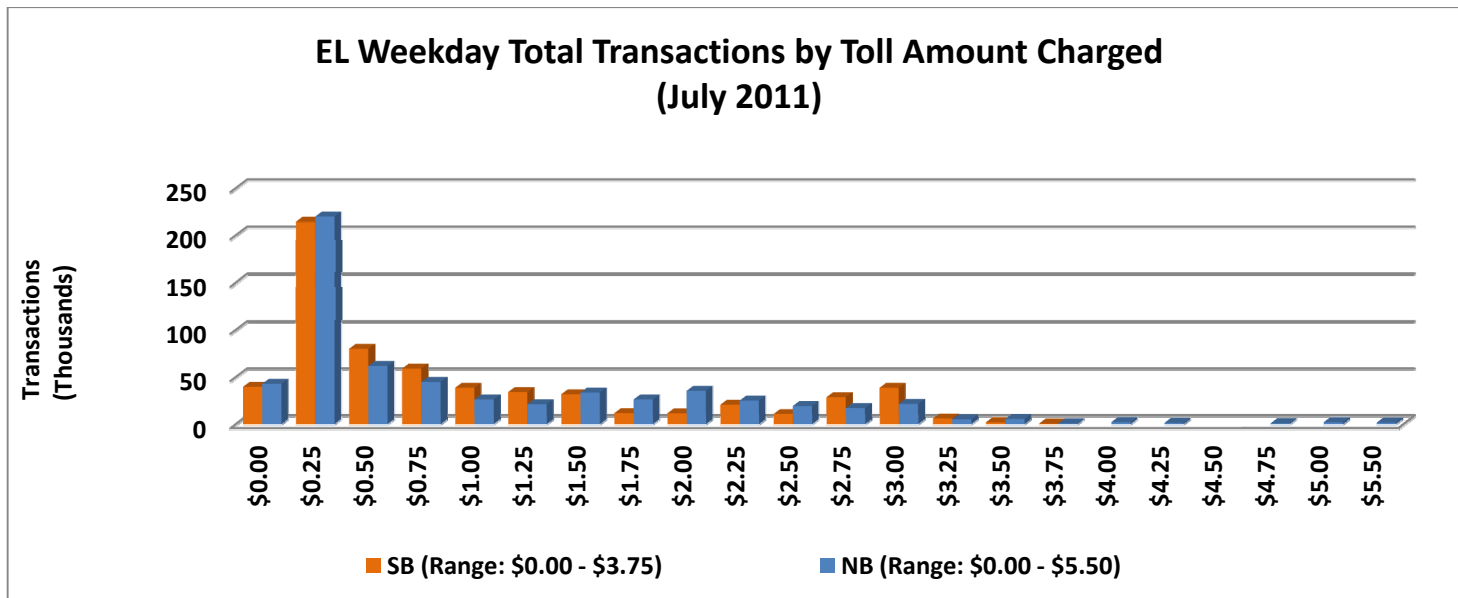


NOTE: ITD = Inception to Date



## Revenue/Tolls Statistics

\*\* Peak Period is defined as 6-9 AM (southbound) and 4-7 PM (northbound).

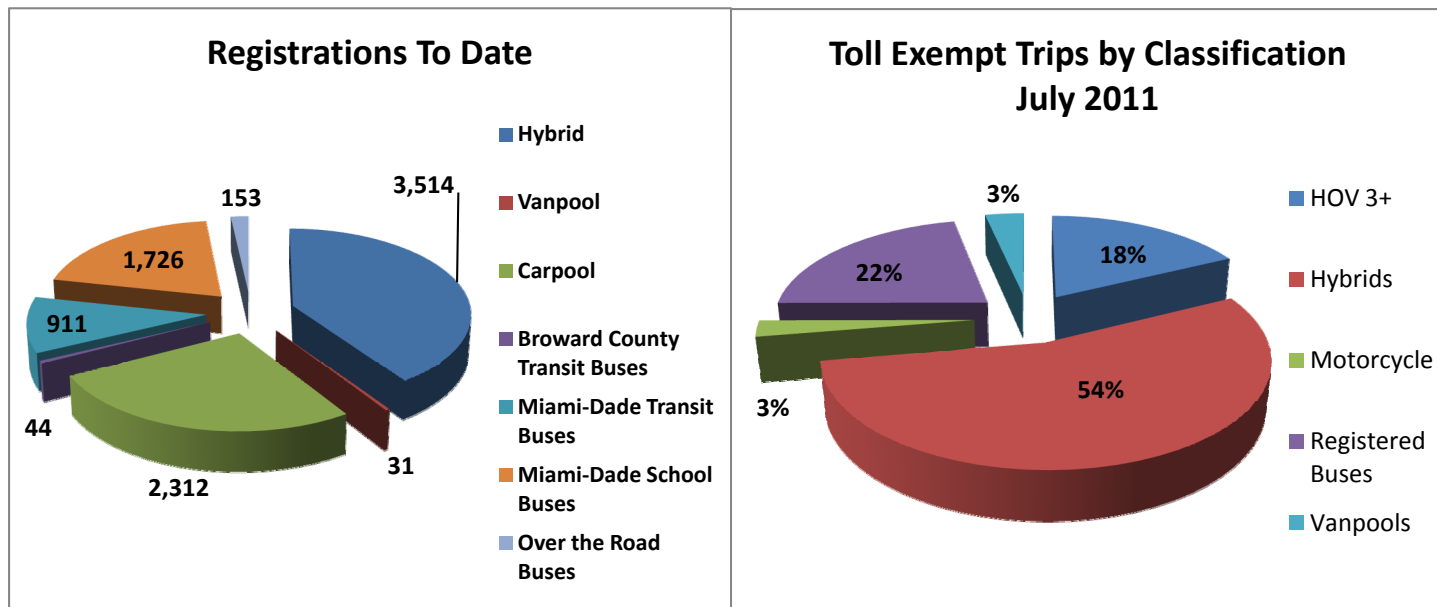


NOTE: ITD = Inception to Date

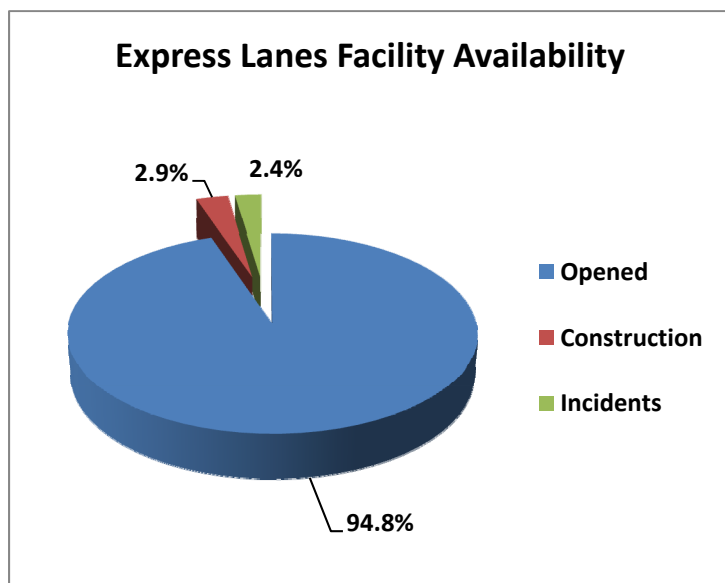


## Registrations—Toll Exempt Trips

The total registrations through July 2011 increased to 8,691. The 27,515 Toll Exempt Trips for this month are shown by classification below.



## Facility Availability



The entire 95 Express lanes (both directions) were open to motorists 94.8% of the time, while closed 2.9% due to 8 planned construction/maintenance events (each lasting 5 hours, 32 minutes in duration on average) and 2.4% due to 164 non-recurring events (each lasting 13 minutes in duration on average).