



Summary of Monthly Operations – September 2011

General

In total, the 95 Express Lanes:

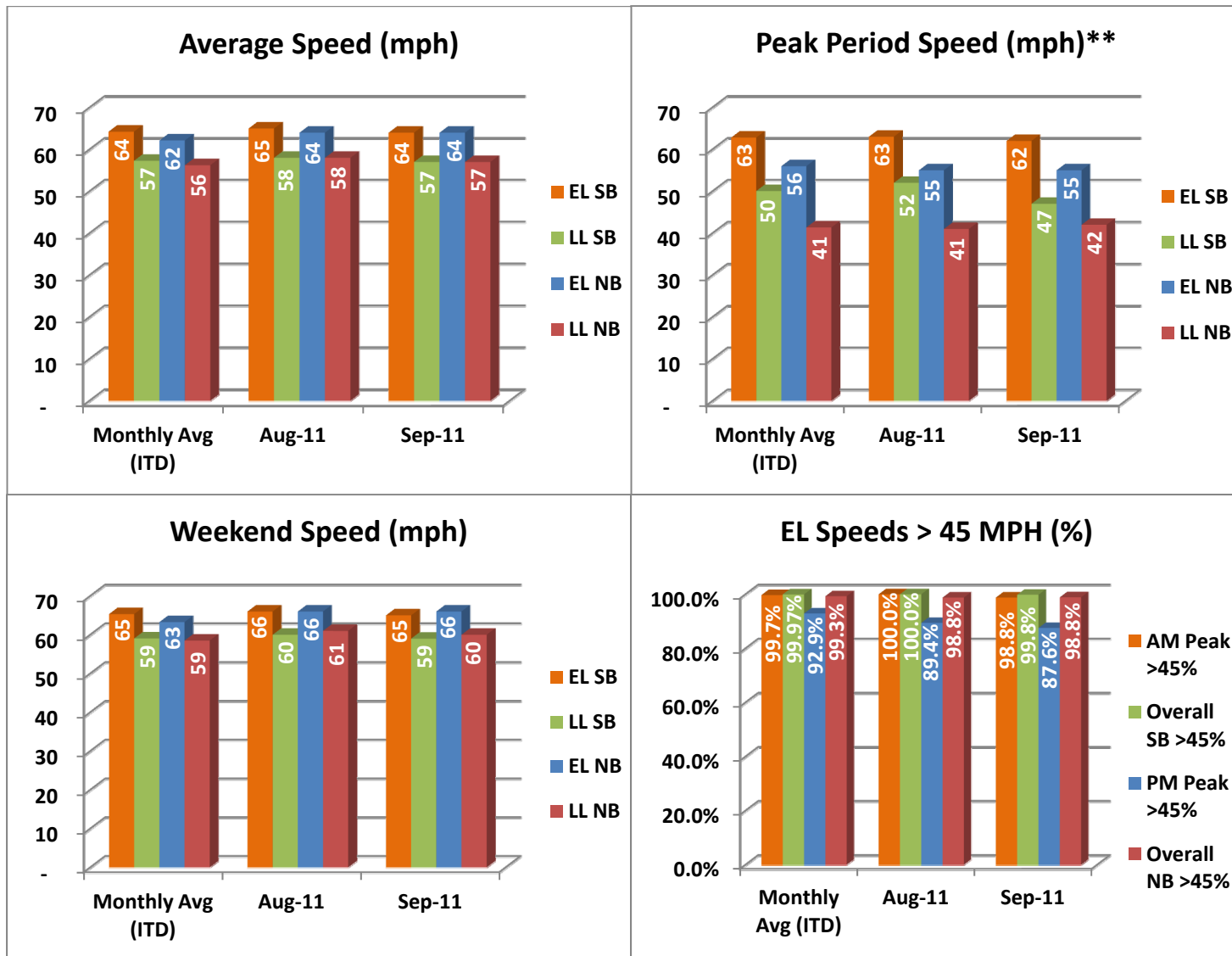
- ✓ Serviced 1,599,096 vehicle trips in September 2011 (14.9 million trips in 2011 to date), bringing the total since opening (December 5, 2008) to approximately 40.1 million trips.
- ✓ Had estimated monthly toll revenue of \$1.33 million in September 2011 (\$12.0 million in revenue in 2011 to date), bringing the total revenue to date to approximately \$30.7 million.
- ✓ Decreased to a total of 8,606 registered vehicles, resulting in 28,892 toll exempt trips.

<u>September 2011 Statistics</u>	<u>Southbound</u>		<u>Northbound</u>			
Total Trips	807,469		791,627			
Exempt Trips	14,731		14,161			
Revenue						
	\$654,358		\$672,518			
Tolls						
- Range	\$0.00 - \$4.25		\$0.00 - \$7.00			
- Avg. Weekday	\$1.03		\$1.07			
- Avg. Peak Period**	\$1.80		\$2.26			
- Avg. Weekend	\$0.24		\$0.29			
- Avg. Off Peak	\$0.62		\$0.58			
- 85 th Percentile Weekday	\$2.50		\$2.25			
Volume (veh)						
	EL	LL	EL	LL		
- Avg. Weekday	30,311	106,698	29,949	91,673		
- Avg. Peak Period**	8,815	19,441	8,324	17,077		
Speed (mph)						
	EL	LL	Δ	EL	LL	Δ
- Avg. Overall	64	57	7	64	57	7
- Avg. Peak Period**	62	47	15	55	42	13
Operated Above 45 MPH						
	99.8%		98.9%			
Remained Open to Motorists						
	94.3%		93.7%			
Closed due to Planned Construction						
	4.0%		4.2%			
Closed due to Non-recurring Events						
	1.7%		2.2%			
EL (Express Lanes); LL (Local Lanes)						
**Peak Period is defined as 6-9 AM (southbound) and 4-7 PM (northbound).						



Operations/Traffic Statistics - Speed Data

** Peak Period is defined as 6-9 AM (southbound) and 4-7 PM (northbound).

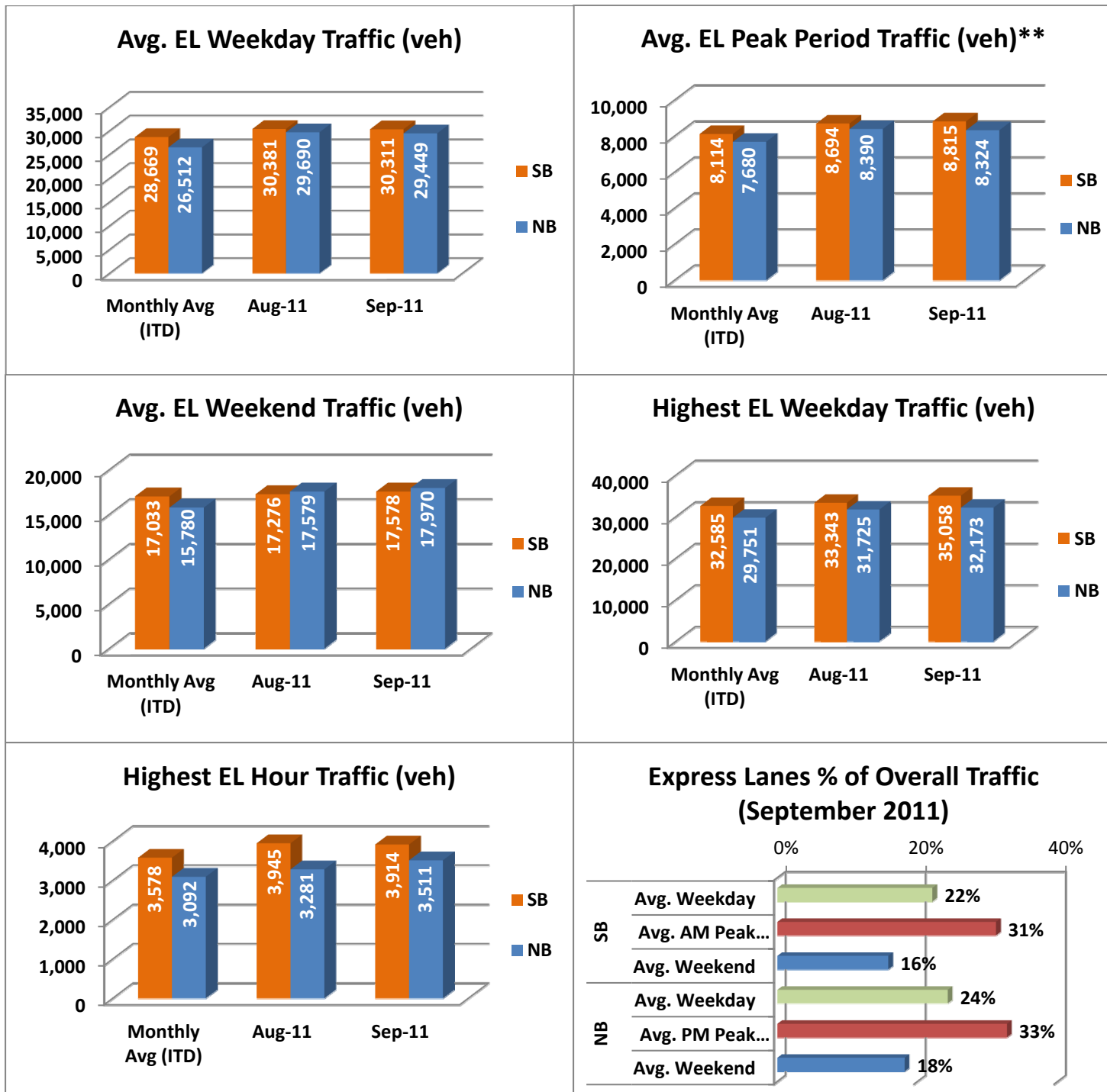


NOTE: ITD = Inception to Date



Operations/Traffic Statistics - Volume Data

** Peak Period is defined as 6-9 AM (southbound) and 4-7 PM (northbound).

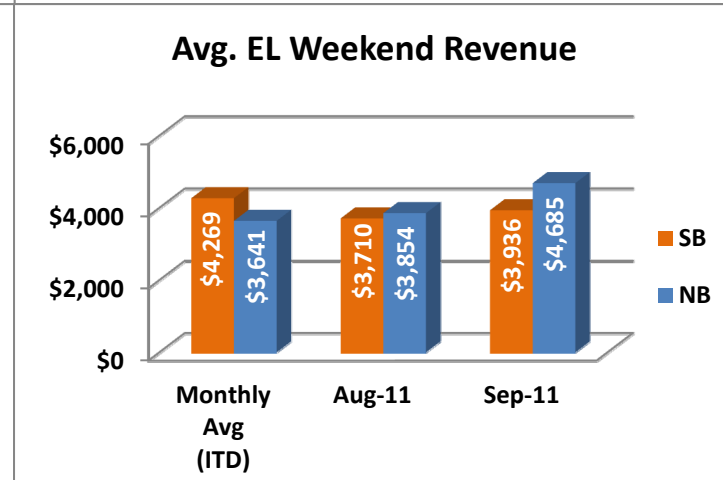
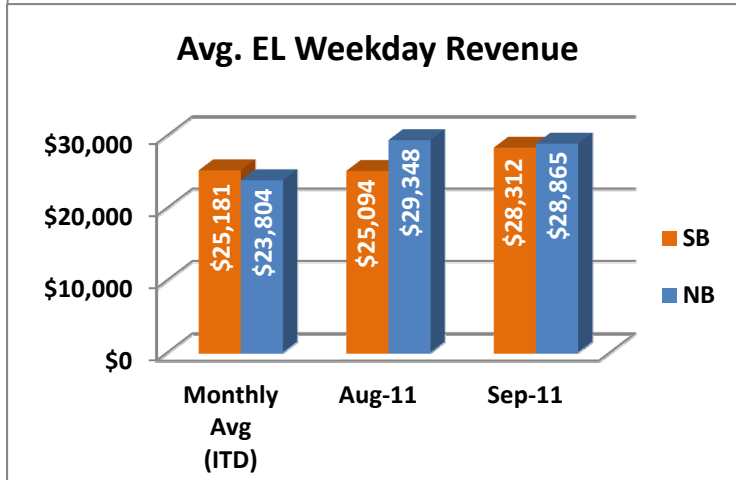
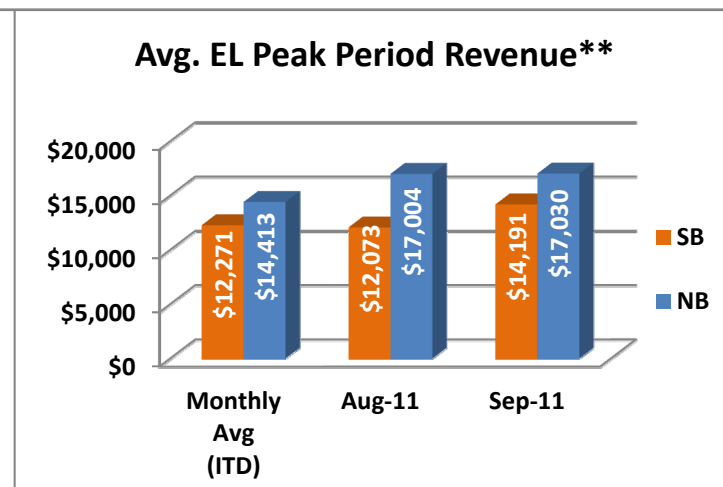
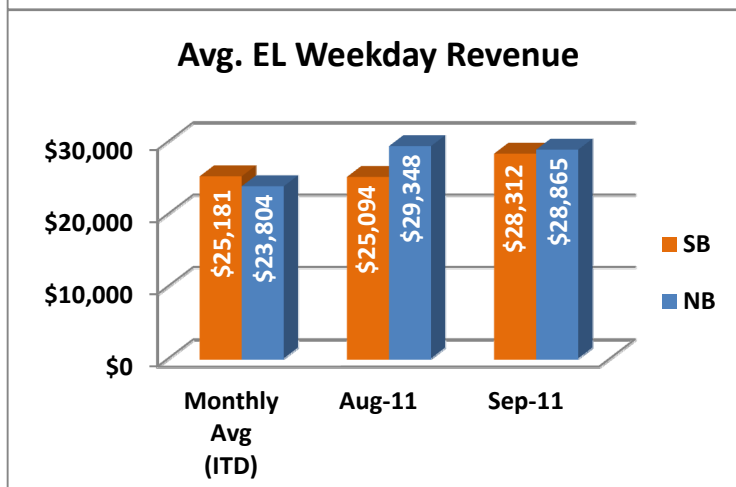
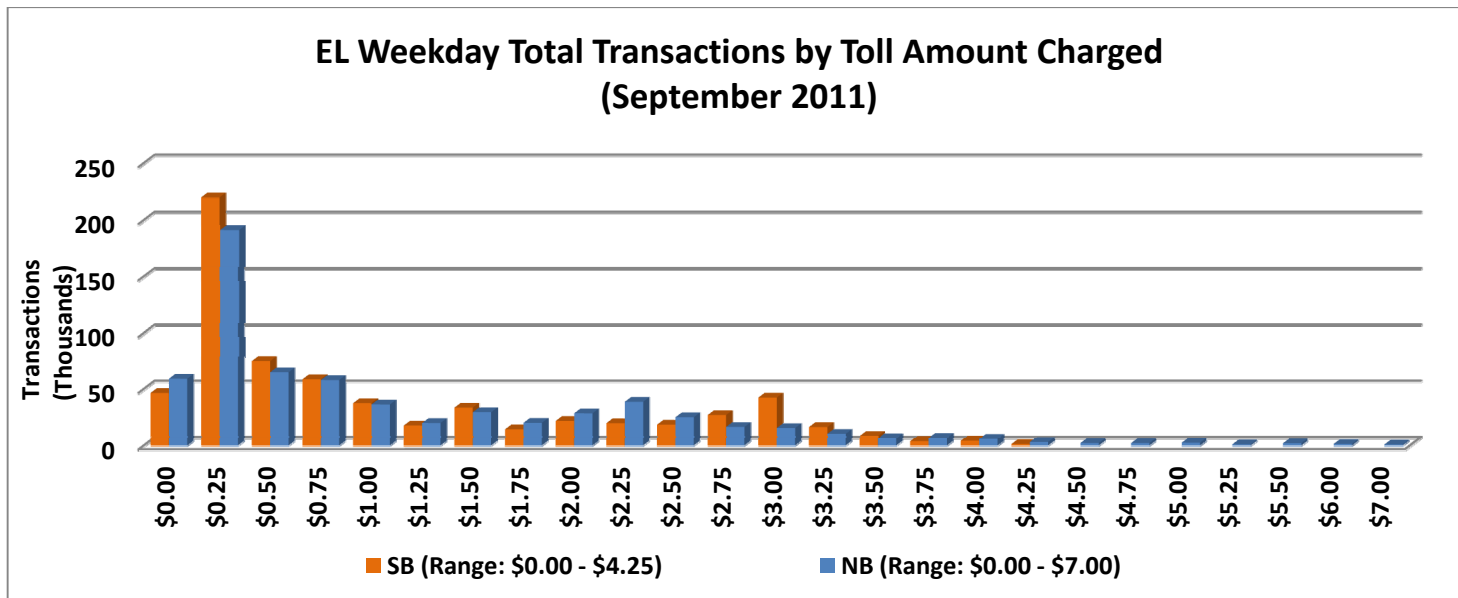


NOTE: ITD = Inception to Date



Revenue/Tolls Statistics

** Peak Period is defined as 6-9 AM (southbound) and 4-7 PM (northbound).

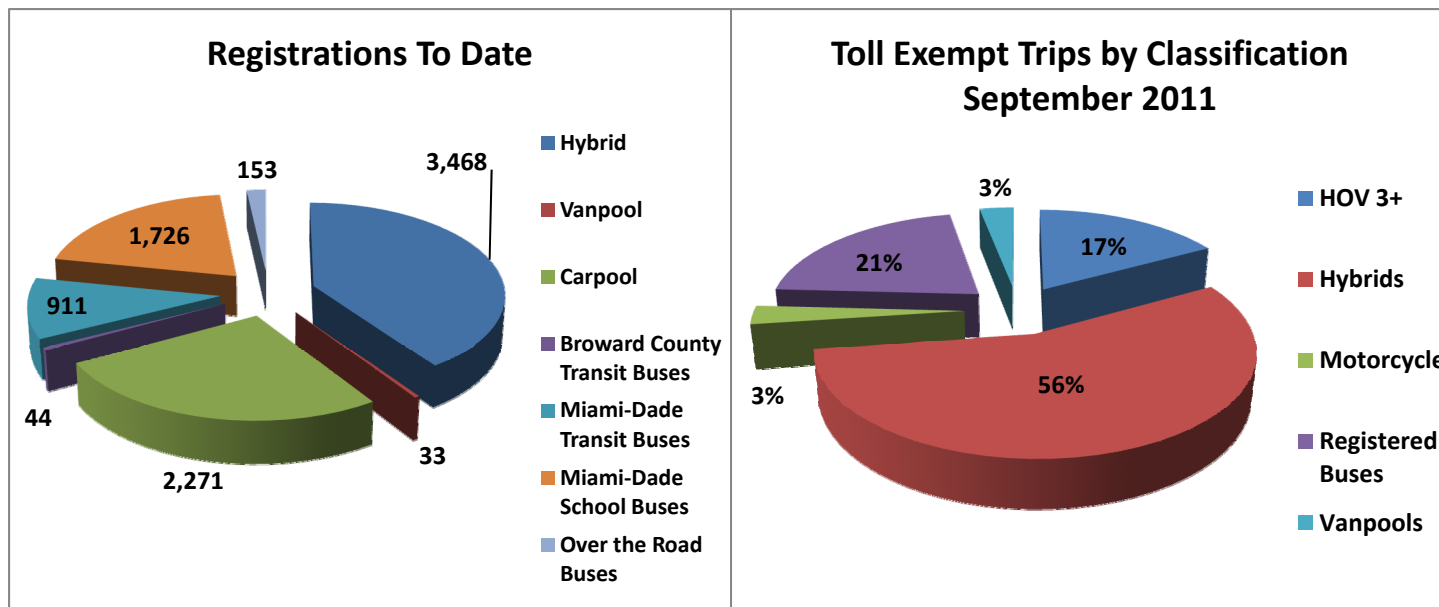


NOTE: ITD = Inception to Date

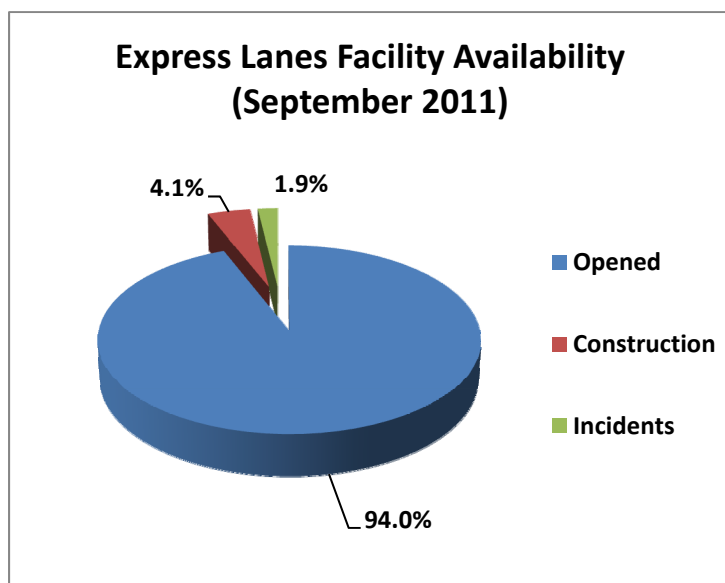


Registrations—Toll Exempt Trips

The total registrations through September 2011 decreased to 8,606. The 28,892 Toll Exempt Trips for this month are shown by classification below.



Facility Availability



The entire 95 Express lanes (both directions) were open to motorists 94.0% of the time, while closed 4.1% due to 10 planned construction/maintenance events (each lasting under 4 hours in duration on average) and 1.9% due to 138 non-recurring events (each lasting 12 minutes in duration on average).