



## Summary of Monthly Operations – January 2012

### General

In total, the 95 Express Lanes:

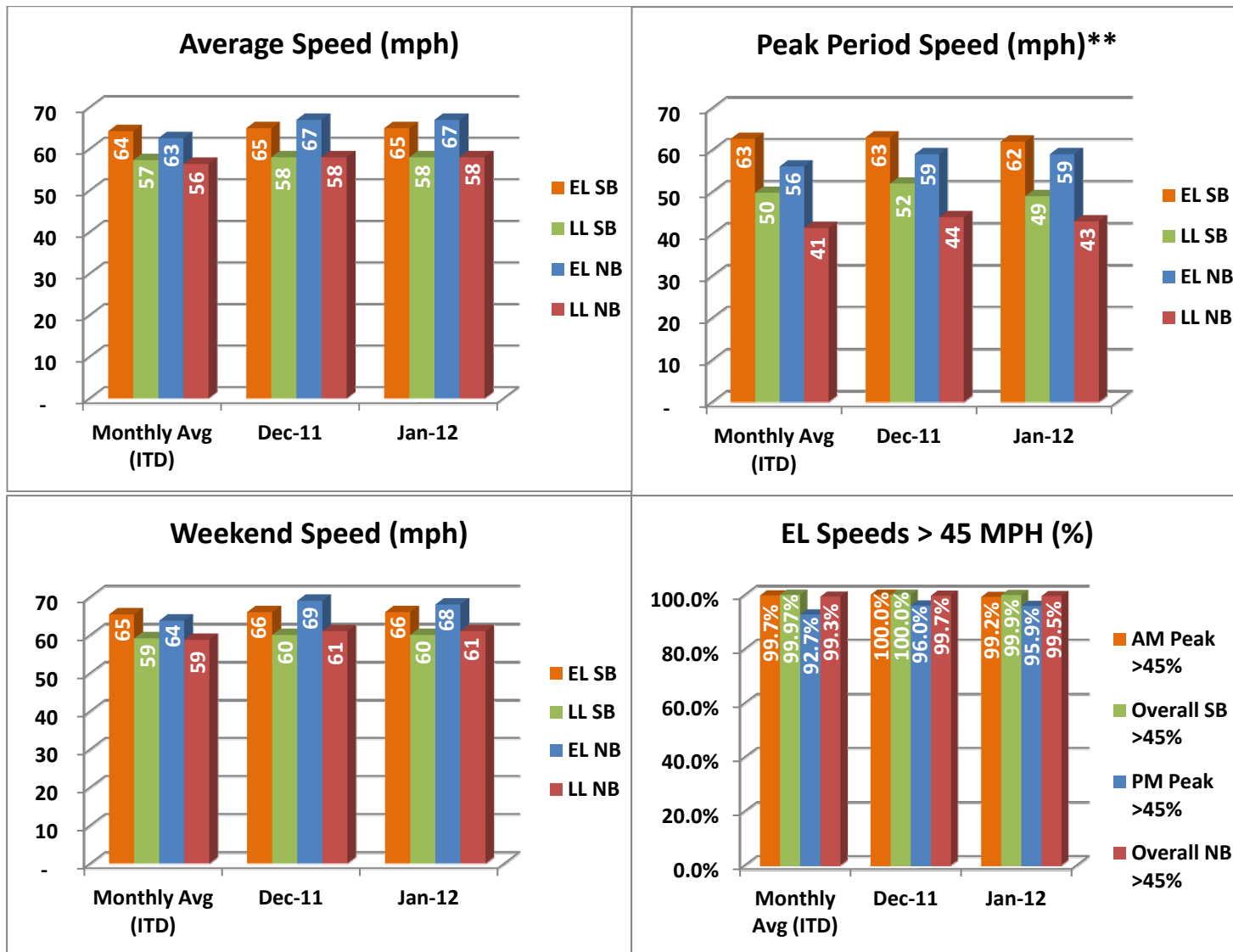
- ✓ Serviced 1,741,396 vehicle trips in January 2012, bringing the total since opening (December 5, 2008) to approximately 46.8 million trips.
- ✓ Had estimated monthly toll revenue of \$1.41 million in January 2012, bringing the total revenue to date to approximately \$35.98 million.
- ✓ Increased to a total of 8,709 registered vehicles, resulting in 29,747 toll exempt trips.

<u>January 2012 Statistics</u>	<u>Southbound</u>			<u>Northbound</u>		
<b>Total Trips</b>	874,662			866,644		
<b>Exempt Trips</b>	15,310			14,437		
<b>Revenue</b>						
	\$722,861			\$691,734		
<b>Tolls</b>						
- Range	\$0.00 - \$6.00			\$0.00 - \$6.50		
- Avg. Weekday	\$1.10			\$1.09		
- Avg. Peak Period**	\$1.81			\$2.39		
- Avg. Weekend	\$0.31			\$0.24		
- Avg. Off Peak	\$0.82			\$0.58		
- 85 <sup>th</sup> Percentile Weekday	\$2.25			\$2.50		
<b>Volume (veh)</b>						
	<b>EL</b>	<b>LL</b>		<b>EL</b>	<b>LL</b>	
- Avg. Weekday	31,622	108,660		31,106	96,291	
- Avg. Peak Period**	8,819	19,099		8,827	17,949	
<b>Speed (mph)</b>						
	<b>EL</b>	<b>LL</b>	<b>Δ</b>	<b>EL</b>	<b>LL</b>	<b>Δ</b>
- Avg. Overall	65	58	7	67	58	9
- Avg. Peak Period**	62	49	13	59	43	16
<b>Operated Above 45 MPH</b>						
	99.9%			99.5%		
<b>Remained Open to Motorists</b>						
	94.5%			94.8%		
<b>Closed due to Planned Construction</b>						
	2.6%			3.1%		
<b>Closed due to Non-recurring Events</b>						
	2.9%			2.1%		
<i>EL (Express Lanes); LL (Local Lanes)</i>						
<i>**Peak Period is defined as 6-9 AM (southbound) and 4-7 PM (northbound).</i>						



## Operations/Traffic Statistics - Speed Data

\*\* Peak Period is defined as 6-9 AM (southbound) and 4-7 PM (northbound).

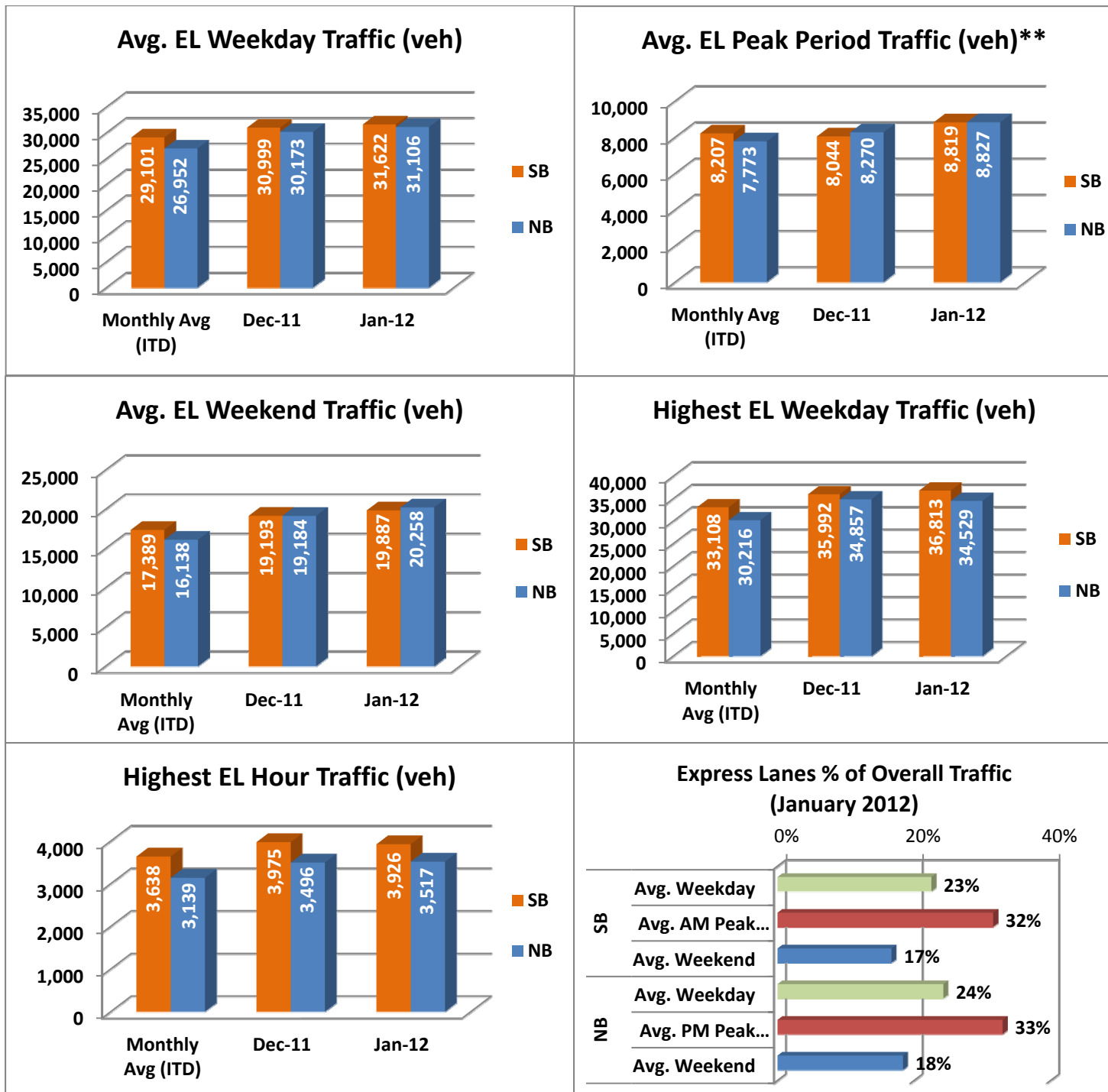


NOTE: ITD = Inception to Date



## Operations/Traffic Statistics - Volume Data

\*\* Peak Period is defined as 6-9 AM (southbound) and 4-7 PM (northbound).

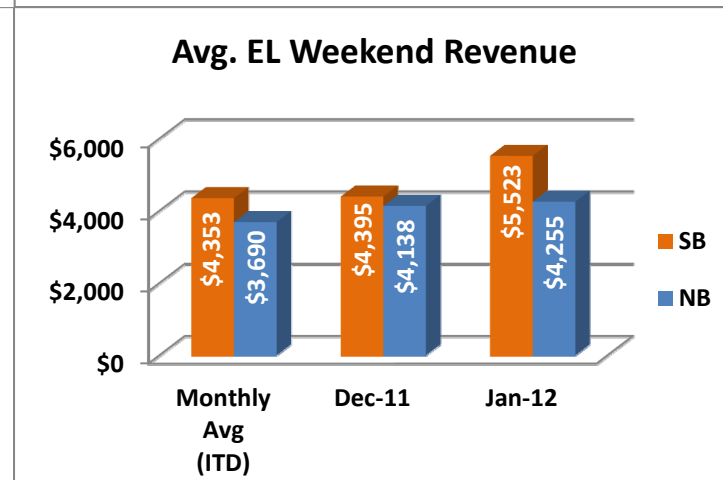
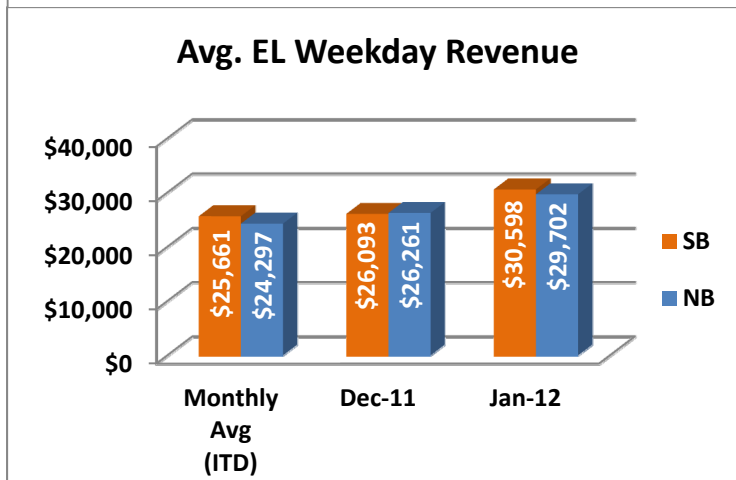
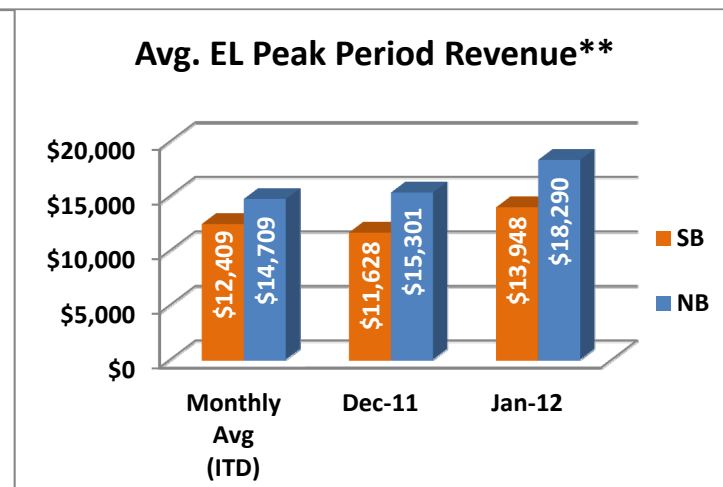
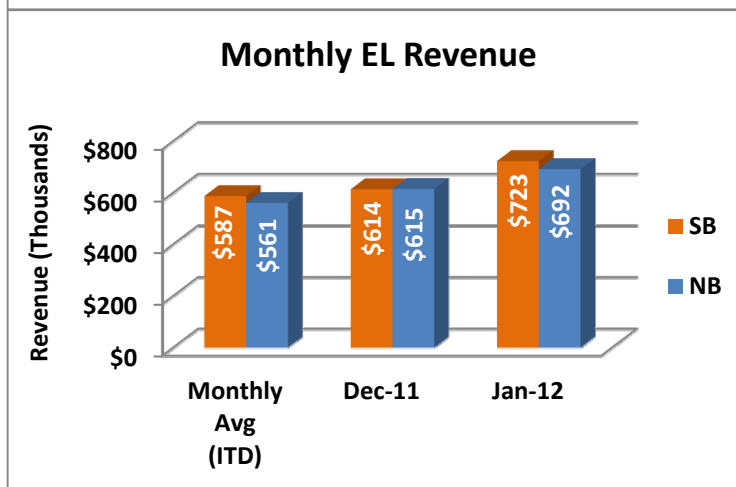
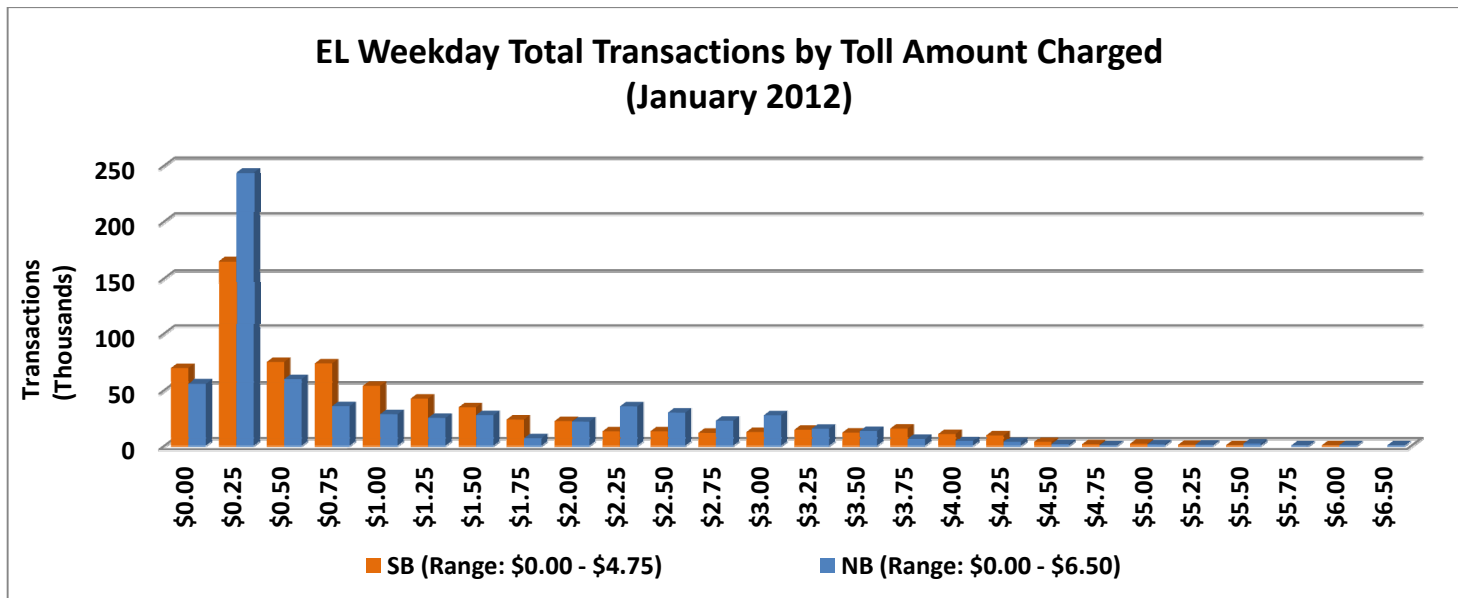


NOTE: ITD = Inception to Date



## Revenue/Tolls Statistics

\*\* Peak Period is defined as 6-9 AM (southbound) and 4-7 PM (northbound).

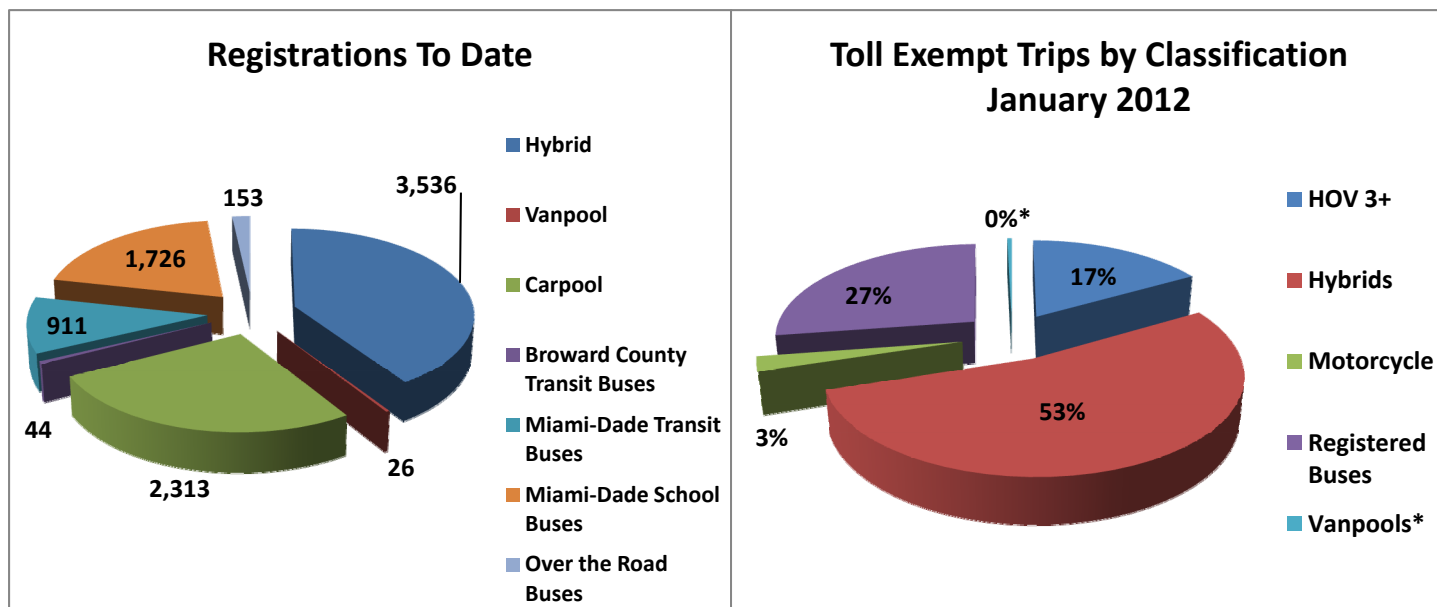


NOTE: ITD = Inception to Date



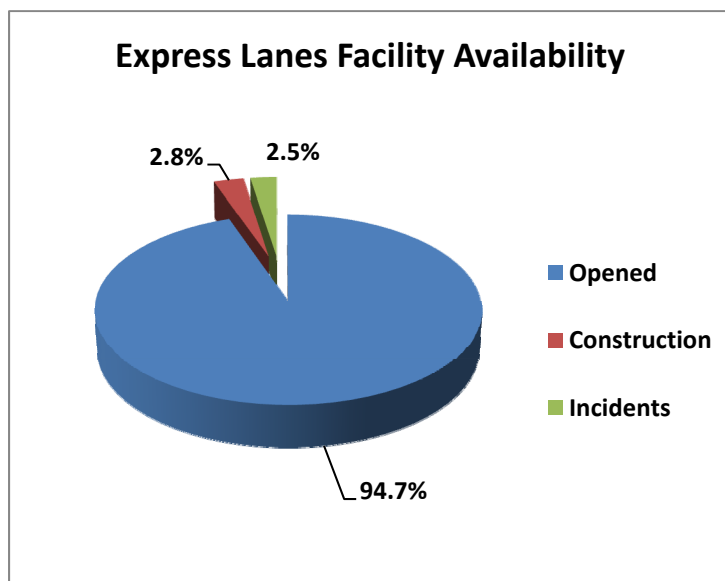
## Registrations—Toll Exempt Trips

The total registrations through January 2012 increased to 8,709. The 29,747 Toll Exempt Trips for this month are shown by classification below.



\*Note: a portion of the Vanpool data is included within Registered Buses.

## Facility Availability



The entire 95 Express lanes (both directions) were open to motorists 94.7% of the time, while closed 2.8% due to 8 planned construction/maintenance events (each lasting 5 hours, 15 minutes in duration on average) and 2.5% due to 147 non-recurring events (each lasting approximately 15 minutes in duration on average).