



Summary of Monthly Operations – December 2011

General

In total, the 95 Express Lanes:

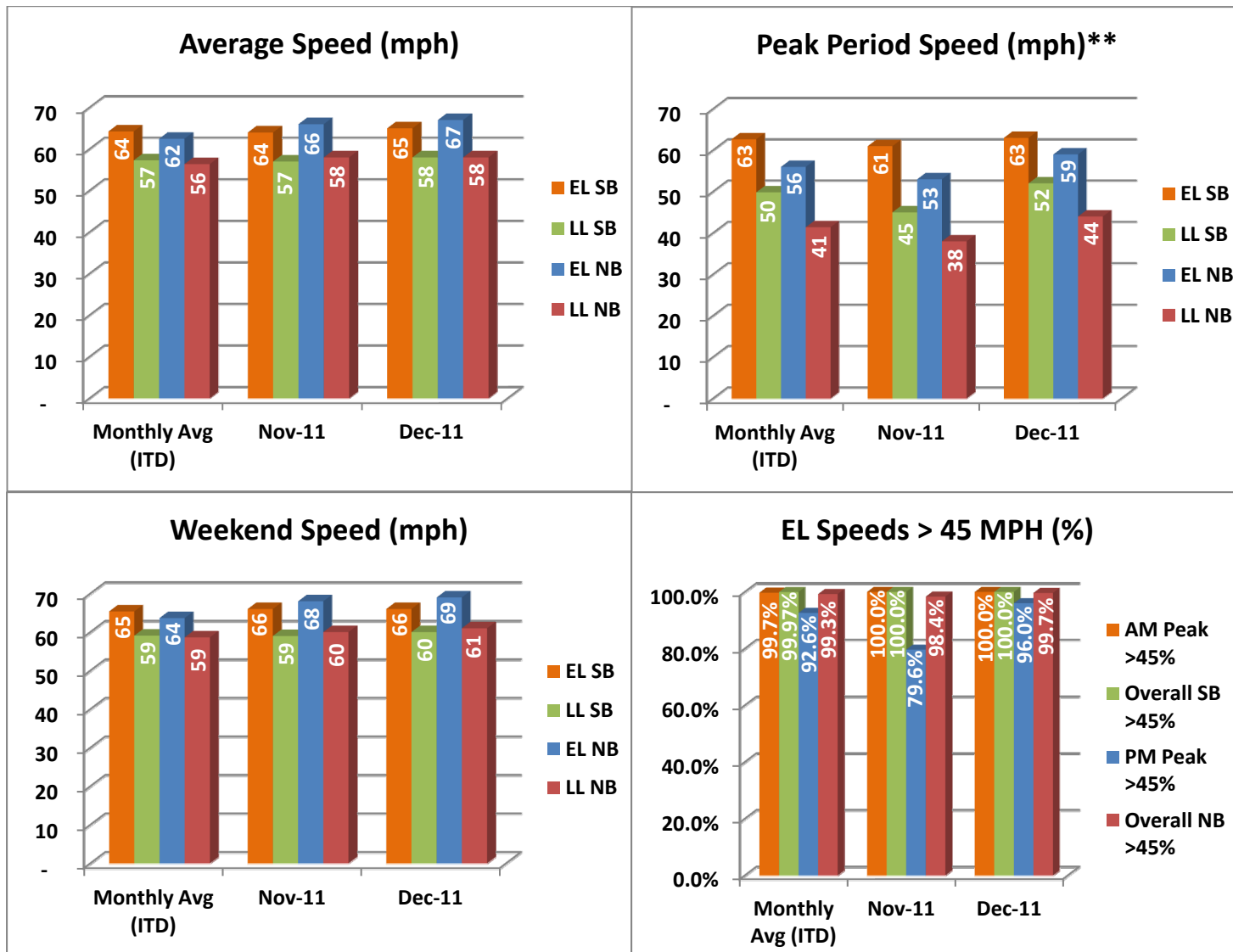
- ✓ Serviced 1,691,163 vehicle trips in December 2011 (19.96 million trips in 2011 to date), bringing the total since opening (December 5, 2008) to approximately 45.1 million trips.
- ✓ Had estimated monthly toll revenue of \$1.23 million in December 2011 (\$5.8 million in revenue in 2011 to date), bringing the total revenue to date to approximately \$34.6 million.
- ✓ Decreased to a total of 8,633 registered vehicles, resulting in 29,767 toll exempt trips.

<u>December 2011 Statistics</u>	<u>Southbound</u>		<u>Northbound</u>			
Total Trips	854,710		836,453			
Exempt Trips	15,613		14,154			
Revenue						
	\$613,599		\$614,986			
Tolls						
- Range	\$0.00 - \$4.75		\$0.00 - \$5.75			
- Avg. Weekday	\$0.94		\$0.97			
- Avg. Peak Period**	\$1.63		\$2.09			
- Avg. Weekend	\$0.25		\$0.24			
- Avg. Off Peak	\$0.69		\$0.55			
- 85 th Percentile Weekday	\$1.75		\$2.00			
Volume (veh)						
	EL	LL	EL	LL		
- Avg. Weekday	30,999	107,350	30,173	95,351		
- Avg. Peak Period**	8,044	18,201	8,270	17,561		
Speed (mph)						
	EL	LL	Δ	EL	LL	Δ
- Avg. Overall	65	58	7	67	58	9
- Avg. Peak Period**	63	52	11	59	44	15
Operated Above 45 MPH						
	100.0%		99.7%			
Remained Open to Motorists						
	95.0%		94.9%			
Closed due to Planned Construction						
	3.1%		3.3%			
Closed due to Non-recurring Events						
	1.8%		1.8%			
<i>EL (Express Lanes); LL (Local Lanes)</i>						
<i>**Peak Period is defined as 6-9 AM (southbound) and 4-7 PM (northbound).</i>						



Operations/Traffic Statistics - Speed Data

** Peak Period is defined as 6-9 AM (southbound) and 4-7 PM (northbound).

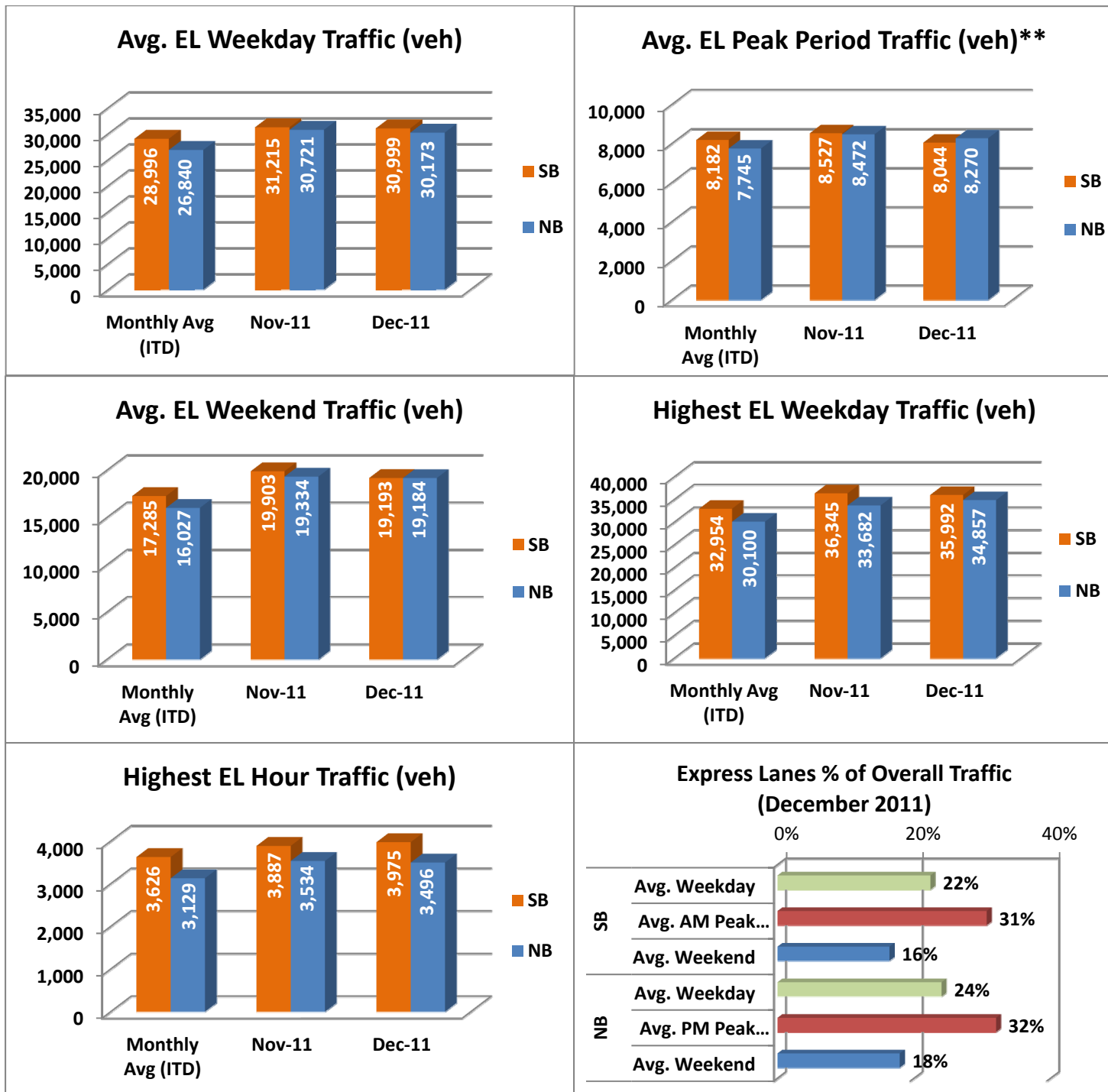


NOTE: ITD = Inception to Date



Operations/Traffic Statistics - Volume Data

** Peak Period is defined as 6-9 AM (southbound) and 4-7 PM (northbound).

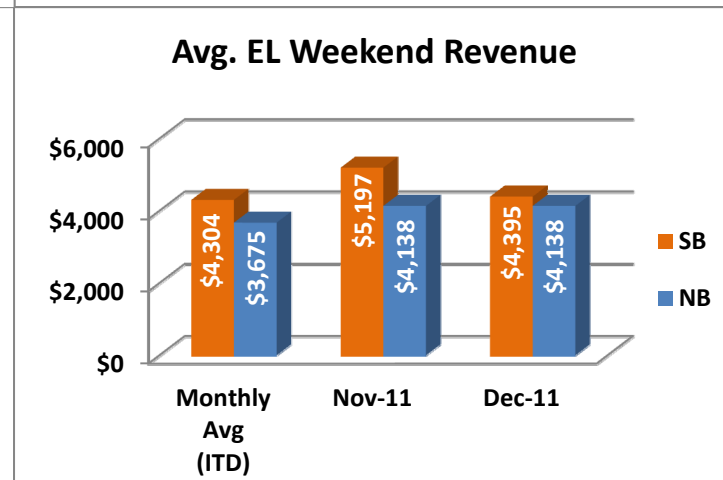
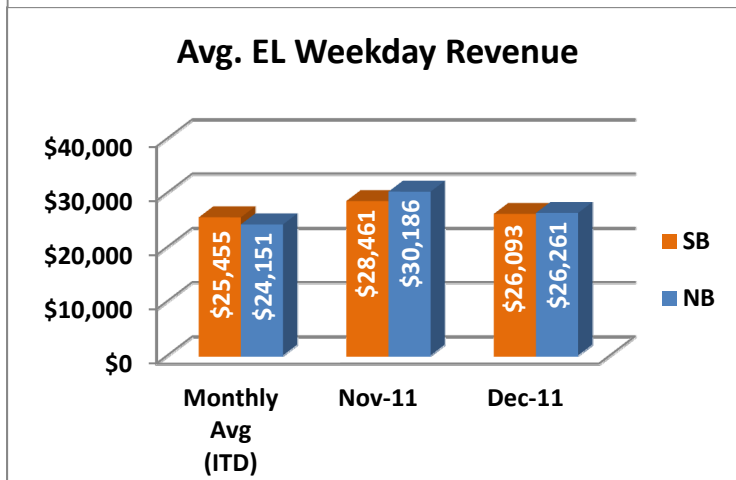
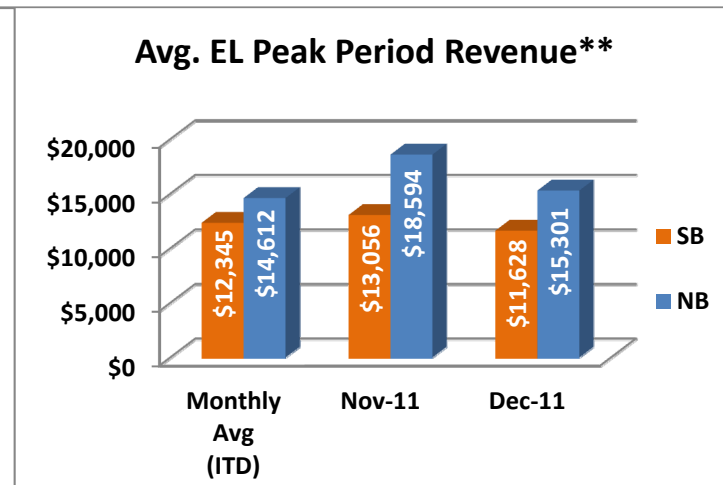
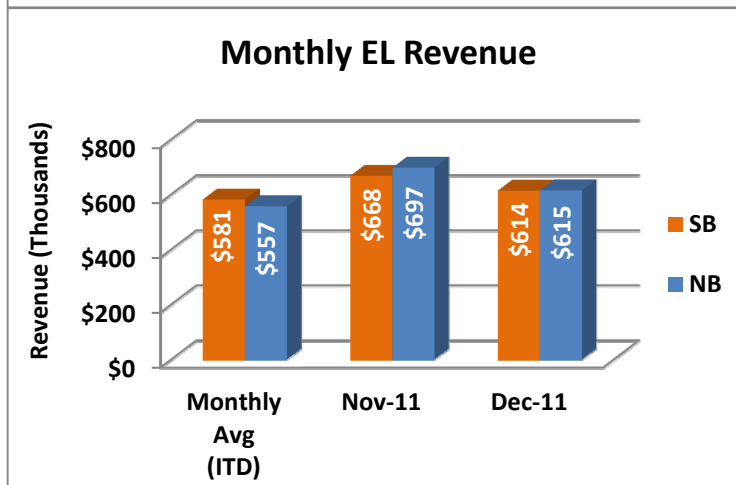
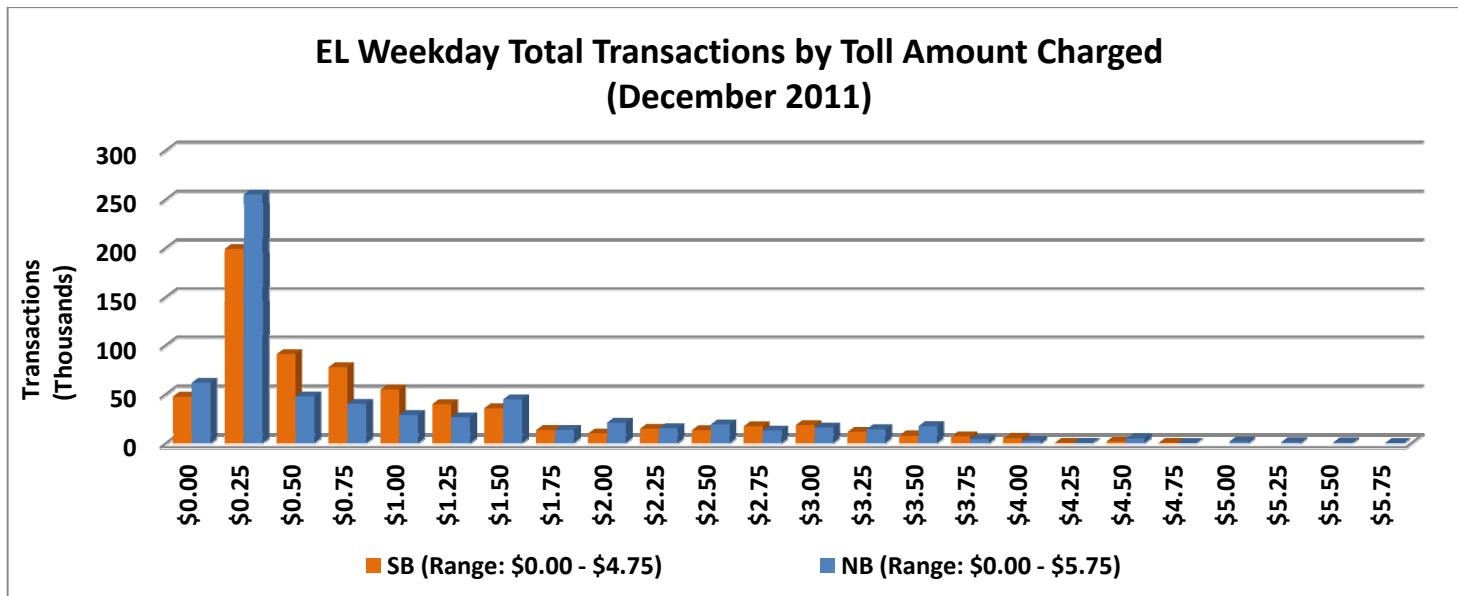


NOTE: ITD = Inception to Date



Revenue/Tolls Statistics

** Peak Period is defined as 6-9 AM (southbound) and 4-7 PM (northbound).

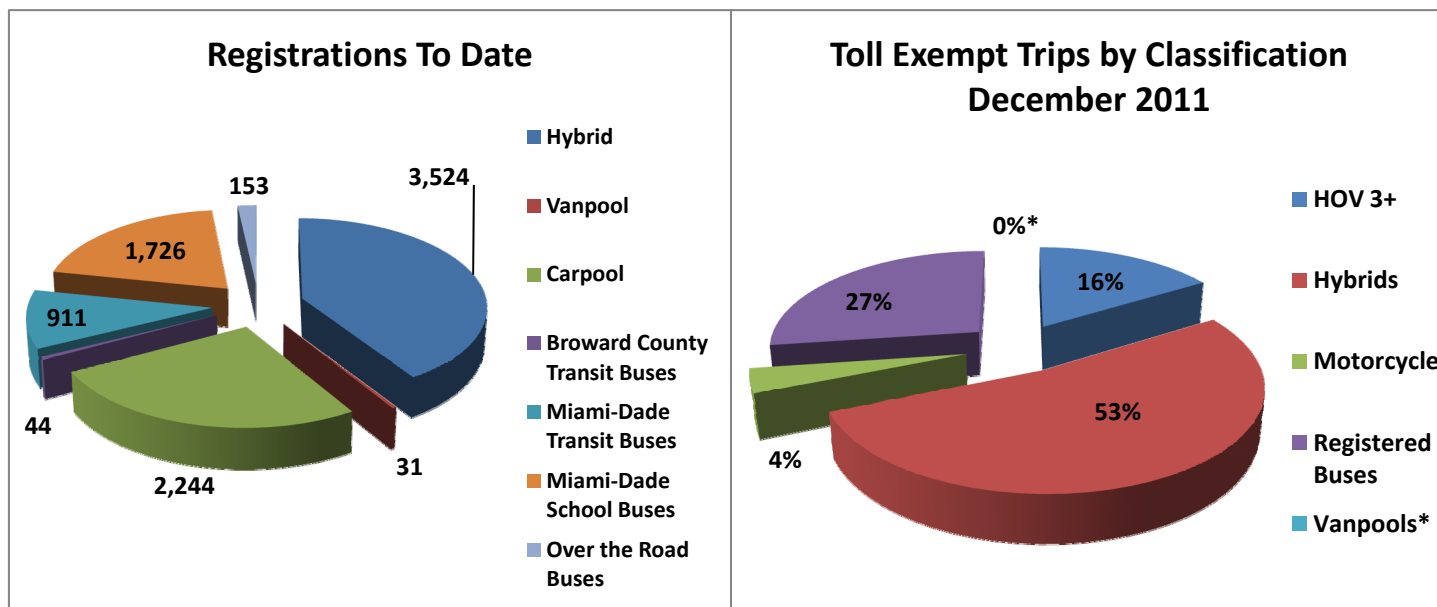


NOTE: ITD = Inception to Date



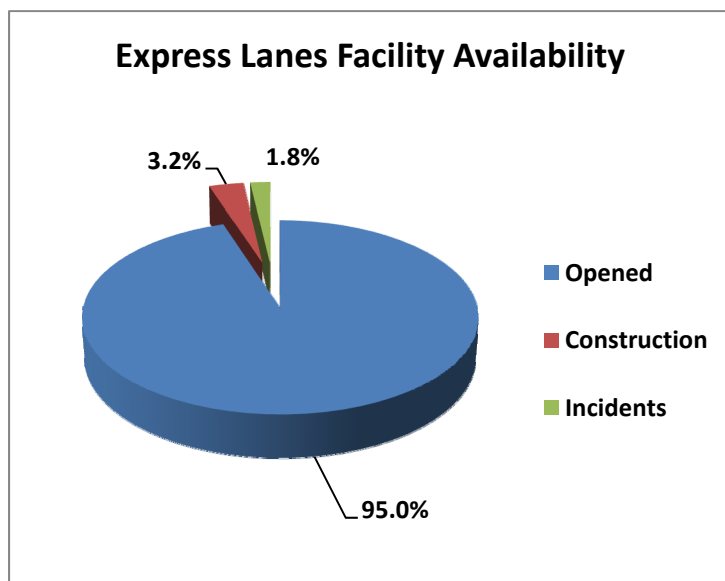
Registrations—Toll Exempt Trips

The total registrations through December 2011 decreased to 8,633. The 29,767 Toll Exempt Trips for this month are shown by classification below.



*Note: Vanpool data is included within Registered Buses.

Facility Availability



The entire 95 Express lanes (both directions) were open to motorists 95.0% of the time, while closed 3.2% due to 8 planned construction/maintenance events (each lasting approximately 6 hours in duration on average) and 1.8% due to 131 non-recurring events (each lasting under 13 minutes in duration on average).