



## Summary of Monthly Operations – February 2012

### General

In total, the 95 Express Lanes:

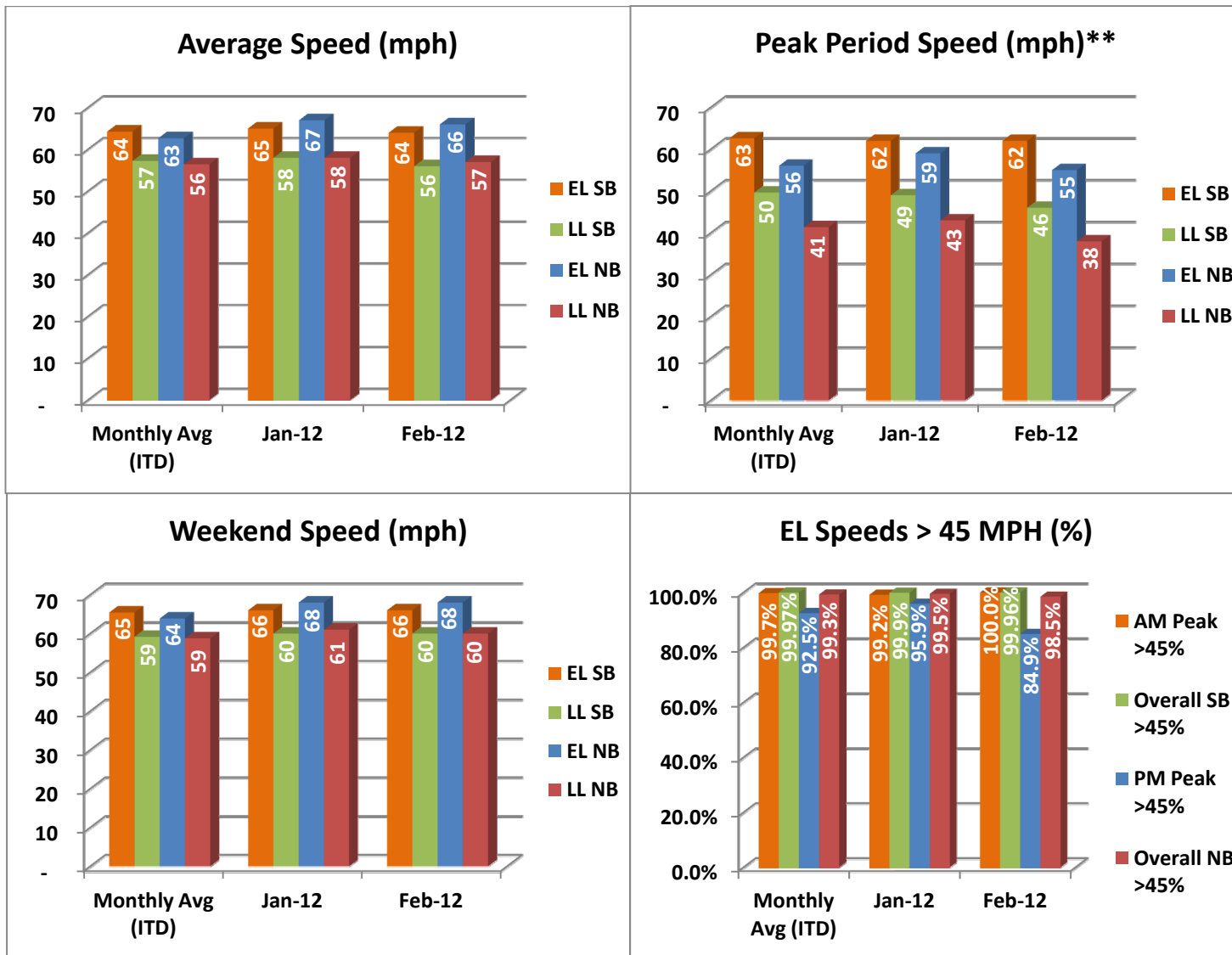
- ✓ Serviced 1,720,147 vehicle trips in February 2012 (3.46 million trips in 2012 to date), bringing the total since opening (December 5, 2008) to approximately 48.6 million trips.
- ✓ Had estimated monthly toll revenue of \$1.65 million in February 2012 (\$3.07 million in 2012 to date), bringing the total revenue to date to approximately \$37.6 million.
- ✓ Increased to a total of 8,716 registered vehicles, resulting in 31,666 toll exempt trips.

| <u>February 2012 Statistics</u>  | <u>Southbound</u> |           |          | <u>Northbound</u> |           |          |
|--|-------------------|-----------|----------|-------------------|-----------|----------|
| <b>Total Trips</b>   | 873,517           |           |          | 846,630           |           |          |
| <b>Exempt Trips</b>  | 17,126            |           |          | 14,540            |           |          |
| <b>Revenue</b>   |                   |           |          |                   |           |          |
|  | \$920,238         |           |          | \$731,925         |           |          |
| <b>Tolls</b>   |                   |           |          |                   |           |          |
| - Range  | \$0.00 - \$6.75   |           |          | \$0.00 - \$7.00   |           |          |
| - Avg. Weekday   | \$1.40            |           |          | \$1.17            |           |          |
| - Avg. Peak Period**   | \$2.32            |           |          | \$2.64            |           |          |
| - Avg. Weekend   | \$0.32            |           |          | \$0.28            |           |          |
| - Avg. Off Peak  | \$1.04            |           |          | \$0.62            |           |          |
| - 85 <sup>th</sup> Percentile Weekday                                    | \$3.25            |           |          | \$2.75            |           |          |
| <b>Volume (veh)</b>  |                   |           |          |                   |           |          |
|  | <b>EL</b>         | <b>LL</b> |          | <b>EL</b>         | <b>LL</b> |          |
| - Avg. Weekday   | 33,797            | 110,880   |          | 32,711            | 97,916    |          |
| - Avg. Peak Period**   | 9,379             | 19,210    |          | 8,898             | 17,577    |          |
| <b>Speed (mph)</b>   |                   |           |          |                   |           |          |
|  | <b>EL</b>         | <b>LL</b> | <b>Δ</b> | <b>EL</b>         | <b>LL</b> | <b>Δ</b> |
| - Avg. Overall   | 64                | 56        | 8        | 66                | 57        | 9        |
| - Avg. Peak Period**   | 62                | 46        | 16       | 55                | 38        | 17       |
| <b>Operated Above 45 MPH</b>   |                   |           |          |                   |           |          |
|  | 99.96%            |           |          | 98.5%             |           |          |
| <b>Remained Open to Motorists</b>  |                   |           |          |                   |           |          |
|  | 94.8%             |           |          | 95.2%             |           |          |
| <b>Closed due to Planned Construction</b>                                |                   |           |          |                   |           |          |
|  | 3.7%              |           |          | 2.5%              |           |          |
| <b>Closed due to Non-recurring Events</b>                                |                   |           |          |                   |           |          |
|  | 1.5%              |           |          | 2.4%              |           |          |
| EL (Express Lanes); LL (Local Lanes)                                     |                   |           |          |                   |           |          |
| **Peak Period is defined as 6-9 AM (southbound) and 4-7 PM (northbound). |                   |           |          |                   |           |          |



## Operations/Traffic Statistics - Speed Data

\*\* Peak Period is defined as 6-9 AM (southbound) and 4-7 PM (northbound).

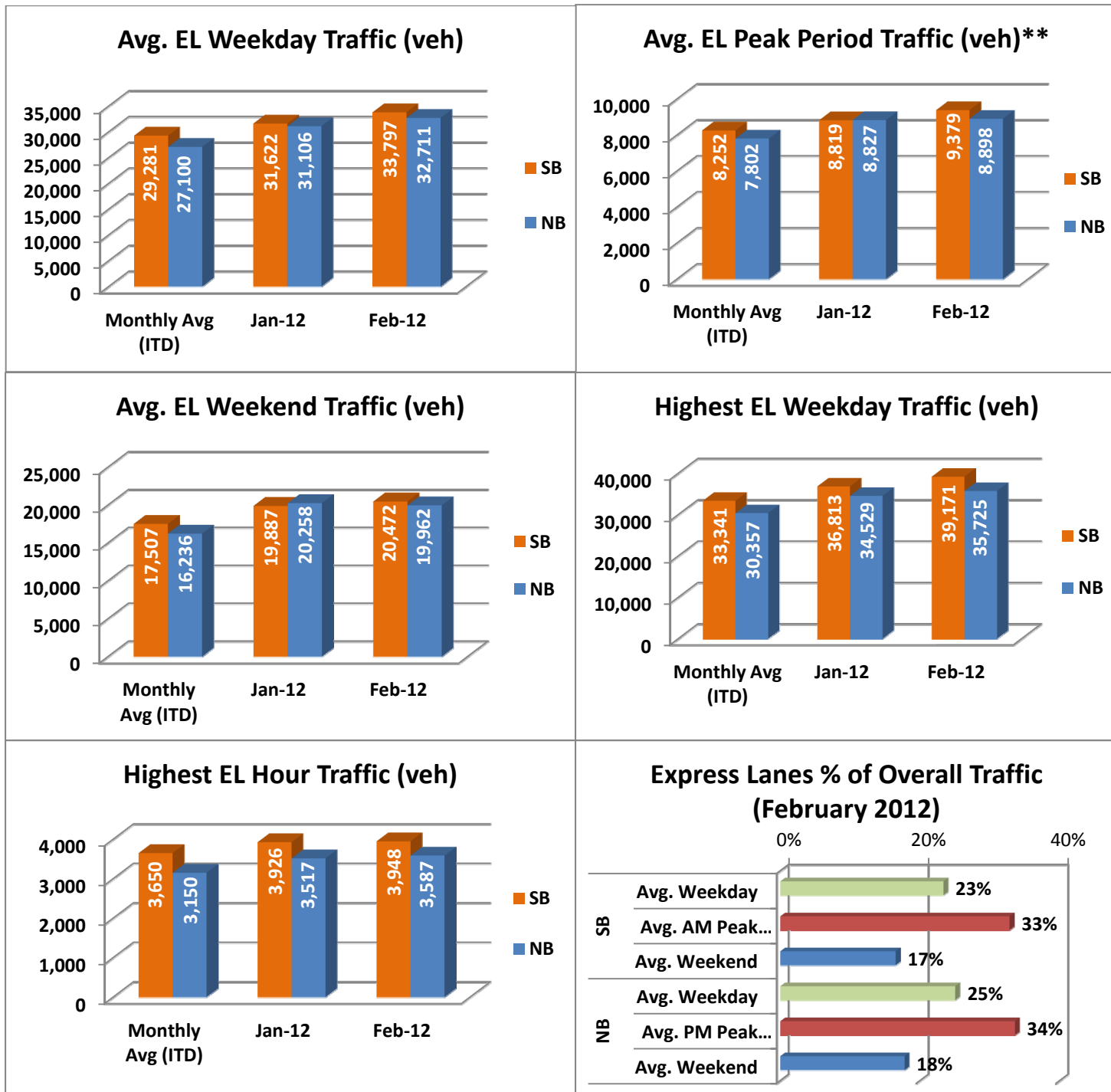


NOTE: ITD = Inception to Date



## Operations/Traffic Statistics - Volume Data

\*\* Peak Period is defined as 6-9 AM (southbound) and 4-7 PM (northbound).

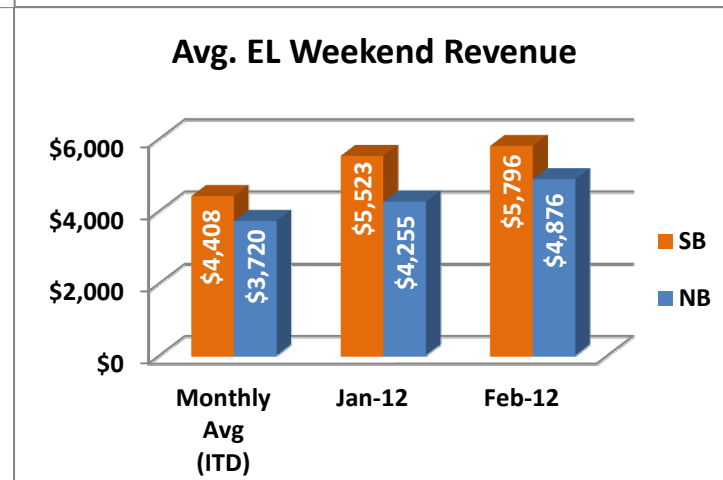
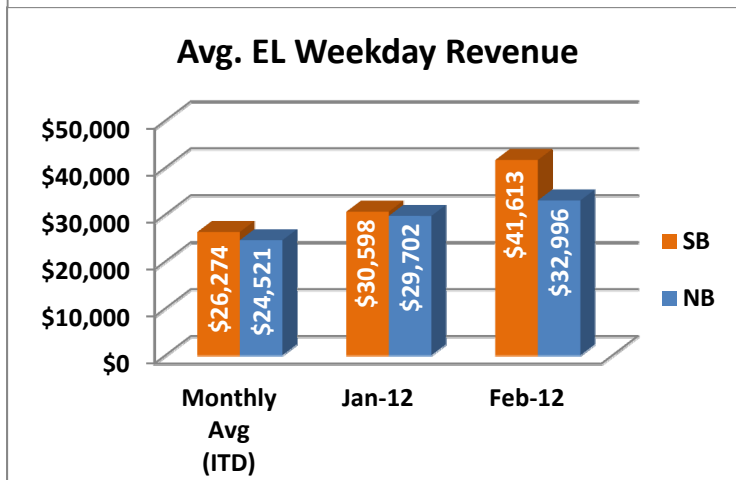
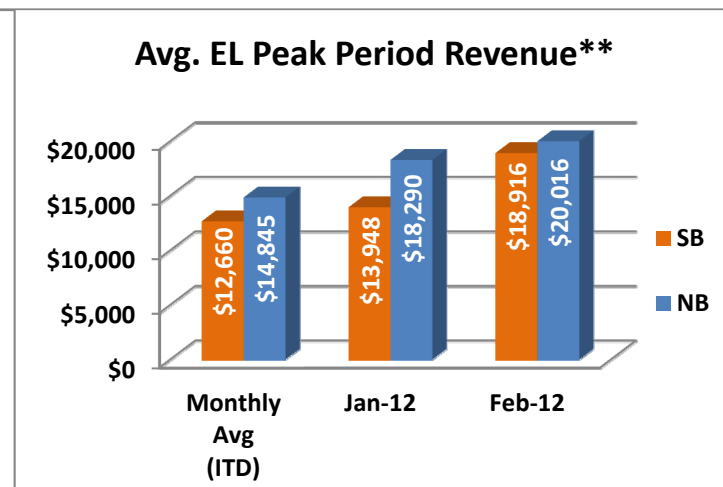
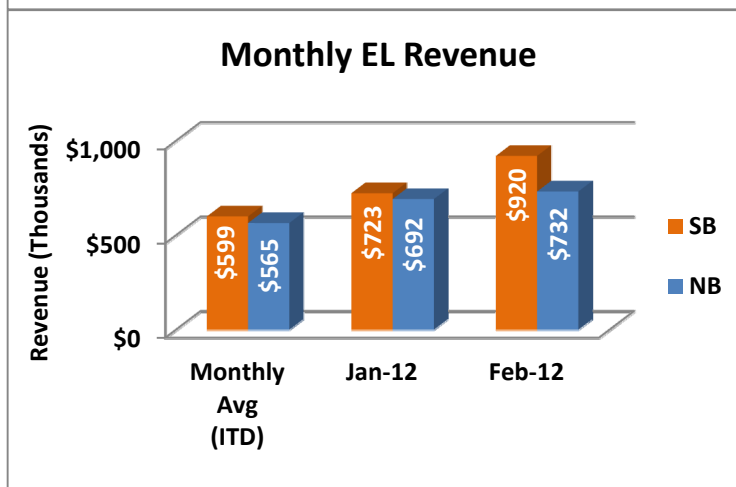
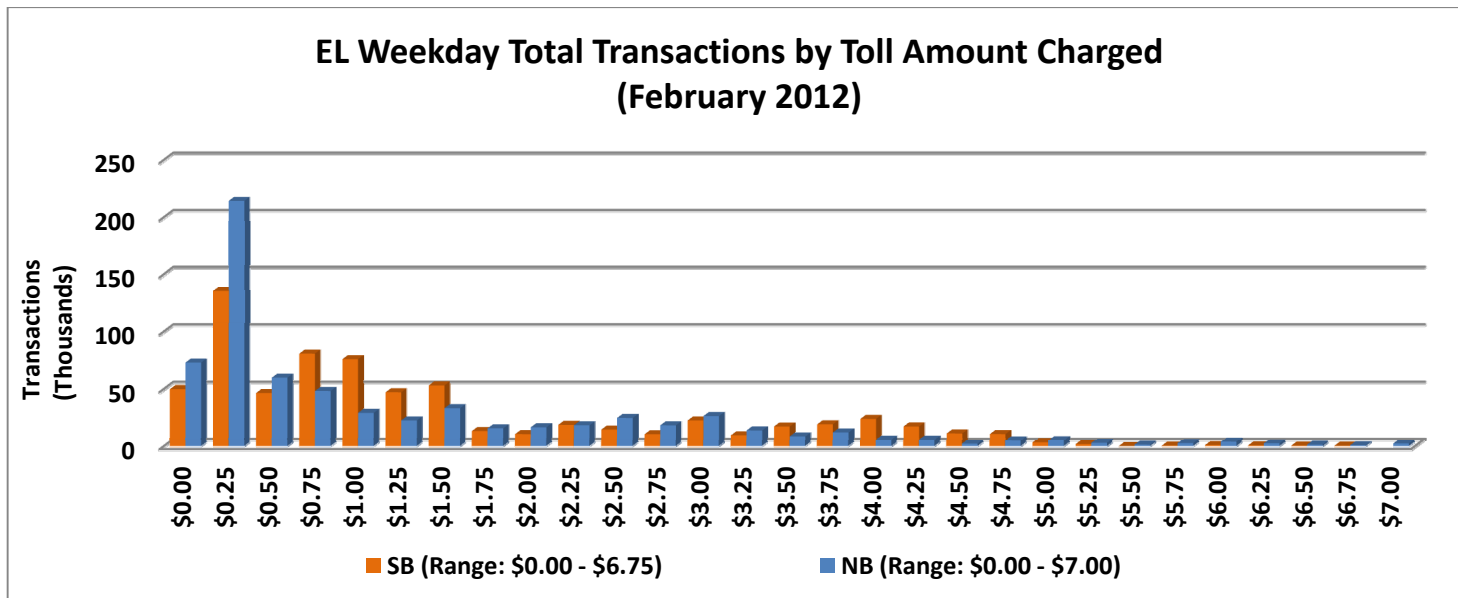


NOTE: ITD = Inception to Date



## Revenue/Tolls Statistics

\*\* Peak Period is defined as 6-9 AM (southbound) and 4-7 PM (northbound).

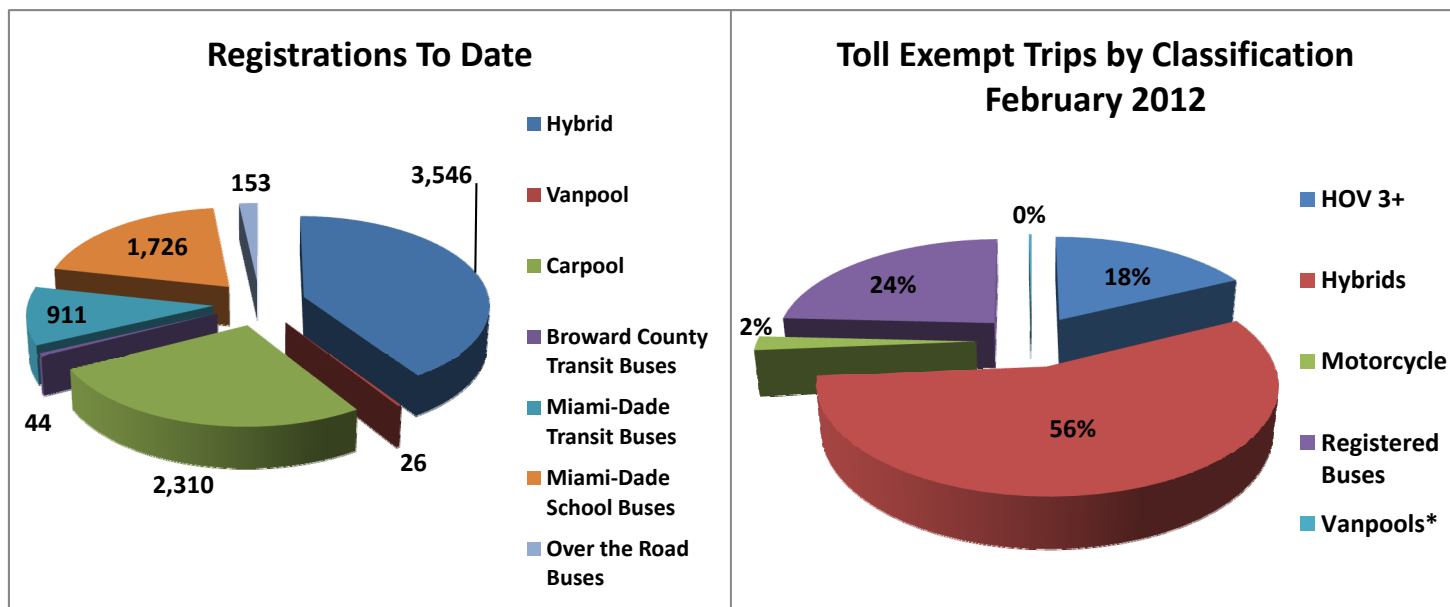


NOTE: ITD = Inception to Date



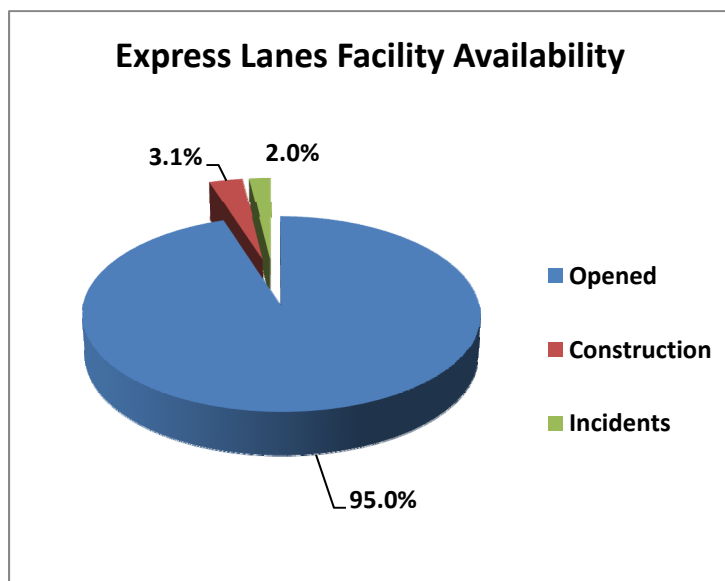
## Registrations—Toll Exempt Trips

The total registrations through February 2012 increased to 8,716. The 31,666 Toll Exempt Trips for this month are shown by classification below.



\*Note: a portion of the Vanpool data is included within Registered Buses.

## Facility Availability



The entire 95 Express lanes (both directions) were open to motorists 95.0% of the time, while closed 3.1% due to 8 planned construction/maintenance events (each lasting 5 hours, 23 minutes in duration on average) and 2.0% due to 134 non-recurring events (each lasting approximately 12 minutes in duration on average).