



Summary of Monthly Operations – March 2012

General

In total, the 95 Express Lanes:

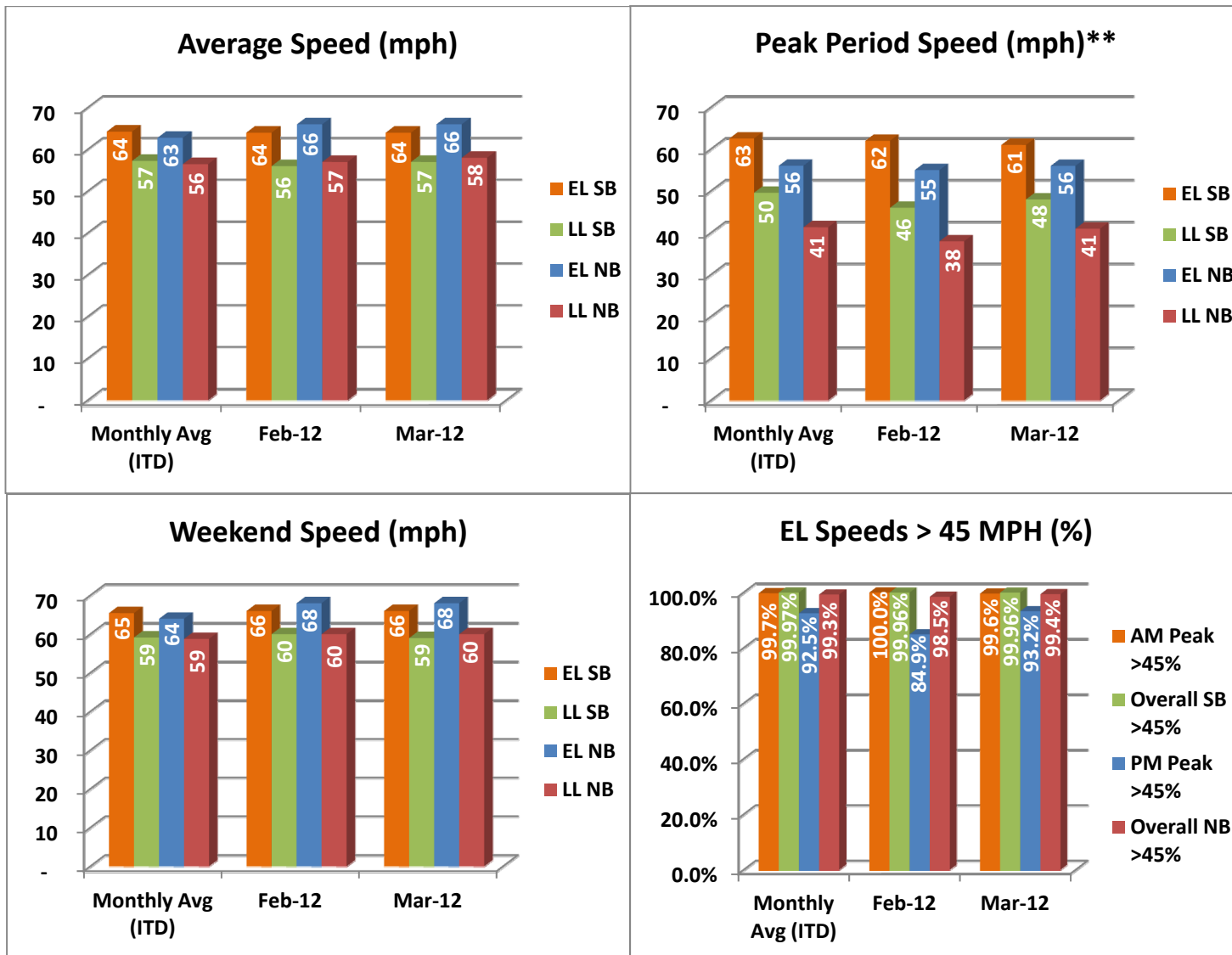
- ✓ Serviced 1,898,235 vehicle trips in March 2012 (5.36 million trips in 2012 to date), bringing the total since opening (December 5, 2008) to approximately 50.5 million trips.
- ✓ Had estimated monthly toll revenue of \$1.78 million in March 2012 (\$4.85 million in 2012 to date), bringing the total revenue to date to approximately \$39.4 million.
- ✓ Maintained a total of 8,716 registered vehicles, resulting in 34,576 toll exempt trips.

<u>March 2012 Statistics</u>	<u>Southbound</u>			<u>Northbound</u>		
Total Trips	964,330			933,905		
Exempt Trips	17,837			16,739		
Revenue						
	\$949,790			\$833,766		
Tolls						
- Range	\$0.00 - \$7.00			\$0.00 - \$7.00		
- Avg. Weekday	\$1.31			\$1.24		
- Avg. Peak Period**	\$2.11			\$2.98		
- Avg. Weekend	\$0.44			\$0.27		
- Avg. Off Peak	\$1.02			\$0.61		
- 85 th Percentile Weekday	\$2.75			\$2.50		
Volume (veh)						
	EL	LL		EL	LL	
- Avg. Weekday	34,121	115,019		32,959	97,842	
- Avg. Peak Period**	11,739	19,700		8,717	17,109	
Speed (mph)						
	EL	LL	Δ	EL	LL	Δ
- Avg. Overall	64	57	7	66	58	8
- Avg. Peak Period**	61	48	13	56	41	15
Operated Above 45 MPH						
	99.96%			99.4%		
Remained Open to Motorists						
	94.1%			93.6%		
Closed due to Planned Construction						
	3.8%			3.7%		
Closed due to Non-recurring Events						
	2.1%			2.7%		
<i>EL (Express Lanes); LL (Local Lanes)</i>						
<i>**Peak Period is defined as 6-9 AM (southbound) and 4-7 PM (northbound).</i>						



Operations/Traffic Statistics - Speed Data

** Peak Period is defined as 6-9 AM (southbound) and 4-7 PM (northbound).

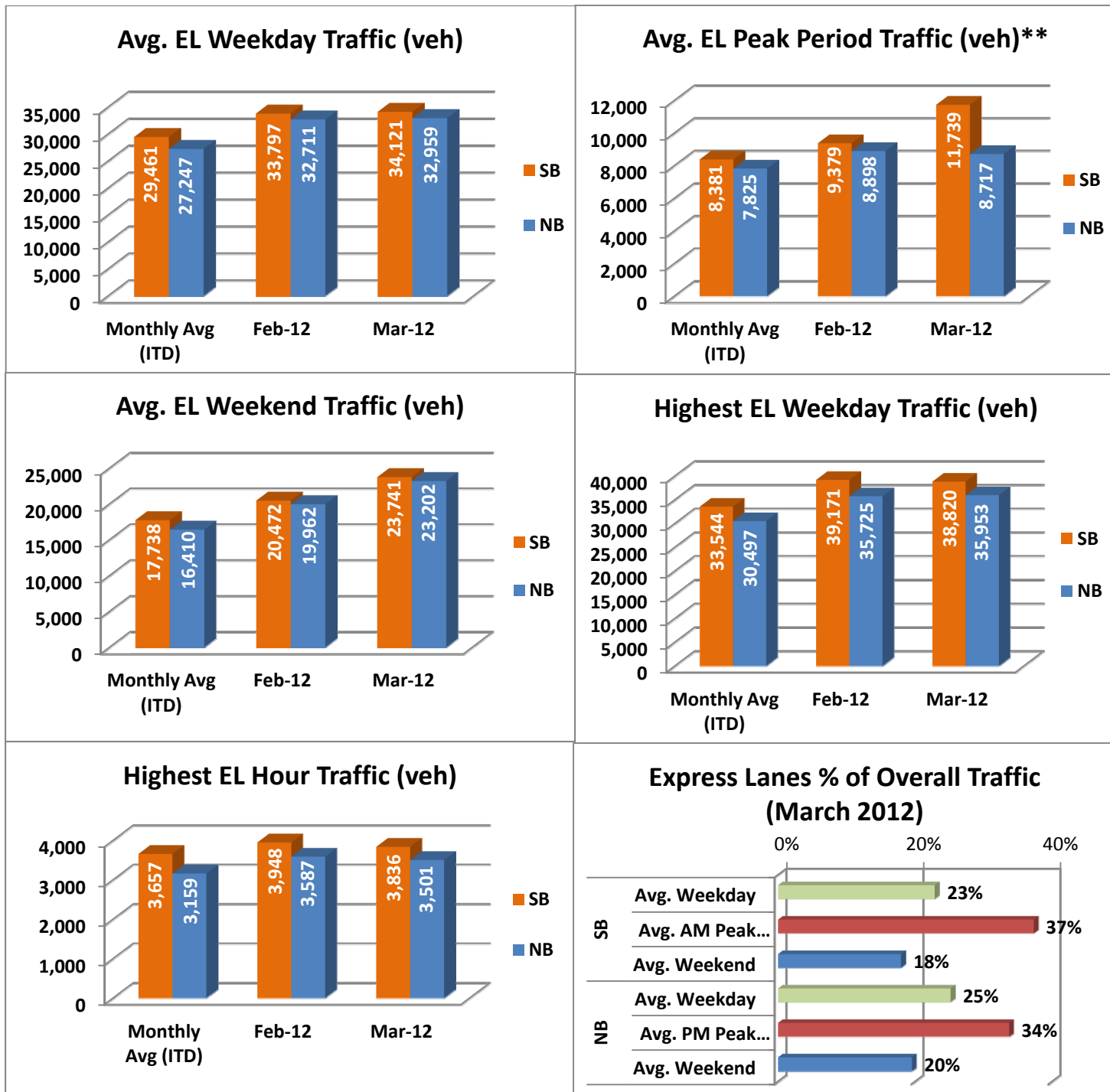


NOTE: ITD = Inception to Date



Operations/Traffic Statistics - Volume Data

** Peak Period is defined as 6-9 AM (southbound) and 4-7 PM (northbound).

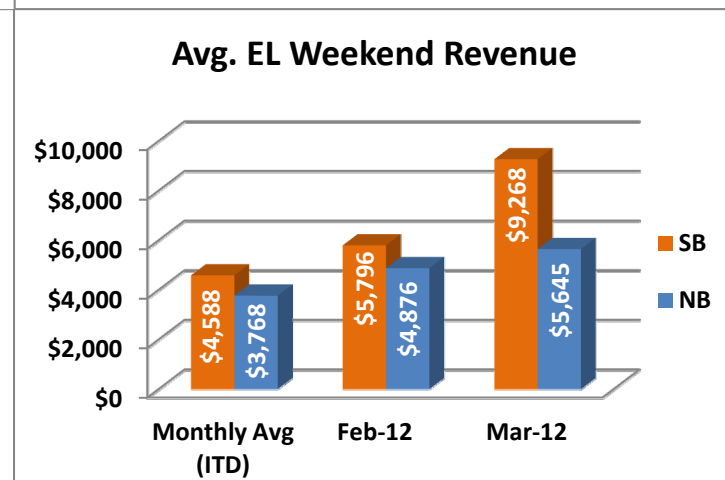
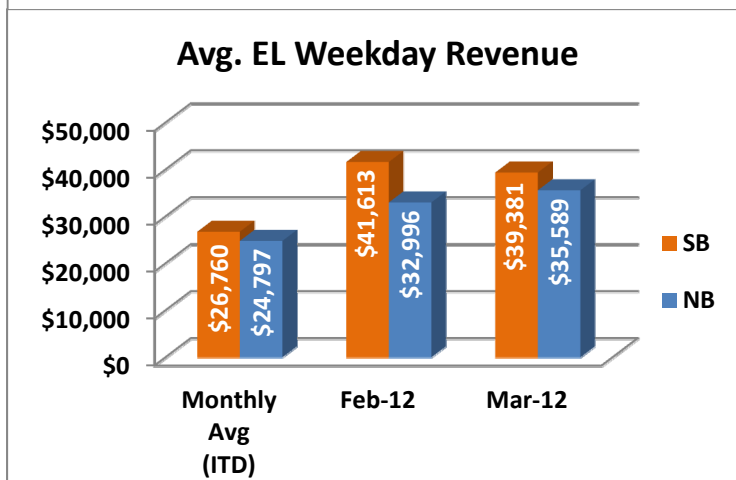
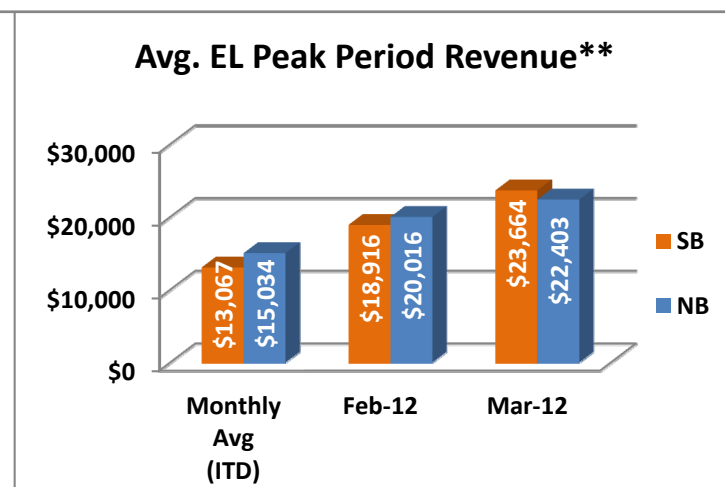
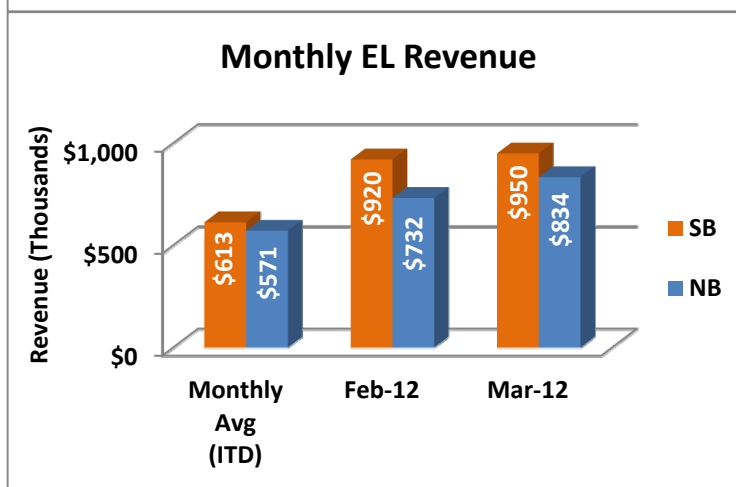
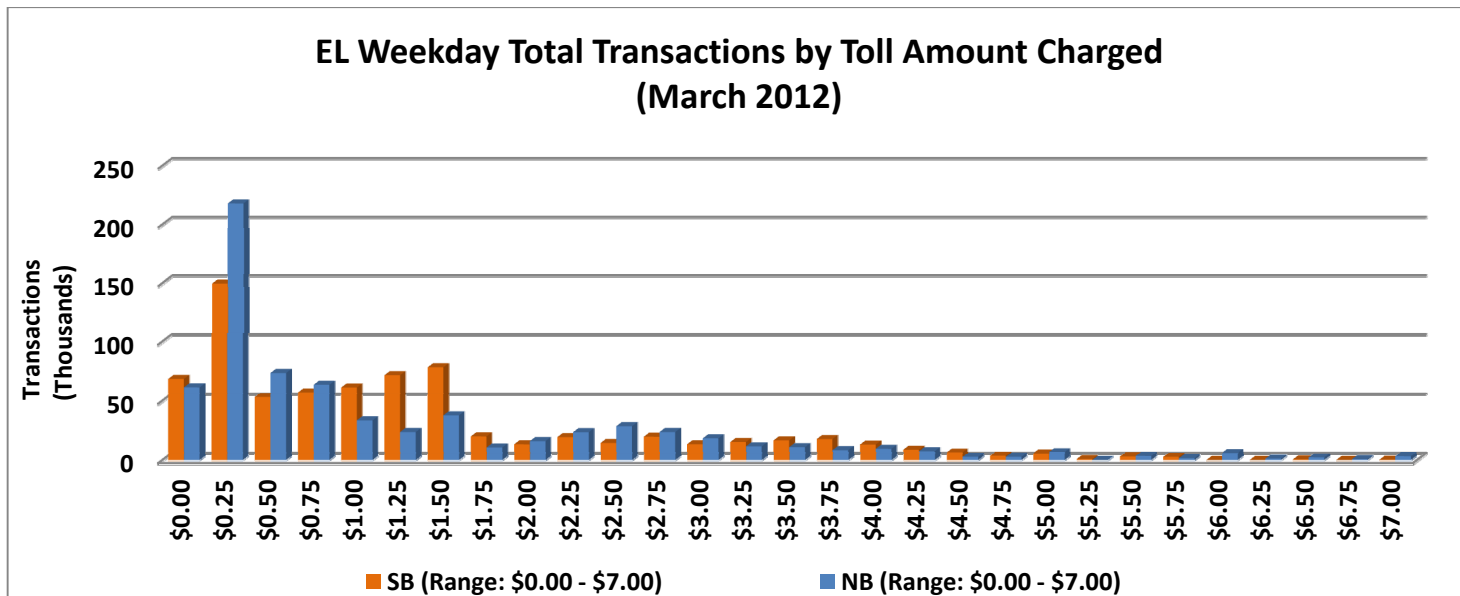


NOTE: ITD = Inception to Date



Revenue/Tolls Statistics

** Peak Period is defined as 6-9 AM (southbound) and 4-7 PM (northbound).

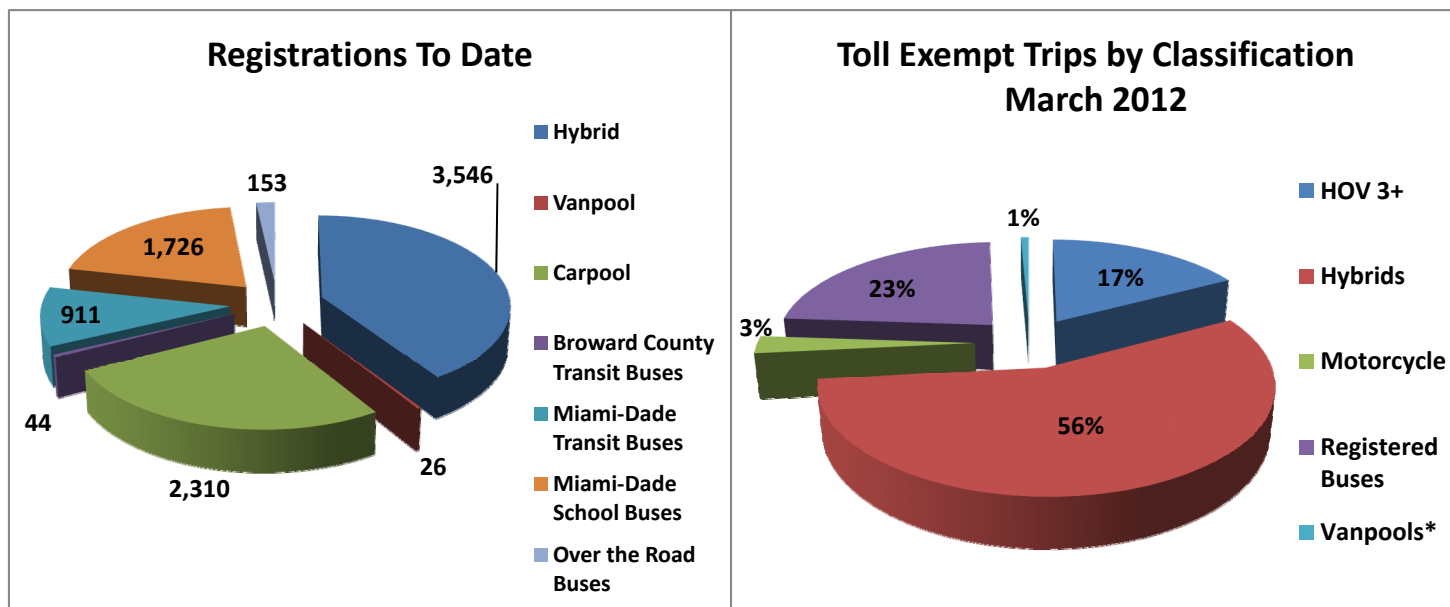


NOTE: ITD = Inception to Date



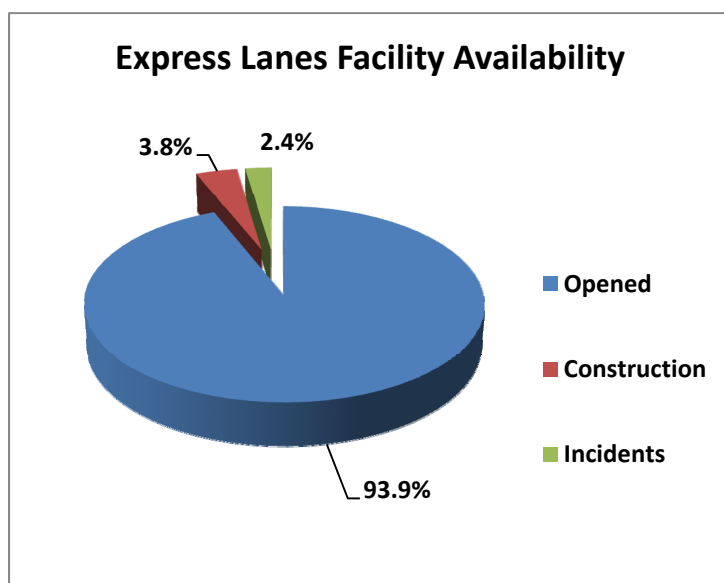
Registrations—Toll Exempt Trips

The total registrations through March 2012 stayed the same at 8,716. The 34,576 Toll Exempt Trips for this month are shown by classification below.



*Note: a portion of the Vanpool data is included within Registered Buses.

Facility Availability



The entire 95 Express lanes (both directions) were open to motorists 93.9% of the time, while closed 3.8% due to 10 planned construction/maintenance events (each lasting 5 hours, 35 minutes in duration on average) and 2.4% due to 143 non-recurring events (each lasting approximately 15 minutes in duration on average).