



## Summary of Monthly Operations – April 2012

### General

In total, the 95 Express Lanes:

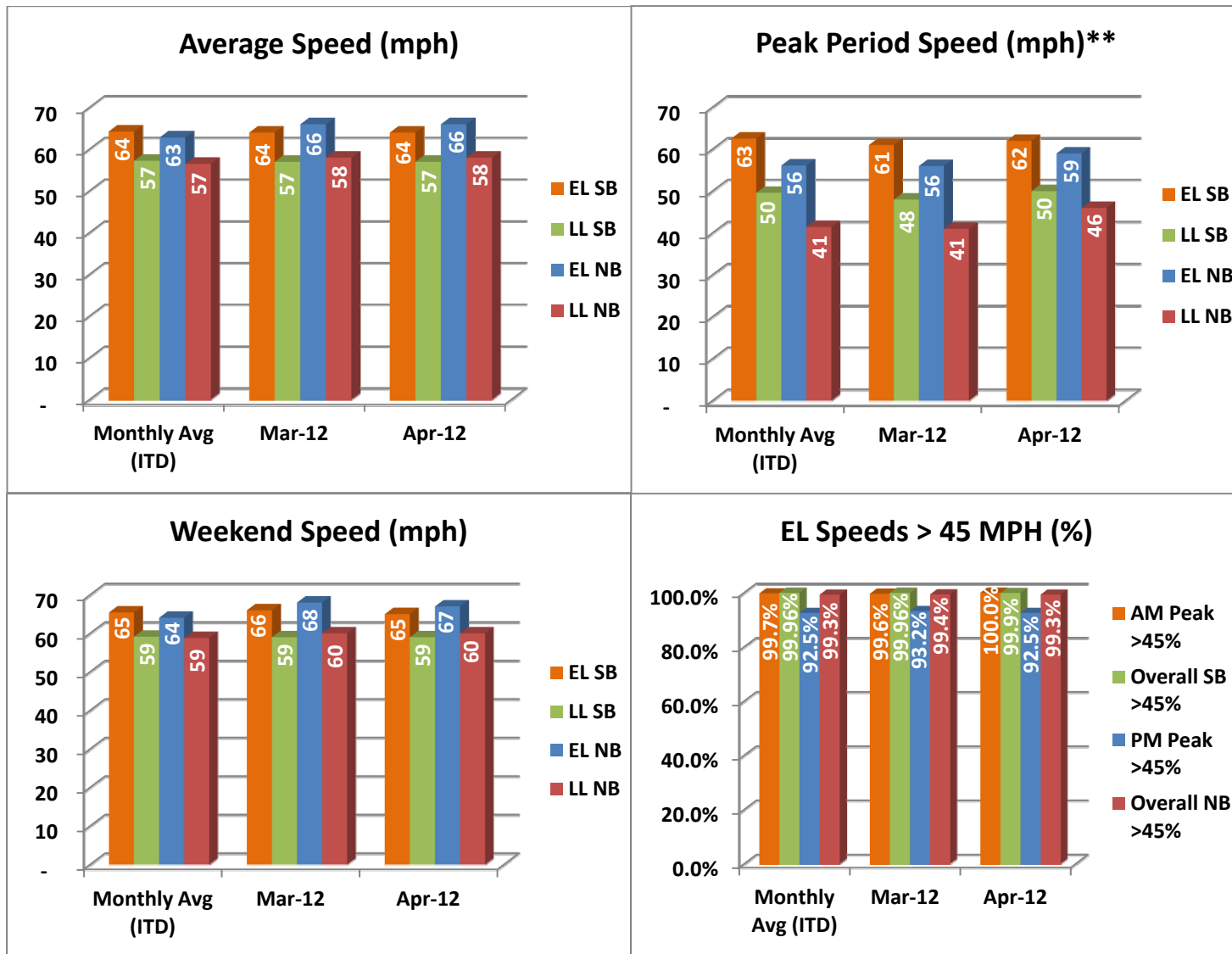
- ✓ Serviced 1,744,051 vehicle trips in April 2012 (7.10 million trips in 2012 to date), bringing the total since opening (December 5, 2008) to approximately 52.2 million trips.
- ✓ Had estimated monthly toll revenue of \$1.44 million in April 2012 (\$6.29 million in 2012 to date), bringing the total revenue to date to approximately \$40.9 million.
- ✓ Increased to a total of 8,760 registered vehicles, resulting in 33,414 toll exempt trips.

<u>April 2012 Statistics</u>	<u>Southbound</u>			<u>Northbound</u>		
<b>Total Trips</b>	876,330			867,721		
<b>Exempt Trips</b>	17,596			15,818		
<b>Revenue</b>						
	\$789,530			\$649,554		
<b>Tolls</b>						
- Range	\$0.00 - \$6.75			\$0.00 - \$7.00		
- Avg. Weekday	\$1.21			\$1.15		
- Avg. Peak Period**	\$1.92			\$2.30		
- Avg. Weekend	\$0.31			\$0.28		
- Avg. Off Peak	\$0.95			\$0.56		
- 85 <sup>th</sup> Percentile Weekday	\$2.75			\$2.00		
<b>Volume (veh)</b>						
	<b>EL</b>	<b>LL</b>		<b>EL</b>	<b>LL</b>	
- Avg. Weekday	32,961	112,740		32,382	98,258	
- Avg. Peak Period**	11,723	20,172		8,503	17,656	
<b>Speed (mph)</b>						
	<b>EL</b>	<b>LL</b>	<b>Δ</b>	<b>EL</b>	<b>LL</b>	<b>Δ</b>
- Avg. Overall	64	57	7	66	58	8
- Avg. Peak Period**	62	50	12	59	46	13
<b>Operated Above 45 MPH</b>						
	99.9%			99.3%		
<b>Remained Open to Motorists</b>						
	94.6%			94.7%		
<b>Closed due to Planned Construction</b>						
	3.4%			2.6%		
<b>Closed due to Non-recurring Events</b>						
	2.0%			2.7%		
<i>EL (Express Lanes); LL (Local Lanes)</i>						
<i>**Peak Period is defined as 6-9 AM (southbound) and 4-7 PM (northbound).</i>						



## Operations/Traffic Statistics - Speed Data

\*\* Peak Period is defined as 6-9 AM (southbound) and 4-7 PM (northbound).

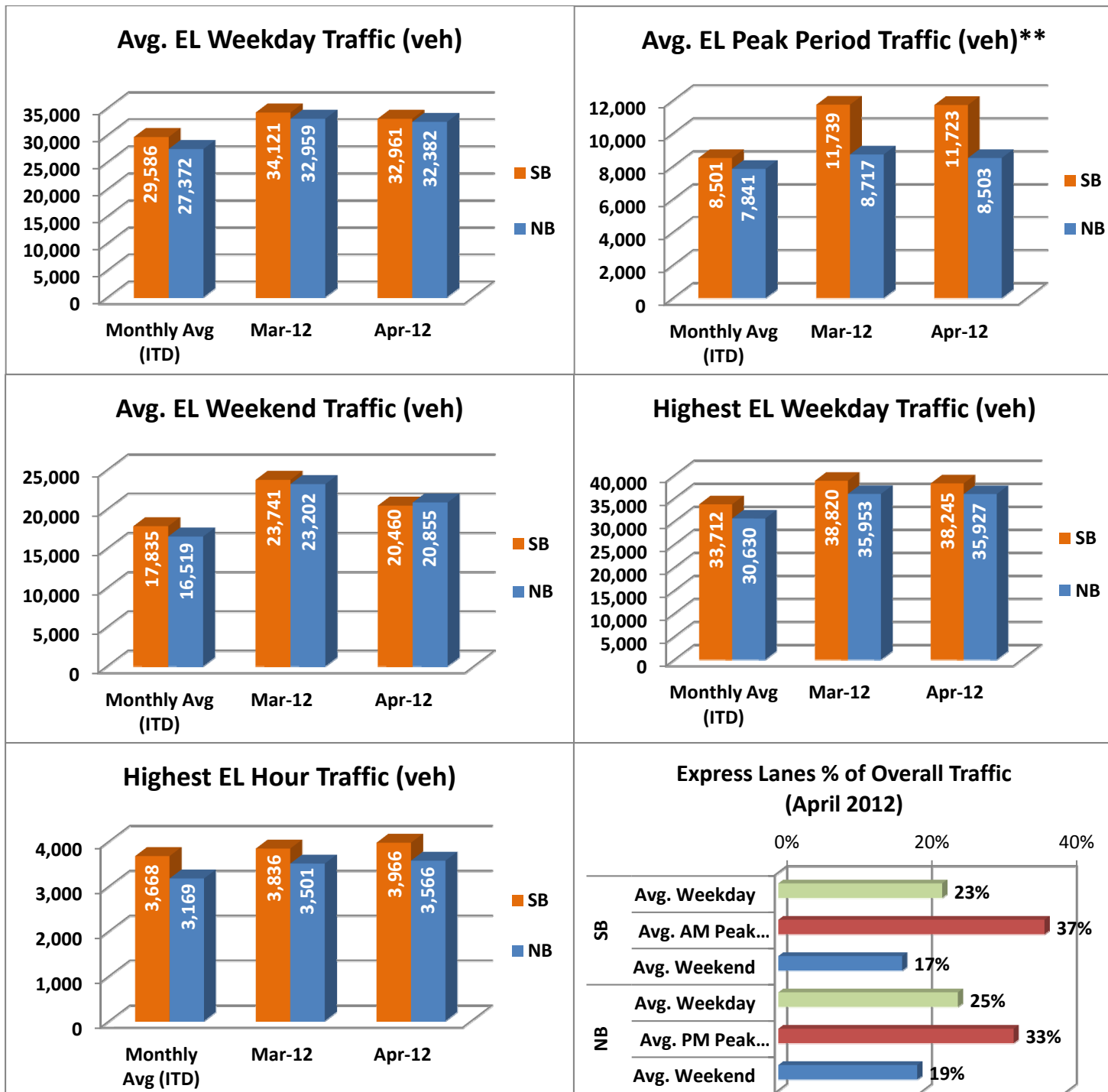


NOTE: ITD = Inception to Date



## Operations/Traffic Statistics - Volume Data

\*\* Peak Period is defined as 6-9 AM (southbound) and 4-7 PM (northbound).

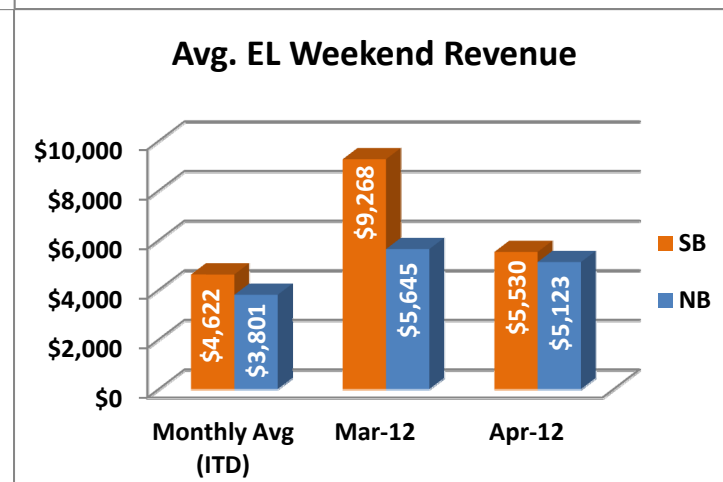
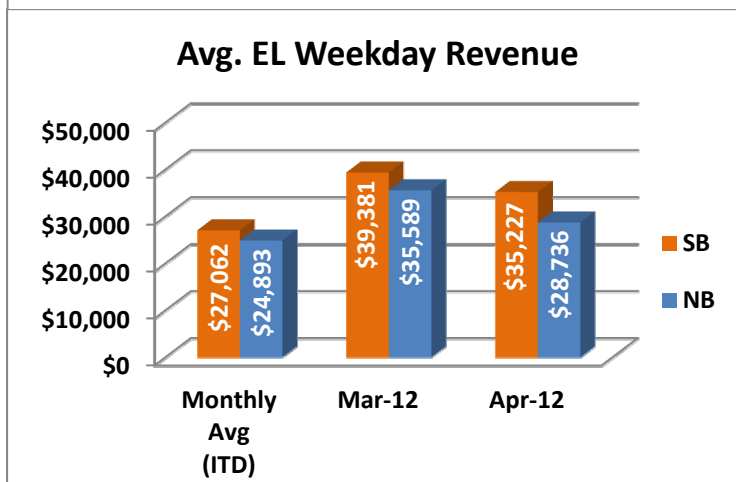
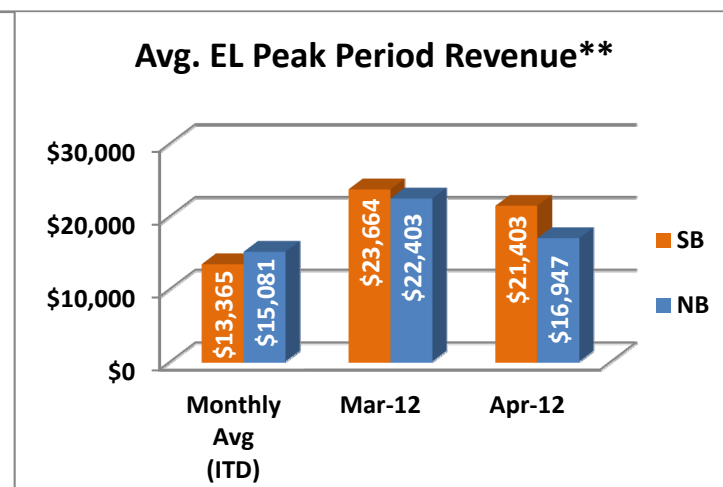
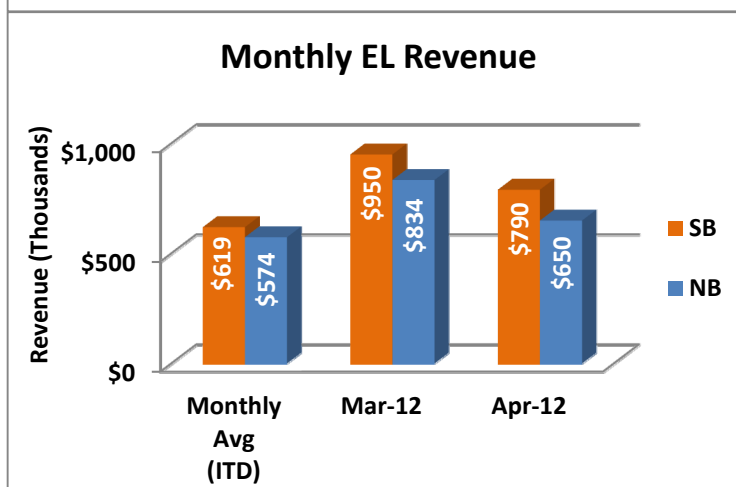
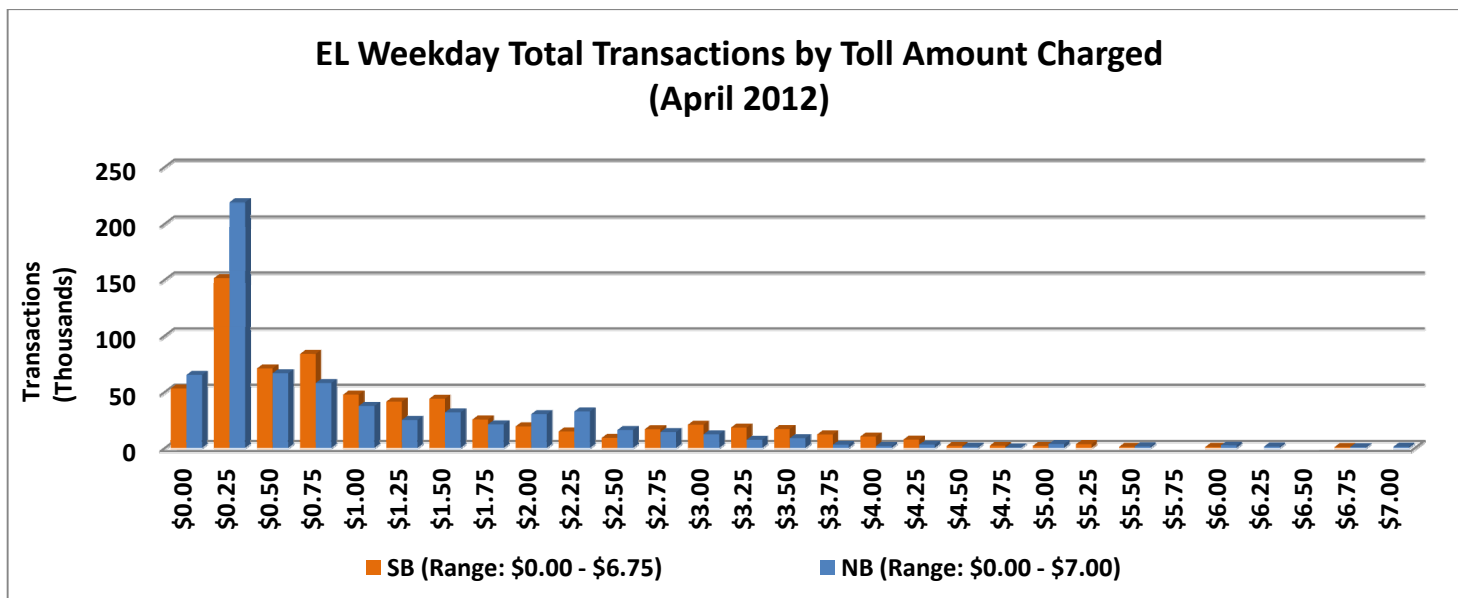


NOTE: ITD = Inception to Date



## Revenue/Tolls Statistics

\*\* Peak Period is defined as 6-9 AM (southbound) and 4-7 PM (northbound).

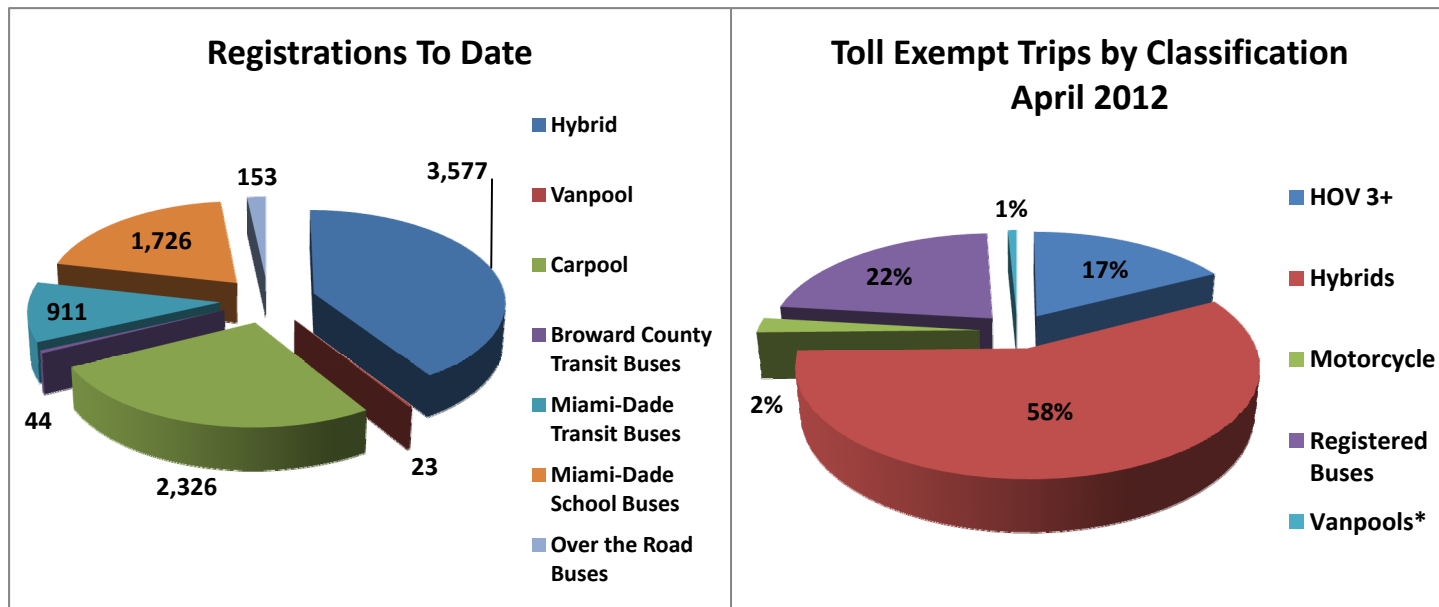


NOTE: ITD = Inception to Date



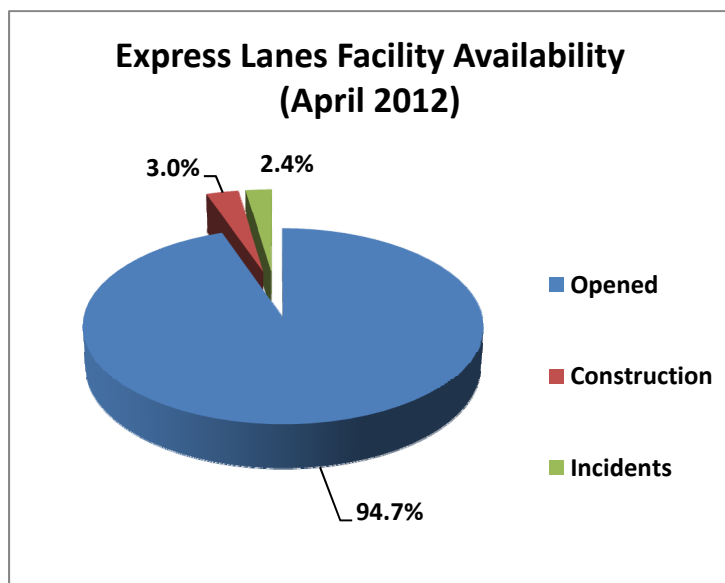
## Registrations—Toll Exempt Trips

The total registrations through April 2012 increased to 8,760. The 33,414 Toll Exempt Trips for this month are shown by classification below.



\*Note: a portion of the Vanpool data is included within Registered Buses.

## Facility Availability



The entire 95 Express lanes (both directions) were open to motorists 94.7% of the time, while closed 3.0% due to 9 planned construction/maintenance events (each lasting 4 hours, 45 minutes in duration on average) and 2.4% due to 154 non-recurring events (each lasting approximately 13 minutes in duration on average).