



Summary of Monthly Operations – August 2012

General

In total, the 95 Express Lanes:

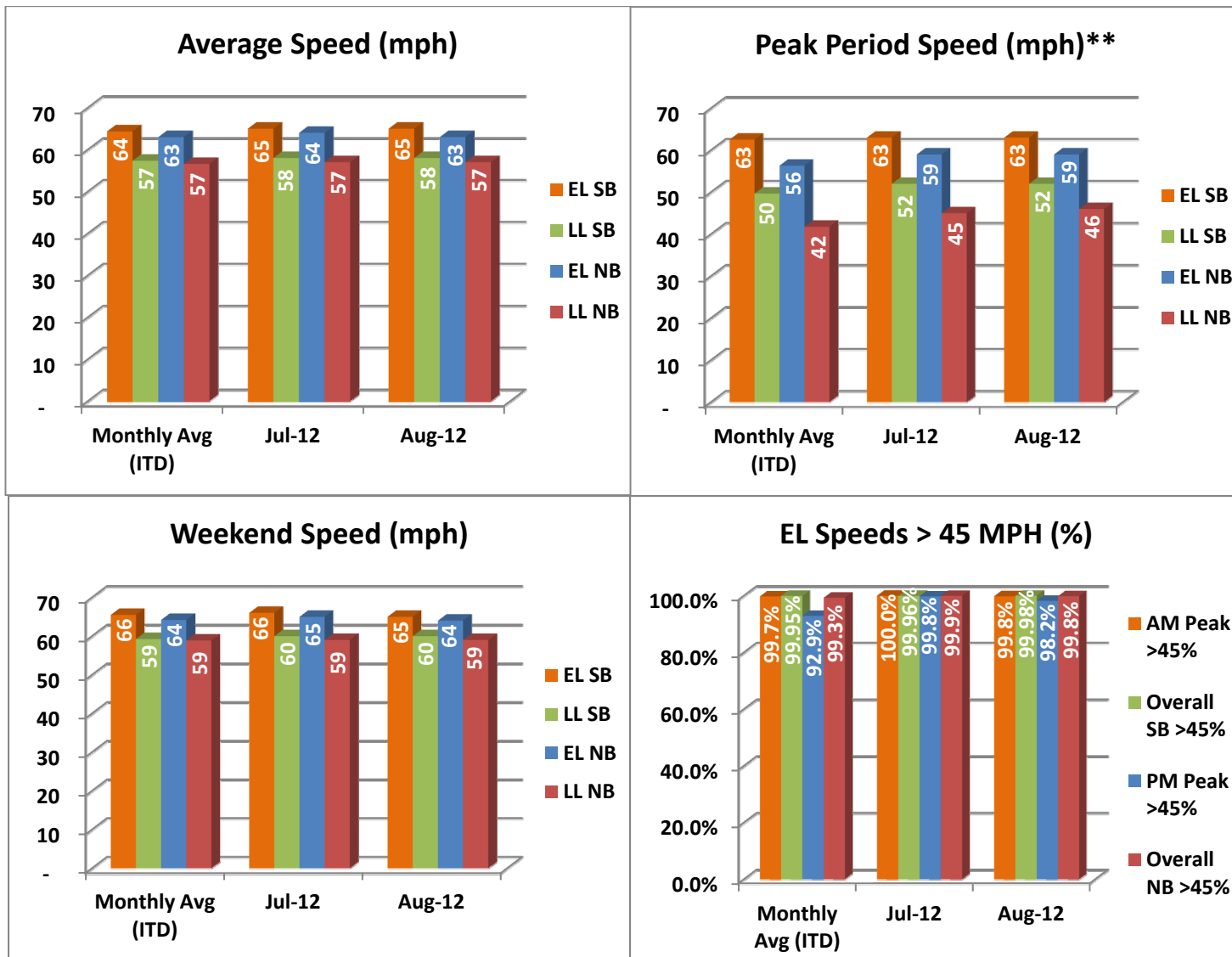
- ✓ Serviced 1,745,720 vehicle trips in August 2012 (14.0 million trips in 2012 to date), bringing the total since opening (December 5, 2008) to approximately 59.1 million trips.
- ✓ Had estimated monthly toll revenue of \$1.19 million in August 2012 (\$11.4 million in 2012 to date), bringing the total revenue to date to approximately \$46.0 million.
- ✓ Increased to a total of 8,880 registered vehicles, resulting in 37,165 toll exempt trips.

<u>August 2012 Statistics</u>	<u>Southbound</u>			<u>Northbound</u>		
Total Trips	878,992			866,728		
Exempt Trips	19,047			18,118		
Revenue						
	\$581,486			\$610,360		
Tolls						
- Range	\$0.00 - \$4.75			\$0.00 - \$7.00		
- Avg. Weekday	\$0.86			\$0.93		
- Avg. Peak Period**	\$1.53			\$2.09		
- Avg. Weekend	\$0.23			\$0.22		
- Avg. Off Peak	\$0.62			\$0.47		
- 85 th Percentile Weekday	\$2.00			\$2.00		
Volume (veh)						
	EL	LL		EL	LL	
- Avg. Weekday	31,973	104,673		31,503	100,899	
- Avg. Peak Period**	11,058	18,521		8,909	19,148	
Speed (mph)						
	EL	LL	Δ	EL	LL	Δ
- Avg. Overall	65	58	7	63	57	6
- Avg. Peak Period**	63	52	11	59	46	13
Operated Above 45 MPH						
	99.98%			99.8%		
Remained Open to Motorists						
	94.3%			93.7%		
Closed due to Planned Construction						
	3.8%			3.6%		
Closed due to Non-recurring Events						
	1.9%			2.8%		
EL (Express Lanes); LL (Local Lanes)						
**Peak Period is defined as 6-9 AM (southbound) and 4-7 PM (northbound).						



Operations/Traffic Statistics - Speed Data

** Peak Period is defined as 6-9 AM (southbound) and 4-7 PM (northbound).

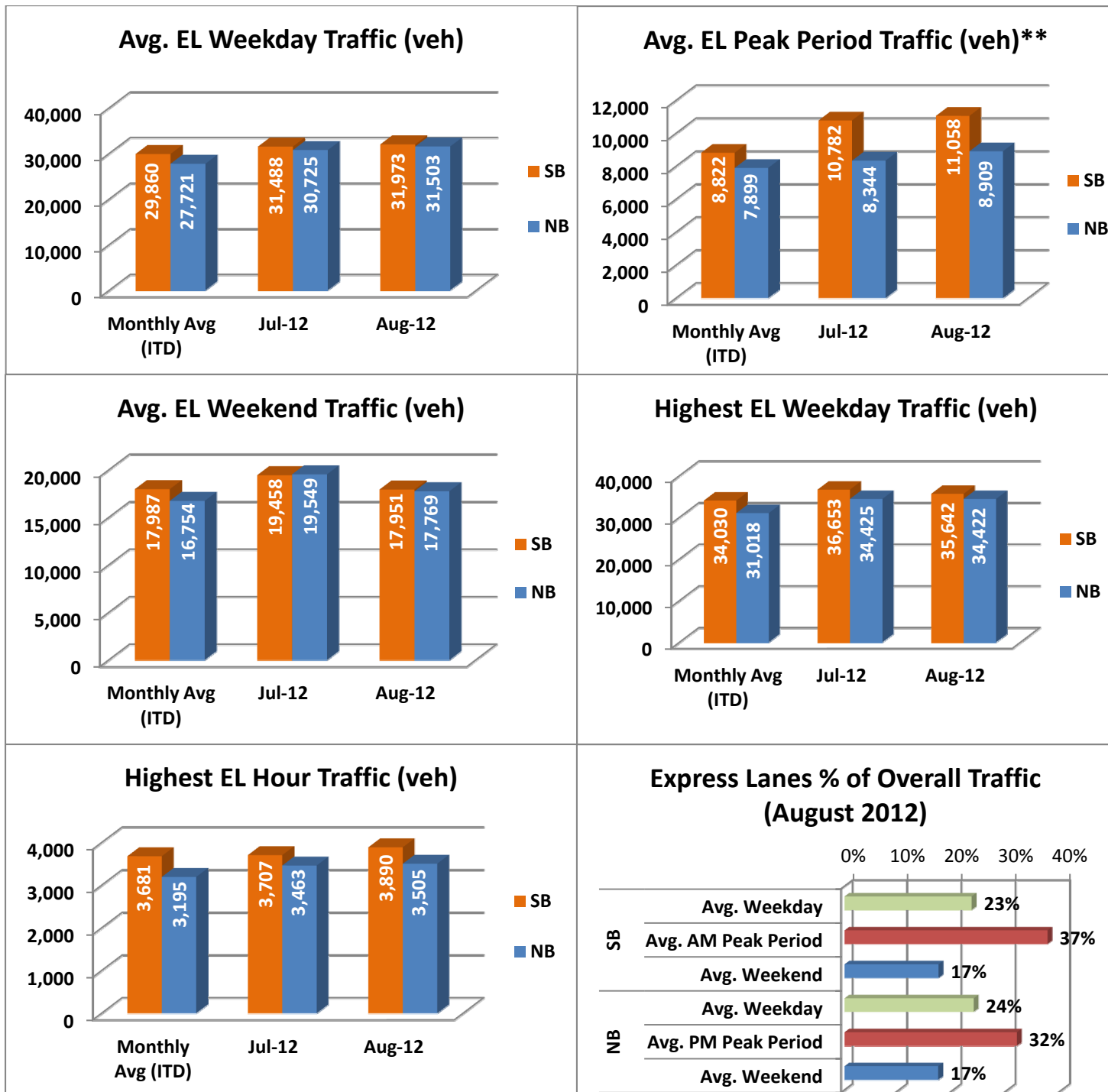


NOTE: ITD = Inception to Date



Operations/Traffic Statistics - Volume Data

** Peak Period is defined as 6-9 AM (southbound) and 4-7 PM (northbound).

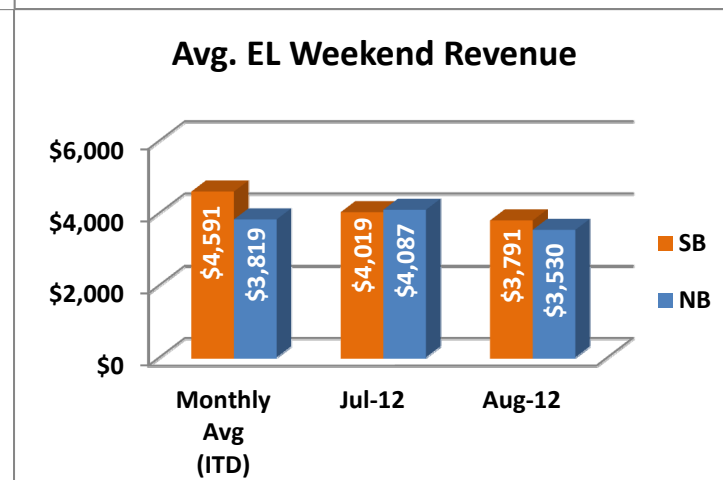
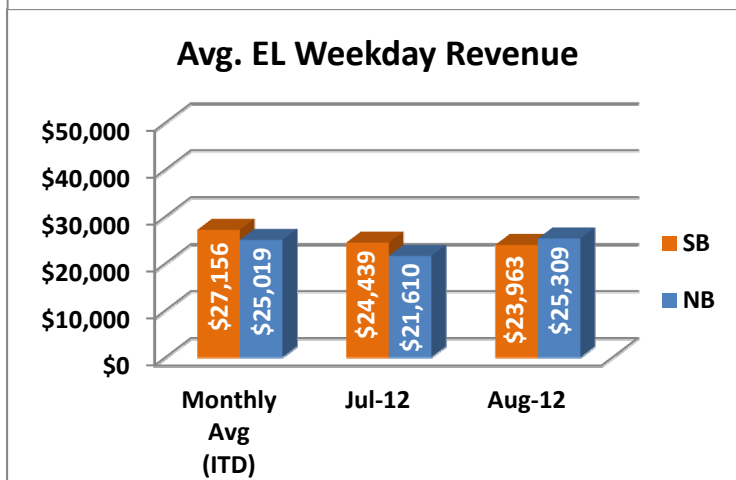
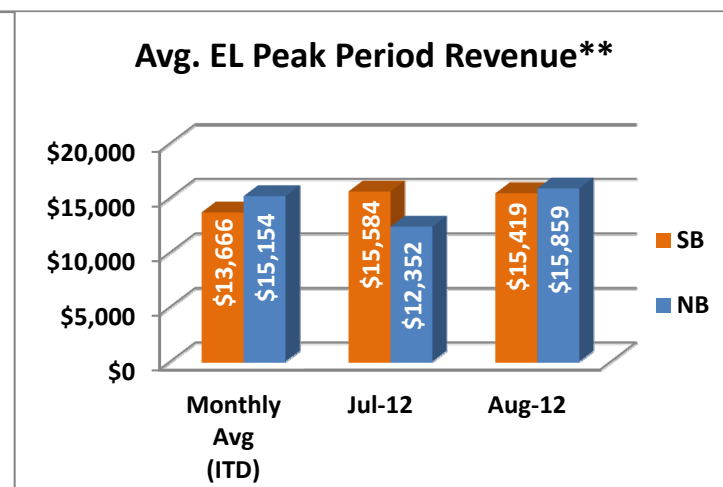
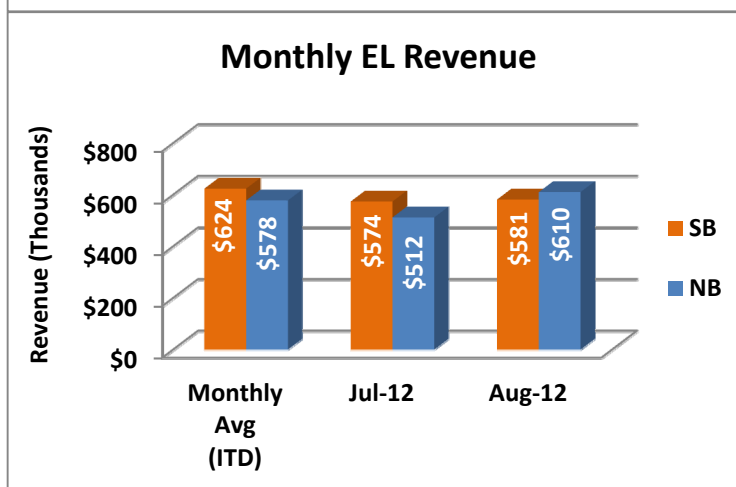
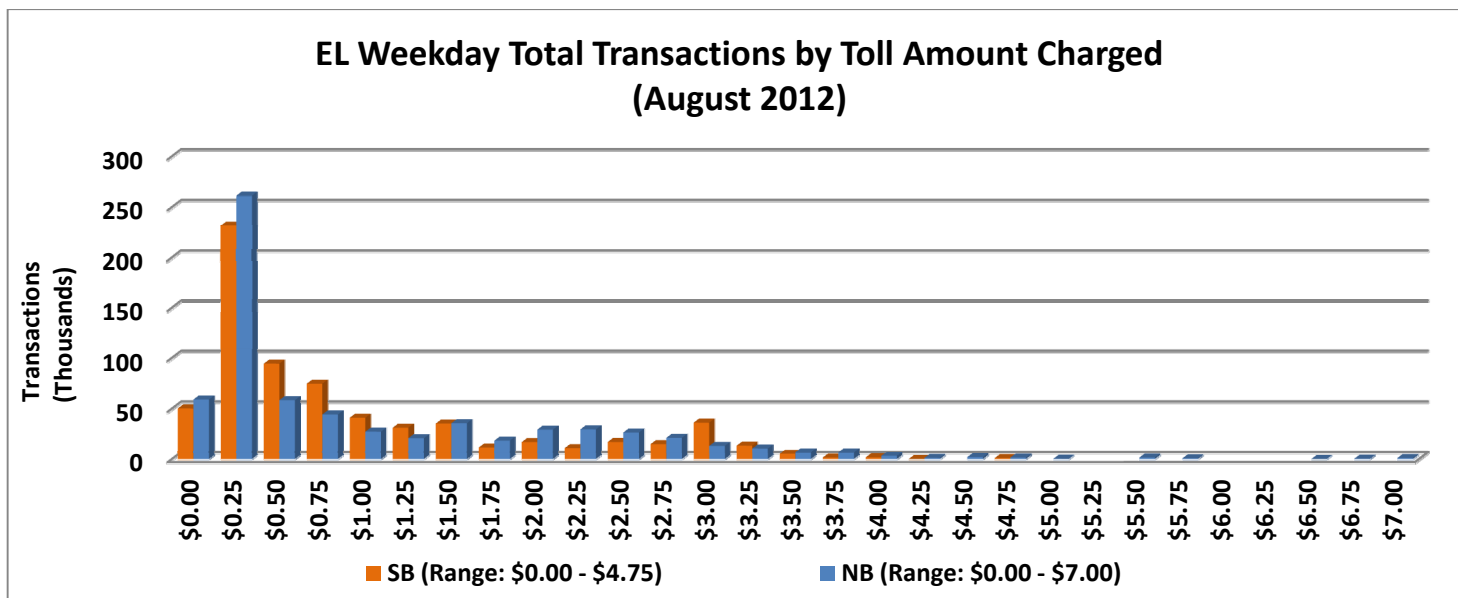


NOTE: ITD = Inception to Date



Revenue/Tolls Statistics

** Peak Period is defined as 6-9 AM (southbound) and 4-7 PM (northbound).

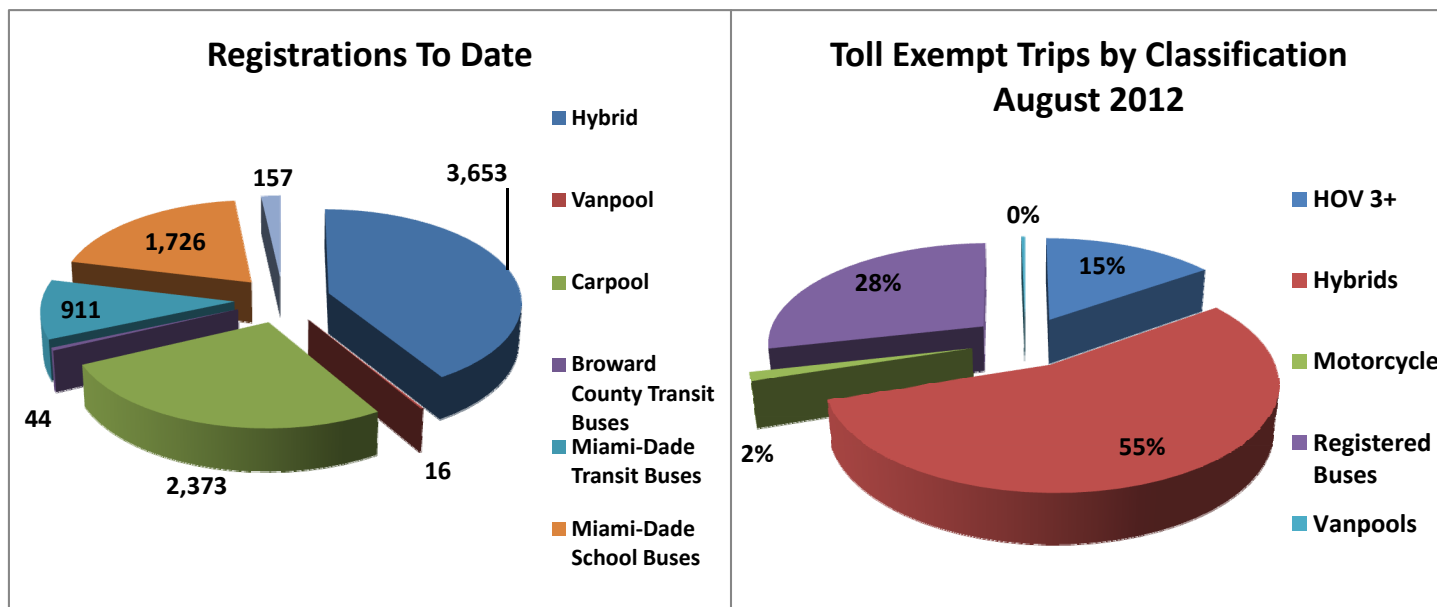


NOTE: ITD = Inception to Date



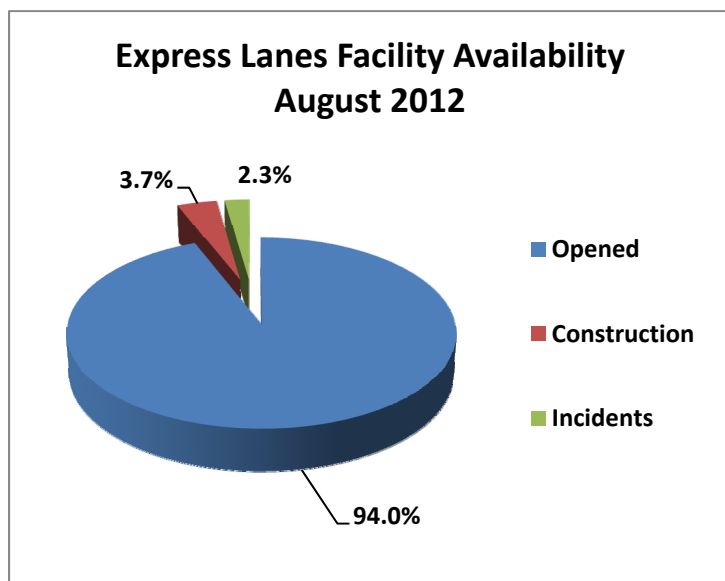
Registrations—Toll Exempt Trips

The total registrations through August 2012 increased to 8,880. The 37,165 Toll Exempt Trips for this month are shown by classification below.



*Note: a portion of the Vanpool data is included within Registered Buses.

Facility Availability



The entire 95 Express lanes (both directions) were open to motorists 94.0% of the time, while closed 3.7% due to 10 planned construction/maintenance events (each lasting 5 hours, 30 minutes in duration on average) and 2.3% due to 147 non-recurring events (each lasting just over 14 minutes in duration on average).