



## Summary of Monthly Operations – September 2012

### General

In total, the 95 Express Lanes:

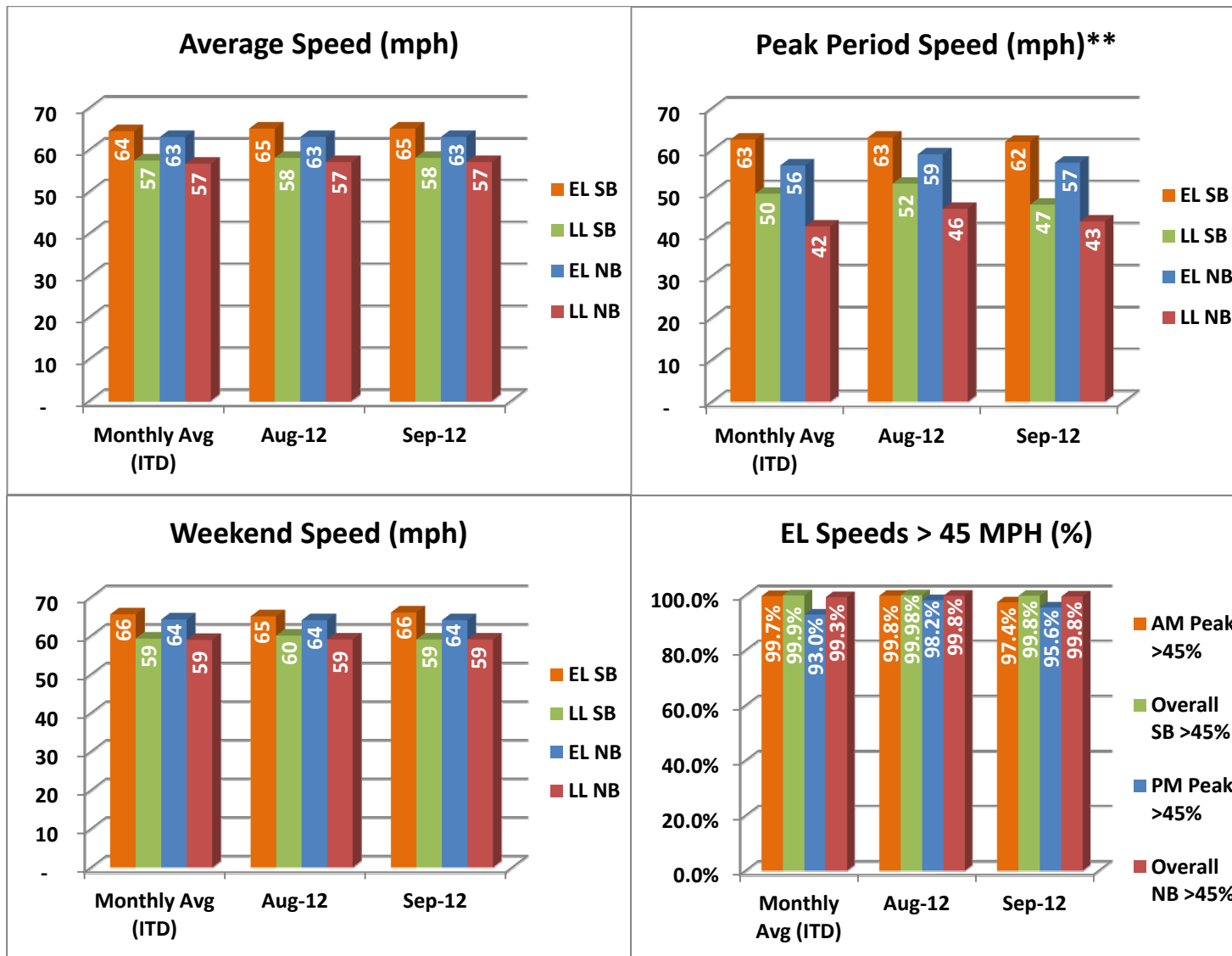
- ✓ Serviced 1,663,788 vehicle trips in September 2012 (15.7 million trips in 2012 to date), bringing the total since opening (December 5, 2008) to approximately 60.8 million trips.
- ✓ Had estimated monthly toll revenue of \$1.20 million in September 2012 (\$12.7 million in 2012 to date), bringing the total revenue to date to approximately \$47.2 million.
- ✓ Increased to a total of 8,904 registered vehicles, resulting in 32,924 toll exempt trips.

<u>September 2012 Statistics</u>	<u>Southbound</u>			<u>Northbound</u>		
<b>Total Trips</b>	840,702			823,086		
<b>Exempt Trips</b>	16,693			16,231		
<b>Revenue</b>						
	\$593,978			\$607,232		
<b>Tolls</b>						
- Range	\$0.00 - \$6.25			\$0.00 - \$7.00		
- Avg. Weekday	\$0.98			\$1.05		
- Avg. Peak Period**	\$1.69			\$2.37		
- Avg. Weekend	\$0.25			\$0.23		
- Avg. Off Peak	\$0.70			\$0.53		
- 85 <sup>th</sup> Percentile Weekday	\$2.25			\$2.25		
<b>Volume (veh)</b>						
	<b>EL</b>	<b>LL</b>		<b>EL</b>	<b>LL</b>	
- Avg. Weekday	32,265	104,179		31,237	101,817	
- Avg. Peak Period**	9,025	18,792		8,840	19,232	
<b>Speed (mph)</b>						
	<b>EL</b>	<b>LL</b>	<b>Δ</b>	<b>EL</b>	<b>LL</b>	<b>Δ</b>
- Avg. Overall	65	58	7	63	57	6
- Avg. Peak Period**	62	47	15	57	43	14
<b>Operated Above 45 MPH</b>						
	99.8%			99.5%		
<b>Remained Open to Motorists</b>						
	95.0%			93.8%		
<b>Closed due to Planned Construction</b>						
	3.0%			3.6%		
<b>Closed due to Non-recurring Events</b>						
	2.0%			2.6%		
<i>EL (Express Lanes); LL (Local Lanes)</i>						
<i>**Peak Period is defined as 6-9 AM (southbound) and 4-7 PM (northbound).</i>						



## Operations/Traffic Statistics - Speed Data

\*\* Peak Period is defined as 6-9 AM (southbound) and 4-7 PM (northbound).

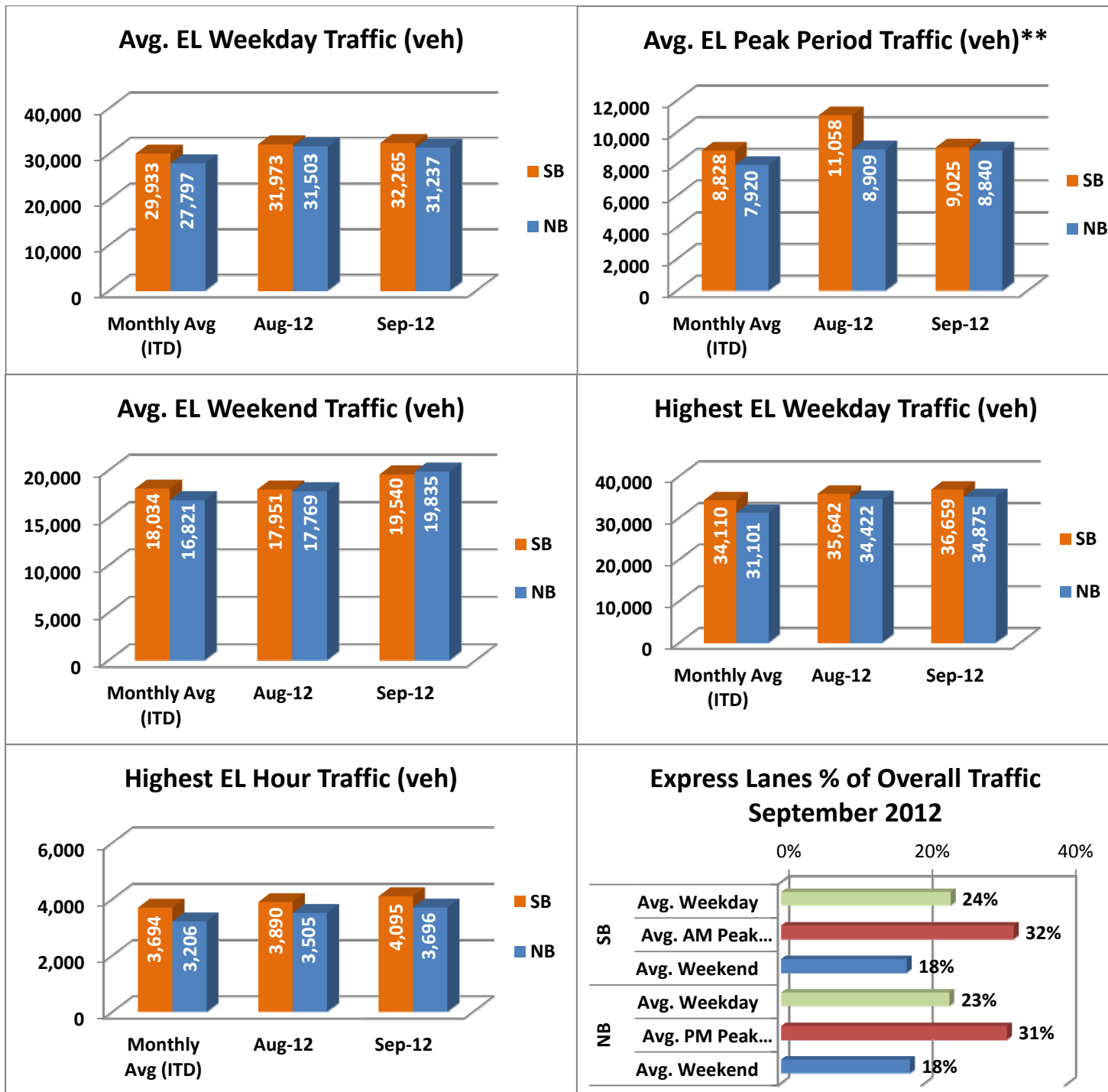


NOTE: ITD = Inception to Date



## Operations/Traffic Statistics - Volume Data

\*\* Peak Period is defined as 6-9 AM (southbound) and 4-7 PM (northbound).

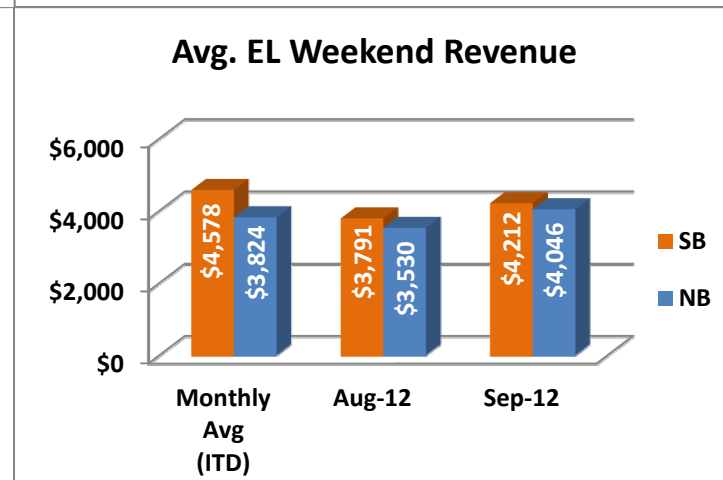
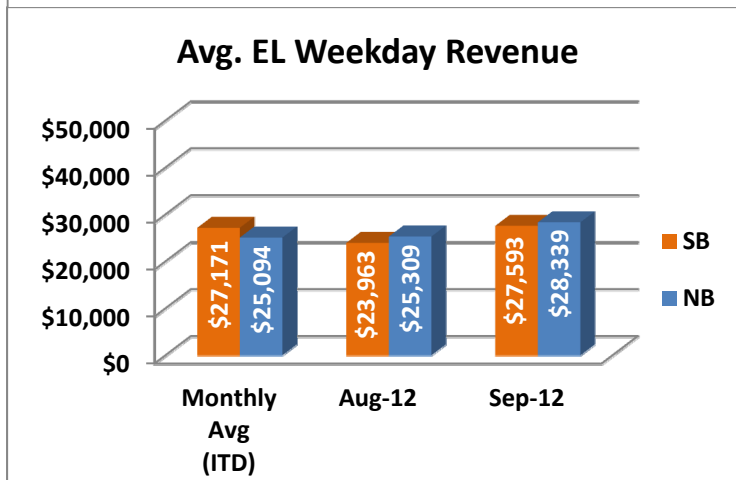
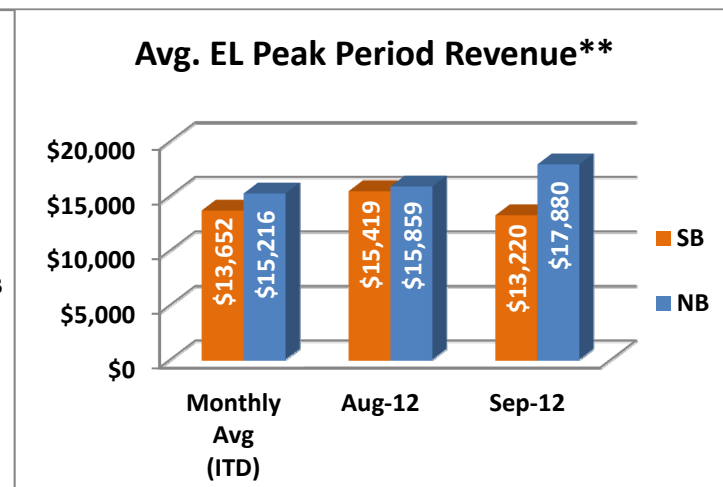
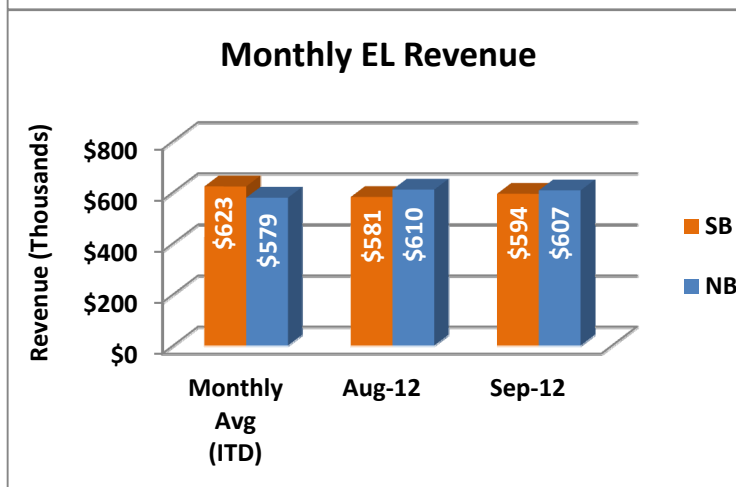
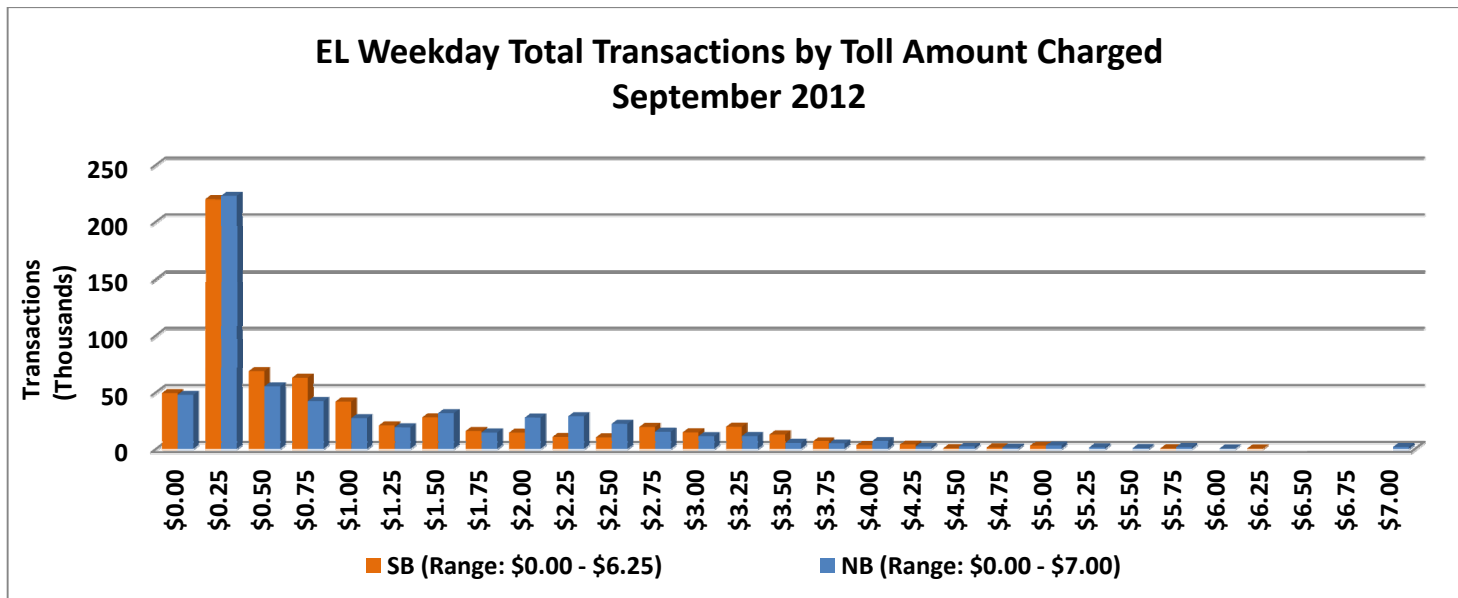


NOTE: ITD = Inception to Date



## Revenue/Tolls Statistics

\*\* Peak Period is defined as 6-9 AM (southbound) and 4-7 PM (northbound).

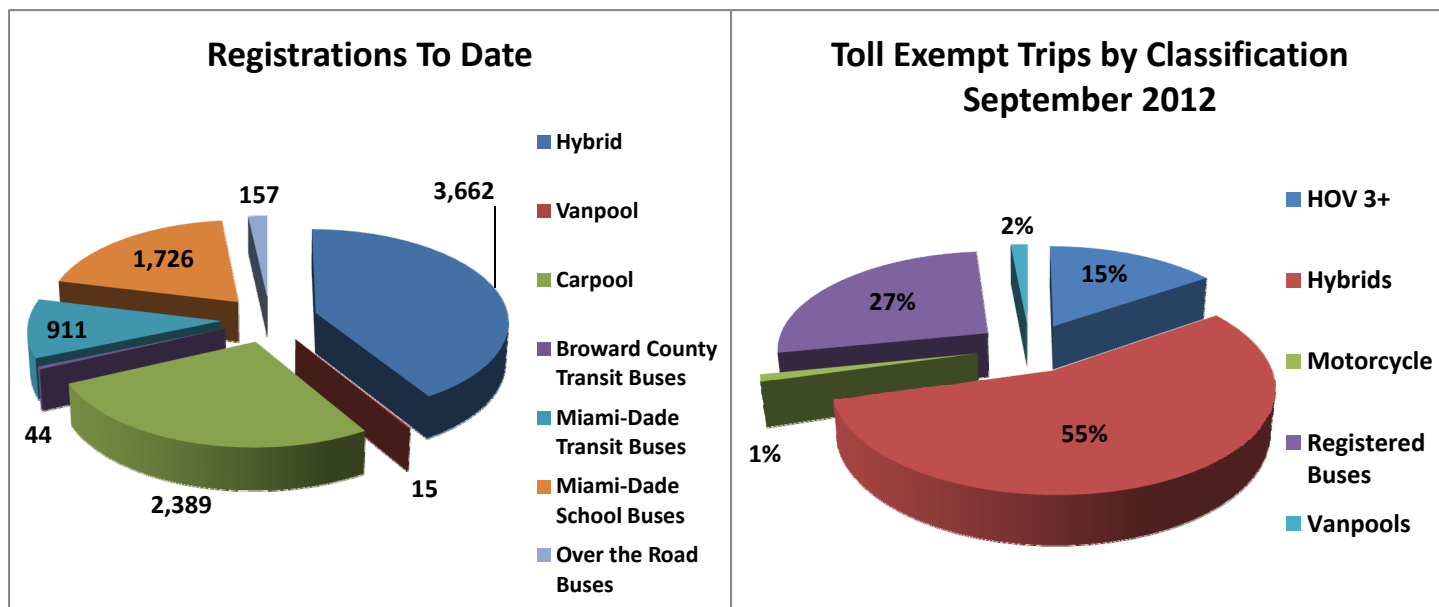


NOTE: ITD = Inception to Date

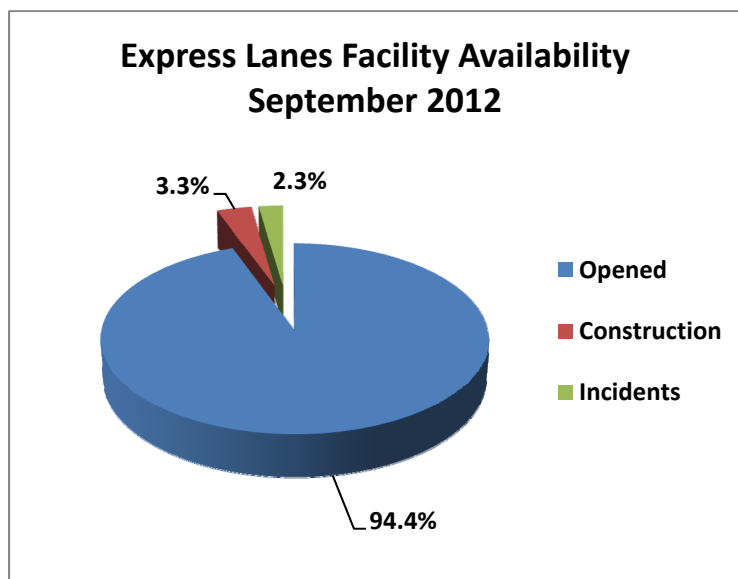


## Registrations—Toll Exempt Trips

The total registrations through September 2012 increased to 8,904. The 32,924 Toll Exempt Trips for this month are shown by classification below.



## Facility Availability



The entire 95 Express lanes (both directions) were open to motorists 94.4% of the time, while closed 3.3% due to 10 planned construction/maintenance events (each lasting 4 hours, 45 minutes in duration on average) and 2.3% due to 140 non-recurring events (each lasting just over 14 minutes in duration on average).