



Summary of Monthly Operations – October 2013

General

In total, the 95 Express Lanes:

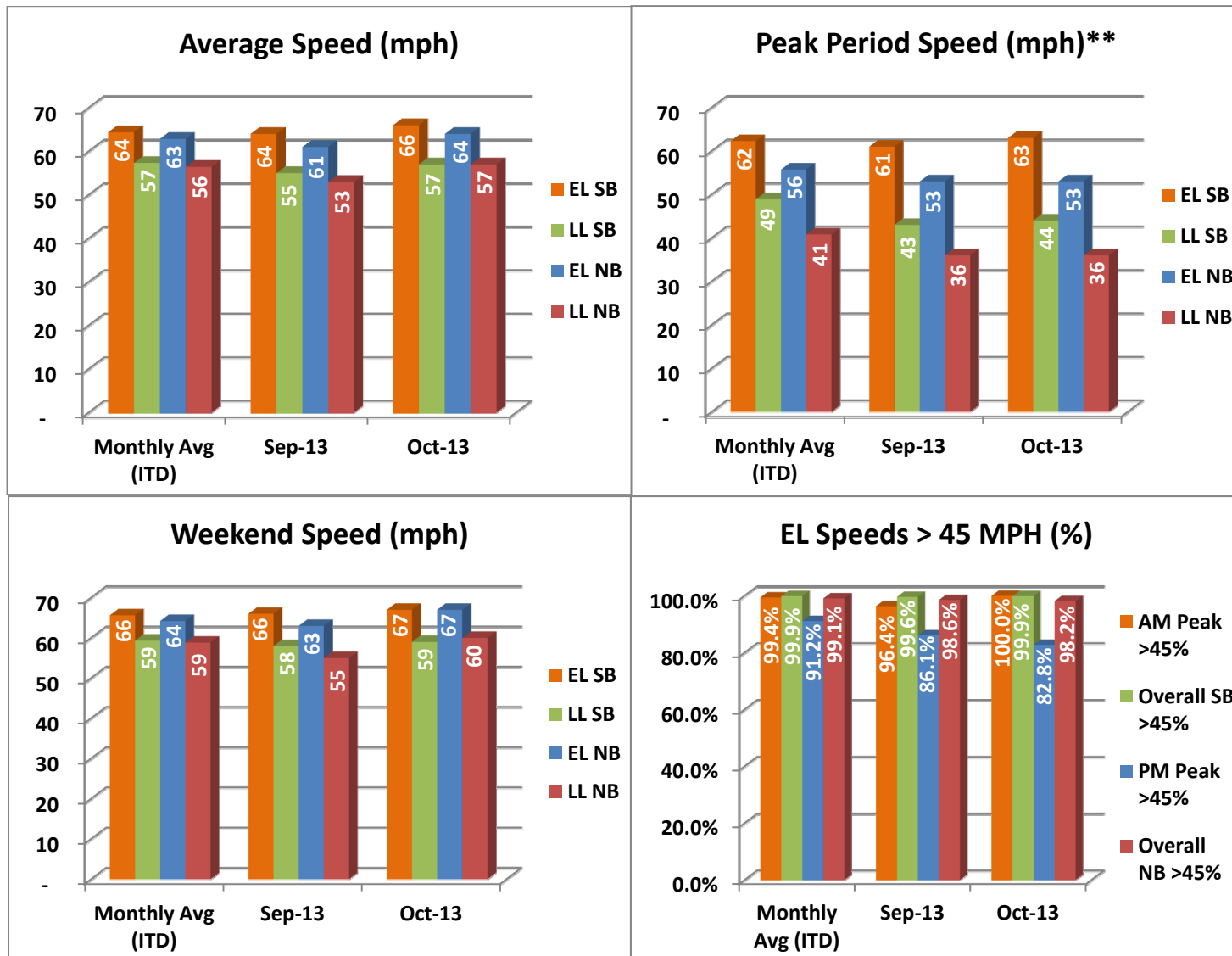
- ✓ Serviced 1,901,594 vehicle trips in October 2013 (18.4 million trips for year 2013 to date), bringing the total since opening (December 5, 2008) to approximately 84.5 million trips.
- ✓ Had estimated monthly toll revenue of \$1.60 million in October 2013 (\$16.3 million for year 2013 to date), bringing the total revenue to date to approximately \$67.9 million.
- ✓ Increased to a total of 9,013 registered vehicles, resulting in 48,235 toll exempt trips.

<u>October 2013 Statistics</u>	<u>Southbound</u>			<u>Northbound</u>		
Total Trips	975,787			925,807		
Exempt Trips	24,856			23,379		
Revenue						
	\$830,464			\$766,942		
Tolls						
- Range	\$0.00 - \$7.00			\$0.00 - \$7.00		
- Avg. Weekday	\$1.16			\$1.14		
- Avg. Peak Period**	\$2.05			\$2.66		
- Avg. Weekend	\$0.25			\$0.24		
- Avg. Off Peak	\$0.83			\$0.59		
- 85 th Percentile Weekday	\$2.75			\$2.25		
Volume (veh)						
	EL	LL		EL	LL	
- Avg. Weekday	34,925	105,977		32,916	100,677	
- Avg. Peak Period**	9,484	18,630		8,742	17,753	
Speed (mph)						
	EL	LL	Δ	EL	LL	Δ
- Avg. Overall	66	57	9	64	57	7
- Avg. Peak Period**	63	44	19	53	36	17
Operated Above 45 MPH						
	99.9%			98.2%		
Remained Open to Motorists						
	89.3%			89.5%		
Closed due to Planned Construction						
	6.6%			6.3%		
Closed due to Non-recurring Events						
	4.1%			4.2%		
<i>EL (Express Lanes); LL (Local Lanes)</i>						
<i>**Peak Period is defined as 6-9 AM (southbound) and 4-7 PM (northbound).</i>						



Operations/Traffic Statistics - Speed Data

** Peak Period is defined as 6-9 AM (southbound) and 4-7 PM (northbound).

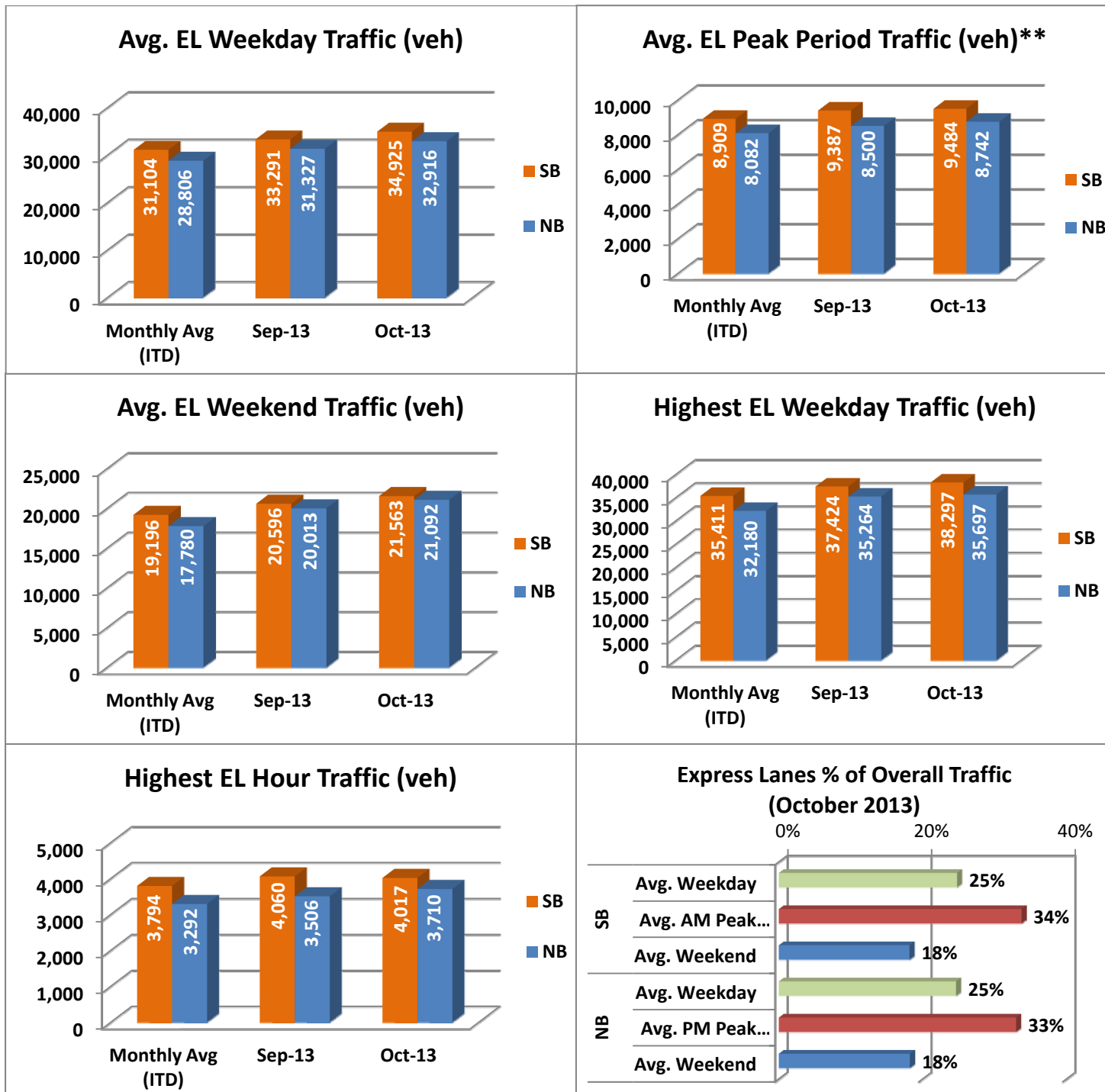


NOTE: ITD = Inception to Date



Operations/Traffic Statistics - Volume Data

** Peak Period is defined as 6-9 AM (southbound) and 4-7 PM (northbound).

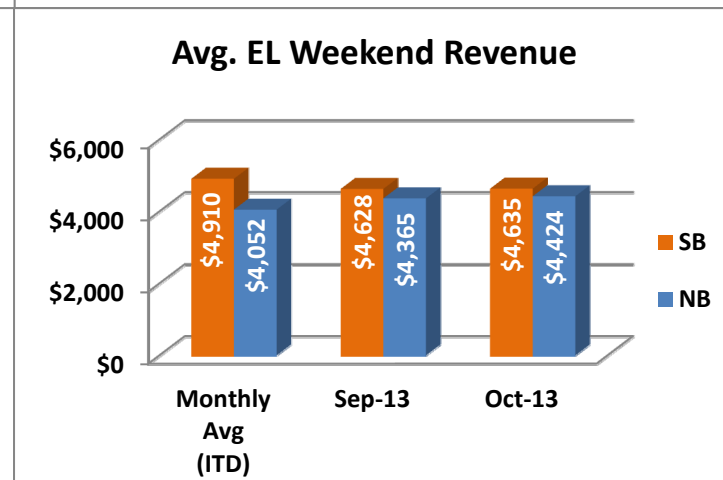
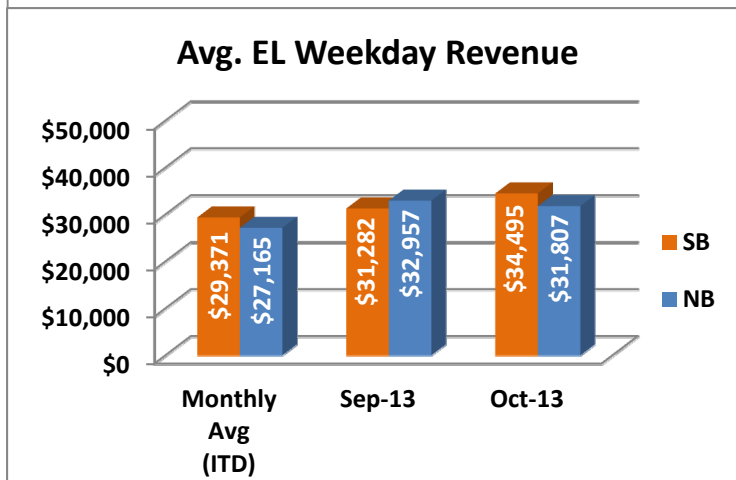
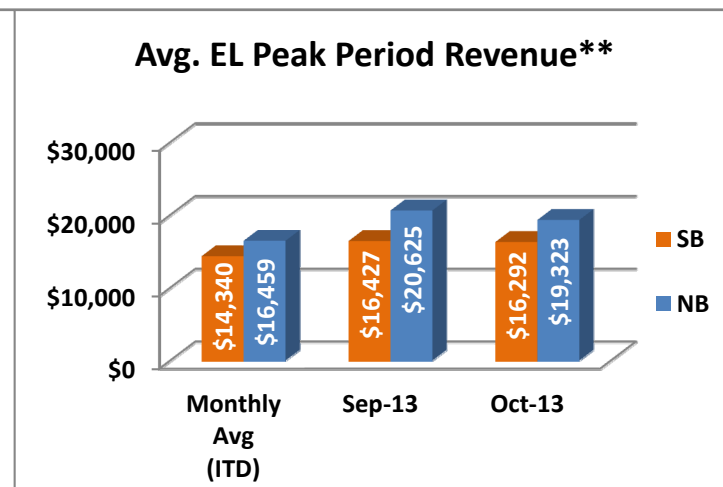
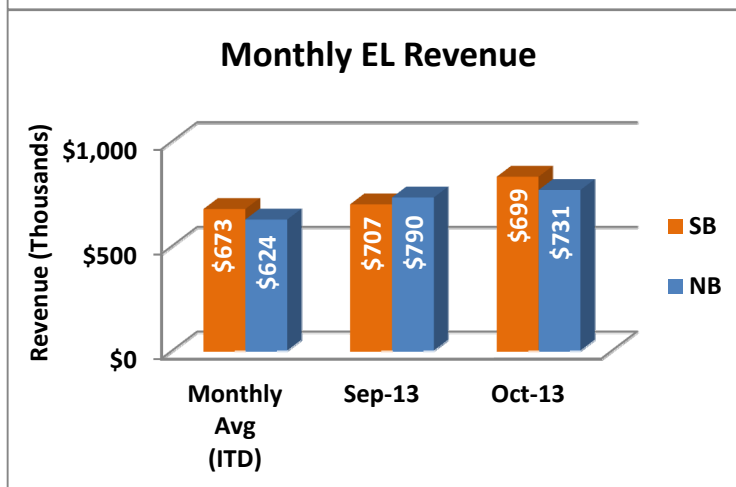
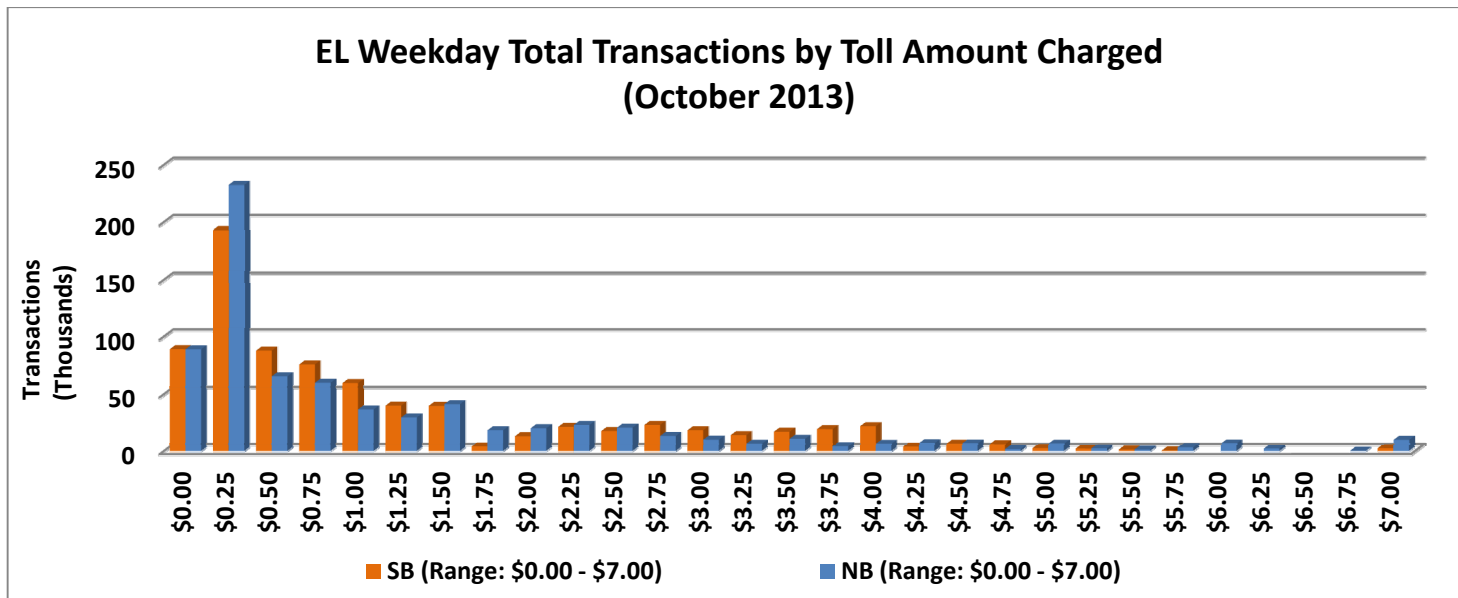


NOTE: ITD = Inception to Date



Revenue/Tolls Statistics

** Peak Period is defined as 6-9 AM (southbound) and 4-7 PM (northbound).

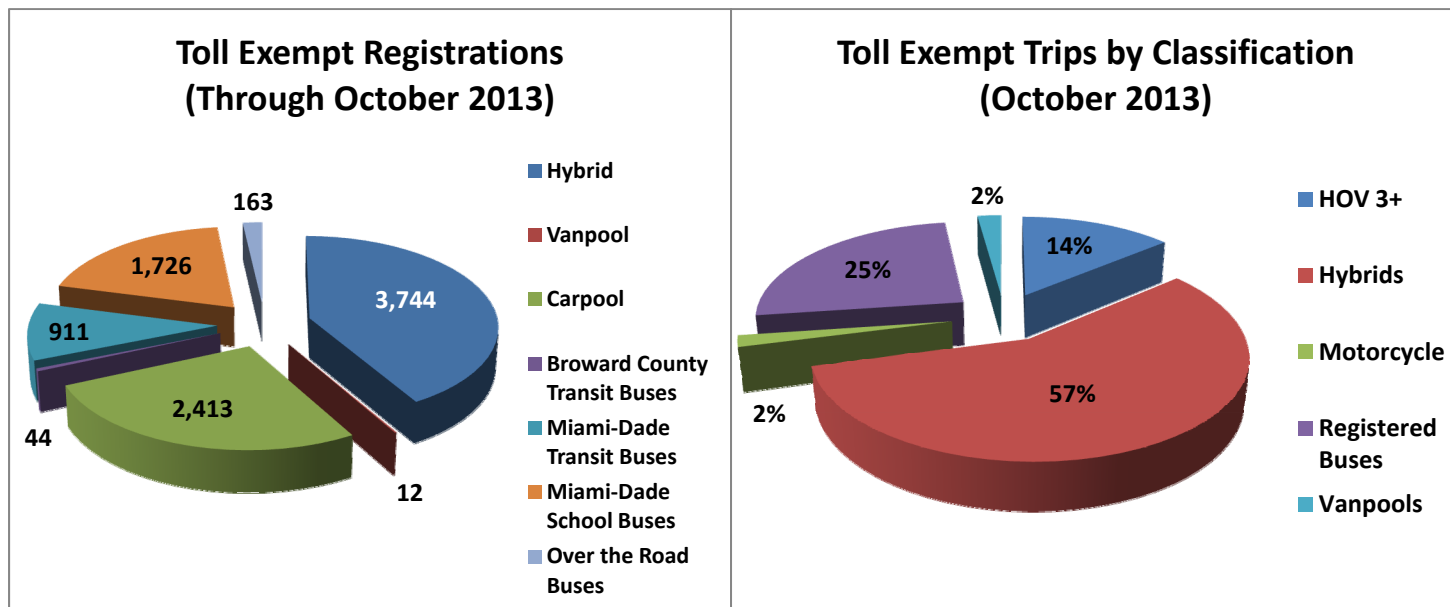


NOTE: ITD = Inception to Date

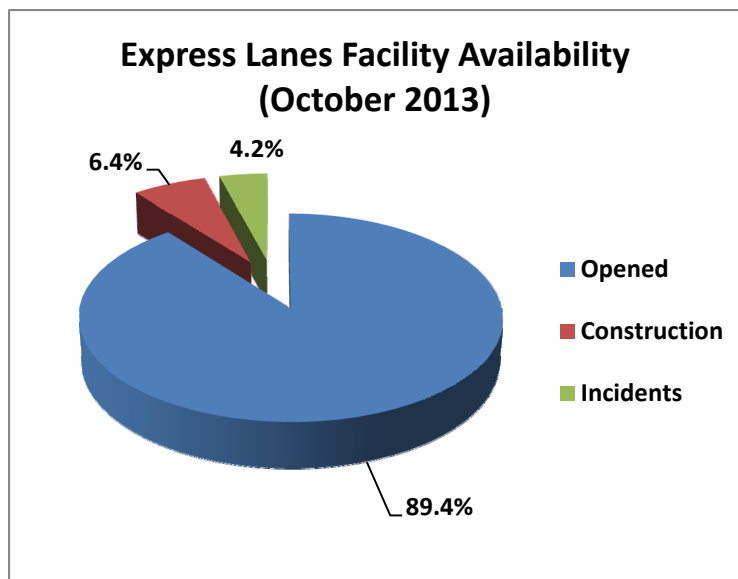


Registrations—Toll Exempt Trips

The total registrations through October 2013 increased to 9,013. The 48,235 Toll Exempt Trips for this month are shown by classification below.



Facility Availability



The entire 95 Express lanes (both directions) were open to motorists 89.4% of the time, while closed 6.4% due to 18 planned construction/maintenance events (each lasting approximately 5 hours, 18 minutes in duration, on average) and 4.2% due to 190 non-recurring events (each lasting approximately 19.5 minutes in duration, on average).