



Summary of Monthly Operations – November 2013

General

In total, the 95 Express Lanes:

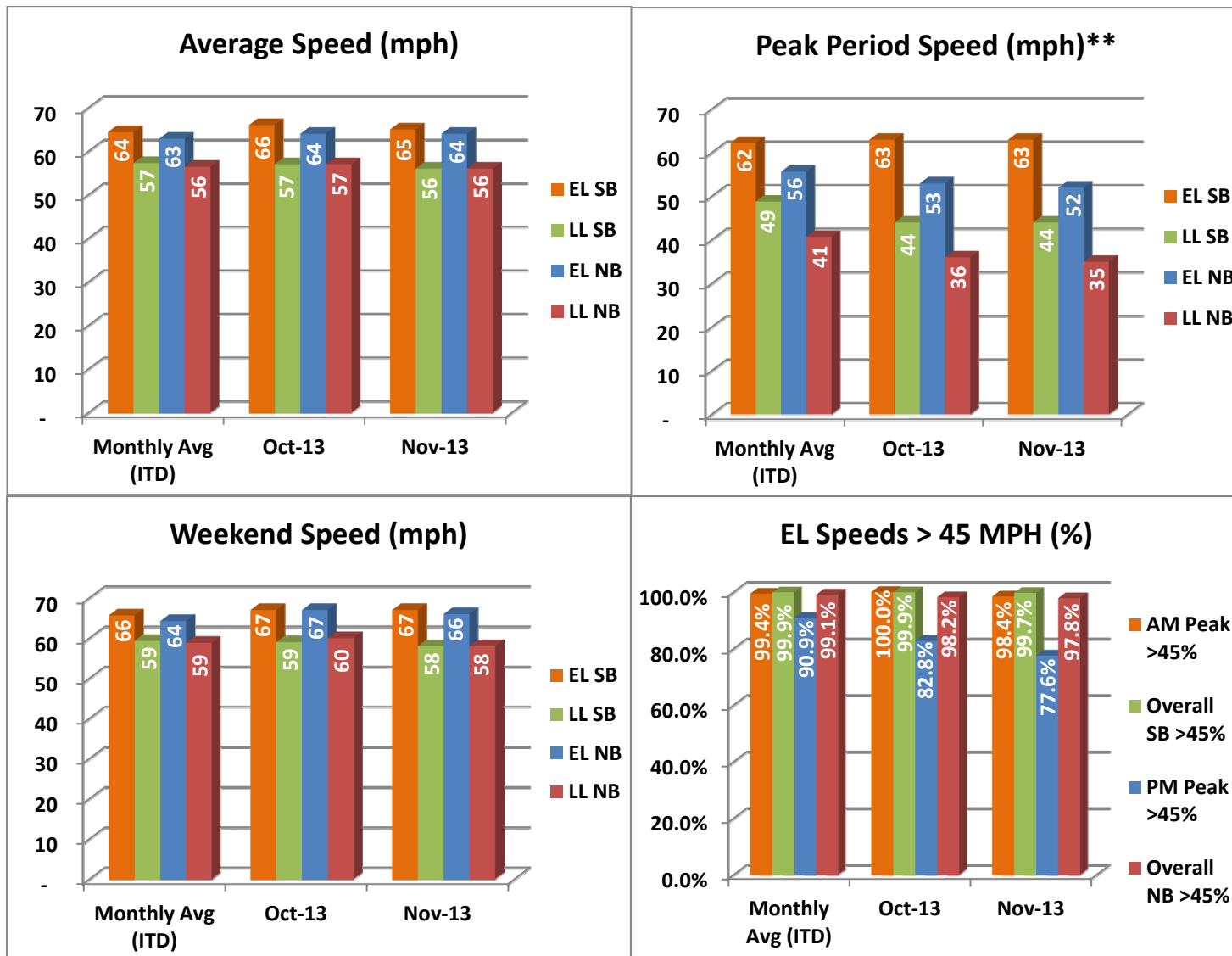
- ✓ Serviced 1,863,858 vehicle trips in November 2013 (20.2 million trips for year 2013 to date), bringing the total since opening (December 5, 2008) to approximately 86.4 million trips.
- ✓ Had estimated monthly toll revenue of \$1.65 million in November 2013 (\$18.0 million for year 2013 to date), bringing the total revenue to date to approximately \$69.5 million.
- ✓ Increased to a total of 9,020 registered vehicles, resulting in 42,486 toll exempt trips.

<u>November 2013 Statistics</u>	<u>Southbound</u>		<u>Northbound</u>			
Total Trips	969,386		894,472			
Exempt Trips	22,281		20,205			
Revenue						
	\$814,949		\$837,121			
Tolls						
- Range	\$0.00 - \$7.00		\$0.00 - \$7.00			
- Avg. Weekday	\$1.19		\$1.35			
- Avg. Peak Period**	\$1.73		\$3.33			
- Avg. Weekend	\$0.36		\$0.33			
- Avg. Off Peak	\$0.82		\$0.66			
- 85 th Percentile Weekday	\$2.75		\$3.00			
Volume (veh)						
	EL	LL	EL	LL		
- Avg. Weekday	35,026	104,518	32,683	99,837		
- Avg. Peak Period**	9,263	17,585	8,523	17,130		
Speed (mph)						
	EL	LL	Δ	EL	LL	Δ
- Avg. Overall	65	56	9	64	56	6
- Avg. Peak Period**	63	44	19	52	35	17
Operated Above 45 MPH						
	99.7%		97.8%			
Remained Open to Motorists						
	91.1%		89.4%			
Closed due to Planned Construction						
	4.5%		6.9%			
Closed due to Non-recurring Events						
	4.4%		3.0%			
<i>EL (Express Lanes); LL (Local Lanes)</i>						
<i>**Peak Period is defined as 6-9 AM (southbound) and 4-7 PM (northbound).</i>						



Operations/Traffic Statistics - Speed Data

** Peak Period is defined as 6-9 AM (southbound) and 4-7 PM (northbound).

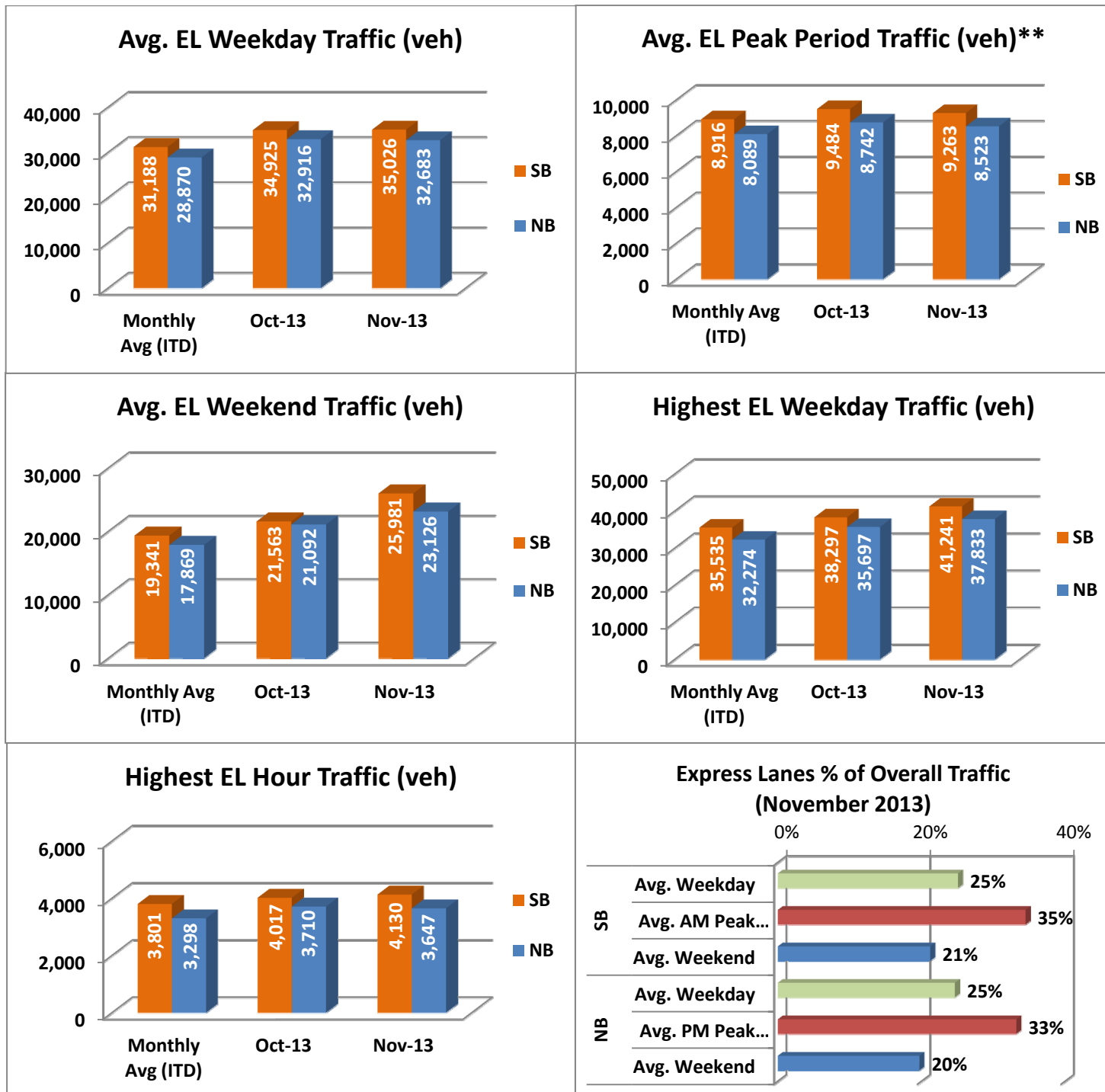


NOTE: ITD = Inception to Date



Operations/Traffic Statistics - Volume Data

** Peak Period is defined as 6-9 AM (southbound) and 4-7 PM (northbound).

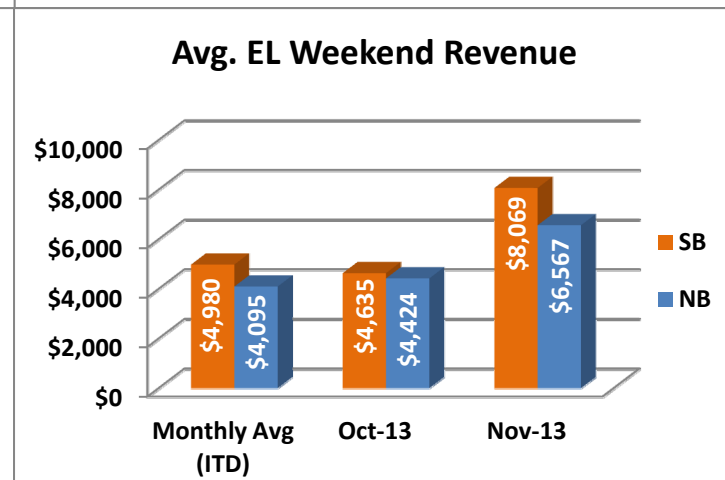
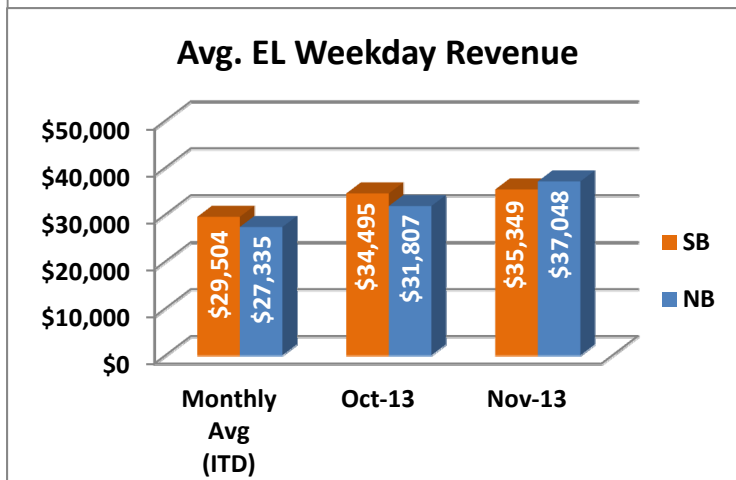
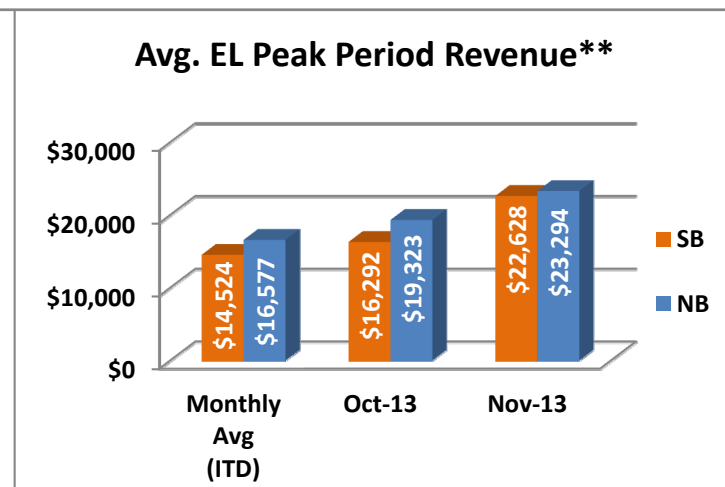
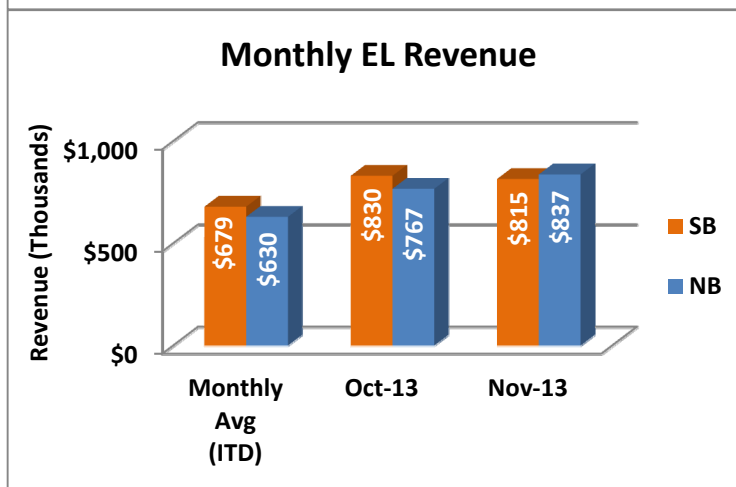
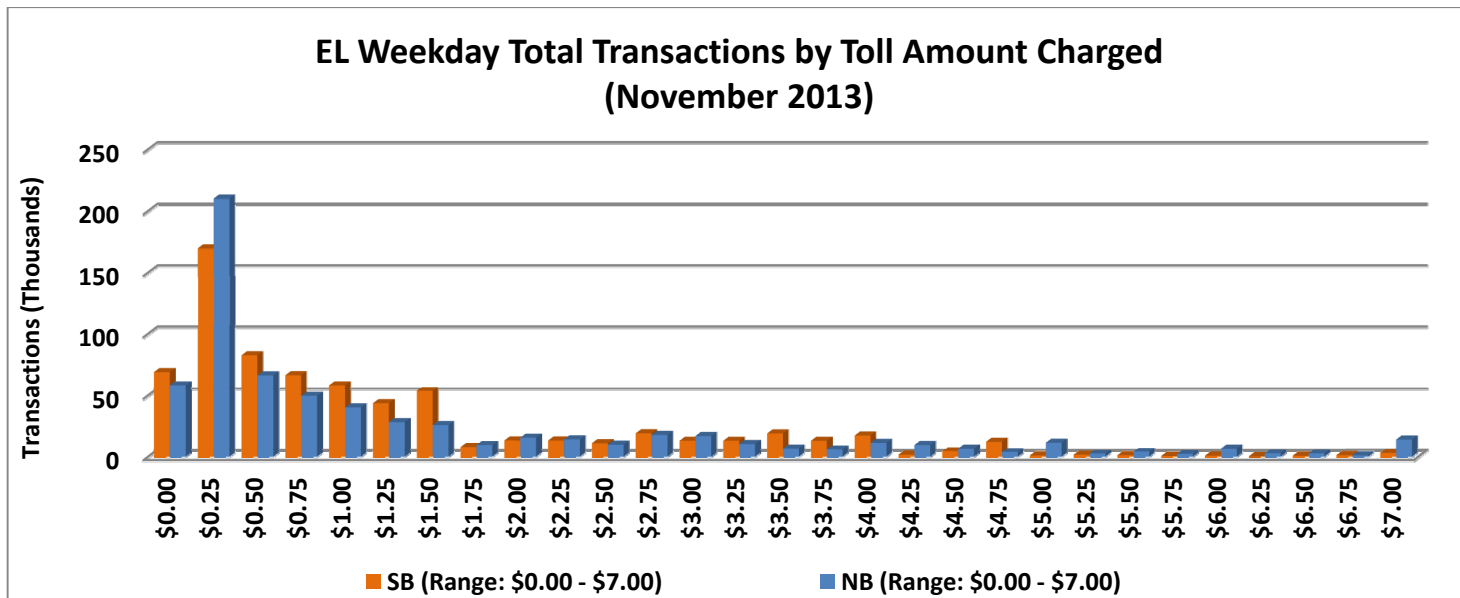


NOTE: ITD = Inception to Date



Revenue/Tolls Statistics

** Peak Period is defined as 6-9 AM (southbound) and 4-7 PM (northbound).

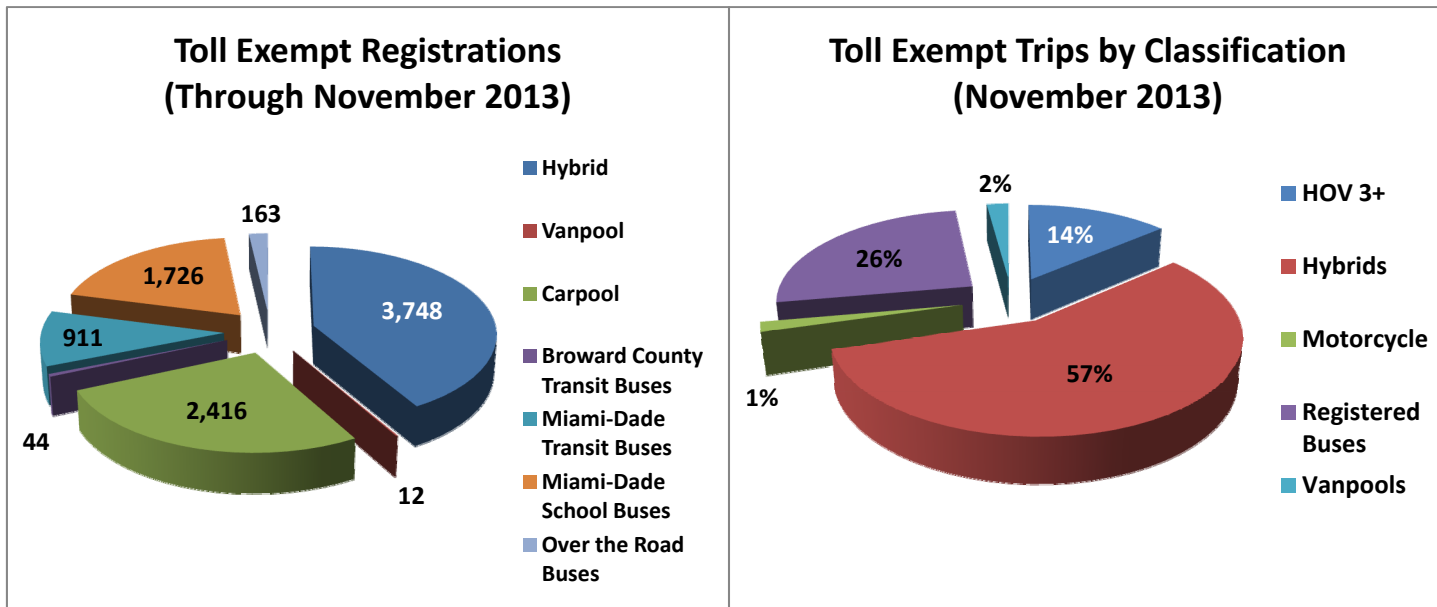


NOTE: ITD = Inception to Date

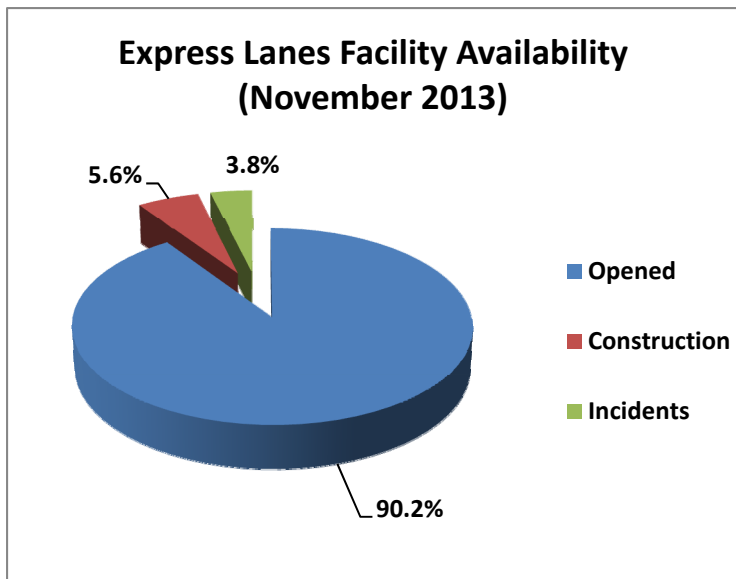


Registrations—Toll Exempt Trips

The total registrations through November 2013 increased to 9,020. The 42,486 Toll Exempt Trips for this month are shown by classification below.



Facility Availability



The entire 95 Express lanes (both directions) were open to motorists 90.2% of the time, while closed 5.6% due to 15 planned construction/maintenance events (each lasting approximately 5 hours, 29 minutes in duration, on average) and 3.8% due to 157 non-recurring events (each lasting approximately 20.5 minutes in duration, on average).