

95 Express Monthly Operations Report – April 2015

General

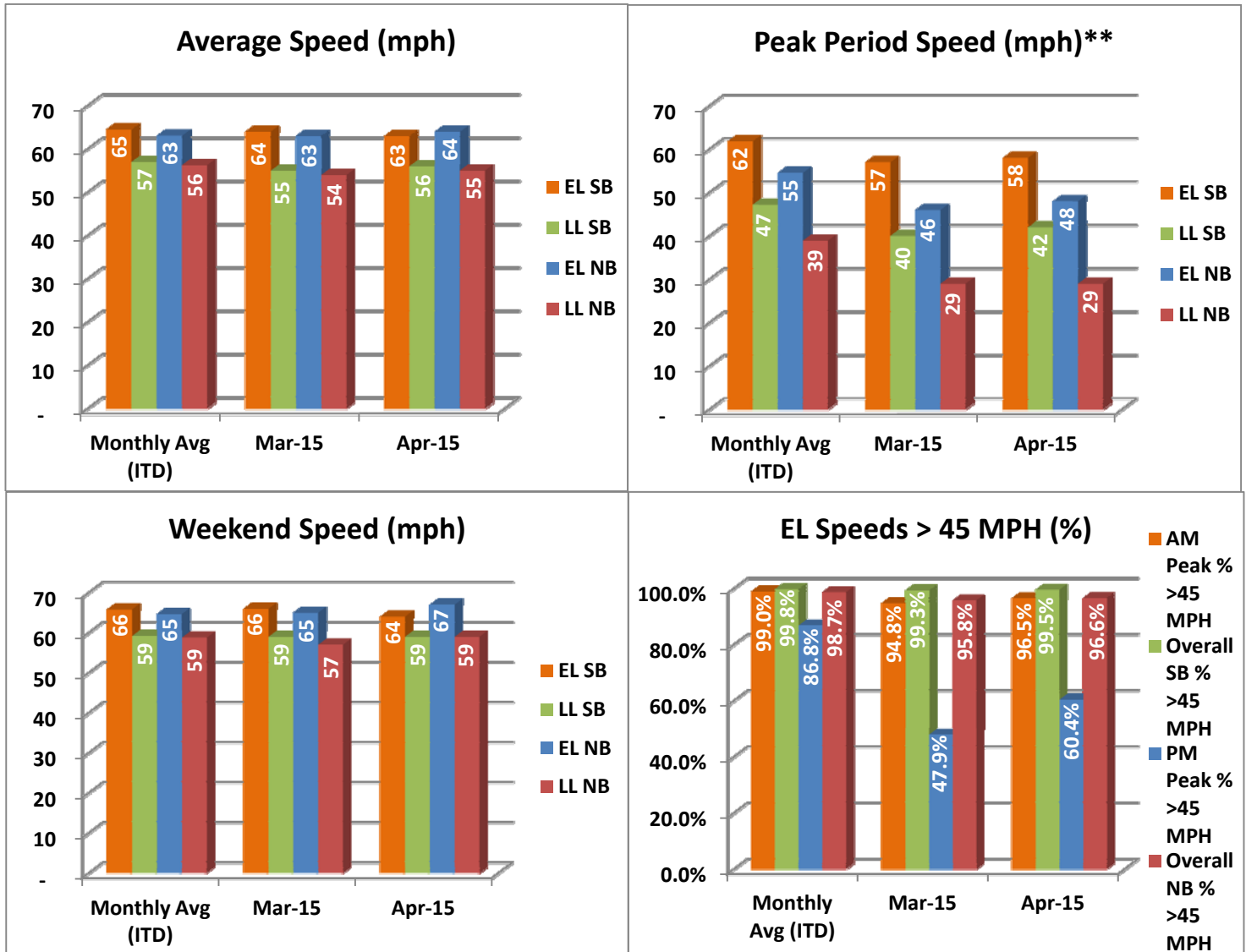
In total, the 95 Express Lanes:

- ✓ Serviced 1,846,675 vehicle trips in April 2015 (7.5 million trips in 2015), bringing the total since opening (December 5, 2008) to approximately 116.6 million trips.
- ✓ Had estimated monthly toll revenue of \$2.55 million in April 2015 (\$10.2 million in 2015), bringing the total revenue to date to approximately \$104.3 million.
- ✓ Increased to a total of 9,191 registered vehicles, resulting in 61,974 toll exempt trips.

<u>April 2015 Statistics</u>	<u>Southbound</u>		<u>Northbound</u>			
Total Trips	937,089		909,586			
Exempt Trips	32,512		29,462			
Revenue						
	\$1,194,429		\$1,353,206			
Tolls						
- Range	\$0.00 - \$10.50		\$0.00 - \$10.50			
- Avg. Weekday	\$1.66		\$2.03			
- Avg. Peak Period**	\$2.78		\$5.31			
- Avg. Weekend	\$0.62		\$0.56			
- Avg. Off Peak	\$1.29		\$1.21			
- 85 th Percentile Weekday	\$3.25		\$3.25			
Volume (veh)						
	EL	LL	EL	LL		
- Avg. Weekday	34,417	105,643	32,0881	102,264		
- Avg. Peak Period**	9,580	17,041	6,994	16,376		
Speed (mph)						
	EL	LL	Δ	EL	LL	Δ
- Avg. Overall	63	56	7	64	55	9
- Avg. Peak Period**	58	42	16	48	29	19
Operated Above 45 MPH						
	99.5%		96.6%			
Remained Open to Motorists						
	79.1%		87.3%			
Closed due to Planned Construction						
	16.2%		6.3%			
Closed due to Non-recurring Events						
	4.7%		6.4%			
<i>EL (Express Lanes); LL (Local Lanes); **Peak Period is defined as 6-9 AM (southbound) and 4-7 PM (northbound).</i>						

Operations/Traffic Statistics - Speed Data

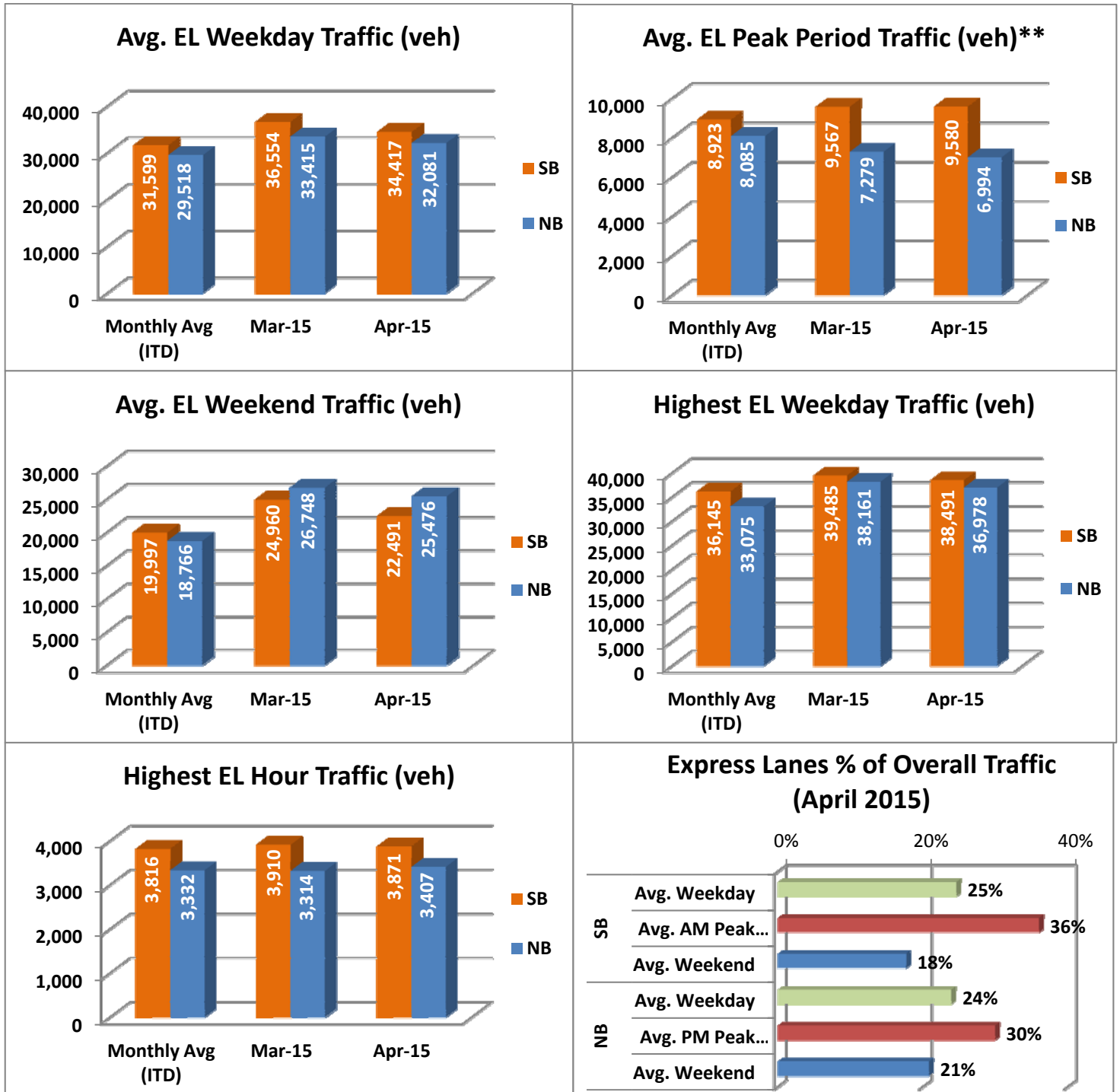
** Peak Period is defined as 6-9 AM (southbound) and 4-7 PM (northbound).



NOTE: ITD = Inception to Date; EL = Express Lanes; LL = Local Lanes

Operations/Traffic Statistics - Volume Data

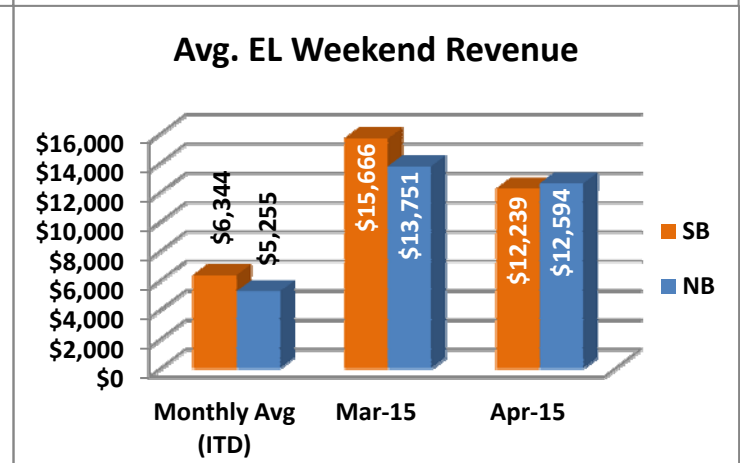
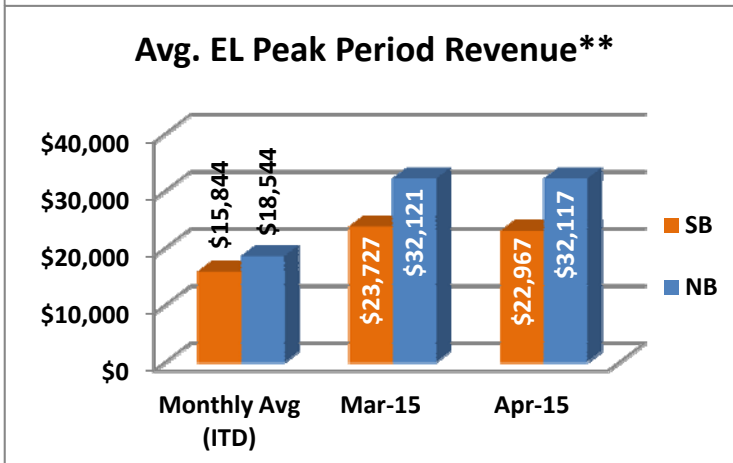
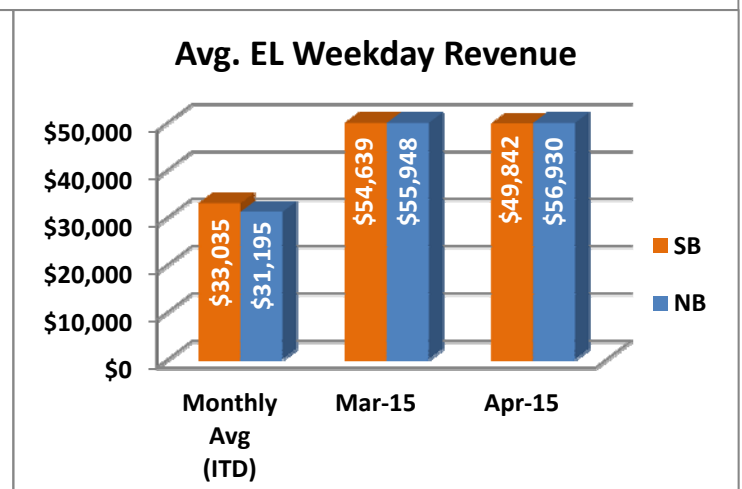
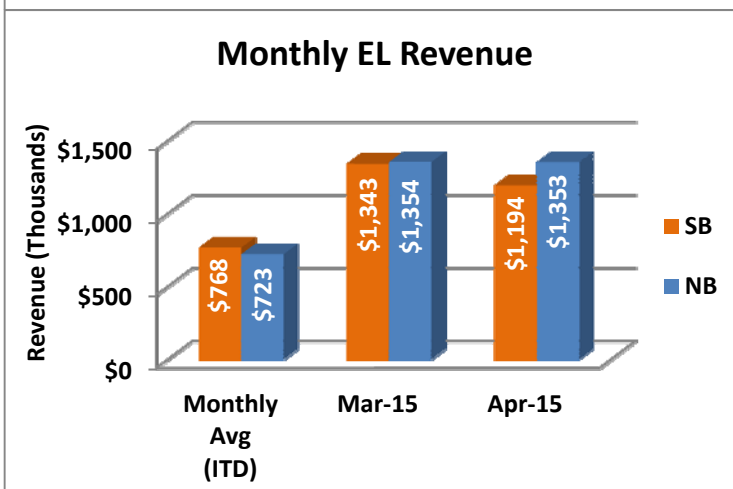
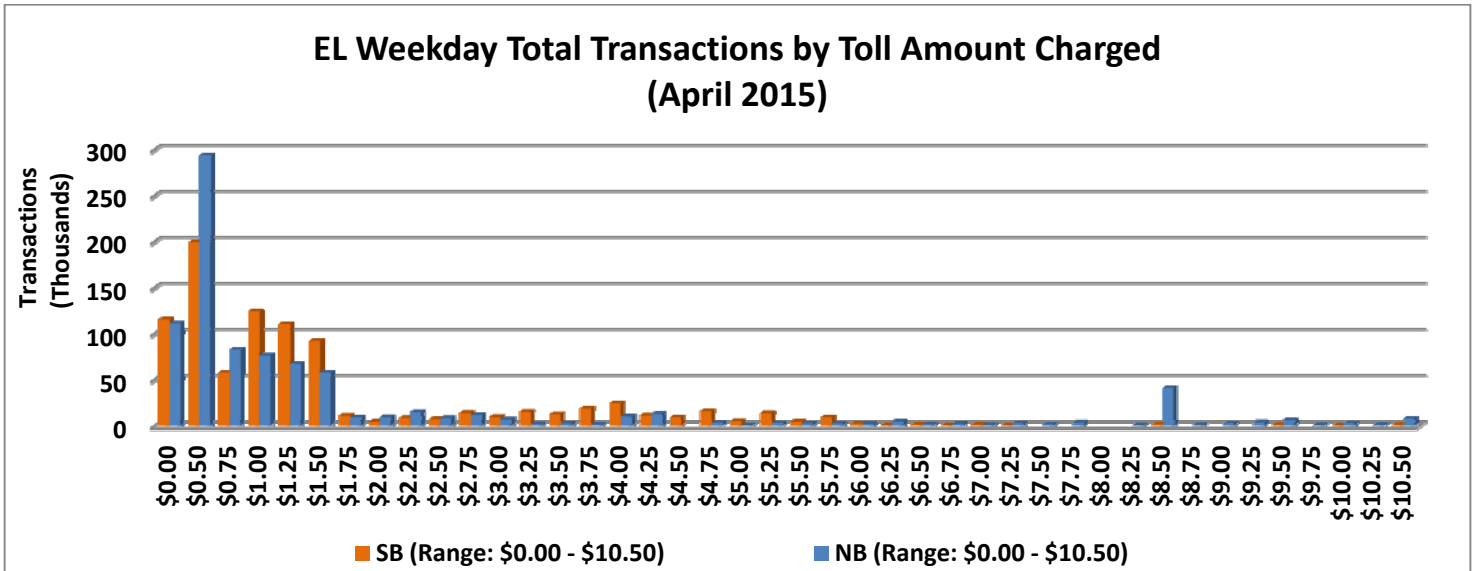
** Peak Period is defined as 6-9 AM (southbound) and 4-7 PM (northbound).



NOTE: ITD = Inception to Date

Revenue/Tolls Statistics

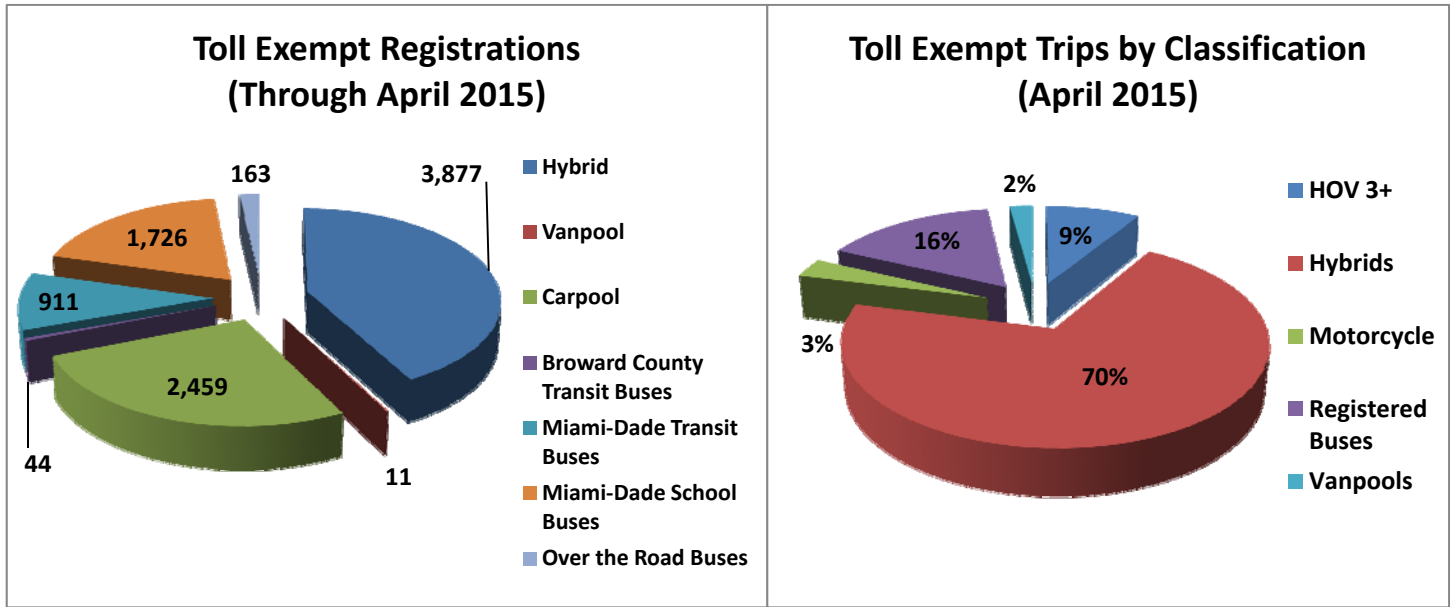
** Peak Period is defined as 6-9 AM (southbound) and 4-7 PM (northbound).



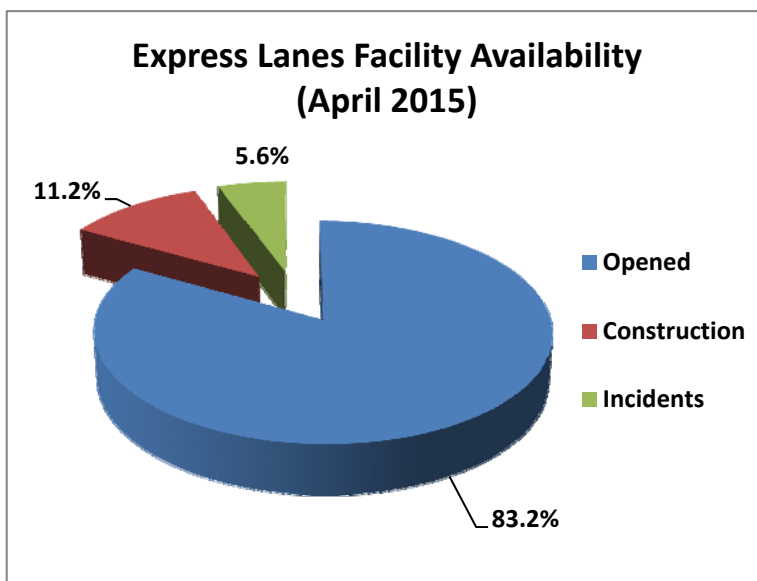
NOTE: ITD = Inception to Date

Registrations—Toll Exempt Trips

The total registrations through April 2015 decreased to 9,191. The 61,974 Toll Exempt Trips for this month are shown by classification below.



Facility Availability



The entire 95 Express lanes (both directions) were open to motorists 83.2% of the time, while closed 11.2% due to 26 planned construction/ maintenance events (each lasting approximately 6 hours, 13 minutes in duration, on average) and 5.6% due to 229 non-recurring events (each lasting approximately 21.0 minutes in duration, on average).