

95 Express Monthly Operations Report – July 2015

General

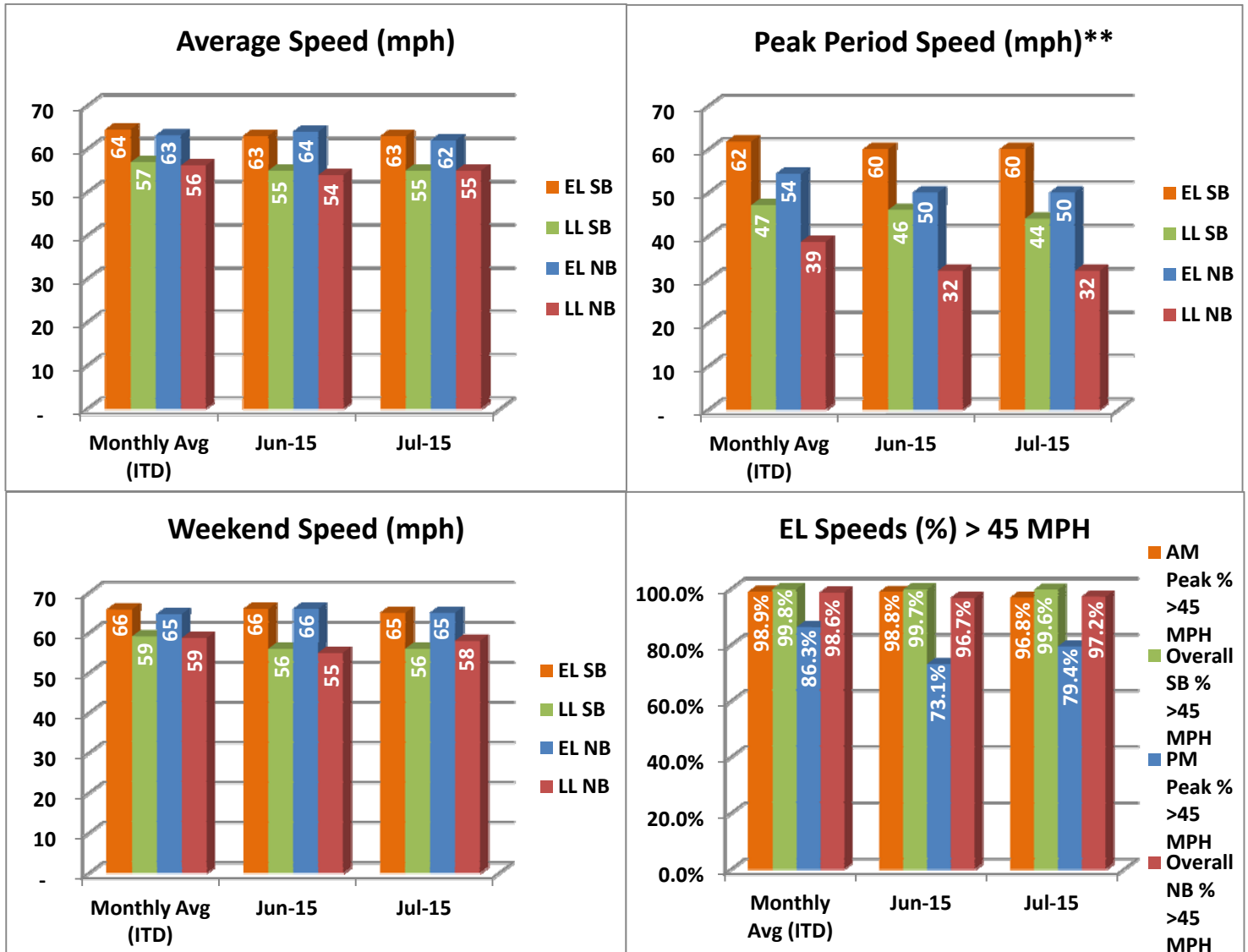
In total, the 95 Express Lanes:

- ✓ Serviced 1,832,809 vehicle trips in July 2015 (12.9 million trips in 2015), bringing the total since opening (December 5, 2008) to approximately 122.0 million trips.
- ✓ Had estimated monthly toll revenue of \$2.35 million in July 2015 (\$17.2 million in 2015), bringing the total revenue to date to approximately \$111.3 million.
- ✓ Increased to a total of 9,334 registered vehicles, resulting in 62,138 toll exempt trips.

<u>July 2015 Statistics</u>	<u>Southbound</u>			<u>Northbound</u>		
Total Trips	966,483			866,326		
Exempt Trips	32,861			29,277		
Revenue						
	\$1,127,122			\$1,222,709		
Tolls						
- Range	\$0.00 - \$10.50			\$0.00 - \$10.50		
- Avg. Weekday	\$1.51			\$1.88		
- Avg. Peak Period**	\$2.53			\$4.50		
- Avg. Weekend	\$0.52			\$0.54		
- Avg. Off Peak	\$1.19			\$1.08		
- 85 th Percentile Weekday	\$3.00			\$3.25		
Volume (veh)						
	EL	LL		EL	LL	
- Avg. Weekday	34,397	105,782		30,467	99,406	
- Avg. Peak Period**	9,053	17,877		7,574	16,975	
Speed (mph)						
	EL	LL	Δ	EL	LL	Δ
- Avg. Overall	63	55	8	62	55	7
- Avg. Peak Period**	60	44	16	50	32	18
Operated Above 45 MPH						
	99.6%			97.2%		
Remained Open to Motorists						
	87.3%			76.4%		
Closed due to Planned Construction						
	8.7%			19.1%		
Closed due to Non-recurring Events						
	4.0%			4.5%		
<i>EL (Express Lanes); LL (Local Lanes); **Peak Period is defined as 6-9 AM (southbound) and 4-7 PM (northbound).</i>						

Operations/Traffic Statistics - Speed Data

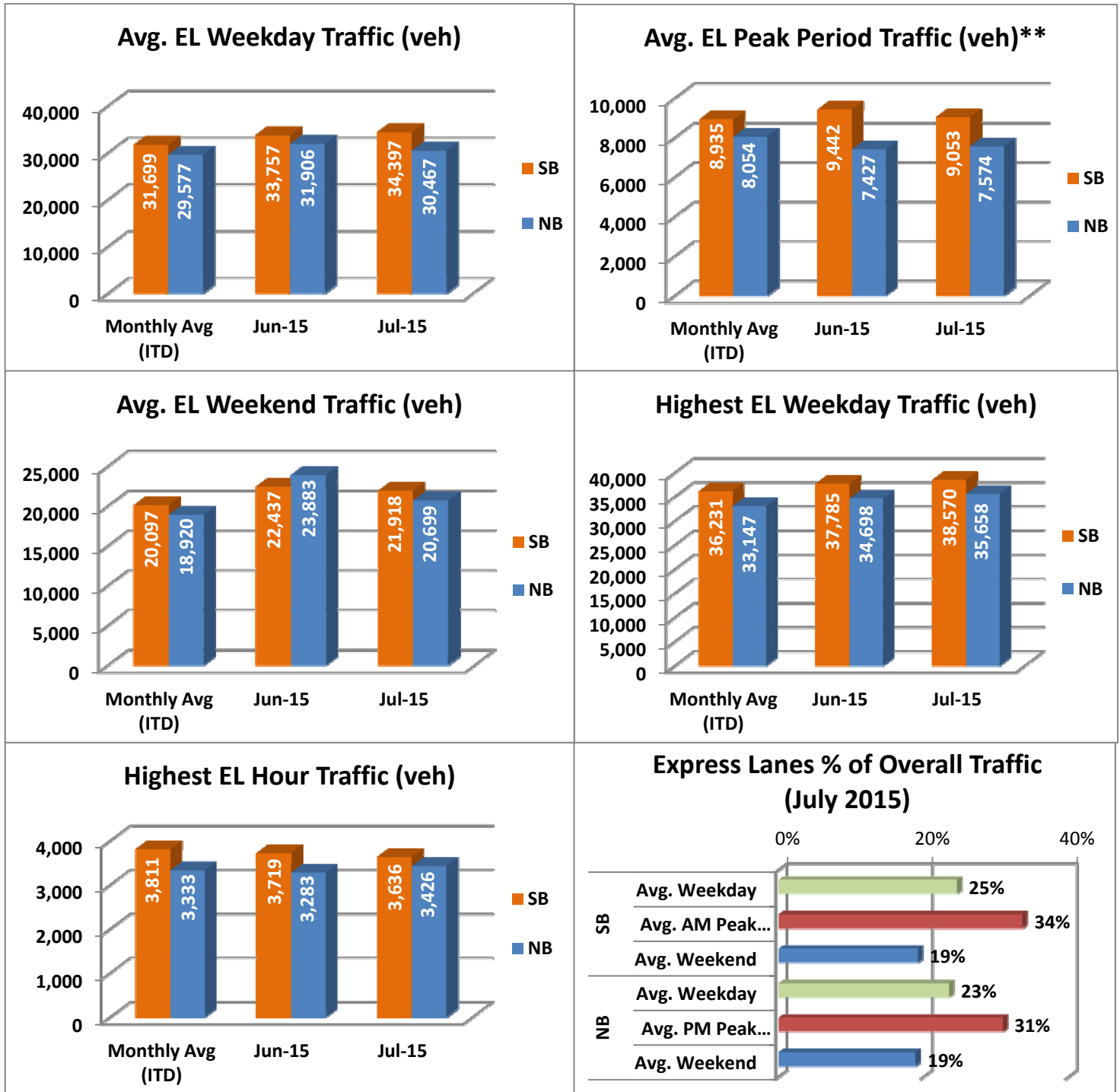
** Peak Period is defined as 6-9 AM (southbound) and 4-7 PM (northbound).



NOTE: ITD = Inception to Date; EL = Express Lanes; LL = Local Lanes

Operations/Traffic Statistics - Volume Data

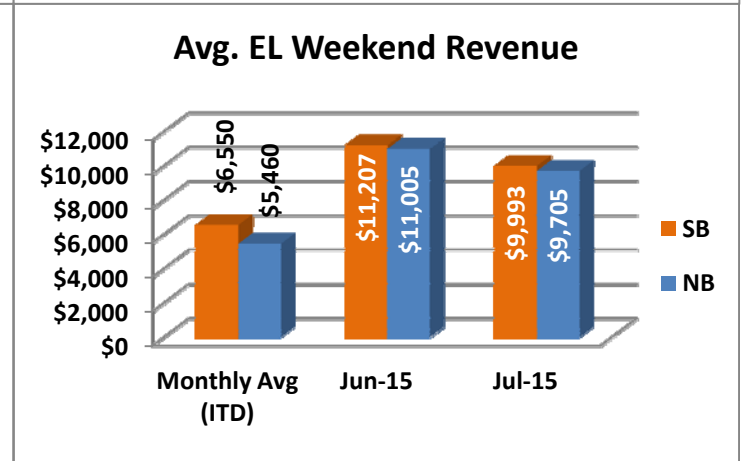
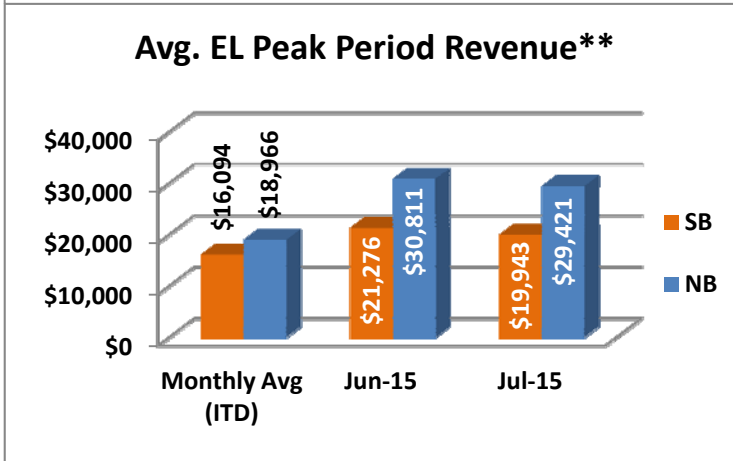
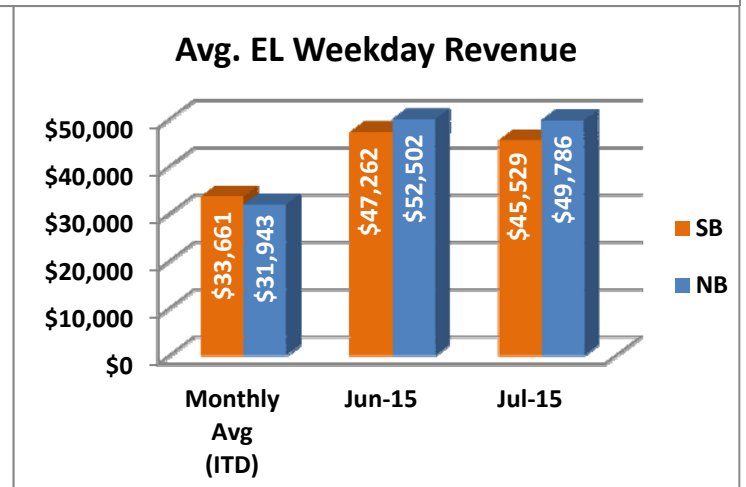
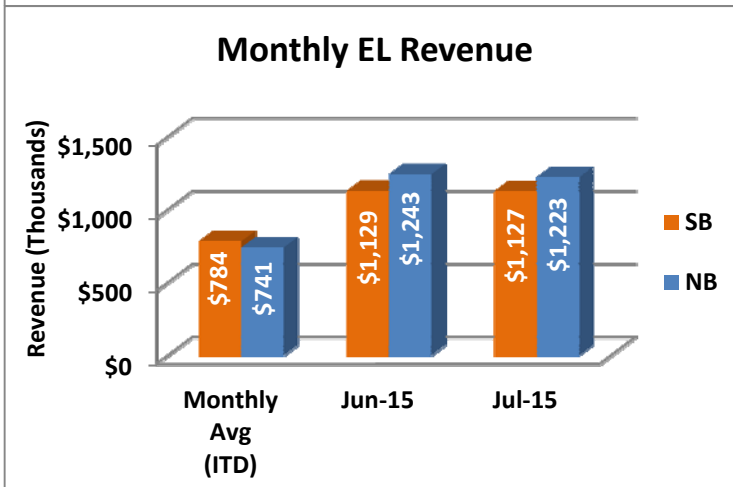
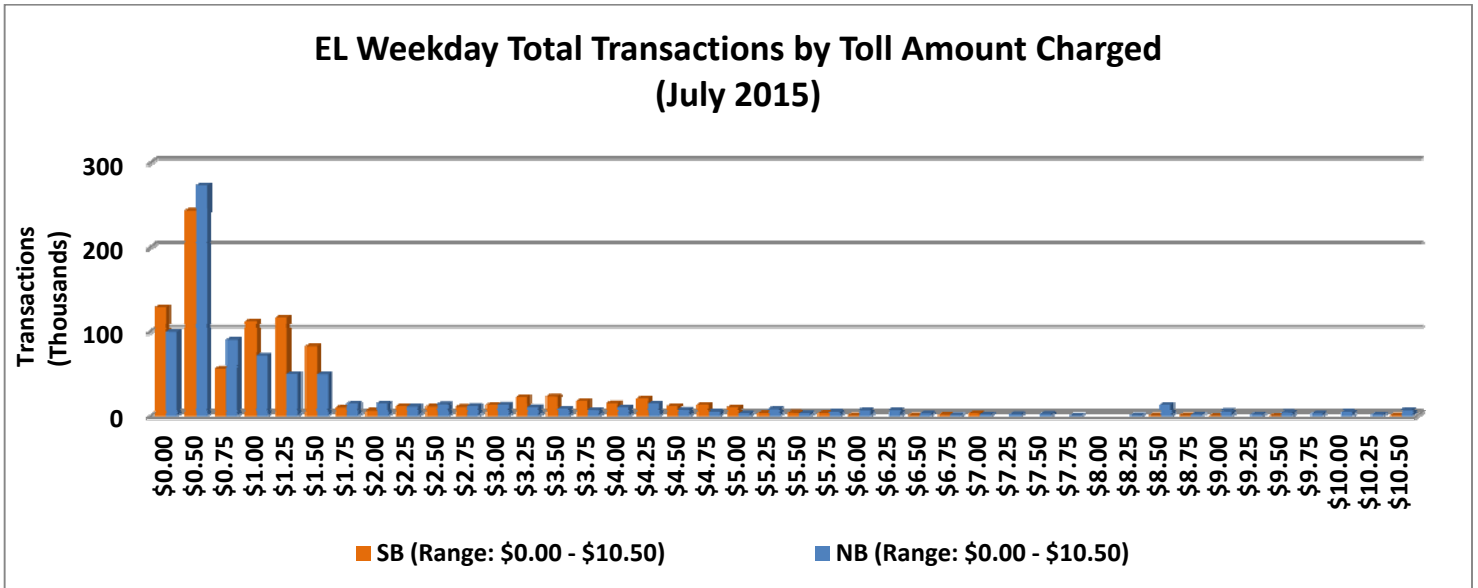
** Peak Period is defined as 6-9 AM (southbound) and 4-7 PM (northbound).



NOTE: ITD = Inception to Date

Revenue/Tolls Statistics

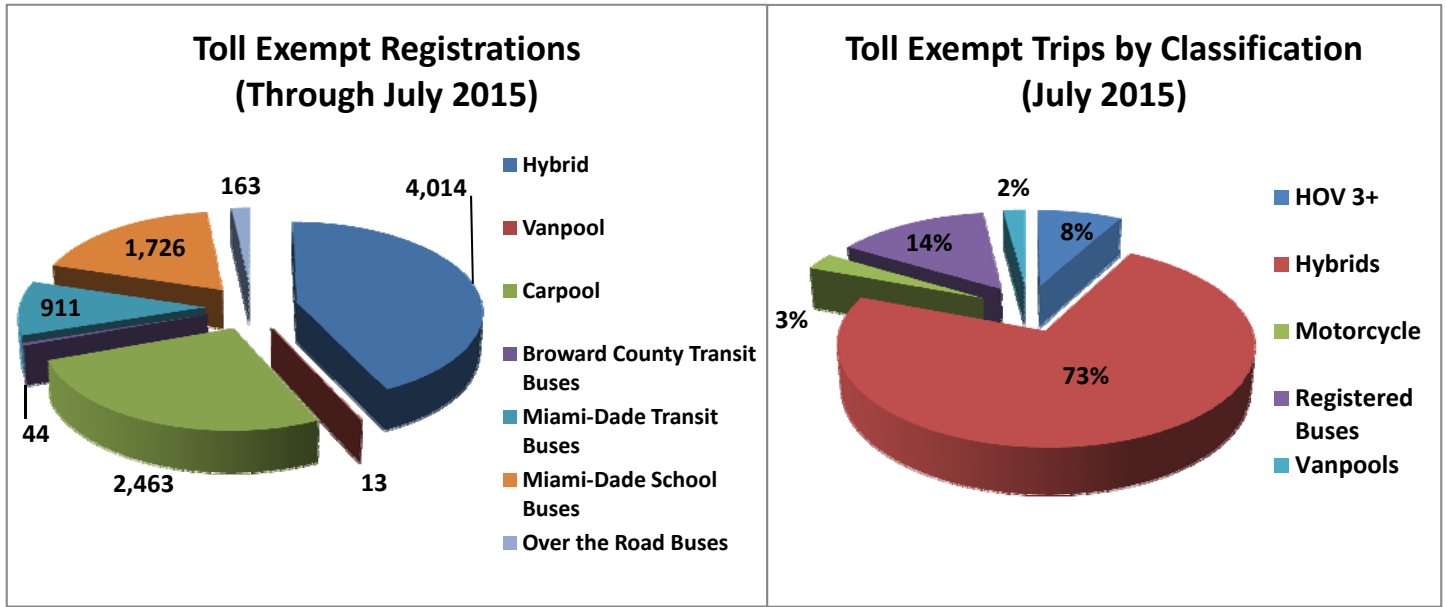
** Peak Period is defined as 6-9 AM (southbound) and 4-7 PM (northbound).



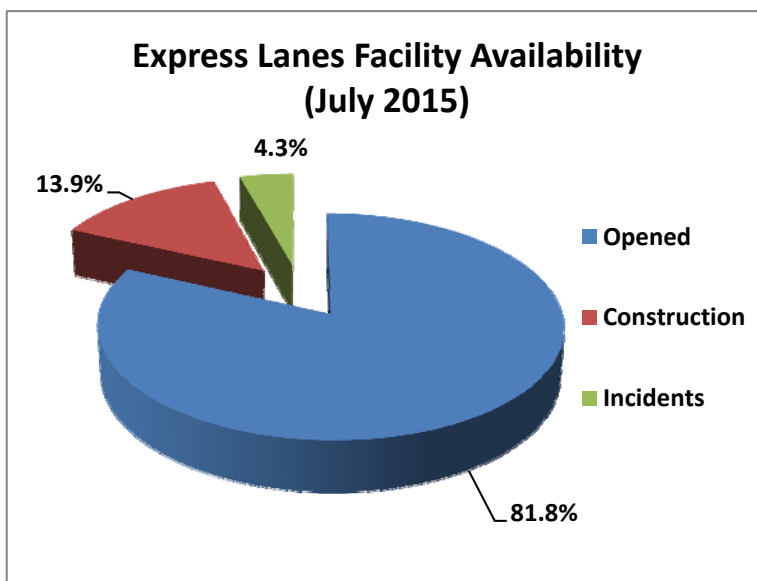
NOTE: ITD = Inception to Date

Registrations—Toll Exempt Trips

The total registrations through July 2015 increased to 9,334. The 62,138 Toll Exempt Trips for this month are shown by classification below.



Facility Availability



The entire 95 Express lanes (both directions) were open to motorists 81.8% of the time, while closed 13.9% due to 35 planned construction/ maintenance events (each lasting approximately 5 hours, 55 minutes in duration, on average) and 4.3% due to 231 non-recurring events (each lasting approximately 16.5 minutes in duration, on average).