

95 Express Monthly Operations Report – October 2015

General

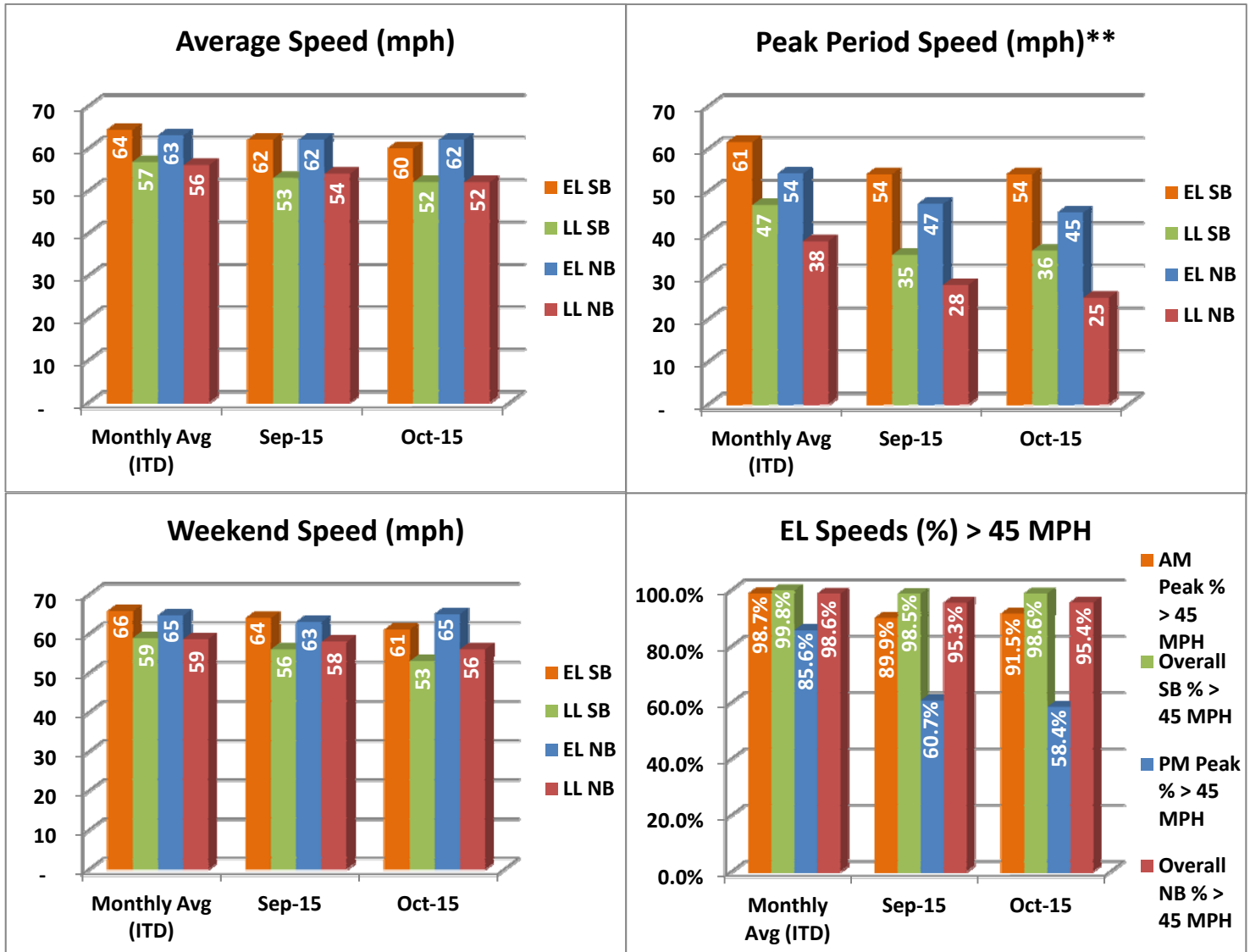
In total, the 95 Express Lanes:

- ✓ Serviced 1,826,694 vehicle trips in October 2015 (18.1 million trips in 2015), bringing the total since opening (December 5, 2008) to approximately 127.2 million trips.
- ✓ Had estimated monthly toll revenue of \$2.86 million in October 2015 (\$24.8 million in 2015), bringing the total revenue to date to approximately \$118.8 million.
- ✓ Increased to a total of 9,348 registered vehicles, resulting in 54,894 toll exempt trips.

<u>October 2015 Statistics</u>	<u>Southbound</u>			<u>Northbound</u>		
Total Trips	921,918			904,776		
Exempt Trips	26,586			28,308		
Revenue						
	\$1,150,823			\$1,710,568		
Tolls						
- Range	\$0.00 - \$10.50			\$0.00 - \$10.50		
- Avg. Weekday	\$1.64			\$2.68		
- Avg. Peak Period**	\$2.56			\$6.91		
- Avg. Weekend	\$0.61			\$0.53		
- Avg. Off Peak	\$1.39			\$1.55		
- 85 th Percentile	\$3.00			\$6.75		
Volume (veh)						
	EL	LL		EL	LL	
- Avg. Weekday	33,470	100,412		32,098	95,336	
- Avg. Peak Period**	8,886	16,437		7,533	15,902	
Speed (mph)						
	EL	LL	Δ	EL	LL	Δ
- Avg. Overall	60	52	8	62	52	10
- Avg. Peak Period**	54	36	18	45	25	20
Operated Above 45 MPH						
	98.6%			95.4%		
Remained Open to Motorists						
	71.0%			82.0%		
Closed due to Planned Construction						
	24.5%			13.1%		
Closed due to Non-recurring Events						
	4.4%			4.8%		
<i>EL (Express Lanes); LL (Local Lanes); **Peak Period is defined as 6-9 AM (southbound) and 4-7 PM (northbound).</i>						

Operations/Traffic Statistics - Speed Data

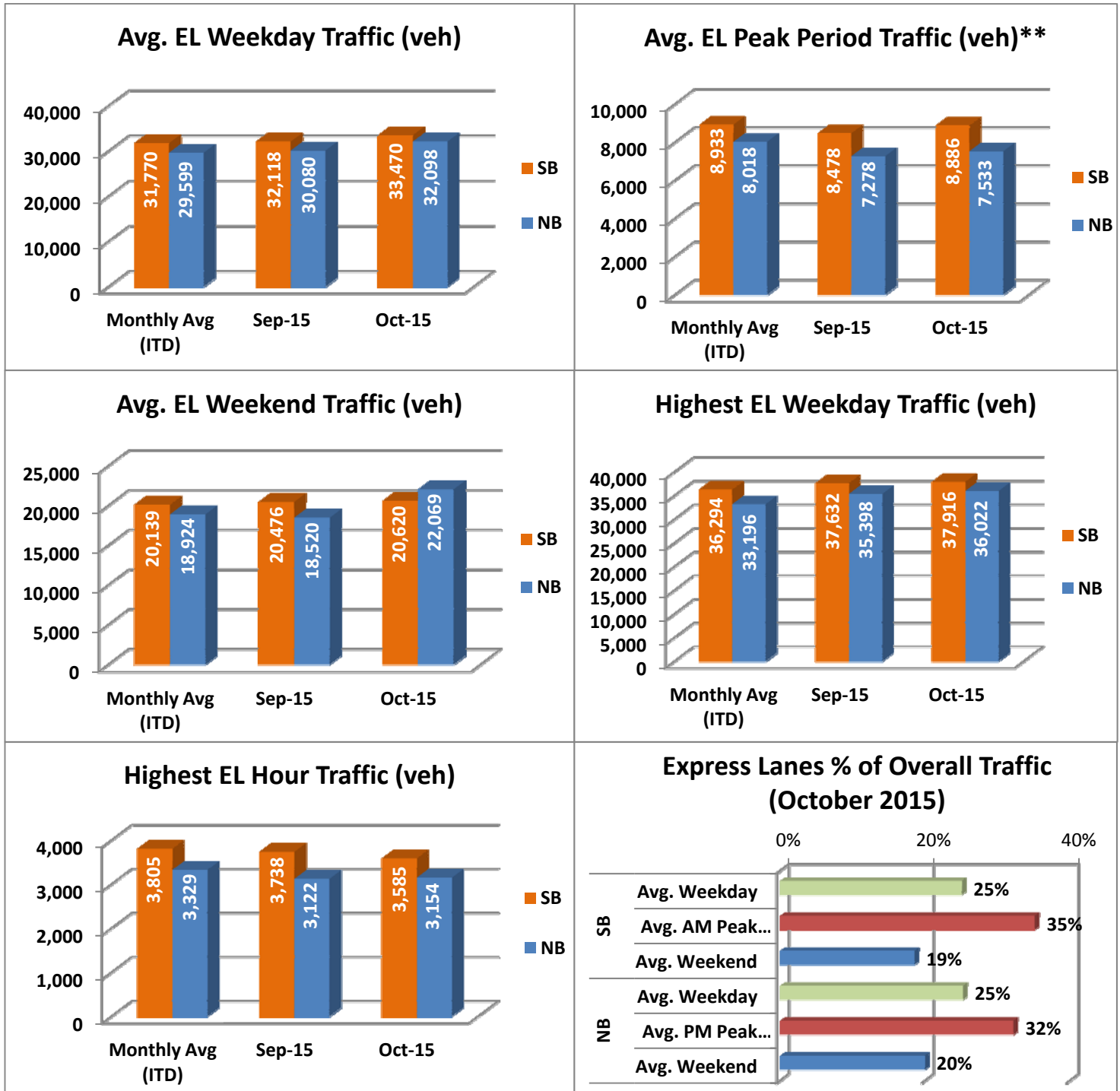
** Peak Period is defined as 6-9 AM (southbound) and 4-7 PM (northbound).



NOTE: ITD = Inception to Date; EL = Express Lanes; LL = Local Lanes

Operations/Traffic Statistics - Volume Data

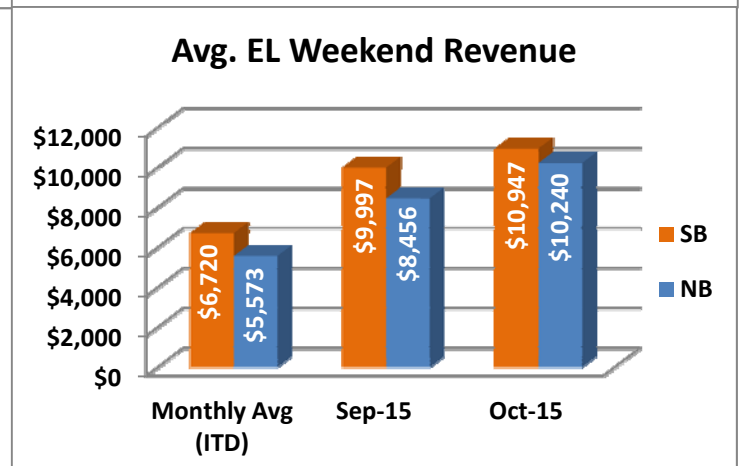
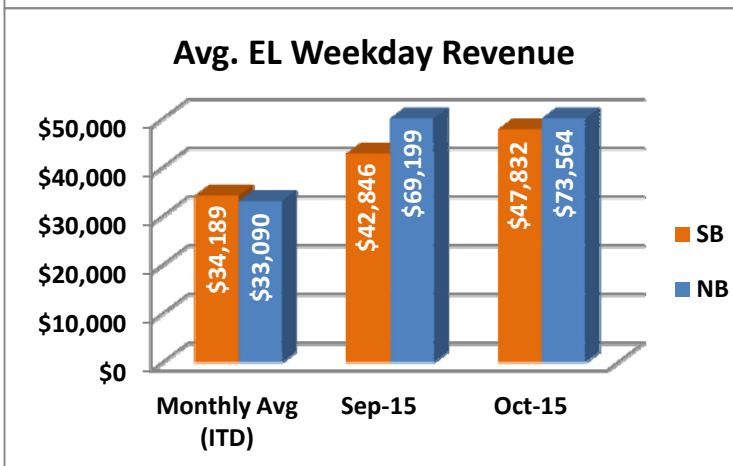
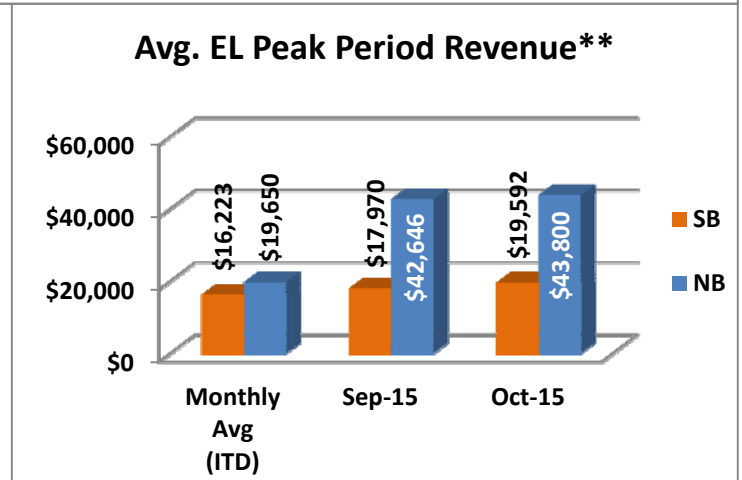
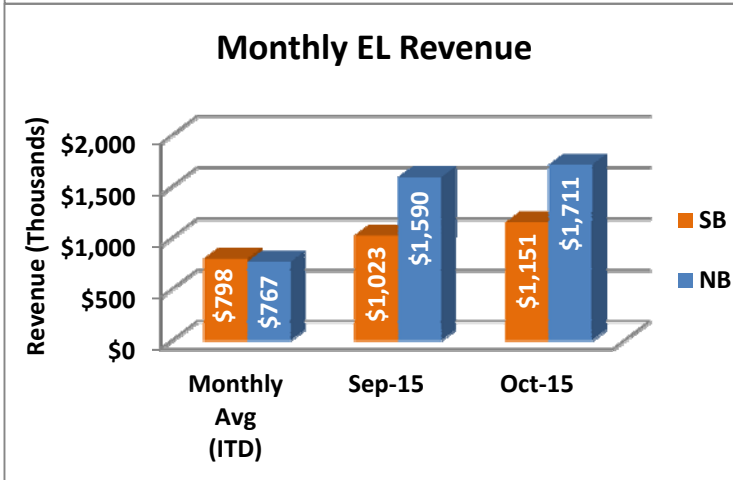
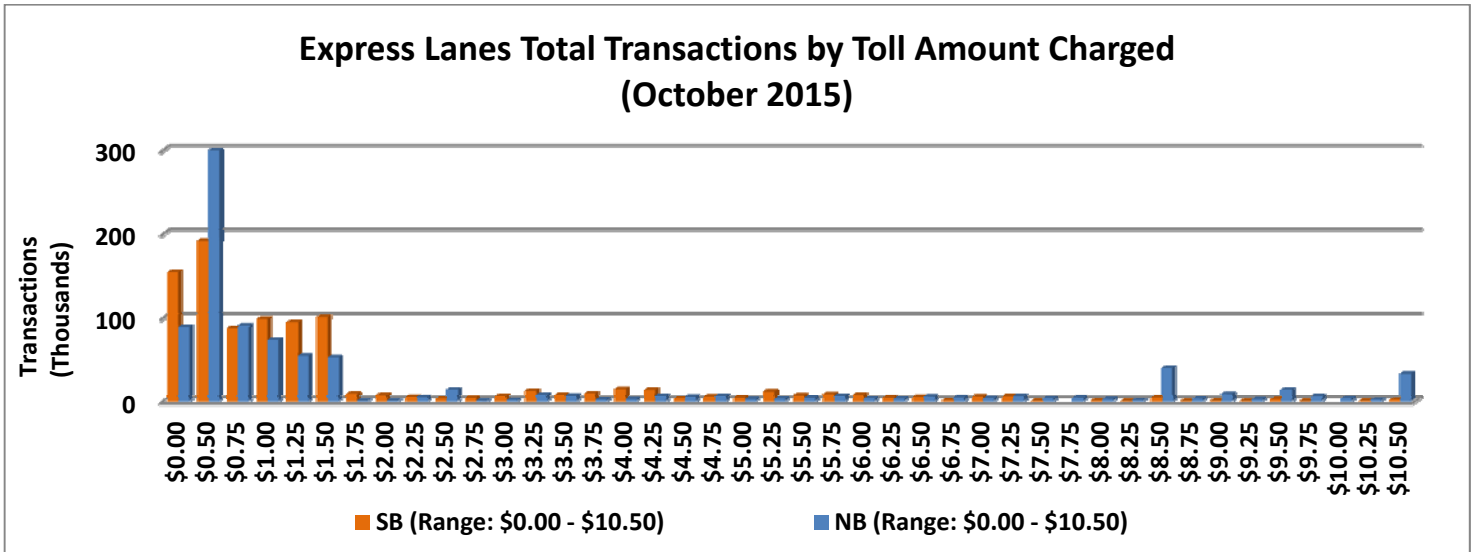
** Peak Period is defined as 6-9 AM (southbound) and 4-7 PM (northbound).



NOTE: ITD = Inception to Date

Revenue/Tolls Statistics

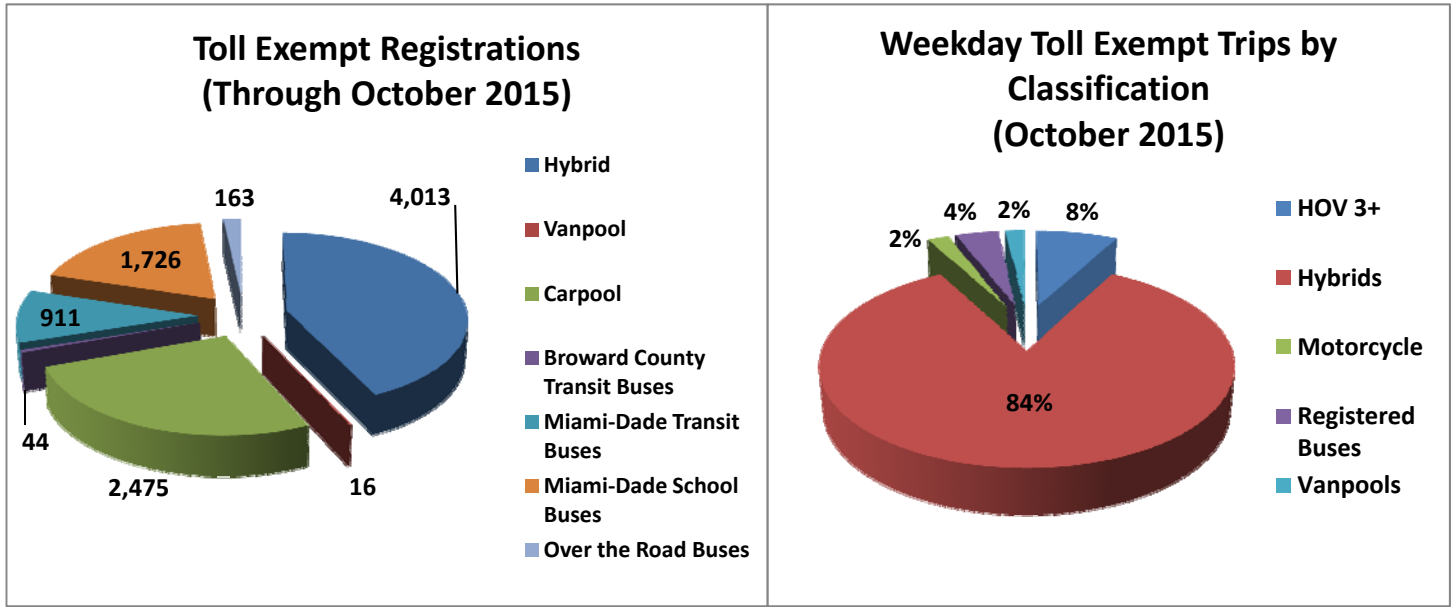
** Peak Period is defined as 6-9 AM (southbound) and 4-7 PM (northbound).



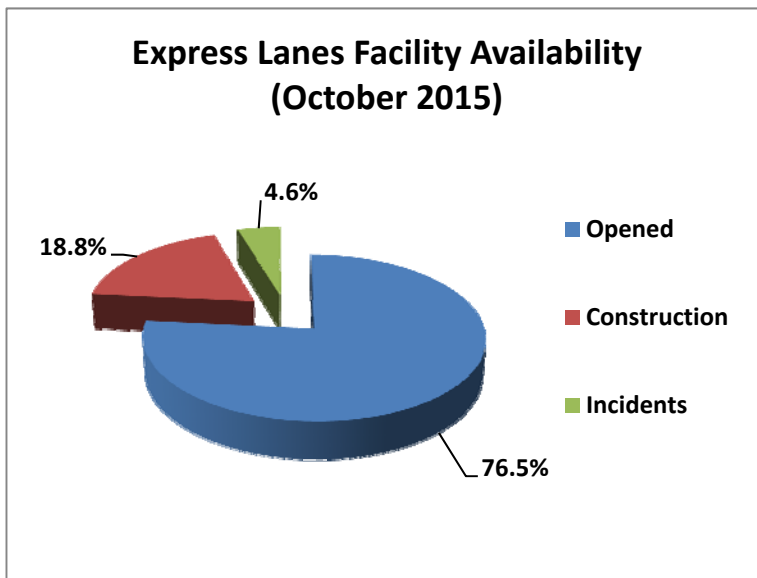
NOTE: ITD = Inception to Date

Registrations—Toll Exempt Trips

The total registrations through October 2015 increased to 9,348. The Weekday Toll Exempt Trips for this month are shown by classification below.



Facility Availability



The entire 95 Express lanes (both directions) were open to motorists 76.5% of the time, while closed 18.8% due to 36 planned construction/ maintenance events (each lasting approximately 7 hours, 47 minutes in duration, on average) and 4.6% due to 221 non-recurring events (each lasting approximately 18.8 minutes in duration, on average).