

95 Express Monthly Operations Report – December 2015

General

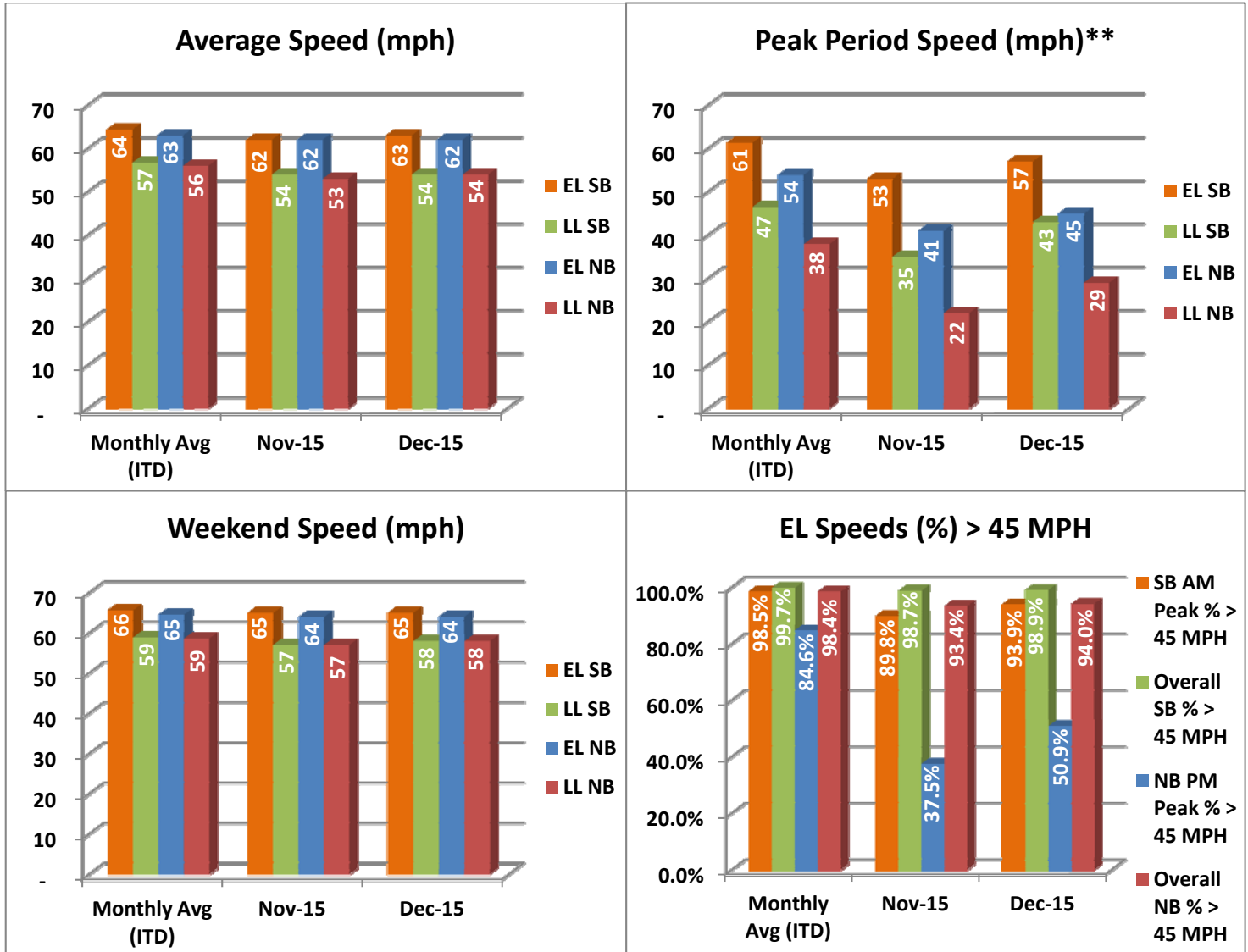
In total, the 95 Express Lanes:

- ✓ Serviced 1,894,621 vehicle trips in December 2015 (21.8 million trips in 2015), bringing the total since opening (December 5, 2008) to approximately 130.9 million trips.
- ✓ Had estimated monthly toll revenue of \$2.85 million in December 2015 (\$30.4 million in 2015), bringing the total revenue to date to approximately \$124.5 million.
- ✓ Increased to a total of 9,398 registered vehicles, resulting in 56,724 toll exempt trips.

<u>December 2015 Statistics</u>	<u>Southbound</u>			<u>Northbound</u>		
Total Trips	986,658			907,963		
Exempt Trips	28,086			28,638		
Revenue						
	\$1,009,623			\$1,839,896		
Tolls						
- Range	\$0.00 - \$9.50			\$0.00 - \$10.50		
- Avg. Weekday	\$1.30			\$2.80		
- Avg. Peak Period**	\$1.91			\$7.08		
- Avg. Weekend	\$0.78			\$0.68		
- Avg. Off Peak	\$1.14			\$1.72		
- 85 th Percentile	\$1.25			\$6.75		
Volume (veh)						
	EL	LL		EL	LL	
- Avg. Weekday	34,016	101,913		31,365	99,427	
- Avg. Peak Period**	7,934	16,599		7,104	15,899	
Speed (mph)						
	EL	LL	Δ	EL	LL	Δ
- Avg. Overall	63	54	9	62	54	8
- Avg. Peak Period**	57	43	14	45	29	16
Operated Above 45 MPH						
	98.9%			94.0%		
Remained Open to Motorists						
	80.4%			82.7%		
Closed due to Planned Construction						
	17.1%			14.7%		
Closed due to Non-recurring Events						
	2.5%			2.6%		
<i>EL (Express Lanes); LL (Local Lanes); **Peak Period is defined as 6-9 AM (southbound) and 4-7 PM (northbound).</i>						

Operations/Traffic Statistics - Speed Data

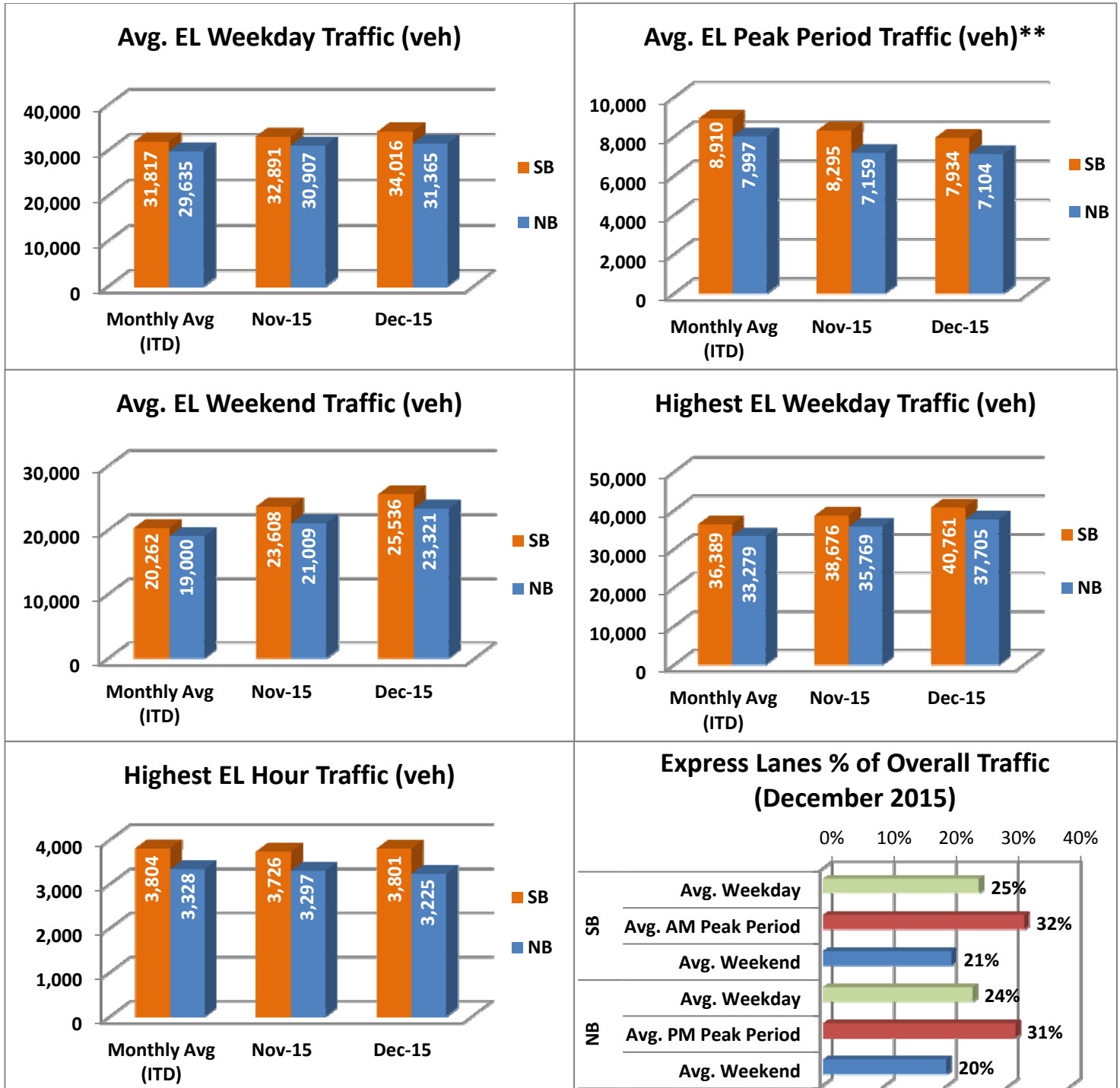
** Peak Period is defined as 6-9 AM (southbound) and 4-7 PM (northbound).



NOTE: ITD = Inception to Date; EL = Express Lanes; LL = Local Lanes

Operations/Traffic Statistics - Volume Data

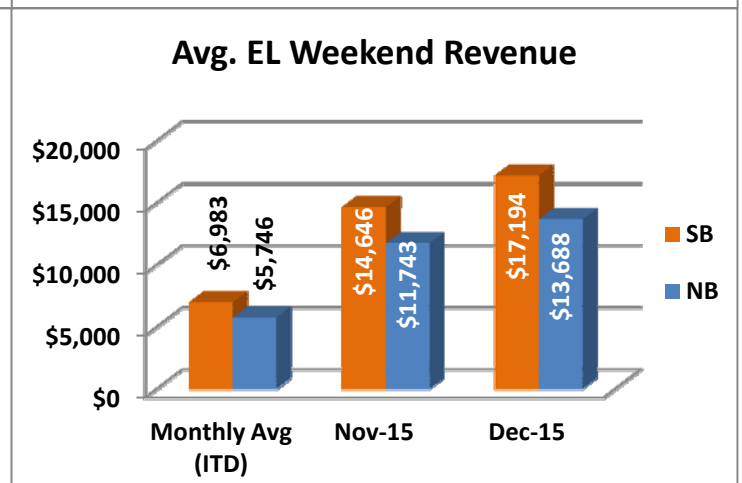
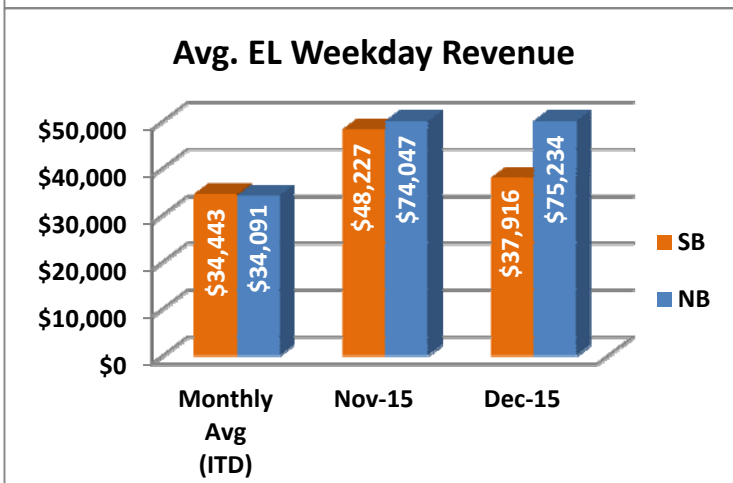
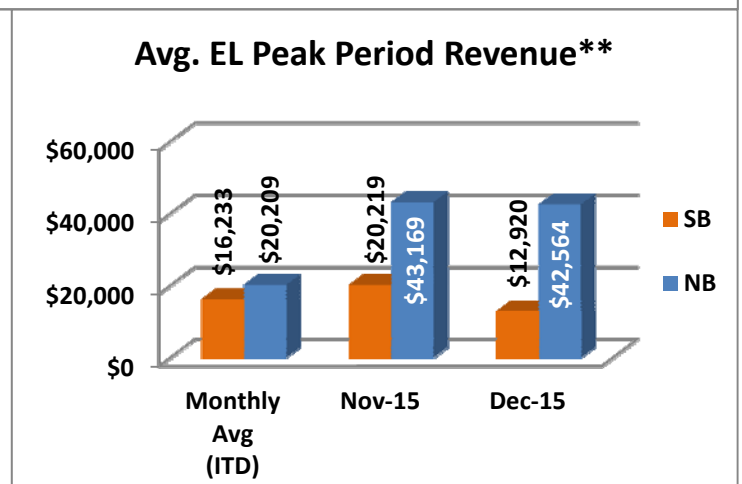
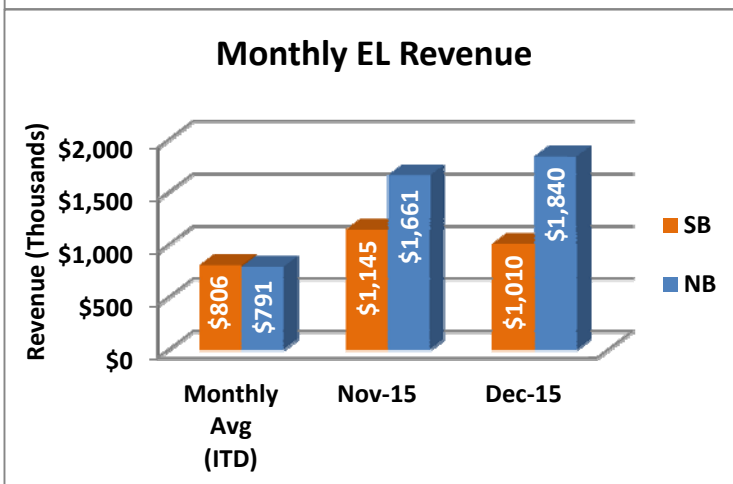
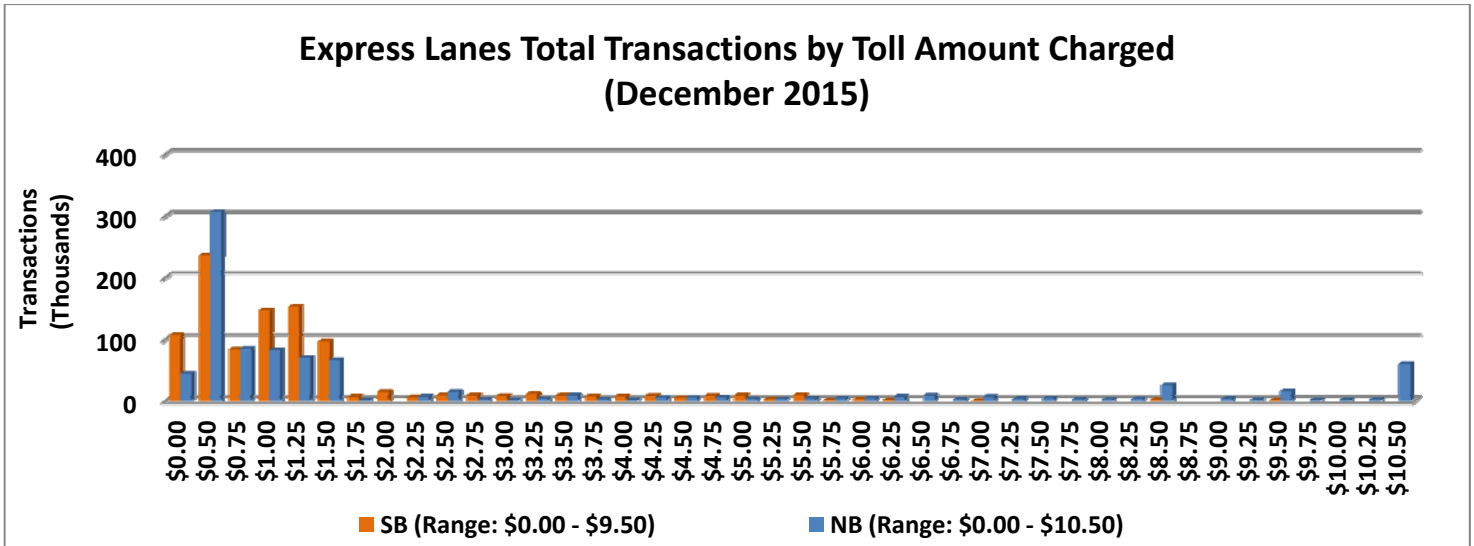
** Peak Period is defined as 6-9 AM (southbound) and 4-7 PM (northbound).



NOTE: ITD = Inception to Date

Revenue/Tolls Statistics

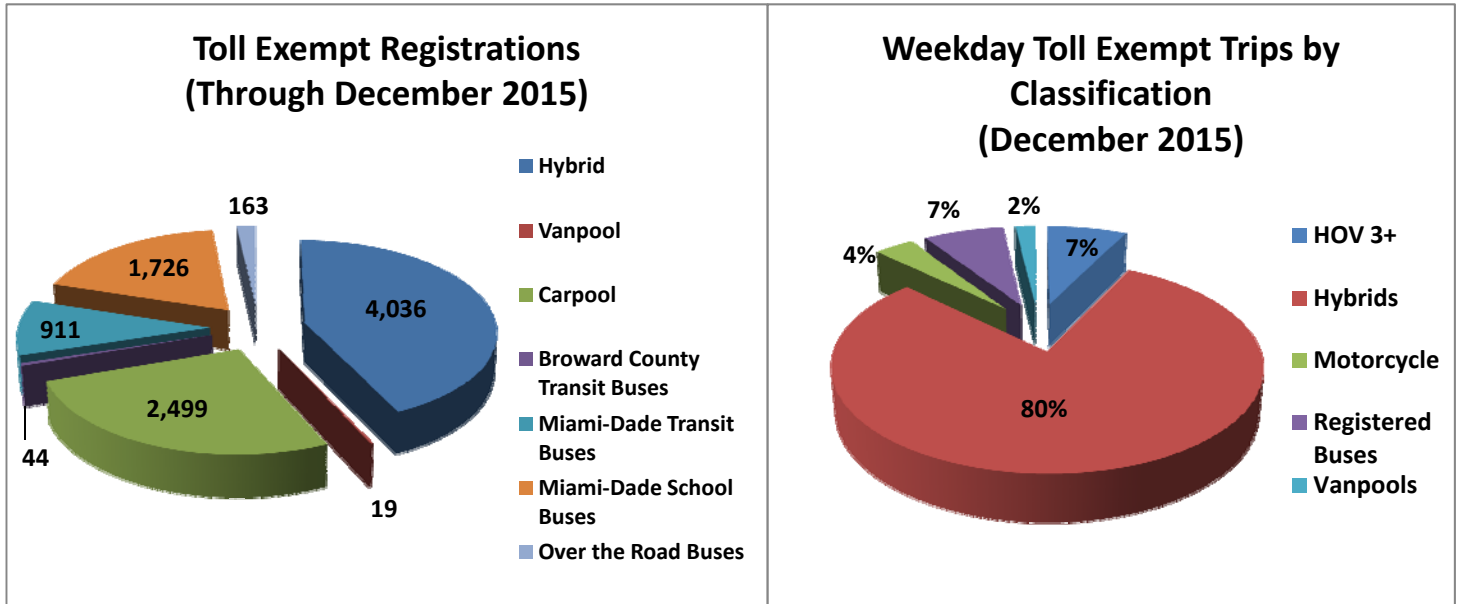
** Peak Period is defined as 6-9 AM (southbound) and 4-7 PM (northbound).



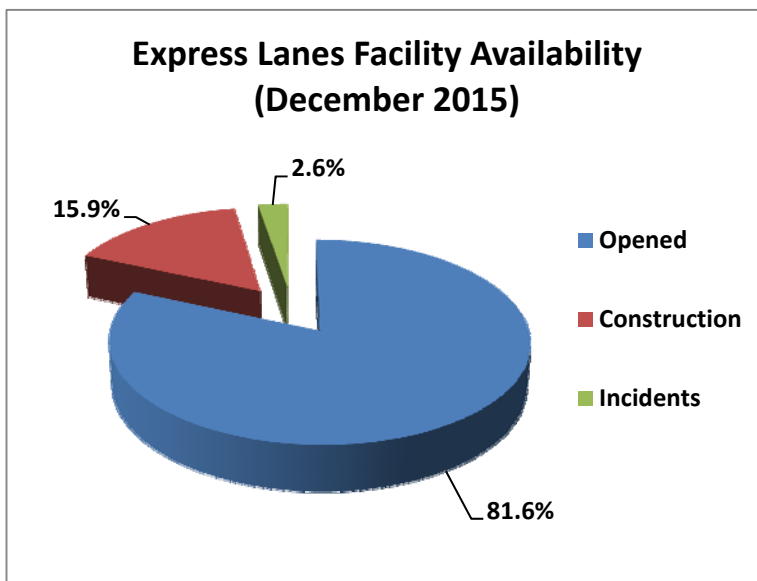
NOTE: ITD = Inception to Date

Registrations—Toll Exempt Trips

The total registrations through December 2015 increased to 9,398. The Weekday Toll Exempt Trips for this month are shown by classification below.



Facility Availability



The entire 95 Express lanes (both directions) were open to motorists 81.6% of the time, while closed 15.9% due to 39 planned construction/ maintenance events (each lasting approximately 6 hours, 4 minutes in duration, on average) and 2.6% due to 94 non-recurring events (each lasting approximately 24 minutes in duration, on average).