

95 Express Monthly Operations Report – April 2016

General

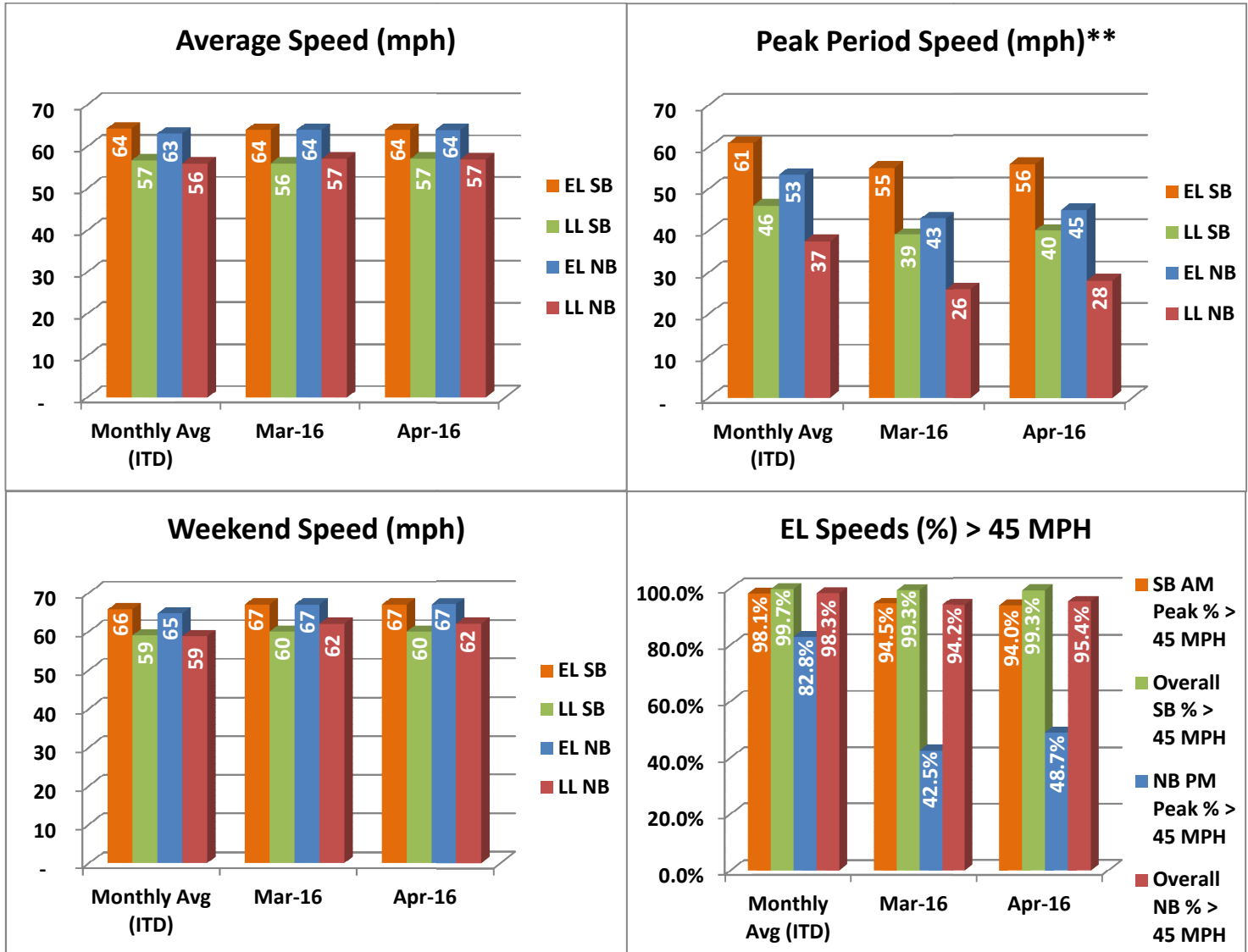
In total, the 95 Express Lanes:

- ✓ Serviced 1,894,346 vehicle trips in April 2016 (approximately 7.62 million trips in 2016 to date), bringing the total since opening (December 5, 2008) to approximately 138.5 million trips.
- ✓ Had estimated monthly toll revenue of \$3.08 million in April 2016 (approximately \$12.0 million in 2016 to date), bringing the total revenue since opening to date to approximately \$136.5 million.
- ✓ Increased to a total of 9,408 registered vehicles, resulting in 72,117 toll exempt trips.

April 2016 Statistics	Southbound		Northbound			
Total Trips	980,590		913,756			
Exempt Trips	37,389		34,728			
Revenue						
	\$1,399,348		\$1,681,987			
Tolls						
- Range	\$0.00 - \$10.50		\$0.00 - \$10.50			
- Avg. Weekday	\$1.93		\$2.67			
- Avg. Peak Period**	\$3.32		\$7.39			
- Avg. Weekend	\$0.76		\$0.60			
- Avg. Off Peak	\$1.45		\$1.48			
- 85 th Percentile	\$3.75		\$6.00			
Volume (veh)						
	EL	LL	EL	LL		
- Avg. Weekday	35,551	104,831	32,746	104,334		
- Avg. Peak Period**	9,648	16,742	7,128	16,114		
Speed (mph)						
	EL	LL	Δ	EL	LL	Δ
- Avg. Overall	64	57	7	64	57	7
- Avg. Peak Period**	56	40	16	45	28	17
Operated Above 45 MPH						
	99.3%		95.4%			
Remained Open to Motorists						
	93.0%		91.0%			
Closed due to Planned Construction						
	3.7%		5.4%			
Closed due to Non-recurring Events						
	3.3%		3.6%			
<i>EL (Express Lanes); LL (Local Lanes); **Peak Period is defined as 6-9 AM (southbound) and 4-7 PM (northbound).</i>						

Operations/Traffic Statistics - Speed Data

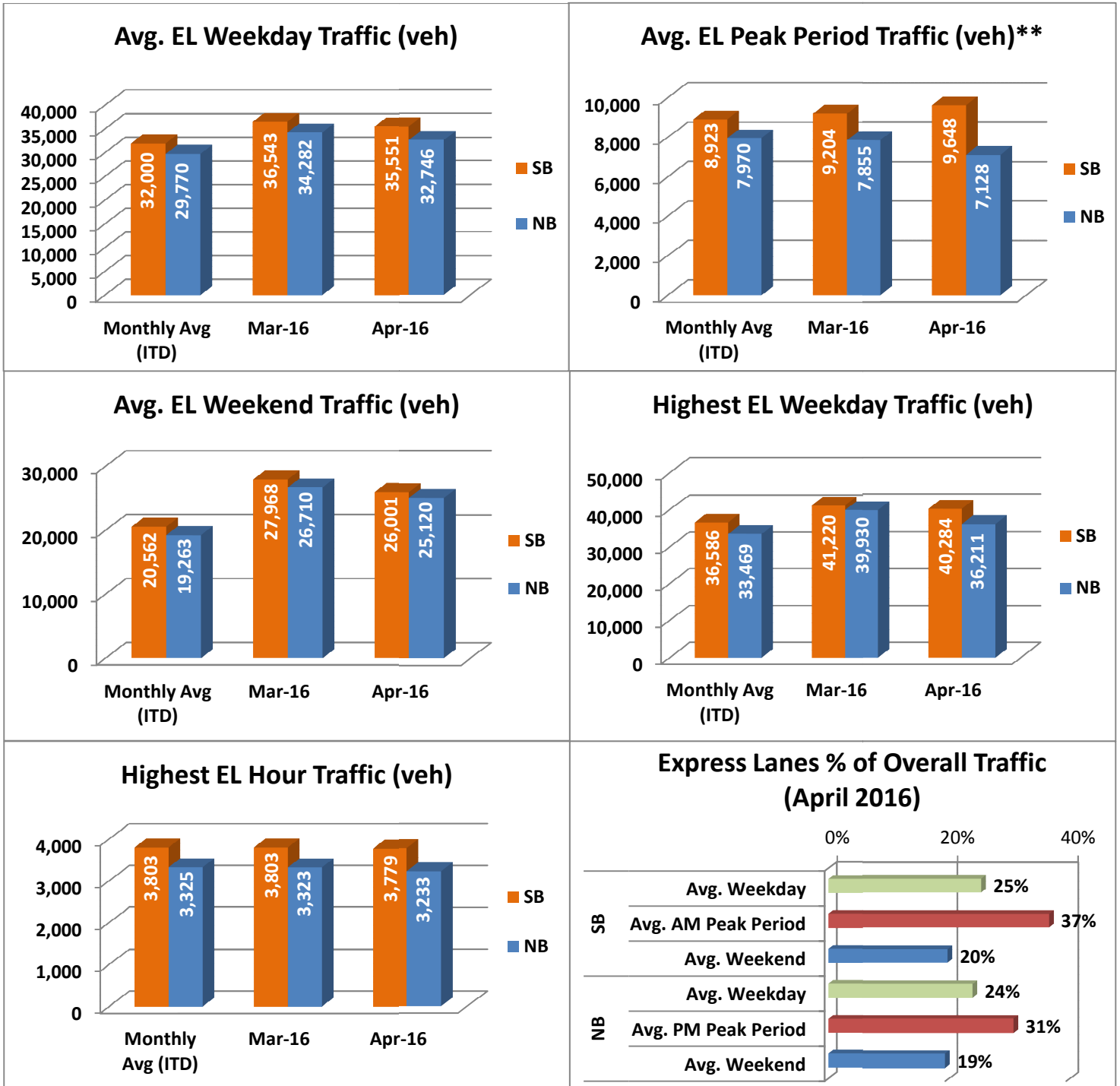
** Peak Period is defined as 6-9 AM (southbound) and 4-7 PM (northbound).



NOTE: ITD = Inception to Date; EL = Express Lanes; LL = Local Lanes

Operations/Traffic Statistics - Volume Data

** Peak Period is defined as 6-9 AM (southbound) and 4-7 PM (northbound).

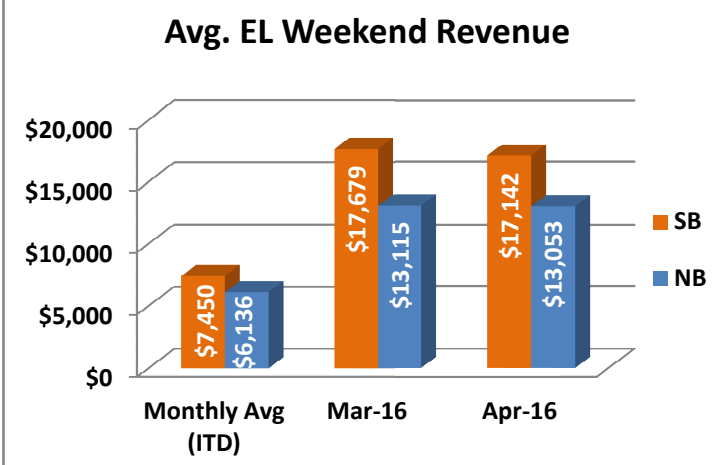
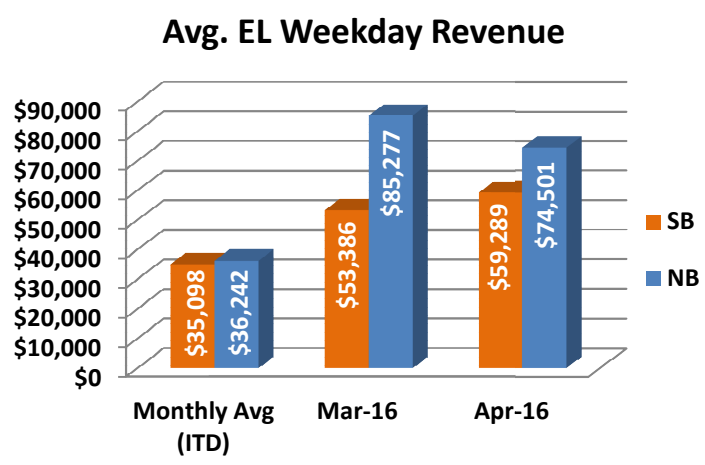
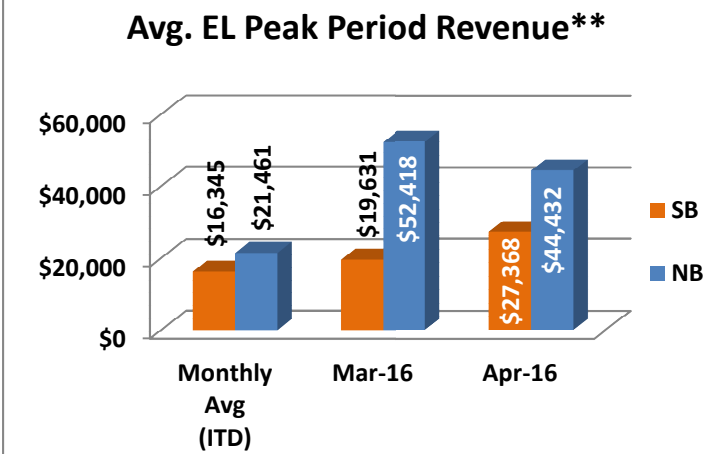
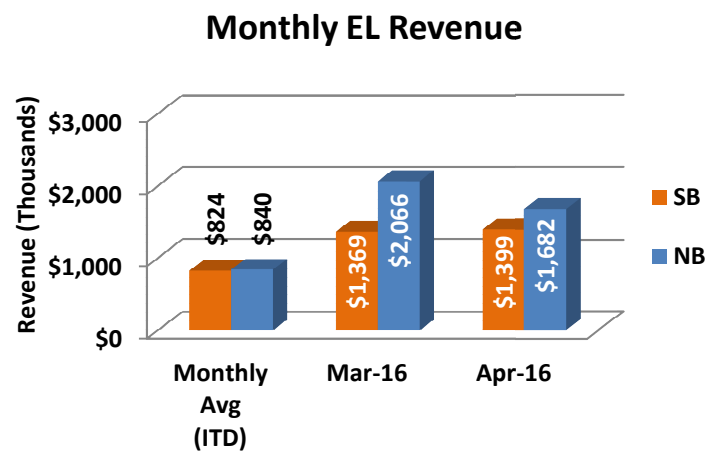
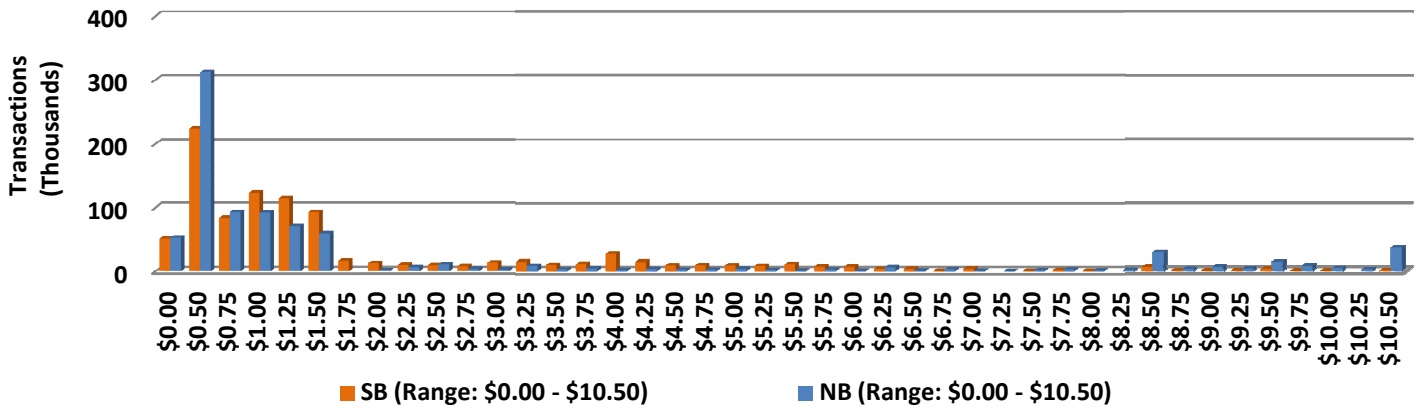


NOTE: ITD = Inception to Date

Revenue/Tolls Statistics

** Peak Period is defined as 6-9 AM (southbound) and 4-7 PM (northbound).

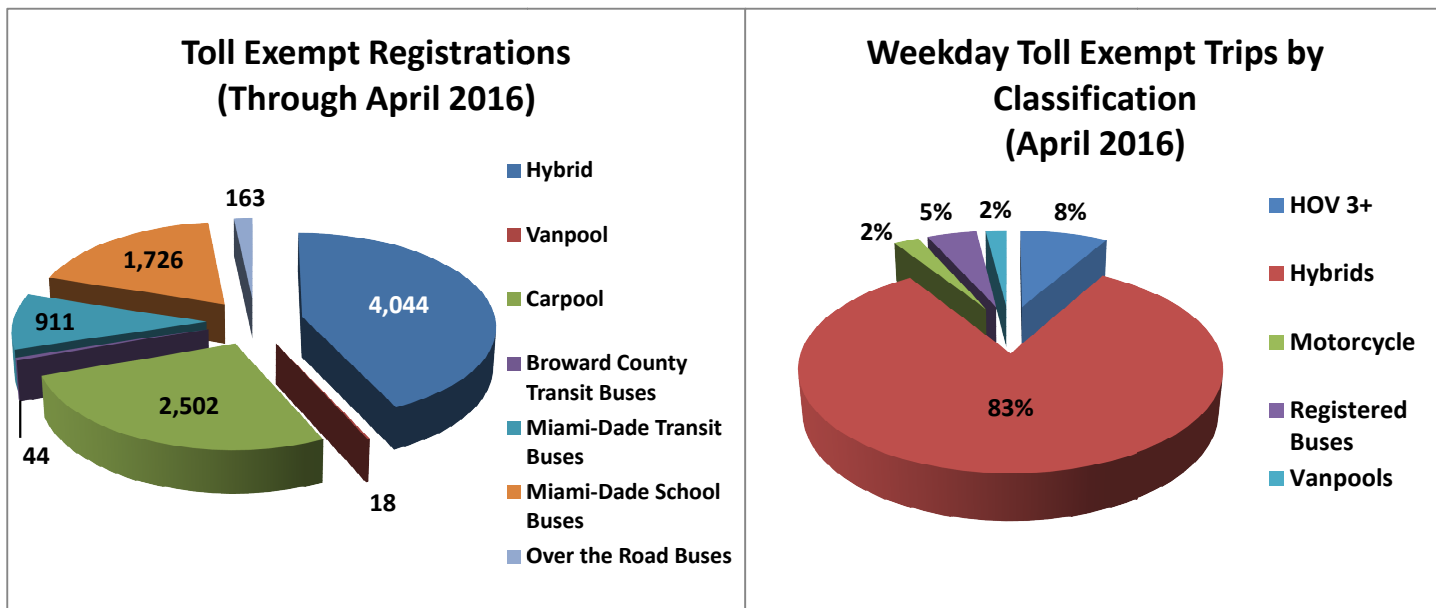
Express Lanes Total Transactions by Toll Amount Charged (April 2016)



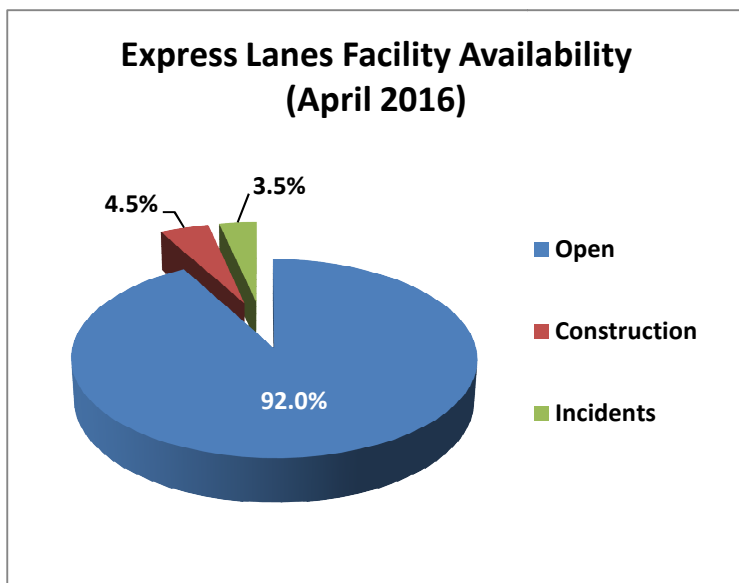
NOTE: ITD = Inception to Date

Registrations—Toll Exempt Trips

The total registrations through April 2016 increased to 9,408. The Weekday Toll Exempt Trips for this month are shown by classification below.



Facility Availability



The entire 95 Express lanes (both directions) were open to motorists 92.0% of the time, while closed 4.5% due to 14 planned construction/ maintenance events (each lasting approximately 4 hours, 41 minutes in duration, on average) and 3.5% due to 92 non-recurring events (each lasting approximately 33 minutes in duration, on average).