

95 Express Monthly Operations Report – August 2014

General

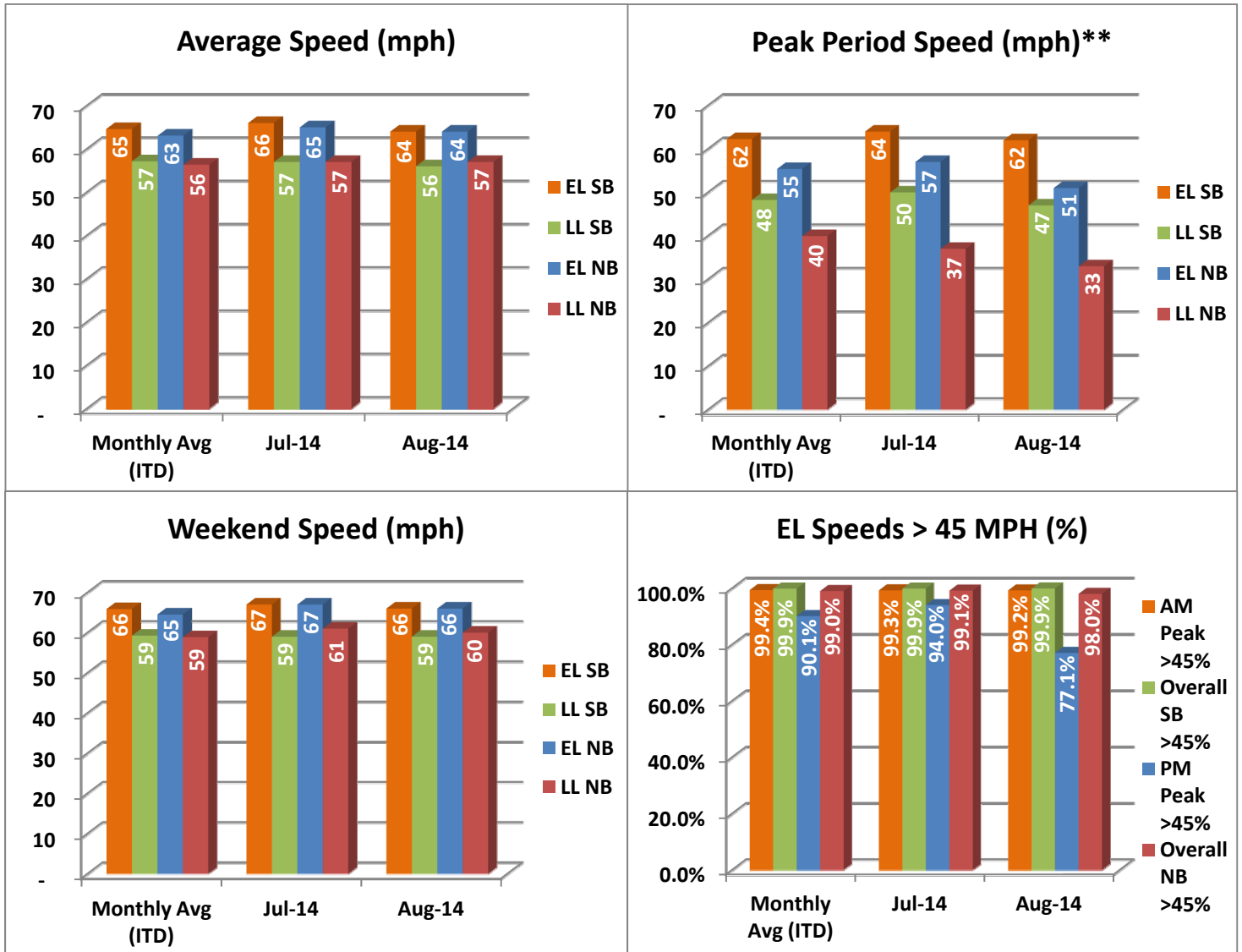
In total, the 95 Express Lanes:

- ✓ Serviced 1,659,289 vehicle trips in August 2014 (14.3M trips in 2014 to date), bringing the total since opening (August 5, 2008) to approximately 102.6 million trips.
- ✓ Had estimated monthly toll revenue of \$1.73 million in August 2014 (\$15.0M in 2014 to date), bringing the total revenue to date to approximately \$86.2 million.
- ✓ Increased to a total of 9,135 registered vehicles, resulting in 52,343 toll exempt trips.

<u>August 2014 Statistics</u>	<u>Southbound</u>		<u>Northbound</u>			
Total Trips	823,260		836,029			
Exempt Trips	26,355		25,988			
Revenue						
	\$819,835		\$913,607			
Tolls						
- Range***	\$0.00 - \$10.50		\$0.00 - \$10.50			
- Avg. Weekday	\$1.33		\$1.47			
- Avg. Peak Period**	\$2.00		\$3.10			
- Avg. Weekend	\$0.47		\$0.46			
- Avg. Off Peak	\$1.12		\$0.92			
- 85 th Percentile Weekday	\$2.25		\$2.25			
Volume (veh)						
	EL	LL	EL	LL		
- Avg. Weekday	30,734	104,243	30,645	100,946		
- Avg. Peak Period**	8,800	18,137	8,130	17,424		
Speed (mph)						
	EL	LL	Δ	EL	LL	Δ
- Avg. Overall	64	56	8	64	57	7
- Avg. Peak Period**	62	47	15	51	33	18
Operated Above 45 MPH						
	99.9%		98.0%			
Remained Open to Motorists						
	72.8%		94.1%			
Closed due to Planned Construction						
	23.3%		2.4%			
Closed due to Non-recurring Events						
	3.9%		3.6%			
EL (Express Lanes); LL (Local Lanes)						
**Peak Period is defined as 6-9 AM (southbound) and 4-7 PM (northbound).						
***Maximum Toll Increase started in March 2014; from \$1.00 per mile, maximum, to \$1.50 per mile.						

Operations/Traffic Statistics - Speed Data

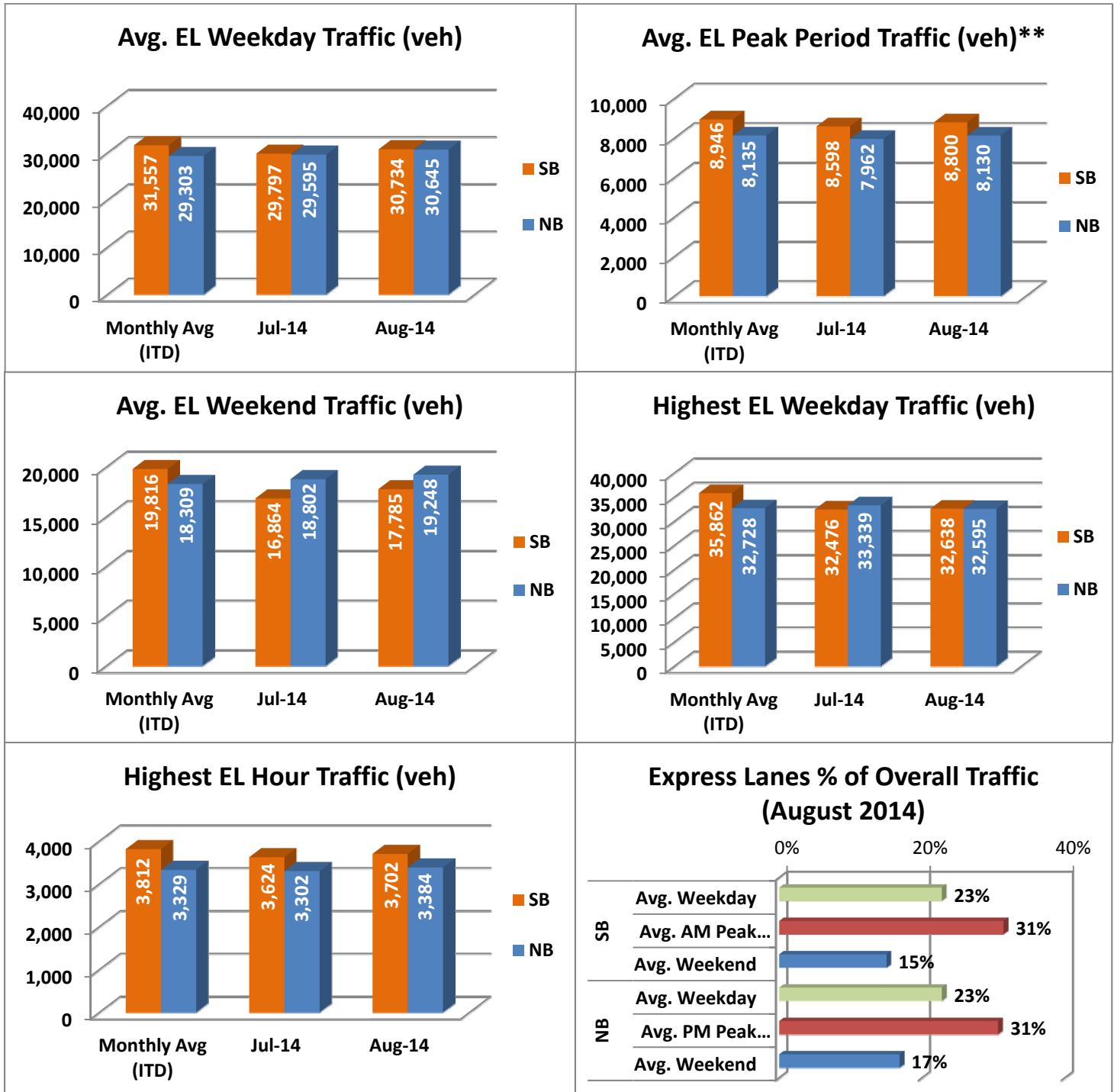
** Peak Period is defined as 6-9 AM (southbound) and 4-7 PM (northbound).



NOTE: ITD = Inception to Date

Operations/Traffic Statistics - Volume Data

** Peak Period is defined as 6-9 AM (southbound) and 4-7 PM (northbound).

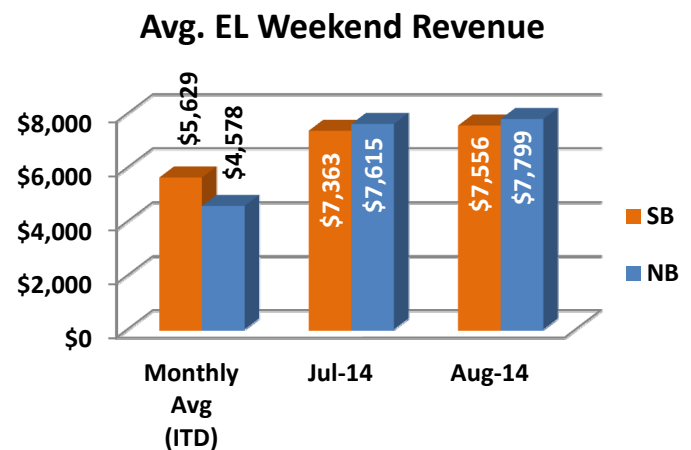
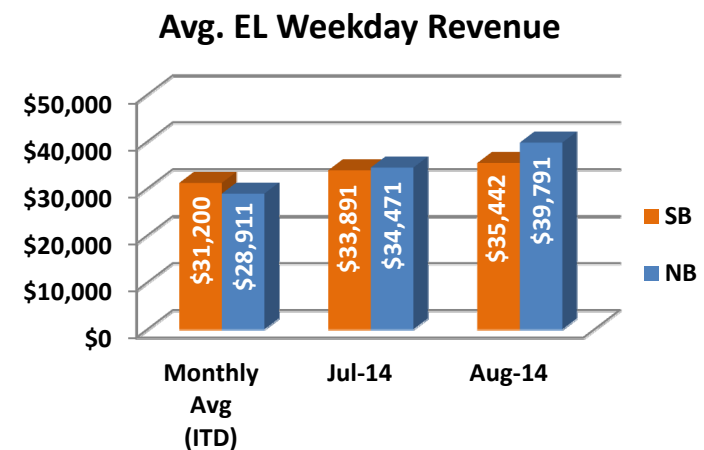
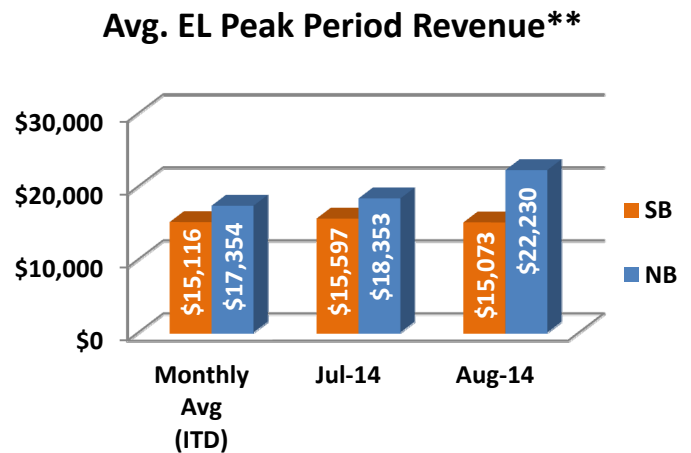
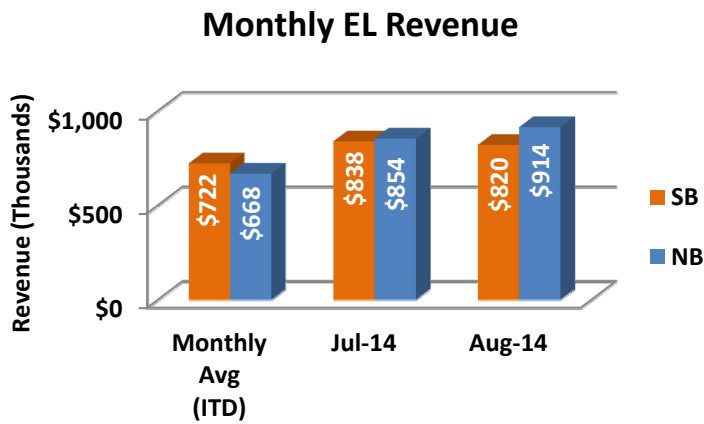
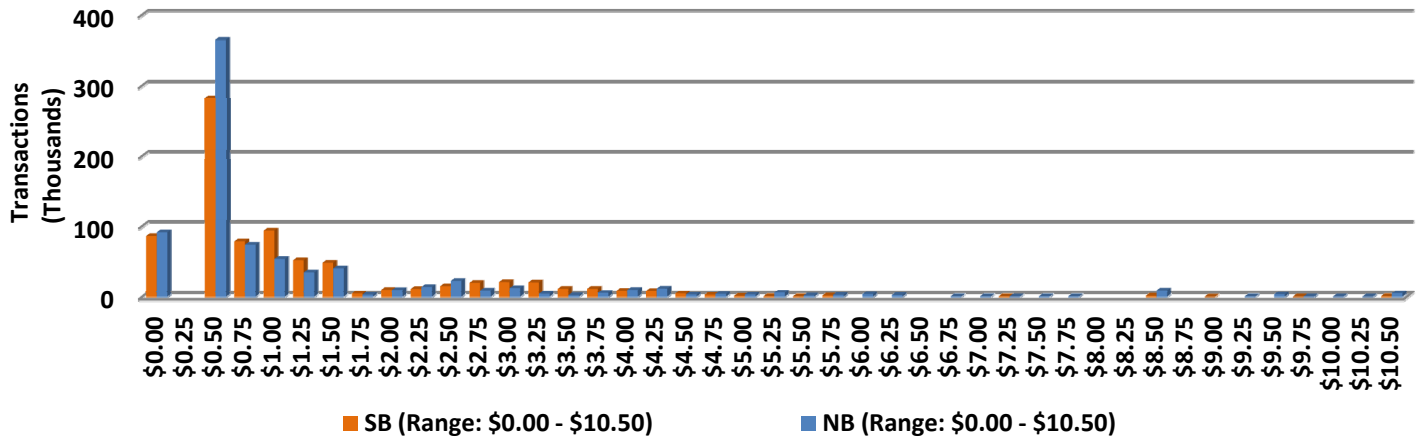


NOTE: ITD = Inception to Date

Revenue/Tolls Statistics

** Peak Period is defined as 6-9 AM (southbound) and 4-7 PM (northbound). Maximum toll increase started March 2014; from \$1.00 per mile, maximum, to \$1.50 per mile.

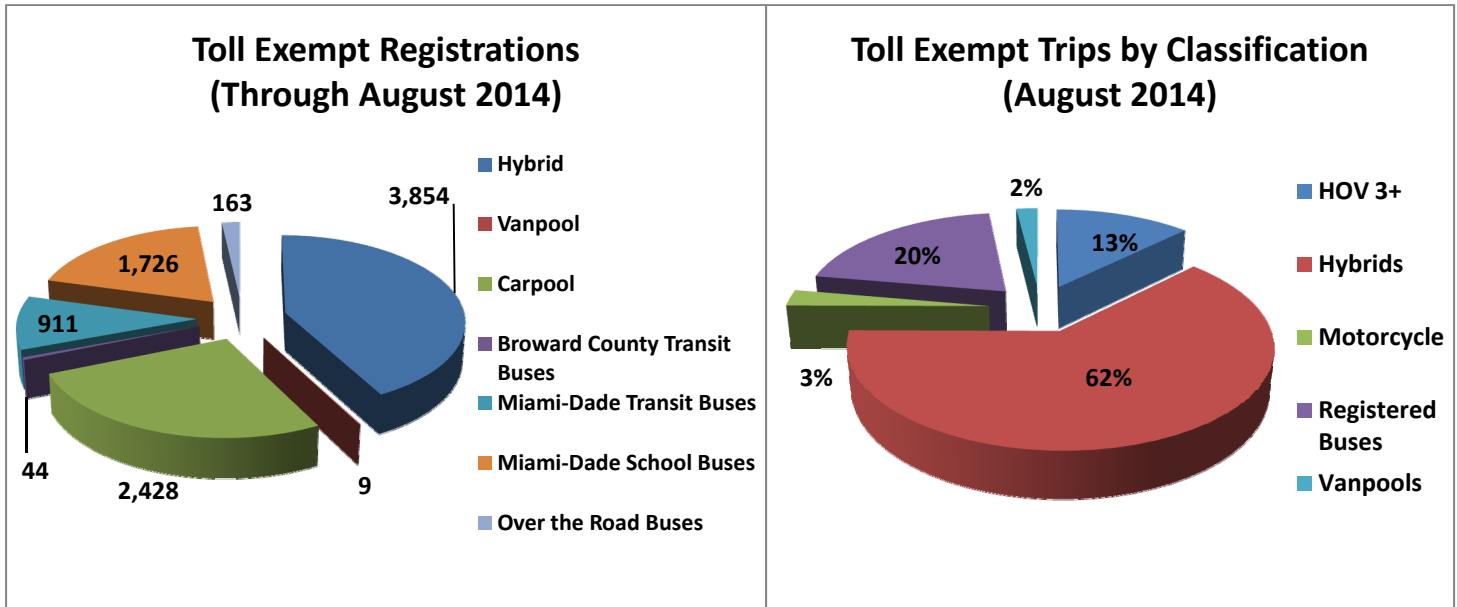
EL Weekday Total Transactions by Toll Amount Charged (August 2014)



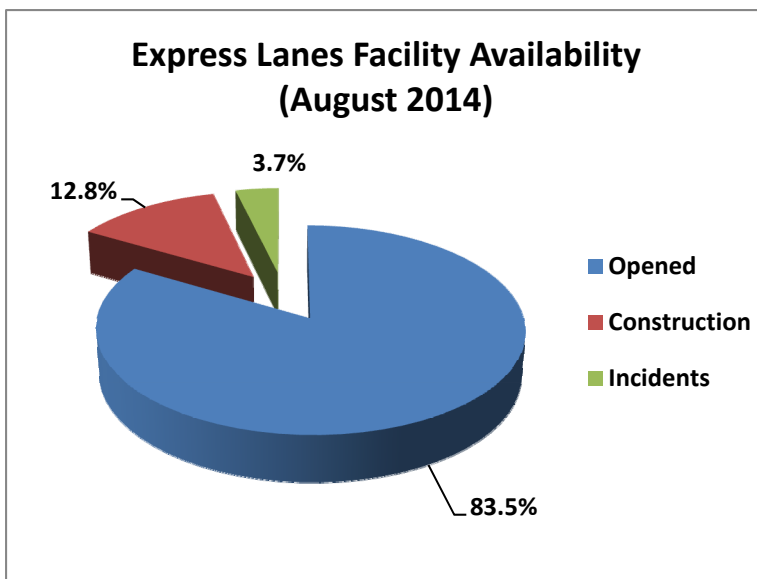
NOTE: ITD = Inception to Date

Registrations—Toll Exempt Trips

The total registrations through August 2014 increased to 9,135. The 52,343 Toll Exempt Trips for this month are shown by classification below.



Facility Availability



The entire 95 Express lanes (both directions) were open to motorists 83.5% of the time, while closed 12.8% due to 29 planned construction/ maintenance events (each lasting approximately 6 hours, 34 minutes in duration, on average) and 3.7% due to 183 non-recurring events (each lasting approximately 18.2 minutes in duration, on average).